

Supplementary Information

For

**Tetracyclic Indolines as A Novel Class of β -Lactam-Selective
Resistance-Modifying Agent for MRSA**

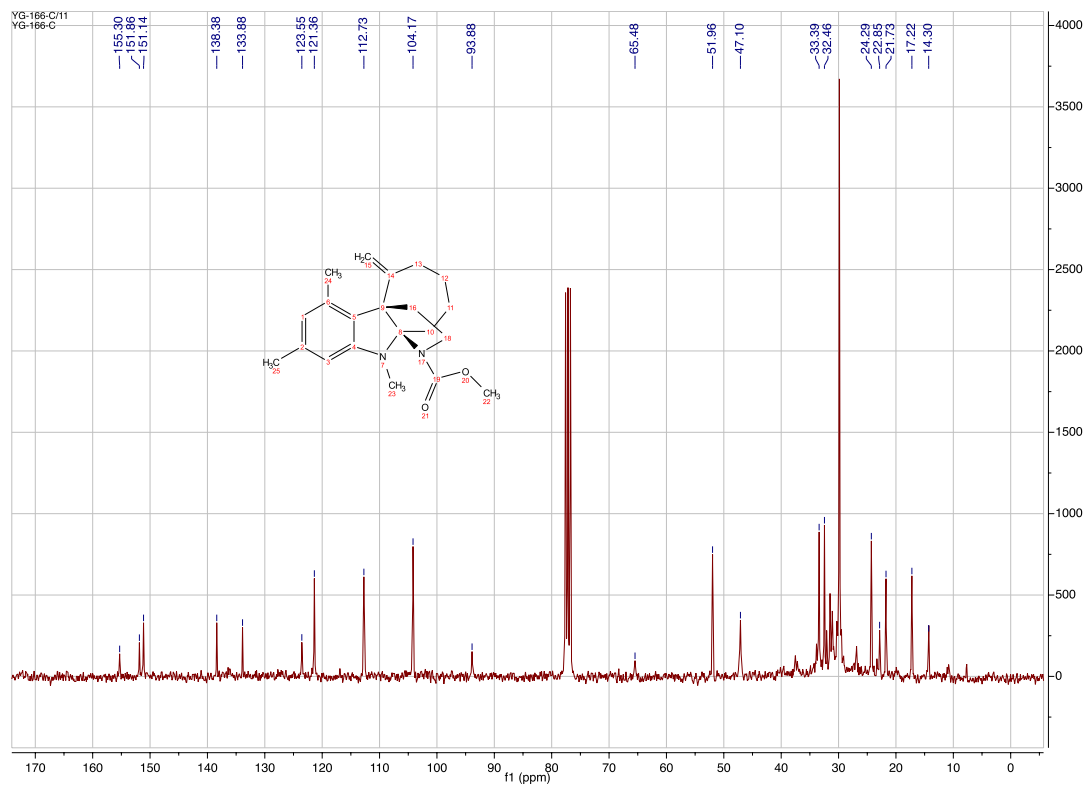
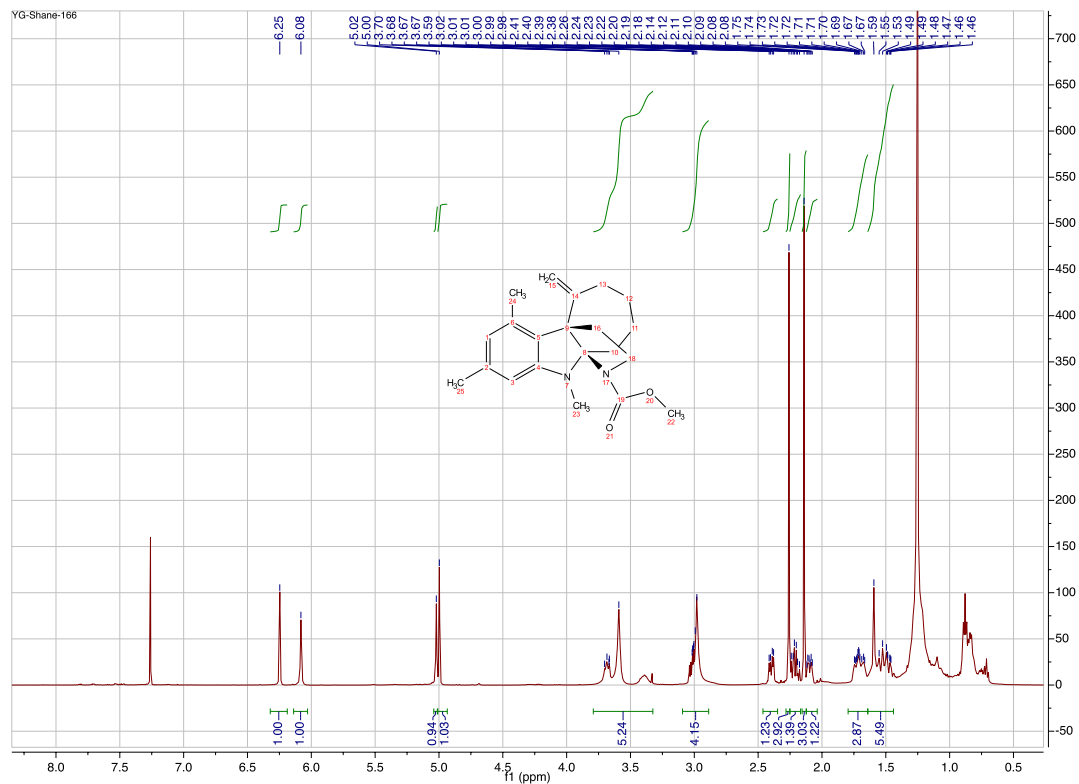
Yugen Zhu^{a,‡}, Lakota Cleaver^{a,‡}, Wei Wang^a, Jessica D. Podoll^a, Shane Walls^a, Austin Jolly^a, Xiang Wang^{a*}

^a Department of Chemistry and Biochemistry, University of Colorado, Boulder, CO
80309, USA

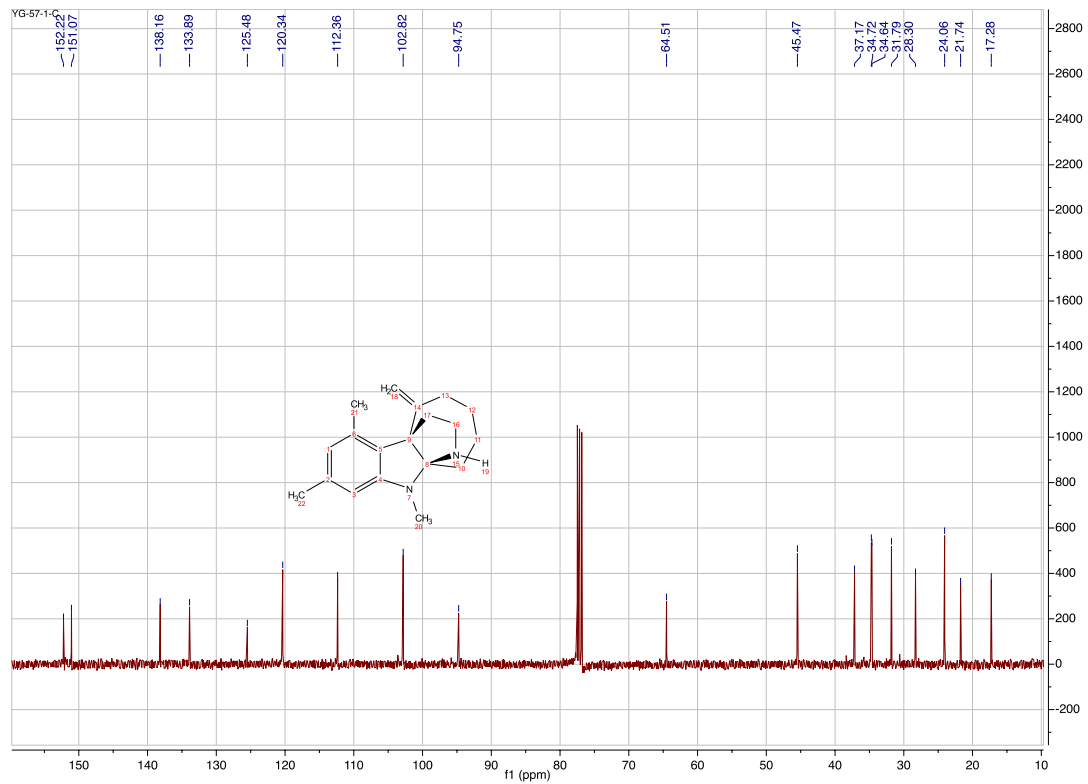
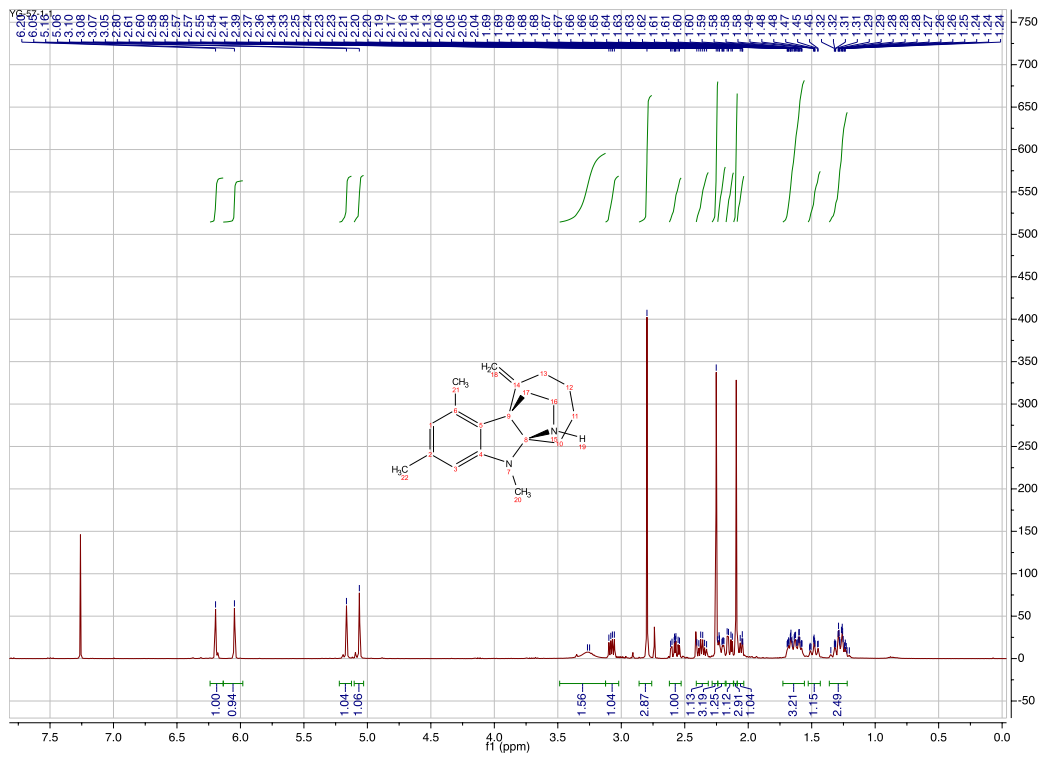
E-mail: xiang.wang@colorado.edu

NMR spectra of representative compounds:

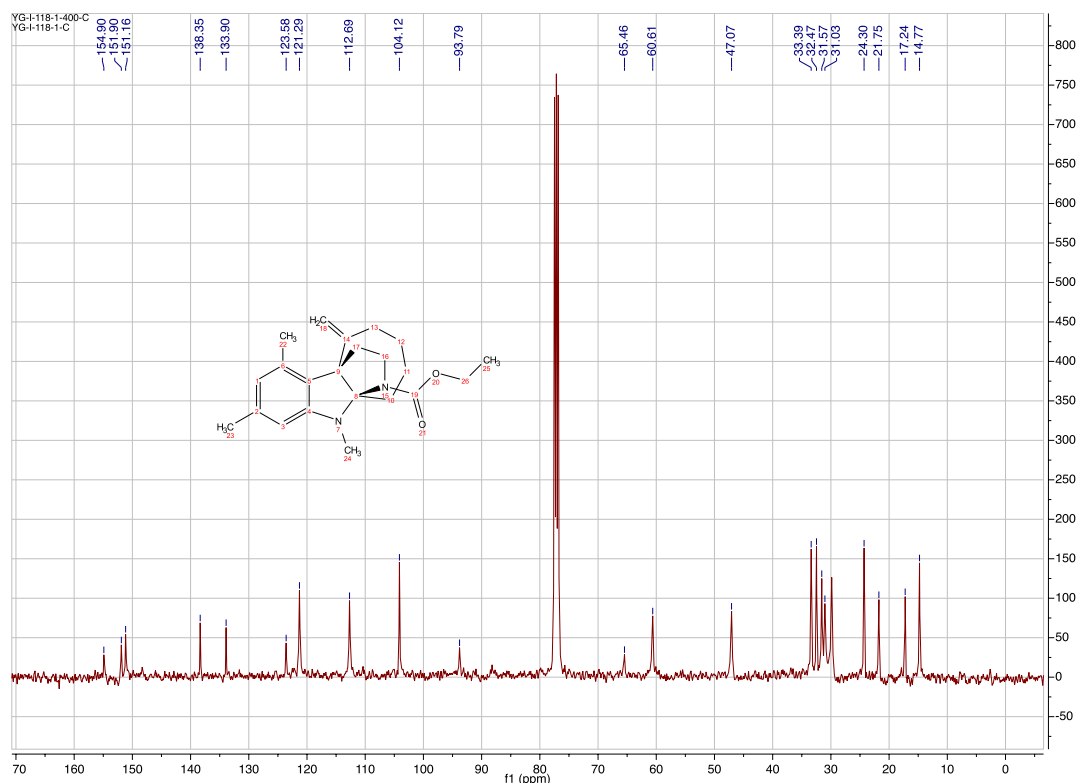
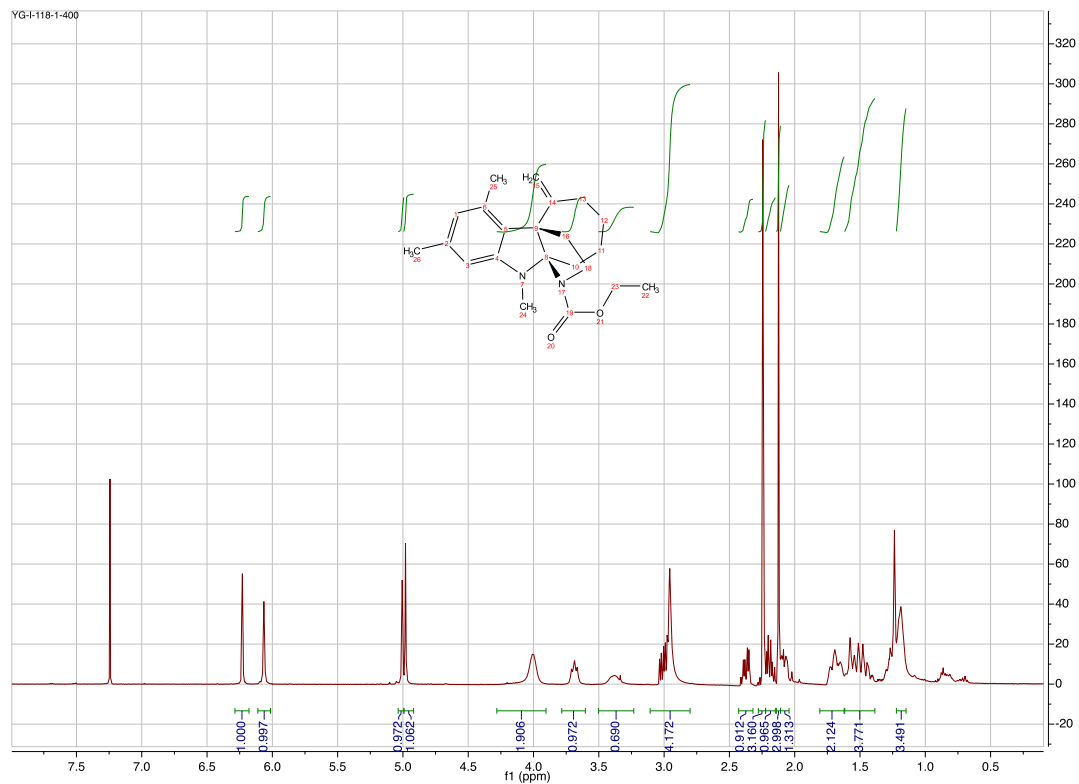
Compound 4



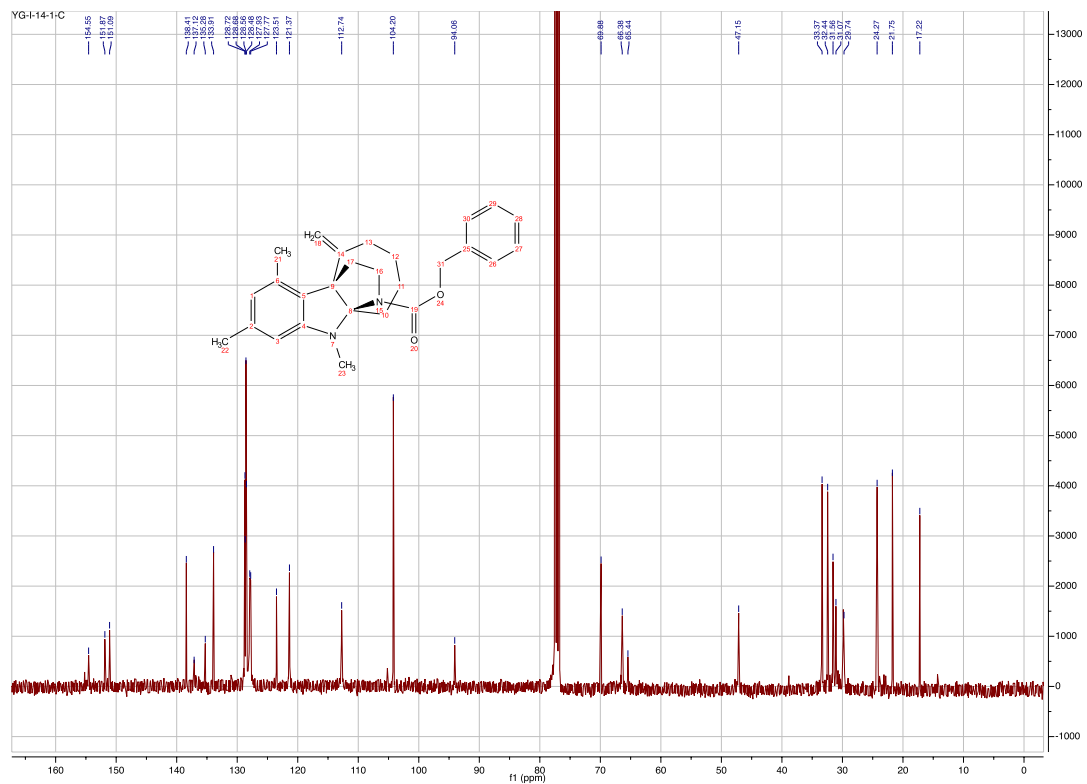
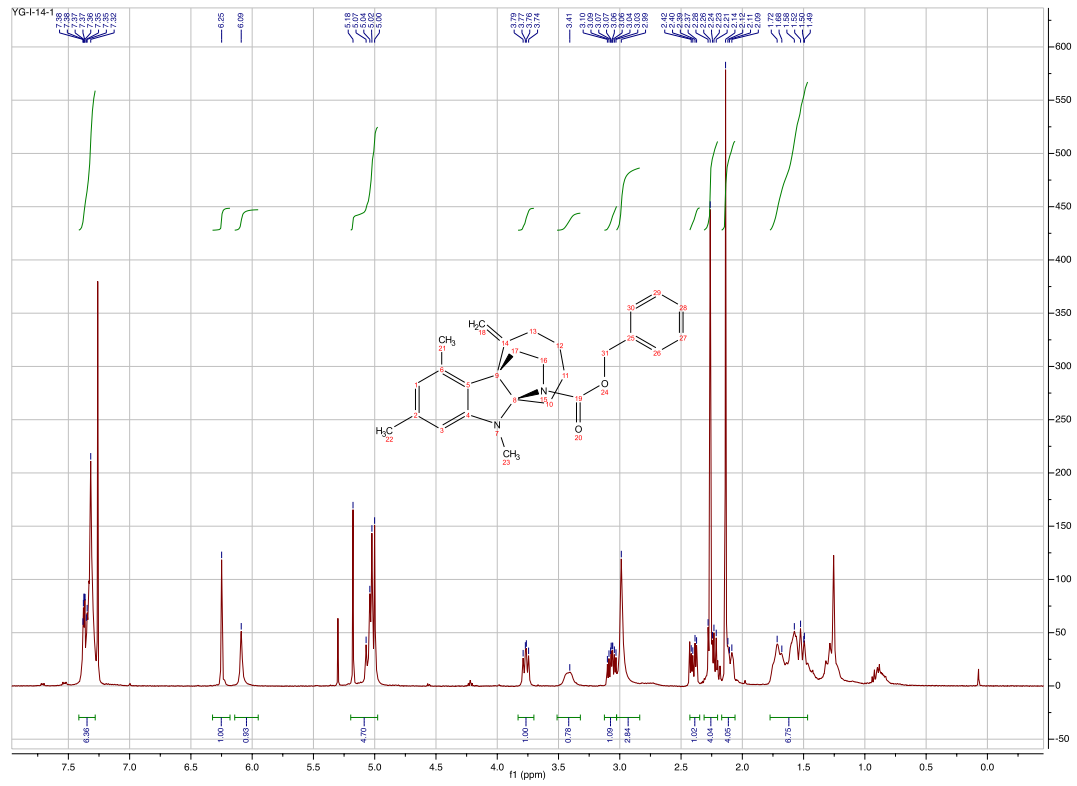
Compound 5



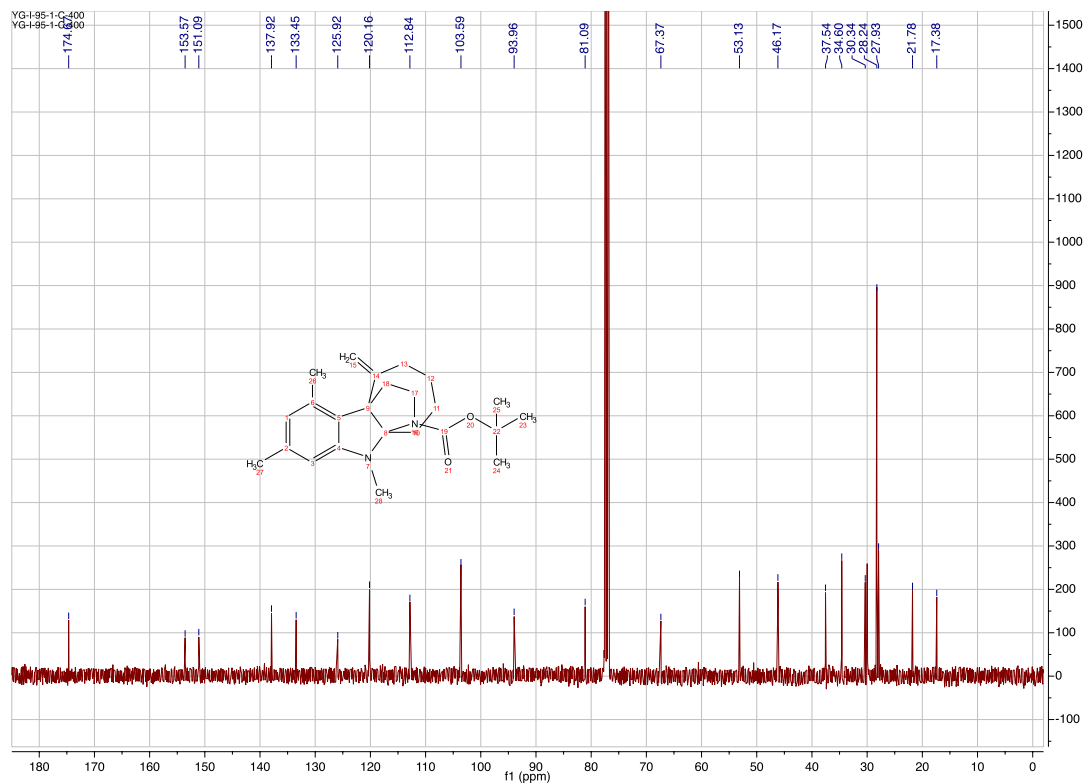
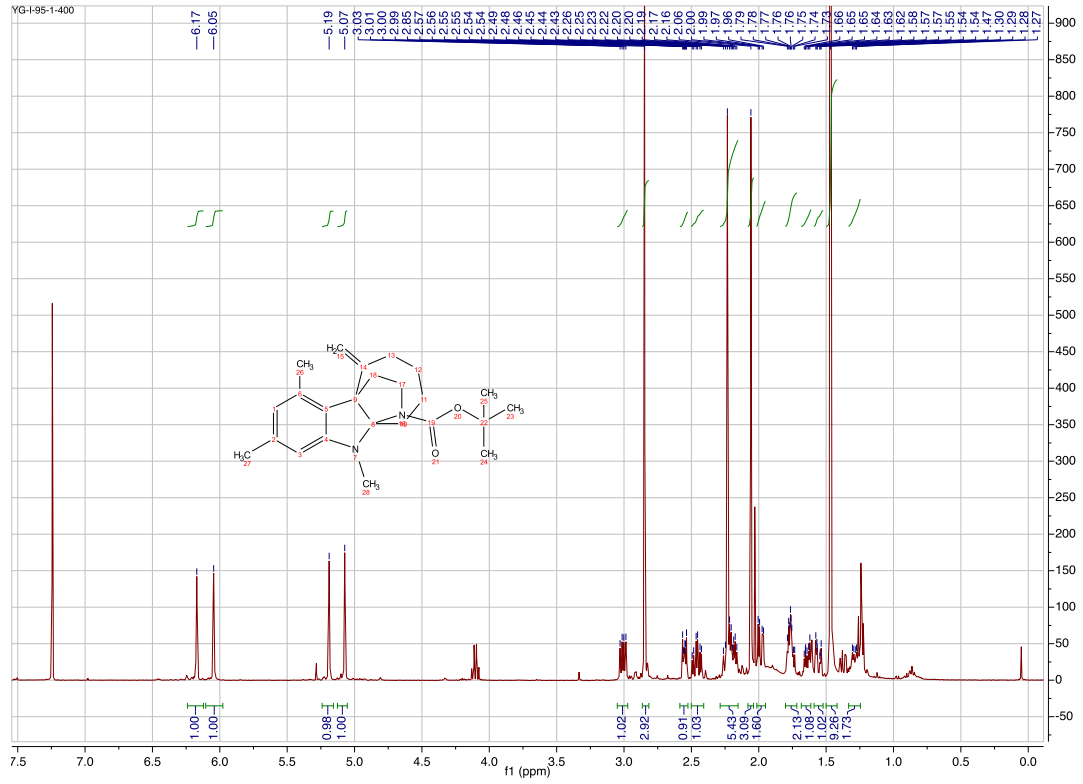
Compound 6a



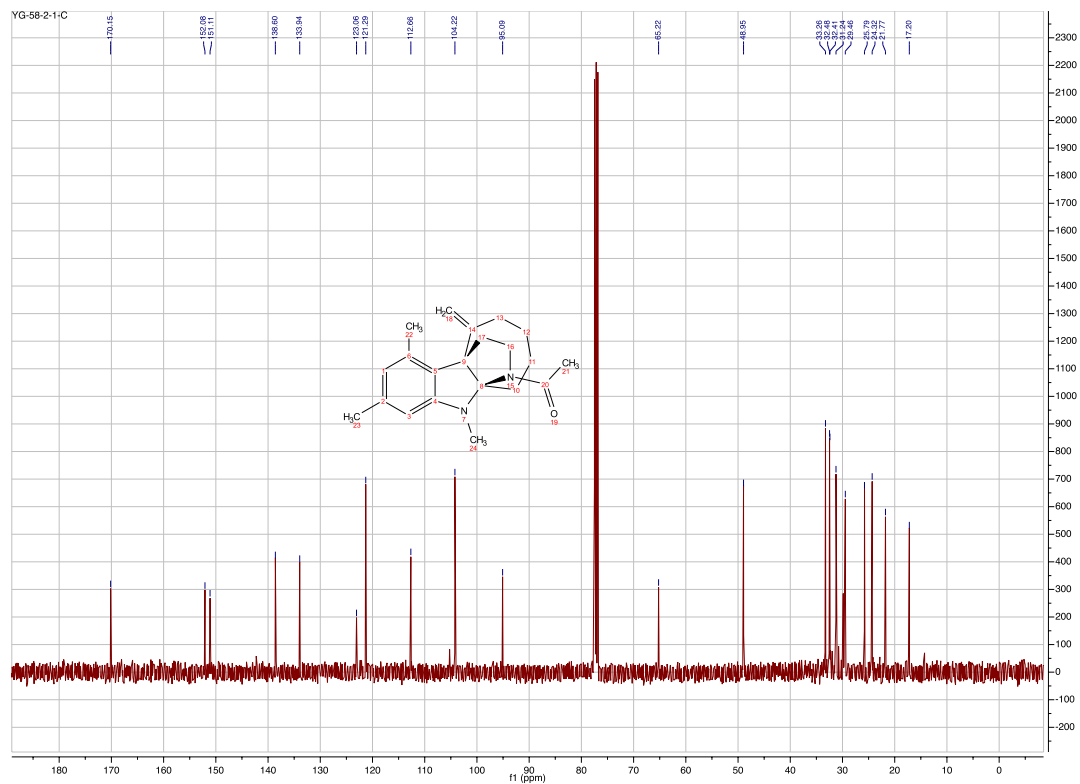
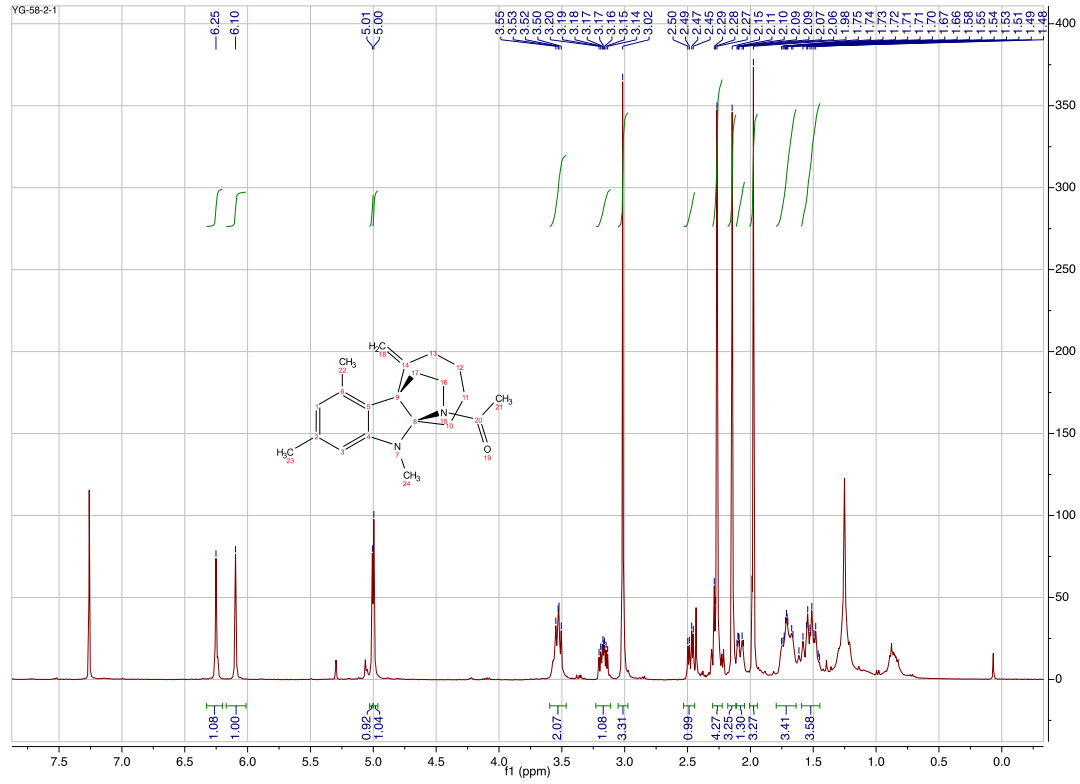
Compound 6b



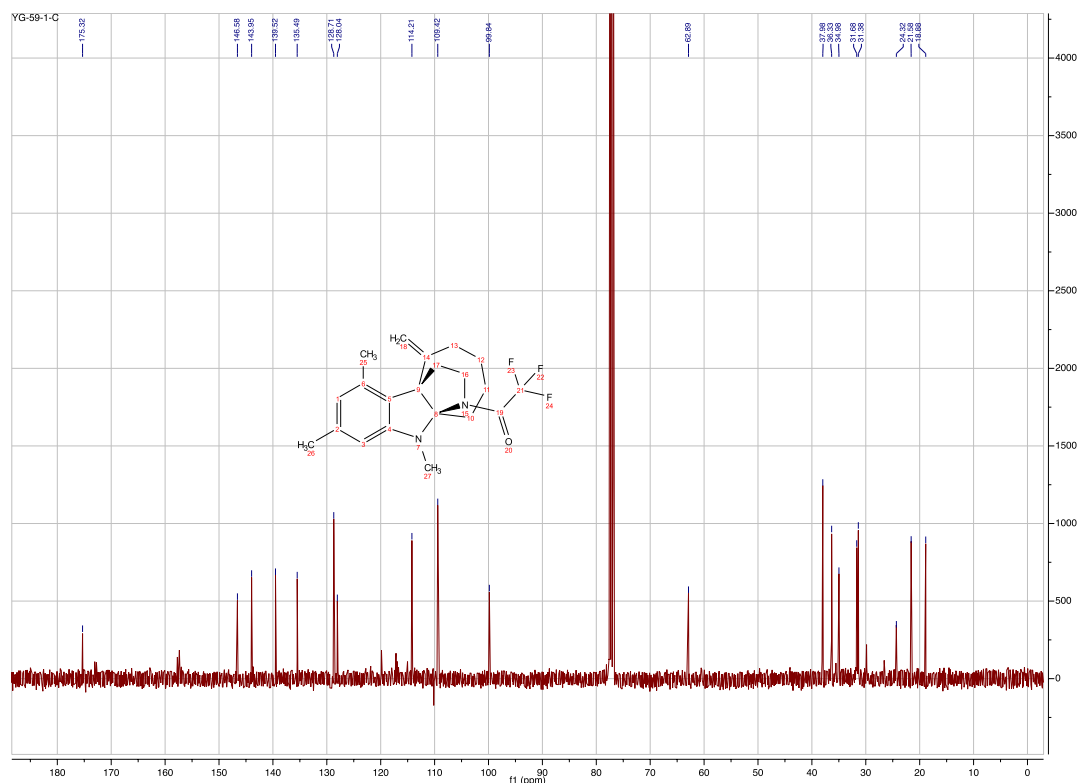
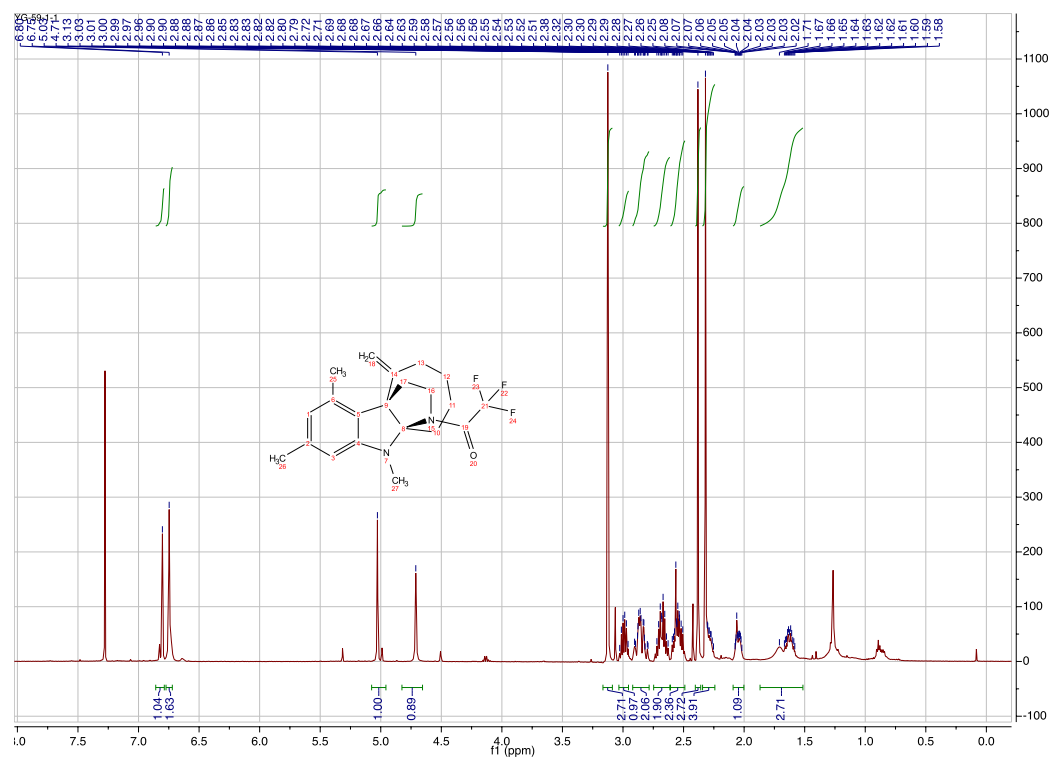
Compound 6c



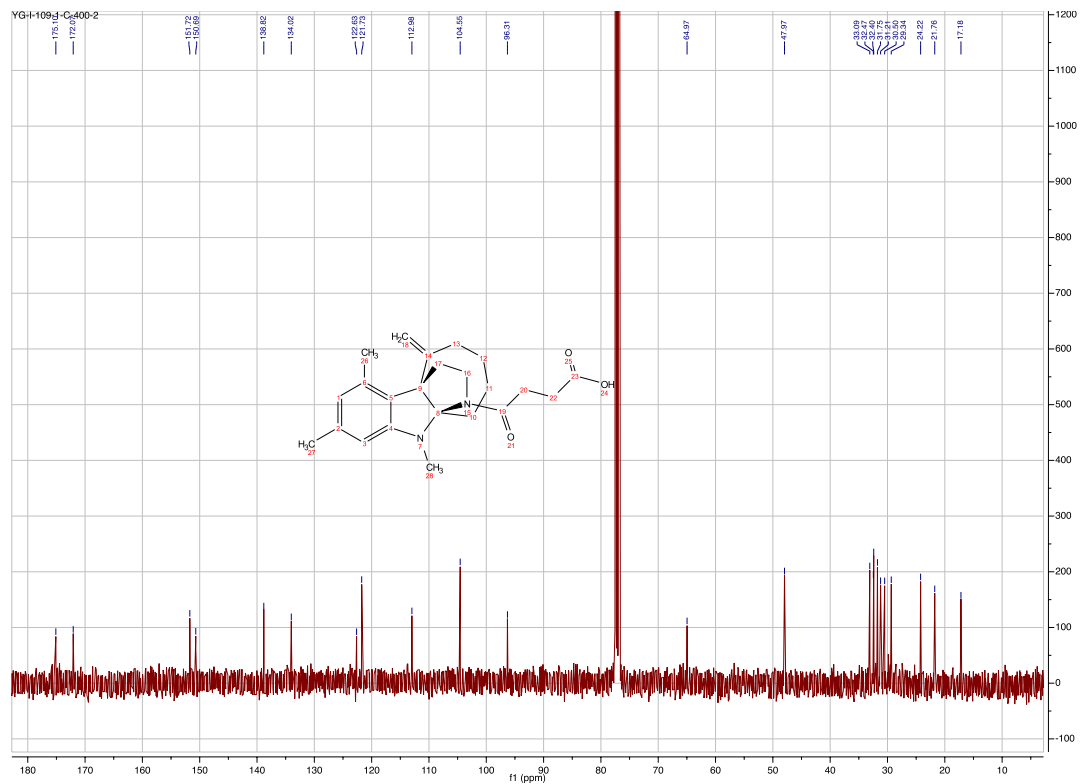
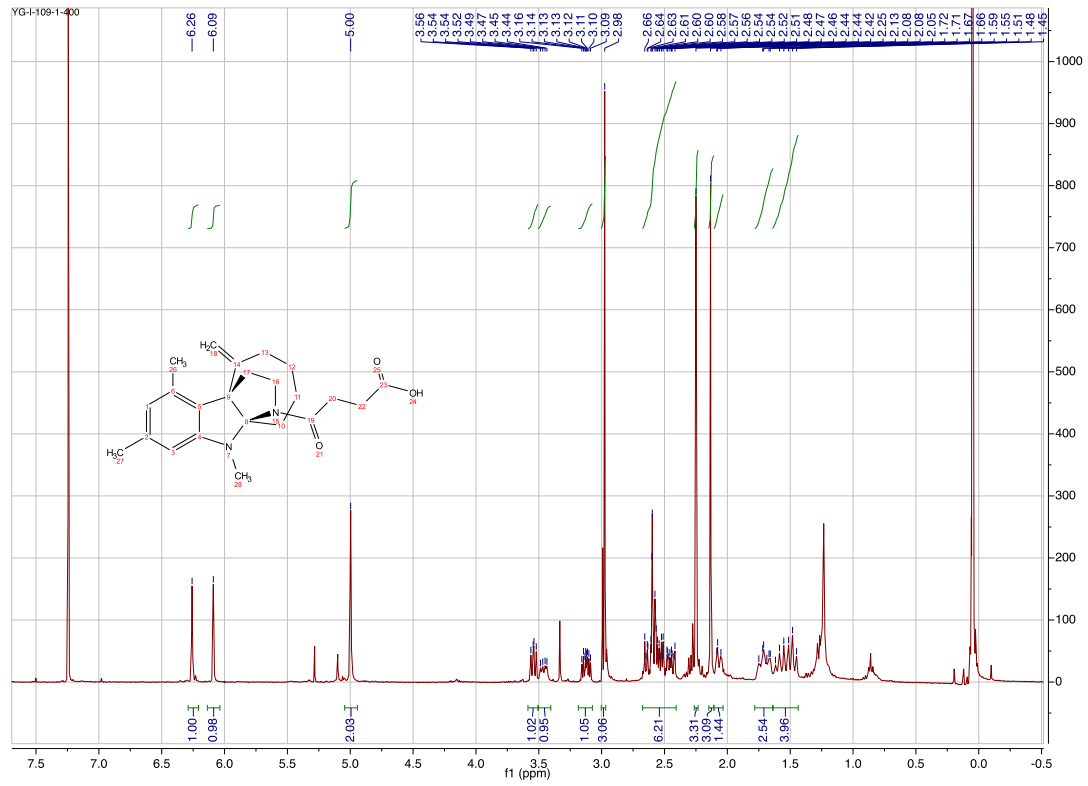
Compound 6d



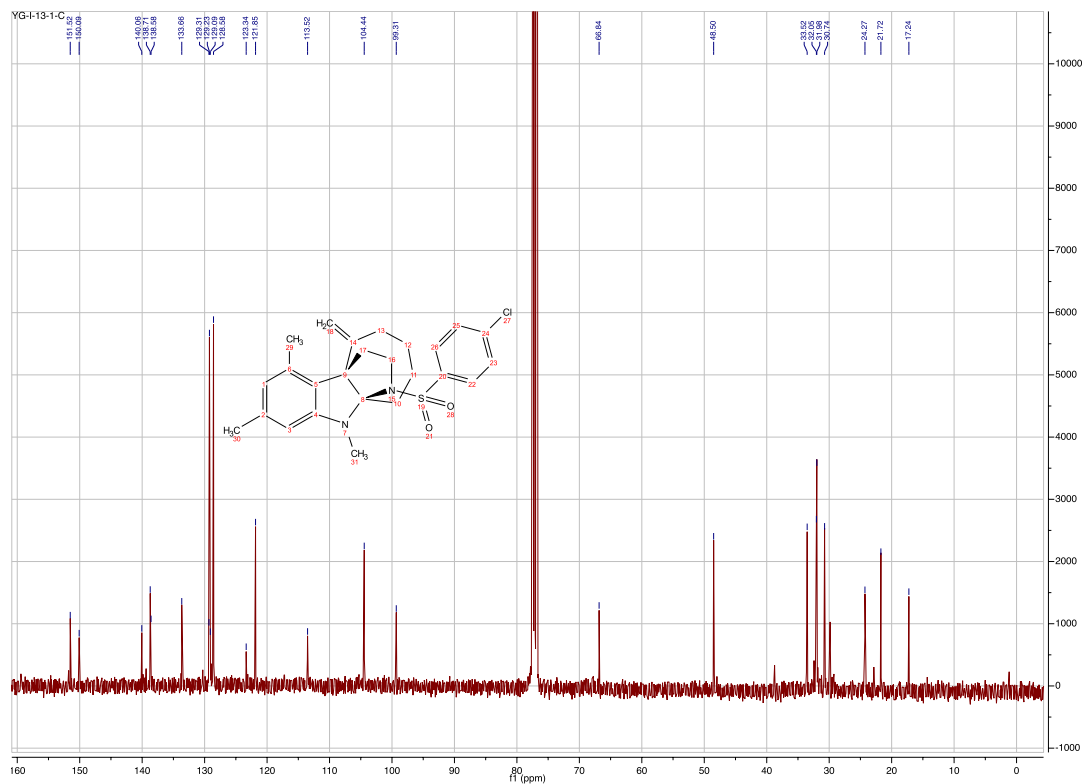
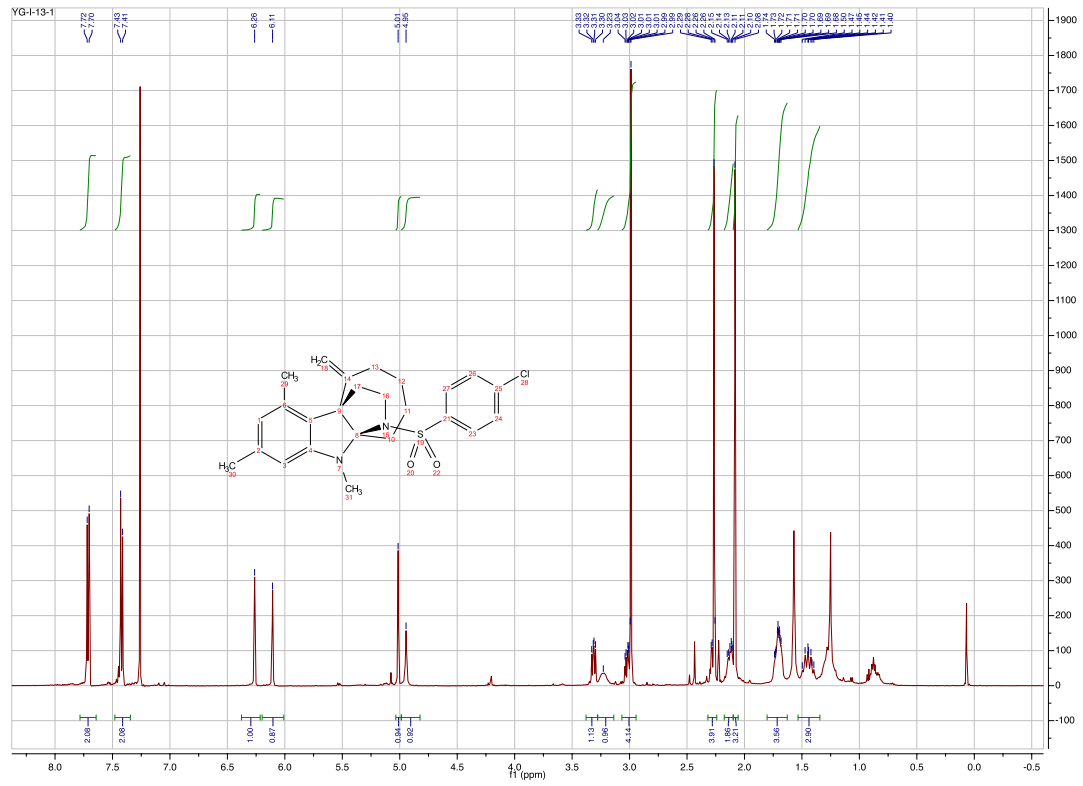
Compound 6e



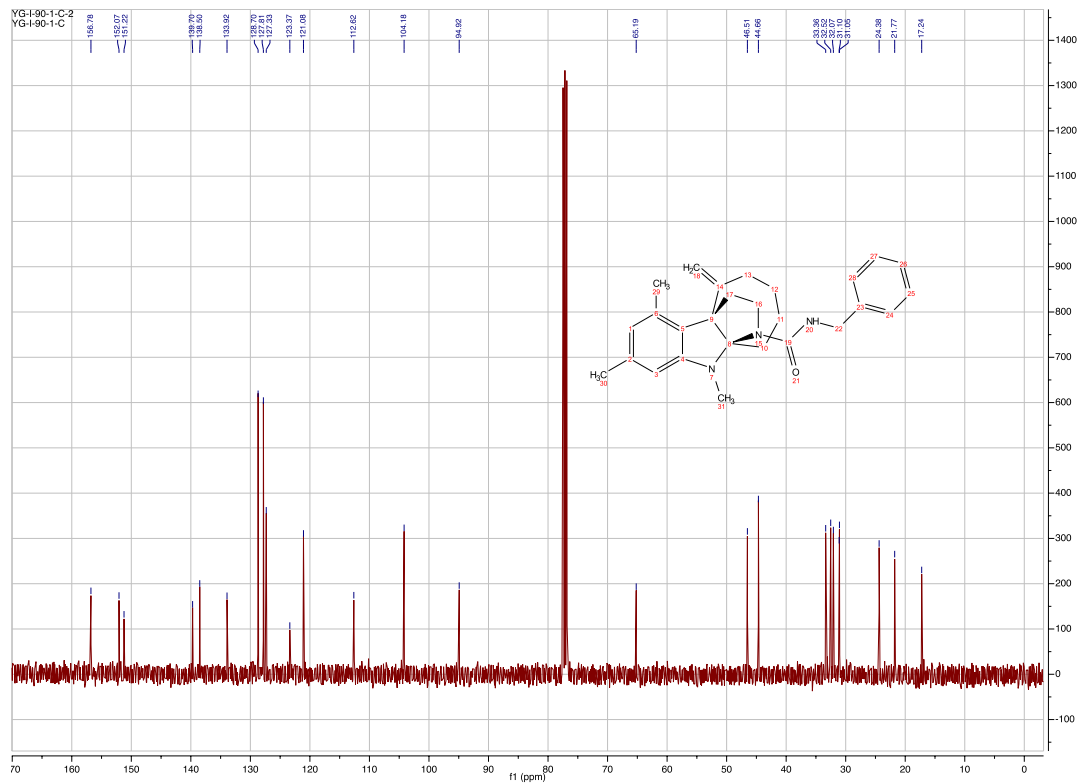
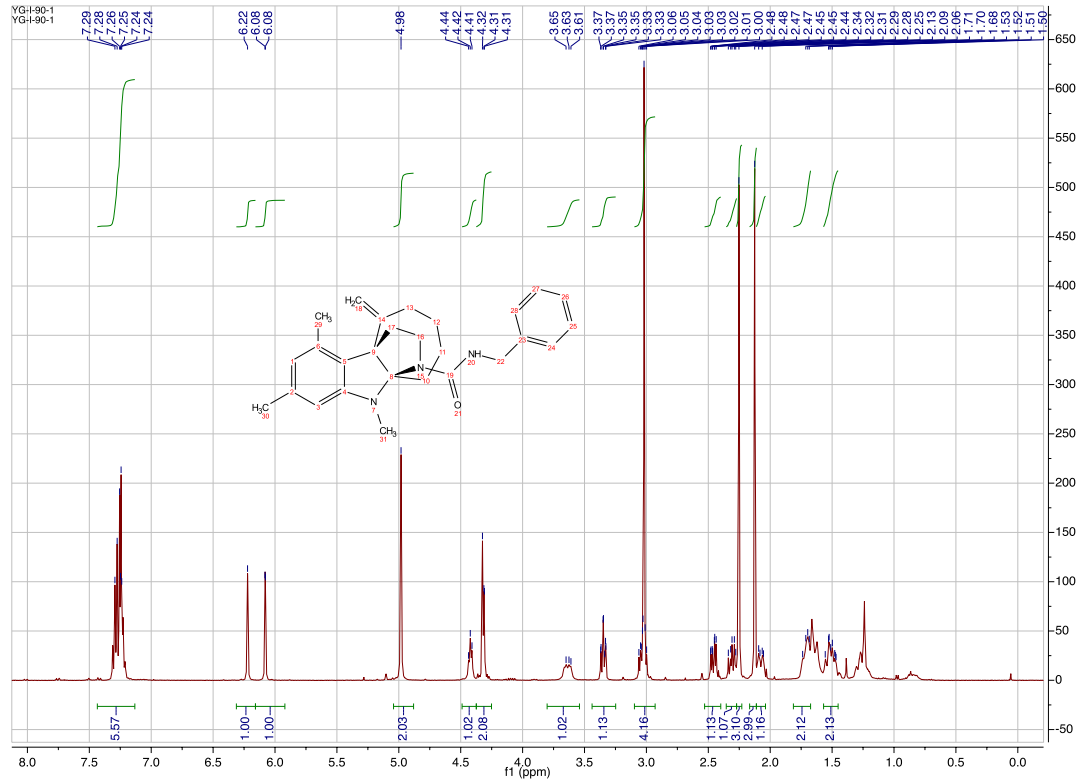
Compound 6f



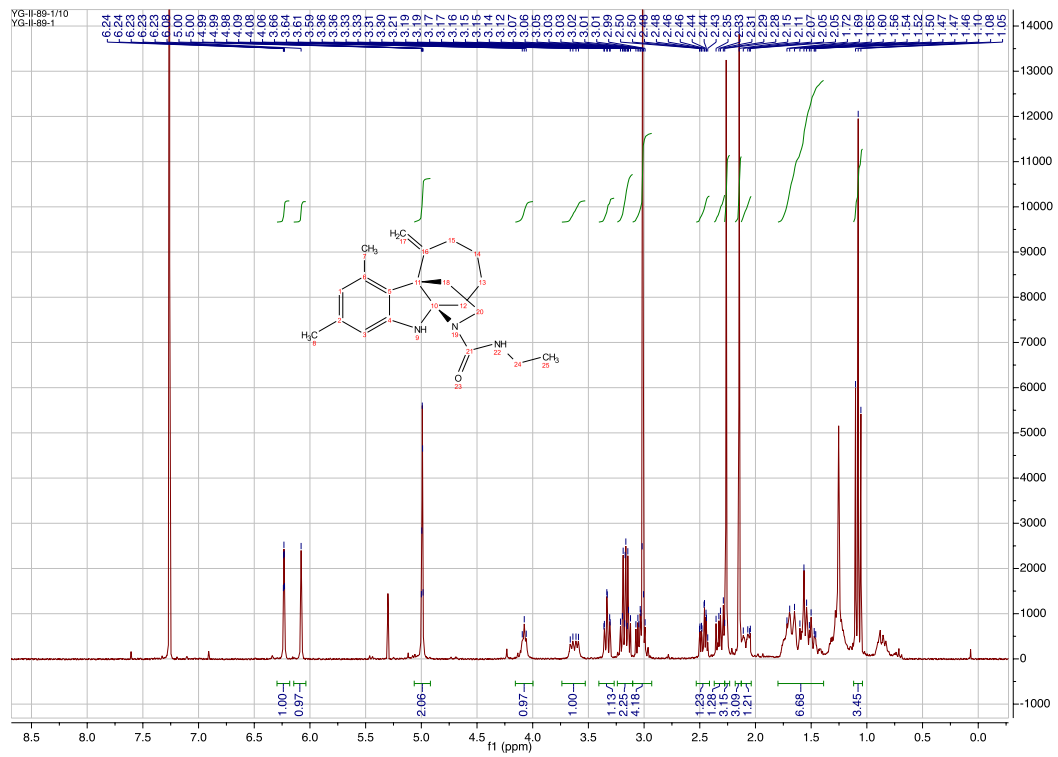
Compound 6g



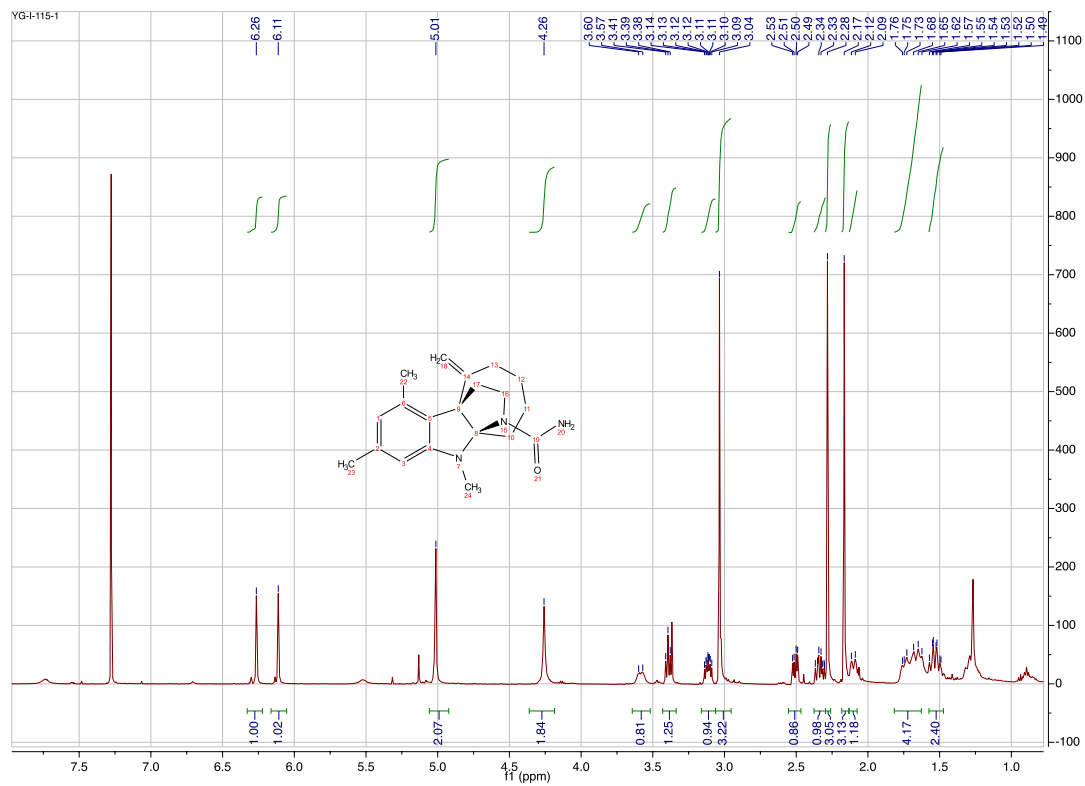
Compound 6h



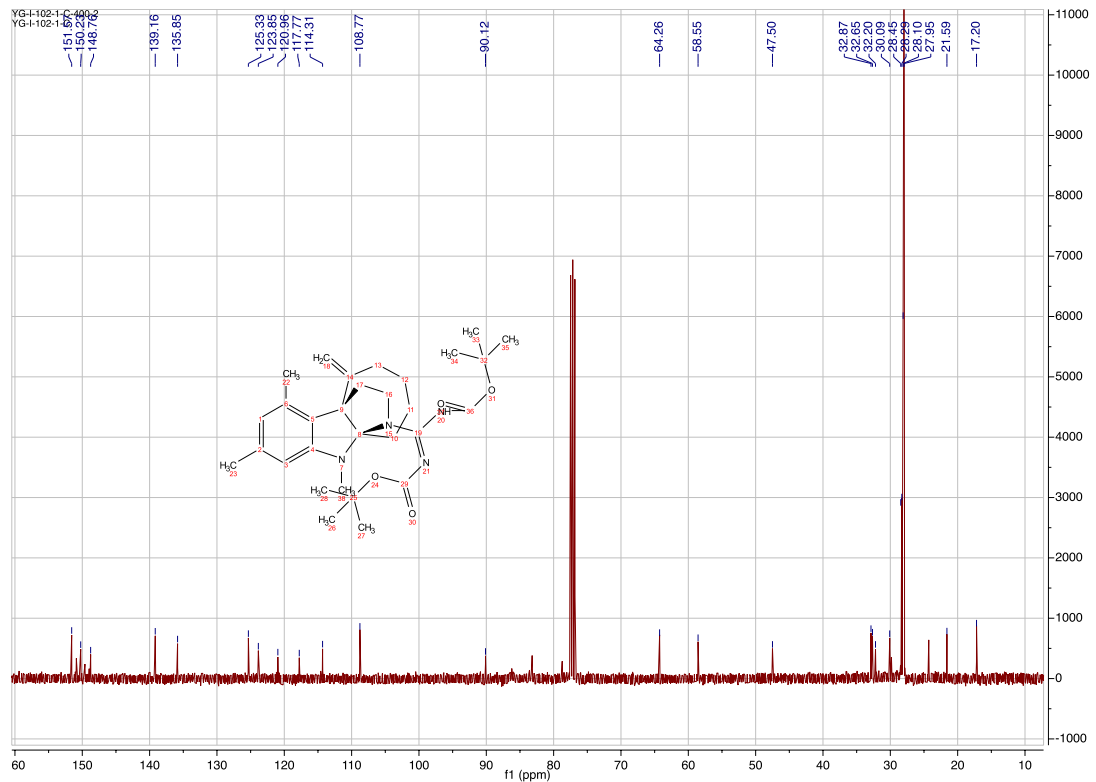
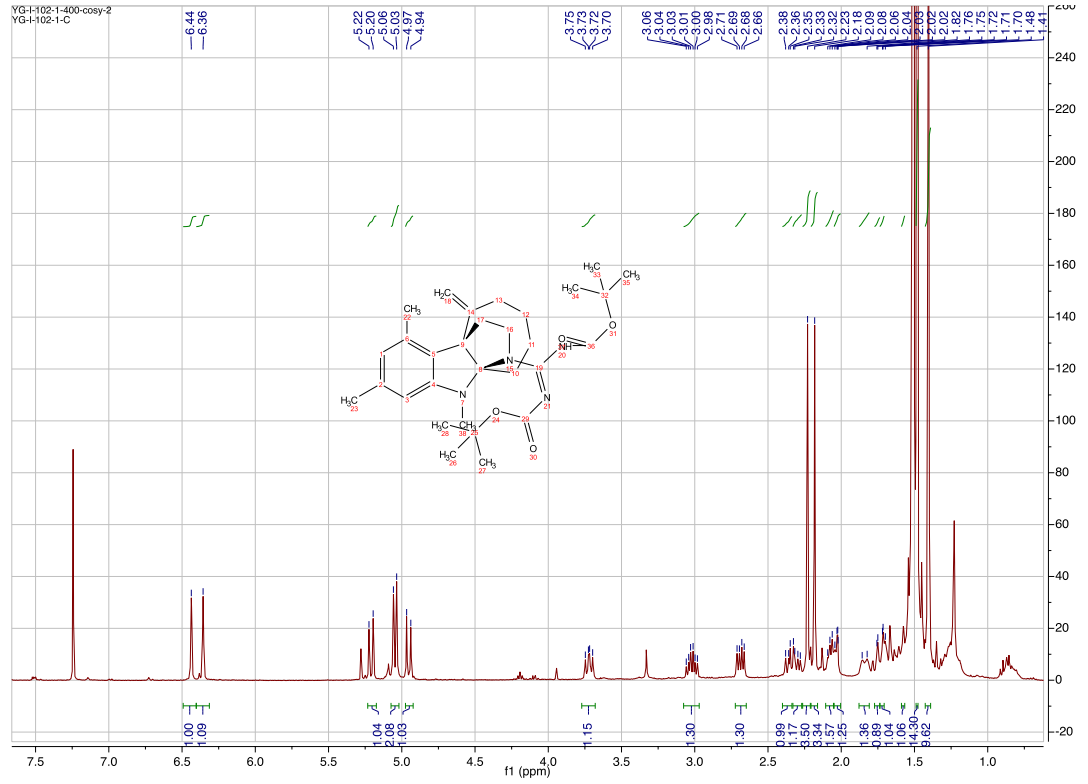
Compound **6i**



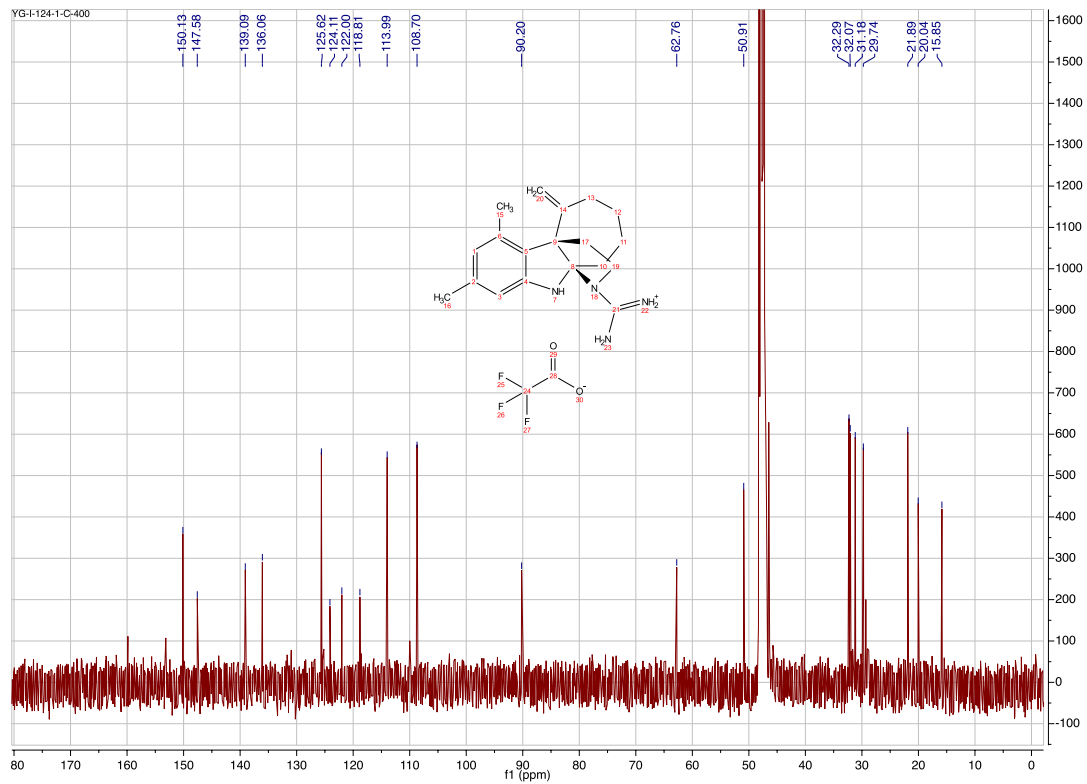
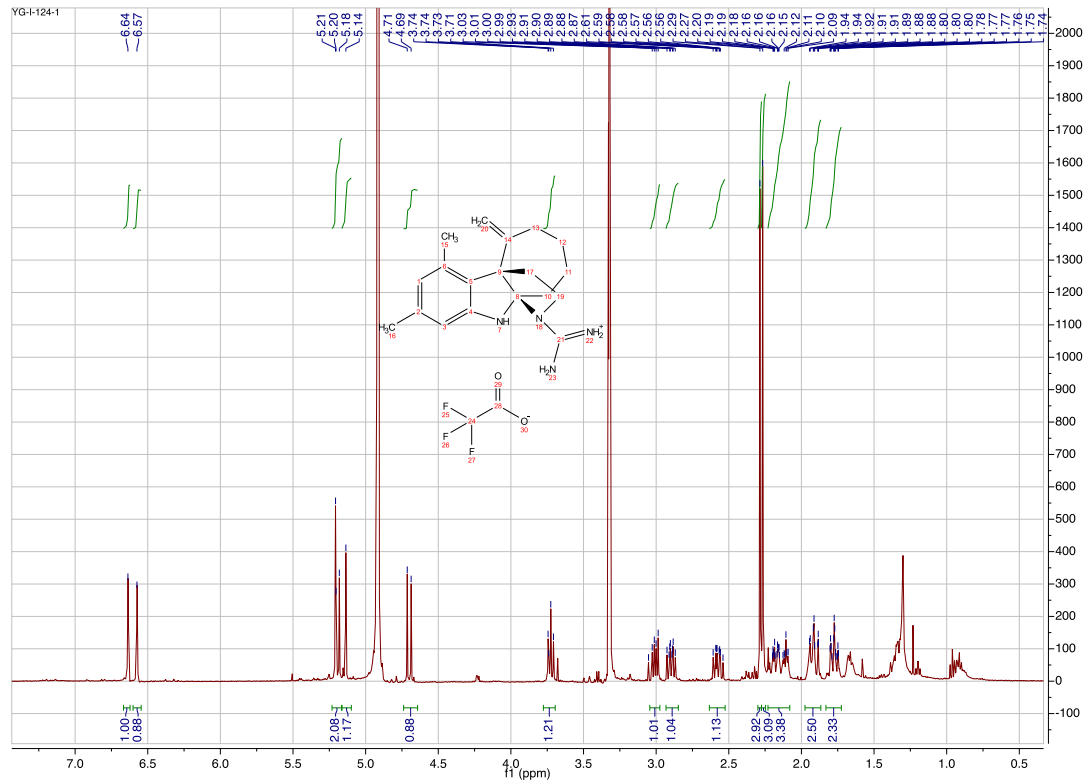
Compound **6j**



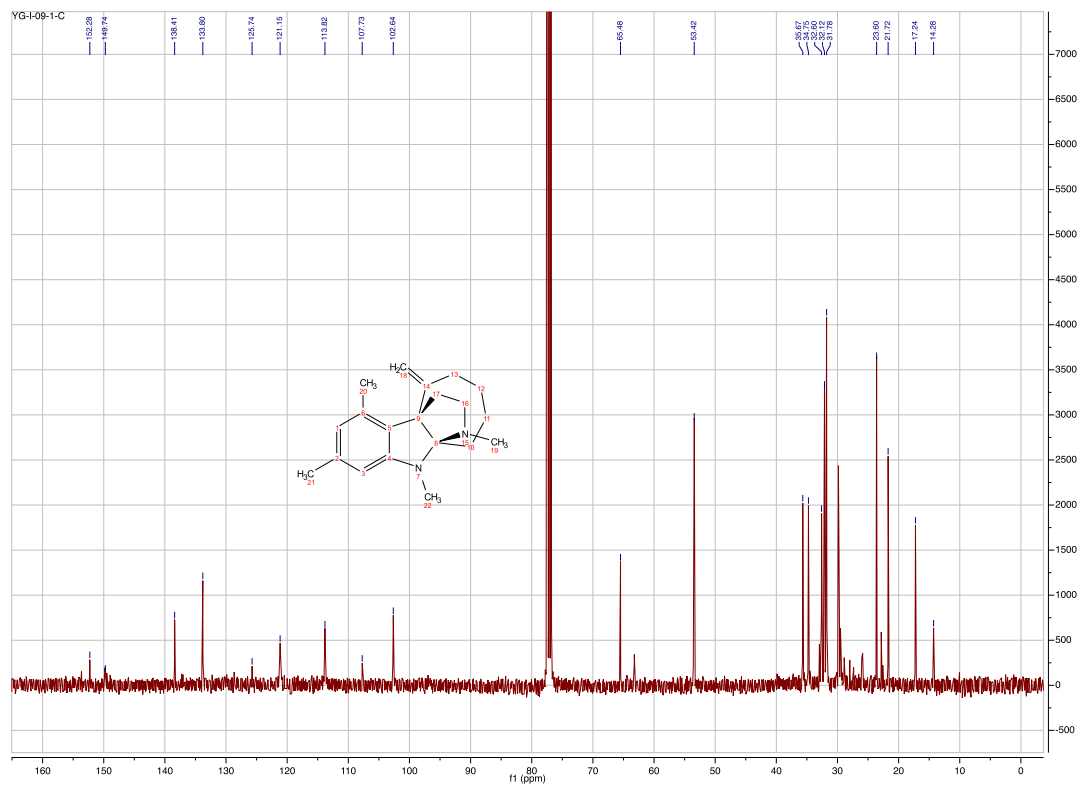
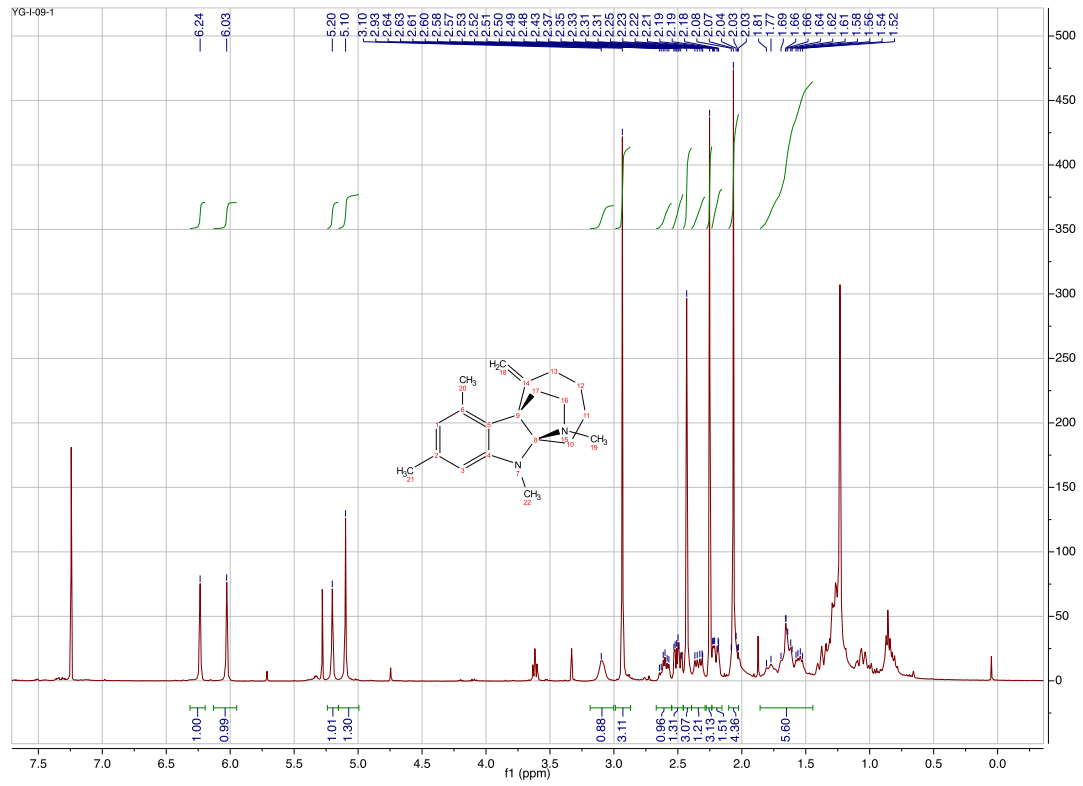
Compound Boc-6k



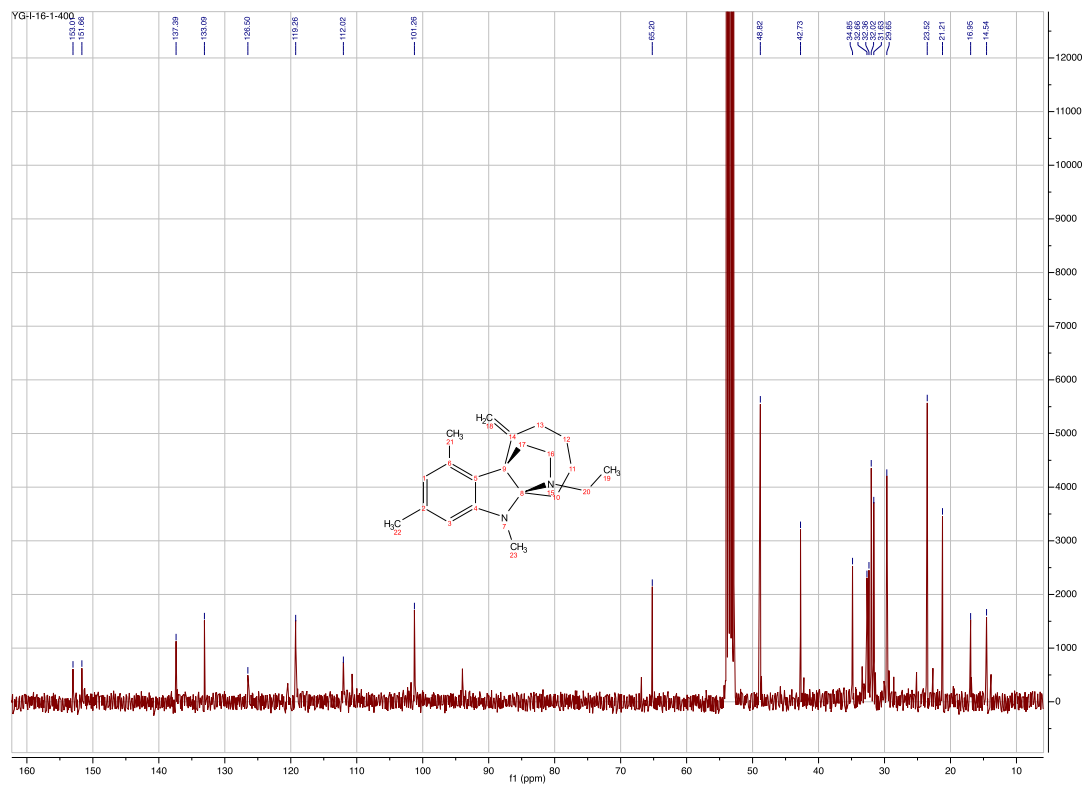
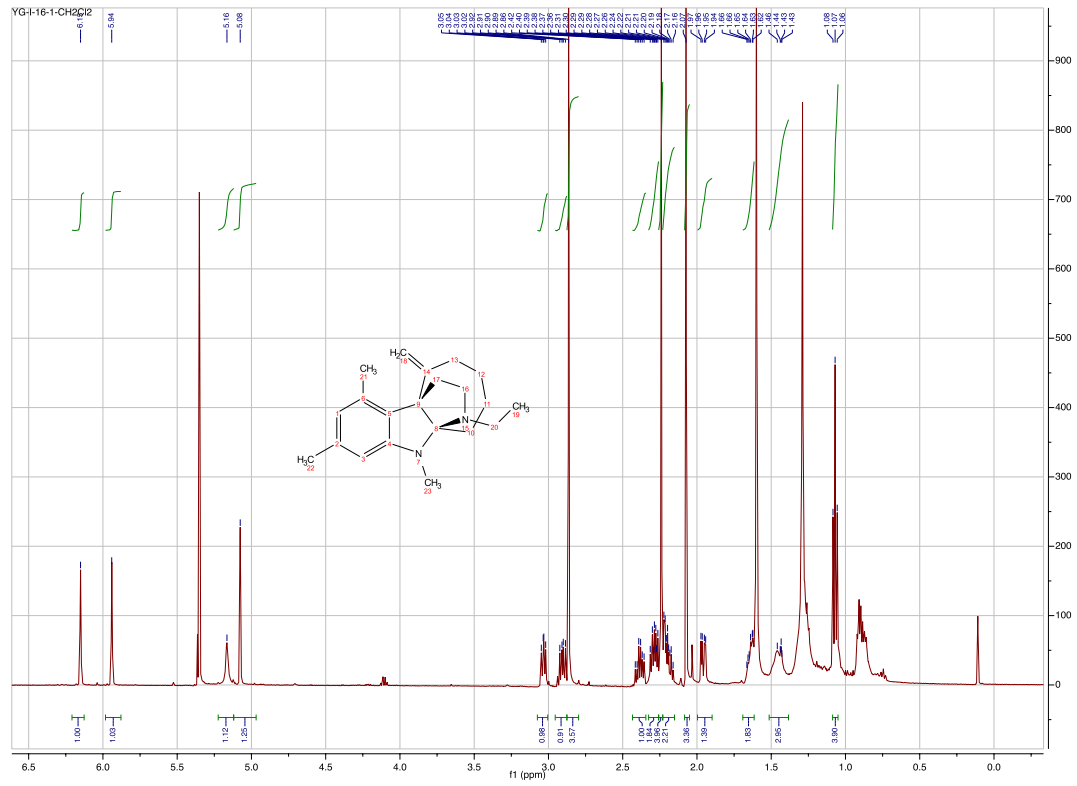
Compound 6k



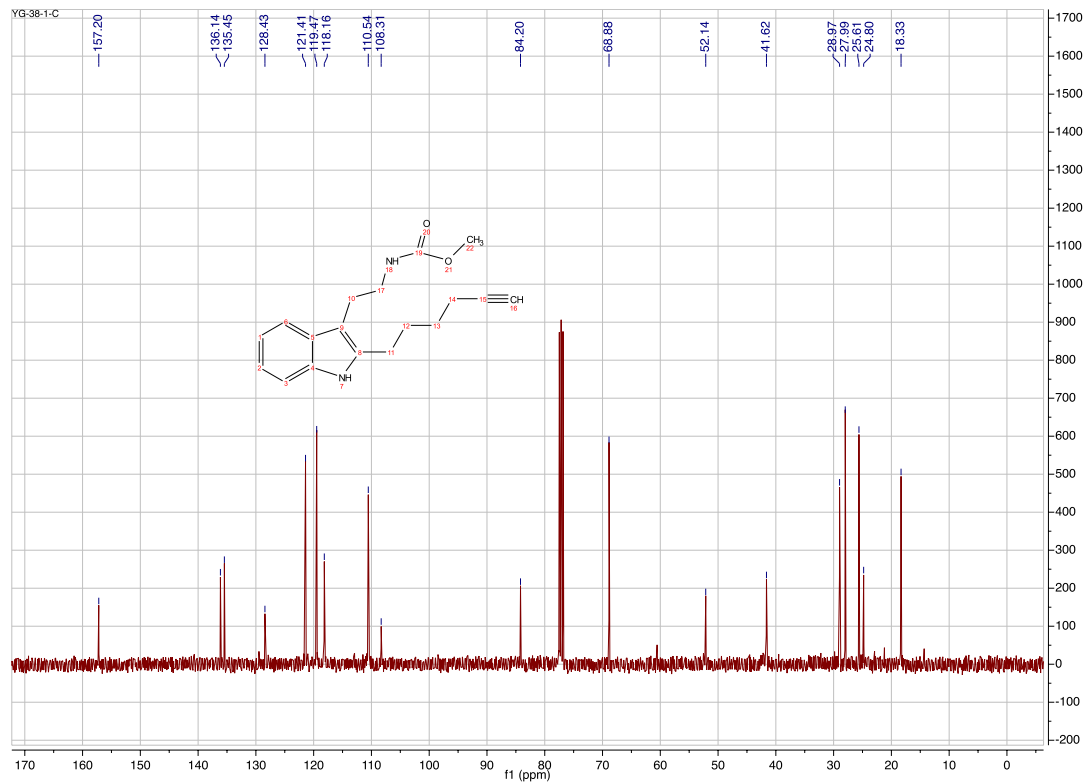
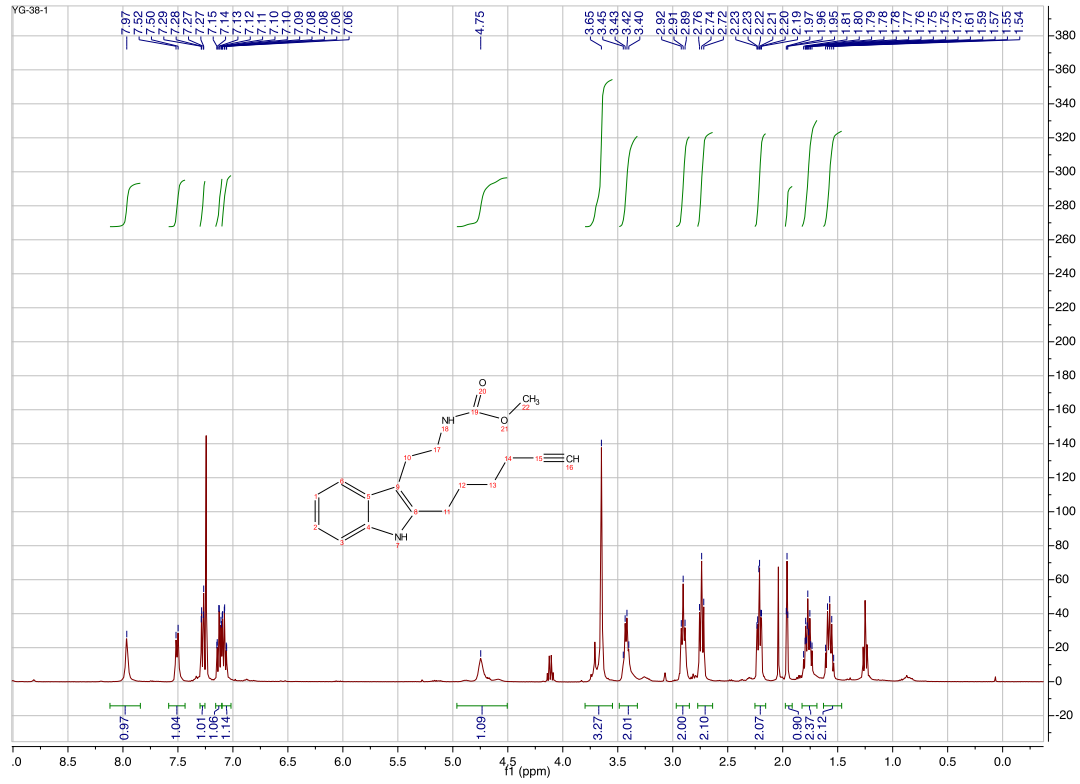
Compound **6l**



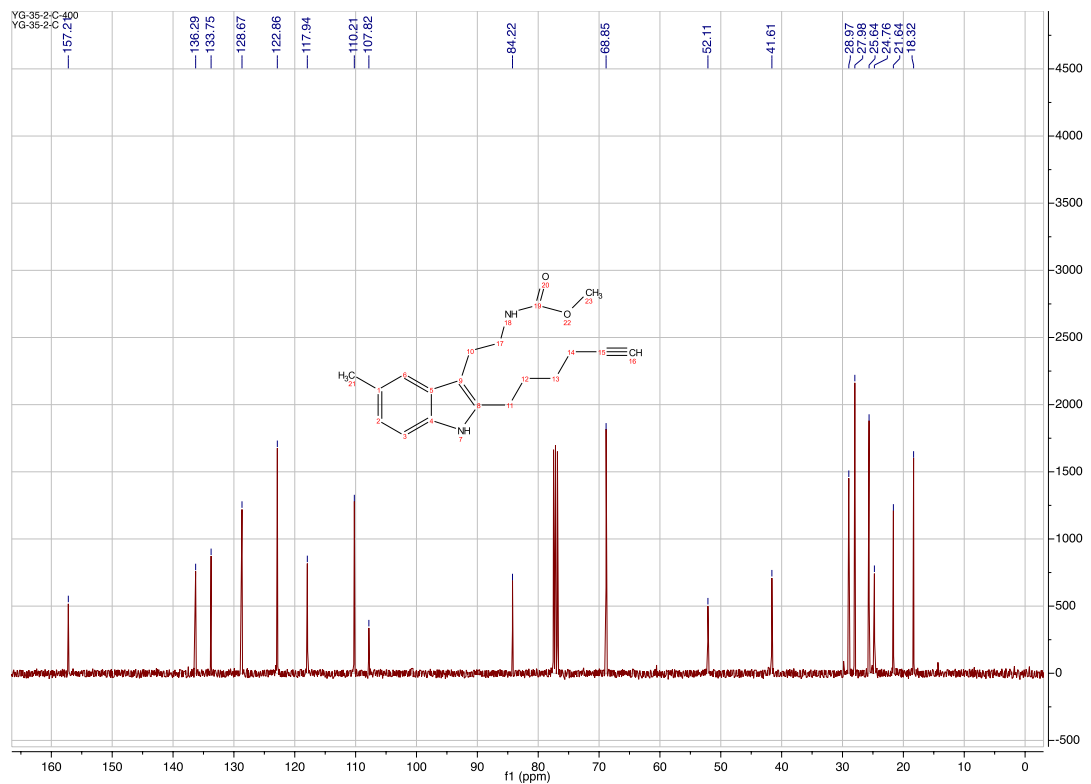
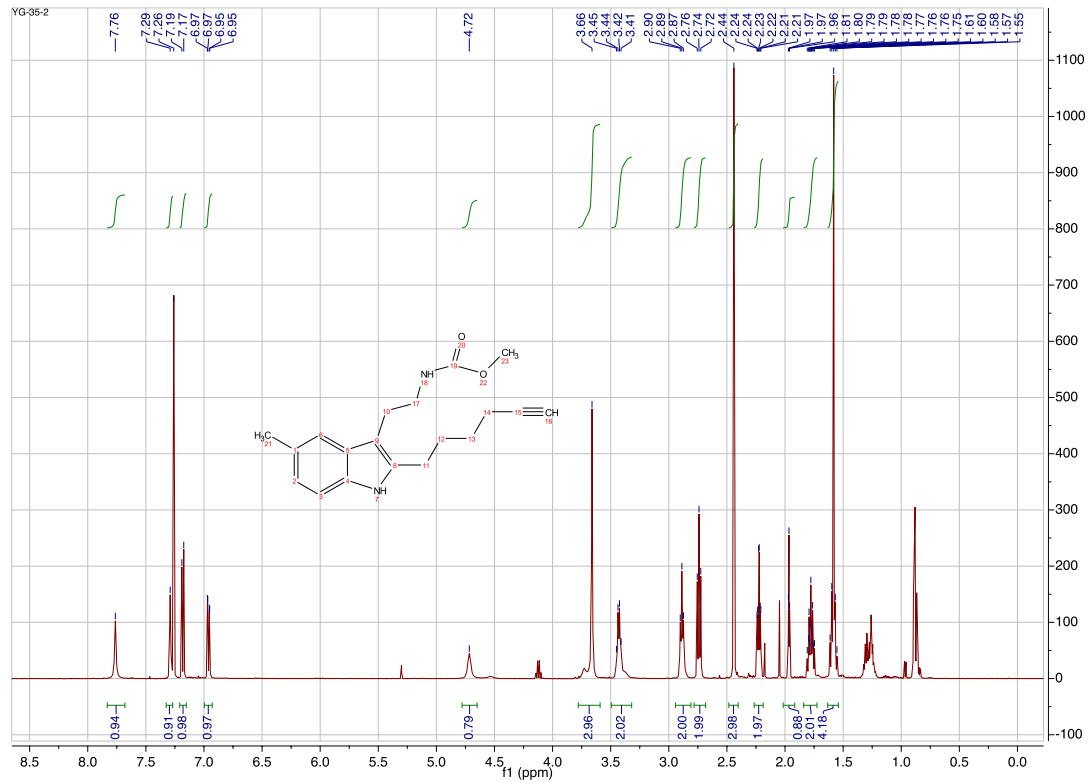
Compound **6m**



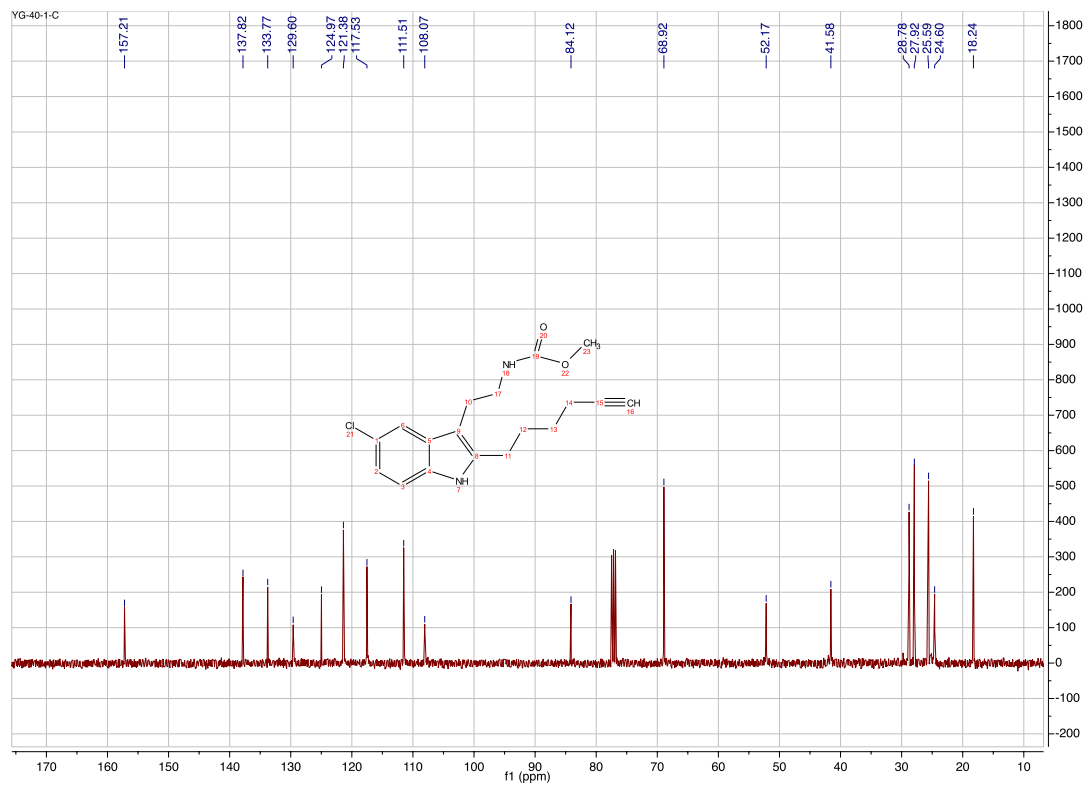
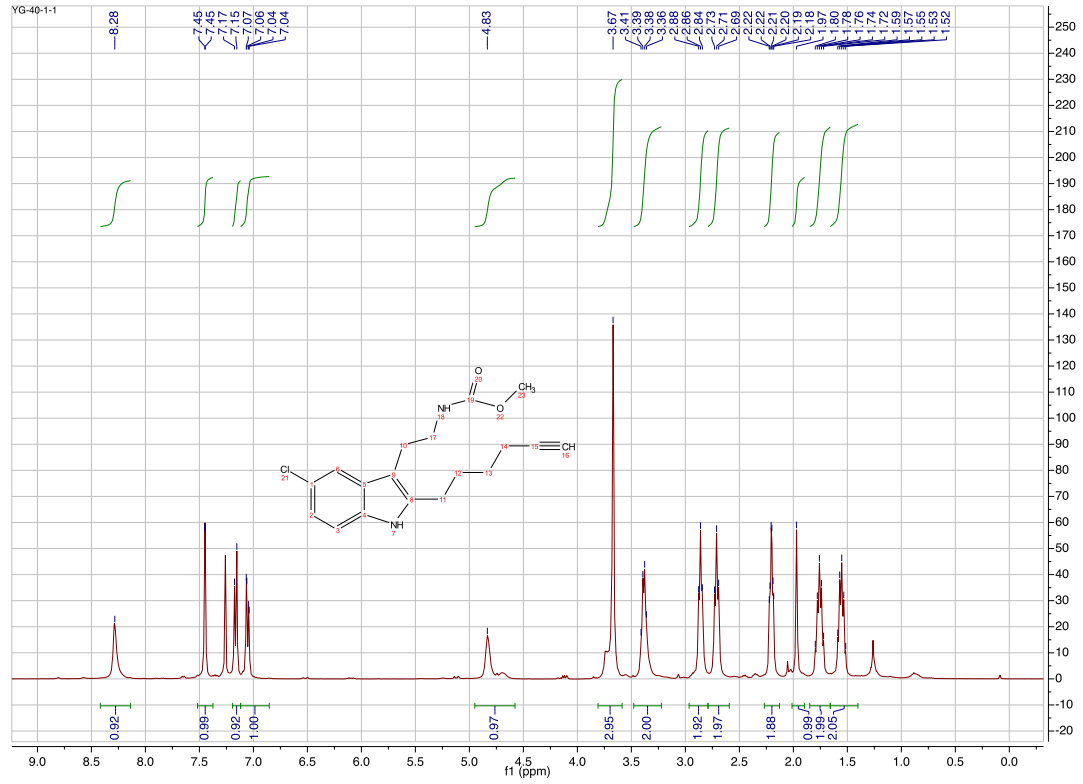
Compound 9c



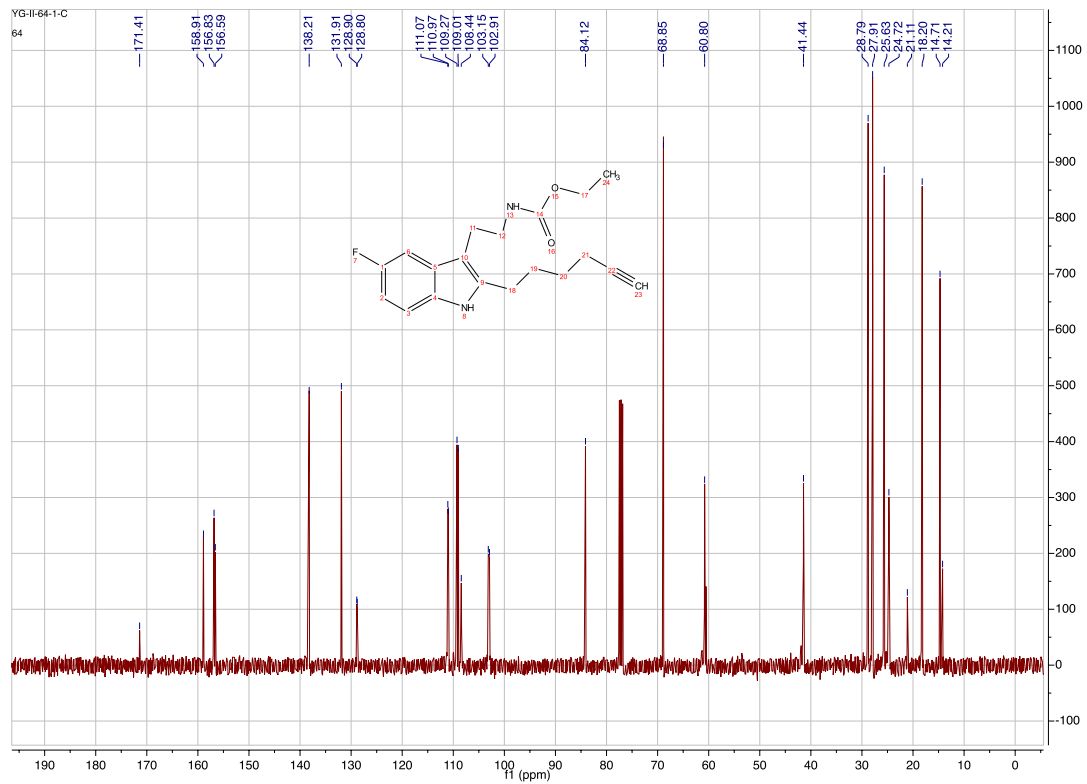
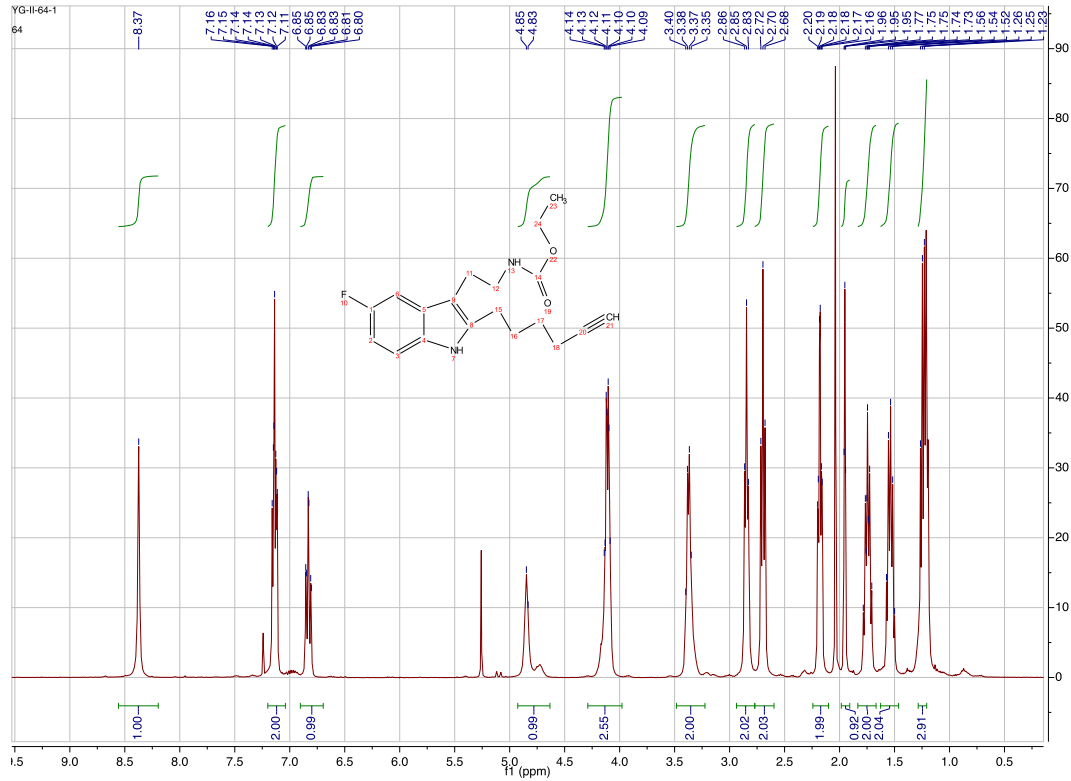
Compound 9d



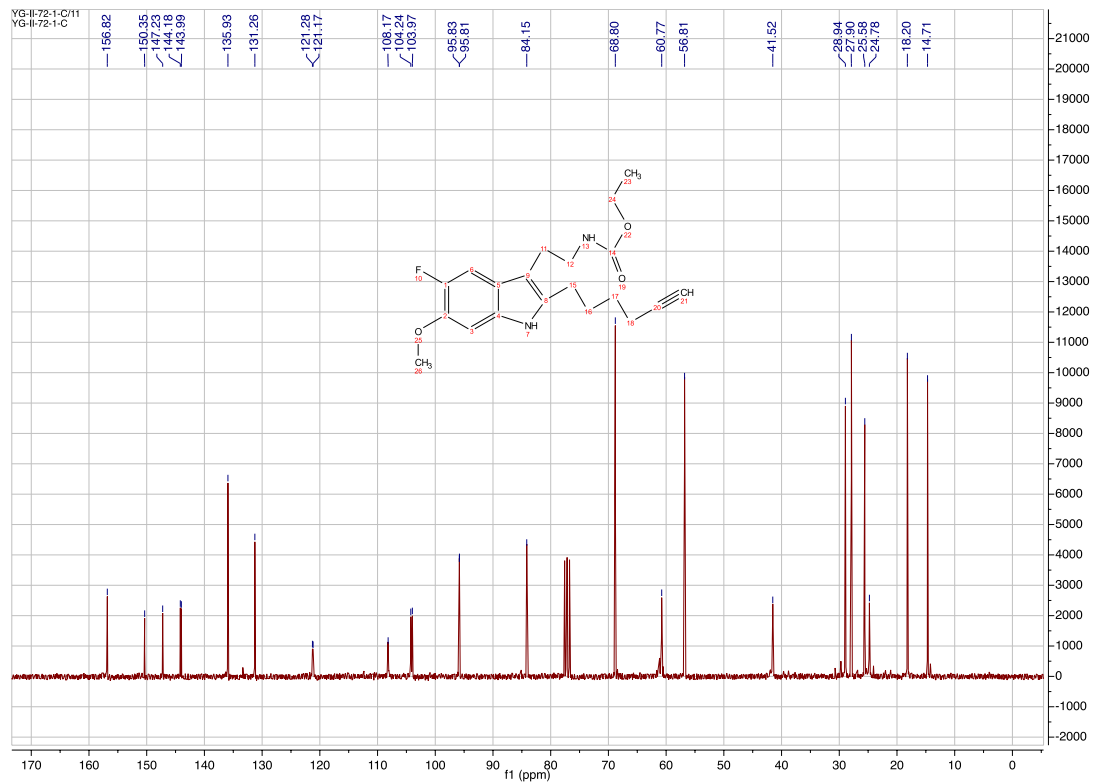
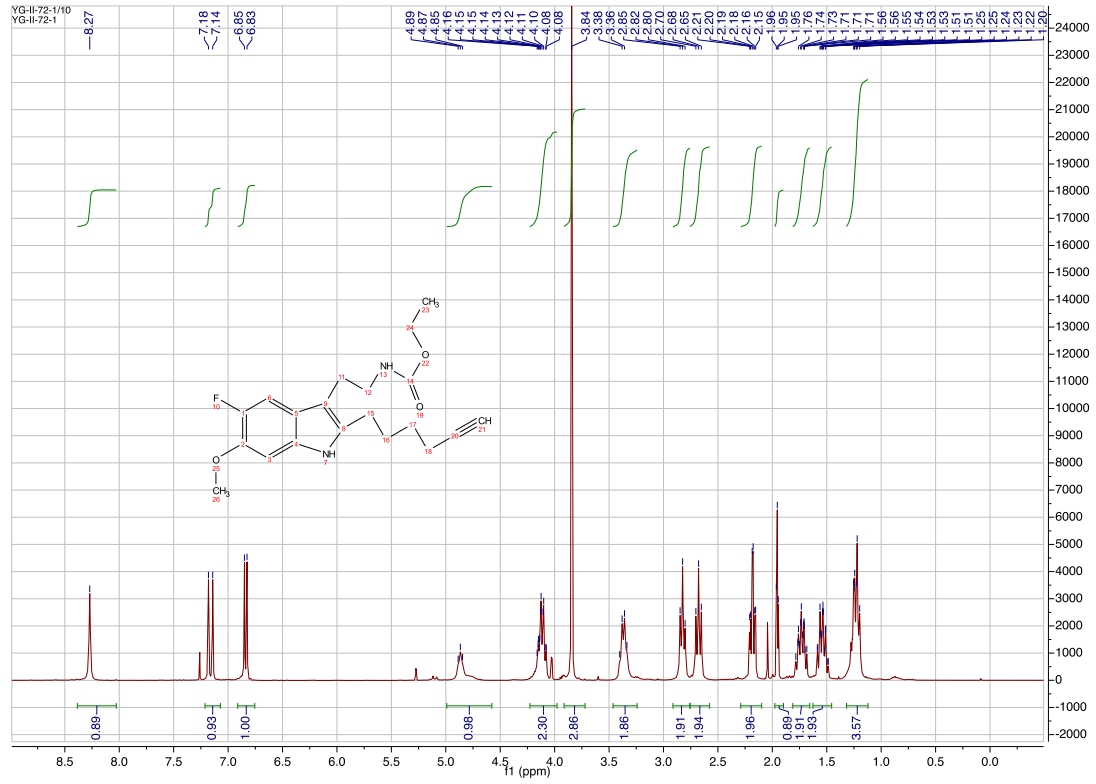
Compound 9e



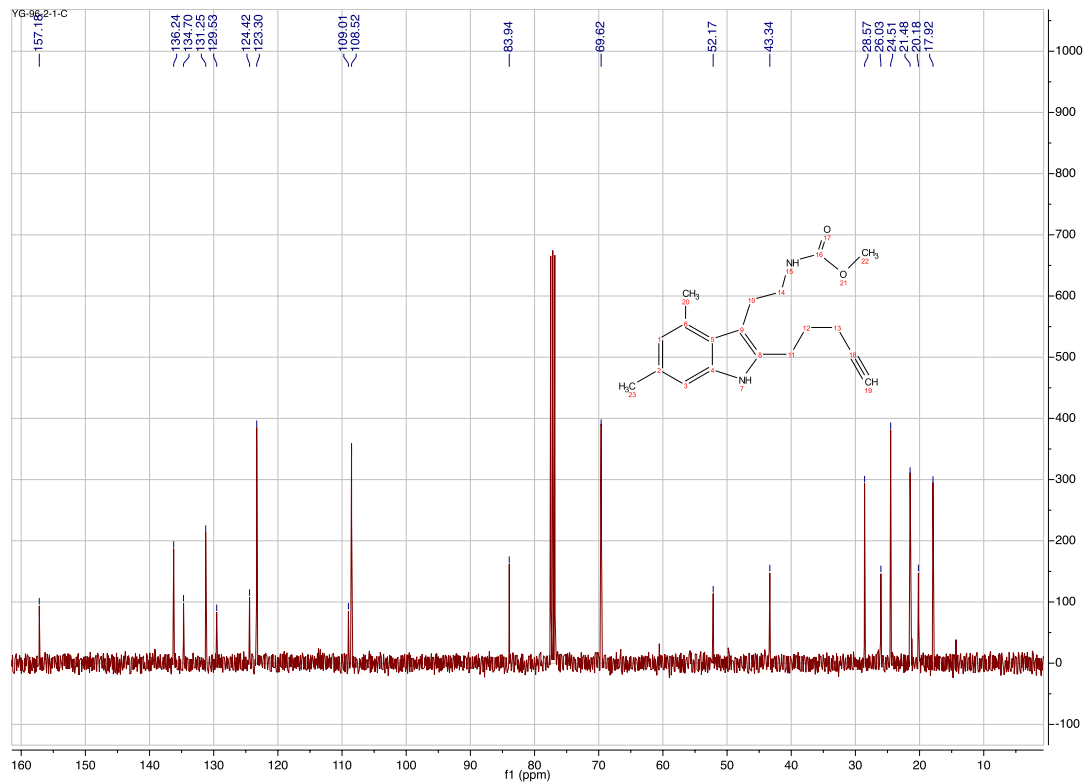
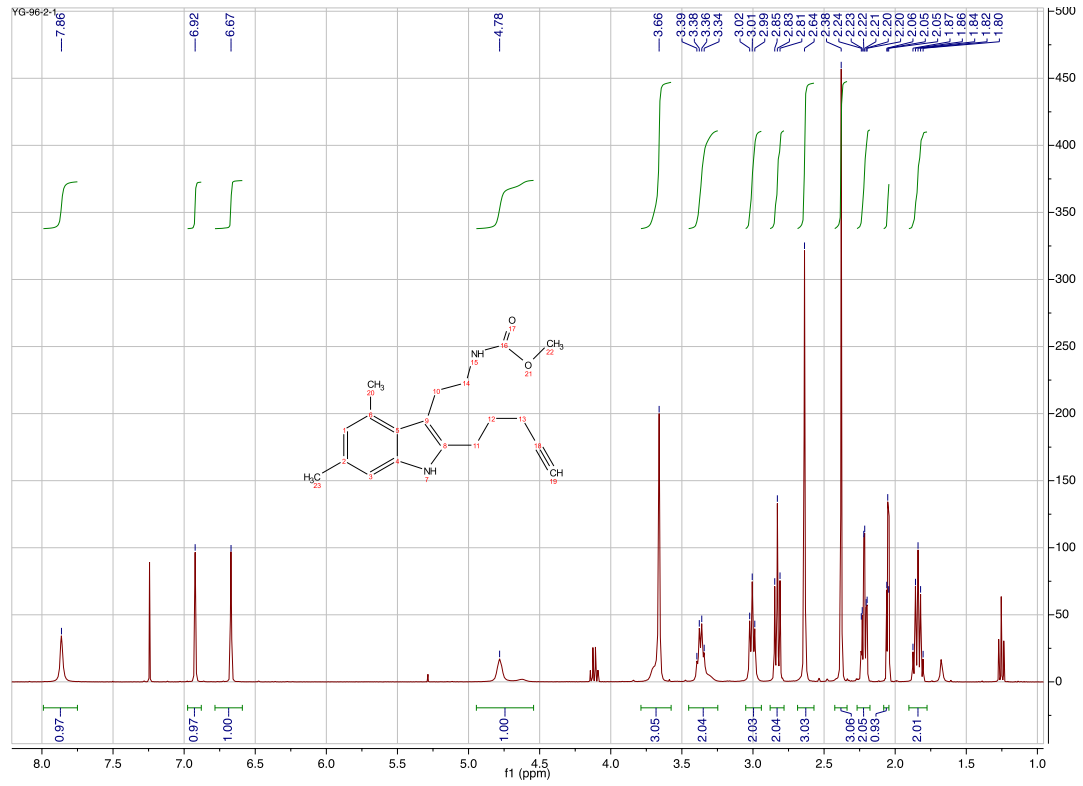
Compound 9f



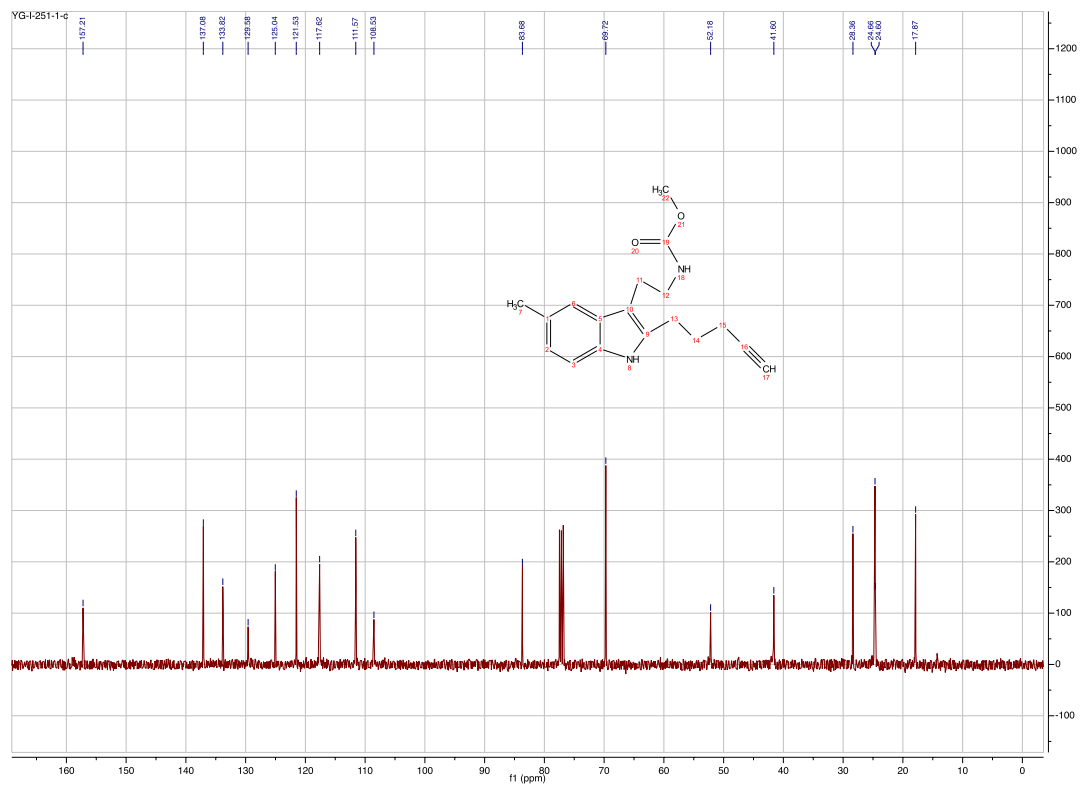
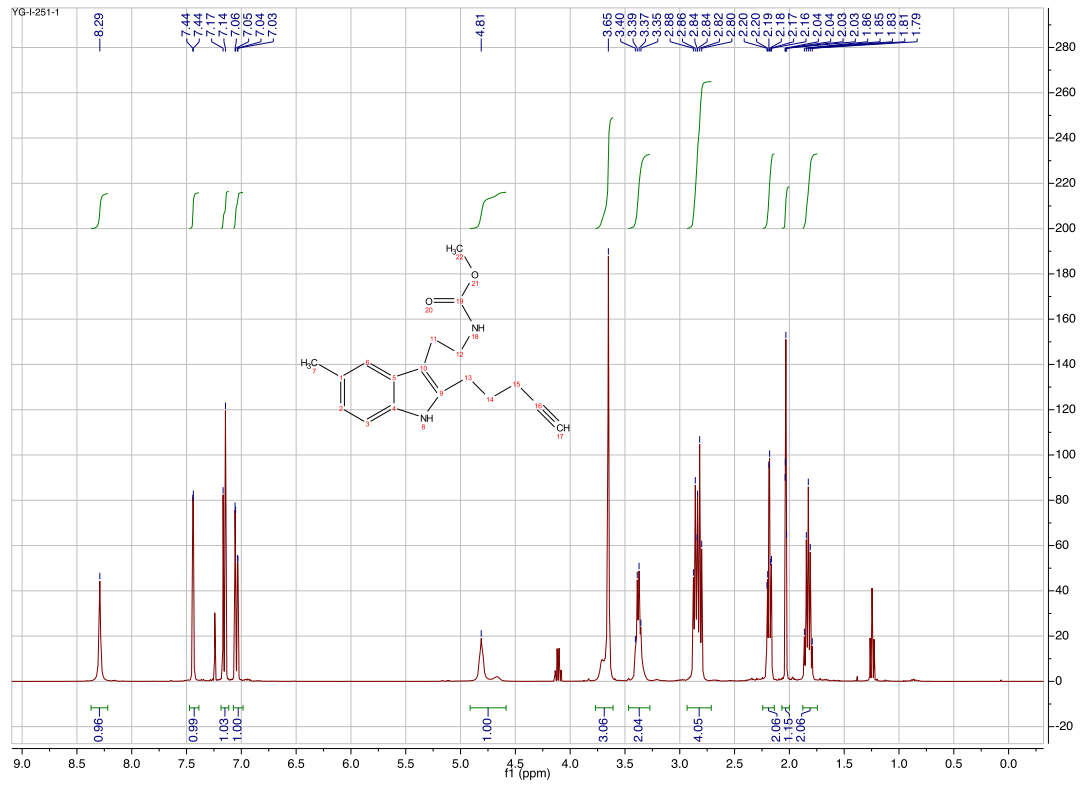
Compound 9g



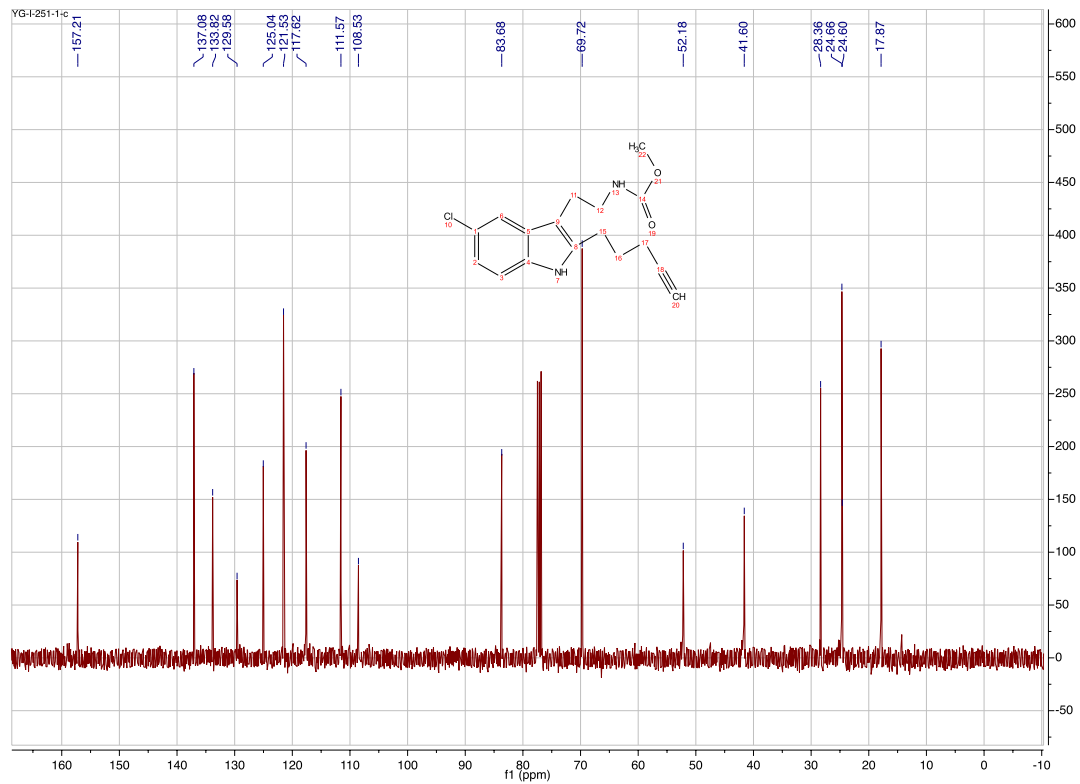
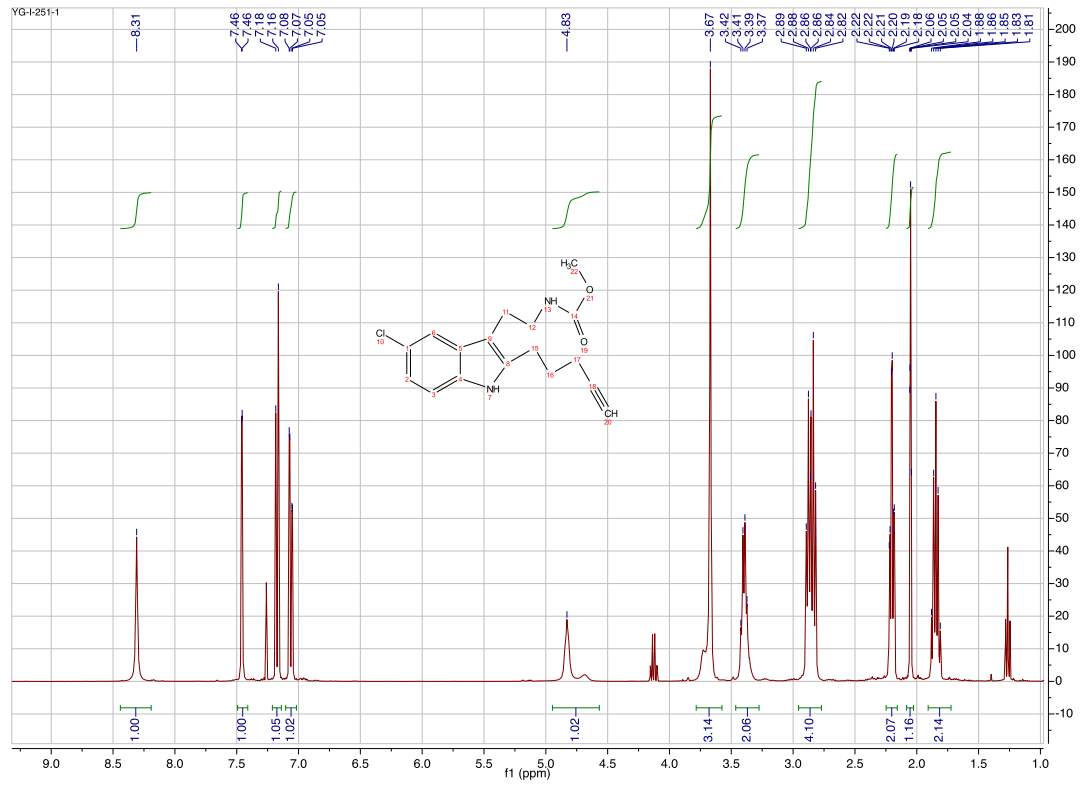
Compound 10a



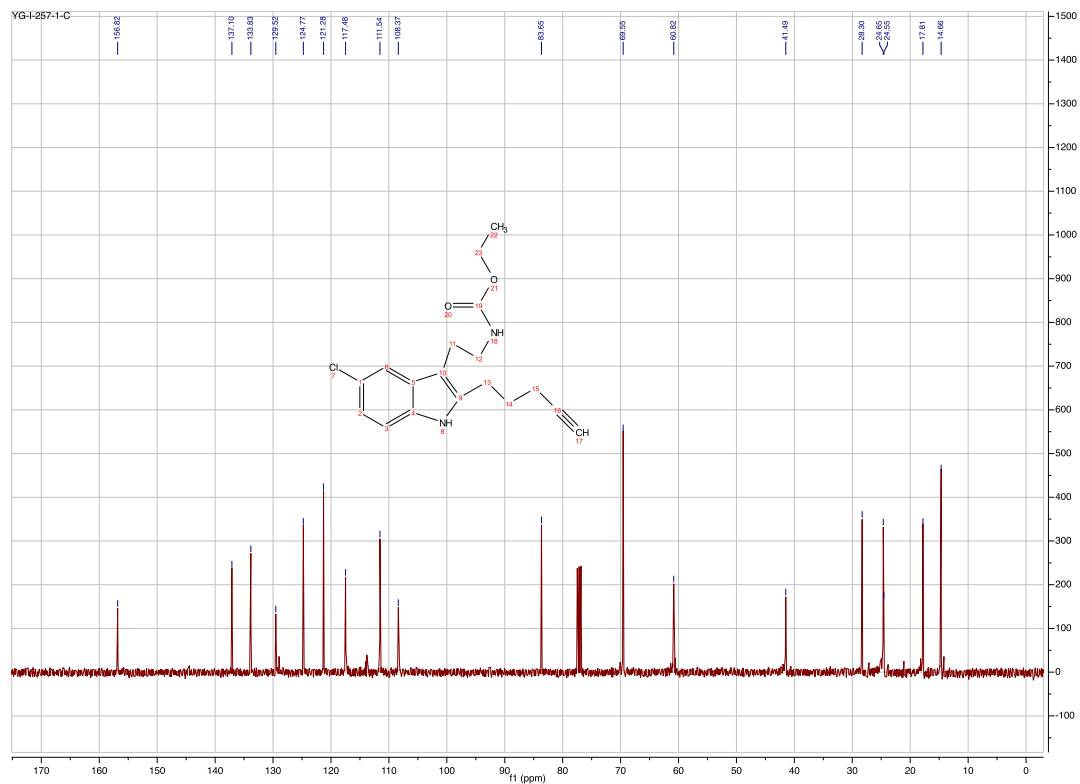
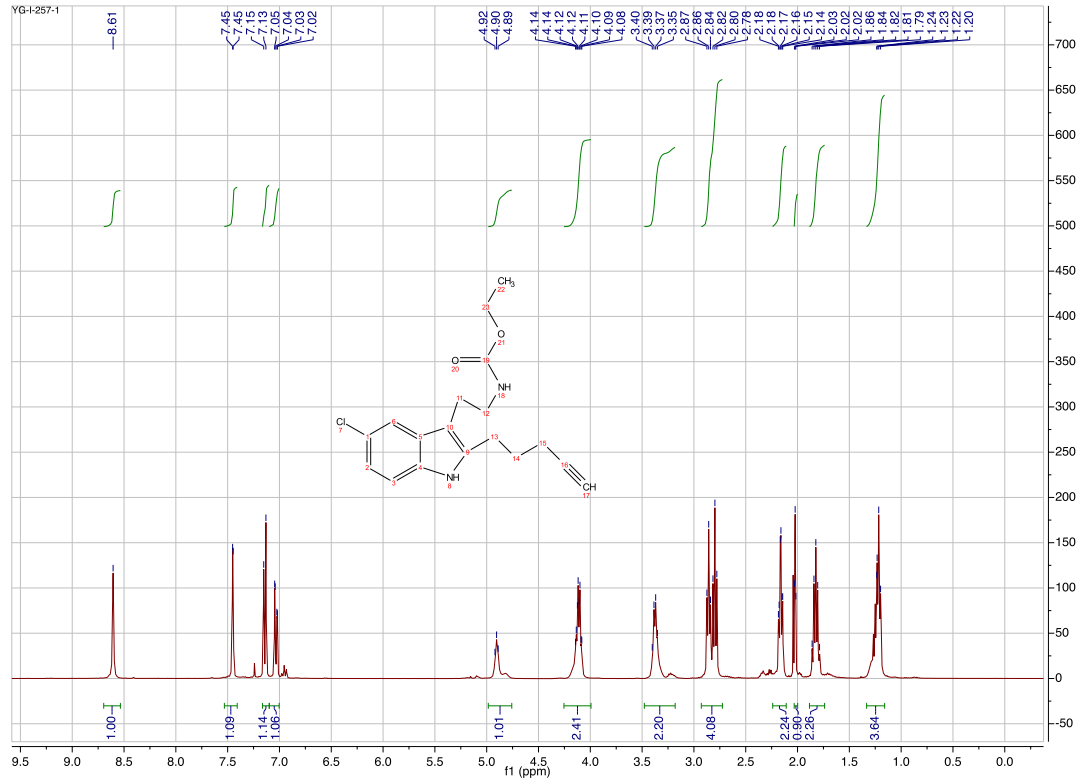
Compound 10b



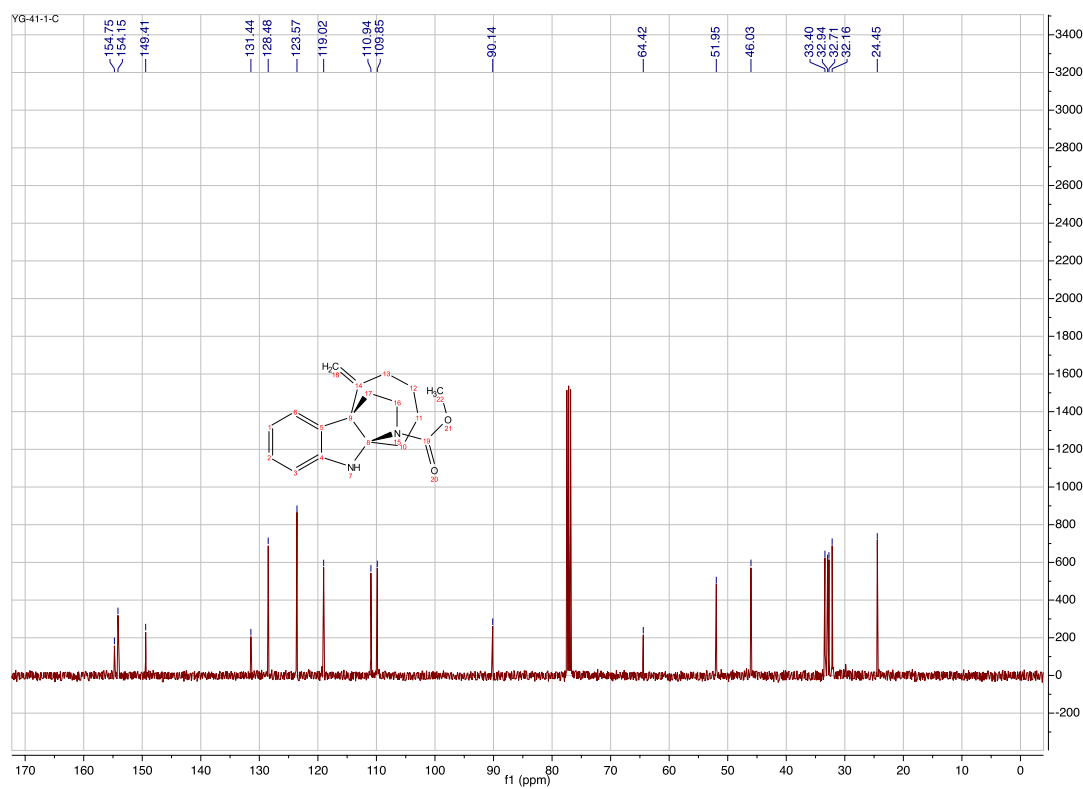
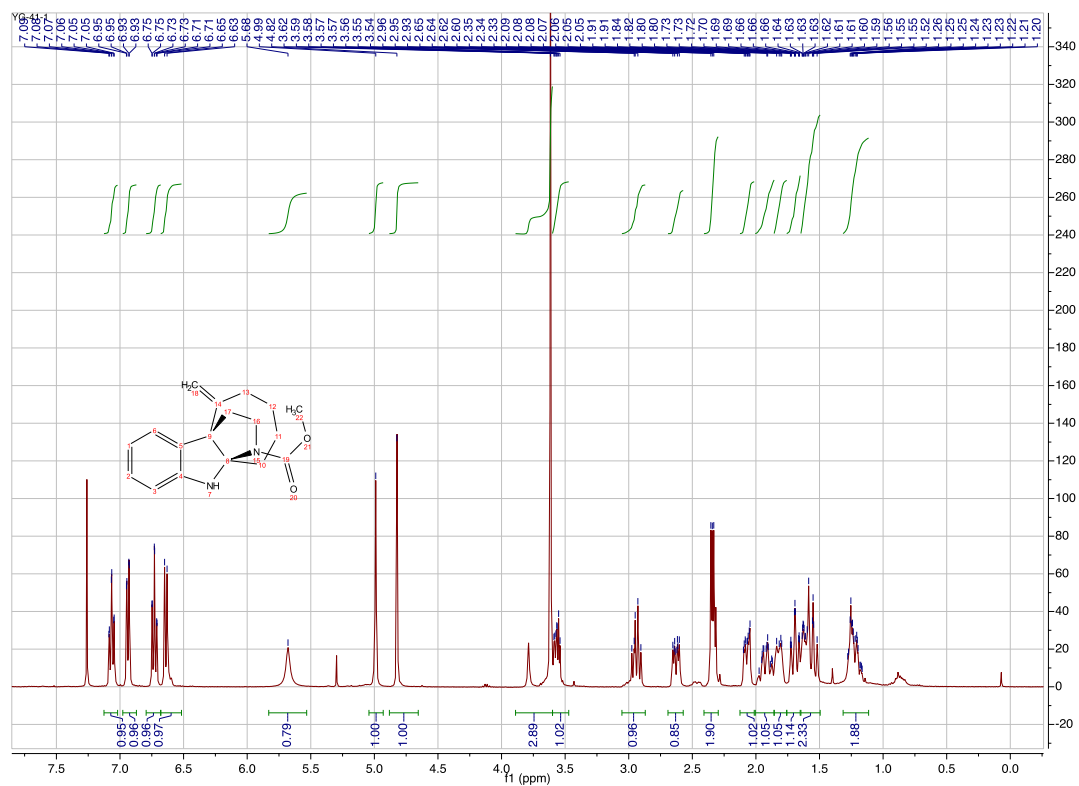
Compound 10c



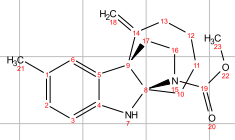
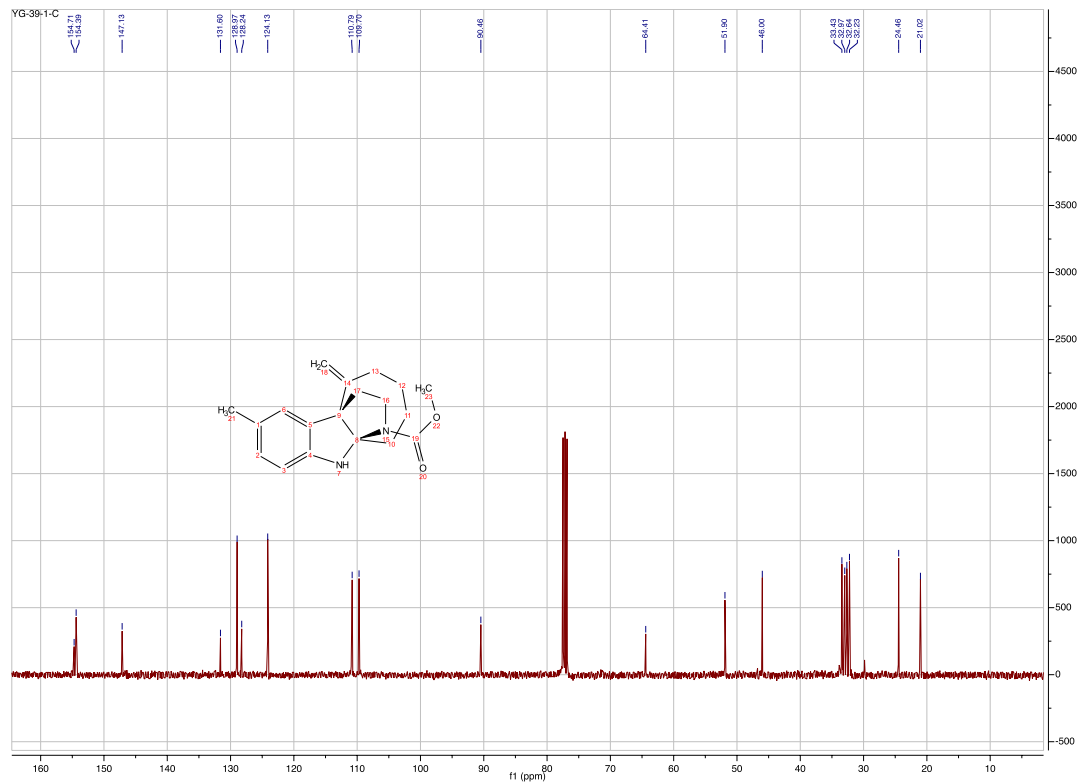
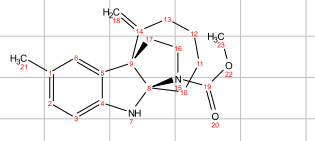
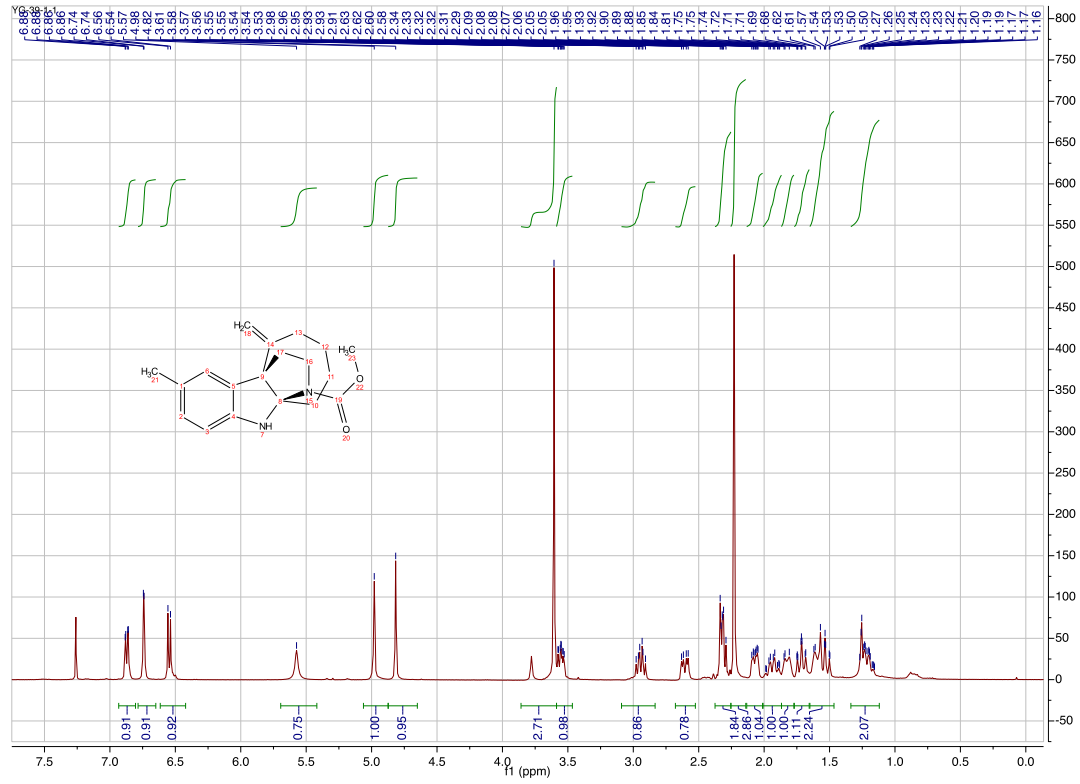
Compound 10e



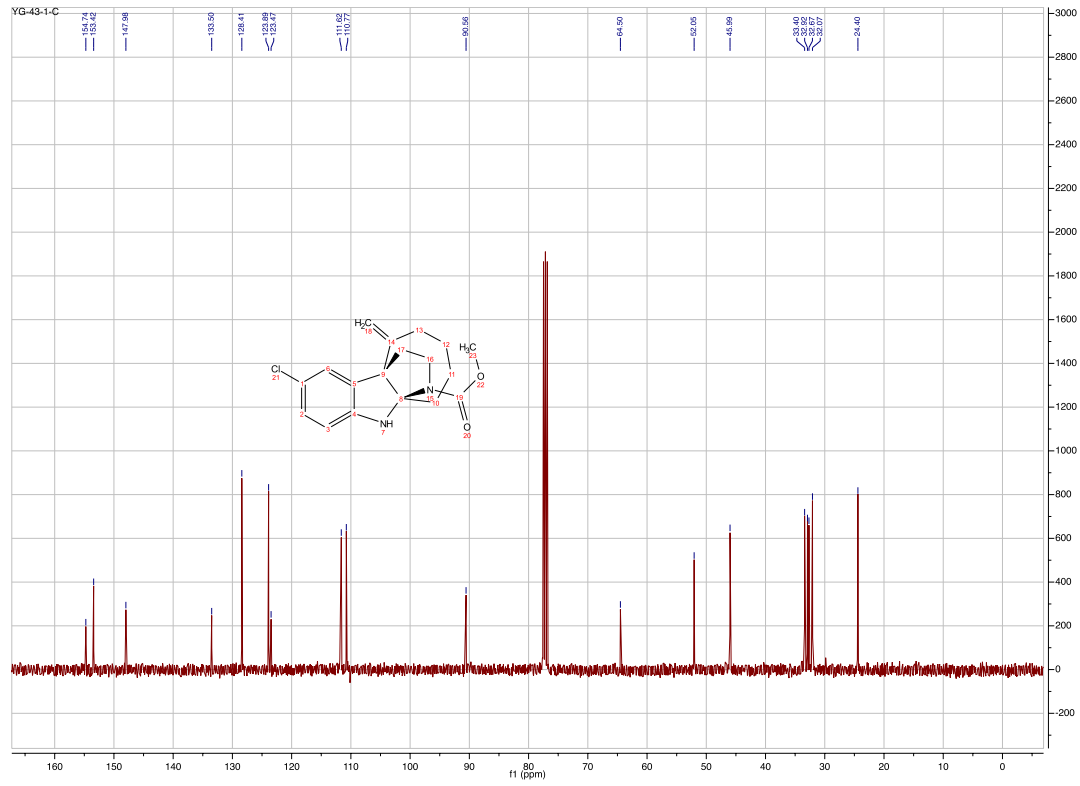
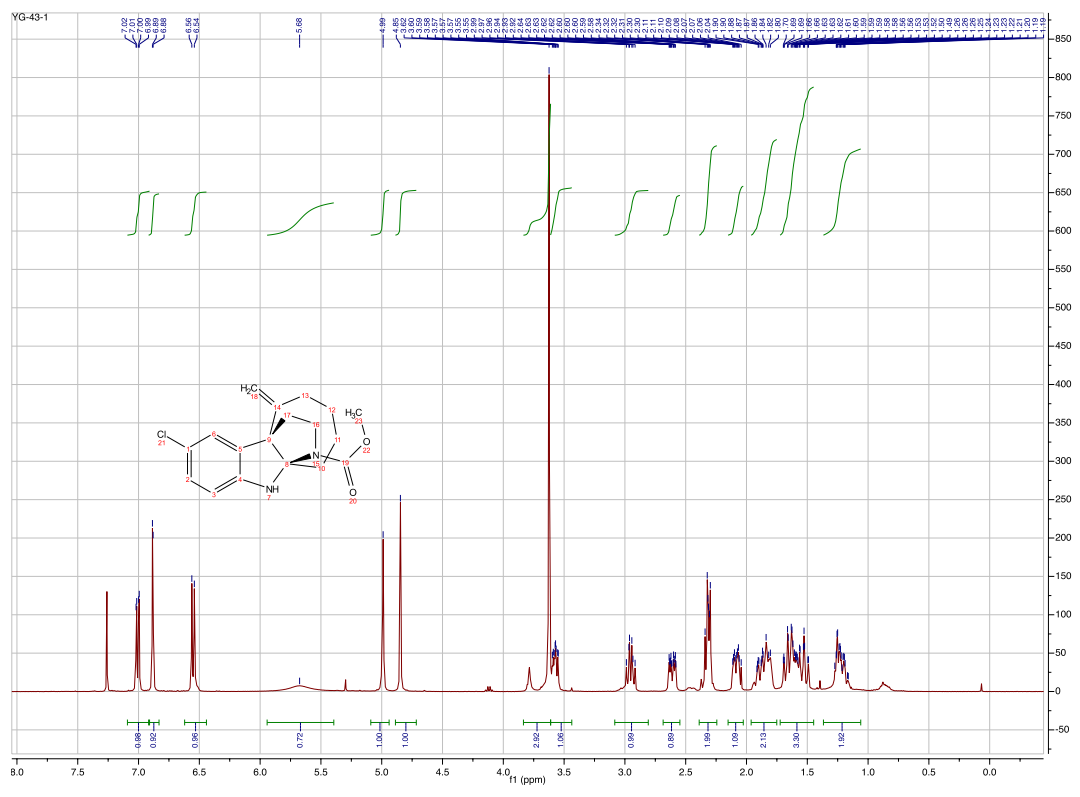
Compound 11c



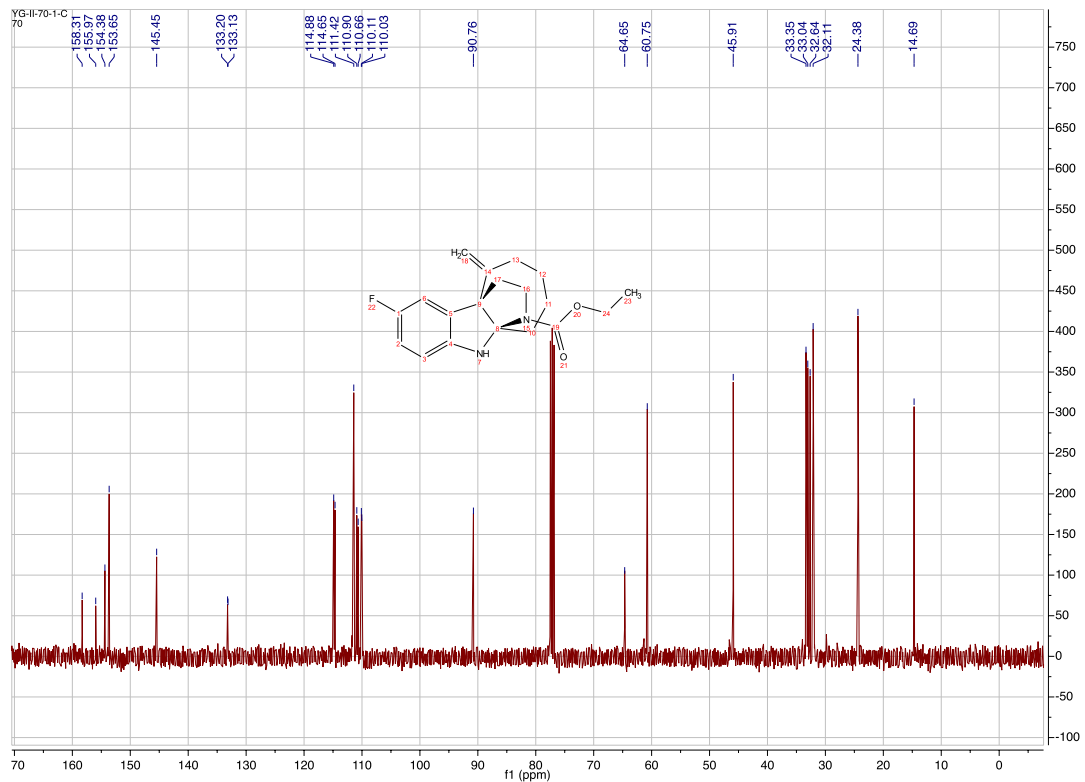
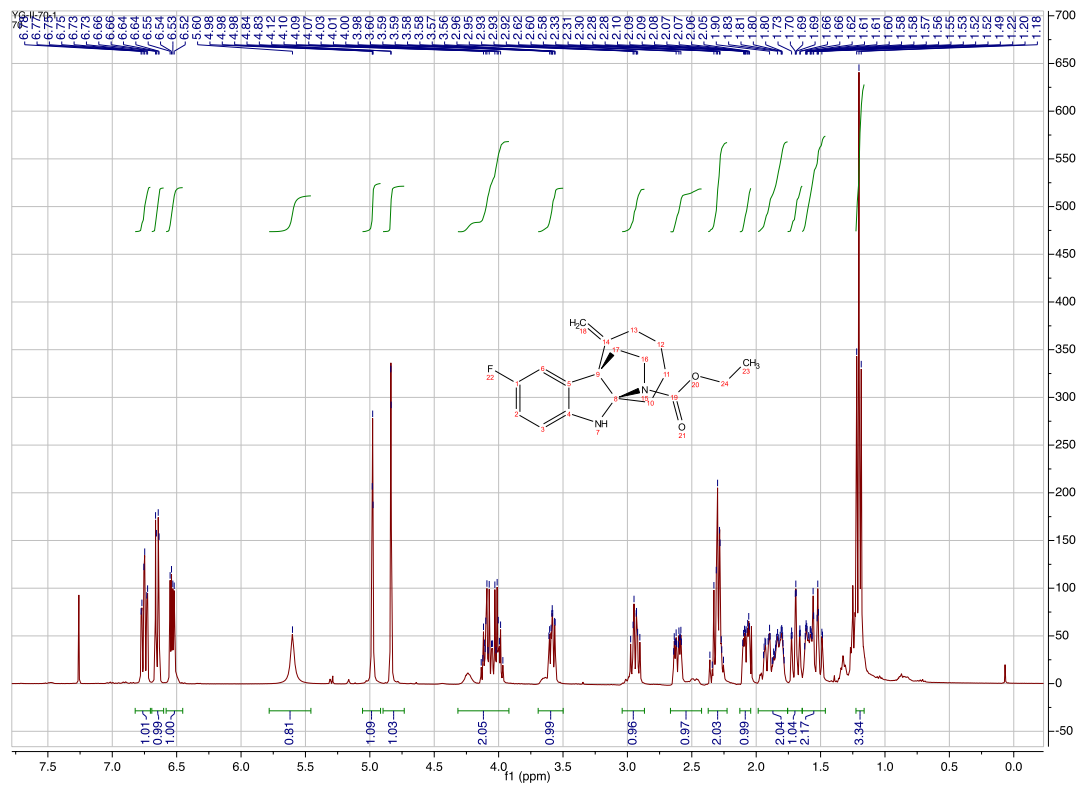
Compound 11d



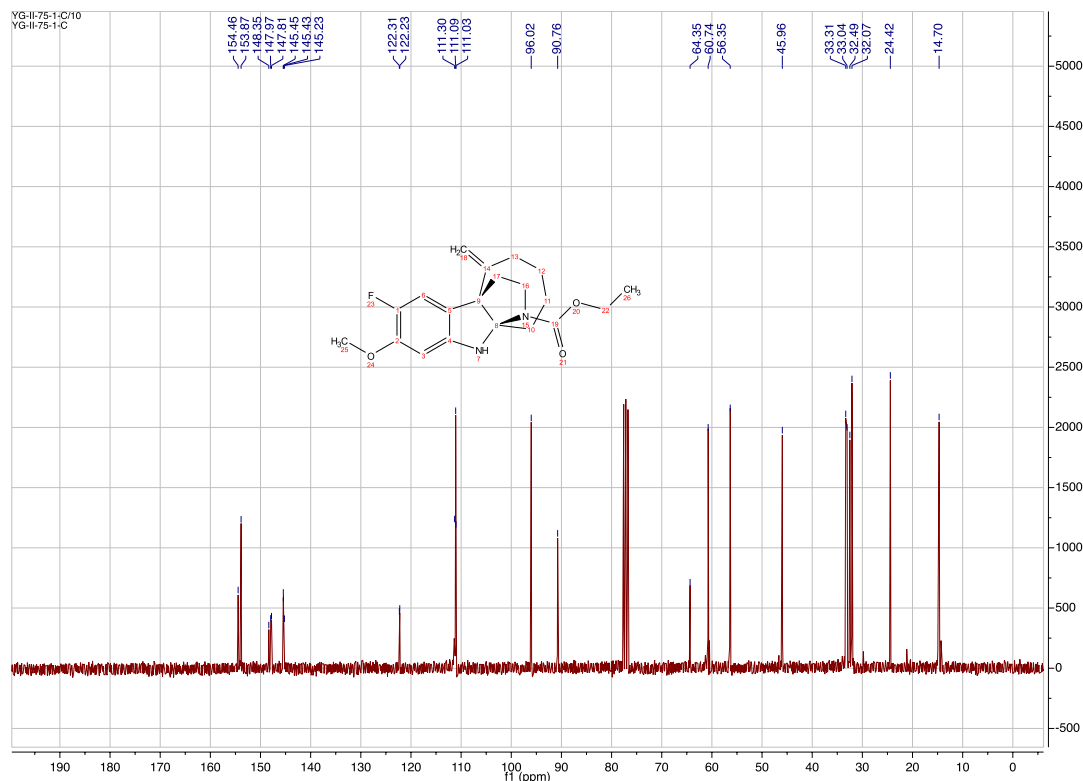
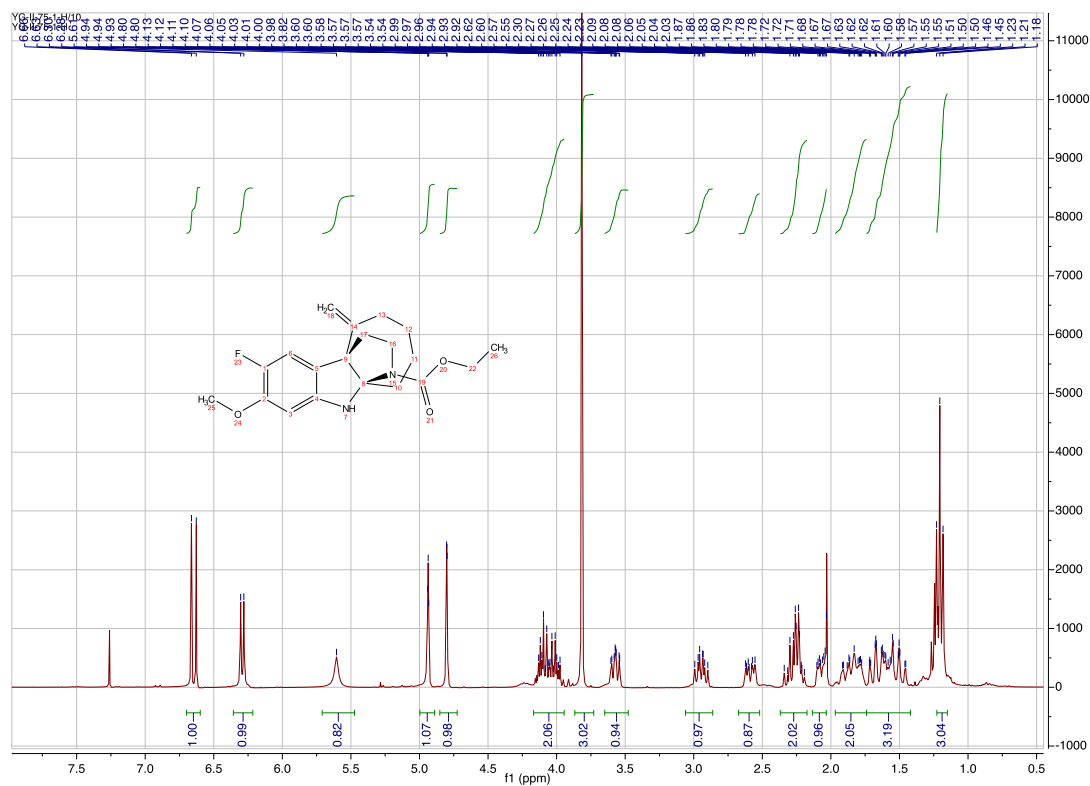
Compound 11e



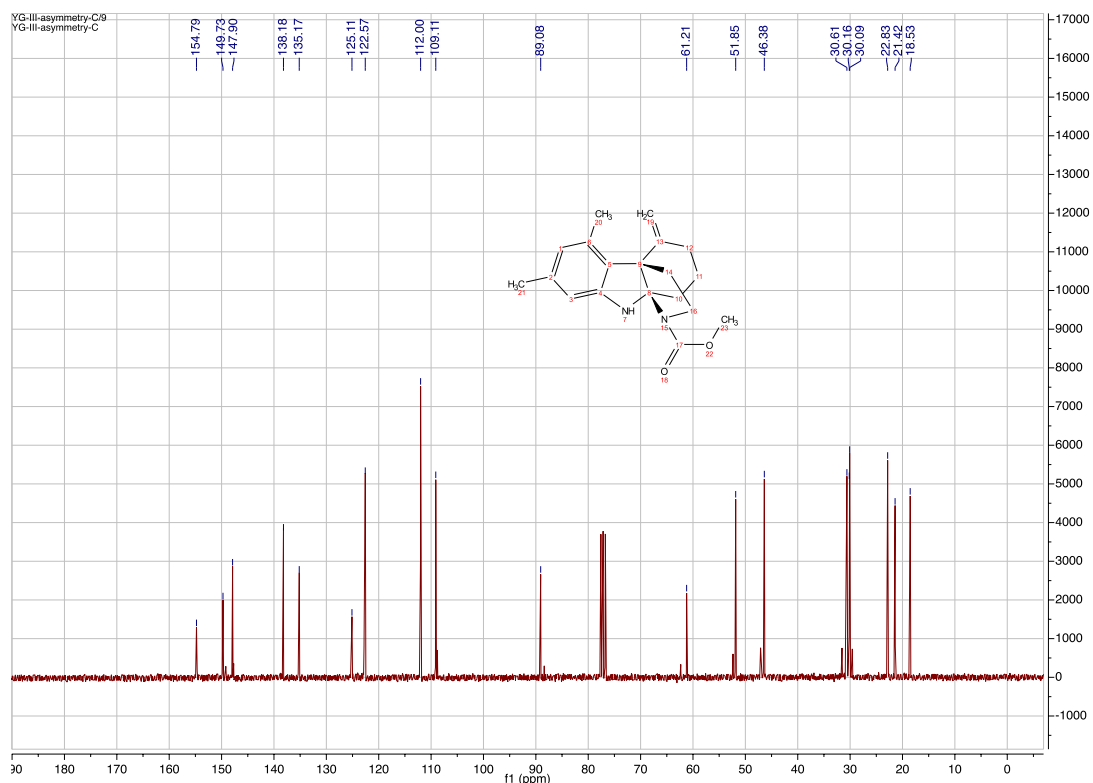
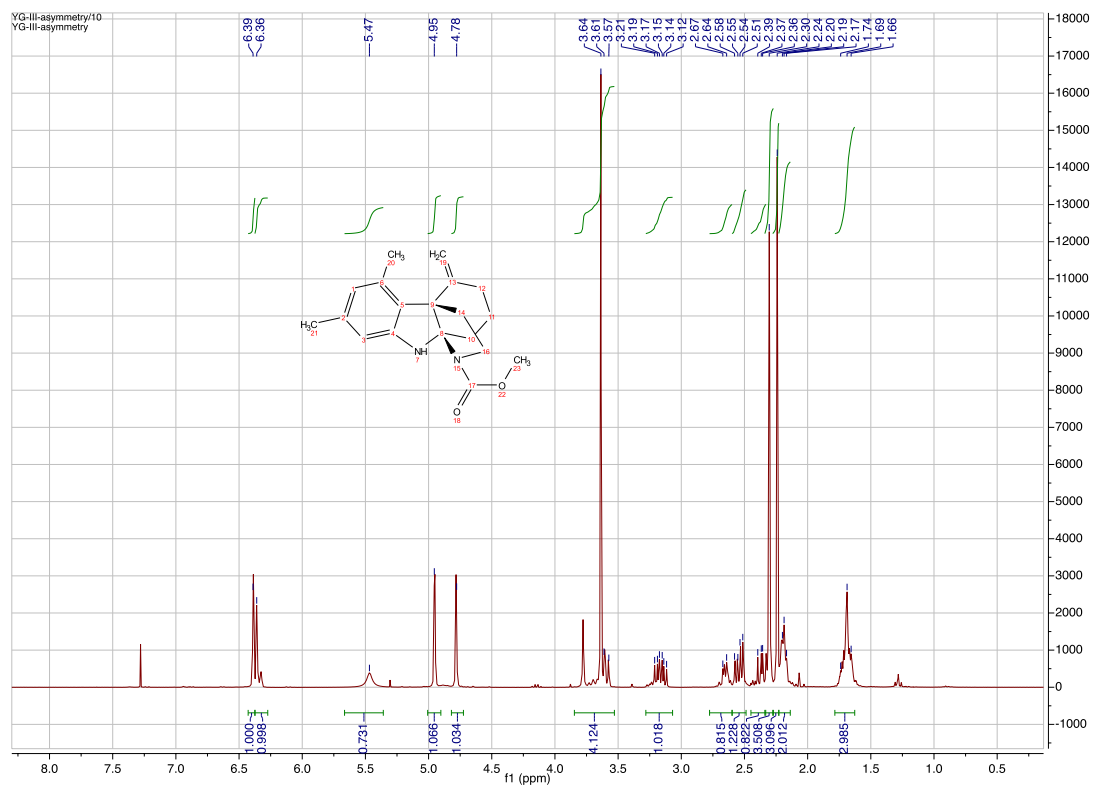
Compound **11f**



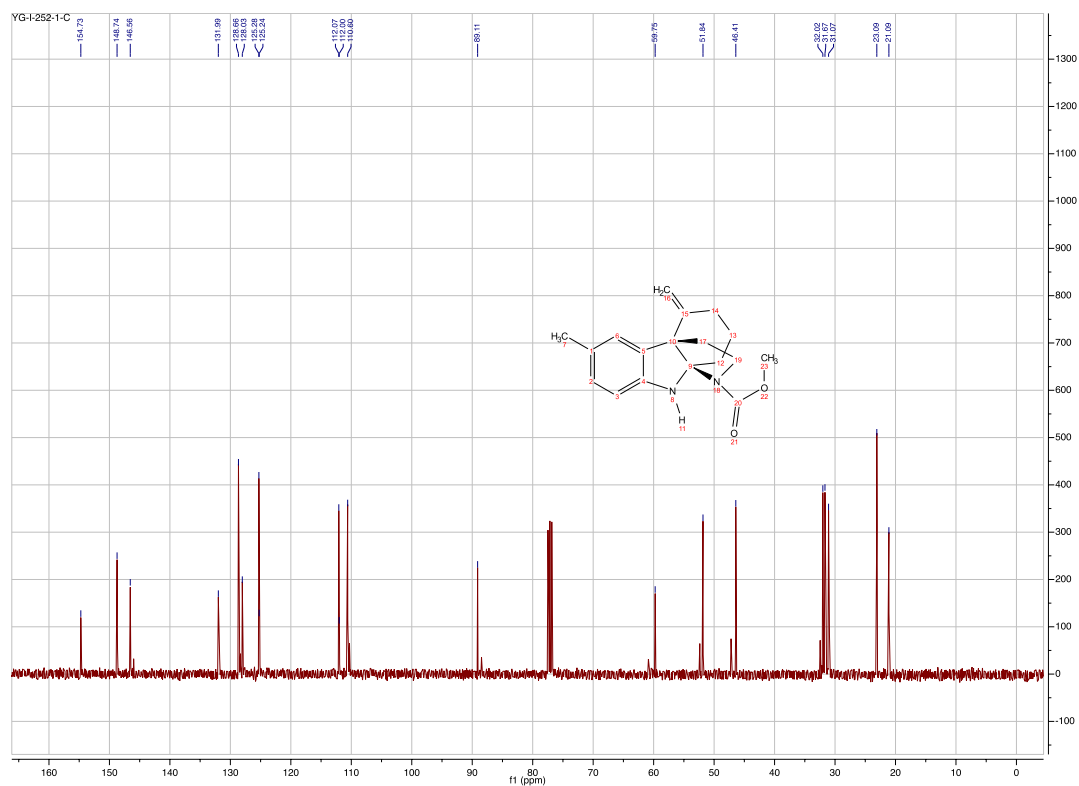
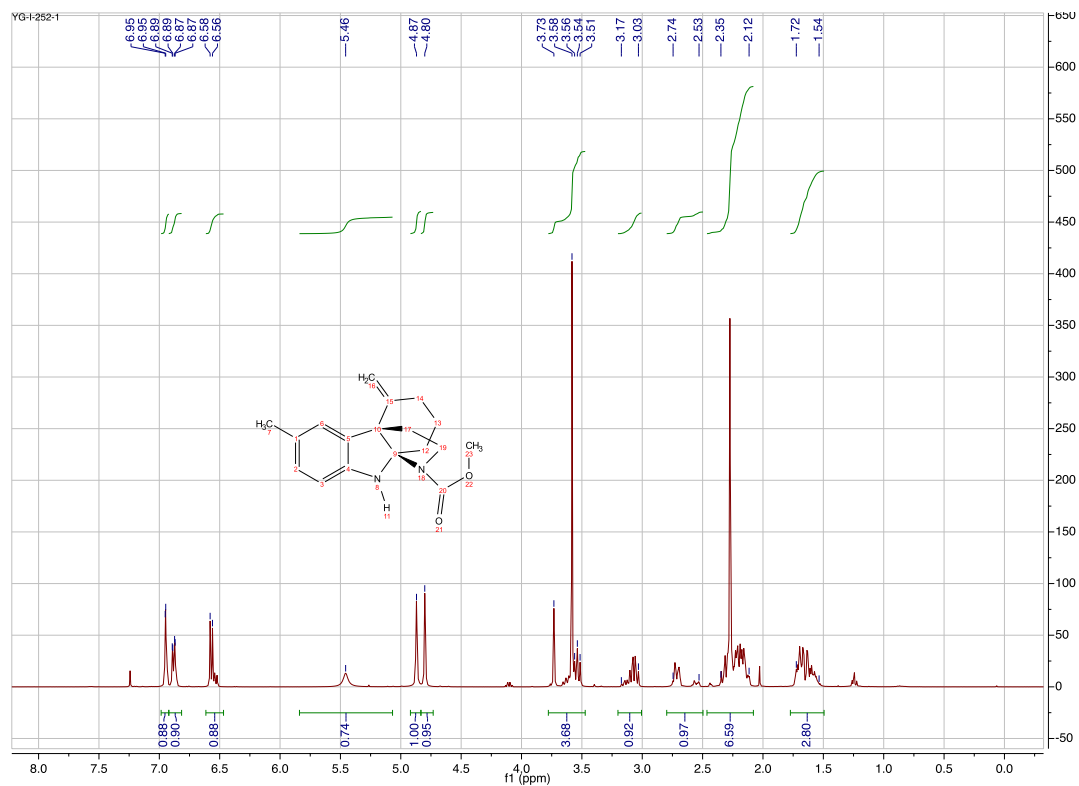
Compound 11g



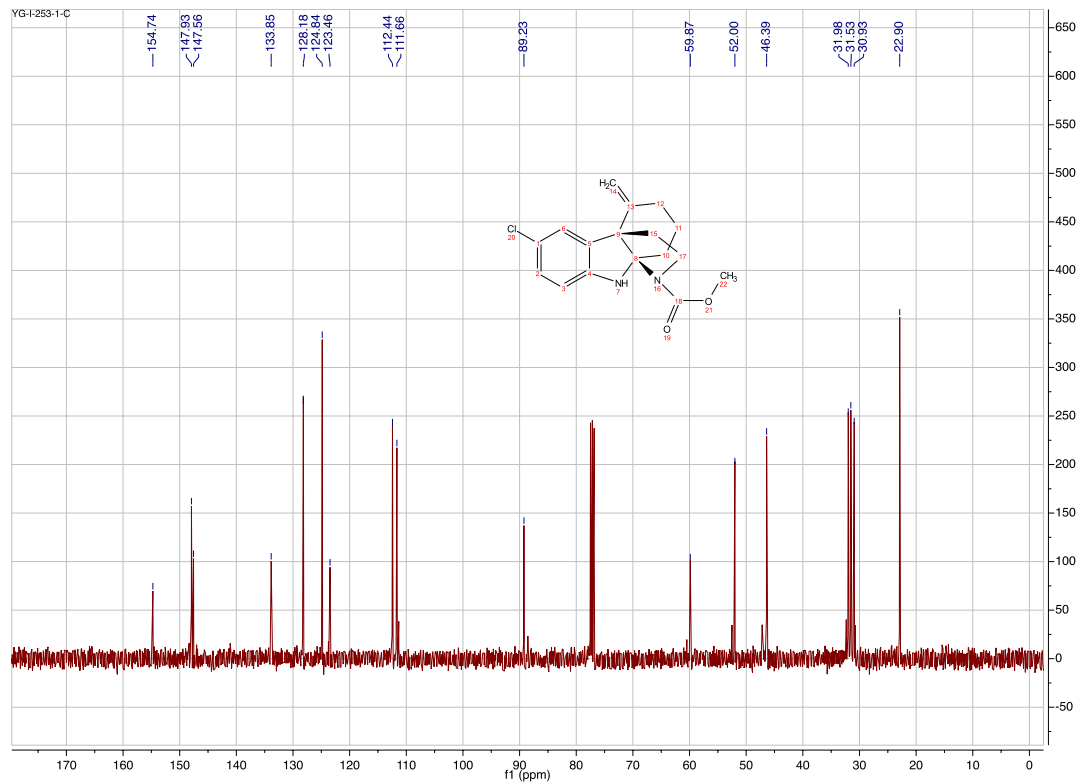
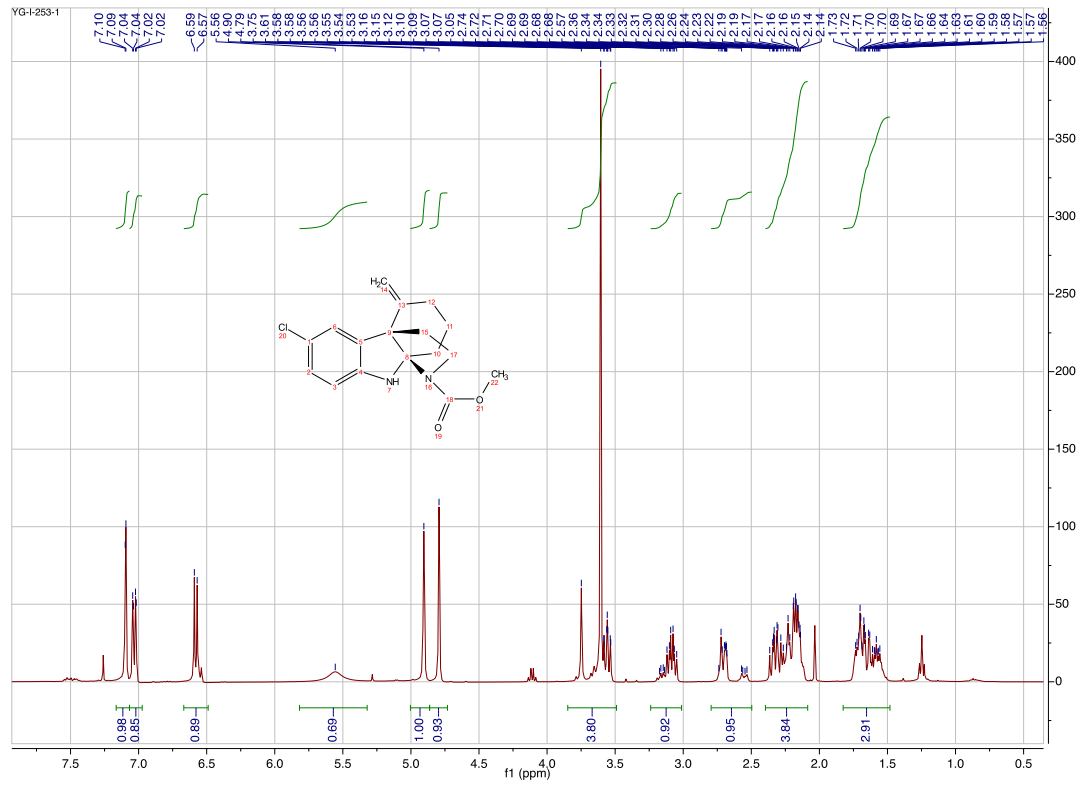
Compound 12a



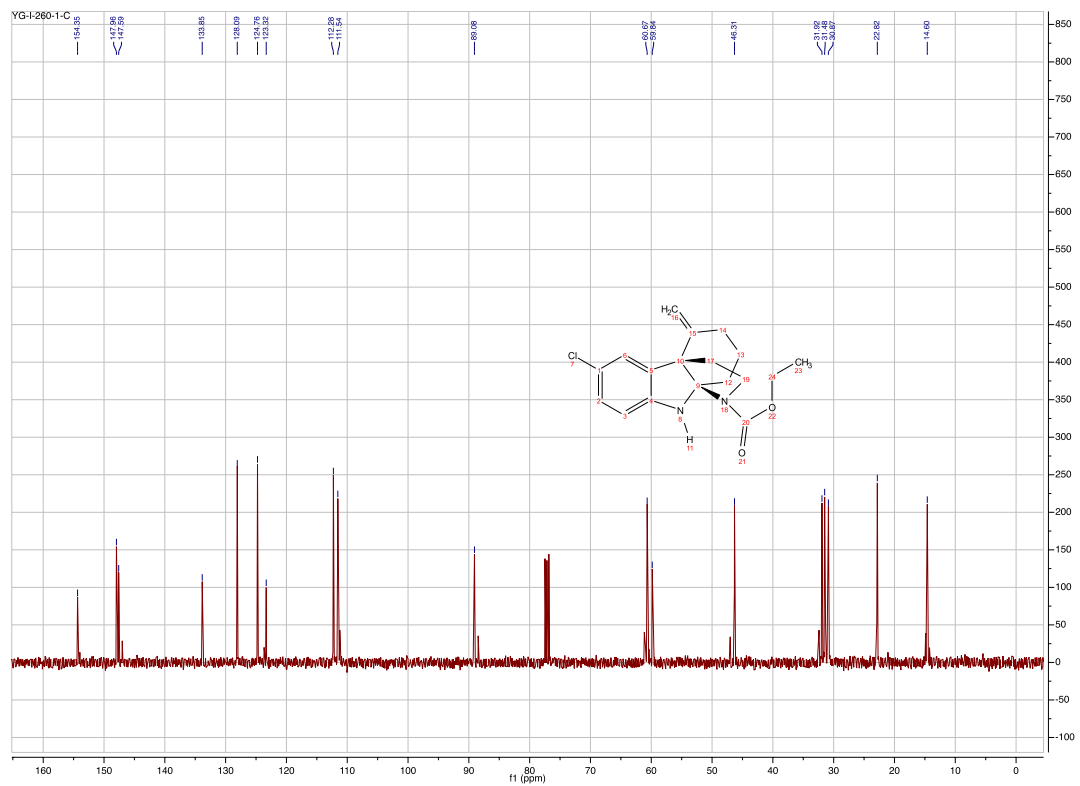
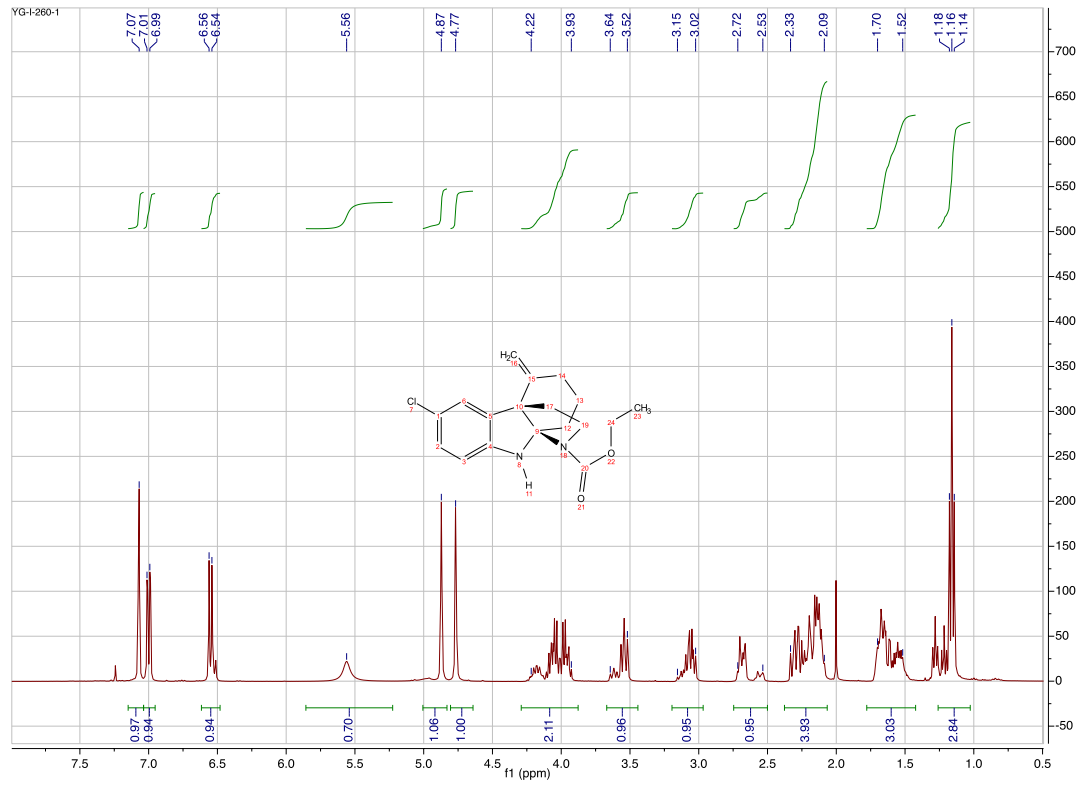
Compound 12b



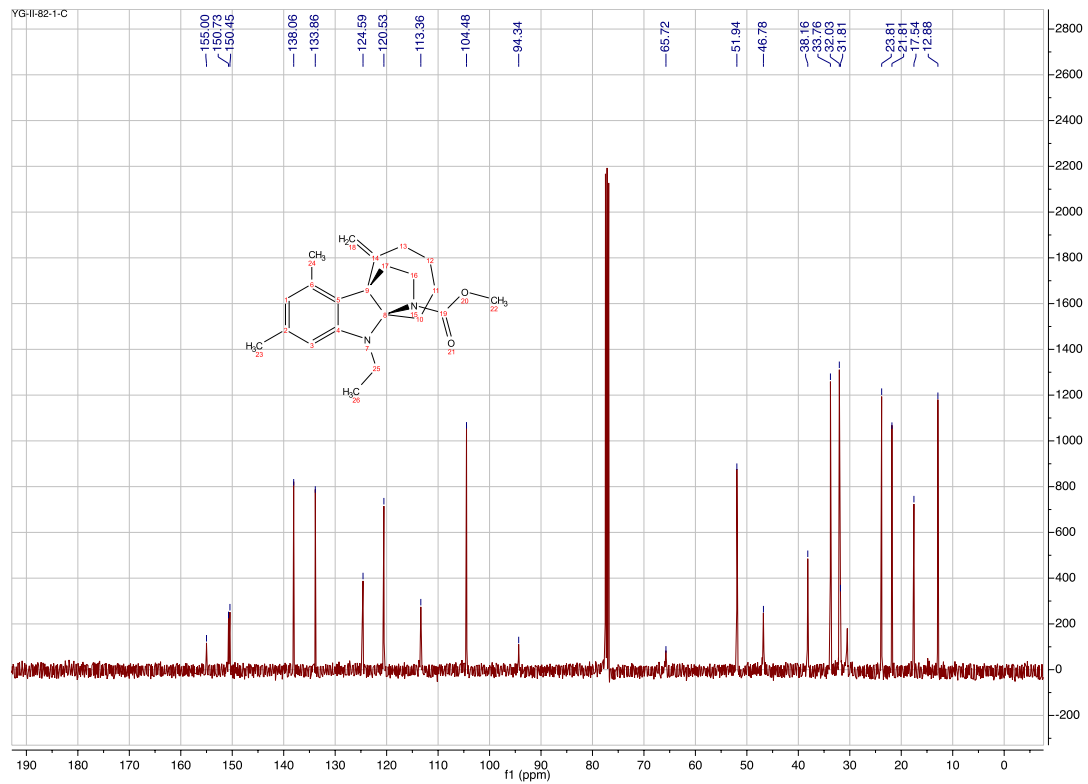
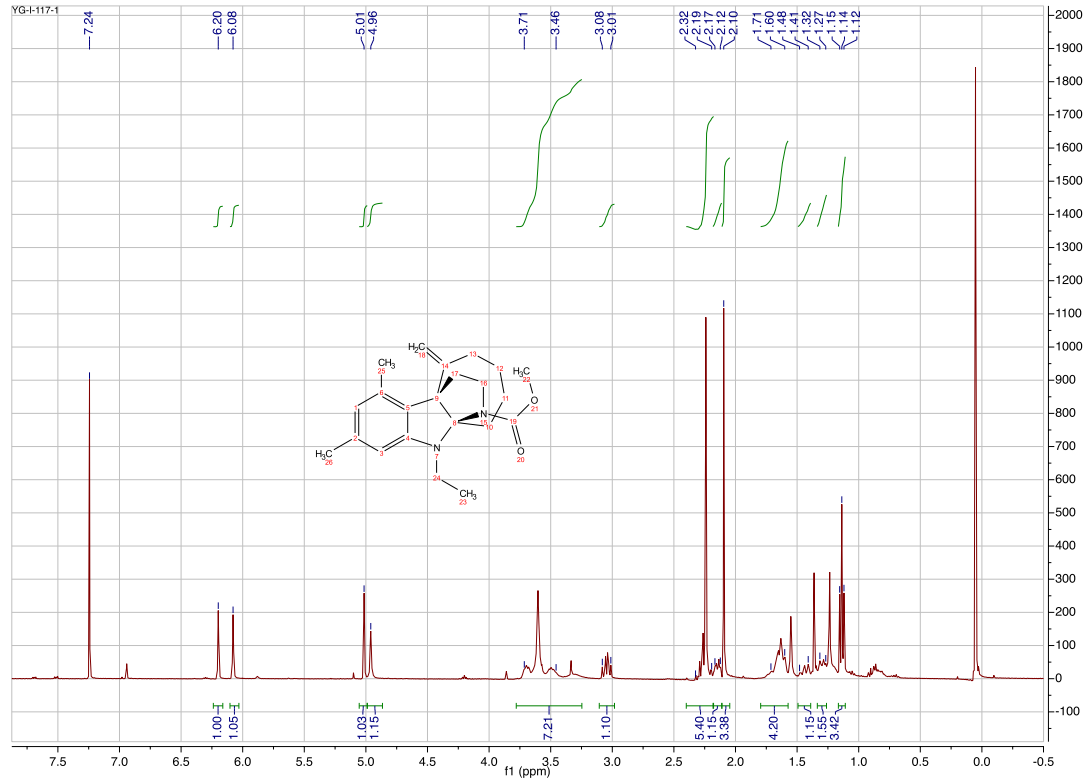
Compound 12c



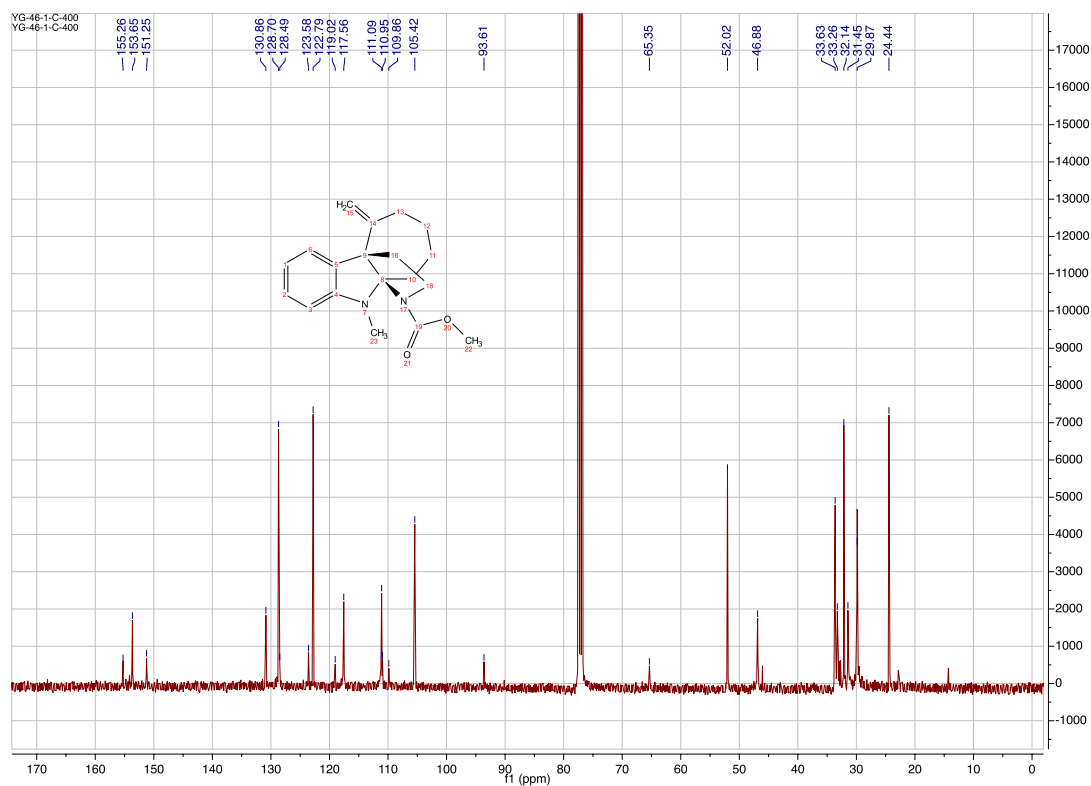
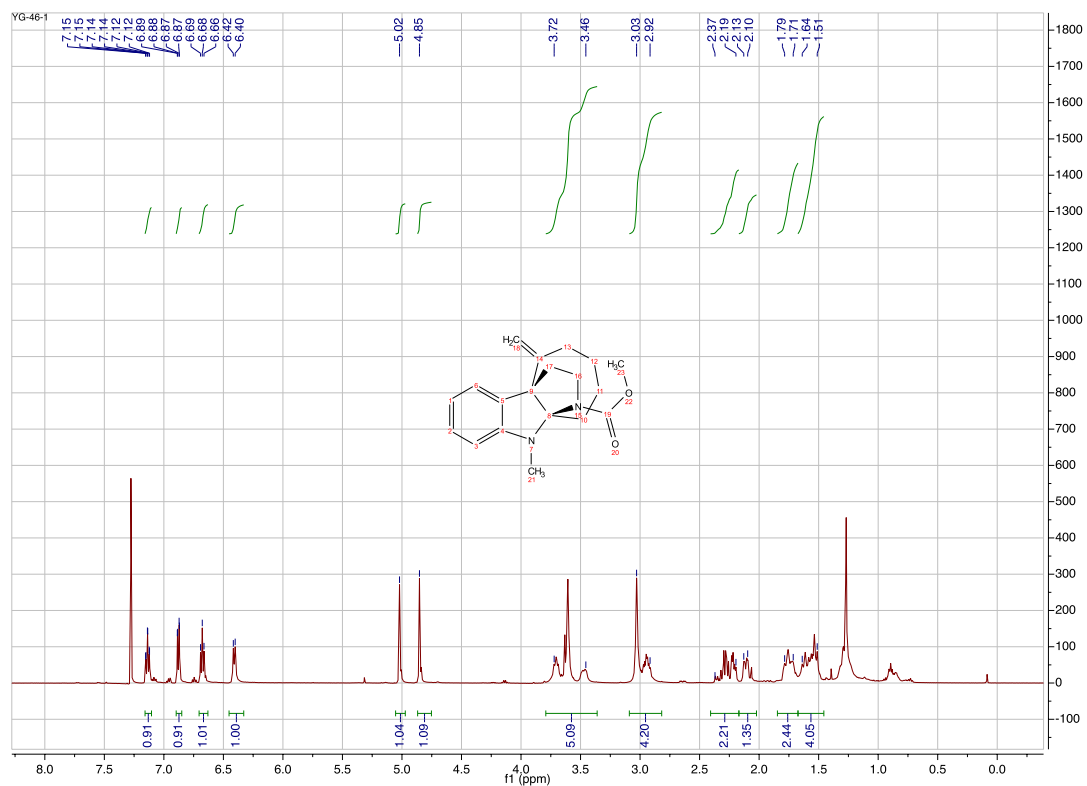
Compound 12e



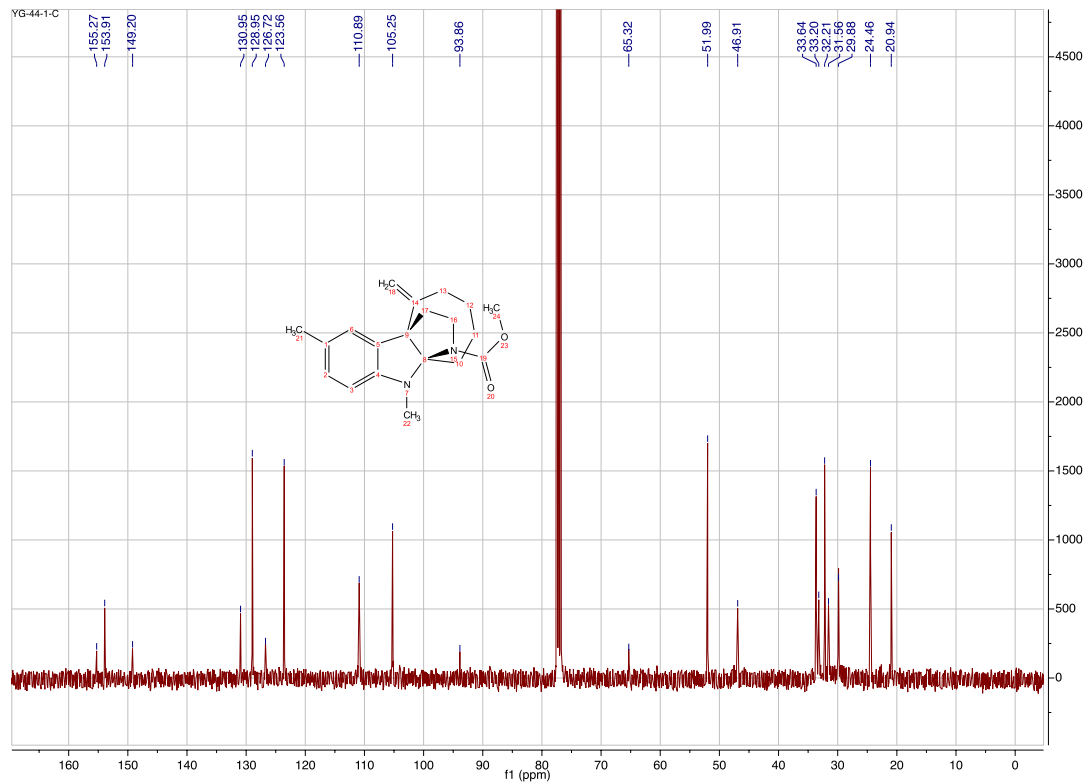
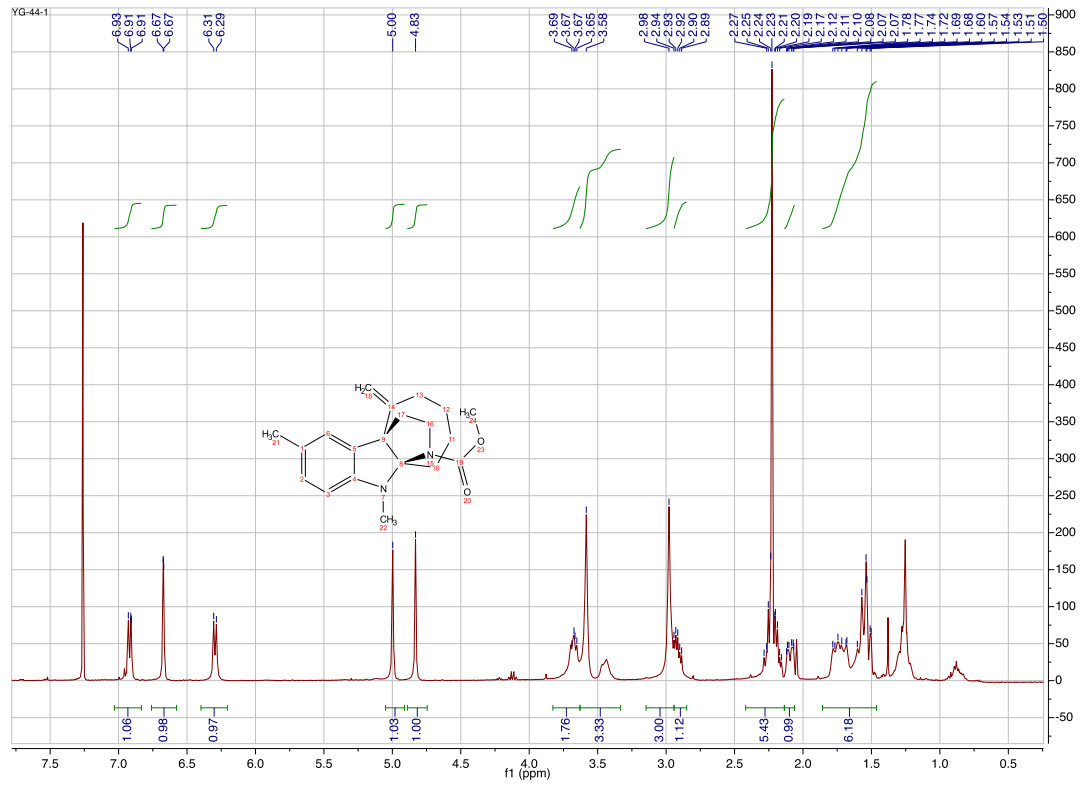
Compound 13a



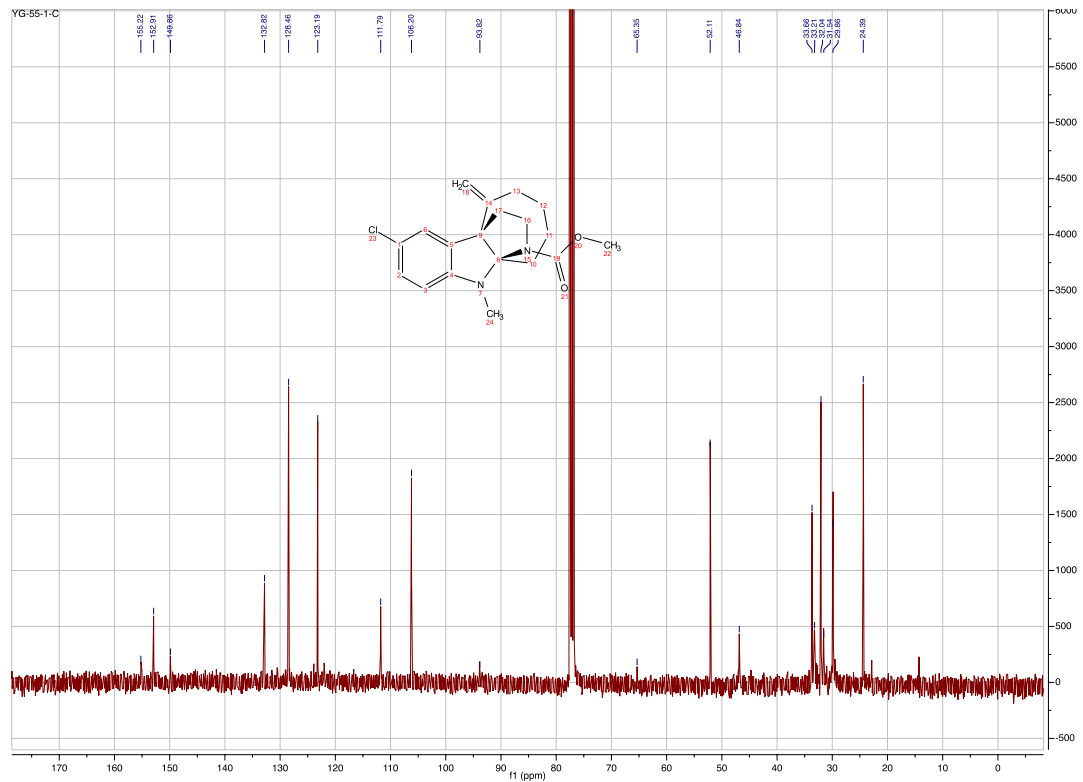
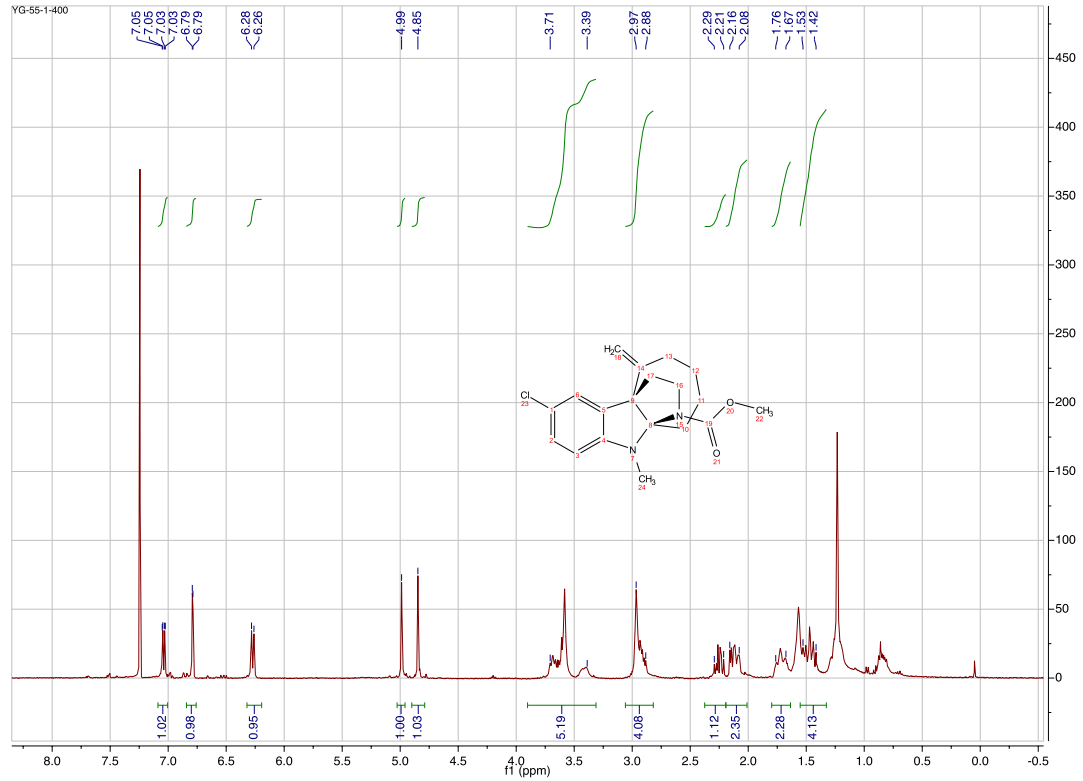
Compound 13c



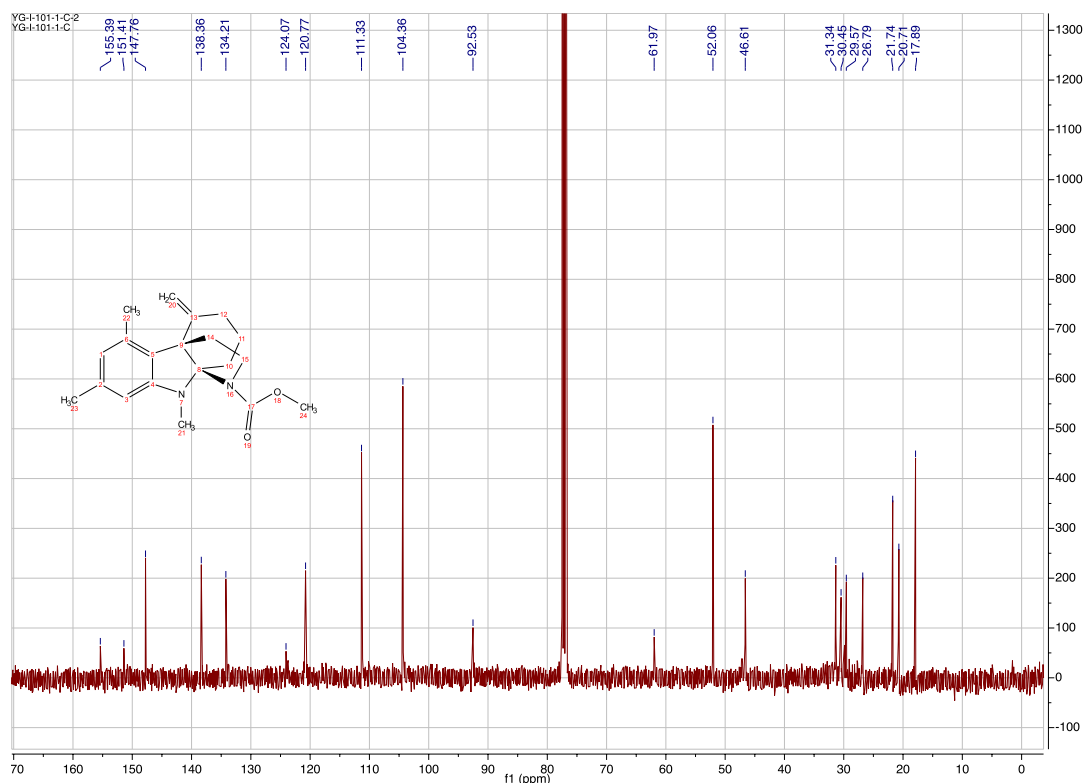
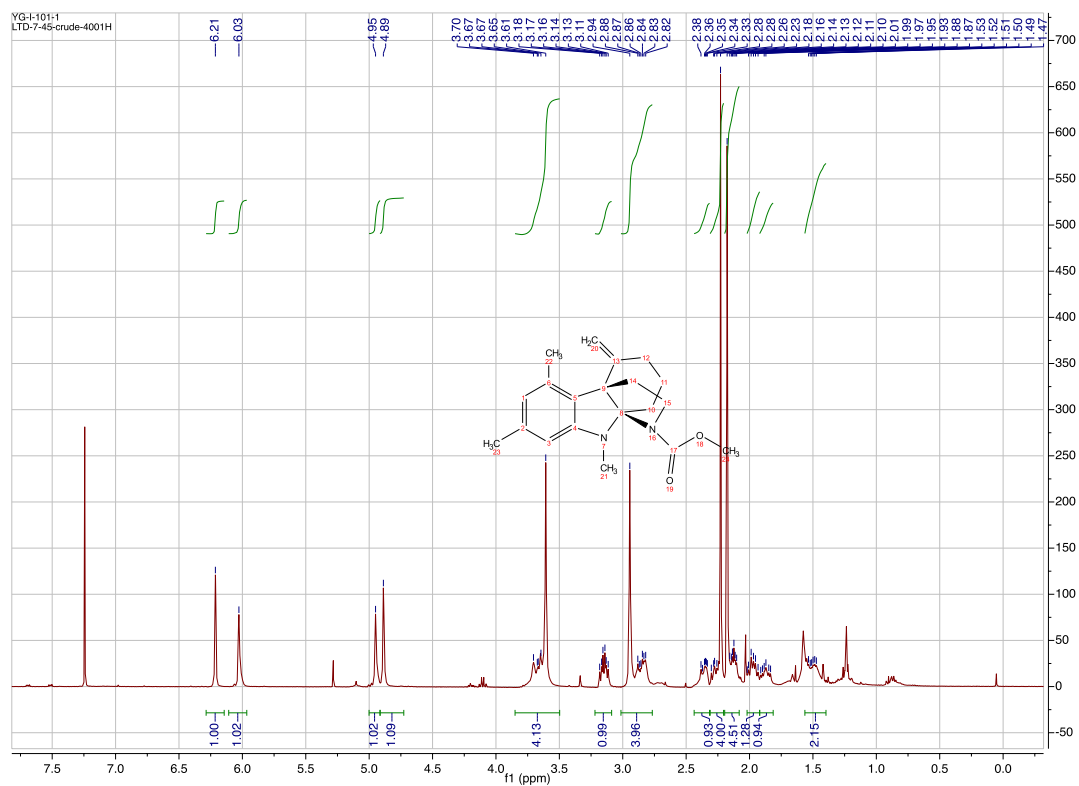
Compound 13d



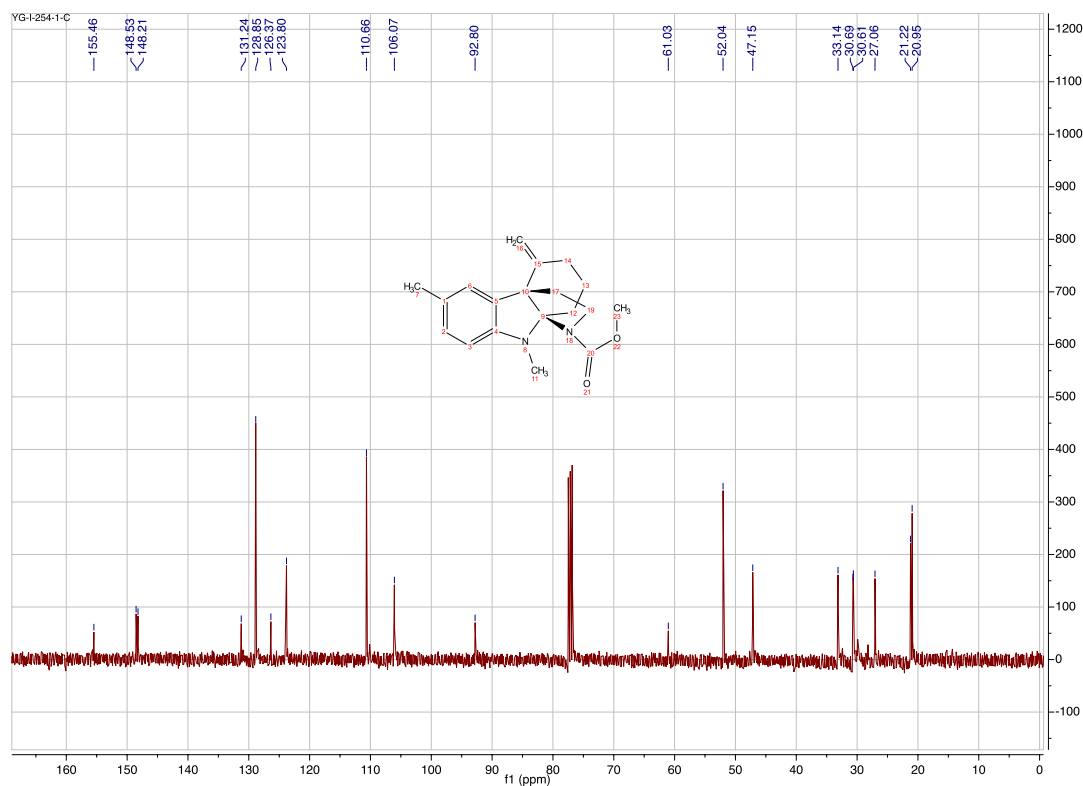
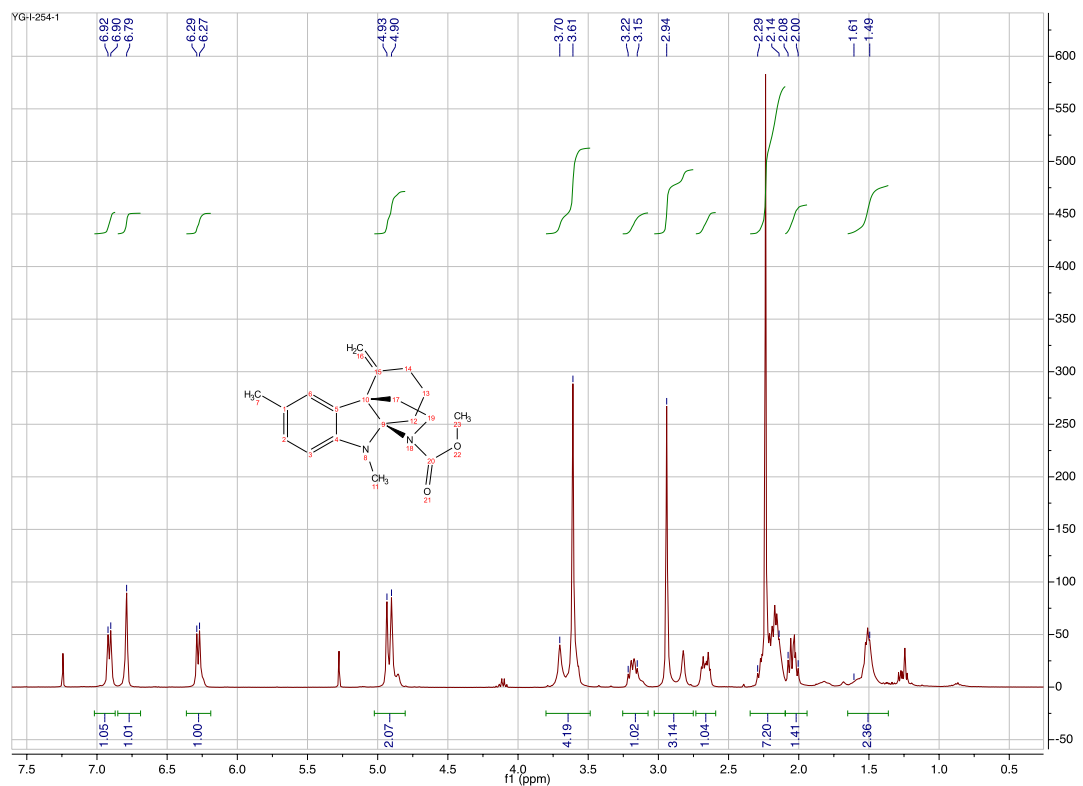
Compound 13e



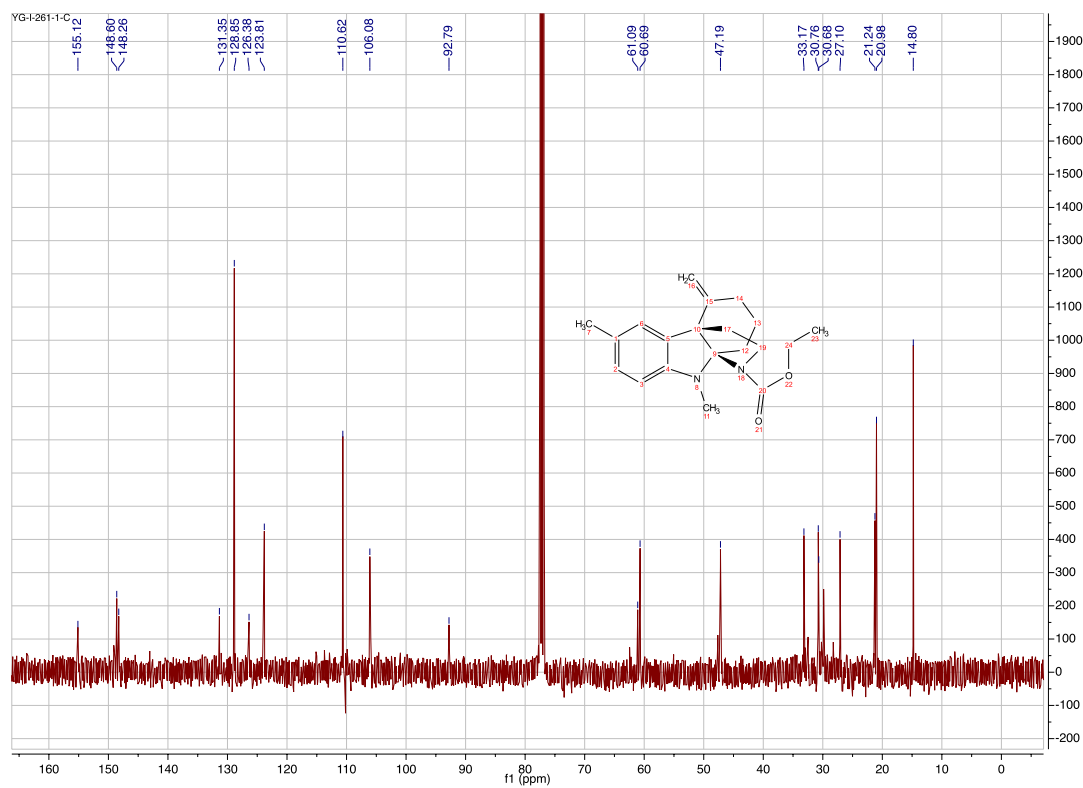
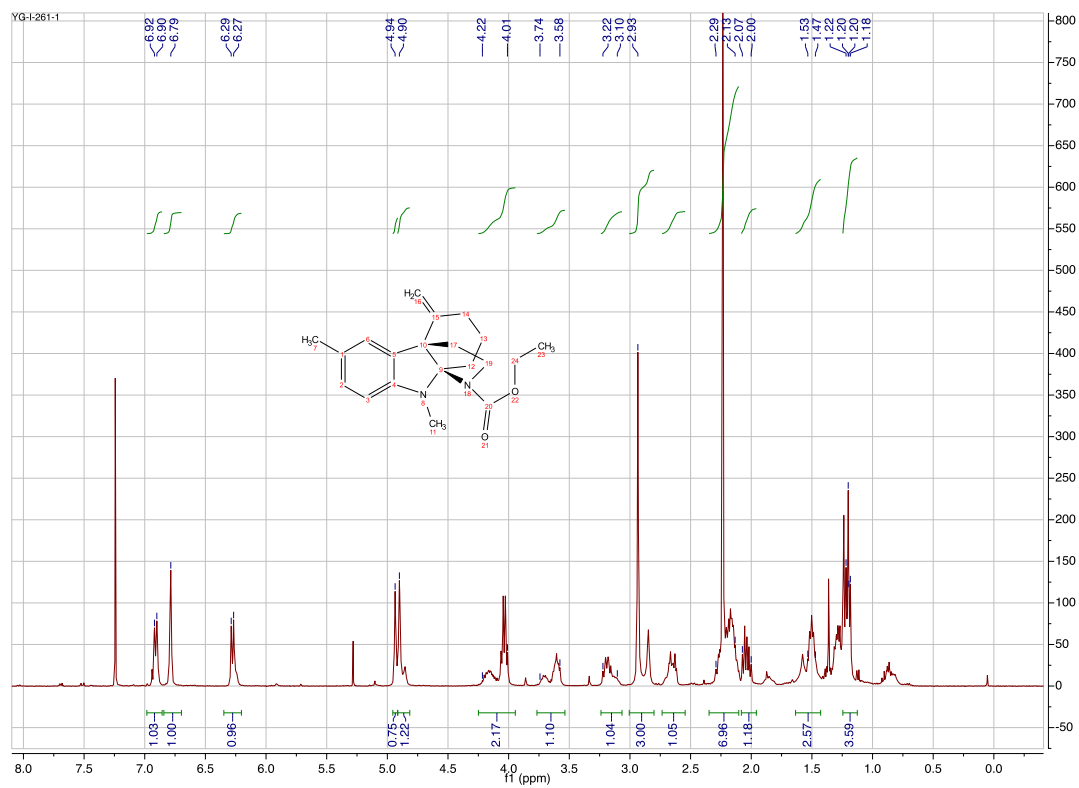
Compound 14a



Compound 14b



Compound 14d



Compound **14e**

