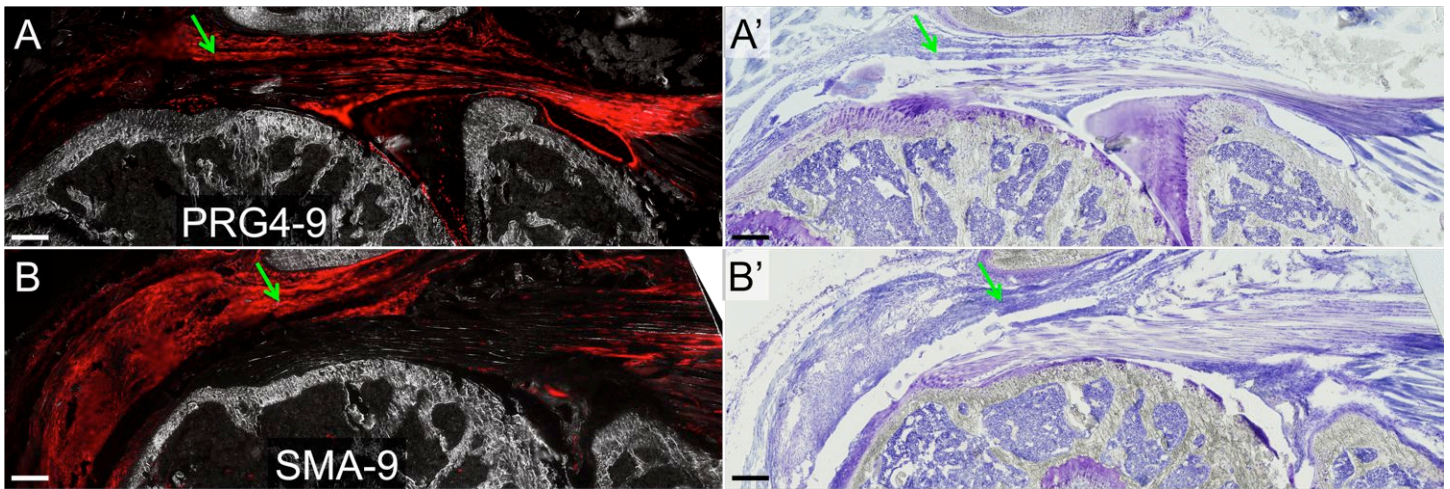


SUPPLEMENTAL INFORMATION



Supplemental Figure 1. Delivery of tamoxifen one week prior to surgery instead of on the day of surgery did not alter the contribution of PRG4-9+ and SMA-9+ cells to the healing tissue. Tamoxifen delivered in oil via IP injection can result in activation of Cre within cells several days after delivery, which may lead to labeling of cells that turn on these genes in response to the injury. Therefore, PRG4-9 (A) and SMA-9 (B) mice were injected with tamoxifen (80 $\mu\text{g/g}$ in corn oil) one week prior to injury. Similar to mice injected on the day of surgery, both PRG4-9+ and SMA-9+ cells contributed to the healing tissue (green arrows). Scale bars = 200 μm .