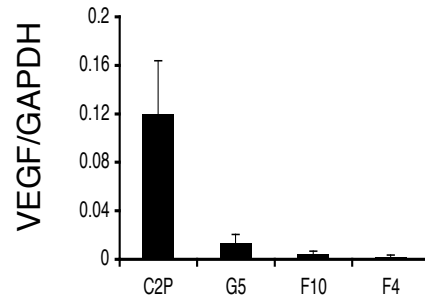
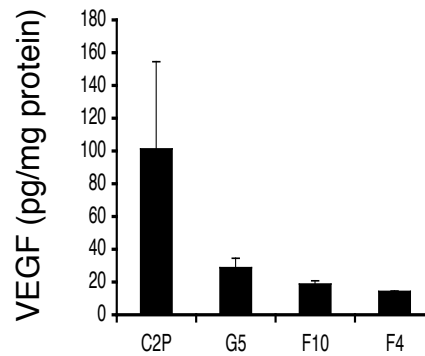


**A**



**B**



**Supplementary Fig.1.** Detection of VEGF expression in tumors generated from *VEGF*<sup>-/-</sup> MEF cells (G5, F10 and F4).

(A) Detection of VEGF RNA in tumors by quantitative RT-PCR using primer/probe sets specific for VEGF exon3. VEGF expression levels were standardized to GAPDH expression in each tumor sample.

(B) Detection of VEGF protein in tumors by ELISA. The expression levels were normalized to the total protein level in tumor extracts.