

Appendix 1: Tables

**Average Annual Crude Incidence Rates of Chlamydia in Nunavut by Age and Sex, 2007 to 2014**

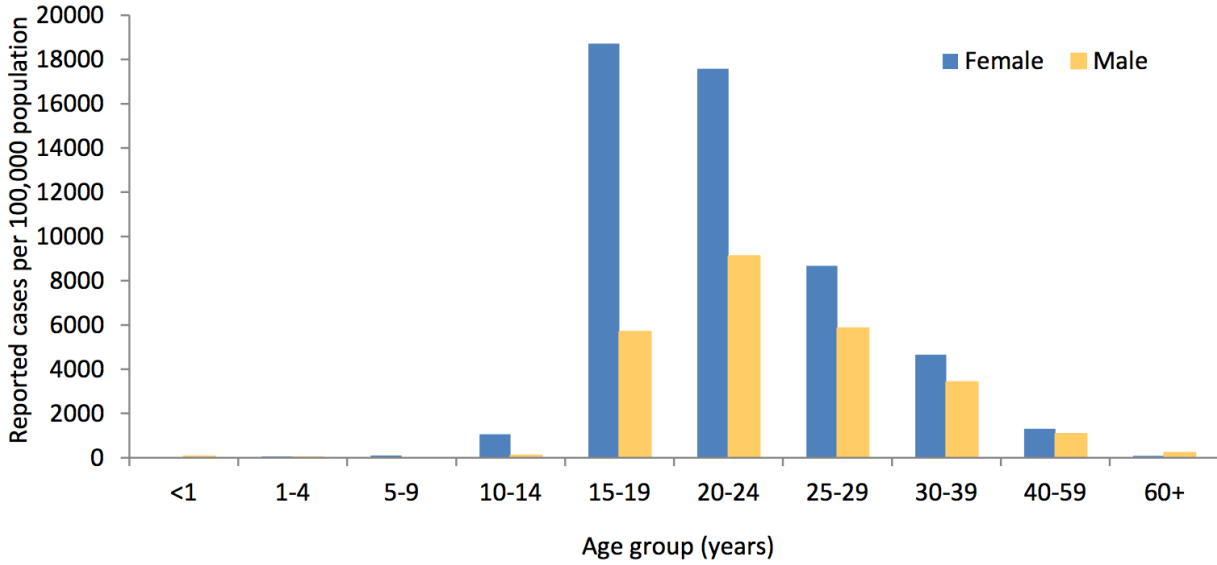


Figure 1(1, p11).

**Age-Standardized (15-24) Incidence Rates of Chlamydia in Nunavut and the rest of Canada, 2007 to 2014**

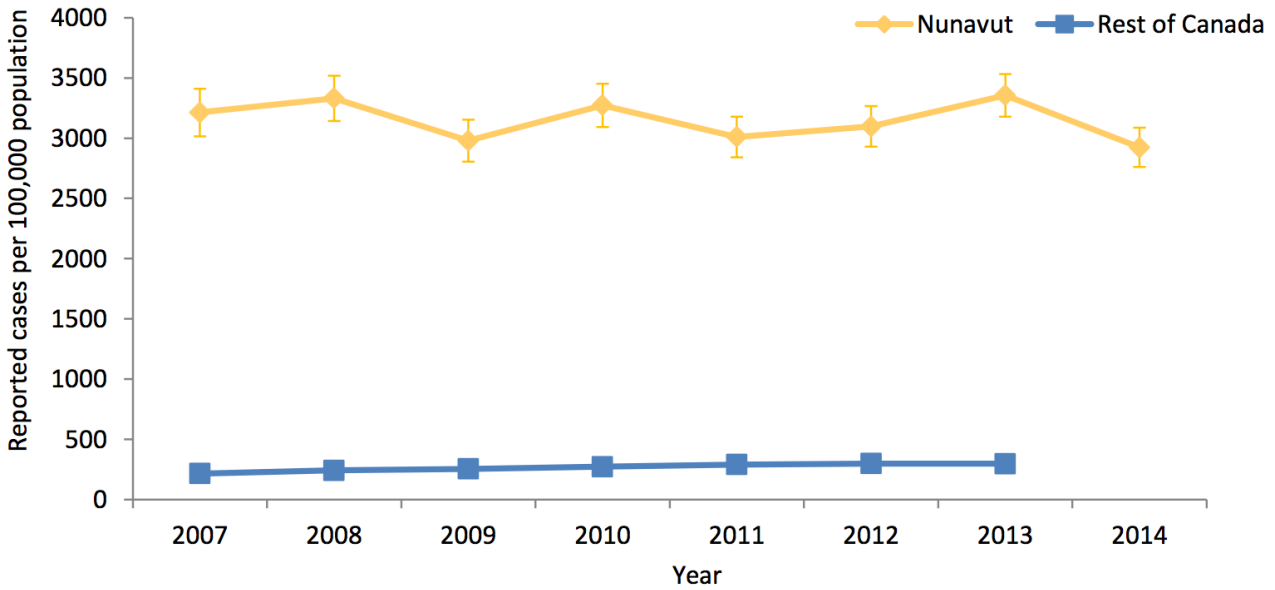


Figure 2 (1, p10).

**Average Annual Crude Incidence Rates of Gonorrhoea in Nunavut by Age and Sex, 2007-2014**

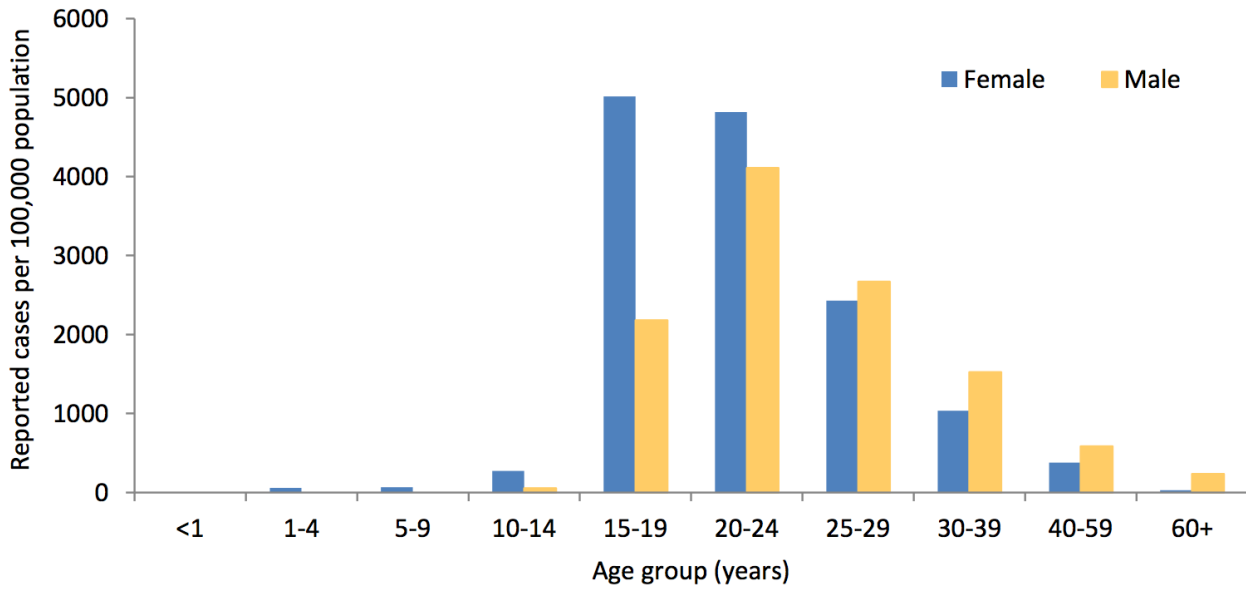


Figure 3 (1, p13).

**Age-Standardized (15-24) Incidence Rates of Gonorrhoea in Nunavut and the rest of Canada, 2007-2014**

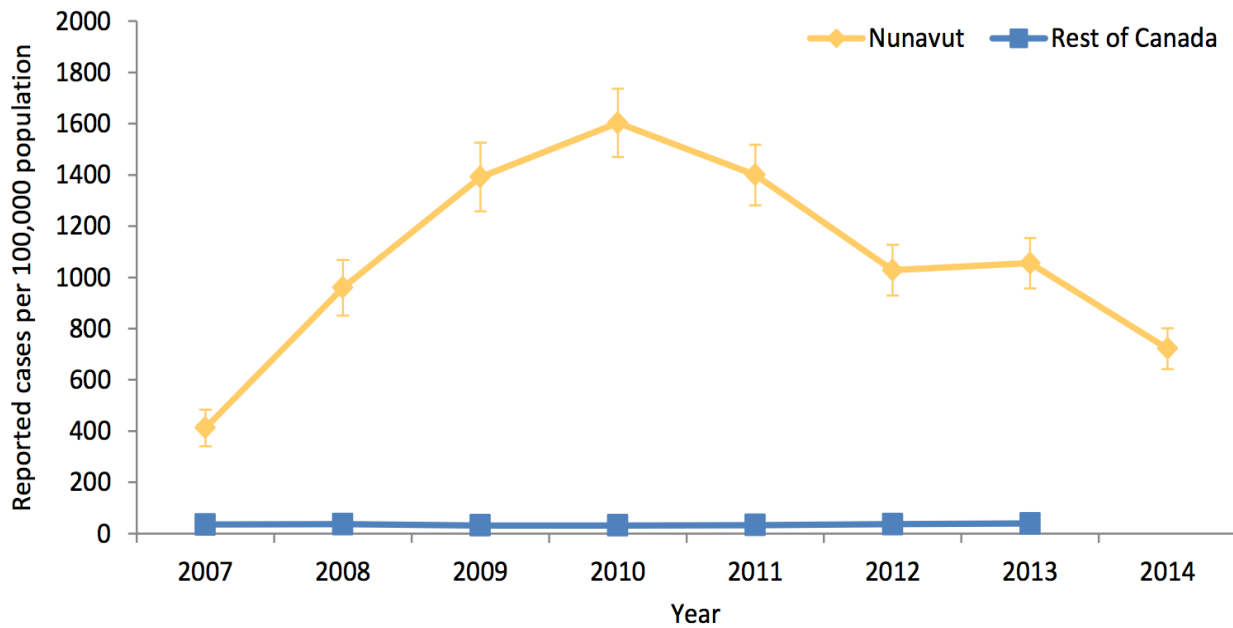


Figure 4 (1, p12).

### Average Annual Crude Incidence Rates of Syphilis in Nunavut by Age and Sex, 2007 to 2014

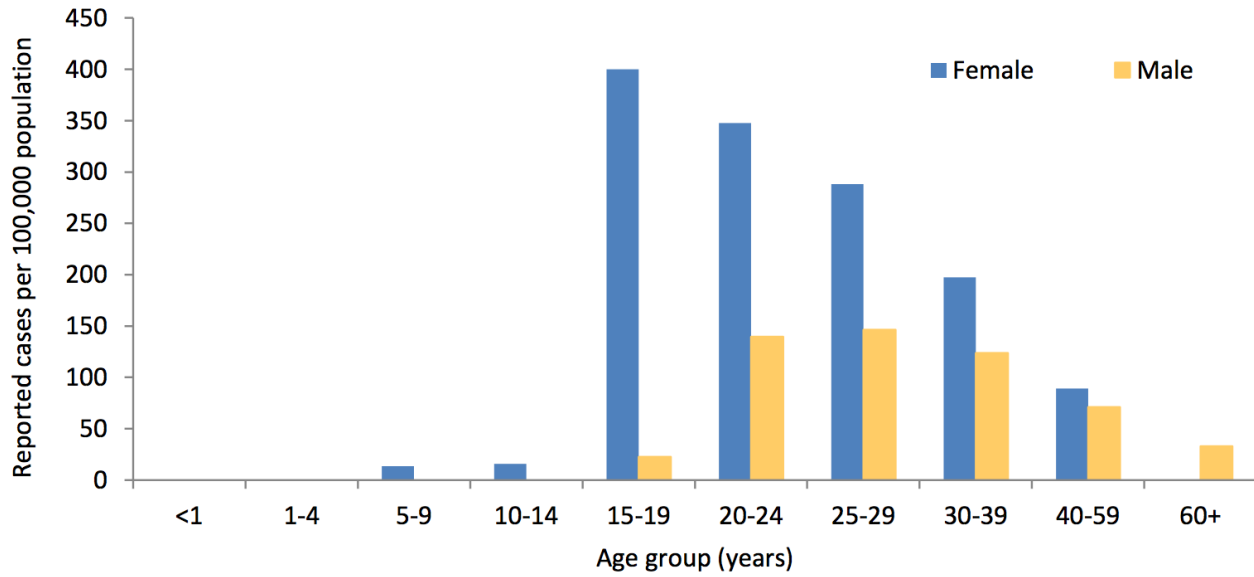


Figure 5 (1, p15)

Appendix 2: Maps



Figure 6, Arviat (at pinpoint), Nunavut, Canada (From Google Maps).

