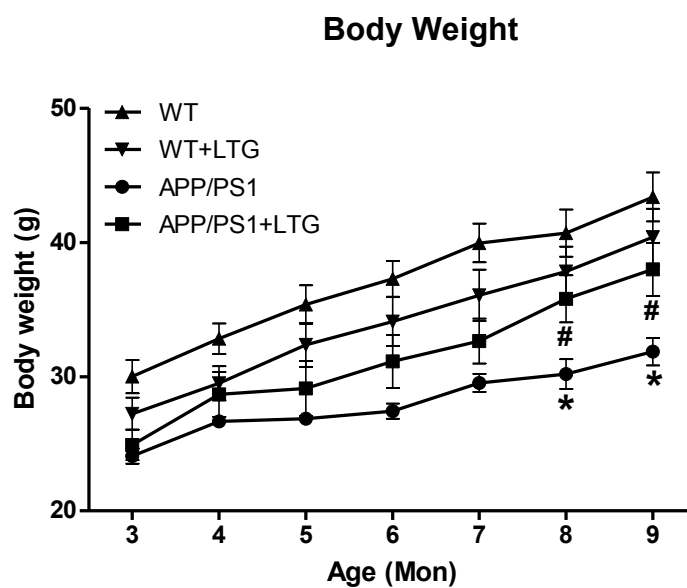
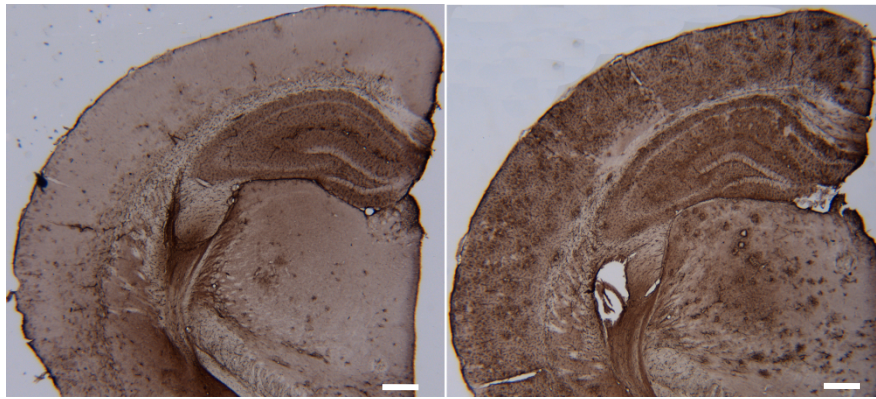


Supplementary Fig. 1



The body weight of each group were measured bi-weekly and analyzed here monthly. A significant lower weight gain was observed in the 8- and 9- month old APP/PS1 mice ($p < 0.01$ vs WT) but LTG treatment (APP/PS1+LTG) could result in an increase of body weight gain in the APP/PS1 mice ($p < 0.01$ vs APP/PS1). $n = 7-15$ in each group

Supplementary Fig. 2



WT

APP/PS1

GFAP staining in WT and APP/PS1 mouse brain section. Scale bar =500 μ m

Supplementary Fig. 3



WT

Congo Red staining in WT mouse brain section. Scale bar =500 μ m