

Supplementary Information

High Vimentin Expression Correlated with Lymph Node Metastasis and Predicated a Poor Prognosis in Oral Squamous Cell Carcinoma

Shuli Liu^{1,2, #}, Liu Liu^{1, 2, #}, Weimin Ye^{1,2, #}, Dongxia Ye^{1,2}, Tong Wang³,
Wenzheng Guo³, Yueling Liao³, Dongliang Xu³, Hongyong Song³, Ling Zhang^{1,2},
Hanguang Zhu^{1,2}, Jiong Deng^{3,4,5 *}, Zhiyuan Zhang^{1,2 *}

¹Department of Oral and Maxillofacial–Head and Neck Oncology, Ninth People’s Hospital, Shanghai Jiao Tong University School of Medicine, Shanghai, China

²Shanghai Key Laboratory of Stomatology

³Key Laboratory of Cell Differentiation and Apoptosis of Chinese Minister of Education, Shanghai Jiao Tong University School of Medicine, Shanghai, China.

⁴Shanghai Key Laboratory for Tumor Microenvironment and Inflammation, Shanghai Jiao Tong University School of Medicine, Shanghai, China.

⁵Translation Medicine Center, Shanghai Chest Hospital, Shanghai Jiao Tong University, Shanghai, China

***Correspondence to:** Jiong Deng: jjiongdeng@shsmu.edu.cn

Zhiyuan Zhang: zhzhy@sjtu.edu.cn

Fig. S1

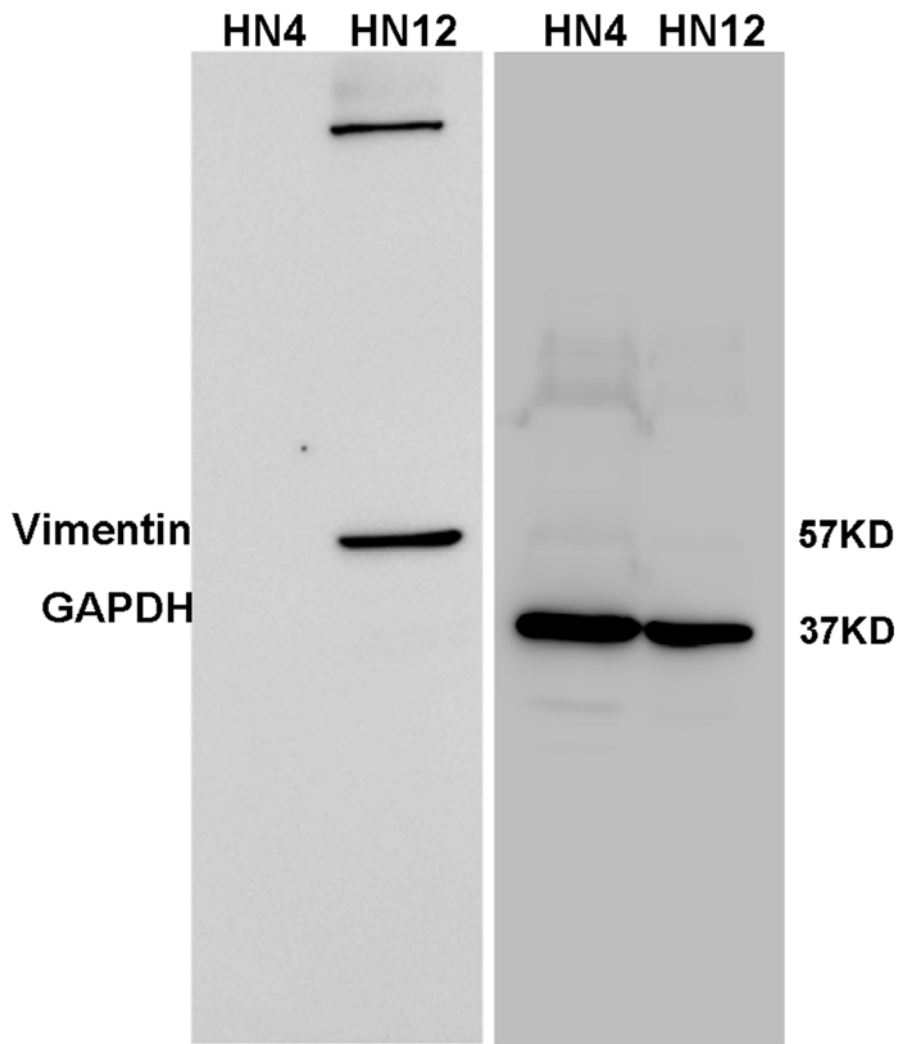


Fig. S1 Westernblot analysis of vimentin protein levels in HN4 and HN12 cell lines.

Fig. S2

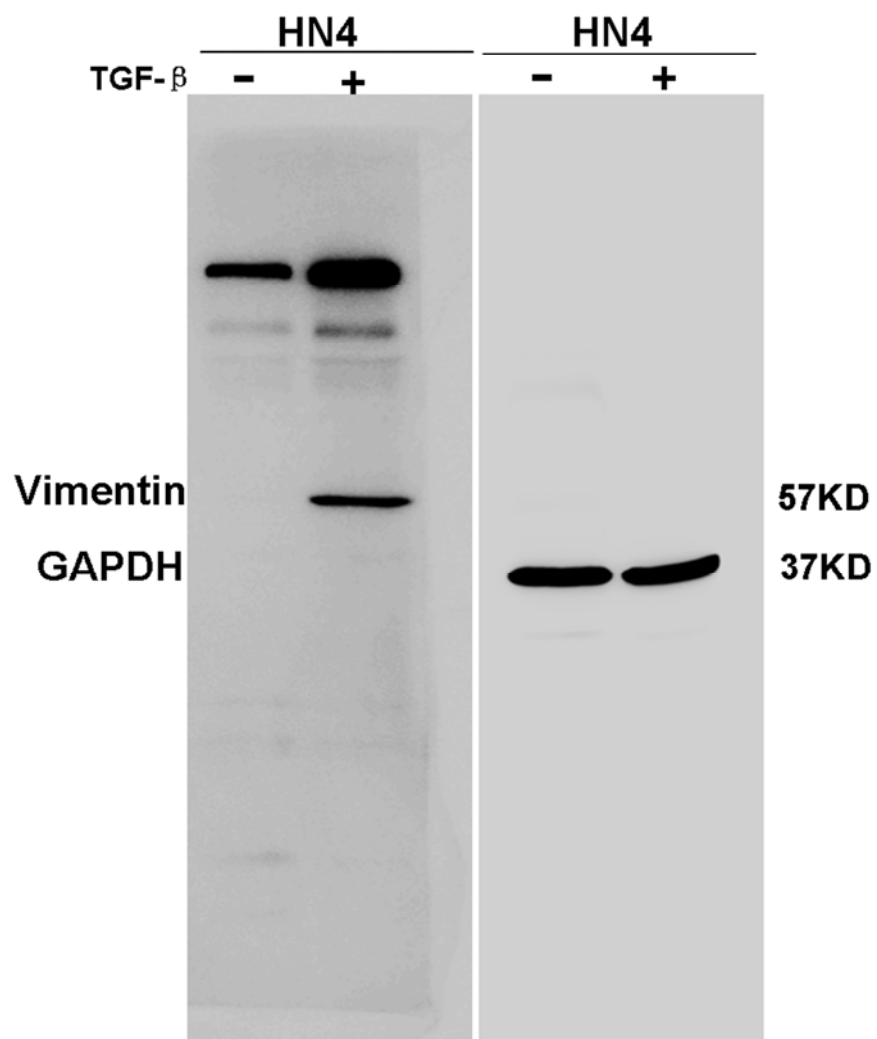


Fig. S2 Western blot analysis of vimentin in HN4 cells treated with or without TGF- β .

Fig. S3

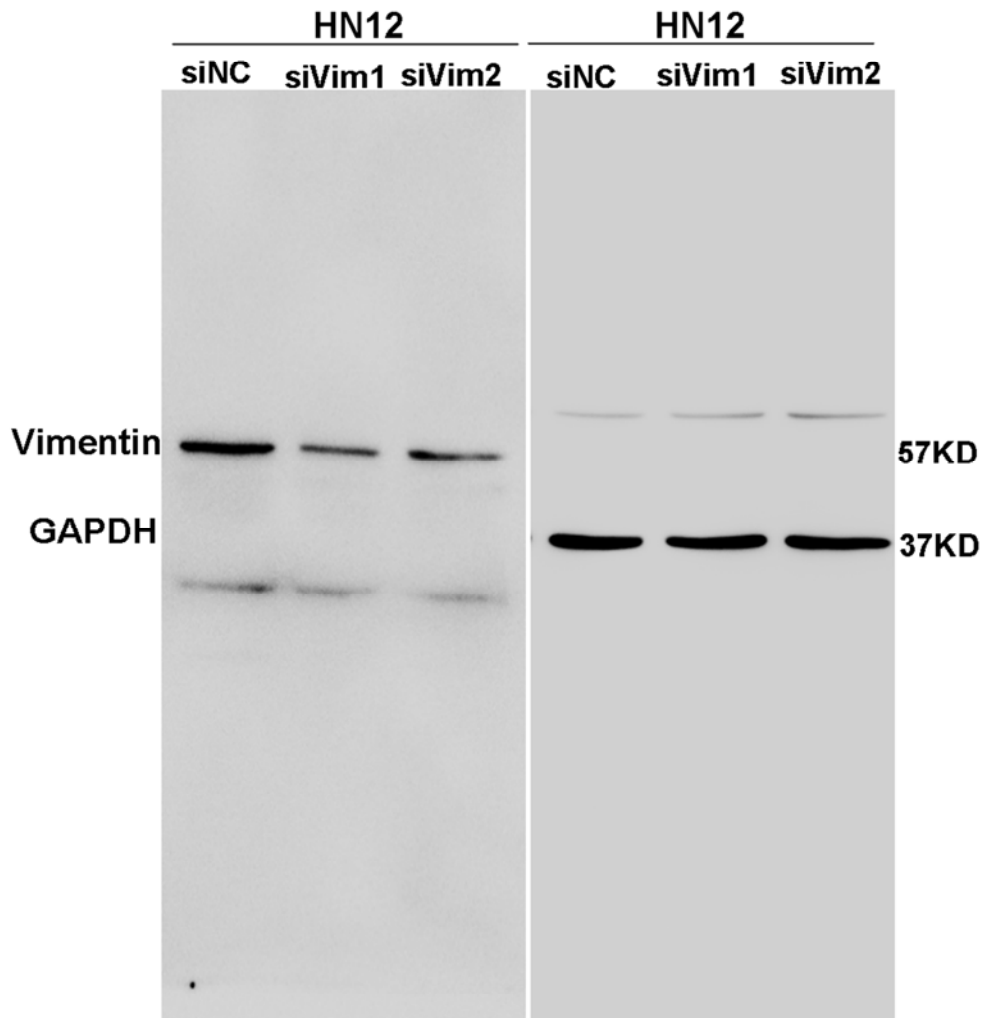


Fig. S3 Western blot analysis of vimentin in transfected HN12 cells with knockdown of vimentin and control HN12 cells.