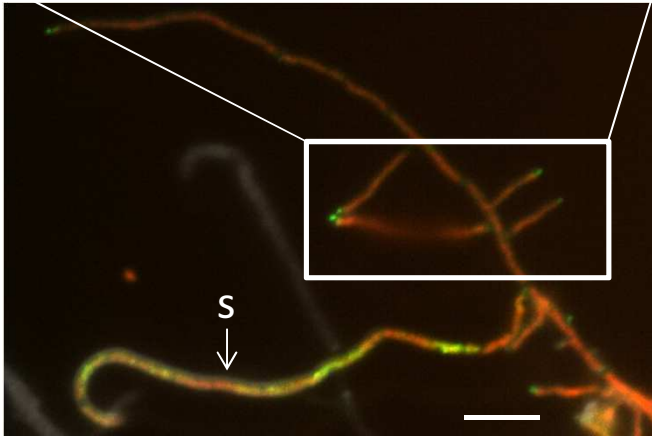
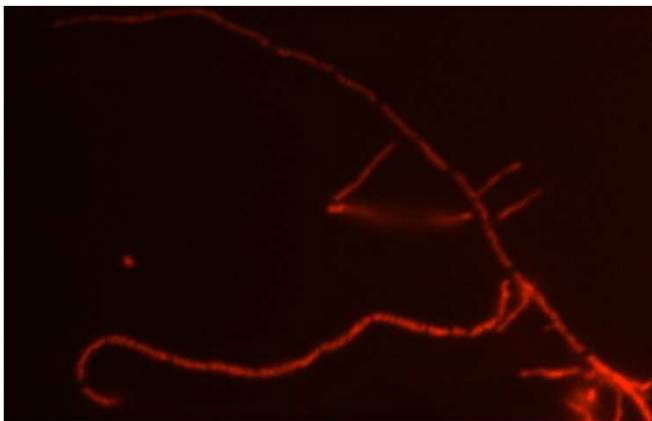


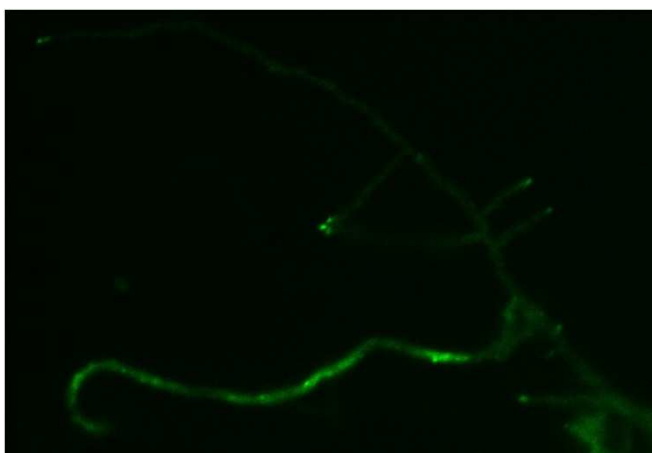
DNA (PI) /ParA-EGFP



DNA (PI) /ParA-EGFP



DNA (PI)



ParA-EGFP

Fig. S4 The localization of ParA (green) overlaid with DNA (red) in hyphae of *parA-egfp* strain (DJ590). In vegetative hyphae (marked with “v”) ParA is localised exclusively at the hyphal tips while in sporogenic hyphae (marked with „s”) it is dispersed along the hyphae. The images are the snapshots of fixed 24 hours hyphae stained with propidium iodide (PI) to visualise DNA. Scale bar – 5 μ m.