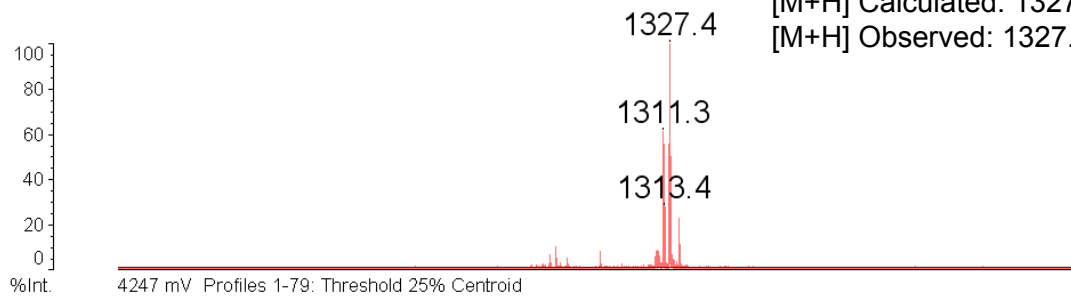


**B**

Start of reaction

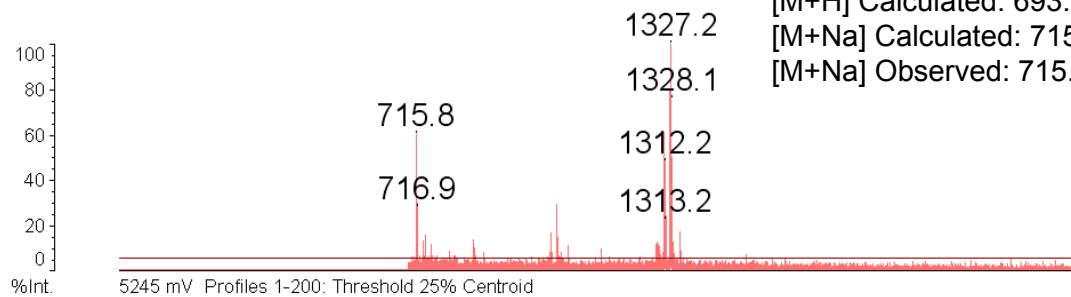
%Int. 333 mV[sum= 26314 mV] Profiles 1-79 Smooth Av 1



Full length peptide: (mca)GSPAFLAK(dnp)dR  
[M+H] Calculated: 1327.42  
[M+H] Observed: 1327.4

After 24 hour incubation

%Int. 37 mV[sum= 7325 mV] Profiles 1-200 Smooth Av 1



Expected cleavage product: (mca)GSPAF  
[M+H] Calculated: 693.7  
[M+Na] Calculated: 715.6  
[M+Na] Observed: 715.8