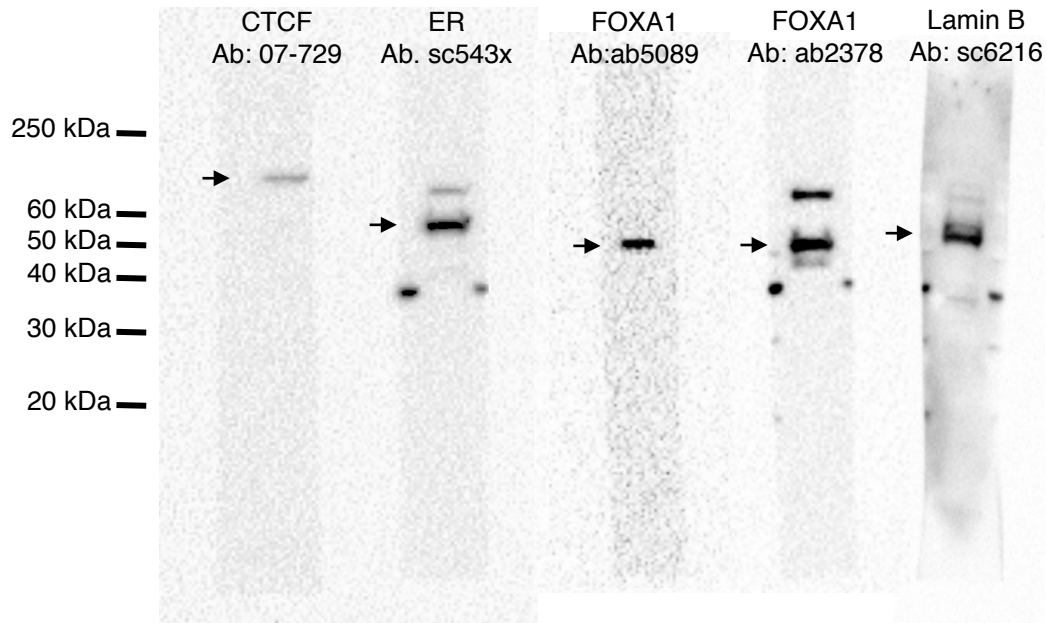


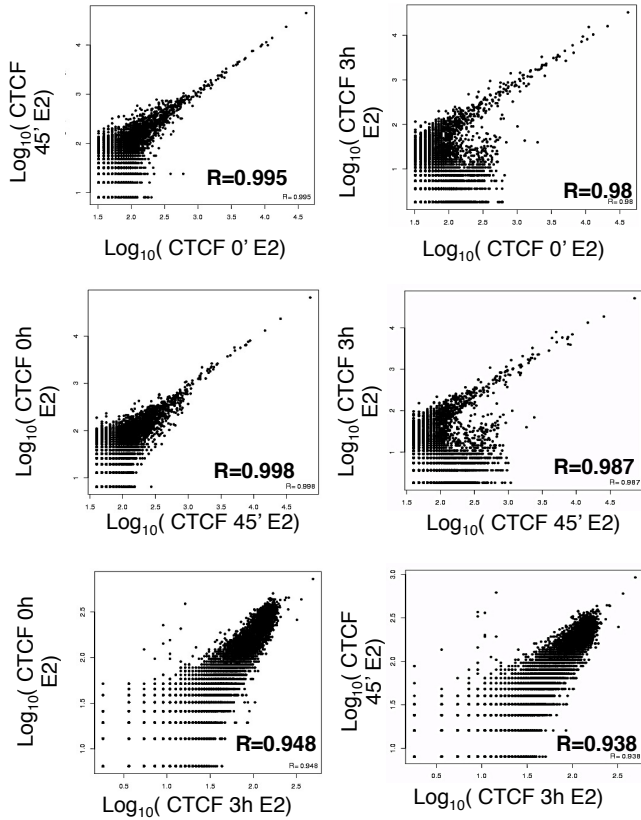
Additional file 1

MCF-7 cells: WB for CTCF, ER, FOXA1 and Lamin B

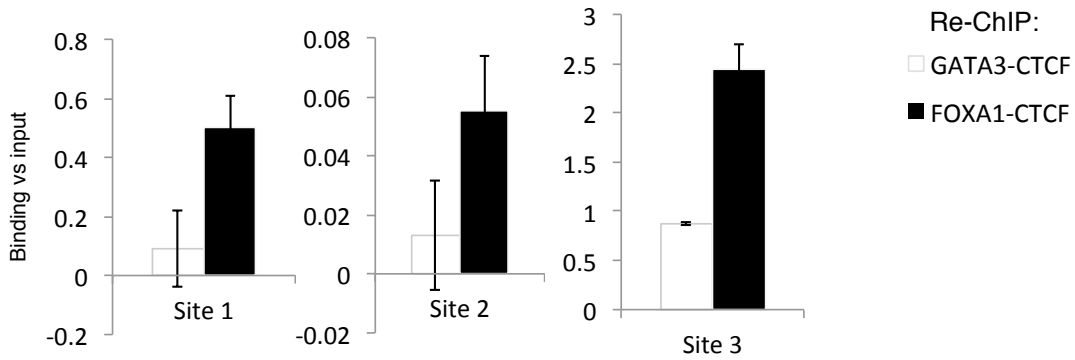


Additional file 2

A Pearson correlation plot of estrogen-regulated CTCF chromatin binding

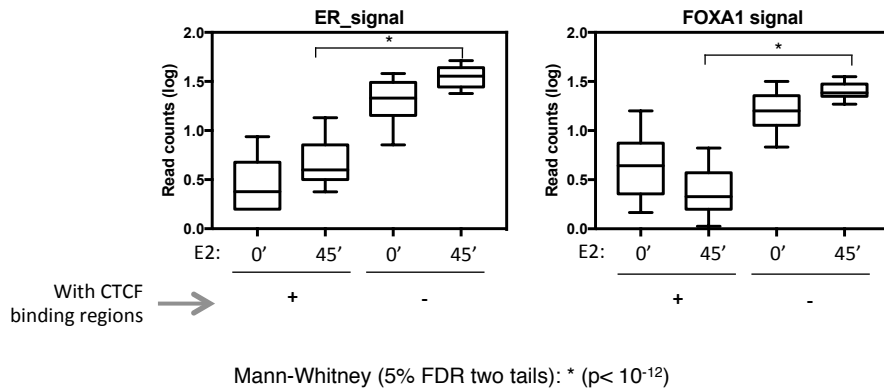


B Re-ChIP at 3h preferred CTCF sites

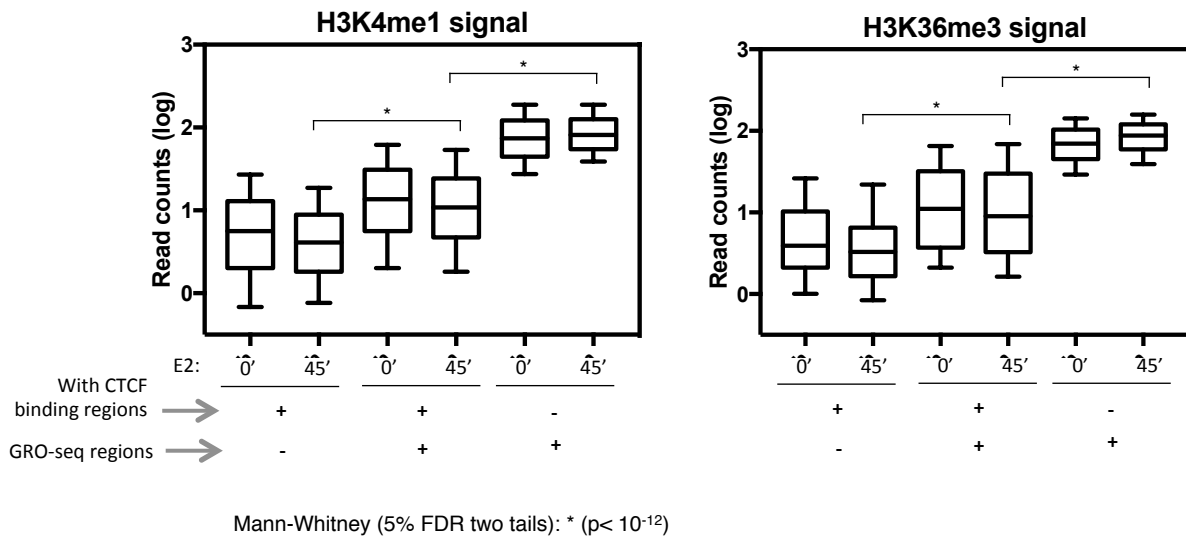


Additional File 3

A Transcription Factor Binding at GRO-seq regions with or without CTCF binding



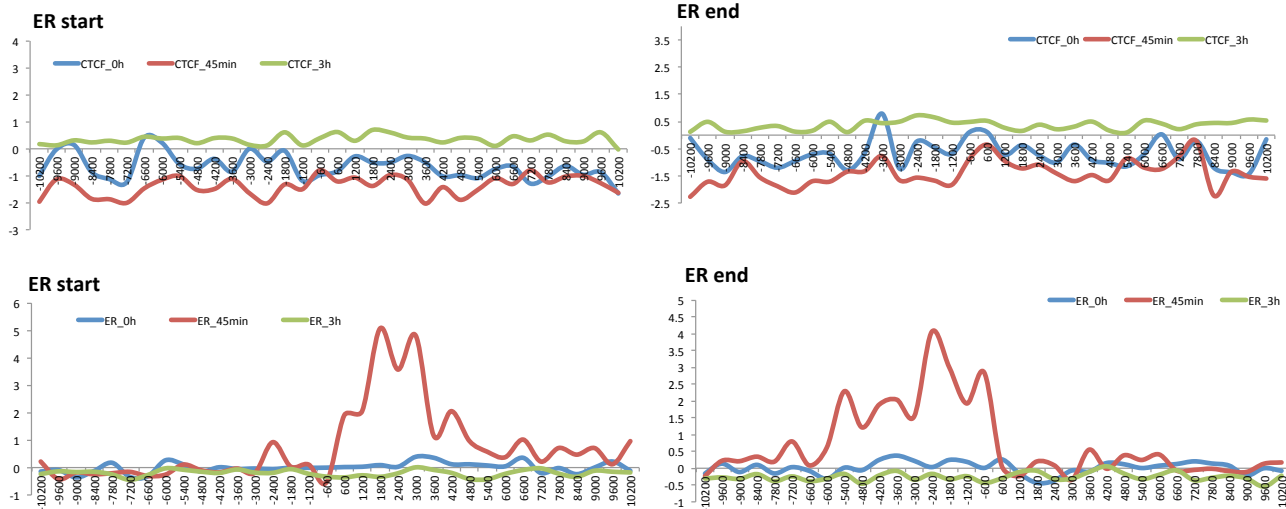
B Histone modification



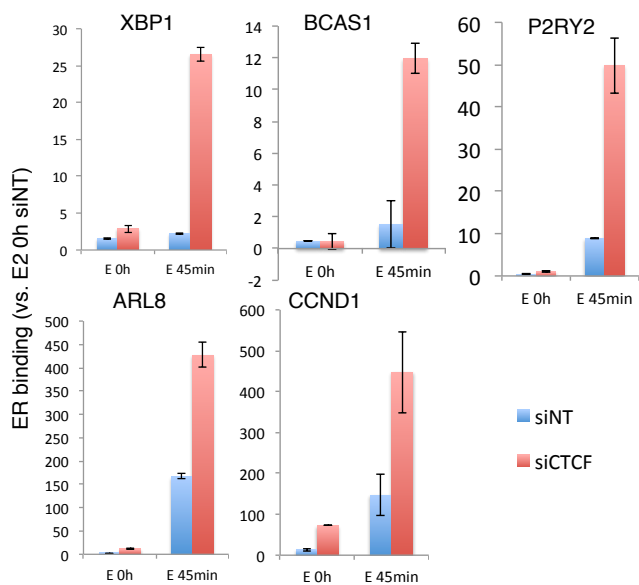
Additional File 4

A Analysis of CTCF binding distribution within ER-ER loops (ER ChIA-PET from Fullwood et al., 2009)

ER loops without CTCF binding



B ER ChIP-PCR at ER loops

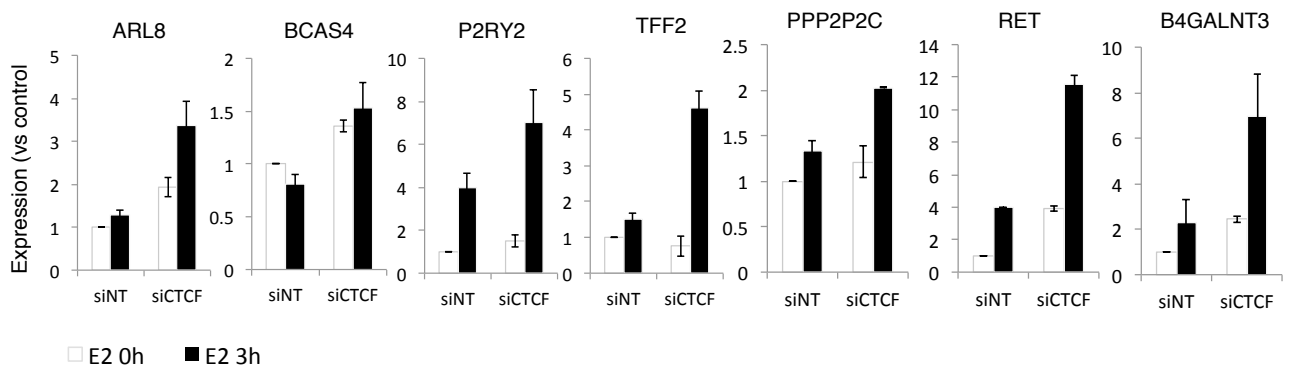


Additional file 5

A List of genes estrogen and CTCF modulated

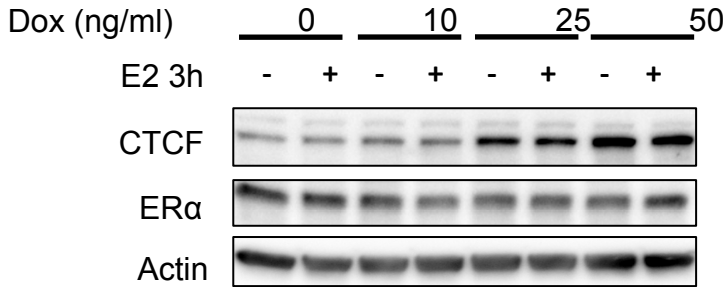
CTCF repressed genes					CTCF induced genes		
ABCA17P	KCNN3	SERPINB9	CRISPLD2	PADI4	ABCC13	PPM1K	HEG1
ACVR1C	KCNQ1	SH2D3C	CXCL12	PBX4	ABHD12B	PRR15	HLA-DRB6
ADRA2B	KIF26B	SH3TC1	CXXC5	PCNA	ACSL5	QDPR	IER3
ARL8A	KLF13	SLC38A11	DAAM2	PCYOXA1L	ADAMTS9	RASGRP1	IL10RA
ASB2	KLHL14	SMOX	DHRS3	PDK4	AQP3	RBM24	LAMC2
ASTN2	KRT24	SMTNL2	DLL1	PDLIM2	BCL11B	RELB	LARGE
ATP4A	KRT37	SSTR2	DMRT2	PIP5KL1	BIRC3	RGS7BP	LGR4
B3GNT3	KRT73	ST6GALNAC4	DNMT3B	PIWIL4	C22orf24	SFXN2	LIMK1
B4GALNT3	LHX4	SYT12	E2F2	PKP1	CADM1	SLC16A9	MAP3K5
BCAS4	LMAN1L	TANC1	EGFR	PLA2G16	CAV1	SLC22A23	MED13L
C14orf132	LOC100133669	TBC1D10A	ELF3	PNPLA3	CD36	SLC27A4	MERTK
C1orf194	LOC81691	TFF2	ELL	PODXL	CDRT1	SLFN5	MID1
C1QTNF1	LOX	TMEM64	EMP2	PPP2R2C	CEACAM1	SPTLC3	MTHFD1L
CA8	LPAR1	TMIE	FAM43A	PRKCA	COL27A1	ST3GAL5	MUS81
CACNA1I	LRG1	TMPRSS2	FARP1	PRUNE	CREG2	STX11	N4BP3
CD44	LRP4	TNFAIP8L3	FDXR	PSPH	CTGF	TGM2	NRP2
CHEK2	LRTM2	TNS1	FUT4	PTGES	DTX3L	TNS3	NRXN3
CHST8	MAFB	TNS4	GADD45B	RAB36	EDN1	UGT8	OPN3
CIB2	MAN1C1	TUBA3D	GAL	RAB37	ENPP2	VDR	PDLIM7
CITED1	MAT1A	VASN	GINS2	RASSF3	EPDR1	WISP2	PKFEB3
CYP26A1	MB	WNT16	GLB1L2	RGS10	ETV6	40238	PIP5K1C
CYP46A1	MICAL2	WNT4	GLRB	RGS3	FAT1	ABAT	PLAT
CYP4F3	MYBL1	38231	GPRIN1	RHOD	FILIP1L	ABCC3	PLEKH01
DPYSL4	MYOT	ABCA3	GPSM1	SCNN1G	FLRT3	ABCG2	PLOD2
DSCAML1	MYRIP	ACOT4	GRIN2C	SERINC2	FMO1	ABLIM1	PPARGC1B
EDN2	NECAB2	ACSS1	HDAC11	SERPINE2	FRMD3	ALX4	PRSS23
EFCAB10	NKAIN1	ADARB1	HDCC2	SLBP	G6PD	ANXA2	RHBDF2
ERG	NLRP6	ADORA1	HOXC8	SLC16A3	GBP1	APCDD1	RND3
FADS2	NTN1	ADRB1	HSPA1L	SLC25A42	GBP2	ATXN1	RPL22L1
FAIM3	OSCAR	AHDC1	ICOSLG	SLC29A1	GMPR	BACE1	RUSC2
FAM13C	OTOF	AHNAK2	ITGA6	SLC46A2	HAAO	BOK	SETBP1
FAM25A	PADI3	ALS2CL	KBTBD6	SMOC2	HERC5	BTN2A2	SKAP2
FAM46C	PC	ANXA9	KCNMA1	SNX24	HERC6	C4orf19	SLC27A2
FBXO43	PGLYRP2	B4GALNT2	KCTD6	SPRY4	HLA-C	CAPG	SORCS2
FCGR2B	PLA2G4D	B4GALT1	KHDRBS3	STARDS5	HLA-DRB1	CHN2	SRF
FCGR2C	PLXDC1	BACE2	LOC285593	STK32C	HLA-DRB5	CHST11	STK10
FGF19	PLXNA4	BRIP1	LONRF2	TBC1D2	HOXB4	CYP1A1	TBXA1
FGFBP2	POM121L9P	C10orf107	LOXL1	TBX2	IRF1	DENND5B	TCF7L1
FLI12825	POU3F2	C6orf222	LSM11	TRPC6	ISG20	DOCK4	TFF1
GABRD	PIPF	CABLES2	LSM2	TSC22D3	JPH2	DTNA	TMC5
GADD45G	PPM1J	CALD1	MCM6	UBE2S	KLF7	DUSP4	TNFRSF10A
GATA5	PRC1	CCDC88C	MFNG	UBE2T	KRT81	DUSP5	TNRC6C
GATSL3	PREX1	CCR7	MITF	UNC119	MAP6D1	ETS2	TPST2
GCK	PRSS27	CDC25A	MMP11	UNC5A	ME3	FAT4	TRIM16L
GNAT1	PTGS1	CDC47	MN1	VAV2	MSRB3	FGFR2	UCA1
GPR20	PTPRH	CDR2L	MYLK	WFS1	NFE2	FLNA	ULK1
GRIK3	REEP1	CGNL1	NANOS1	WNT5B	NKD2	FOSL2	USP35
GRK5	RET	CHPT1	NCOR2	ZMIZ1	NOLC1	FRAS1	VCAN
GRM4	RHOBTB1	CHST12	NDRG1	ZMYND8	NTN4	FST	WIPF1
HPN	SCN4B	CLMN	NECAB1	ZNF473	PAPSS2	GALNT2	WWC3
IGSF22	SDC1	CLN8	NPR3	ZNF799	PARP9	GATA6	ZDHHC22
IL17RB	SDK2	COL21A1	NPTX1		PDLIM3	GPD1L	ZDHHC9
ISOC1	SEMA3G	COTL1	OLFML2A		PLEKHF1	GPR56	ZNF462
KCNG3	SERPINA5	CRELD2	P2RY2		PML	GRAMD1A	ZYX

B RT-PCR of CTCF repressed genes upon CTCF depletion

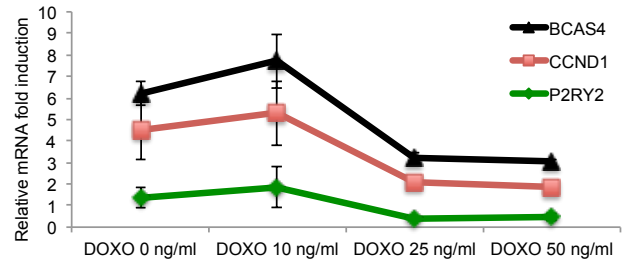


Additional file 6

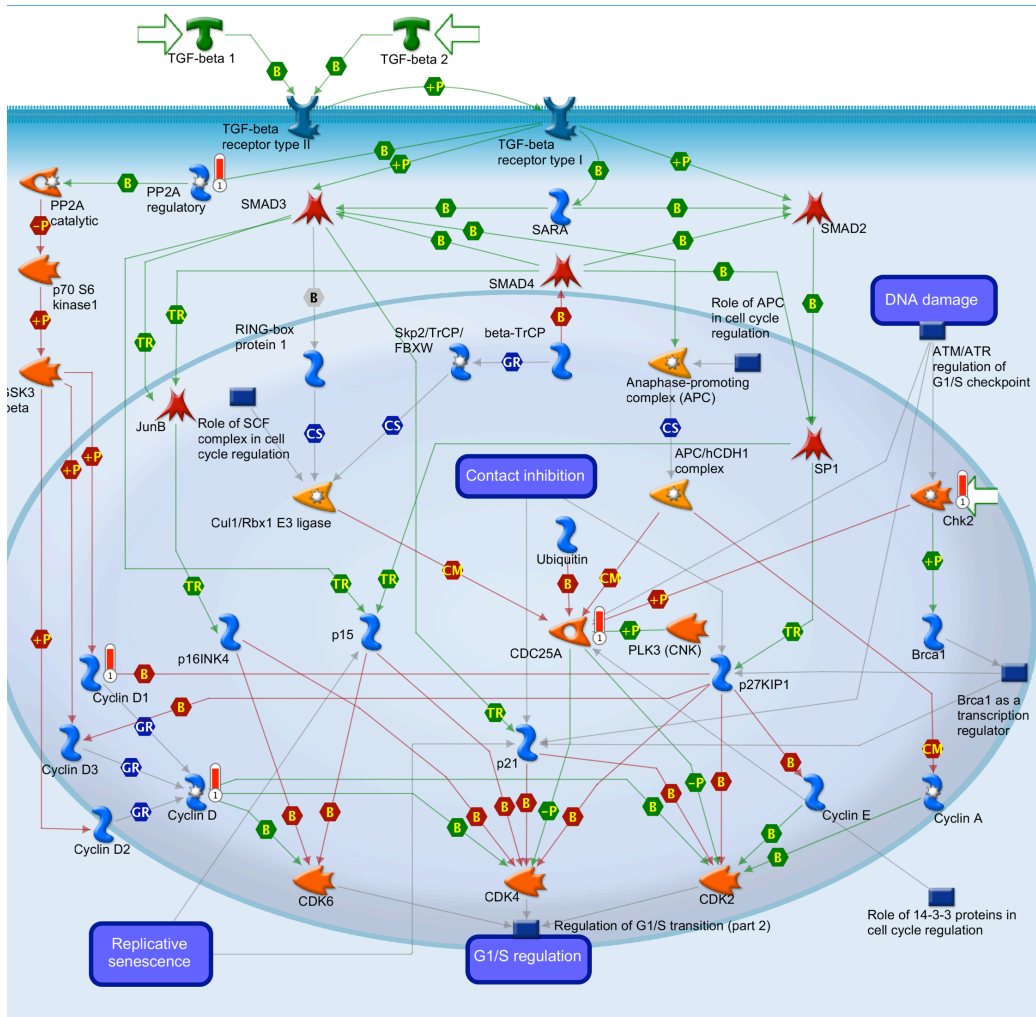
A Dose-dependent CTCF and ER protein levels



B mRNA expression analysis of E2-induced genes and CTCF repressed



C Metacore Pathway analysis of genes enriched to cell cycle

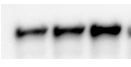


Additional file 7

A CTCF IP and Lamin B blot

E2 45min: - + -

IP Lamin B Blot: 

Supernadant Lamin B Blot: 

IP: CTCF IgG

B Analysis of Lamin B binding distribution within ER-ER loops

