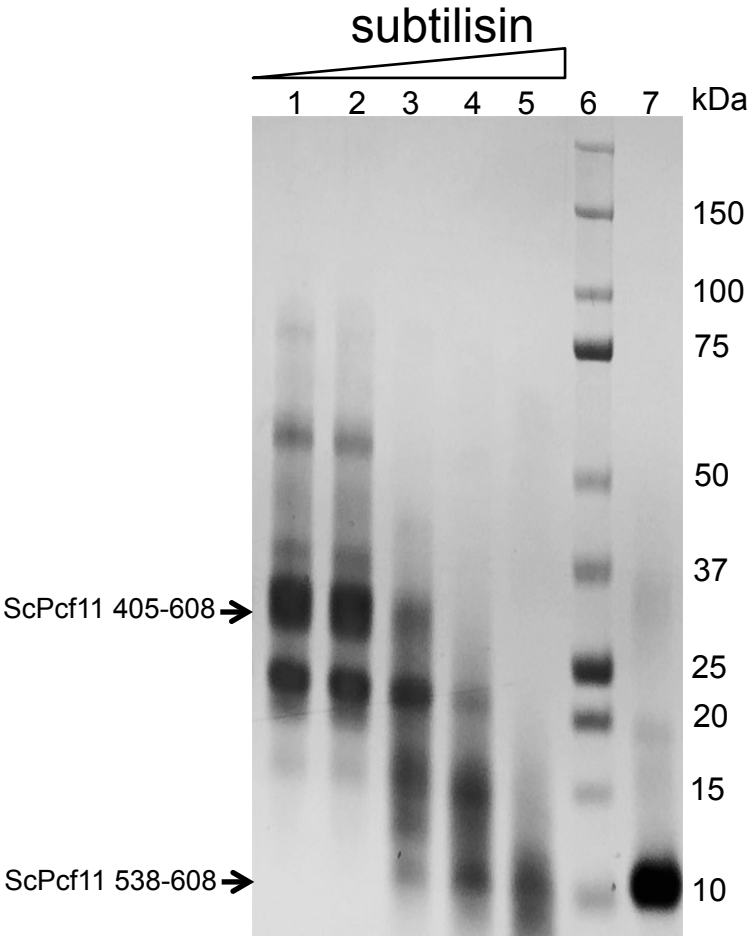
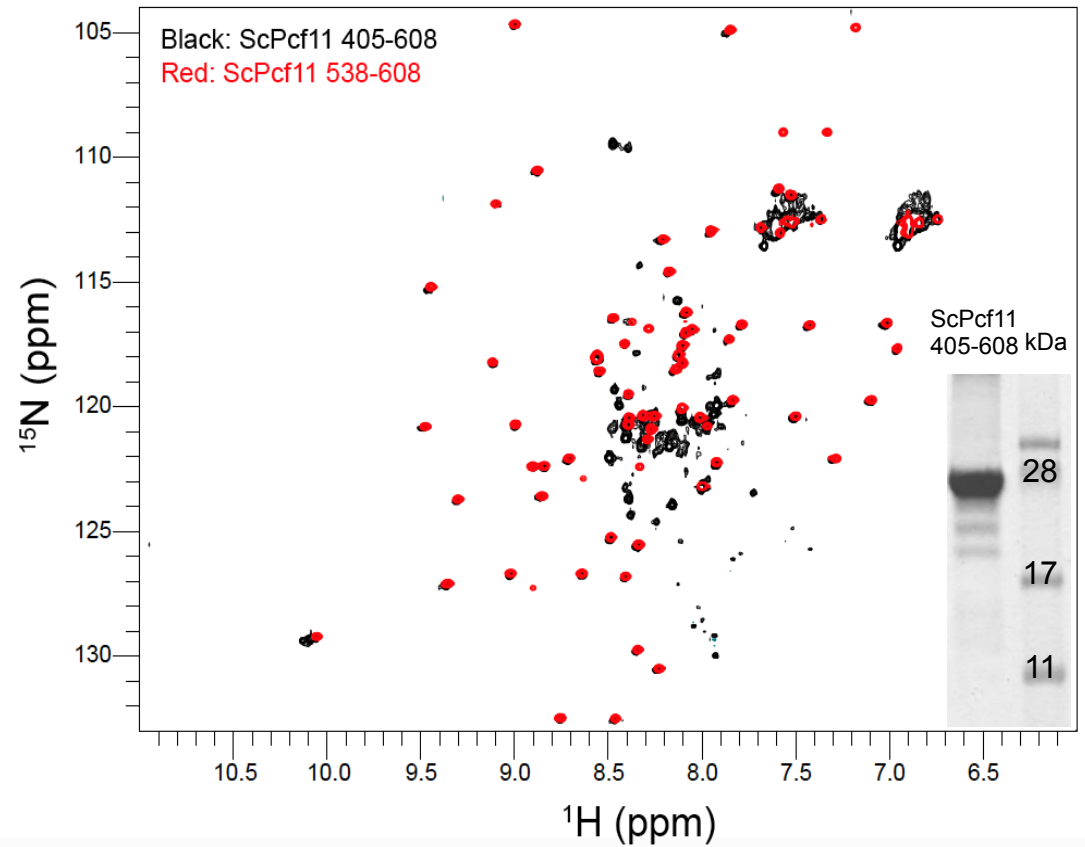


Supplemental figure S1

A



B



Supplemental figure S1 legend

ScPcf11 538-608 folds into an independent structural domain without interaction with the rest of the C-terminus. (A) SDS-PAGE of ScPcf11 405-608 fragments digested by increasing concentrations of subtilisin for 30 minutes (purchased from Sigma-Aldrich). All digestions were carried out at 4°C in NMR buffer. The mass ratio of subtilisin to ScPcf11 405-608 from lane 1 to lane 5 is 0, 0.006, 0.02, 0.06, 0.2, respectively. Lane 7 was loaded with ScPcf11 538-608 as a control. (B) Overlay of ^1H - ^{15}N HSQCs of freshly purified ScPcf11 405-608 (black) and ScPcf11 538-608 (red). SDS-PAGE image of the sample after recording the NMR spectrum is shown at the bottom right of the ^1H - ^{15}N HSQC.