

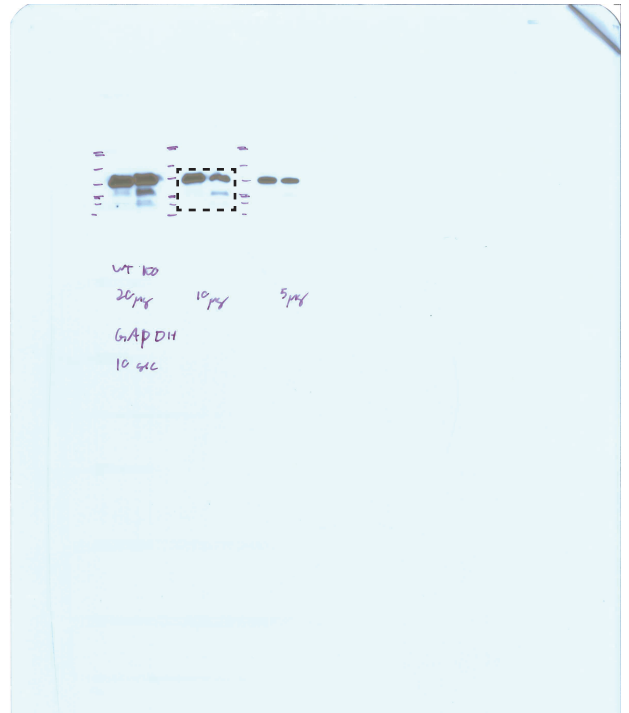
Western blot corresponding to **Extended Data Fig. 4h**

BCL2L11 and GAPDH blotting in sorted bone marrow neutrophils

BCL2L11 blot



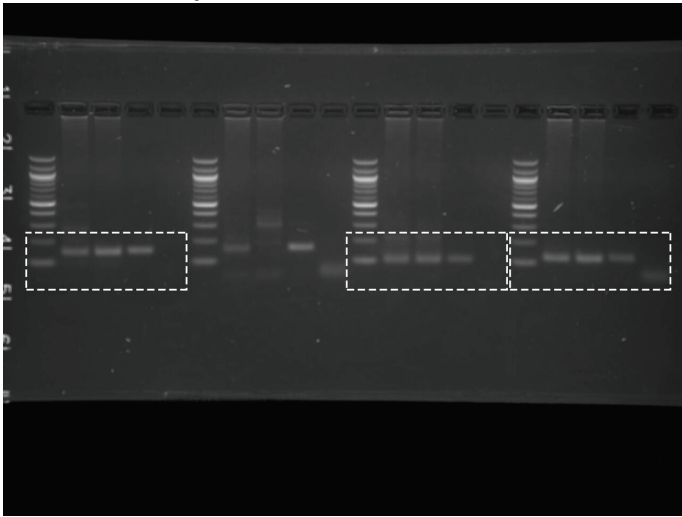
GAPDH blot



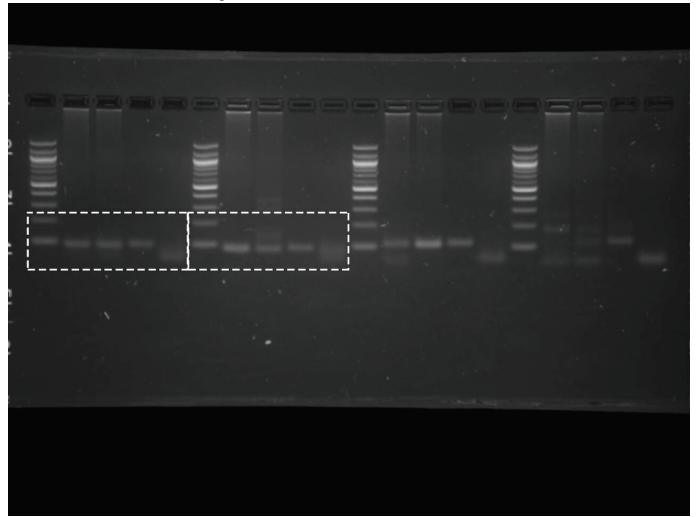
Gels corresponding to **Fig. 4d** and **Extended Data Fig. 8d**

3C control fragerments

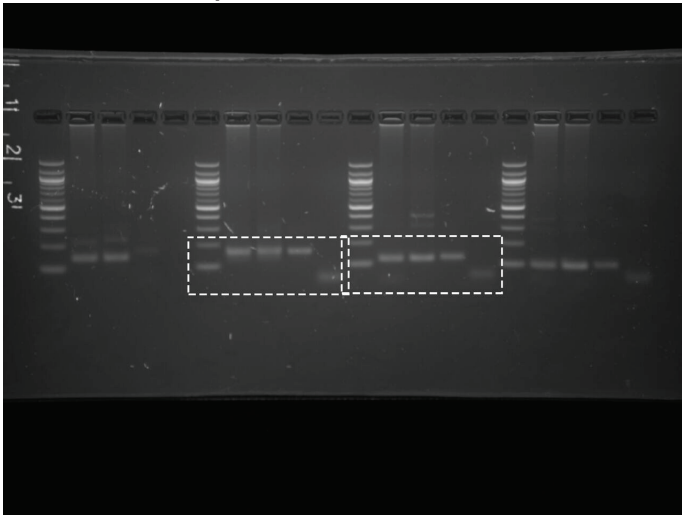
Sample 1,2 - Control 2, 5, 1



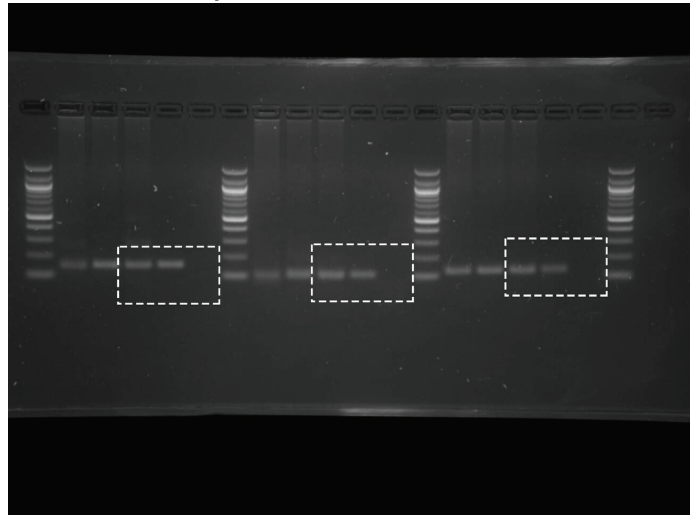
Sample 1,2 - Control 3, 4



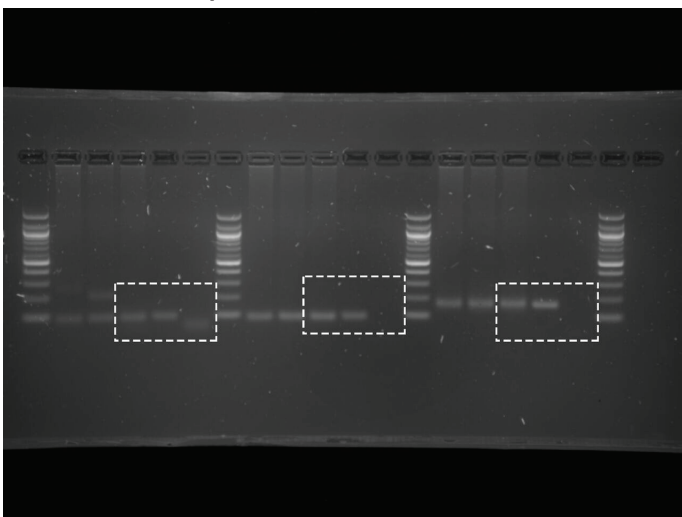
Sample 1,2 - Control 6, 7



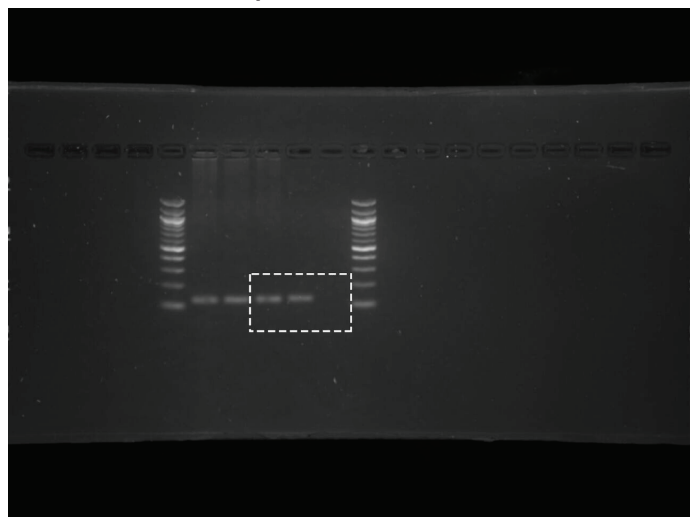
Sample 3 - Control 2, 5, 1



Sample 3 - Control 3, 4, 6



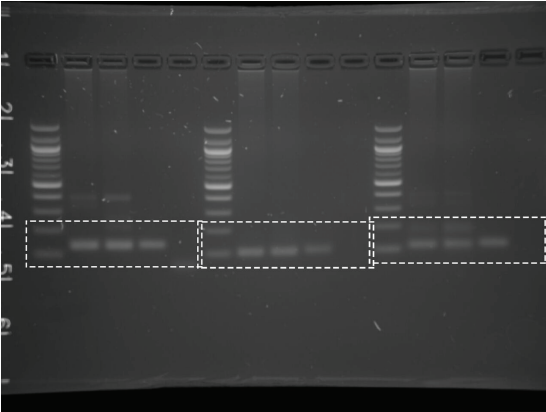
Sample 3 - Control 7



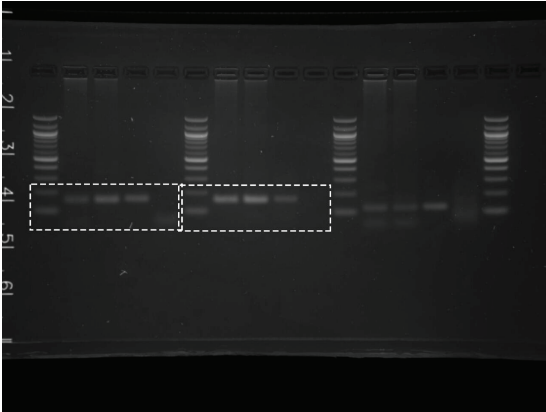
Gels corresponding to **Fig. 4d** and **Extended Data Fig. 8d**

3C test fragments

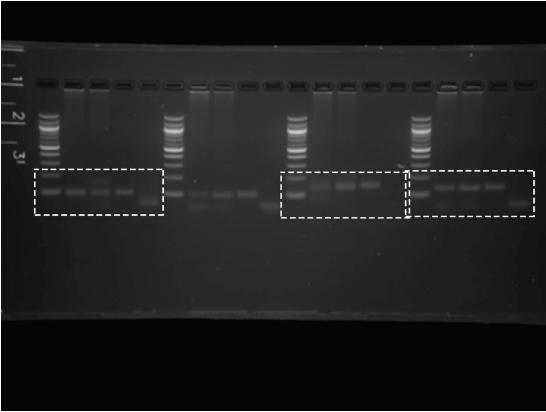
Sample 1,2 - Test 3,2,1



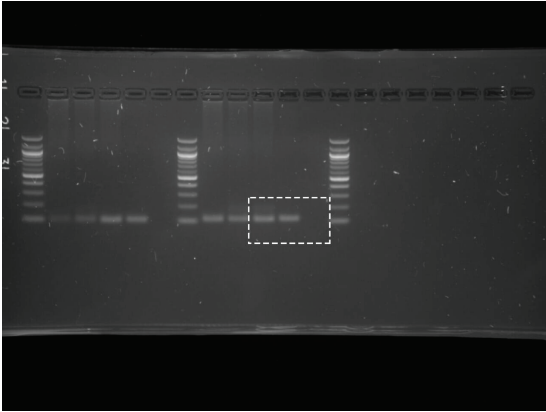
Sample 1,2 - Test 5,4



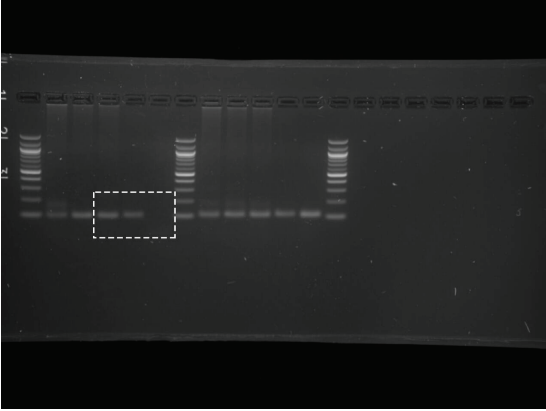
Sample 1,2 - Test 8,7,6



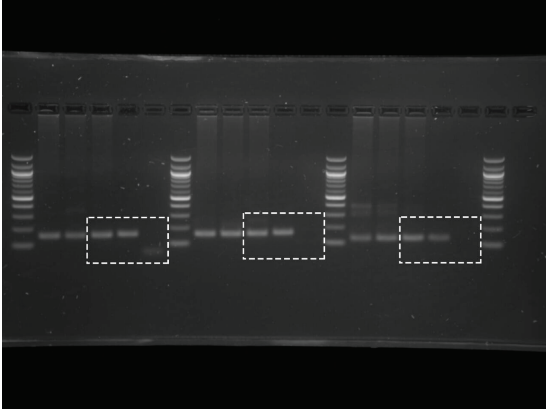
Sample 3 - Test 1



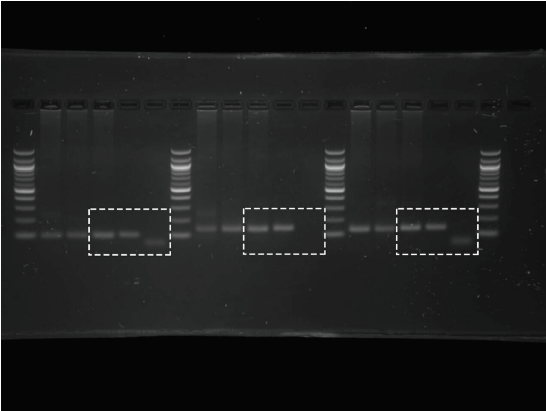
Sample 3 - Test 2



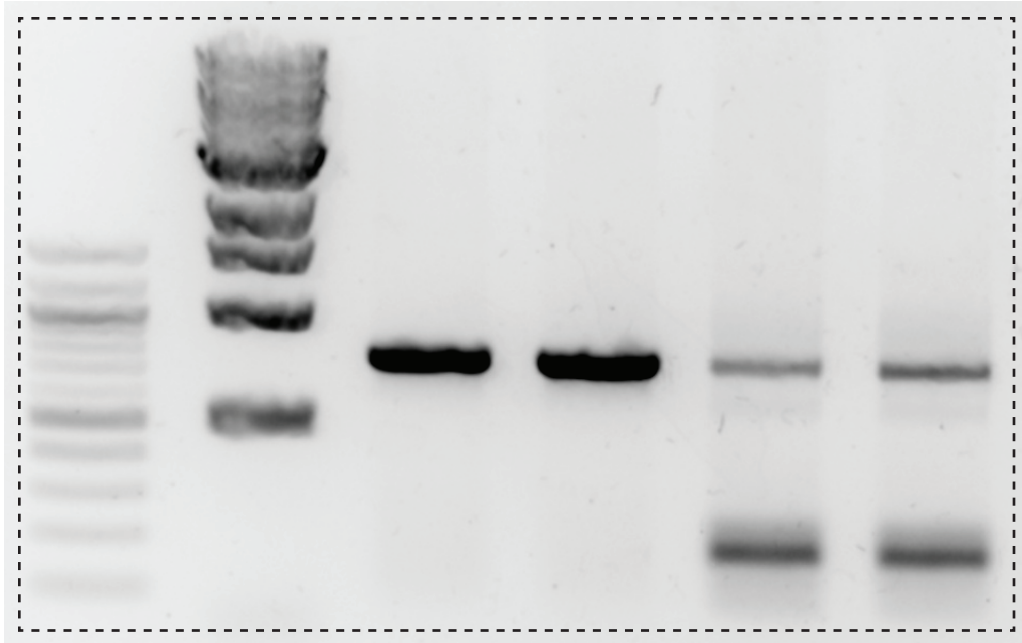
Sample 3 - Test 5,4,3



Sample 3 - Test 8,7,6



Gel corresponding to **Extended Data Fig. 6k**

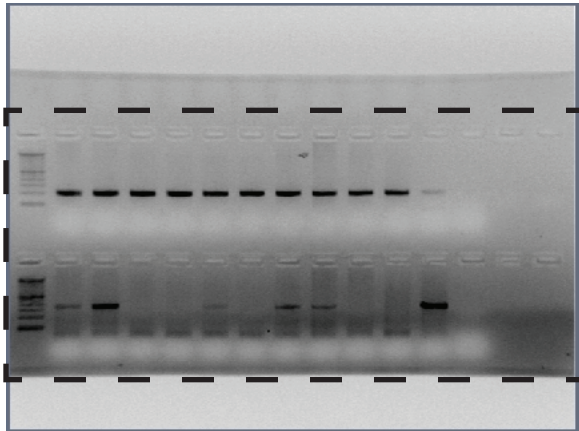


Gels corresponding to **Extended Data Fig. 9**

Allele specific *Morrbid*- and *Bcl2l11*-deficient heterozygous mice generation genotyping

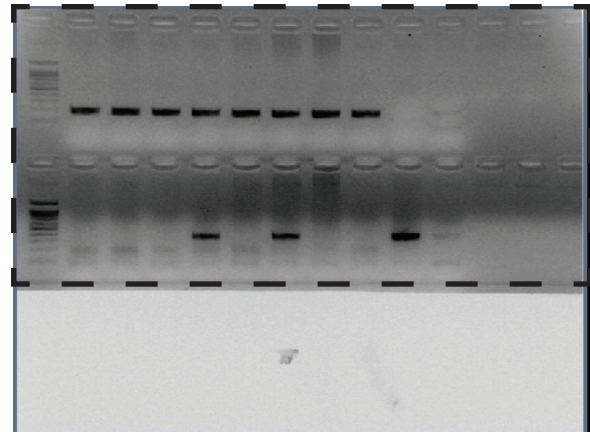
WT x *Morrbid*^{-/+};*Bcl2l11*^{-/+} Cis

Morrbid PCR

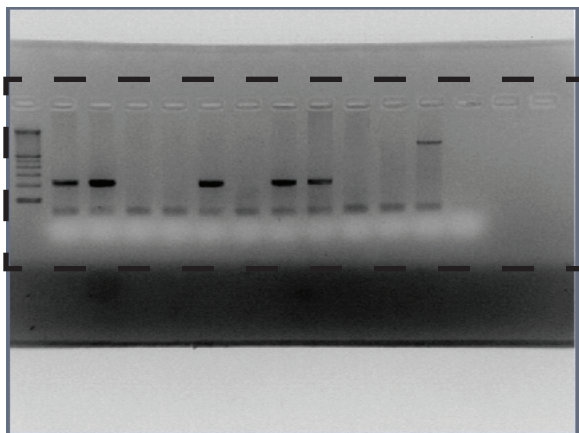


WT x *Morrbid*^{-/+};*Bcl2l11*^{+/-} Trans

Morrbid PCR



Bcl2l11 PCR



Bcl2l11 PCR

