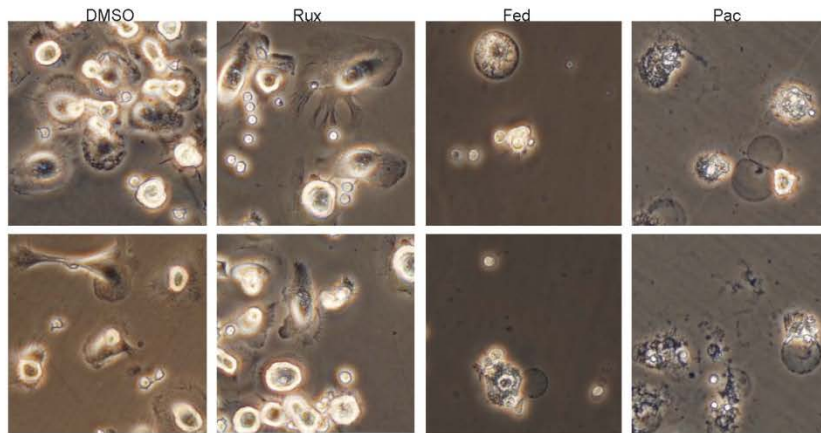


Supplementary Figure 4



Supplementary Figure 4

Pacritinib impairs viability of established nurse-like cells. NLC were generated from cultures of CLL patient PBMC, as before. CLL cells were removed from culture and adherent NLC were gently washed with fresh media, thus removing most of the CLL cells in culture. After washing, NLC were cultured with fresh media containing DMSO, ruxolitinib (5 μM), fedratinib (5 μM), or pacritinib (1 μM). NLC morphology 24 hours following treatment was examined by bright field microscopy. Representative photos from each treatment group are shown. Fedratinib- or pacritinib-treated NLC were pyknotic, swollen and frequently disintegrating.