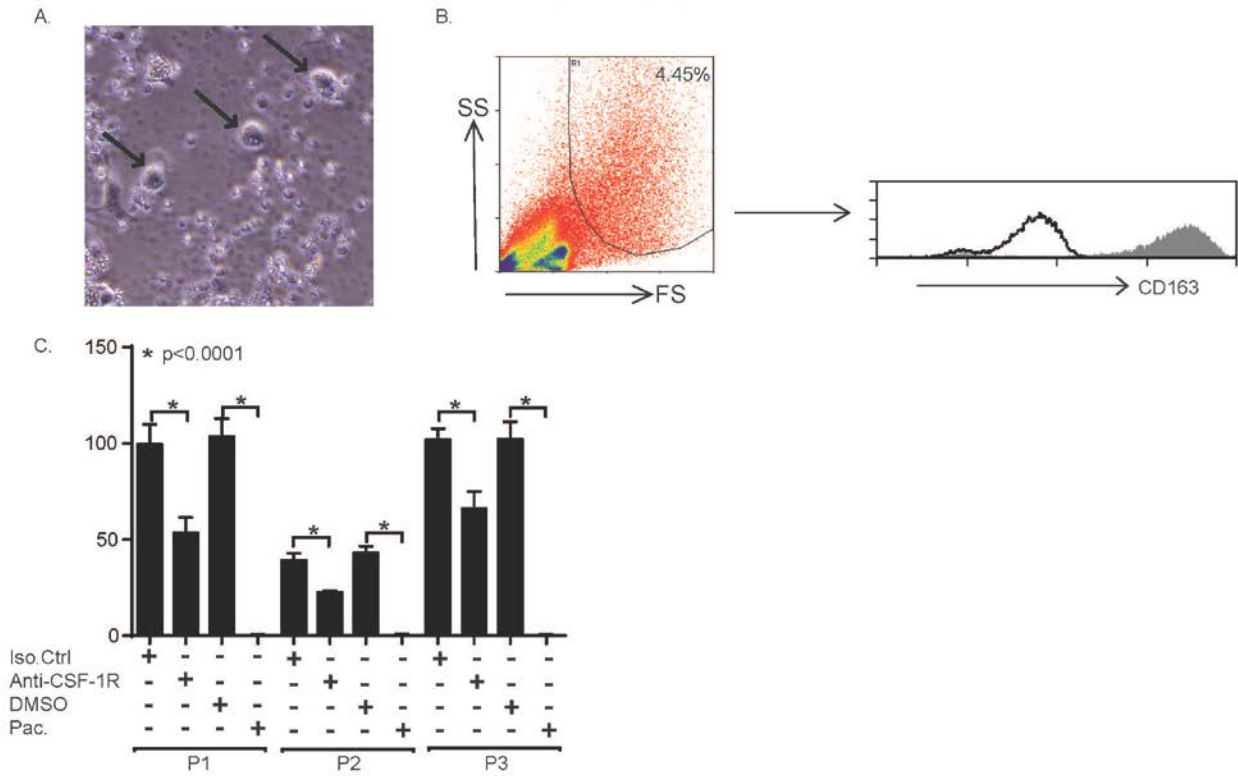


Supplementary Figure 5



Supplementary Figure 5

Generation of “nurse-like cells” in multiple myeloma. (A-C) Cryopreserved bone marrow aspirates obtained from multiple myeloma (MM) patients were cultured (3×10^6 /mL) in 24-well plates and treated, as indicated. NLC were identified by morphology (A) and by flow cytometry (B). NLC densities were determined (C). CSF-1R blockade or treatment with pacritinib impaired NLC generation in MM (3 representative patient samples are shown).