

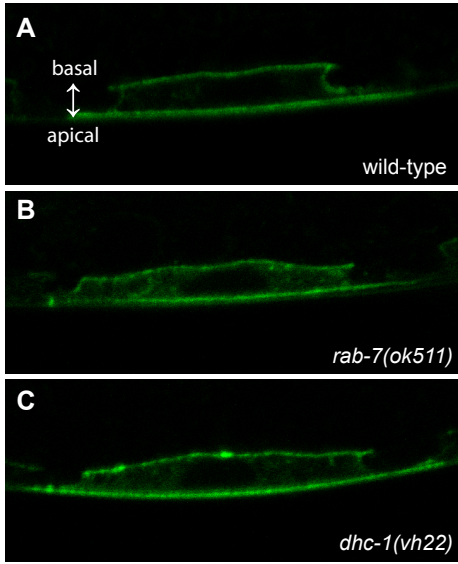
Supplemental Materials

Molecular Biology of the Cell

Skorobogata et al.

S1 Table. Strains used in this study.

BC700 *sDf4/bli-4(e937) dpy-14(e188)* I
CB1309 *lin-2(e1309)* X
CB1413 *lin-7(e1413)* II
CB1417 *lin-3(e1417)* IV
CB4856 (Hawaiian mapping strain)
EU828 *dhc-1(or195)* I
EU1386 *dhc-1(or352)* I
EU1444 *unc-119(ed3)* III; *orIs17[Pdhc-1::GFP::DHC-1; unc-119(+)]*
JK323 *qDf3/szT1[lon-2(e678)]* I; *+/szT1* X
JU2039 *mfls70[lin-3lp::rde-1, myo2p::GFP]* IV; *rde-1(ne219)* V
KR1737 *hDf6 dpy-5(e61) unc-13(e450)* I; *hDp31(I;f)*
MT2124 *let-60(n1046)* IV
N2 (Bristol wild-type parent strain)
PS80 *let-23(sy1) unc-4(e120)* II
PS295 *let-23(sy97) unc-4(e120)/mnC1[dpy-10(e128) unc-152(e444)]* II
QR160 *dhc-1(vh22)* I (this study)
QR253 *dhc-1(vh22)* I; *lin-2(e1309)* X (this study)
QR298 *dhc-1(vh22)* I; *let-60(n1046)* IV (this study)
QR362 *dhc-1(vh22)* I; *orIs17[Pdhc-1::GFP::DHC-1; unc-119(+)]*; *lin-2(e1309)* X (this study)
QR367 *dhc-1(vh22)* I; *let-23(sy1) unc-4* II (this study)
QR371 *dhc-1(vh22)* I; *lin-3(e1314)* IV (this study)
QR405 *mfls70[lin-3lp::rde-1, myo2p::GFP]* IV; *rde-1(ne219)* V; *lin-2(e1309)* X (this study)
QR476 *zhIs038[Plet-23::LET-23::GFP; unc-119(+)]* IV; *lin-2(e1309)* X (Skorobogata et al. 2014)
QR509 *dhc-1(vh22)* I; *zhIs038[Plet-23::LET-23::GFP; unc-119(+)]* IV (this study)
QR522 *dhc-1(vh22)* I; *let-23(sy97) unc-43/mnC1[dpy-10(e128) unc-152(e444)]* II (this study)
QR548 *rab-7(ok511)/mIn1[mIs14 dpy-10(e128)]* II; *zhIs038[Plet-23::LET-23::GFP; unc-119(+)]* IV (this study)
QR632 *dhc-1(vh22)* I; *zhIs038[Plet-23::LET-23::GFP; unc-119(+)]* IV; *lin-2(e1309)* (this study)
QR633 *rab-7(ok511)/mIn1[mIs14 dpy-10(e128)]* II; *zhIs038[Plet-23::LET-23::GFP; unc-119(+)]* IV; *lin-2(e1309)* X (this study)
QR634 *dhc-1(vh22)* I; *lin-7(e1413)* II (this study)
QR670 *dhc-1(or195)* I; *zhIs038[Plet-23::LET-23::GFP; unc-119(+)]* IV (this study)
QR671 *dhc-1(vh22)* I; *rab-7(ok511)/mIn1*; *zhIs038[Plet-23::LET-23::GFP; unc-119(+)]* IV (this study)
SP1540 *mnDf11/unc-13(e1091) lin-11(n566)* I
zhIs038[Plet-23::LET-23::GFP; unc-119(+)] IV (Alex Hajnal, University of Zurich)



SUPPLEMENTAL FIGURE S1: LET-23::GFP localization in P6.p. (A-C) Representative confocal images of LET-23::GFP localization in the P6.p cell of animals carrying the *zhIs038* transgene. (A) wild-type, (B) *rab-7(ok511)* and (C) *dhc-1(vh22)* animals. Some punctate LET-23::GFP structures can be seen in P6.p in some *rab-7(ok511)* animals. However, this punctate localization pattern is more consistently seen in the P6.p daughters.