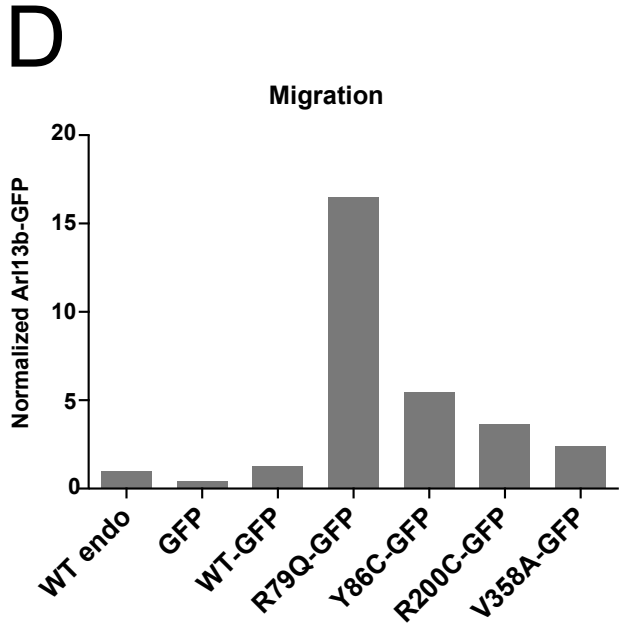
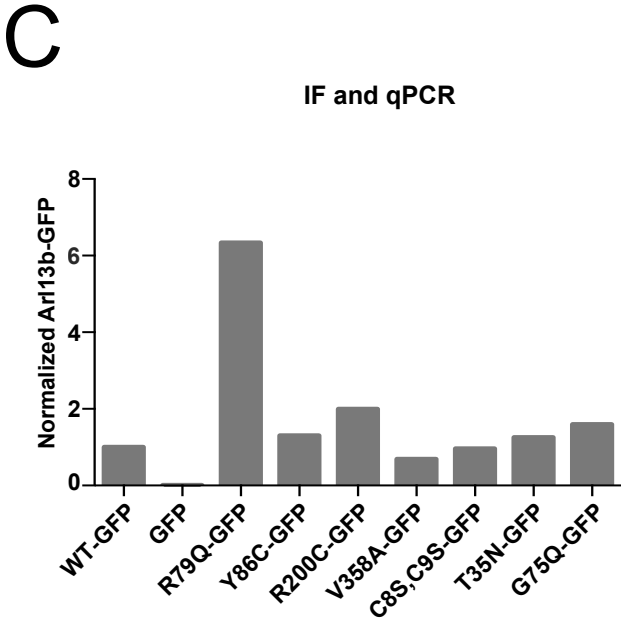
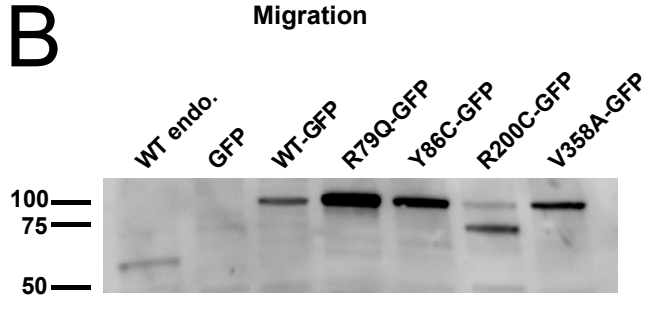
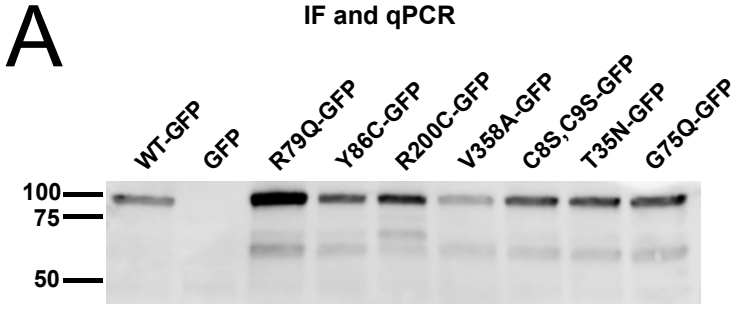


# Supplemental Materials

*Molecular Biology of the Cell*

Mariani et al.



**Supplemental Figure 1:** Western analysis of *Arl13b*<sup>hmm</sup> MEF lysates expressing Arl13b-GFP mutants. **(A and C)** Representative Western blot **(A)** and its quantification **(C)** of MEF lysates from the lines analyzed for Shh target gene expression (Fig 3) and ciliary Smo enrichment (Fig 4). **(B and D)** Representative Western blot **(B)** and its quantification **(D)** of MEF lysates from the lines analyzed for Shh-dependent migration. Arl13b-GFP runs at 100 kDa; endogenous Arl13b runs at 60 kDa. Mutant levels were normalized to Arl13b-GFP level.