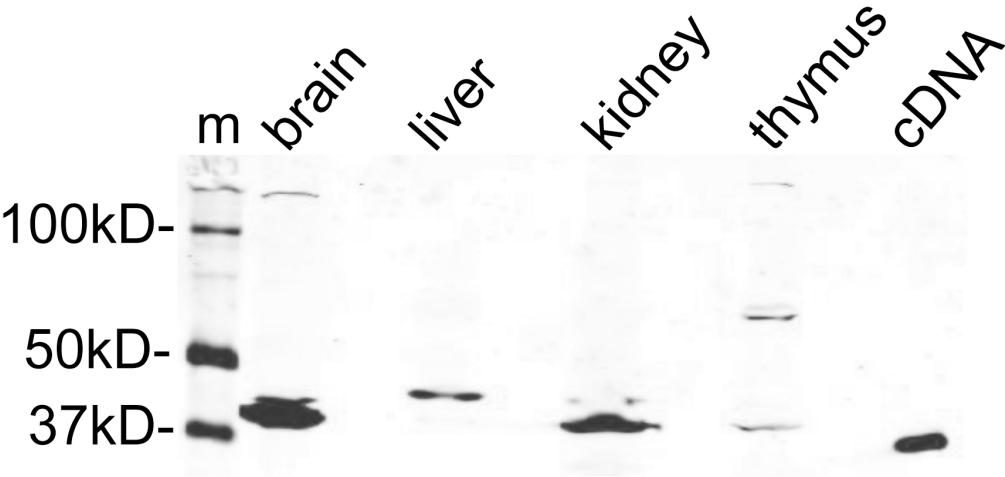


# Supplemental Materials

*Molecular Biology of the Cell*

Li et al.

Supplementary Information



**Figure S1. Western blot analysis of sNxf1 expression in lysates from mouse tissue.** Each lane contained extracts of the indicated mouse tissue. The blot was developed using an antibody raised against the unique 18-residue peptide sequence found within intron 10.