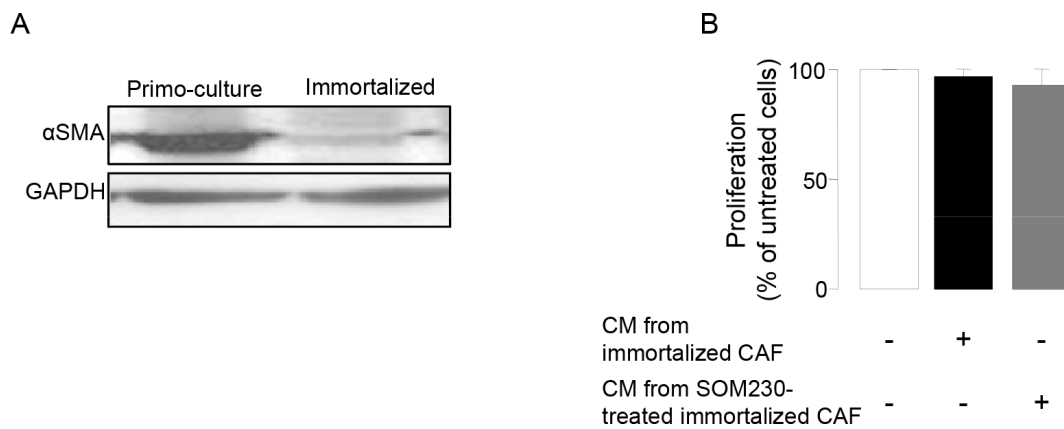
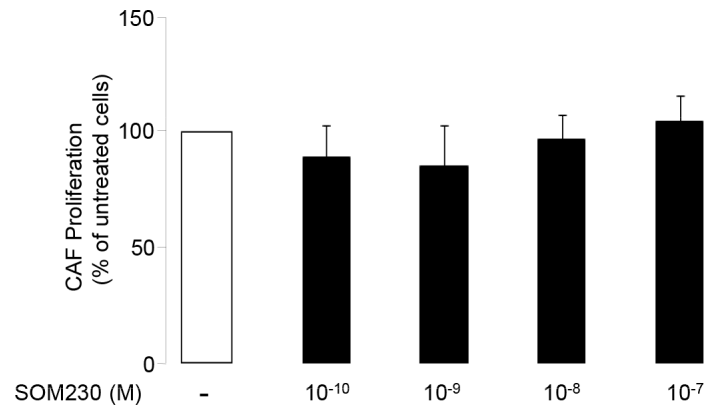


## Anti-metastatic potential of somatostatin analog SOM230: Indirect pharmacological targeting of pancreatic cancer-associated fibroblasts

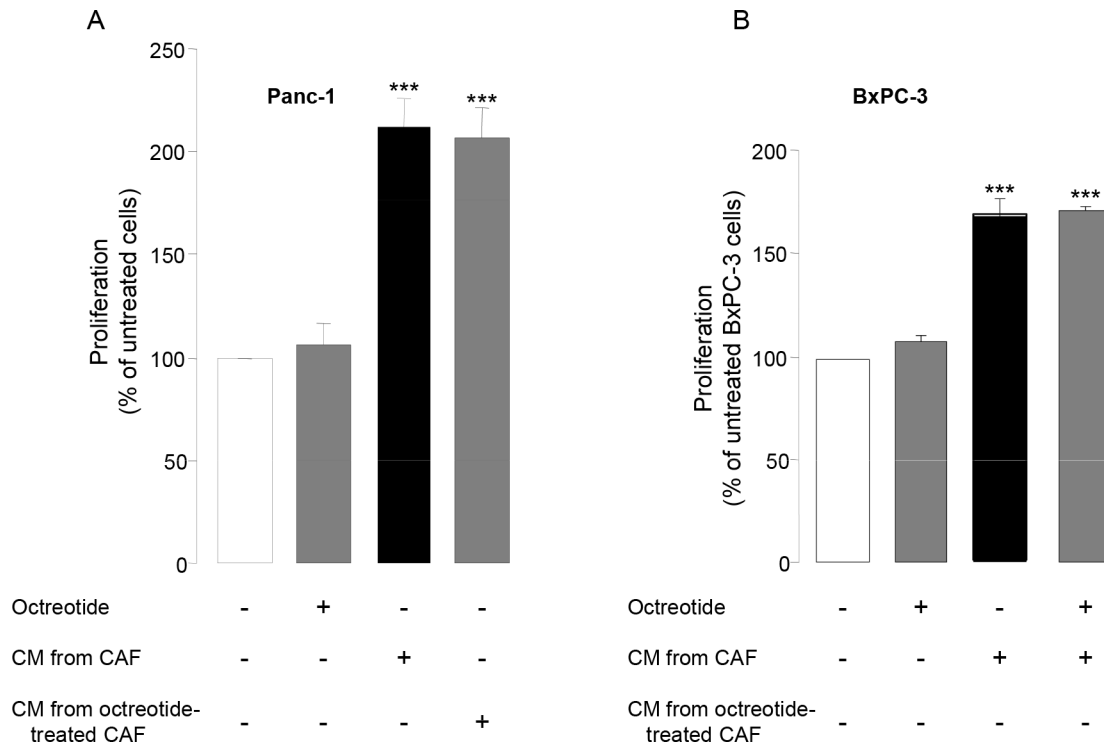
### SUPPLEMENTARY FIGURES



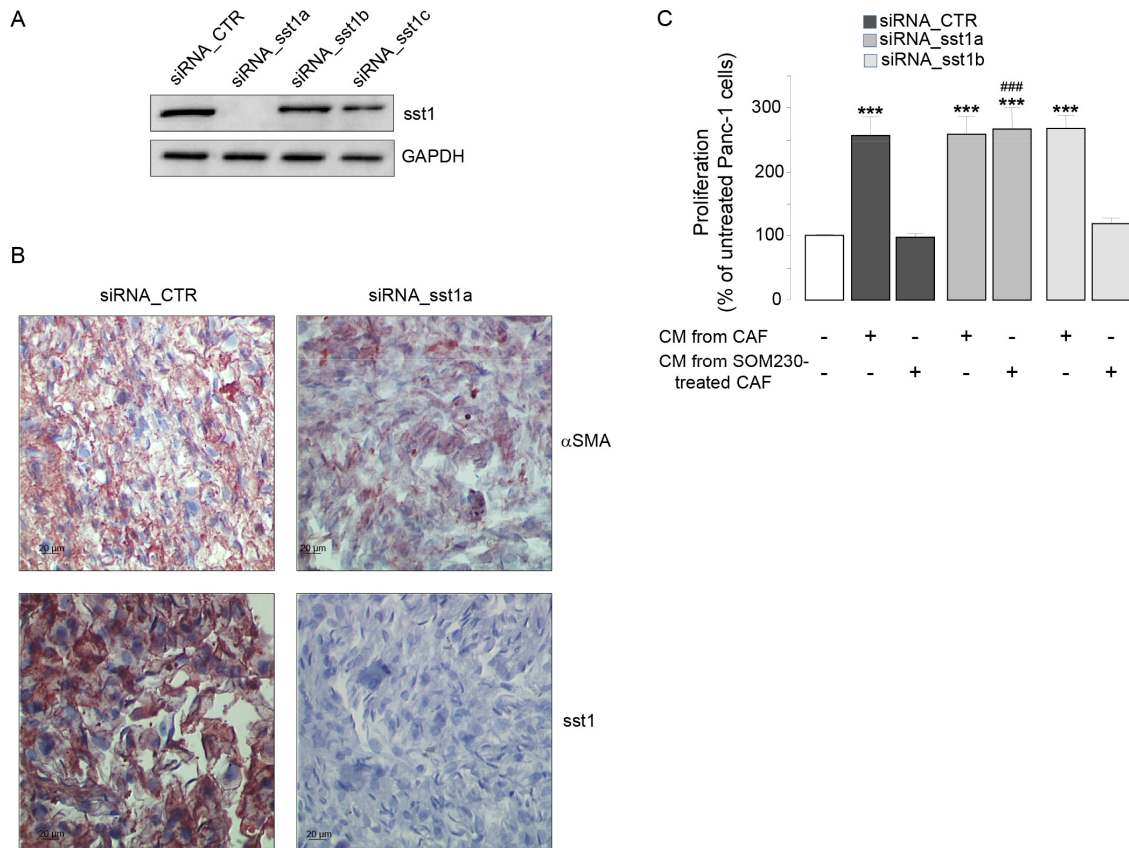
**Supplementary Figure S1: CAFs immortalized through overexpression of hTERT.** **A.** Immunoblotting using an anti- $\alpha$ SMA or GAPDH (loading control) antibody of protein extracts from a primary culture of CAFs or from immortalized CAFs. **B.** Panc-1 cell viability was assessed by MTT. Cells were incubated in the presence of CM from immortalized CAFs treated or not with SOM230. Results are presented as a percentage of the survival observed in the condition where cancer cells were not exposed to CAF CM (=100%) (n=3).



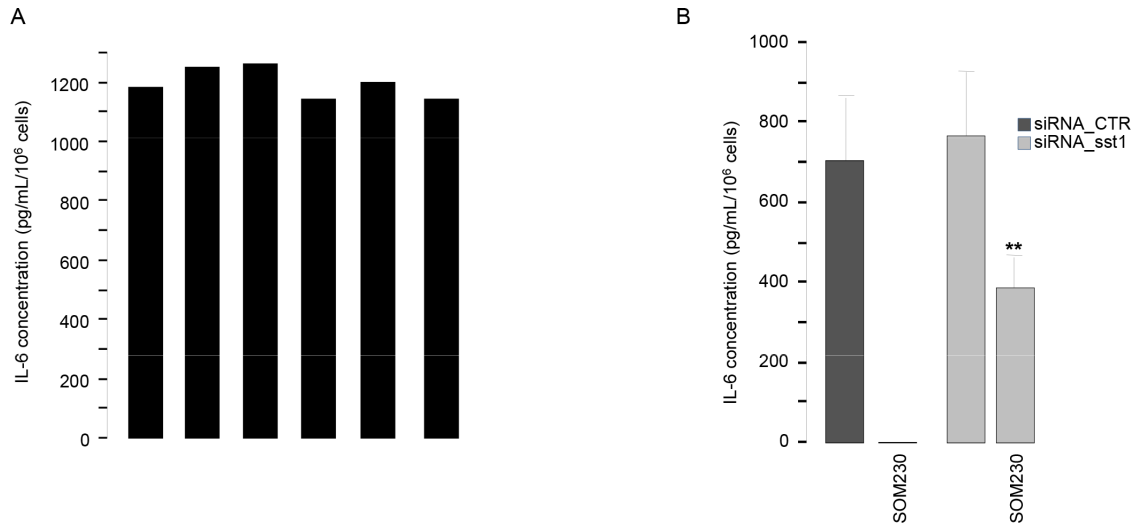
**Supplementary Figure S2: CAF viability was assessed by MTT.** Cells were treated or not for 48 h with SOM230 (10<sup>-10</sup> - 10<sup>-7</sup> M).



**Supplementary Figure S3: CAFs were treated or not with octreotide ( $10^{-8}M$ ) for 48 h.** Conditioned media (CM) were collected. Pancreatic cancer cells (Panc-1, **A.**, or BxPC-3, **B.**) were incubated with the indicated CM, and cell viability was assessed by MTT. Results are presented for each treatment as a percentage of untreated cells (=100%) (n=3). \*: effect of treatment vs. untreated cells.



**Supplementary Figure S4:** **A.** Immunoblotting using anti-sst1 or GAPDH (loading control) antibody of protein extracts from CAFs transfected with siRNA targeting sst1 (siRNA\_sst1a, or siRNA\_sst1b, or siRNA\_sst1c) or control (siRNA\_CTR) (representative of n=3). **B.** Immunohistochemistry analysis using an anti- $\alpha$ SMA or -sst1 antibody in paraffin-embedded CAFs transfected with siRNA-CTR or siRNA-sst1a. **C.** Panc-1 cell viability was assessed by MTT. Cells were incubated in the presence of CM from untreated or SOM230-treated CAFs transfected with the siRNA\_CTR or siRNA\_sst1a or siRNA\_sst1b. Results are presented as a percentage of the survival observed in the condition where cancer cells were not exposed to CAF CM (=100%) (n=3). \*: effect of treatment vs. untreated cells; #: siRNA\_CTR vs. siRNA\_sst1.



**Supplementary Figure S5: A, B.** ELISA assay for IL-6 in the conditioned media from six different primary cultures of CAFs **A.**, or from CAFs transfected with the siRNA\_CTR or siRNA\_sst1a, and treated or not with SOM230 (n=3) **B.** \*: siRNA\_CTR vs. siRNA\_sst1.