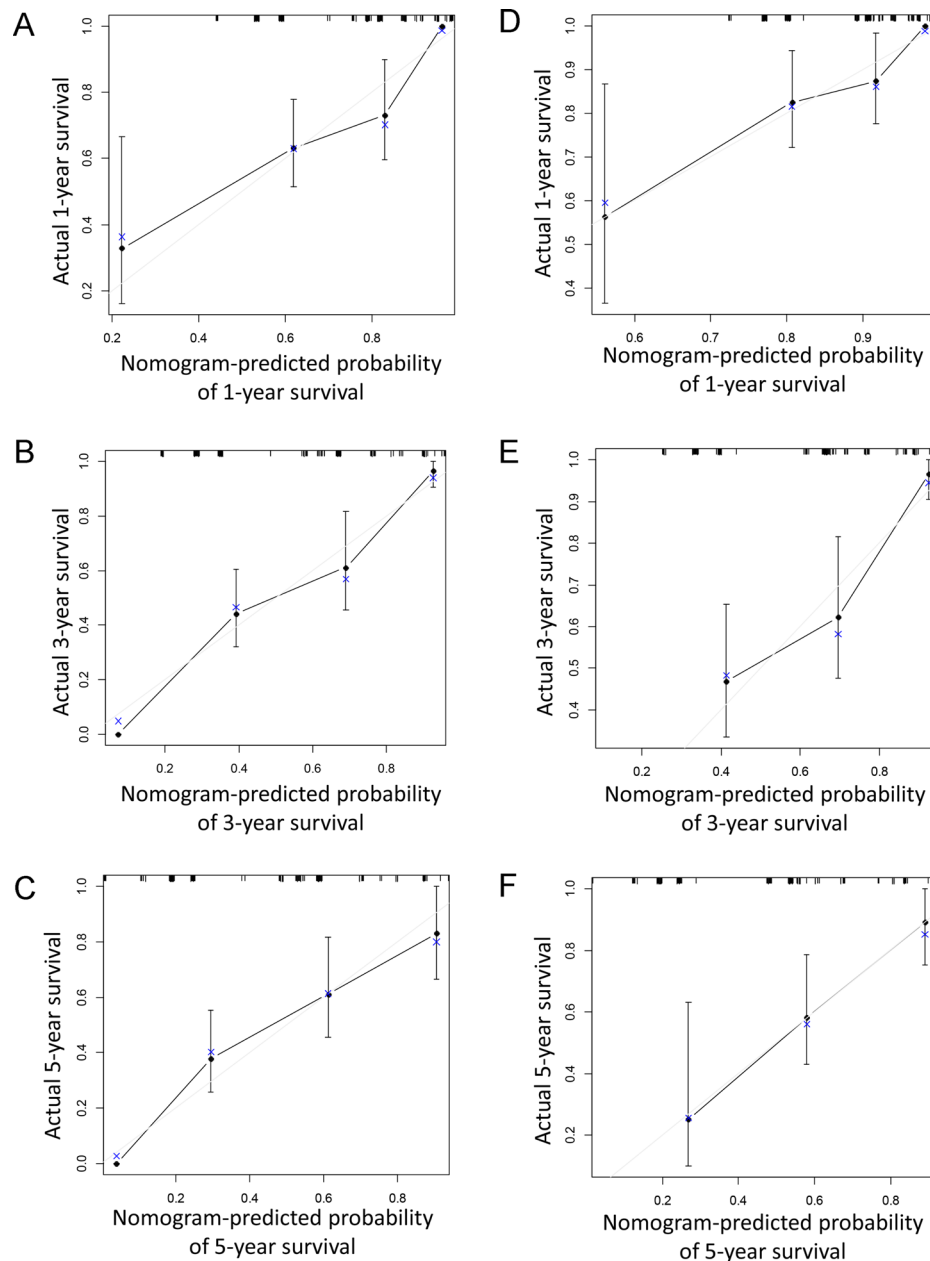


## A novel predictive model based on preoperative blood neutrophil-to-lymphocyte ratio for survival prognosis in patients with gastric neuroendocrine neoplasms

### Supplementary Materials



**Supplementary Figure S1: The calibration curve for predicting patients recurrence-free survival and overall survival at 1 year (A and D), 3 years (B and E) and 5 years (C and F). Nomogram-predicted probability of overall survival is plotted on the x-axis; actual overall survival is plotted on the y-axis.**