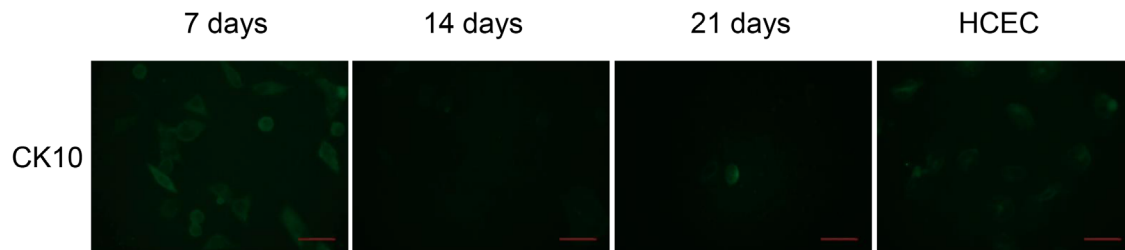
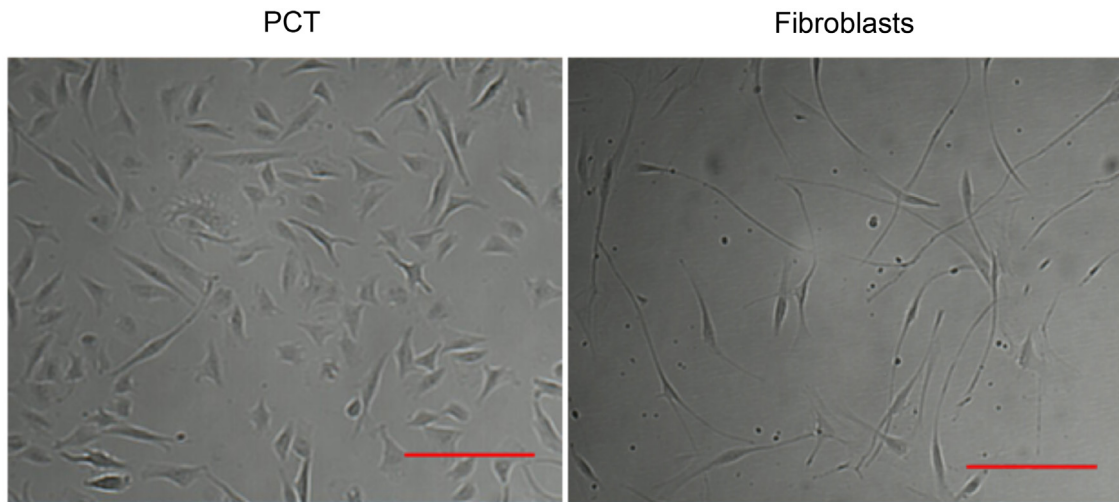


Human induced pluripotent stem cell differentiation and direct transdifferentiation into corneal epithelial-like cells

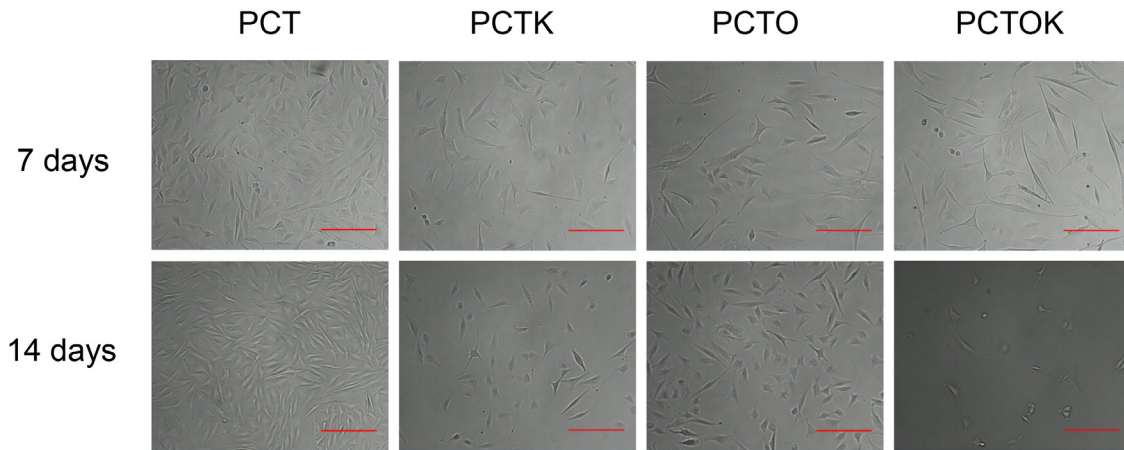
SUPPLEMENTARY FIGURES



Supplementary Figure S1: Differentiation of iPS cells to the corneal epithelial lineage. Immunocytochemical analysis for expression of CK10 at day 7, day 14 and day 21. Scale bar: 50 μ m.



Supplementary Figure S2: Comparison between untreated fibroblasts and fibroblasts directly transdifferentiated into corneal epithelial lineage. Bright field images of transdifferentiated cells 7 days post infection with PCT and untreated fibroblasts. Scale bar: 200 μ m.



Supplementary Figure S3: Fibroblasts directly transdifferentiated into corneal epithelial lineage for 7 and 14 days. Bright field images of transdifferentiated fibroblasts 7 and 14 days post infection either with PCT, PCTK, PCTO or PCTOK. Scale bar: 200 μm .