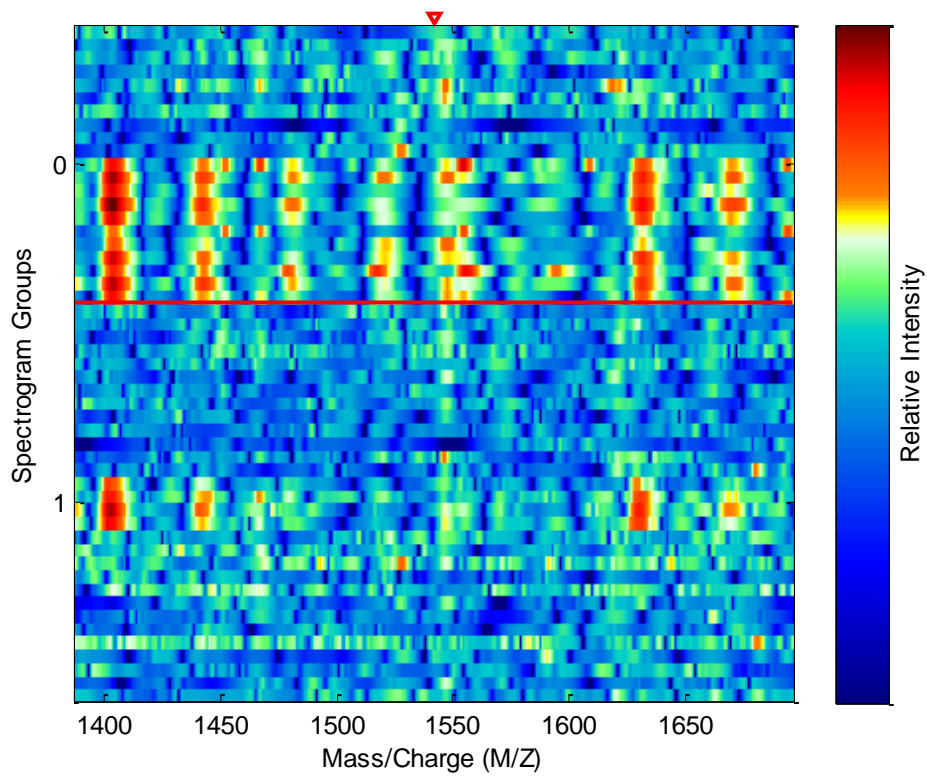
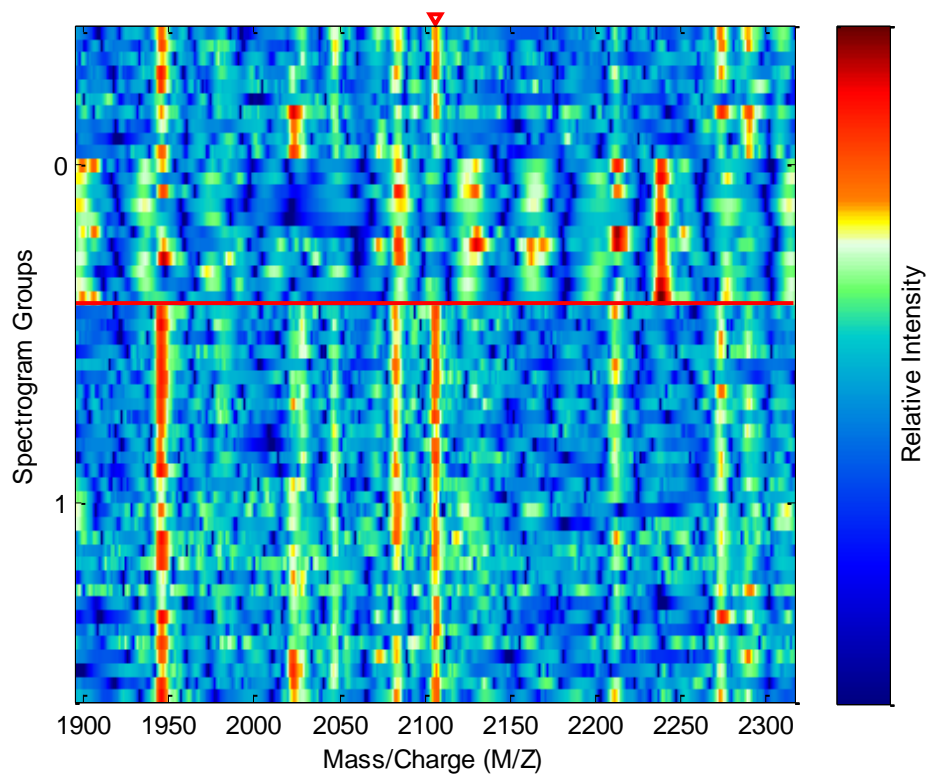


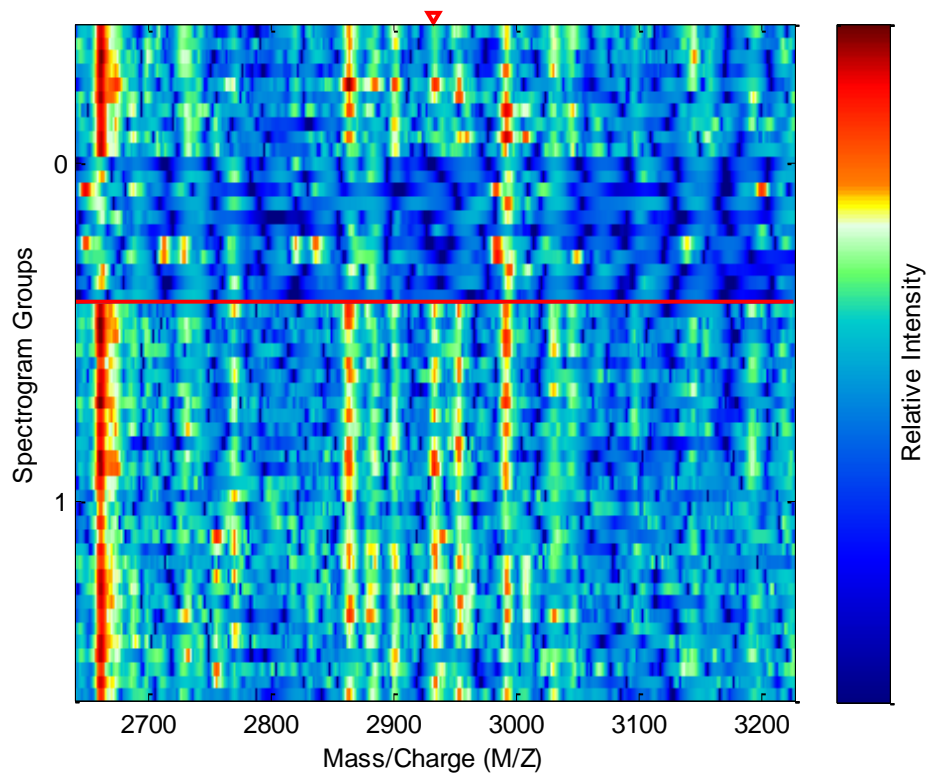
Biomarkers Principal Component Scatter Plot
 Group 1: Crohn's disease patients, group 0: Intestinal tuberculosis patients



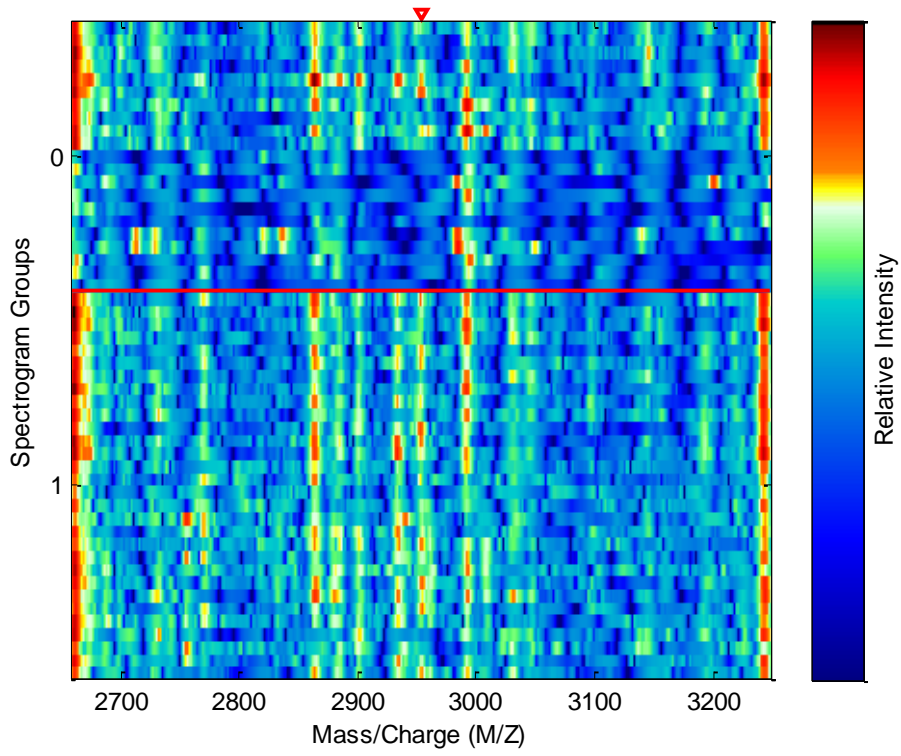
Gel figure: M/Z 1541



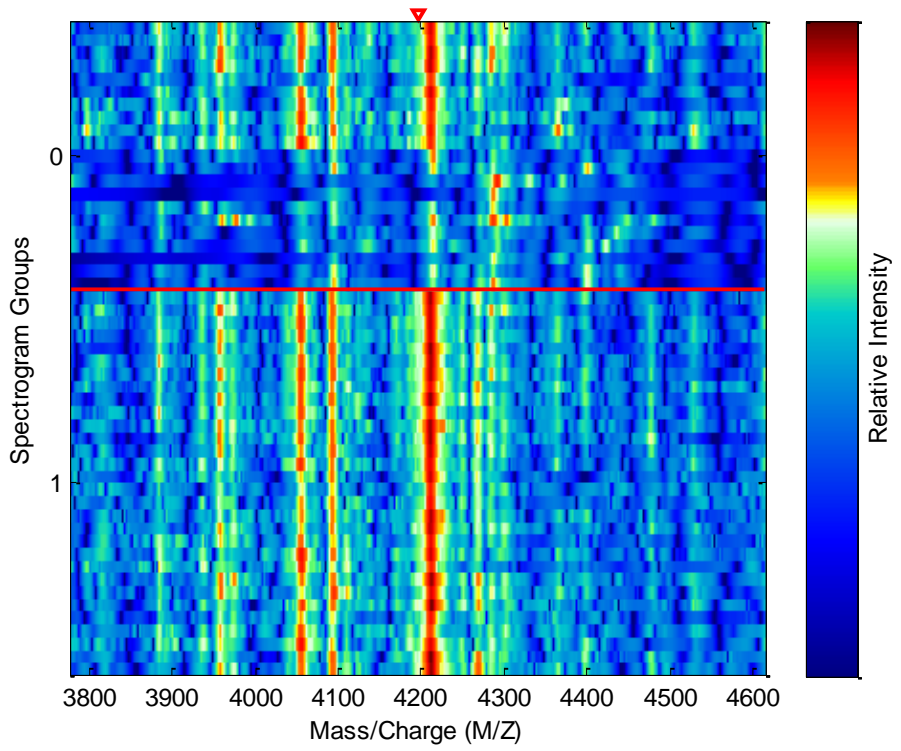
Gel figure: M/Z 2105



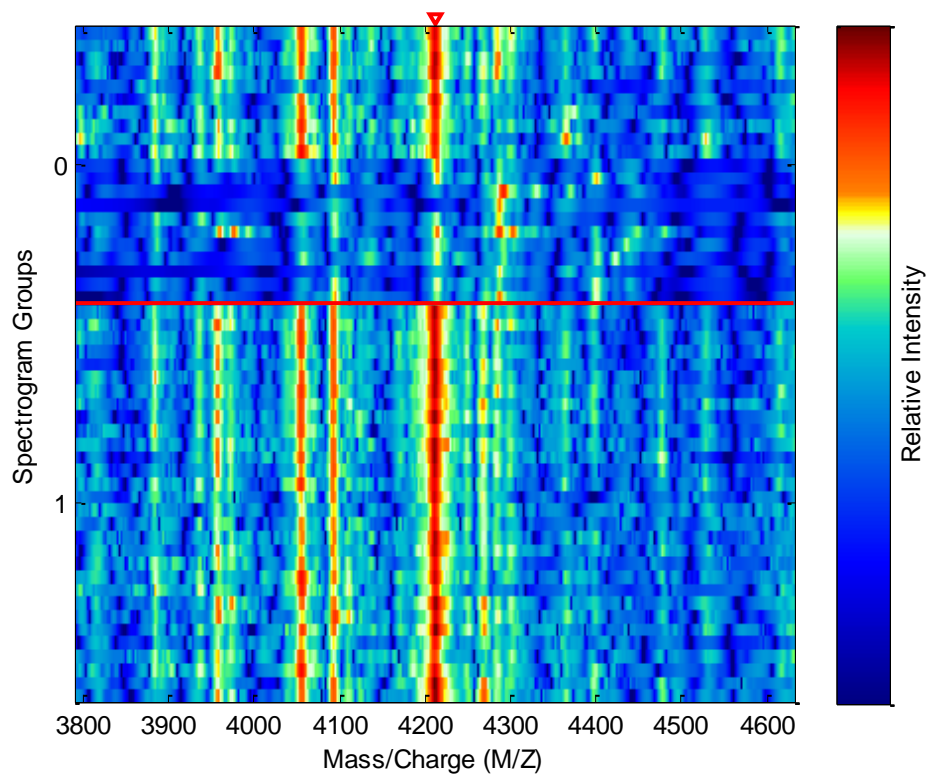
Gel figure: M/Z 2933



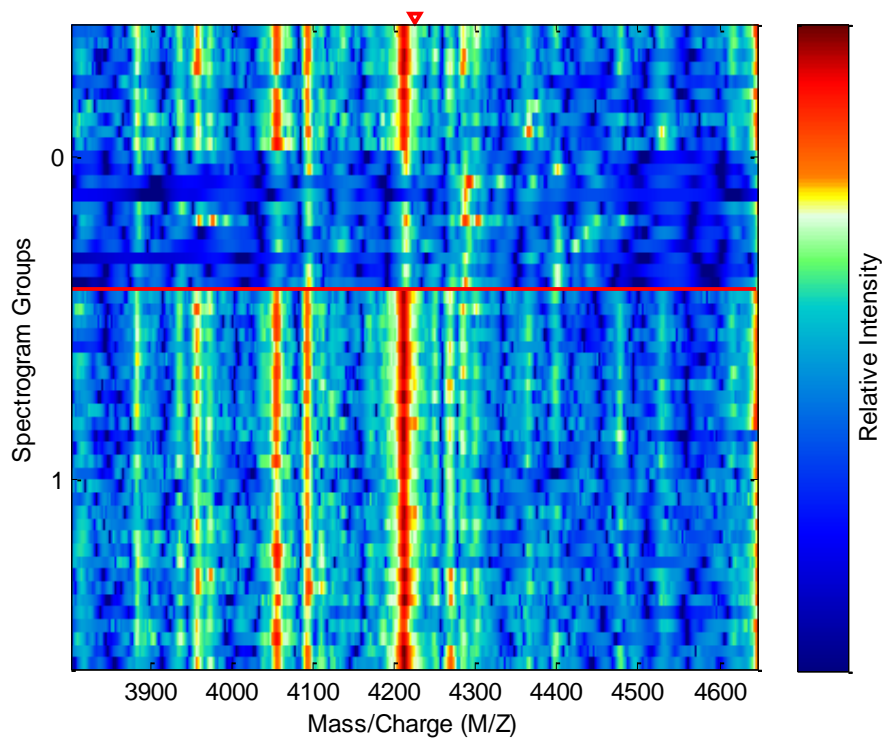
Gel figure: M/Z 2952



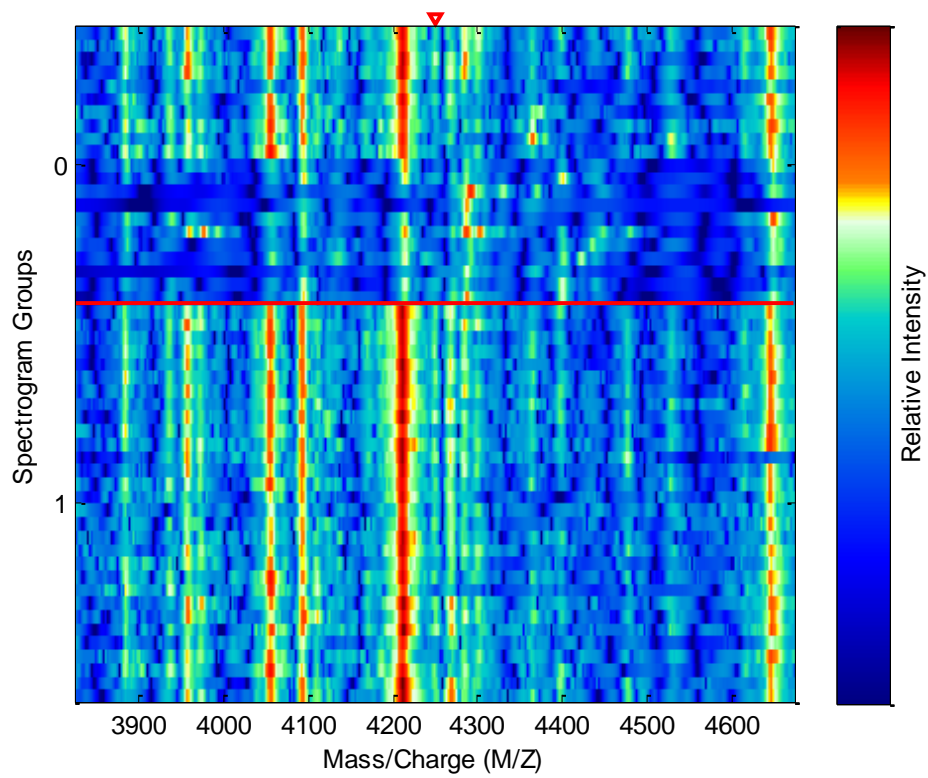
Gel figure: M/Z 4195



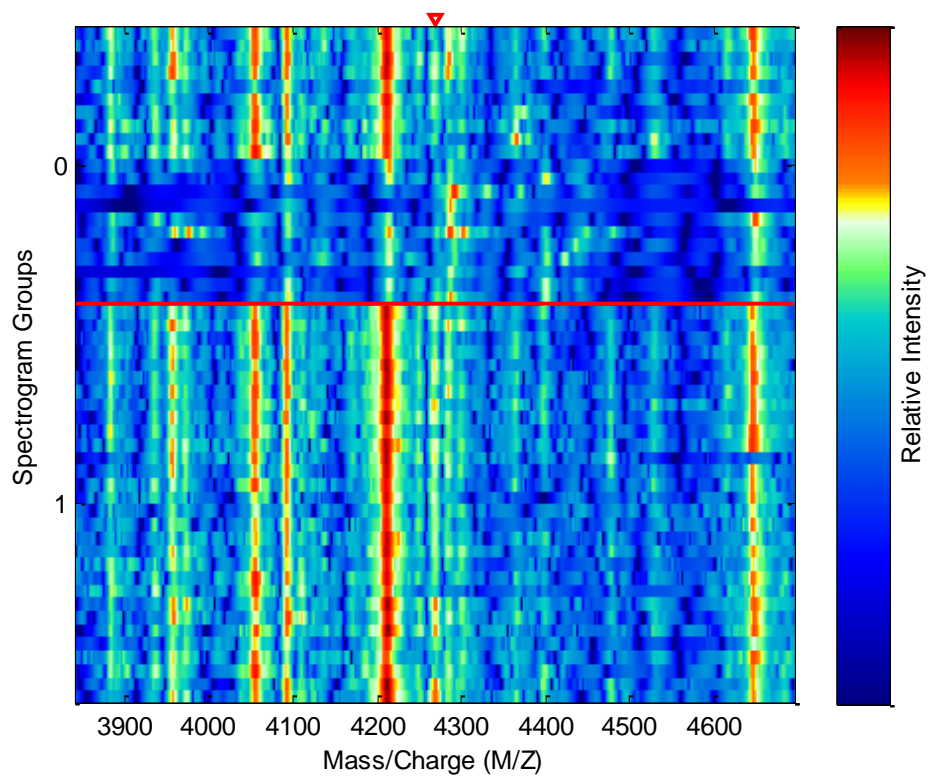
Gel figure: M/Z 4210



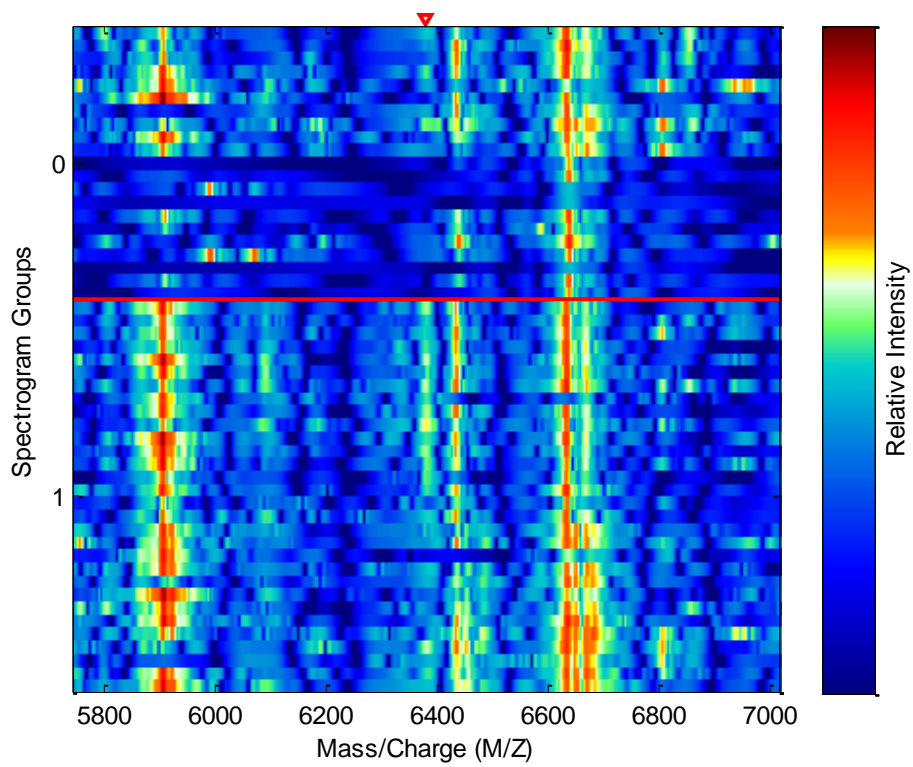
Gel figure: M/Z 4223



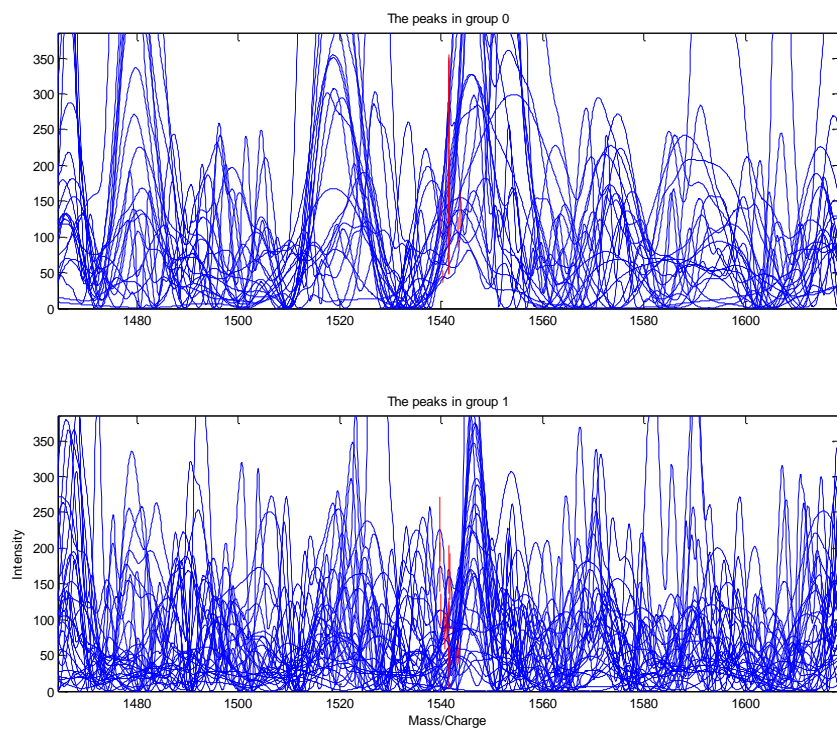
Gel figure: M/Z 4248



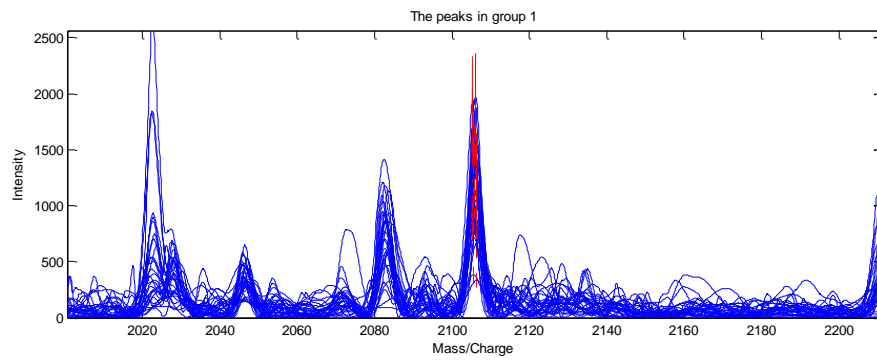
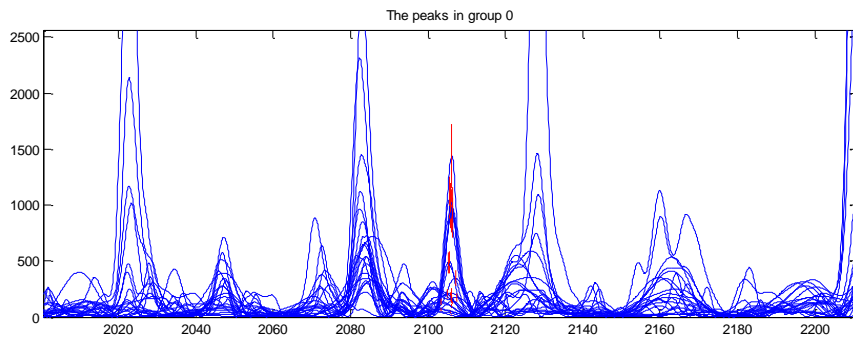
Gel figure: M/Z 4267



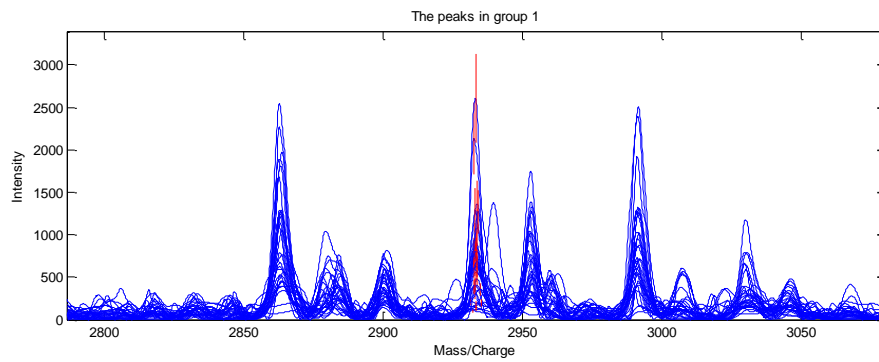
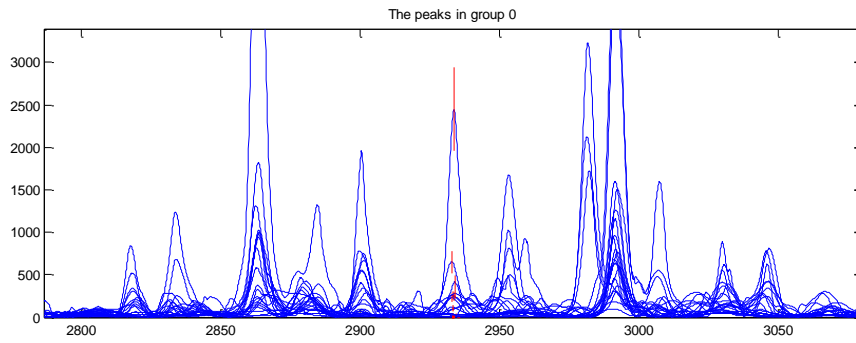
Gel figure: M/Z 6380



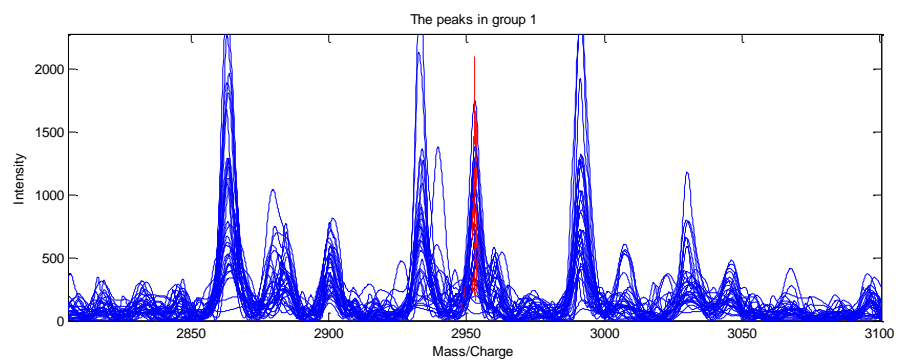
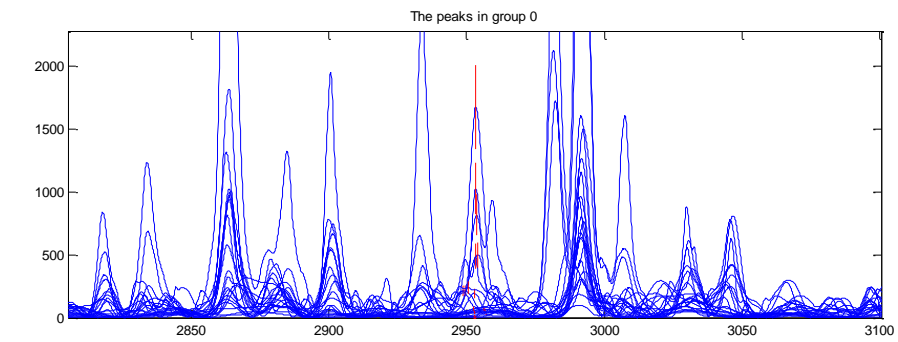
Peak figure: M/Z 1541



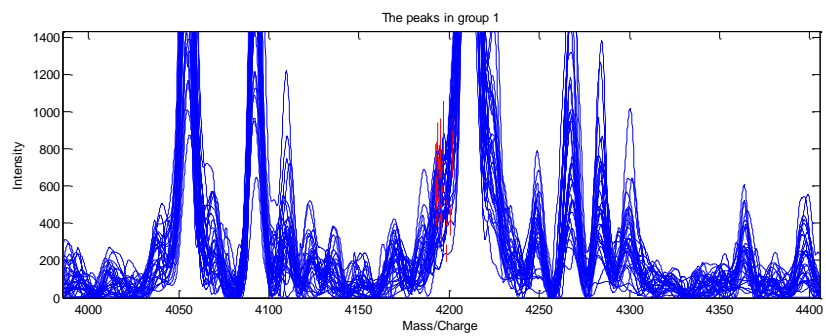
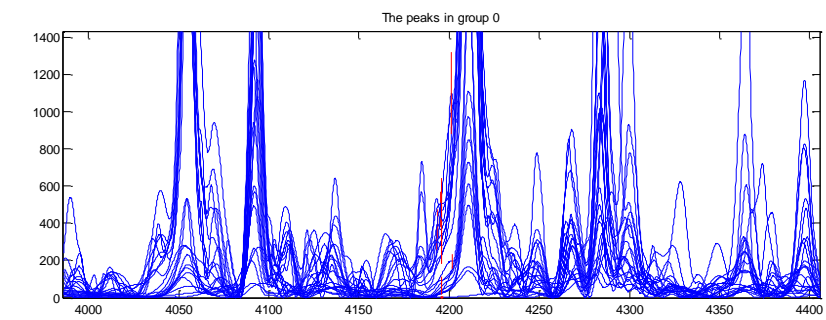
Peak figure: M/Z 2105



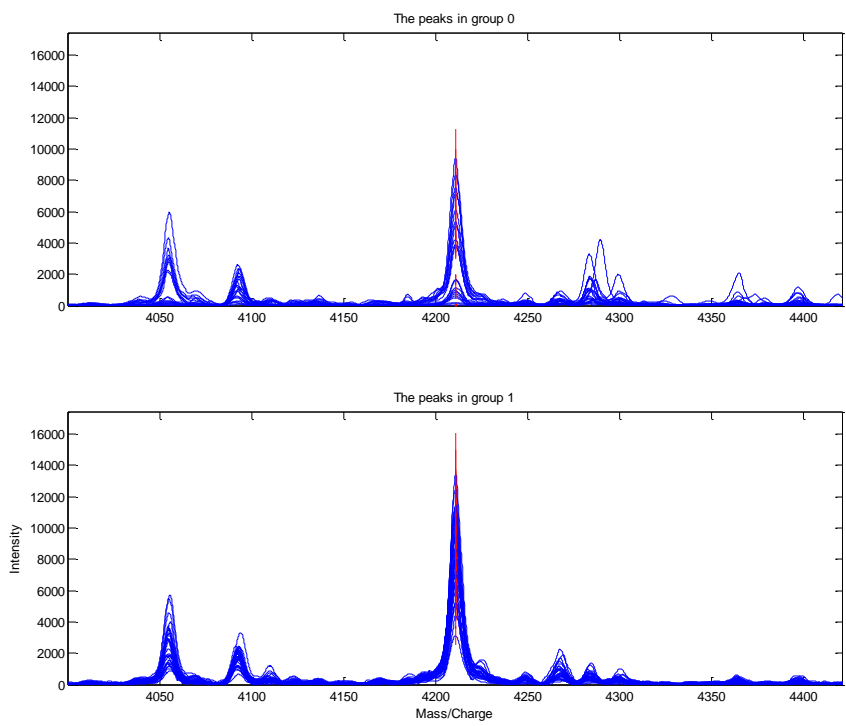
Peak figure: M/Z 2933



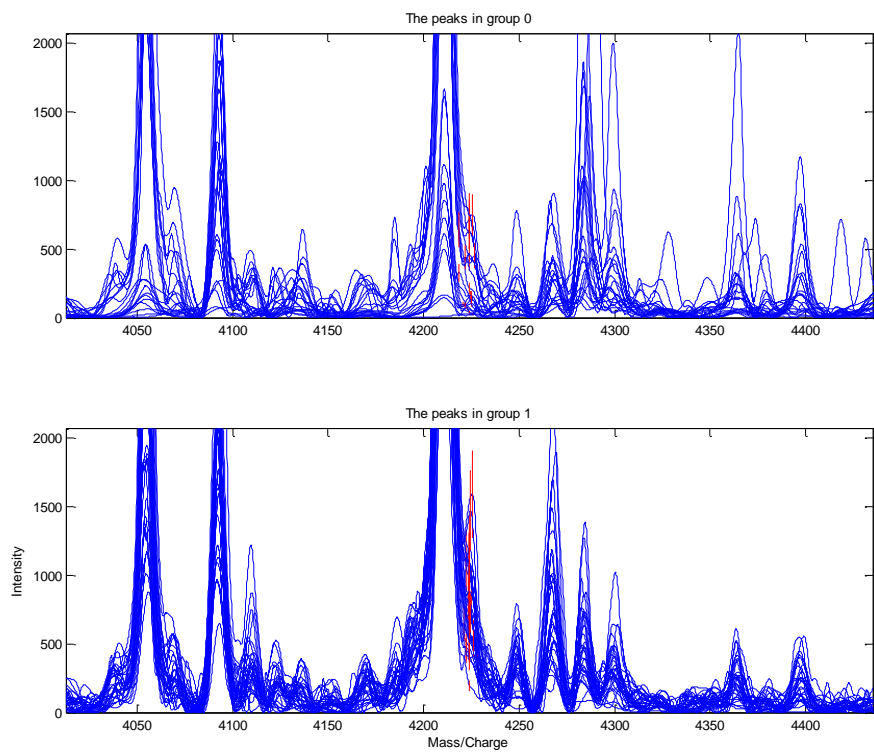
Peak figure: M/Z 2952



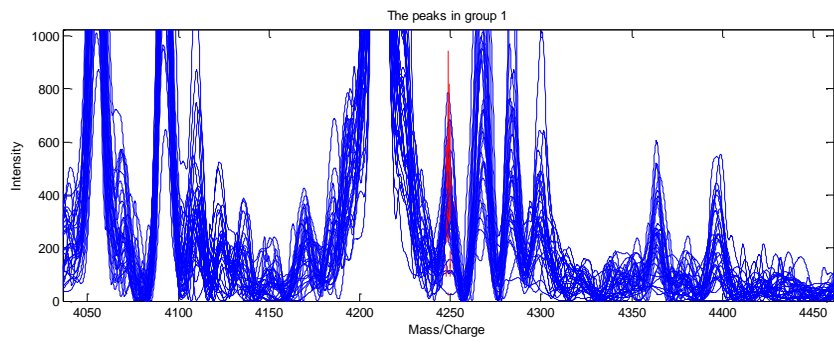
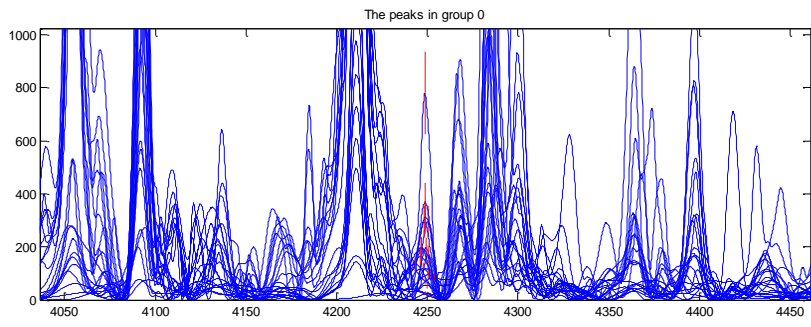
Peak figure: M/Z 4195



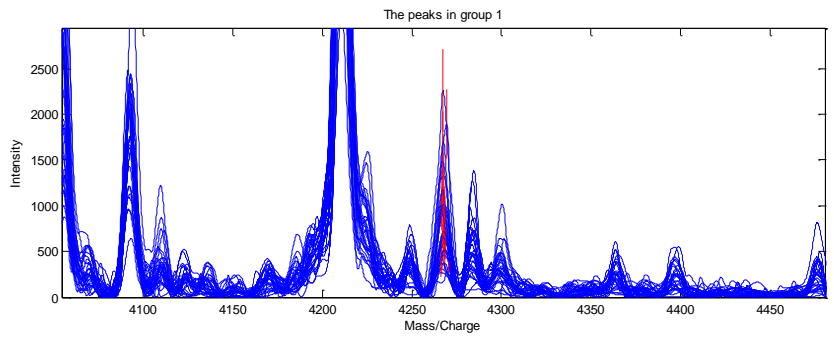
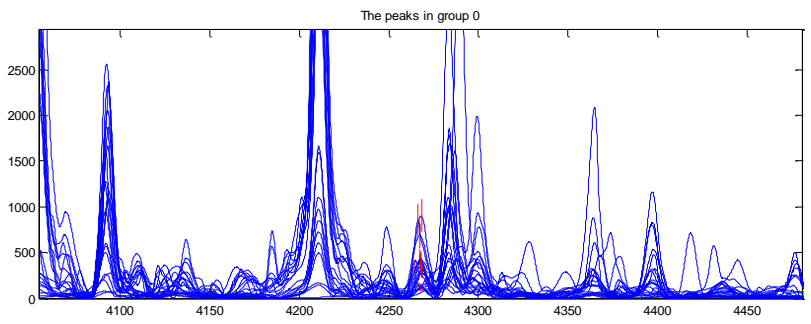
Peak figure: M/Z 4210



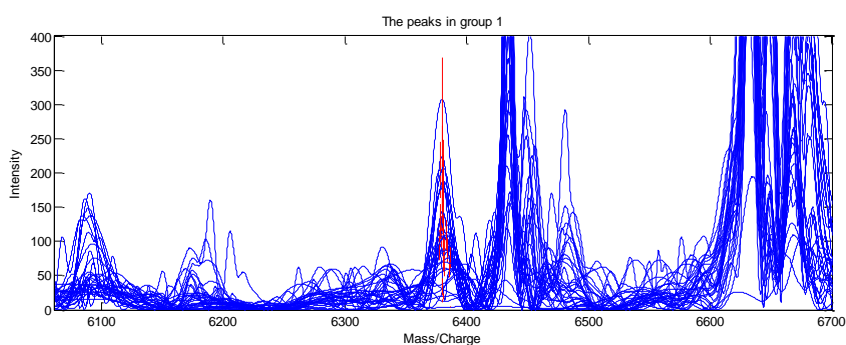
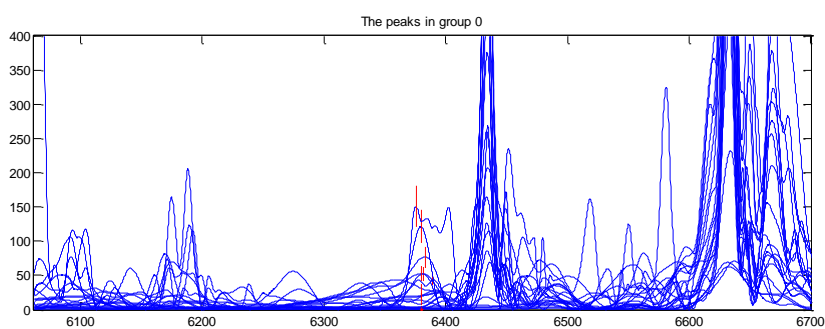
Peak figure: M/Z 4233



Peak figure: M/Z 4248



Peak figure: M/Z 4267



Peak figure: M/Z 6380

User Name zy2016 Peaks filtering factor Wilcoxon
 Repeat Sample 0 Small Size Sample No
 Test sample percent 0.3 Batch Analyze 1
 Wavelet threshold 100 Smoothing window 100
 Calibration coefficient (%)0.03 Minimal M/Z (%) 1000
 Cluster factor (%) 0.003 Minimal peak threshold (%) 0.1
 Excluded spectra threshold (%) 0.2 Minimal sinal/noise ratio (%) 2
 Minimal intensity 300 P value or Number of peaks 10
 Algorithm 1 Evaluation 1
 GA population 50 GA generation 20

Training result

	Predicted Class 0	Predicted Class 1	Sum	Accuracy (%)	Error (%)
Class 0	18	3	21	85.7143	14.2857
Class 1	2	28	30	93.3333	6.6667

Validation result

	Predicted Class 0	Predicted Class 1	Sum	Accuracy (%)	Error (%)
Class 0	16	5	21	76.1905	23.8095
Class 1	6	24	30	80	20

selected markers is

4267.7998 4223.9247 1541.5624

Biomarker M/Z

4210.7588 4195.7477 4267.7998 2105.8038 2933.4035

4223.9247 6380.9606 2952.8616 4248.7848 1541.5624

P value or Weight

3.4639e-006 5.0034e-006 6.568e-006 7.8604e-006 7.8604e-006

1.2241e-005 1.7336e-005 6.5941e-005 7.147e-005 9.8287e-005

Mean in Class0

3291.1052 239.9033 335.8663 433.0916 237.3828

326.9949 30.1196 276.083 178.0915 153.4355

Mean in Class1

8342.1784 558.4655 853.9418 1185.5369 734.2254

787.9001 108.6418 681.8899 382.4116 .3677

Std in Class0

3046.6524 265.5924 234.2178 428.4893 533.9402

266.3362 41.3966 425.8328 172.3976 77.424

Std in Class1

2548.3934 159.1813 489.673 417.3648 572.2113

329.382 72.4131 416.5696 173.1632 56.1958