

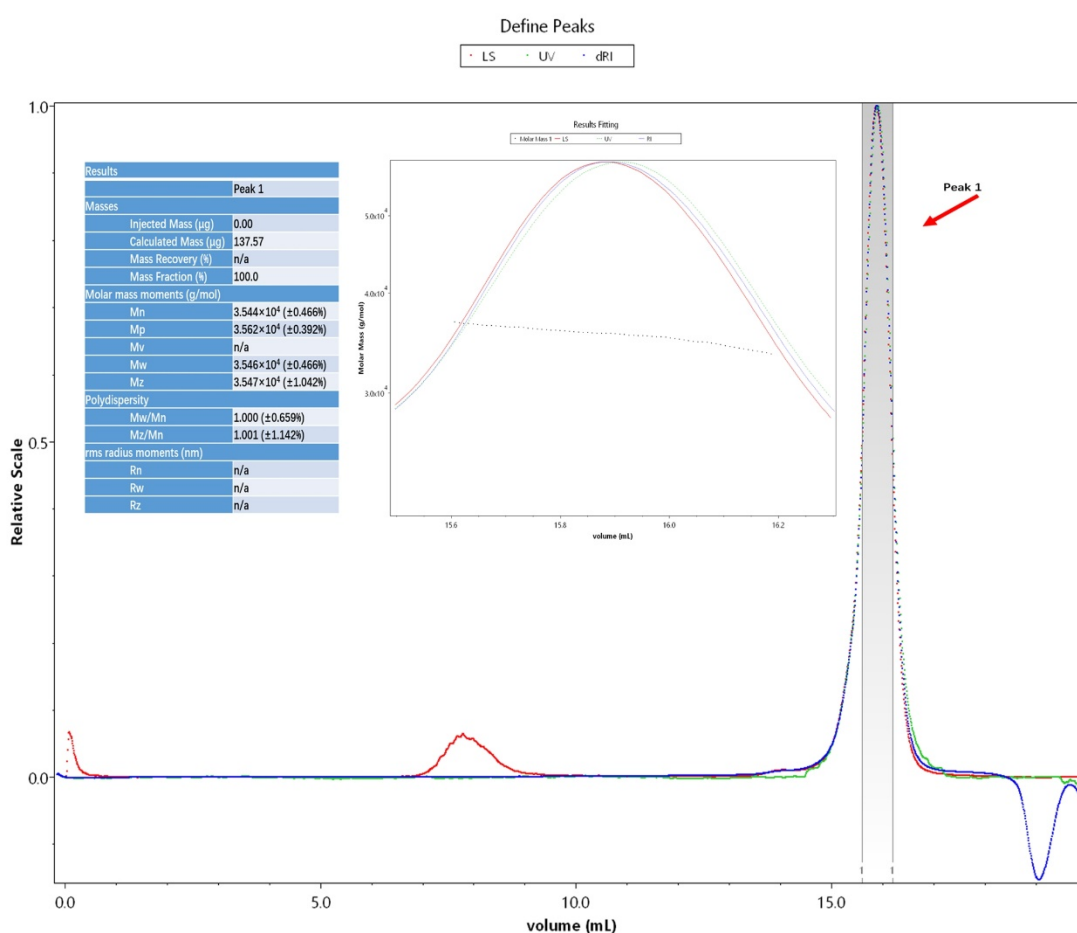
# High resolution crystal structure of the catalytic domain of MCR-1

Guixing Ma<sup>1</sup>, Yifan Zhu<sup>1</sup>, Zhicheng Yu<sup>1</sup>, Ashfaq Ahmad<sup>1</sup>, Hongmin Zhang<sup>1\*</sup>

<sup>1</sup>Department of Biology and Shenzhen Key Laboratory of Cell Microenvironment,  
Southern University of Science and Technology, Shenzhen 518055, China.

\*Correspondence should be addressed to Hongmin Zhang

( [hongmin\\_zhang@foxmail.com](mailto:hongmin_zhang@foxmail.com) )



**Supplementary Figure 1. Multi-angle light scattering of MCR-1C.** Red arrow showed peak 1 of MCR-1C, and the insert table listed the parameters for peak 1. The average molecular weight is about 35.46kD, which suggests MCR-1C to be monomer.