

## Supplementary Information

### Hematopoietic Stem Cells in Neural-crest Derived Bone Marrow

Nan Jiang<sup>1,2,3</sup>, Mo Chen<sup>2</sup>, Guodong Yang<sup>2</sup>, Lusai Xiang<sup>2,4</sup>, Ling He<sup>2,4</sup>, Thomas K. Hei<sup>5</sup>,  
Gregory Chotkowski<sup>2</sup>, Dennis P. Tarnow<sup>6</sup>, Myron Finkel<sup>2</sup>,  
Lei Ding<sup>7</sup>, Yanheng Zhou<sup>1\*</sup>, Jeremy J. Mao<sup>2,4\*</sup>

<sup>1</sup>Department of Orthodontics, Peking University School and Hospital of Stomatology  
22 Zhongguancun Avenue South, Haidian District, Beijing 100081, P.R. China

<sup>2</sup>Columbia University Medical Center, Center for Craniofacial Regeneration (CCR)  
630 W. 168 St., New York, NY 10032, USA

<sup>3</sup>Central Laboratory, Peking University School and Hospital of Stomatology,  
22 Zhongguancun Avenue South, Haidian District, Beijing 100081, China

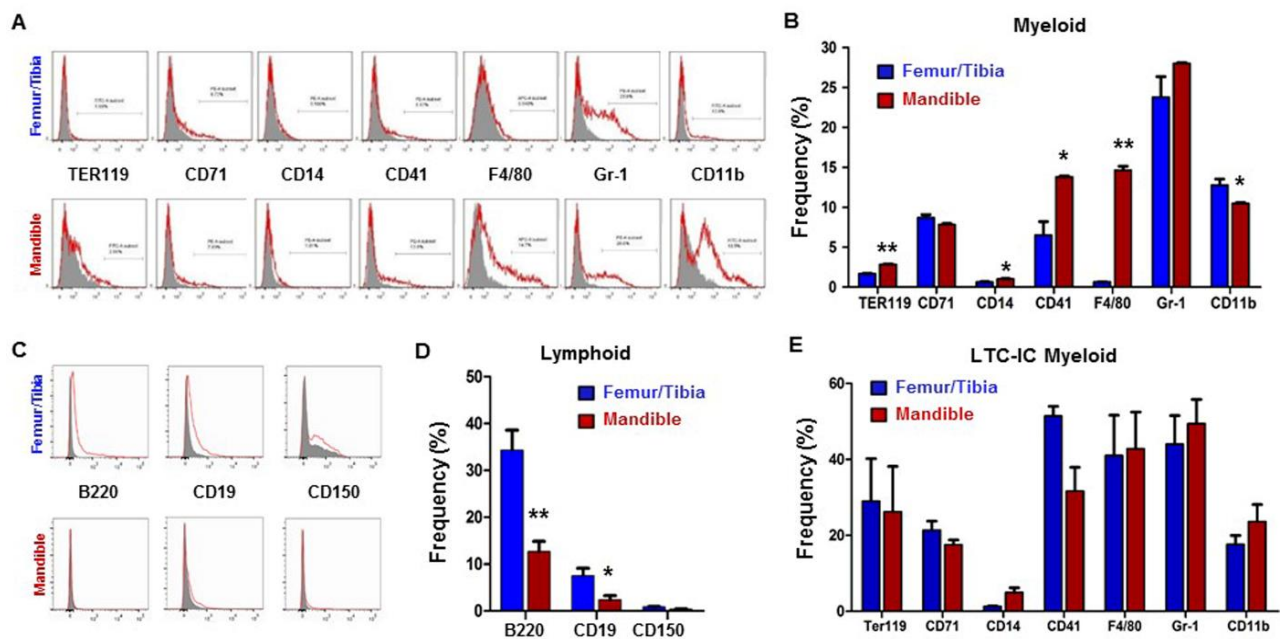
<sup>4</sup>Guanghua School of Stomatology, Hospital of Stomatology, Sun Yat-sen University  
56 Lingyuanxi Road, Guangzhou 510055, China

<sup>5</sup>Department of Radiation Oncology, College of Physician and Surgeons  
Columbia University Medical Center, 630 W. 168 St., New York, NY 10032, USA

<sup>6</sup>Division of Periodontics, College of Dental Medicine, Columbia University Medical Center  
630 W. 168 St., New York, NY 10032, USA

<sup>7</sup>Departments of Microbiology & Immunology and Rehabilitation & Regenerative Medicine  
630 W. 168 St., New York, NY 10032, USA

**Supplementary Figure S1. Flow cytometry profiles were shown for analysis of CD34<sup>-</sup>LSK cells differentiation in M3434 and M3630.** (A) Flow cytometry of differentiated colonies for myeloid markers. (B) Significant increases of Ter119, CD14, CD41 and F4/80 (mean  $\pm$  s.d., n=3, \*p<0.05, \*\*p<0.01, t-tests). (C) Flow cytometry of differentiated lymphoid colonies. (D) Significant decrease of B220 and CD19 (mean  $\pm$  s.d., n=3, \*p<0.05, \*\*p<0.01, t-tests). (E) Flow cytometry for analysis of LTC-IC myeloid differentiation in M3434. (mean  $\pm$  s.d., n=3, t-tests).



**Supplementary Figure S2. Selected enriched pathways femur/tibia vs. mandible with statistical significance.** The  $-\log(P \text{ value})$  of the enrichment of each canonical pathway was plotted.

