

Supplemental Material for:

DbpA is a region-specific RNA helicase

*Anthony F.T. Moore, Riley C. Gentry, and Eda Koculi**

Department of Chemistry, University of Central Florida, 4111 Libra Dr., Physical
Sciences Bldg. Room 255, Orlando, FL 32816-2366, U.S.A.

*Corresponding author. Email: Eda.Koculi@ucf.edu; Phone: (407)823-5451

Figure 1. A) Electrophoretic mobility shift assay of construct A binding by wild-type DbpA. B) Electrophoretic mobility shift assay of construct A binding by extended DbpA. C) Stimulation of unwinding activity of wild-type DbpA by molecule A:X. D) Stimulation of unwinding activity of extended DbpA by molecule A:X.

Figure 2. A) The DNA map of the extended DbpA coding sequence and pET 3a vector. B) The DNA sequence and amino acid sequence of the peptide linker insert, native interdomain linker region, and DbpA regions flanking the interdomain linker region. The DNA coding the 23 amino acid insert is shown in lower case. The images in this figure were created with SnapGene (version 2.5, GSL Biotech LLC, Chicago, IL, USA).

Figure 3. The DNA map of the wild-type DbpA coding sequence and pET 3a vector. The map was created with SnapGene (version 2.5, GSL Biotech LLC, Chicago, IL, USA).

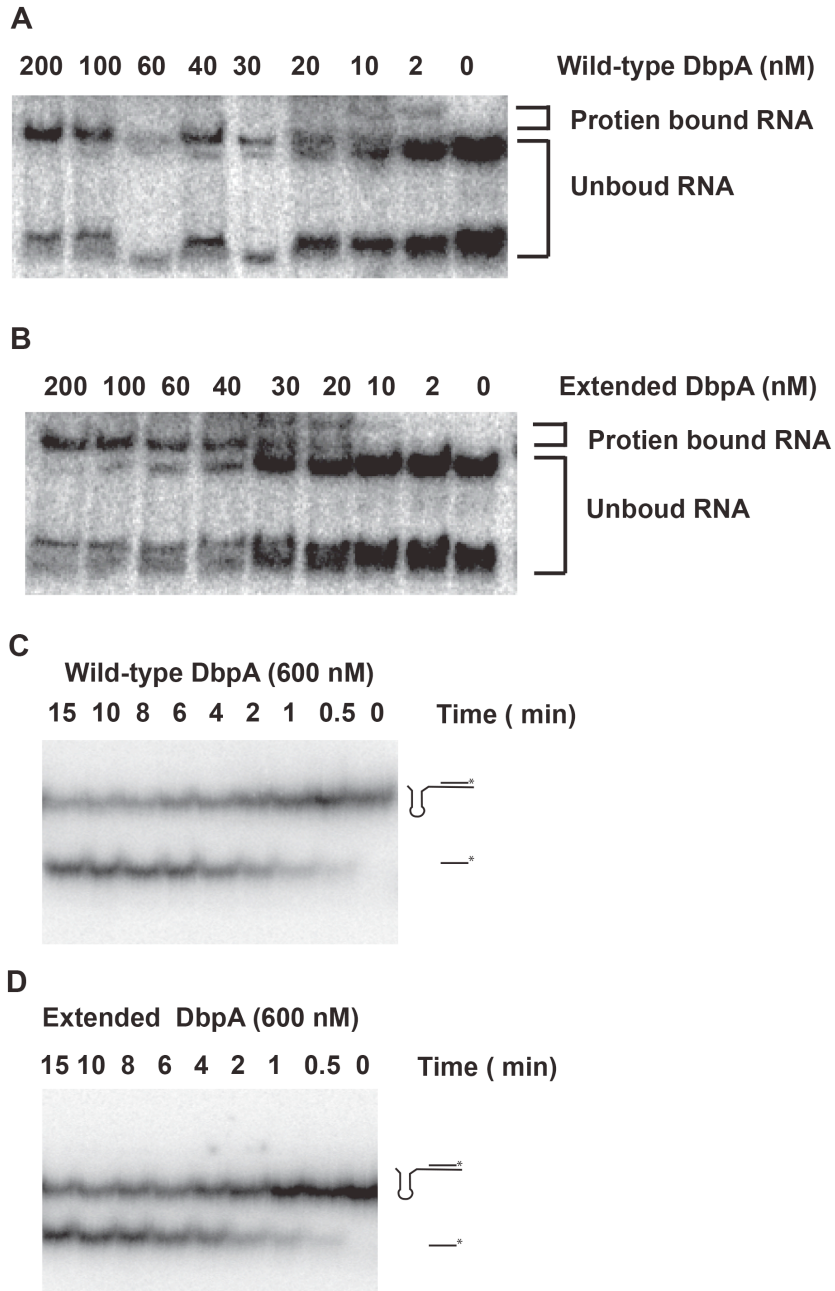


Figure S1

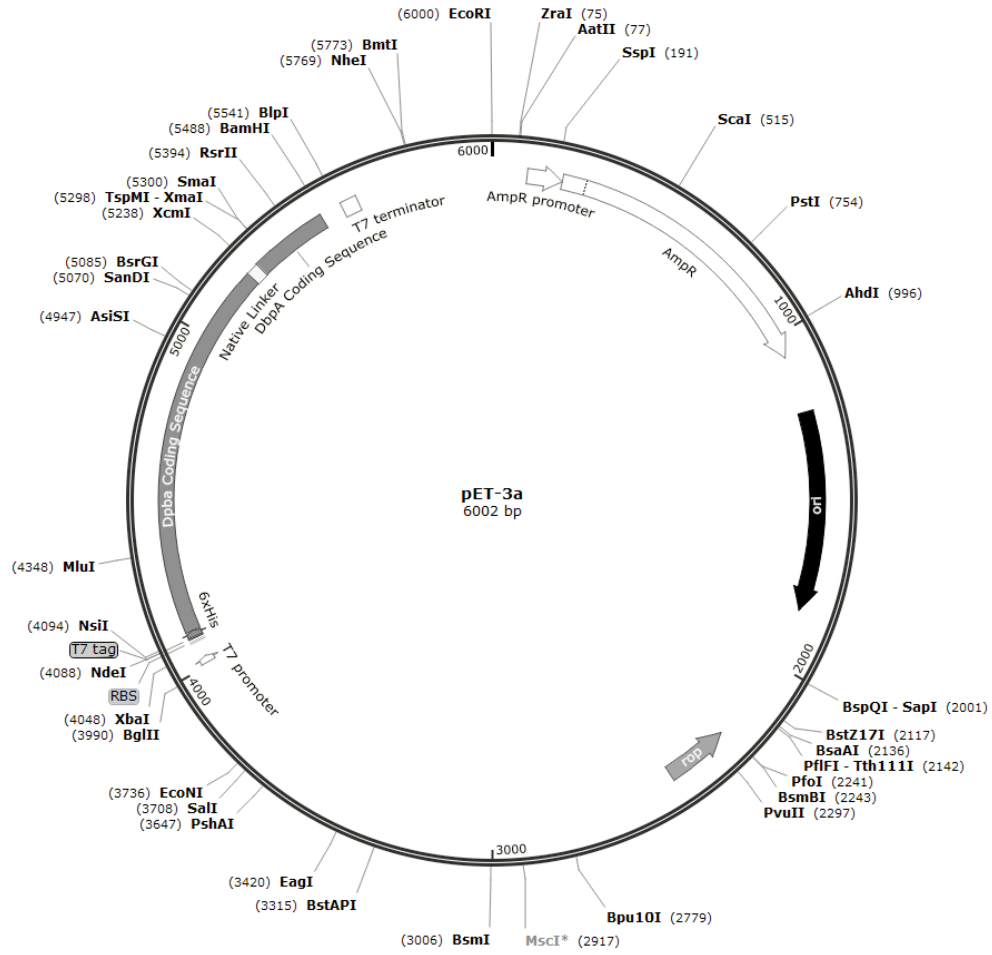


Figure S3