

Supplementary Materials: Knockdown of ELMO3 Suppresses Growth, Invasion and Metastasis of Colorectal Cancer

Hui-Yun Peng, Qiong-Fang Yu, Wei Shen, Cheng-Ming Guo, Zhen Li, Xiao-Yan Zhou, Nan-Jin Zhou, Wei-Ping Min and Dian Gao

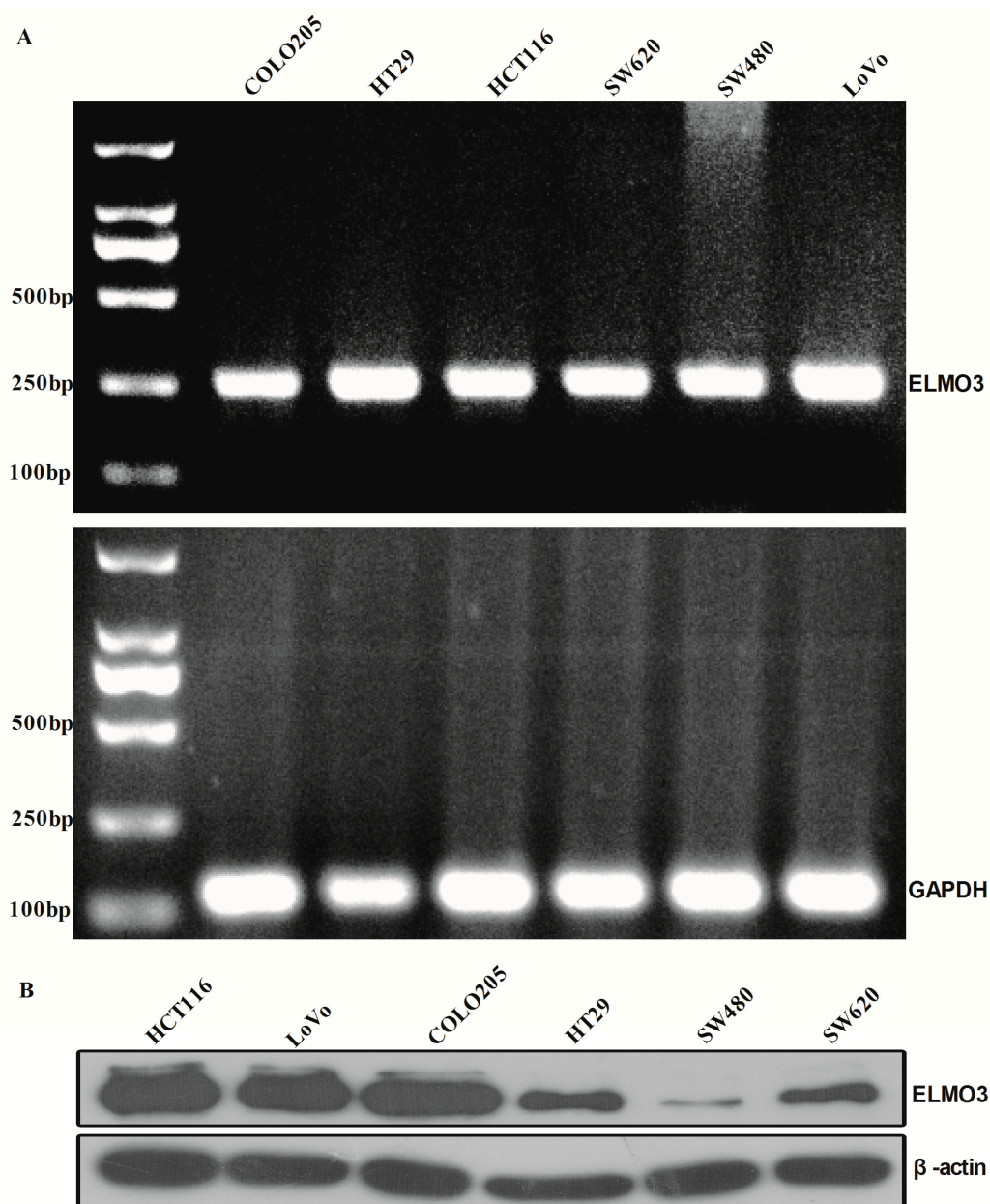


Figure S1. The mRNA and protein levels of ELMO3 in CRC cell lines. (A) RT-PCR was used to detect the mRNA level of ELMO3 and (B) Western blot analysis was used to determined protein level of ELMO3.