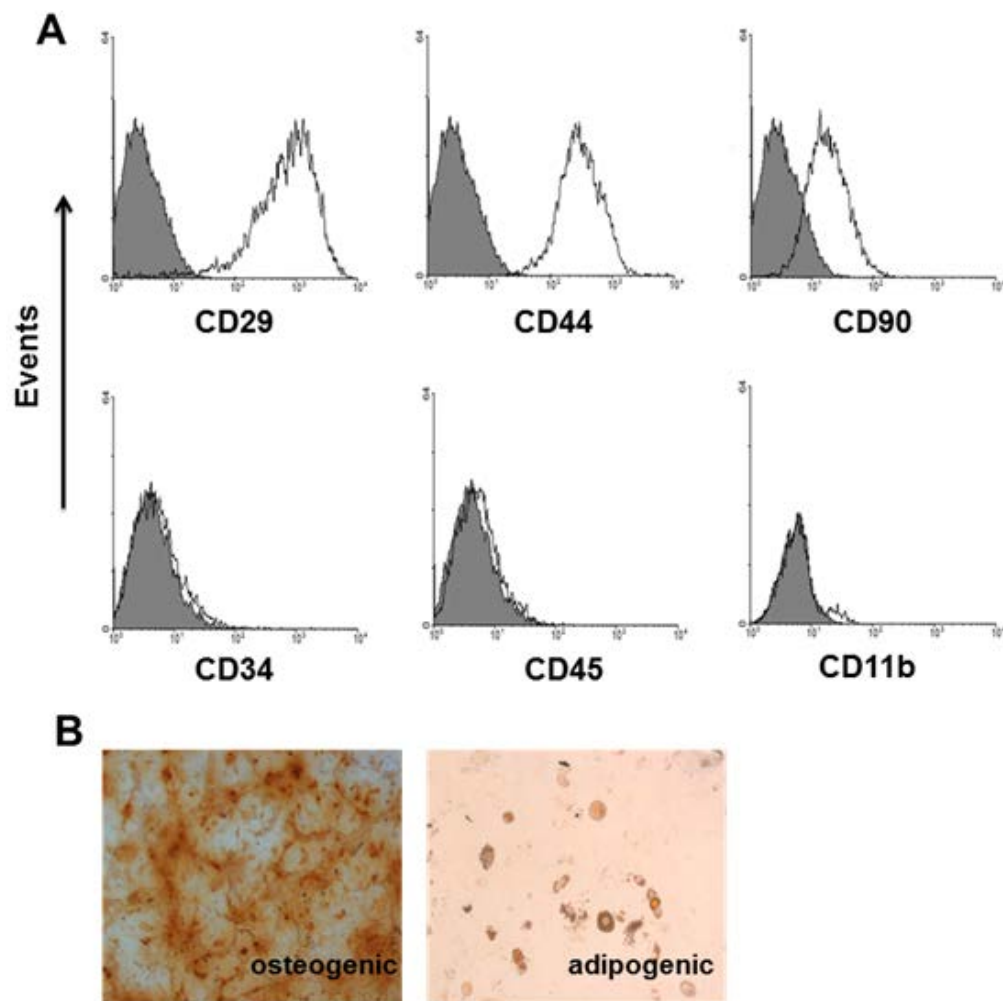


IL-17 down-regulates the immunosuppressive capacity of olfactory ecto-mesenchymal stem cells in collagen-induced arthritis

Supplementary Material



Supplementary Figure S1: Phenotypic and functional characterization of OE-MSCs. **A.** Flow cytometric analysis of surface-marker expression on OE-MSCs, including representative MSC markers CD29, CD44 and CD90, hematopoietic cell markers CD34 and CD45 and myeloid cell marker CD11b. **B.** OE-MSCs were

cultured in osteogenic/adipocytes conditions for 14/21 days, followed by alizarin red staining (left panel) or oil red O (right panel), respectively (original magnification \times 10). Results are representative of three independent experiments.