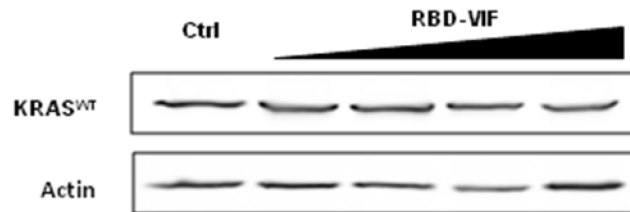
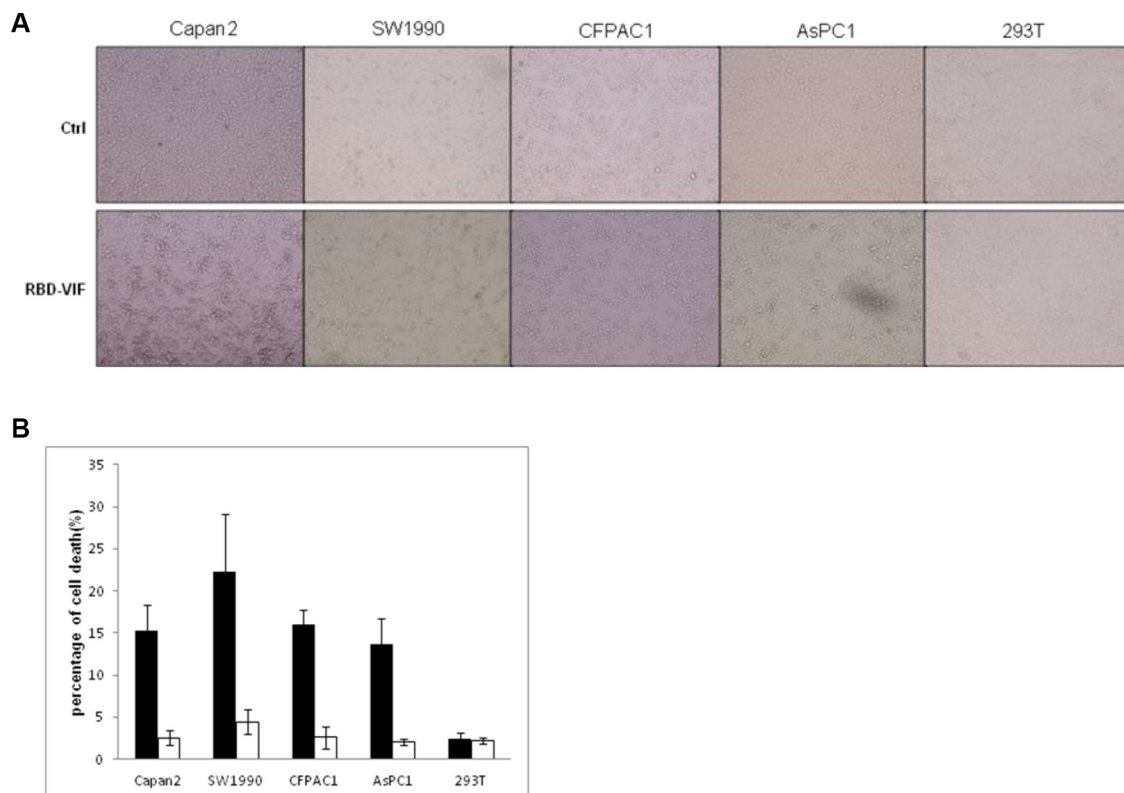


A recombinant chimeric protein specifically induces mutant KRAS degradation and potently inhibits pancreatic tumor growth

Supplementary Materials



Supplementary Figure S1: Chimeric proteins RBD-VIF has no effect on the degradation of wild-type KRAS. The wild-type KRAS plasmids were co-transfected with different doses of RBD-VIF plasmids into HEK293T cells, and the levels of KRAS were determined by western blotting after 48 h.



Supplementary Figure S2: Recombinant chimeric proteins induce cell death in many different mutant KRAS-expressing tumor cell lines. (A) The purified protein RBD-VIF was added to different cell cultures. After 48 h, cells were examined under microscope. (B) The percentage of cell death was evaluated by MTT assay, and mean \pm SEM is shown. Error bars indicate SEM.