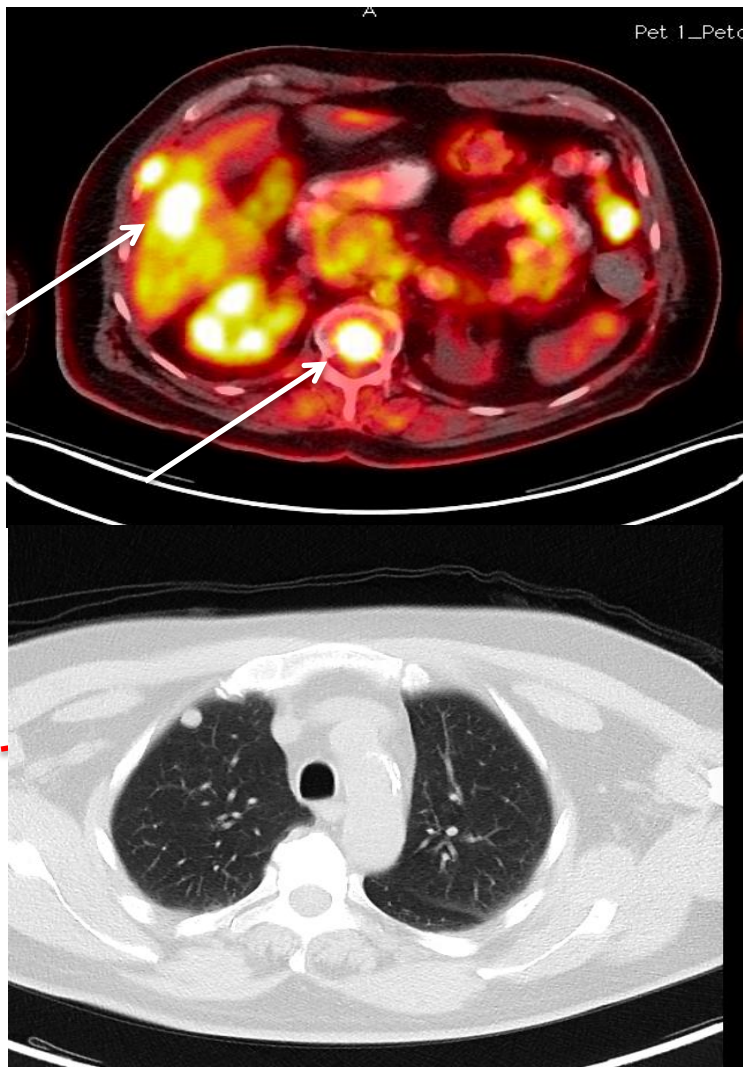


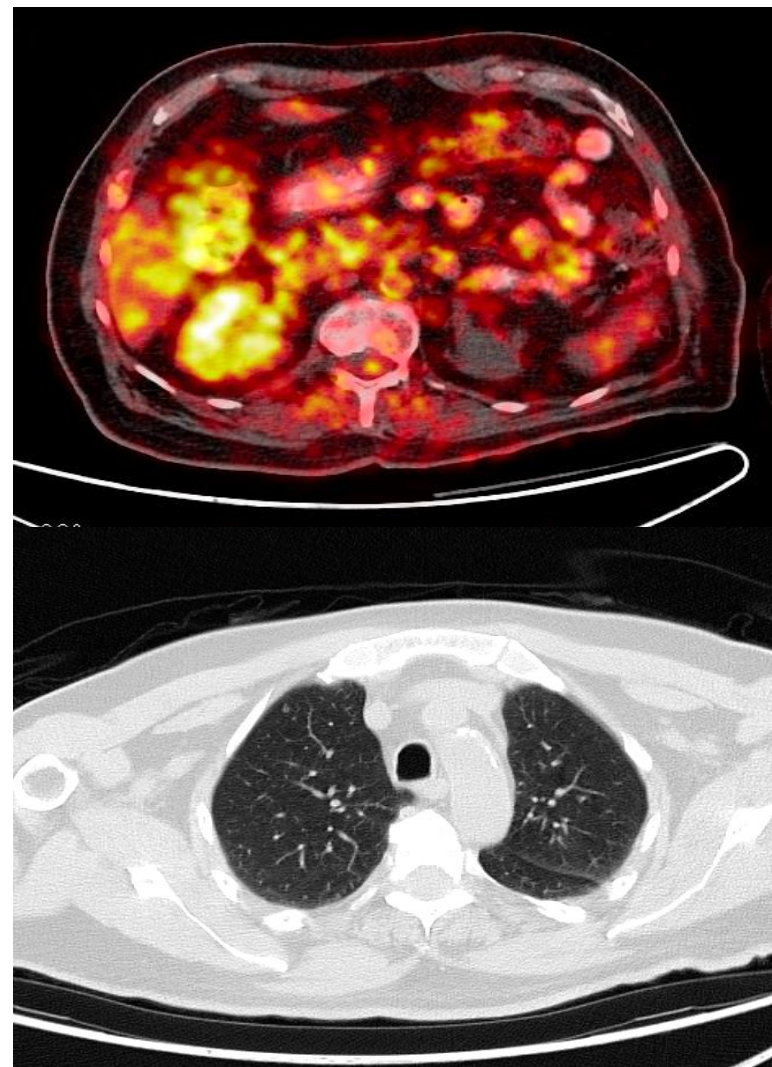
Subtype	No.	Primary site (No.)	Concomitant Pazopanib
LMS	7	uterus (4), vulva (2), RP (1)	yes (4), no (3)
OS	4	pelvis (1), maxilla (2), humerus (1)	yes (3), no (1)
UPS	3	quadratus lumborum, UE (2)	yes
SS	2	UE, LE	yes
EpS	2	neck, chest wall	yes (1), no (1)
MC	1	skull	no
DC	2	buttock, LE	no
IS	1	pulmonary artery	no
DFSP	1	scalp	yes
MPNST	1	lumbar spine	yes
LPS-DD	1	RP	yes
ASPS	1	chest wall	yes
DSRCT	1	adrenal	no
RMS	1	diaphragm	no

Supplementary Table 1. Sarcoma subtypes. Primary site and concomitant treatment with pazopanib given at 400-800mg po daily, are indicated.

DC= dedifferentiate chondrosarcoma; MC= mesenchymal chondrosarcoma; LPS-DD=dedifferentiated liposarcoma; LMS=leiomyosarcoma; ASPS=alveolar soft part sarcoma; SS=synovial sarcoma; EpS=epithelioid sarcoma; IS=intimal sarcoma; UPS=undifferentiated pleomorphic sarcoma; DFSP=dermatofibrosarcoma protuberans; OS=osteosarcoma; MPNST=malignant peripheral nerve sheet tumor; DSRCT=desmoplastic small round cell tumor; RP=retroperitoneum; UE=upper extremity; LE=lower extremity.



PRE-TREATMENT



After 6 cycles

Supplementary Figure 1. Partial response (PR) to nivolumab in a 74 year-old male with metastatic dedifferentiated chondrosarcoma. This patient received 6 cycles of IV nivolumab 3mg/kg every 2 weeks; he is maintaining a PR after 26 cycles.