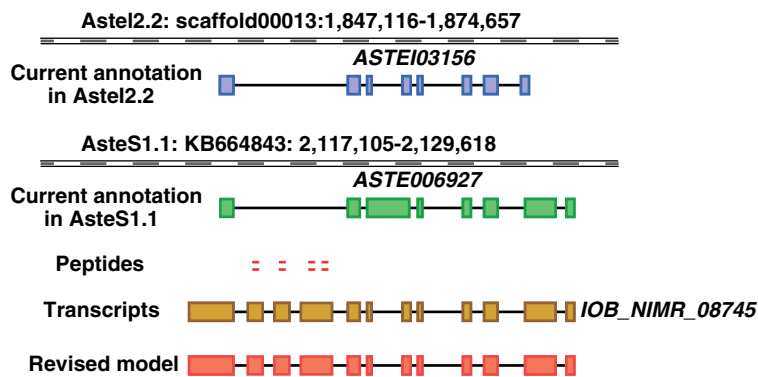
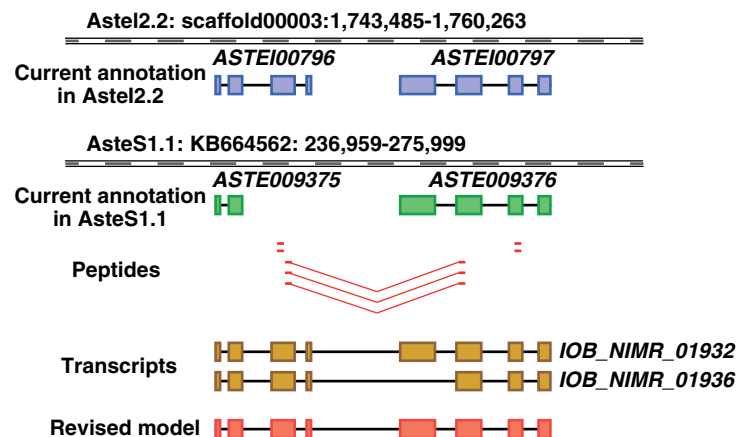


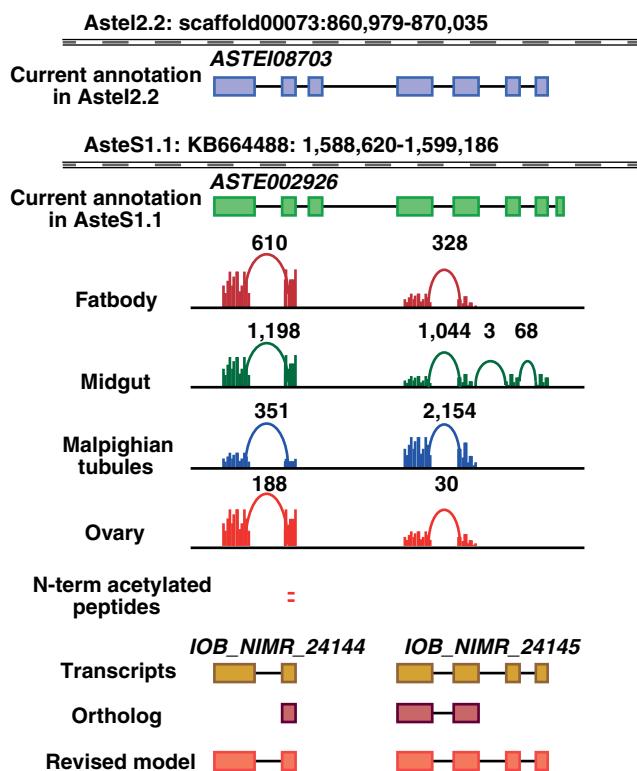
A



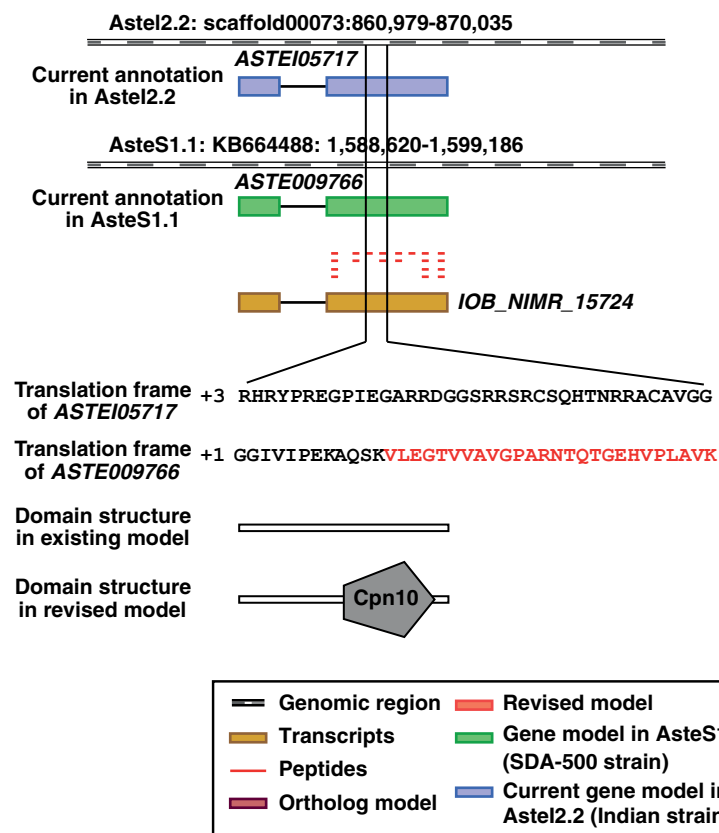
B



C



D



Supplemental Figure S3 Missed and revised genome annotation in *An. stephensi* Indian strain. **A.** Peptides identified against translated genome provided evidence for novel exons and revision of existing annotation in *Astel2* and *AsteS1* assembly. **B.** RNA-seq data and junctional peptides suggested merging of two adjacent independent genes in one gene. **C.** Split of an annotated gene into two independent genes based on RNA-seq evidence. Presence of an N-terminally acetylated peptide suggested independent start site for the split gene. **D.** Peptides mapping to the exon of *ASTEI05717* gene suggested its translation in alternate frame, which was further supported by translation of *ASTE009766* in SDA-500 strain.