

The Three-Herb Formula Shuang-Huang-Lian stabilizes mast cells through activation of mitochondrial calcium uniporter

Yuan Gao, Rui Hou, Qiaoling Fei, Lei Fang, Yixin Han, Runlan Cai, Cheng Peng*
and Yun Qi*

Supplemental material

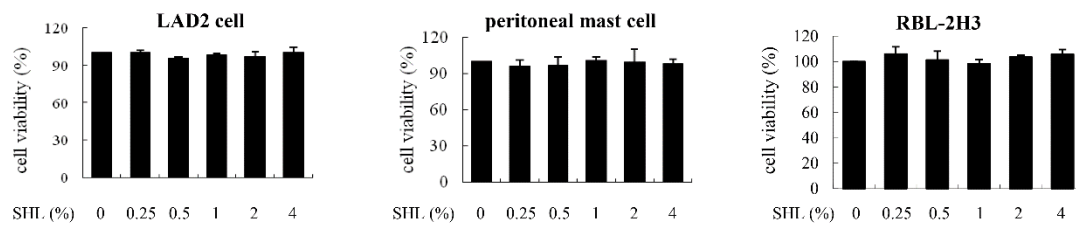


Fig. S1. Effects of SHL on the cells' viability. LAD2 cells, peritoneal MCs or RBL-2H3 cells were incubated with SHL at the indicated concentrations for 24 h and the cell viability was evaluated by MTS assay. Data represents the mean \pm SD of three independent experiments.

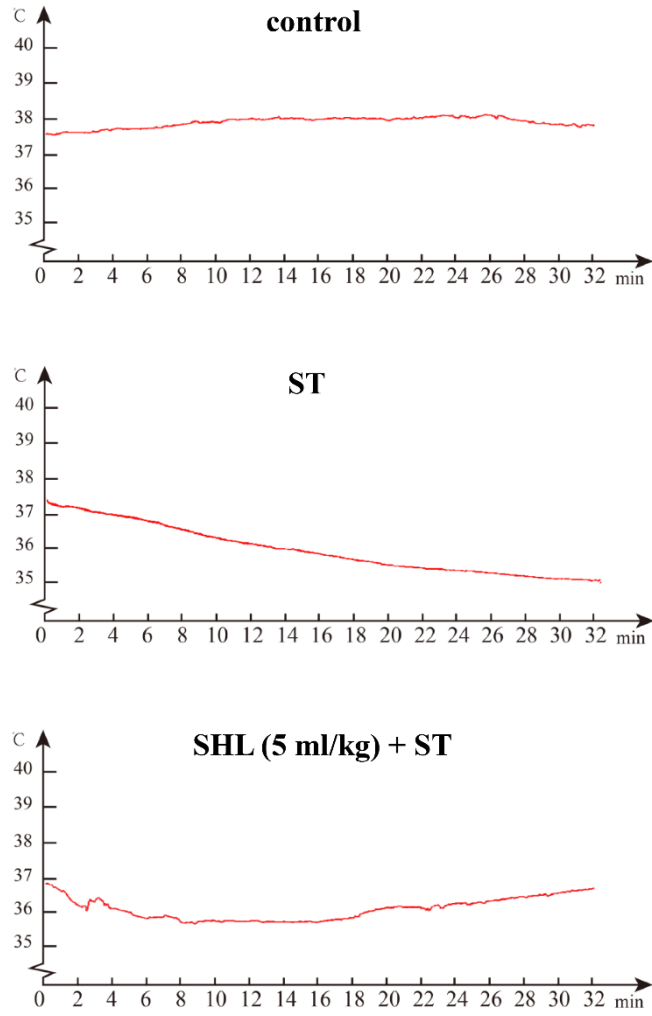


Fig. S2. Typical tracing showing the effect of SHL on the body temperature of PSA mice.

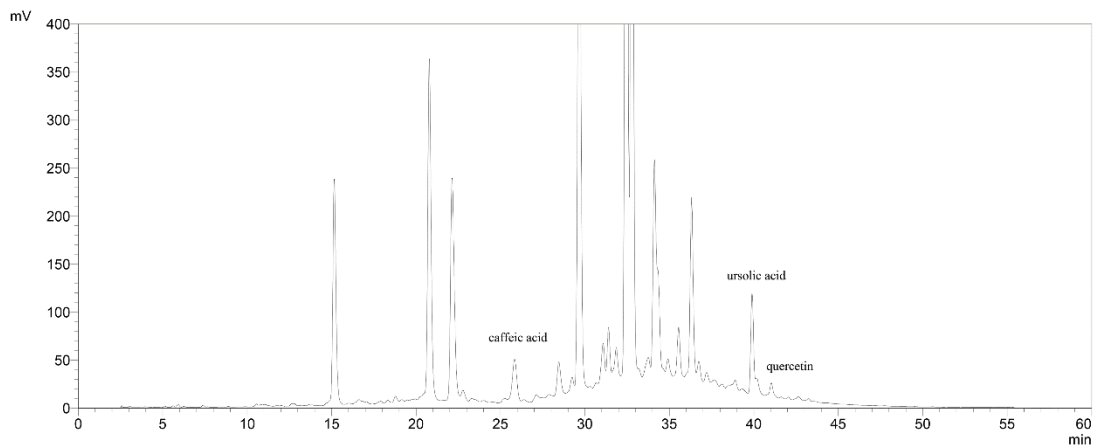


Fig. S3 A representative chromatogram of caffeic acid, ursolic acid and quercetin.

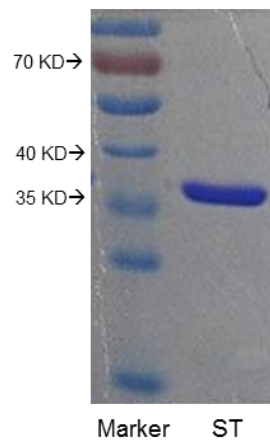


Fig. S4. Analysis of ST extracted from the *Metapenaeus ensis* by SDS-PAGE.

Table S1 Herbal sources of 26 constituents in the ELF.

No.	Constituent	Source	
		Lonicerae Japonicae Flos	Fructus Forsythiae
1	neochlorogenic acid	+	
2	luteolin	+	
3	chrysophanol		+*
4	oleanolic acid		+
5	isopimpinellin		+*
6	rutin	+	+
7	cryptochlorogenic acid	+	
8	physcion		+*
9	methyl salicylate		+
10	D-(-)-quinic acid	+	
11	isochlorogenic acid A	+	
12	isochlorogenic acid B	+	
13	isochlorogenic acid C	+	
14	quercitrin	+	
15	quercetin	+	+
16	chlorogenic acid	+	
17	eugenol	+	
18	forsythiaside B		+
19	hyperin	+	
20	ursolic acid		+
21	caffeic acid	+	+
22	acetophenone		+
23	forsythiaside		+
24	forsythin		+
25	forsythiaside E		+
26	caffeoylquinic acid	+	

* These constituents had been identified in the SHL injection, but their herbal sources had not been confirmed.