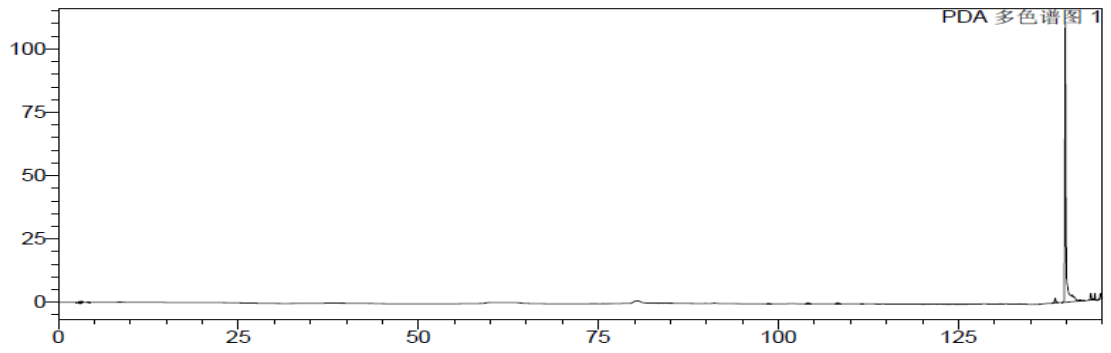
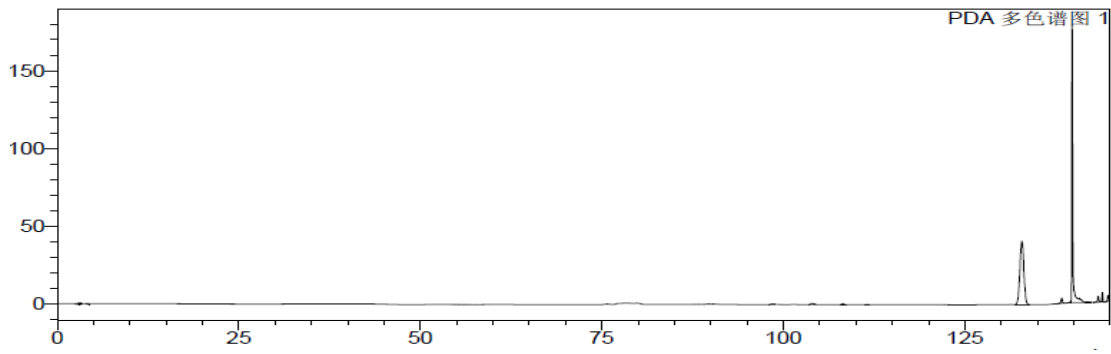


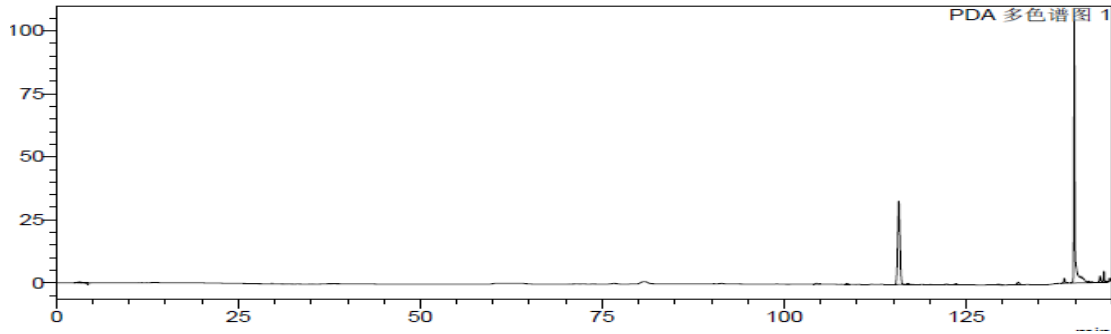
A.



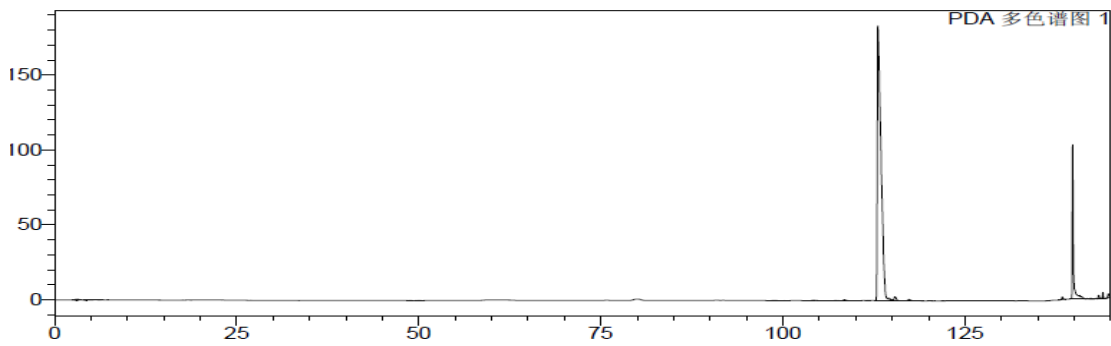
B.



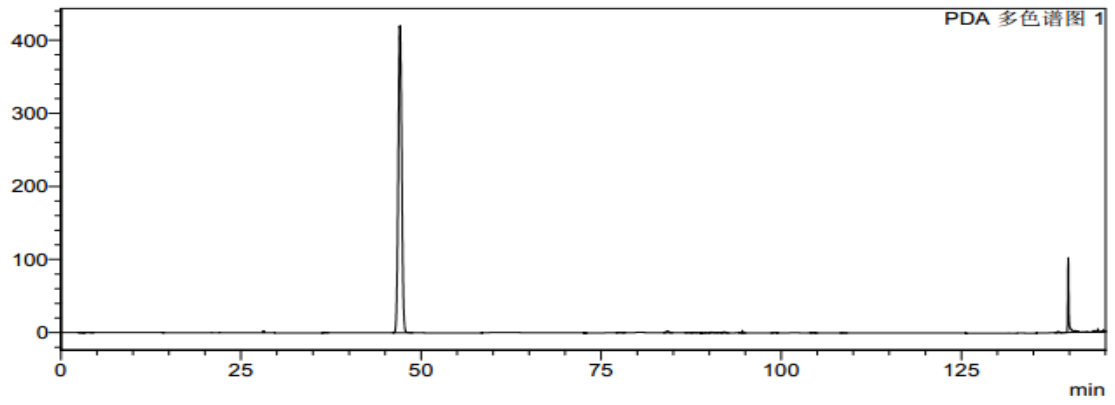
C.



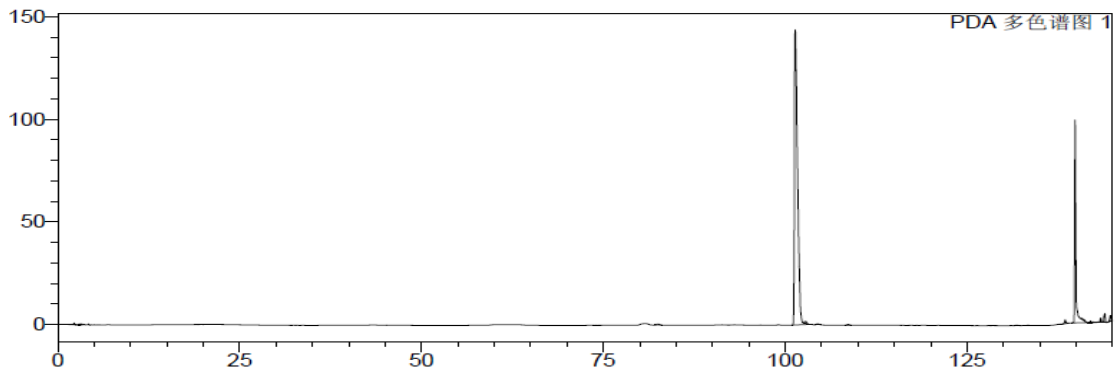
D.



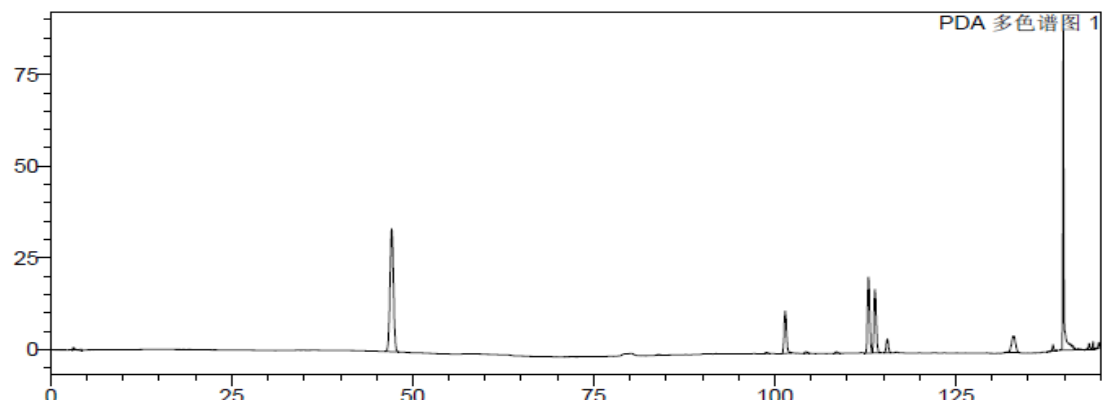
E.



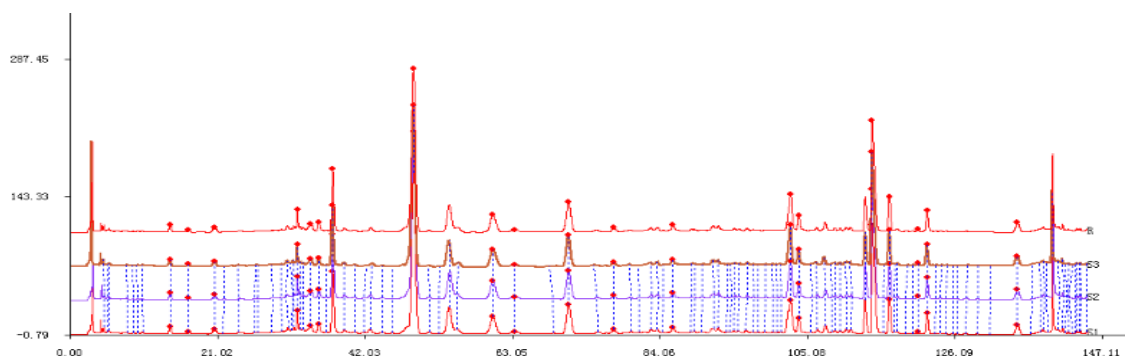
F.



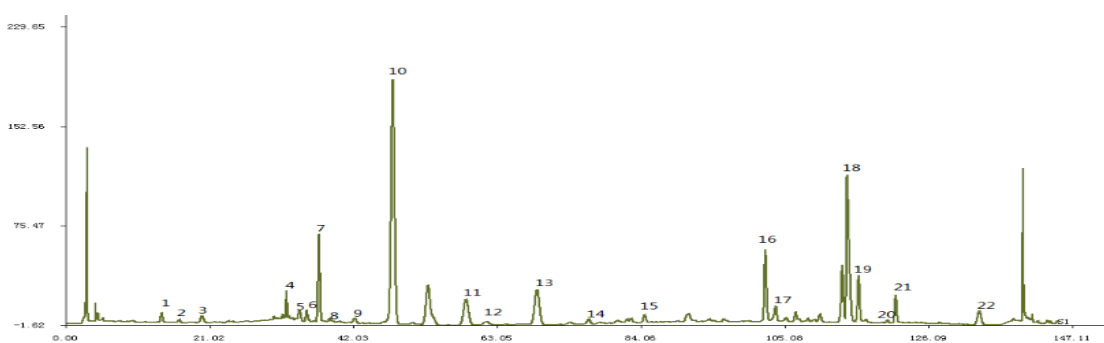
G.



H.



I.



Appendix 1. Fingerprint Chromatogram of TJXK Granule

(A) Chromatogram of blank methyl alcohol. (B) Reference chromatogram of paeonol. (C) Reference chromatogram of salvia acid B. (D) Reference chromatogram of berberine. (E) Reference chromatogram of puerarin. (F) Reference chromatogram of coptisine. (G) Chromatogram of mixture reference substance. (H) Fingerprint chromatogram of TJXK granule was established by using sample chromatography of 3 different production batches. (I) Twenty-two common fingerprint peaks were found in fingerprint chromatogram of TJXK granule.