

# Analysis Summary: Age of First Menses

---

## Phenotype Description

---

Quantitative trait based on the following question:

- Research Snippets
  - How old were you when you had your first menstrual period? (Under 8, 8-9 years old, 10-11 years old, 12-13 years old, 14-15 years old, 16 years old or older, I'm not sure)

Responses were restricted to female customers and were scored from 0 to 5 from youngest to oldest.

## Phenotype Statistics

---

The following table shows demographics of unrelated, European individuals included in the GWAS.

Phenotype	Group	Total	M	F	(0,30]	(30,45]	(45,60]	(60,Inf]
age_first_menses	under_8	39	0	39	8	17	9	5
	8-9	1535	0	1535	234	441	435	425
	10-11	16166	0	16166	2482	4246	4570	4868
	12-13	42946	0	42946	5876	11500	12795	12775
	14-15	13484	0	13484	1660	3548	4386	3890
	16+	2661	0	2661	276	657	941	787

The following table shows the phenotypic distribution across 23andMe genotyping platforms for individuals included in the GWAS.

Phenotype	Group	Total	v1/v2	v3	v4
age_first_menses	under_8	39		32	7
	8-9	1535	34	1205	296
	10-11	16166	393	12764	3009
	12-13	42946	1086	33844	8016
	14-15	13484	341	10704	2439
	16+	2661	65	2068	528

## Null Model with Covariates

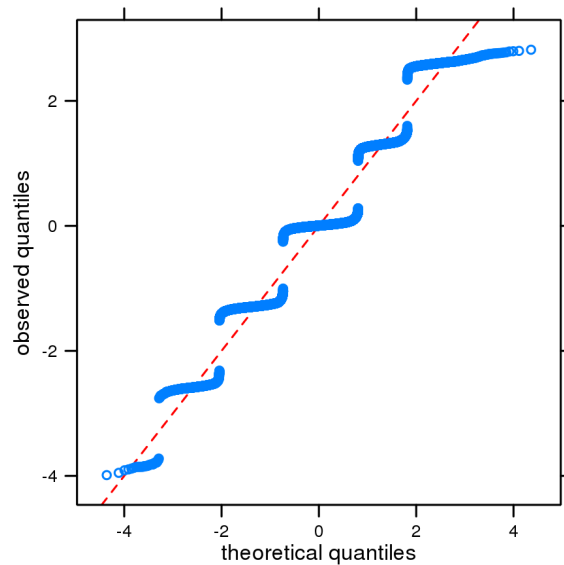
---

The following table shows results of fitting a model for the trait based on just the covariates. Principal coordinates have been standardized, so these effect sizes are in units of standard deviations.

	Estimate	Std. Error	t value	Pr(> t )
age	0.00118	0.000182	6.5	$1.0 \times 10^{-10}$
pc.0	0.00832	0.002817	3.0	0.0031
pc.1	0.02533	0.002826	9.0	$3.2 \times 10^{-19}$
pc.2	-0.02647	0.002827	-9.4	$7.8 \times 10^{-21}$
pc.3	0.00563	0.002813	2.0	0.045
pc.4	0.00364	0.002812	1.3	0.20

## Q-Q plot of scaled residuals

---



## SNP-level QC information

The following table shows results for QC filters on the genotyped data:

	<b>failed</b>	<b>passed</b>
no filters	0	1030430
not V1-only, chrM, chrY	4790	1025640
parent-offspring test	2129	1023511
MAF > 0%	3203	1020494
HWE > 1e-20	48225	972832
gt.rate > 90%	30775	952826
batch effects	28267	945446

The following table shows results for QC filters on the imputed dosage data:

	<b>failed</b>	<b>passed</b>
no filters	0	13733809
MAF > 0%	0	13733809
imputation quality	0	13733809
batch effects	2168	13731641

The following table shows results for QC filters on the merged association test results:

	<b>passed</b>	<b>total</b>
imputed only	12833621	12833621
both passed	898002	13731623
genotyped only	47444	13779067
no test result	-11514	13767553
MAF < 0.1%	-1728061	12039492

## Genetic Association Tests

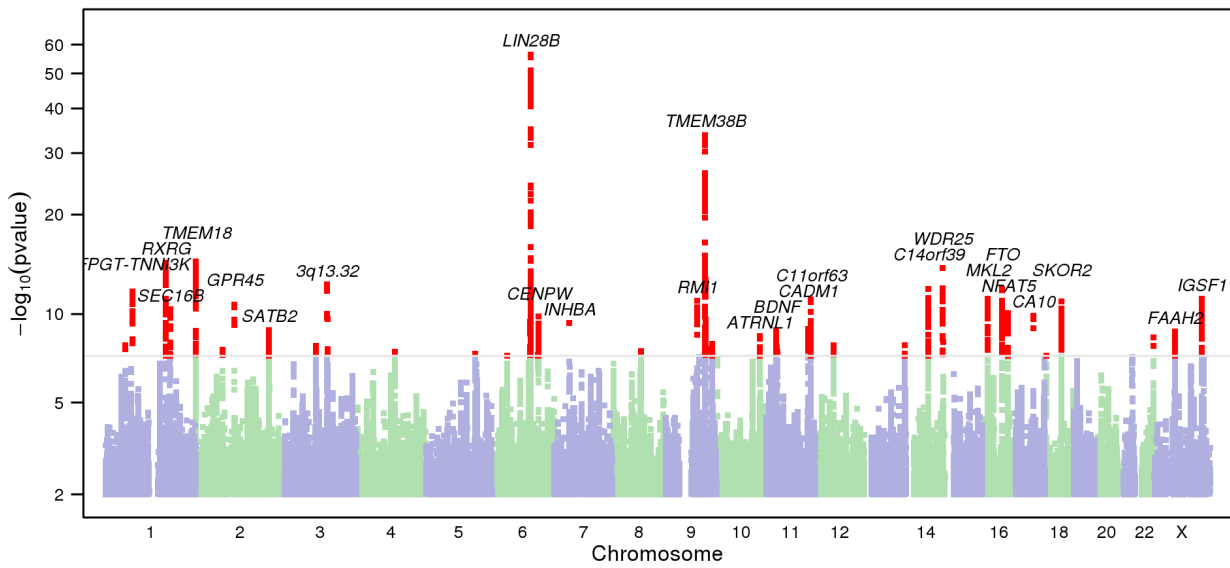
We performed linear regression assuming an additive model for allelic effects, using the model:

$$age\_first\_menses \sim age + pc.0 + pc.1 + pc.2 + pc.3 + pc.4 + genotype$$

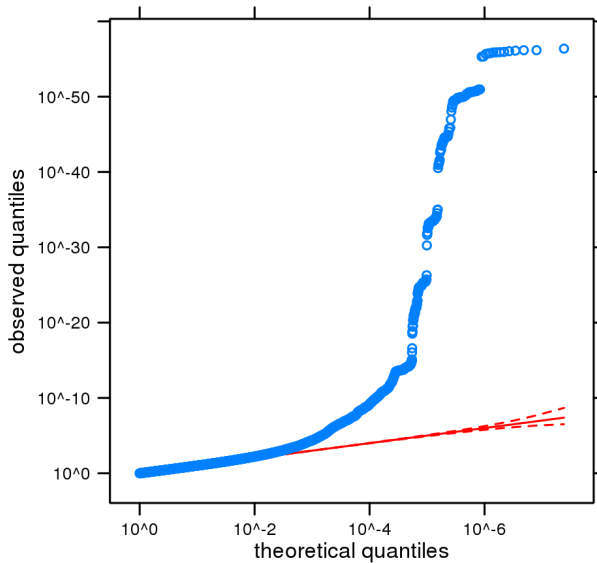
This genome-wide association analysis includes data from 76831 individuals of European ancestry, filtered to remove close relatives.

The results in this report have been adjusted for a genomic control inflation factor  $\lambda=1.174$ . The equivalent inflation factor rescaled for a sample size of 2000 would be  $\lambda_{2000}= 1.005$  , and for 20000,  $\lambda_{20000}= 1.045$  .

# Manhattan Plot



# Q-Q Plot of GWAS Results



# Index SNPs for Strongest Associations

cytoband	assay.name	scaffold	position	alleles	src	pvalue	effect	95% CI	gene.context
6q16.3	rs7766336	chr6	105388405	G/T	I	4.2×10 <sup>-57</sup>	0.074	[0.065,0.083]	HACE1--[]--LIN28B
9q31.2	rs12686569	chr9	108916711	G/T	I	1.7×10 <sup>-34</sup>	-0.057	[-0.066,-0.048]	TMEM38B---[]---ZNF462
2p25.3	rs201205097	chr2	613044	D/I	I	3.1×10 <sup>-15</sup>	-0.044	[-0.055,-0.033]	FAM150B---[]--TMEM18
1q23.3	rs100537	chr1	165413644	A/G	I	3.9×10 <sup>-15</sup>	-0.034	[-0.042,-0.026]	[RXRG]
14q32.2	rs12894936	chr14	100846991	C/T	I	1.4×10 <sup>-14</sup>	-0.037	[-0.046,-0.028]	[WDR25]
3q13.32	rs6438424	chr3	117574822	A/C	I	4.1×10 <sup>-13</sup>	0.031	[0.023,0.040]	[]
14q23.1	rs1254309	chr14	60890422	A/G	I	1.1×10 <sup>-12</sup>	0.038	[0.028,0.049]	PPM1A---[]--C14orf39
16q12.2	rs1558902	chr16	53803574	A/T	I	1.1×10 <sup>-12</sup>	0.031	[0.023,0.040]	[FTO]
1p31.1	rs1040070	chr1	74977870	C/G	I	1.7×10 <sup>-12</sup>	-0.031	[-0.040,-0.022]	[FPGT-TNNI3K]
16p13.12	rs1704528	chr16	14388750	C/T	I	6.4×10 <sup>-12</sup>	-0.033	[-0.042,-0.024]	MKL2--[]---PARN
Xq26.2	rs762080	chrX	130534030	A/C	I	6.5×10 <sup>-12</sup>	0.035	[0.025,0.044]	IGSF1---[]---OR13H1
11q24.1	rs7113019	chr11	122819119	A/C	I	7.1×10 <sup>-12</sup>	0.030	[0.021,0.038]	[C11orf63]
9q21.32	rs2378662	chr9	86707289	A/G	I	9.5×10 <sup>-12</sup>	0.030	[0.021,0.038]	RMI1--[]---SLC28A3
18q21.1	rs2048523	chr18	44799515	A/G	I	1.1×10 <sup>-11</sup>	-0.029	[-0.038,-0.021]	SKOR2--[]---SMAD2
2q12.1	rs2679894	chr2	105870779	A/G	I	2.0×10 <sup>-11</sup>	-0.032	[-0.042,-0.023]	GPR45--[]---TGFBRAP1
1q25.2	rs571567	chr1	177872905	A/G	I	4.6×10 <sup>-11</sup>	0.036	[0.025,0.047]	FAM5B---[]--SEC16B
16q22.1	rs6499244	chr16	69735271	A/T	I	8.7×10 <sup>-11</sup>	0.028	[0.020,0.037]	[NFAT5]

17q21.33	rs9635759	chr17	49613785	A/G	I	1.3×10 <sup>-10</sup>	-0.030	[-0.039,-0.021]	UTP18---[---]CA10
6q22.32	rs1490384	chr6	126851160	C/T	I	1.4×10 <sup>-10</sup>	-0.028	[-0.036,-0.019]	CENPW---[---]RSPO3
7p14.1	rs4141153	chr7	41467946	A/G	I	4.2×10 <sup>-10</sup>	0.034	[0.023,0.044]	C7orf10---[---]INHBA
11q23.3	rs5794958	chr11	115044361	D/I	I	1.0×10 <sup>-9</sup>	0.031	[0.021,0.041]	[CADM1]
2q33.1	rs1456522	chr2	199769183	A/G	I	1.3×10 <sup>-9</sup>	-0.028	[-0.038,-0.019]	PLCL1---[---]SATB2
11p14.1	rs35051342	chr11	27634373	C/G	I	1.4×10 <sup>-9</sup>	-0.032	[-0.043,-0.022]	LIN7C---[---]BDNF
Xp11.21	rs5914101	chrX	57439945	A/G	I	1.6×10 <sup>-9</sup>	0.033	[0.022,0.043]	[FAAH2]
10q25.3	rs11349289	chr10	117483568	D/I	I	3.2×10 <sup>-9</sup>	0.027	[0.018,0.036]	[ATRNL1]
22q13.33	rs11703376	chr22	49678713	C/T	I	3.7×10 <sup>-9</sup>	-0.028	[-0.038,-0.019]	FAM19A5---[---]C22orf34
9q33.3	rs4072705	chr9	127373463	A/C	I	9.7×10 <sup>-9</sup>	-0.025	[-0.033,-0.016]	[NR6A1]
1p32.3	rs630602	chr1	54728864	C/G	I	1.1×10 <sup>-8</sup>	0.026	[0.017,0.034]	[SSBP3]
13q34	rs35413307	chr13	112191778	G/T	I	1.2×10 <sup>-8</sup>	0.026	[0.017,0.034]	TEX29---[---]SOX1
12q13.12	rs7306275	chr12	50250111	A/G	I	1.2×10 <sup>-8</sup>	0.027	[0.018,0.036]	BCDIN3D---[---]FAIM2
3p12.1	rs13068899	chr3	86944938	A/T	I	1.3×10 <sup>-8</sup>	0.027	[0.018,0.036]	CADM2---[---]VGLL3
11p14.1	rs11031005	chr11	30226356	C/T	I	1.5×10 <sup>-8</sup>	-0.035	[-0.047,-0.023]	KCNA4---[---]FSHB
9q31.3	rs10217747	chr9	114309935	C/T	I	2.0×10 <sup>-8</sup>	0.025	[0.017,0.034]	ZNF483---[---]PTGR1
2p13.1	rs35273932	chr2	73739848	G/T	I	2.1×10 <sup>-8</sup>	0.116	[0.075,0.157]	[ALMS1]
8q21.11	rs10094574	chr8	78116067	A/G	I	2.6×10 <sup>-8</sup>	0.027	[0.018,0.037]	PEX2---[---]
4q24	rs112217694	chr4	104641064	C/G	I	2.9×10 <sup>-8</sup>	-0.053	[-0.072,-0.034]	TACR3---[---]CXXC4
5q31.1	rs13178130	chr5	133905829	C/T	I	3.7×10 <sup>-8</sup>	0.025	[0.016,0.034]	[PHF15]
6p21.1	rs9349203	chr6	41893323	A/G	I	4.7×10 <sup>-8</sup>	0.024	[0.015,0.032]	[BYSL]
18p11.31	rs35212912	chr18	3816054	D/I	I	4.8×10 <sup>-8</sup>	-0.030	[-0.040,-0.019]	[DLGAP1]

## Quality Statistics for Index SNPs

assay.name	is.v2	is.v3	is.v4	gt.rate	hw.p.value	p.date	freq.b	avg.rsqr	min.rsqr	p.batch	dose.b	qc.mask
rs7766336	FALSE	FALSE	FALSE					0.9785	0.9758	0.089	0.3188	v2v3v4
rs12686569	TRUE	TRUE	TRUE	0.9971	0.67	0.27	0.3200	0.9998	0.9995	0.50	0.3211	v2v3v4
rs201205097	FALSE	FALSE	FALSE					0.9903	0.9848	0.33	0.8172	v2v3v4
rs100537	TRUE	TRUE	TRUE	0.9992	0.40	0.94	0.5410	0.9955	0.9861	0.50	0.5408	v2v3v4
rs12894936	FALSE	FALSE	FALSE					0.9389	0.9109	1.0	0.3069	v2v3v4
rs6438424	FALSE	FALSE	FALSE					0.9966	0.9953	0.60	0.4981	v2v3v4
rs1254309	FALSE	FALSE	FALSE					0.8462	0.8390	0.0010	0.2544	v2v3v4
rs1558902	FALSE	TRUE	TRUE	0.9992	0.071	0.55	0.5872	1.0000	0.9997	0.61	0.5870	v2v3v4
rs1040070	FALSE	FALSE	FALSE					0.9928	0.9768	0.38	0.4274	v2v3v4
rs1704528	FALSE	FALSE	FALSE					0.9049	0.6372	0.043	0.6657	v2v3v4
rs762080	FALSE	FALSE	FALSE					0.9974	0.9917	9.0×10 <sup>-5</sup>	0.7561	v2v3v4
rs7113019	FALSE	FALSE	FALSE					0.9916	0.9851	0.020	0.5102	v2v3v4
rs2378662	FALSE	FALSE	FALSE					0.9888	0.9706	0.052	0.4548	v2v3v4
rs2048523	TRUE	TRUE	TRUE	0.9990	0.52	0.64	0.5361	0.9986	0.9976	0.48	0.5349	v2v3v4
rs2679894	FALSE	FALSE	FALSE					0.8072	0.6432	5.8×10 <sup>-5</sup>	0.5519	v2v3v4
rs571567	FALSE	FALSE	FALSE					0.9969	0.9959	0.037	0.8122	v2v3v4
rs6499244	FALSE	FALSE	FALSE					0.9990	0.9965	0.59	0.4539	v2v3v4
rs9635759	FALSE	TRUE	FALSE	0.9809	0.00010	0.00016	0.6879	0.9964	0.9758	0.032	0.6945	v2v3v4
rs1490384	FALSE	FALSE	FALSE					0.9892	0.9856	6.2×10 <sup>-5</sup>	0.5159	v2v3v4
rs4141153	TRUE	TRUE	TRUE	0.9997	0.97	0.12	0.1981	0.9999	0.9994	0.085	0.1975	v2v3v4
rs5794958	FALSE	FALSE	FALSE					0.9688	0.9490	0.89	0.2481	v2v3v4
rs1456522	FALSE	FALSE	FALSE					0.9873	0.9748	0.00081	0.6874	v2v3v4
rs35051342	FALSE	FALSE	FALSE					0.9978	0.9953	0.79	0.7902	v2v3v4
rs5914101	FALSE	FALSE	FALSE					0.9130	0.8820	1.5×10 <sup>-17</sup>	0.7602	v2v3v4
rs11349289	FALSE	FALSE	FALSE					0.9659	0.9621	0.069	0.6348	v2v3v4
rs11703376	FALSE	TRUE	FALSE	0.9974	0.00054	0.70	0.2815	0.9931	0.9656	0.16	0.2803	v2v3v4
rs4072705	FALSE	FALSE	FALSE					0.9916	0.9898	0.11	0.4979	v2v3v4
rs630602	FALSE	FALSE	FALSE					0.9592	0.9538	0.0011	0.4149	v2v3v4
rs35413307	FALSE	FALSE	FALSE					0.9610	0.9487	0.70	0.4068	v2v3v4
rs7306275	FALSE	FALSE	FALSE					0.8748	0.8645	0.0029	0.6243	v2v3v4
rs13068899	FALSE	FALSE	FALSE					0.8476	0.8380	0.00062	0.5987	v2v3v4
rs11031005	FALSE	FALSE	FALSE					0.9975	0.9957	0.083	0.8604	v2v3v4
rs10217747	FALSE	FALSE	FALSE					0.9666	0.9340	0.21	0.3817	v2v3v4
rs35273932	FALSE	FALSE	FALSE					0.8583	0.8065	0.0021	0.0126	v2v3v4
rs10094574	FALSE	FALSE	FALSE					0.9671	0.9553	0.74	0.7246	v2v3v4
rs112217694	FALSE	FALSE	FALSE					0.9299	0.9195	0.053	0.9432	v2v3v4
rs13178130	TRUE	TRUE	TRUE	0.9997	0.081	0.0077	0.3668	0.9959	0.9910	0.0028	0.3670	v2v3v4
rs9349203	FALSE	FALSE	FALSE					0.9893	0.9814	0.51	0.4602	v2v3v4
rs35212912	FALSE	FALSE	FALSE					0.9720	0.9682	0.92	0.7187	v3

## SNP Statistics in the GWAS Sample

assay.name	AA.0	AB.0	BB.0	im.num.0	dose.b.0
rs7766336				76831	0.3225
rs12686569	35596	33359	7707	76831	0.3189
rs201205097				76831	0.8205
rs100537	16359	38002	22396	76831	0.5386
rs12894936				76831	0.3035
rs6438424				76831	0.4994
rs1254309				76831	0.2519
rs1558902	12286	35916	26668	76831	0.5961
rs1040070				76831	0.4266
rs1704528				76831	0.6659

rs762080				76831	0.7579
rs7113019				76831	0.5091
rs2378662				76831	0.4557
rs2048523	16300	38174	22296	76831	0.5393
rs2679894				76831	0.5571
rs571567				76831	0.8074
rs6499244				76831	0.4499
rs9635759	5666	25733	28042	76831	0.6936
rs1490384				76831	0.5099
rs4141153	49563	24263	2989	76831	0.1968
rs5794958				76831	0.2537
rs1456522				76831	0.6815
rs35051342				76831	0.7960
rs5914101				76831	0.7686
rs11349289				76831	0.6357
rs11703376	31776	23912	4799	76831	0.2759
rs4072705				76831	0.4998
rs630602				76831	0.4120
rs35413307				76831	0.4048
rs7306275				76831	0.6254
rs13068899				76831	0.5966
rs11031005				76831	0.8592
rs10217747				76831	0.3790
rs35273932				76831	0.0126
rs10094574				76831	0.7231
rs112217694				76831	0.9431
rs13178130	31058	35595	10162	76831	0.3631
rs9349203				76831	0.4549
rs35212912				60351	0.7166

## Annotations from NHGRI GWAS Catalog

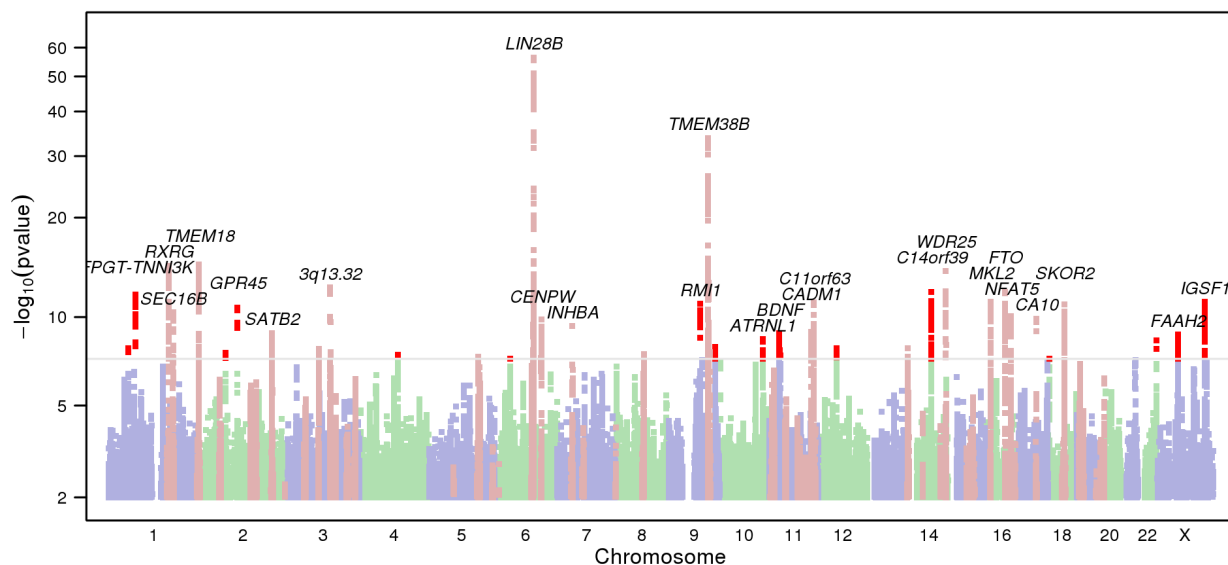
The following table shows, for each index SNP, all entries in the NHGRI GWAS Catalog that are within 500kb and in at least moderate linkage disequilibrium ( $r^2 > 0.5$ ).

region	position	our.name	our.pval	dist	rsqr	assay.name	pvalue	pubmed.id	trait	genes
6q16.3	105388405	rs7766336	$4.2 \times 10^{-57}$	-20789	0.983	rs9391253	$5.0 \times 10^{-12}$	23563607	Height	LIN28B
6q16.3	105388405	rs7766336	$4.2 \times 10^{-57}$	-9451	0.971	rs7759938	$4.0 \times 10^{-9}$	23449627	Pubertal anthropometrics	LIN28B
6q16.3	105388405	rs7766336	$4.2 \times 10^{-57}$	-9451	0.971	rs7759938	$5.0 \times 10^{-60}$	21102462	Menarche (age at onset)	LIN28B
6q16.3	105388405	rs7766336	$4.2 \times 10^{-57}$	-9451	0.971	rs7759938	$8.0 \times 10^{-31}$	20881960	Height	LIN28B
6q16.3	105388405	rs7766336	$4.2 \times 10^{-57}$	-9451	0.971	rs7759938	$7.0 \times 10^{-9}$	19448620	Menarche (age at onset)	LIN28B
6q16.3	105388405	rs7766336	$4.2 \times 10^{-57}$	12432	0.575	rs314280	$2.0 \times 10^{-14}$	19448622	Menarche (age at onset)	LIN28B, HACE1, ...
6q16.3	105388405	rs7766336	$4.2 \times 10^{-57}$	19594	0.943	rs314276	$4.0 \times 10^{-16}$	19448623	Menarche (age at onset)	LIN28B
6q16.3	105388405	rs7766336	$4.2 \times 10^{-57}$	29573	0.943	rs314268	$8.0 \times 10^{-7}$	18391951	Height	LIN28B, HACE1, ...
6q16.3	105388405	rs7766336	$4.2 \times 10^{-57}$	54784	0.640	rs364663	$5.0 \times 10^{-7}$	23667675	Menarche (age at onset)	LIN28B
9q31.2	108916711	rs12686569	$1.7 \times 10^{-34}$	19963	0.521	rs7861820	$3.0 \times 10^{-9}$	19448621	Menarche and menopause (age at onset)	Intergenic
9q31.2	108916711	rs12686569	$1.7 \times 10^{-34}$	50377	0.940	rs2090409	$2.0 \times 10^{-6}$	23449627	Pubertal anthropometrics	TMEM38B
9q31.2	108916711	rs12686569	$1.7 \times 10^{-34}$	50377	0.940	rs2090409	$2.0 \times 10^{-33}$	21102462	Menarche (age at onset)	TMEM38B
9q31.2	108916711	rs12686569	$1.7 \times 10^{-34}$	50377	0.940	rs2090409	$2.0 \times 10^{-9}$	19448620	Menarche (age at onset)	TMEM38B, SLC44A1, ...
2p25.3	613044	rs201205097	$3.1 \times 10^{-15}$	1124	0.973	rs2947411	$2.0 \times 10^{-8}$	21102462	Menarche (age at onset)	TMEM18
2p25.3	613044	rs201205097	$3.1 \times 10^{-15}$	9783	0.964	rs2867125	$3.0 \times 10^{-49}$	20935630	Body mass index	TMEM18
2p25.3	613044	rs201205097	$3.1 \times 10^{-15}$	10990	0.964	rs6711012	$6.0 \times 10^{-35}$	23563607	Obesity	TMEM18
2p25.3	613044	rs201205097	$3.1 \times 10^{-15}$	11634	0.964	rs2903492	$6.0 \times 10^{-15}$	23563607	Body mass index	TMEM18
2p25.3	613044	rs201205097	$3.1 \times 10^{-15}$	16200	0.921	rs12463617	$3.0 \times 10^{-17}$	23669352	Body mass index	TMEM18
2p25.3	613044	rs201205097	$3.1 \times 10^{-15}$	16200	0.921	rs12463617	$2.0 \times 10^{-13}$	23563609	Obesity (early onset extreme)	TMEM18
2p25.3	613044	rs201205097	$3.1 \times 10^{-15}$	21861	0.921	rs6548238	$1.0 \times 10^{-18}$	19079261	Body mass index	TMEM18
2p25.3	613044	rs201205097	$3.1 \times 10^{-15}$	31909	0.904	rs7561317	$2.0 \times 10^{-18}$	19079260	Weight	TMEM18
2p25.3	613044	rs201205097	$3.1 \times 10^{-15}$	31909	0.904	rs7561317	$4.0 \times 10^{-17}$	19079260	Body mass index	TMEM18
3q13.32	117574822	rs6438424	$4.1 \times 10^{-13}$	0	1.000	rs6438424	$1.0 \times 10^{-13}$	21102462	Menarche (age at onset)	Intergenic
14q23.1	60890422	rs1254309	$1.1 \times 10^{-12}$	13335	0.671	rs1254319	$1.0 \times 10^{-8}$	23396134	Refractive error	SIX6
16q12.2	53803574	rs1558902	$1.1 \times 10^{-12}$	-2820	0.963	rs9940128	$4.0 \times 10^{-23}$	23669352	Body mass index	FTO
16q12.2	53803574	rs1558902	$1.1 \times 10^{-12}$	-2820	0.963	rs9940128	$2.0 \times 10^{-9}$	22399527	Metabolic syndrome	FTO
16q12.2	53803574	rs1558902	$1.1 \times 10^{-12}$	-2620	1.000	rs1421085	$1.0 \times 10^{-9}$	23636237	Dietary macronutrient intake	FTO
16q12.2	53803574	rs1558902	$1.1 \times 10^{-12}$	-2620	1.000	rs1421085	$3.0 \times 10^{-28}$	23563609	Obesity (early onset extreme)	FTO
16q12.2	53803574	rs1558902	$1.1 \times 10^{-12}$	-2620	1.000	rs1421085	$1.0 \times 10^{-28}$	19151714	Obesity	FTO
16q12.2	53803574	rs1558902	$1.1 \times 10^{-12}$	0	1.000	rs1558902	$1.0 \times 10^{-7}$	21544081	Obesity	FTO
16q12.2	53803574	rs1558902	$1.1 \times 10^{-12}$	0	1.000	rs1558902	$5.0 \times 10^{-120}$	20935630	Body mass index	FTO
16q12.2	53803574	rs1558902	$1.1 \times 10^{-12}$	0	1.000	rs1558902	$7.0 \times 10^{-13}$	20421936	Obesity (extreme)	FTO
16q12.2	53803574	rs1558902	$1.1 \times 10^{-12}$	0	1.000	rs1558902	$5.0 \times 10^{-19}$	19557197	Waist circumference	FTO
16q12.2	53803574	rs1558902	$1.1 \times 10^{-12}$	5673	0.963	rs1121980	$4.0 \times 10^{-8}$	18454148	Body mass index	FTO
16q12.2	53803574	rs1558902	$1.1 \times 10^{-12}$	5673	0.963	rs1121980	$1.0 \times 10^{-7}$	18159244	Obesity (early onset extreme)	FTO
16q12.2	53803574	rs1558902	$1.1 \times 10^{-12}$	9793	0.932	rs17817449	$6.0 \times 10^{-7}$	23535733	Breast cancer	MIR1972-2, FTO
16q12.2	53803574	rs1558902	$1.1 \times 10^{-12}$	9793	0.932	rs17817449	$6.0 \times 10^{-14}$	23535729	Breast cancer	MIR1972-2, FTO
16q12.2	53803574	rs1558902	$1.1 \times 10^{-12}$	9793	0.932	rs17817449	$2.0 \times 10^{-12}$	21552555	Obesity	FTO
16q12.2	53803574	rs1558902	$1.1 \times 10^{-12}$	9876	0.927	rs8043757	$5.0 \times 10^{-110}$	23563607	Obesity	FTO

16q12.2	53803574	rs1558902	$1.1 \times 10^{-12}$	12701	0.927	rs8050136	$6.0 \times 10^{-6}$	23209189	Type 2 diabetes	FTO
16q12.2	53803574	rs1558902	$1.1 \times 10^{-12}$	12701	0.927	rs8050136	$3.0 \times 10^{-26}$	21706003	Adiposity	FTO
16q12.2	53803574	rs1558902	$1.1 \times 10^{-12}$	12701	0.927	rs8050136	$4.0 \times 10^{-8}$	21037115	Body mass in chronic obstructive pulmonary disease	FTO
16q12.2	53803574	rs1558902	$1.1 \times 10^{-12}$	12701	0.927	rs8050136	$5.0 \times 10^{-36}$	19079260	Weight	FTO
16q12.2	53803574	rs1558902	$1.1 \times 10^{-12}$	12701	0.927	rs8050136	$1.0 \times 10^{-47}$	19079260	Body mass index	FTO
16q12.2	53803574	rs1558902	$1.1 \times 10^{-12}$	12701	0.927	rs8050136	$2.0 \times 10^{-17}$	19056611	Type 2 diabetes	FTO
16q12.2	53803574	rs1558902	$1.1 \times 10^{-12}$	12701	0.927	rs8050136	$7.0 \times 10^{-6}$	18372903	Type 2 diabetes	FTO
16q12.2	53803574	rs1558902	$1.1 \times 10^{-12}$	12701	0.927	rs8050136	$7.0 \times 10^{-14}$	17463249	Type 2 diabetes	FTO
16q12.2	53803574	rs1558902	$1.1 \times 10^{-12}$	12701	0.927	rs8050136	$1.0 \times 10^{-12}$	17463248	Type 2 diabetes	FTO
16q12.2	53803574	rs1558902	$1.1 \times 10^{-12}$	16319	0.927	rs11075990	$2.0 \times 10^{-51}$	23563607	Body mass index	FTO
16q12.2	53803574	rs1558902	$1.1 \times 10^{-12}$	16953	0.927	rs9939609	$1.0 \times 10^{-20}$	22693455	Type 2 diabetes	FTO
16q12.2	53803574	rs1558902	$1.1 \times 10^{-12}$	16953	0.927	rs9939609	$3.0 \times 10^{-8}$	21102462	Menarche (age at onset)	FTO
16q12.2	53803574	rs1558902	$1.1 \times 10^{-12}$	16953	0.927	rs9939609	$2.0 \times 10^{-7}$	19396169	Biomedical quantitative traits	FTO
16q12.2	53803574	rs1558902	$1.1 \times 10^{-12}$	16953	0.927	rs9939609	$4.0 \times 10^{-51}$	19079261	Body mass index	FTO
16q12.2	53803574	rs1558902	$1.1 \times 10^{-12}$	16953	0.927	rs9939609	$2.0 \times 10^{-7}$	17554300	Type 2 diabetes	FTO
16q12.2	53803574	rs1558902	$1.1 \times 10^{-12}$	16953	0.927	rs9939609	$2.0 \times 10^{-20}$	17434869	Body mass index	FTO
16q12.2	53803574	rs1558902	$1.1 \times 10^{-12}$	18041	0.932	rs7202116	$2.0 \times 10^{-10}$	22982992	Body mass index	FTO
16q12.2	53803574	rs1558902	$1.1 \times 10^{-12}$	21914	0.895	rs9941349	$6.0 \times 10^{-12}$	19553259	Obesity (extreme)	FTO
16q12.2	53803574	rs1558902	$1.1 \times 10^{-12}$	24492	0.927	rs17817964	$1.0 \times 10^{-10}$	23583978	Body mass index	FTO
16q12.2	53803574	rs1558902	$1.1 \times 10^{-12}$	26891	0.829	rs9930506	$9.0 \times 10^{-7}$	17658951	Obesity-related traits	FTO
16q12.2	53803574	rs1558902	$1.1 \times 10^{-12}$	28197	0.834	rs9922619	$6.0 \times 10^{-8}$	22589738	Subcutaneous adipose tissue	FTO
16q12.2	53803574	rs1558902	$1.1 \times 10^{-12}$	35561	0.551	rs8044769	$4.0 \times 10^{-6}$	22763110	Osteoarthritis	FTO
16q12.2	53803574	rs1558902	$1.1 \times 10^{-12}$	39334	0.828	rs12149832	$5.0 \times 10^{-22}$	22344221	Body mass index	FTO
16q12.2	53803574	rs1558902	$1.1 \times 10^{-12}$	41913	0.634	rs11642841	$3.0 \times 10^{-8}$	20581827	Type 2 diabetes	FTO
1p31.1	74977870	rs1040070	$1.7 \times 10^{-12}$	13532	0.851	rs1514177	$5.0 \times 10^{-9}$	23563607	Obesity	TNNI3K
1p31.1	74977870	rs1040070	$1.7 \times 10^{-12}$	13774	0.851	rs1514175	$3.0 \times 10^{-11}$	23669352	Body mass index	TNNI3K
1p31.1	74977870	rs1040070	$1.7 \times 10^{-12}$	13774	0.851	rs1514175	$8.0 \times 10^{-14}$	20935630	Body mass index	TNNI3K
1p31.1	74977870	rs1040070	$1.7 \times 10^{-12}$	15193	0.947	rs1514174	$6.0 \times 10^{-6}$	23449627	Pubertal anthropometrics	TNNI3K
16p13.12	14388750	rs1704528	$6.4 \times 10^{-12}$	-445	0.976	rs1659127	$4.0 \times 10^{-9}$	21102462	Menarche (age at onset)	MKL2
16p13.12	14388750	rs1704528	$6.4 \times 10^{-12}$	-445	0.976	rs1659127	$1.0 \times 10^{-11}$	20881960	Height	MKL2
1q25.2	177872905	rs571567	$4.6 \times 10^{-11}$	-20325	0.937	rs633715	$7.0 \times 10^{-20}$	23563607	Obesity	SEC16B
1q25.2	177872905	rs571567	$4.6 \times 10^{-11}$	-20325	0.937	rs633715	$5.0 \times 10^{-12}$	23563607	Body mass index	SEC16B
1q25.2	177872905	rs571567	$4.6 \times 10^{-11}$	-20325	0.937	rs633715	$2.0 \times 10^{-8}$	21102462	Menarche (age at onset)	SEC16B
1q25.2	177872905	rs571567	$4.6 \times 10^{-11}$	-17388	0.975	rs516636	$3.0 \times 10^{-9}$	22344221	Body mass index	SEC16B
1q25.2	177872905	rs571567	$4.6 \times 10^{-11}$	16575	0.975	rs543874	$4.0 \times 10^{-11}$	23669352	Body mass index	SEC16B
1q25.2	177872905	rs571567	$4.6 \times 10^{-11}$	16575	0.975	rs543874	$2.0 \times 10^{-13}$	23583978	Body mass index	SEC16B
1q25.2	177872905	rs571567	$4.6 \times 10^{-11}$	16575	0.975	rs543874	$4.0 \times 10^{-23}$	20935630	Body mass index	SEC16B
1q25.2	177872905	rs571567	$4.6 \times 10^{-11}$	40614	0.820	rs10913469	$1.0 \times 10^{-8}$	19079260	Weight	SEC16B, RASAL2, SEC16B, RASAL2
1q25.2	177872905	rs571567	$4.6 \times 10^{-11}$	40614	0.820	rs10913469	$6.0 \times 10^{-8}$	19079260	Body mass index	SEC16B, RASAL2
16q22.1	69735271	rs6499244	$8.7 \times 10^{-11}$	-146699	0.879	rs1364063	$2.0 \times 10^{-8}$	21102462	Menarche (age at onset)	NFAT5
17q21.33	49613785	rs9635759	$1.3 \times 10^{-10}$	0	1.000	rs9635759	$7.0 \times 10^{-13}$	21102462	Menarche (age at onset)	CA10
6q22.32	126851160	rs1490384	$1.4 \times 10^{-10}$	-152441	0.849	rs9388489	$4.0 \times 10^{-13}$	19430480	Type 1 diabetes	C6orf173
6q22.32	126851160	rs1490384	$1.4 \times 10^{-10}$	-83560	0.862	rs1361108	$9.0 \times 10^{-6}$	21998595	Height	Intergenic C6orf173, TRMT11
6q22.32	126851160	rs1490384	$1.4 \times 10^{-10}$	-83560	0.862	rs1361108	$2.0 \times 10^{-8}$	21102462	Menarche (age at onset)	Intergenic C6orf173, TRMT11
6q22.32	126851160	rs1490384	$1.4 \times 10^{-10}$	-15505	0.858	rs1490388	$6.0 \times 10^{-7}$	18391951	Height	C6orf173
6q22.32	126851160	rs1490384	$1.4 \times 10^{-10}$	0	1.000	rs1490384	$1.0 \times 10^{-16}$	23563607	Height	C6orf173
6q22.32	126851160	rs1490384	$1.4 \times 10^{-10}$	0	1.000	rs1490384	$4.0 \times 10^{-21}$	20881960	Height	C6orf173
6q22.32	126851160	rs1490384	$1.4 \times 10^{-10}$	115148	0.917	rs4549631	$5.0 \times 10^{-13}$	18391952	Height	LOC387103
7p14.1	41467946	rs4141153	$4.2 \times 10^{-10}$	2147	0.550	rs1079866	$6.0 \times 10^{-14}$	21102462	Menarche (age at onset)	INHBA
11p14.1	27634373	rs35051342	$1.4 \times 10^{-9}$	-70991	0.790	rs988712	$5.0 \times 10^{-17}$	21708048	Obesity	BDNF
11p14.1	27634373	rs35051342	$1.4 \times 10^{-9}$	45543	0.820	rs6265	$2.0 \times 10^{-8}$	20418890	Smoking behavior	BDNF
11p14.1	27634373	rs35051342	$1.4 \times 10^{-9}$	45543	0.820	rs6265	$2.0 \times 10^{-7}$	19079260	Weight	BDNF
11p14.1	27634373	rs35051342	$1.4 \times 10^{-9}$	45543	0.820	rs6265	$5.0 \times 10^{-10}$	19079260	Body mass index	BDNF
11p14.1	27634373	rs35051342	$1.4 \times 10^{-9}$	91613	0.879	rs10767664	$5.0 \times 10^{-26}$	20935630	Body mass index	BDNF
11p14.1	27634373	rs35051342	$1.4 \times 10^{-9}$	94166	0.885	rs2030323	$6.0 \times 10^{-11}$	23563607	Obesity	BDNF
11p14.1	27634373	rs35051342	$1.4 \times 10^{-9}$	94166	0.885	rs2030323	$6.0 \times 10^{-10}$	23563607	Body mass index	BDNF
11p14.1	27634373	rs35051342	$1.4 \times 10^{-9}$	94166	0.885	rs2030323	$4.0 \times 10^{-16}$	22344221	Body mass index	BDNF
12q13.12	50250111	rs7306275	$1.2 \times 10^{-8}$	-2643	0.868	rs7138803	$1.0 \times 10^{-20}$	23563607	Obesity	LOC144233
12q13.12	50250111	rs7306275	$1.2 \times 10^{-8}$	-2643	0.868	rs7138803	$2.0 \times 10^{-9}$	23563607	Body mass index	LOC144233
12q13.12	50250111	rs7306275	$1.2 \times 10^{-8}$	-2643	0.868	rs7138803	$2.0 \times 10^{-17}$	20935630	Body mass index	FAIM2, FAIM2, BCDIN3D, BCDIN3D, FAIM2, BCDIN3D,
12q13.12	50250111	rs7306275	$1.2 \times 10^{-8}$	-2643	0.868	rs7138803	$8.0 \times 10^{-7}$	19557197	Waist circumference	FAIM2, FAIM2, BCDIN3D, BCDIN3D, FAIM2, BCDIN3D,
12q13.12	50250111	rs7306275	$1.2 \times 10^{-8}$	-2643	0.868	rs7138803	$2.0 \times 10^{-7}$	19079260	Weight	FAIM2, BCDIN3D, FAIM2
12q13.12	50250111	rs7306275	$1.2 \times 10^{-8}$	-2643	0.868	rs7138803	$1.0 \times 10^{-7}$	19079260	Body mass index	FAIM2
3p12.1	86944938	rs13068899	$1.3 \times 10^{-8}$	-94320	0.612	rs7628864	$3.0 \times 10^{-9}$	23449627	Pubertal anthropometrics	VGLL3
3p12.1	86944938	rs13068899	$1.3 \times 10^{-8}$	-94320	0.612	rs7628864	$3.0 \times 10^{-9}$	23449627	Prostate cancer (gene x gene interaction)	VGLL3
3p12.1	86944938	rs13068899	$1.3 \times 10^{-8}$	-50460	0.724	rs9757252	$5.0 \times 10^{-6}$	22219177	Prostate cancer (gene x gene interaction)	VGLL3
3p12.1	86944938	rs13068899	$1.3 \times 10^{-8}$	-28056	0.724	rs7642134	$4.0 \times 10^{-10}$	21102462	Menarche (age at onset)	VGLL3
9q31.3	114309935	rs10217747	$2.0 \times 10^{-8}$	-16301	0.946	rs10980926	$3.0 \times 10^{-6}$	23449627	Pubertal anthropometrics	ZNF483
9q31.3	114309935	rs10217747	$2.0 \times 10^{-8}$	-16301	0.946	rs10980926	$4.0 \times 10^{-11}$	21102462	Menarche (age at onset)	ZNF483
9q31.3	114309935	rs10217747	$2.0 \times 10^{-8}$	-8350	0.930	rs10441737	$4.0 \times 10^{-15}$	23599027	Menarche (age at onset)	ZNF483

8q21.11	78116067	rs10094574	$2.6 \times 10^{-8}$	-22230	0.757	rs7821178	$3.0 \times 10^{-9}$	21102462	Menarche (age at onset)	PXMP3
8q21.11	78116067	rs10094574	$2.6 \times 10^{-8}$	44112	0.917	rs7846385	$5.0 \times 10^{-8}$	18391951	Height	PXMP3, ZFHX4
8q21.11	78116067	rs10094574	$2.6 \times 10^{-8}$	62418	0.884	rs6473015	$7.0 \times 10^{-13}$	20881960	Height	PEX2

## Replication of GWAS Catalog Results



The following table shows, for each GWAS Catalog result for similar traits, our association test result for our best available proxy (distance < 100kb,  $r^2 > 0.8$ ).

region	position	our.name	our.pval	dist	rsqr	assay.name	pvalue	pubmed.id	trait	genes
1q23.3	165394882	rs466639	$2.9 \times 10^{-13}$	0	1.000	rs466639	$1.0 \times 10^{-13}$	21102462	Menarche (age at onset)	RXRG
1q25.2	177852580	rs633715	$6.3 \times 10^{-11}$	0	1.000	rs633715	$2.0 \times 10^{-8}$	21102462	Menarche (age at onset)	SEC16B
1q44	243835186	rs320320	0.0088	0	1.000	rs320320	$1.0 \times 10^{-7}$	23599027	Menarche (age at onset)	AKT3
2p25.3	614168	rs2947411	$5.2 \times 10^{-15}$	0	1.000	rs2947411	$2.0 \times 10^{-8}$	21102462	Menarche (age at onset)	TMEM18
2p16.1	56592083	rs17268785	$1.4 \times 10^{-5}$	0	1.000	rs17268785	$1.0 \times 10^{-10}$	21102462	Menarche (age at onset)	CCDC85A
2q22.2	142228509	rs12472911	0.00039	0	1.000	rs12472911	$2.0 \times 10^{-7}$	21102462	Menarche (age at onset)	LRP1B
2q24.1	157096776	rs17188434	0.00023	0	1.000	rs17188434	$1.0 \times 10^{-9}$	21102462	Menarche (age at onset)	NR4A2
2q33.1	199632565	rs12617311	$2.4 \times 10^{-6}$	0	1.000	rs12617311	$6.0 \times 10^{-13}$	21102462	Menarche (age at onset)	PLCL1
2q37.2	236539307	rs6431393	0.74	0	1.000	rs6431393	$4.0 \times 10^{-6}$	23667675	Menarche (age at onset)	AGAP1
3p21.31	49210732	rs7617480	0.00040	0	1.000	rs7617480	$3.0 \times 10^{-8}$	21102462	Menarche (age at onset)	KLHDC8B
3p21.31	50093209	rs6762477	0.00089	0	1.000	rs6762477	$2.0 \times 10^{-8}$	21102462	Menarche (age at onset)	RBM6
3p12.1	86916882	rs7642134	$3.6 \times 10^{-7}$	0	1.000	rs7642134	$4.0 \times 10^{-10}$	21102462	Menarche (age at onset)	VGLL3
3q13.32	117574822	rs6438424	$4.1 \times 10^{-13}$	0	1.000	rs6438424	$1.0 \times 10^{-13}$	21102462	Menarche (age at onset)	Intergenic
3q21.3	127895226	rs2687729	0.00045	0	1.000	rs2687729	$1.0 \times 10^{-7}$	21102462	Menarche (age at onset)	EEFSEC
3q22.1	132610752	rs6439371	$3.7 \times 10^{-6}$	0	1.000	rs6439371	$1.0 \times 10^{-8}$	21102462	Menarche (age at onset)	TMEM108, NPHP3
3q26.1	160820524	rs4557202	0.78	0	1.000	rs4557202	$2.0 \times 10^{-6}$	23599027	Menarche (age at onset)	B3GALNT1
3q27.1	184010048	rs3914188	0.0049	0	1.000	rs3914188	$3.0 \times 10^{-7}$	21102462	Menarche (age at onset)	ECE2
3q27.2	185629568	rs2002675	$5.9 \times 10^{-7}$	0	1.000	rs2002675	$1.0 \times 10^{-9}$	21102462	Menarche (age at onset)	TRA2B, ETV5
5q13.1	67194469	rs10940138	0.24	0	1.000	rs10940138	$4.0 \times 10^{-7}$	23599027	Menarche (age at onset)	PIK3R1
5q31.1	133849177	rs13187289	0.00068	0	1.000	rs13187289	$2.0 \times 10^{-10}$	21102462	Menarche (age at onset)	PHF15
5q31.2	137707315	rs757647	0.28	0	1.000	rs757647	$5.0 \times 10^{-8}$	21102462	Menarche (age at onset)	KDM3B
6q16.2	100208438	rs4840086	0.00011	0	1.000	rs4840086	$2.0 \times 10^{-8}$	21102462	Menarche (age at onset)	PRDM13, MCHR2
6q16.3	105378954	rs7759938	$1.4 \times 10^{-56}$	0	1.000	rs7759938	$5.0 \times 10^{-60}$	21102462	Menarche (age at onset)	LIN28B
6q16.3	105378954	rs7759938	$1.4 \times 10^{-56}$	0	1.000	rs7759938	$7.0 \times 10^{-9}$	19448620	Menarche (age at onset)	LIN28B
6q16.3	105400837	rs314280	$2.1 \times 10^{-51}$	0	1.000	rs314280	$2.0 \times 10^{-14}$	19448622	Menarche (age at onset)	LIN28B, HACE1, E3 ubiquitin protein ligase 1, BVES, POPDC3
6q16.3	105407999	rs314276	$1.2 \times 10^{-50}$	0	1.000	rs314276	$4.0 \times 10^{-16}$	19448623	Menarche (age at onset)	LIN28B
6q16.3	105443189	rs364663	$1.9 \times 10^{-45}$	0	1.000	rs364663	$5.0 \times 10^{-7}$	23667675	Menarche (age at onset)	LIN28B
6q22.32	126767600	rs1361108	$1.6 \times 10^{-9}$	0	1.000	rs1361108	$2.0 \times 10^{-8}$	21102462	Menarche (age at onset)	C6orf173, TRMT11
7p14.1	41470093	rs1079866	$1.0 \times 10^{-7}$	0	1.000	rs1079866	$6.0 \times 10^{-14}$	21102462	Menarche (age at onset)	INHBA
7q11.22	67188788	rs7807441	0.67	0	1.000	rs7807441	$3.0 \times 10^{-6}$	23599027	Menarche (age at onset)	FLJ13195
8p23.3	1244224	rs17669535	0.22	0	1.000	rs17669535	$6.0 \times 10^{-7}$	23599027	Menarche (age at onset)	DLGAP2
8q21.11	77611625	rs4735738	$9.1 \times 10^{-7}$	0	1.000	rs4735738	$5.0 \times 10^{-6}$	23667675	Menarche (age at onset)	ZFHX4
8q21.11	78093837	rs7821178	$1.1 \times 10^{-6}$	0	1.000	rs7821178	$3.0 \times 10^{-9}$	21102462	Menarche (age at onset)	PXMP3
9q31.2	108967088	rs2090409	$5.0 \times 10^{-34}$	0	1.000	rs2090409	$2.0 \times 10^{-33}$	21102462	Menarche (age at onset)	TMEM38B
9q31.2	108967088	rs2090409	$5.0 \times 10^{-34}$	0	1.000	rs2090409	$2.0 \times 10^{-9}$	19448620	Menarche (age at onset)	TMEM38B, SLC44A1, FKTN, FSD1L, TAL2, ZNF462
9q31.3	114293634	rs10980926	$2.6 \times 10^{-8}$	0	1.000	rs10980926	$4.0 \times 10^{-11}$	21102462	Menarche (age at onset)	ZNF483
9q31.3	114301585	rs10441737	$3.1 \times 10^{-8}$	0	1.000	rs10441737	$4.0 \times 10^{-15}$	23599027	Menarche (age at onset)	ZNF483
9q31.3	114303679	rs7873730	$2.5 \times 10^{-7}$	0	1.000	rs7873730	$2.0 \times 10^{-6}$	23599027	Menarche (age at onset)	ZNF483

11p15.4	8639200	rs4929923	6.3×10 <sup>-6</sup>	0	1.000	rs4929923	1.0×10 <sup>-8</sup>	21102462	Menarche (age at onset)	TRIM66
11p15.2	13293905	rs900145	9.7×10 <sup>-7</sup>	0	1.000	rs900145	2.0×10 <sup>-8</sup>	21102462	Menarche (age at onset)	ARNTL
11p15.2	15457467	rs7114467	0.090	0	1.000	rs7114467	9.0×10 <sup>-6</sup>	23667675	Menarche (age at onset)	INSC
11p11.2	46052575	rs16938437	0.88	0	1.000	rs16938437	6.0×10 <sup>-8</sup>	21102462	Menarche (age at onset)	PHF21A
11q14.1	78095373	rs10899489	0.00028	0	1.000	rs10899489	8.0×10 <sup>-9</sup>	21102462	Menarche (age at onset)	GAB2
11q22.1	100406640	rs12800752	0.19	0	1.000	rs12800752	3.0×10 <sup>-6</sup>	23667675	Menarche (age at onset)	ARHGAP42
11q23.3	117388932	rs11216435	0.18	0	1.000	rs11216435	3.0×10 <sup>-6</sup>	23599027	Menarche (age at onset)	DSCAML1
11q24.1	122870683	rs6589964	3.3×10 <sup>-7</sup>	0	1.000	rs6589964	2.0×10 <sup>-12</sup>	21102462	Menarche (age at onset)	BSX
11q24.2	126607580	rs7114000	0.039	0	1.000	rs7114000	2.0×10 <sup>-6</sup>	23667675	Menarche (age at onset)	KIRREL3
13q34	112181437	rs9555810	3.4×10 <sup>-6</sup>	0	1.000	rs9555810	6.0×10 <sup>-8</sup>	21102462	Menarche (age at onset)	C13orf16, ARHGEF7
14q13.3	36989419	rs2076751	0.083	0	1.000	rs2076751	7.0×10 <sup>-6</sup>	23667675	Menarche (age at onset)	NKX2-1
14q31.3	85963856	rs8014131	0.46	0	1.000	rs8014131	3.0×10 <sup>-7</sup>	23599027	Menarche (age at onset)	FLRT2
14q32.2	101032217	rs6575793	0.0022	0	1.000	rs6575793	1.0×10 <sup>-8</sup>	21102462	Menarche (age at onset)	BEGAIN
15q21.2	51545454	rs12907866	0.15	0	1.000	rs12907866	4.0×10 <sup>-7</sup>	23599027	Menarche (age at onset)	CYP19A1
15q21.3	54380200	rs11071033	0.0045	0	1.000	rs11071033	3.0×10 <sup>-6</sup>	23599027	Menarche (age at onset)	UNC13C
15q22.2	60781513	rs3743266	0.00011	0	1.000	rs3743266	8.0×10 <sup>-7</sup>	21102462	Menarche (age at onset)	RORA
15q22.2	60900963	rs980000	0.45	0	1.000	rs980000	2.0×10 <sup>-6</sup>	23599027	Menarche (age at onset)	RORA
15q22.2	60937402	rs339978	0.22	0	1.000	rs339978	2.0×10 <sup>-6</sup>	23599027	Menarche (age at onset)	RORA
15q23	67702907	rs7359257	0.20	0	1.000	rs7359257	2.0×10 <sup>-6</sup>	21102462	Menarche (age at onset)	IQCH
16p13.12	14388305	rs1659127	1.4×10 <sup>-11</sup>	0	1.000	rs1659127	4.0×10 <sup>-9</sup>	21102462	Menarche (age at onset)	MKL2
16q12.2	53820527	rs9939609	1.5×10 <sup>-11</sup>	0	1.000	rs9939609	3.0×10 <sup>-8</sup>	21102462	Menarche (age at onset)	FTO
16q22.1	69588572	rs1364063	5.4×10 <sup>-10</sup>	0	1.000	rs1364063	2.0×10 <sup>-8</sup>	21102462	Menarche (age at onset)	IFAT5
16q23.2	81473649	rs310008	0.48	0	1.000	rs310008	4.0×10 <sup>-6</sup>	23667675	Menarche (age at onset)	CMIP
17q21.33	49613785	rs9635759	1.3×10 <sup>-10</sup>	0	1.000	rs9635759	7.0×10 <sup>-13</sup>	21102462	Menarche (age at onset)	CA10
18q12.3	42956672	rs2243803	0.14	0	1.000	rs2243803	3.0×10 <sup>-7</sup>	21102462	Menarche (age at onset)	SLC14A2
18q21.1	44752238	rs1398217	1.7×10 <sup>-9</sup>	0	1.000	rs1398217	2.0×10 <sup>-13</sup>	21102462	Menarche (age at onset)	FUSSEL18
19p13.2	10000322	rs1862471	1.1×10 <sup>-6</sup>	0	1.000	rs1862471	2.0×10 <sup>-7</sup>	21102462	Menarche (age at onset)	OLFM2
19p13.11	18817903	rs10423674	0.0013	0	1.000	rs10423674	6.0×10 <sup>-9</sup>	21102462	Menarche (age at onset)	CRTC1
20p12.1	17122593	rs852069	1.3×10 <sup>-5</sup>	0	1.000	rs852069	3.0×10 <sup>-8</sup>	21102462	Menarche (age at onset)	PCSK2
5q35.2	176378574	rs365132	0.22	0	1.000	rs365132	8.0×10 <sup>-14</sup>	19448621	Menarche and menopause (age at onset)	UIMC1
6p24.2	10897488	rs2153157	0.066	0	1.000	rs2153157	5.0×10 <sup>-8</sup>	19448621	Menarche and menopause (age at onset)	GCM2, SYCP2L
6q16.3	105407662	rs314277	1.1×10 <sup>-22</sup>	0	1.000	rs314277	3.0×10 <sup>-13</sup>	19448621	Menarche and menopause (age at onset)	LIN28B
9q31.2	108936674	rs7861820	8.5×10 <sup>-14</sup>	0	1.000	rs7861820	3.0×10 <sup>-9</sup>	19448621	Menarche and menopause (age at onset)	Intergenic
19q13.42	55819845	rs1172822	0.55	0	1.000	rs1172822	2.0×10 <sup>-19</sup>	19448621	Menarche and menopause (age at onset)	BRSK1
20p12.3	5948227	rs16991615	0.23	0	1.000	rs16991615	1.0×10 <sup>-21</sup>	19448621	Menarche and menopause (age at onset)	TRMT6, MCM8

## Nearby Nonsynonymous SNPs

region	position	our.name	our.pval	dist	rsqr	assay.name	gene	aa.chg
14q32.2	100846991	rs12894936	1.4×10 <sup>-14</sup>	716	0.733	rs2273800	WDR25	H149R
18q21.1	44799515	rs2048523	1.1×10 <sup>-11</sup>	-26133	0.542	rs9956387	SKOR2	C725S
16q22.1	69735271	rs6499244	8.7×10 <sup>-11</sup>	47584	0.507	rs3811348	NOB1	R231Q
11p14.1	27634373	rs35051342	1.4×10 <sup>-9</sup>	45543	0.820	rs6265	BDNF	V148M
9q33.3	127373463	rs4072705	9.7×10 <sup>-9</sup>	-142572	0.588	rs10760365	GPR144	V750M
9q33.3	127373463	rs4072705	9.7×10 <sup>-9</sup>	-141689	0.581	rs1570580	GPR144	R836G
9q33.3	127373463	rs4072705	9.7×10 <sup>-9</sup>	192915	0.520	rs7874348	OLFML2A	T309A
2p13.1	73739848	rs35273932	2.1×10 <sup>-8</sup>	59784	0.712	rs45501594	ALMS1	T3542S
6p21.1	41893323	rs9349203	4.7×10 <sup>-8</sup>	-138753	0.680	rs200179087	PRICKLE4	?286?
6p21.1	41893323	rs9349203	4.7×10 <sup>-8</sup>	-138753	0.680	rs200179087	TOMM6	?-287?
6p21.1	41893323	rs9349203	4.7×10 <sup>-8</sup>	-138750	0.675	rs140326303	PRICKLE4	A287L
6p21.1	41893323	rs9349203	4.7×10 <sup>-8</sup>	-138750	0.675	rs140326303	TOMM6	?-286?
6p21.1	41893323	rs9349203	4.7×10 <sup>-8</sup>	10459	0.814	rs1051130	CCND3	S259A

## Nearby Expression QTLs

region	position	our.name	our.pval	dist	rsqr	assay.name	eqtl.dist	eqtl.gene	eqtl.pval	eqtl.rsqr	tissue	pubmed.id
14q32.2	100846991	rs12894936	1.4×10 <sup>-14</sup>	5829	0.703	rs11624049	-1216754	BCL11B	2.1×10 <sup>-5</sup>	0.063	B-Cell	22446964
14q23.1	60890422	rs1254309	1.1×10 <sup>-12</sup>	13335	0.671	rs1254319	191287	PPM1A	0.00016	0.179	T-cell	19644074
14q23.1	60890422	rs1254309	1.1×10 <sup>-12</sup>	13335	0.671	rs1254319	841063	RTN1	0.00011	0.186	Fibroblast	19644074
11q24.1	122819119	rs7113019	7.1×10 <sup>-12</sup>	28718	0.609	rs6589963	999566	OR10S1	0.00013	0.183	T-cell	19644074
3p12.1	86944938	rs13068899	1.3×10 <sup>-8</sup>	23554	0.649	rs13074417	18631	VGLL3	0.00044	0.157	Fibroblast	19644074
9q31.3	114309935	rs10217747	2.0×10 <sup>-8</sup>	-8350	0.930	rs10441737	-211383	OR2K2	0.00015	0.050	B-Cell	22446964



## Nearby Clinical Variants

source	region	our.name	our.pval	dist	rsqr	assay.name	gene	phenotype	accession
clinvar	11p14.1	rs35051342	$1.4 \times 10^{-9}$	45543	0.820	rs6265	BDNF	Bulimia nervosa 2	NCBI curation
clinvar	11p14.1	rs35051342	$1.4 \times 10^{-9}$	45543	0.820	rs6265	BDNF	Obsessive-compulsive disorder	Human Phenotype OntologyHP:0000722
clinvar	11p14.1	rs35051342	$1.4 \times 10^{-9}$	45543	0.820	rs6265	BDNF	Bulimia nervosa 1	NCBI curation
clinvar	11p14.1	rs35051342	$1.4 \times 10^{-9}$	45543	0.820	rs6265	BDNF	Congenital central hypoventilation	SNOMED CT399040002

## Regional Association Plots

