

Supplemental Table 1 – Iterative modeling results for appointment and medication non-adherence and the outcome of graft loss

Model Iterations	No Show Rate $\geq 12\%$				Medication Possession Ratio $< 80\%$			
	HR	95% CI	p-value	AIC	HR	95% CI	p-value	AIC
Unadjusted	1.714	1.47-2.00	<0.001	15726	2.64	2.32-3.00	<0.001	15546
Adjusted for Baseline Covariates*	2.037	1.72-2.41	<0.001	15567	2.634	2.31-3.00	<0.001	15414
Adjusted for Baseline & Outcomes ^{*,†}	1.965	1.65-2.34	<0.001	15534	2.631	2.30-3.01	<0.001	15375
Adjusted for Baseline, Outcomes and Adherence Covariates ^{*,†,^}	1.650	1.38-1.97	<0.001	15344	2.508	1.38-1.97	<0.001	15344

[†]Includes age, gender, race, marital status, comorbidities, donor characteristics, immunologic risks and baseline immunosuppression

[†]Includes rejection and delayed graft function

[^]Includes medication and appointment non-adherence in models

Supplemental Table 2 – Iterative modeling outcomes, mirroring Table 3, for the dataset that included missing data estimates using multiple imputation (N=4,646)

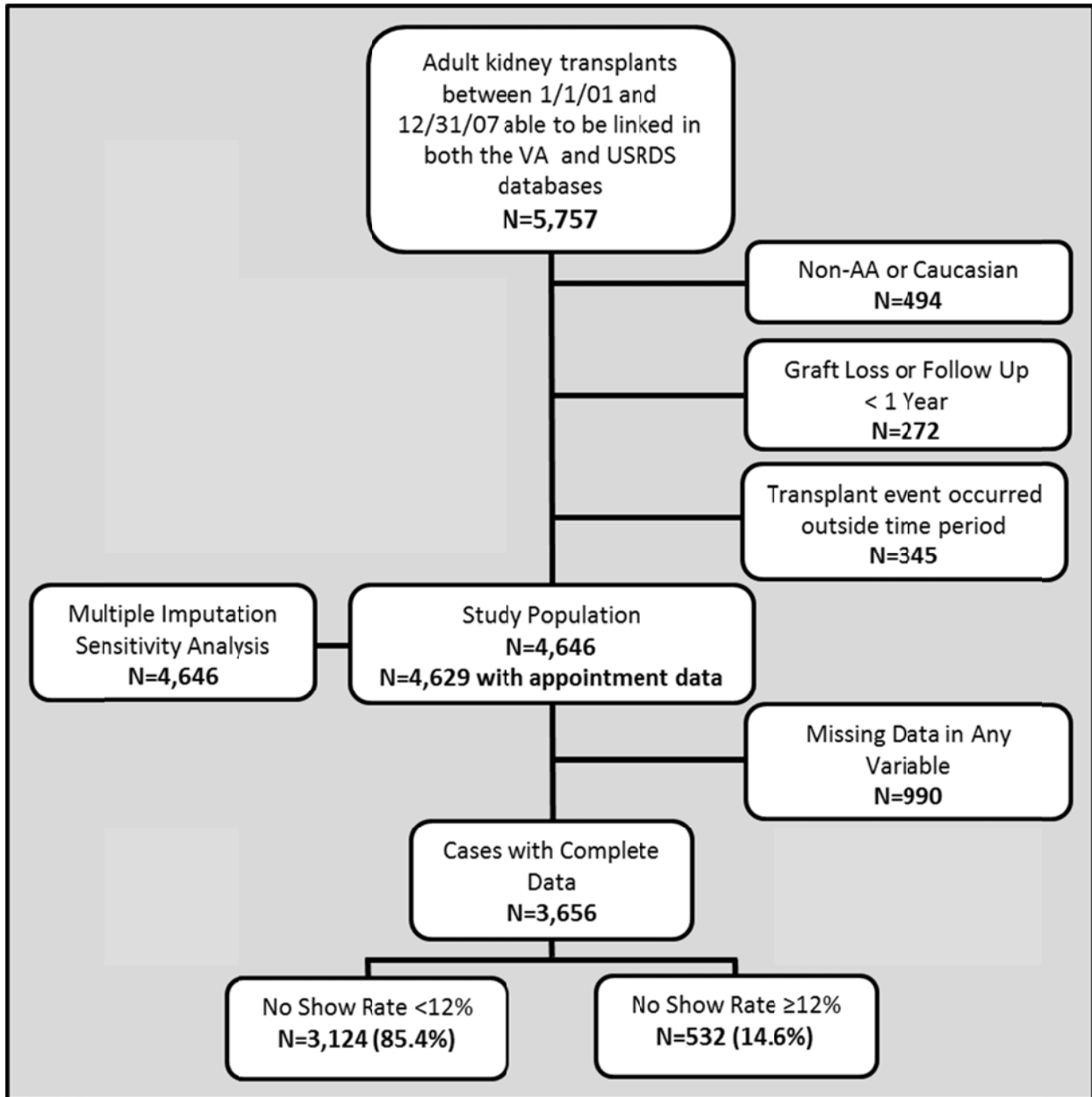
Model Iterations	No Show Rate $\geq 12\%$			Medication Possession Ratio $< 80\%$		
	HR	95% CI	p-value	HR	95% CI	p-value
Unadjusted	1.772	1.55-2.03	< 0.001	2.511	2.23-2.82	< 0.001
Adjusted for Baseline Covariates*	2.052	1.77-2.38	< 0.001	2.485	2.21-2.80	< 0.001
Adjusted for Baseline & Outcomes*,+	1.997	1.72-2.32	< 0.001	2.483	2.21-2.80	< 0.001
Adjusted for Baseline, Outcomes & Adherence Covariates*,+^	1.734	1.49-2.02	< 0.001	2.365	2.10-2.66	< 0.001

*Includes age, gender, race, marital status, comorbidities, donor criteria, immunologic risks and baseline immunosuppression

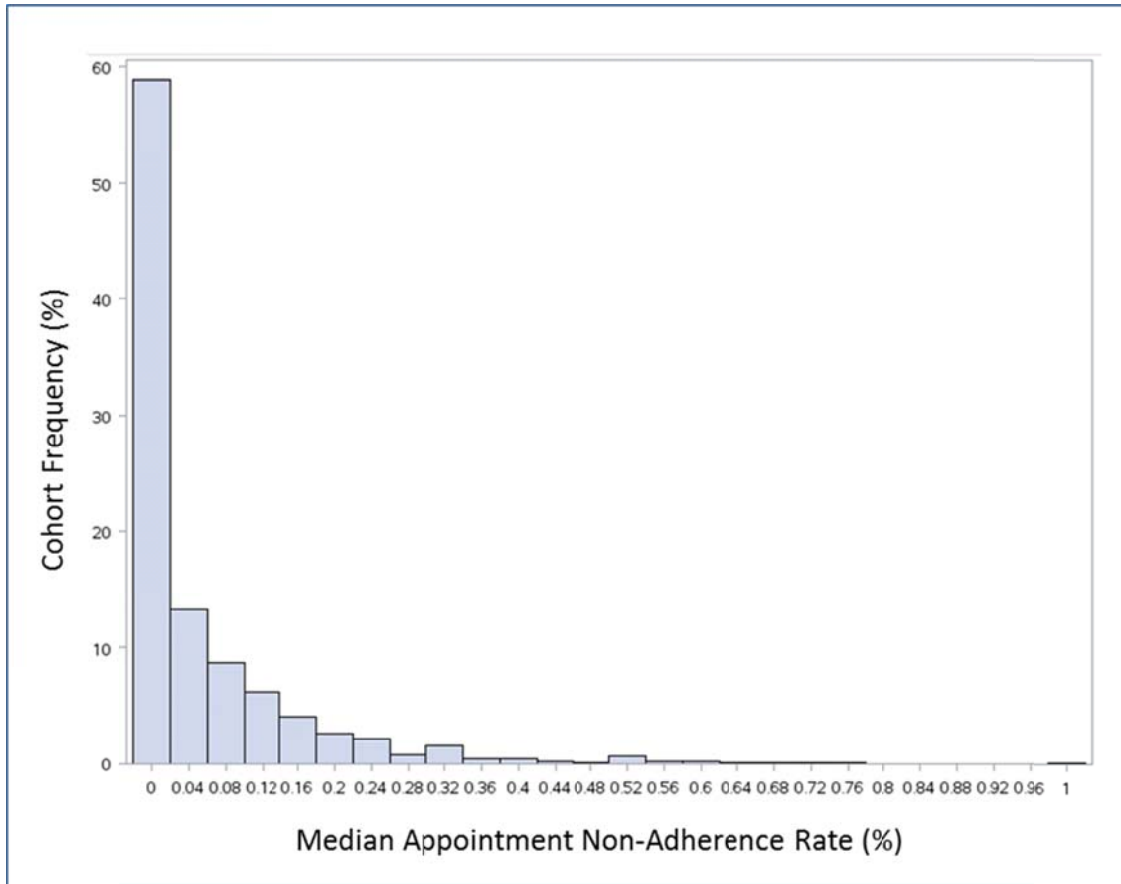
+Include rejection and delayed graft function

^Include both medication and appointment non-adherence in models

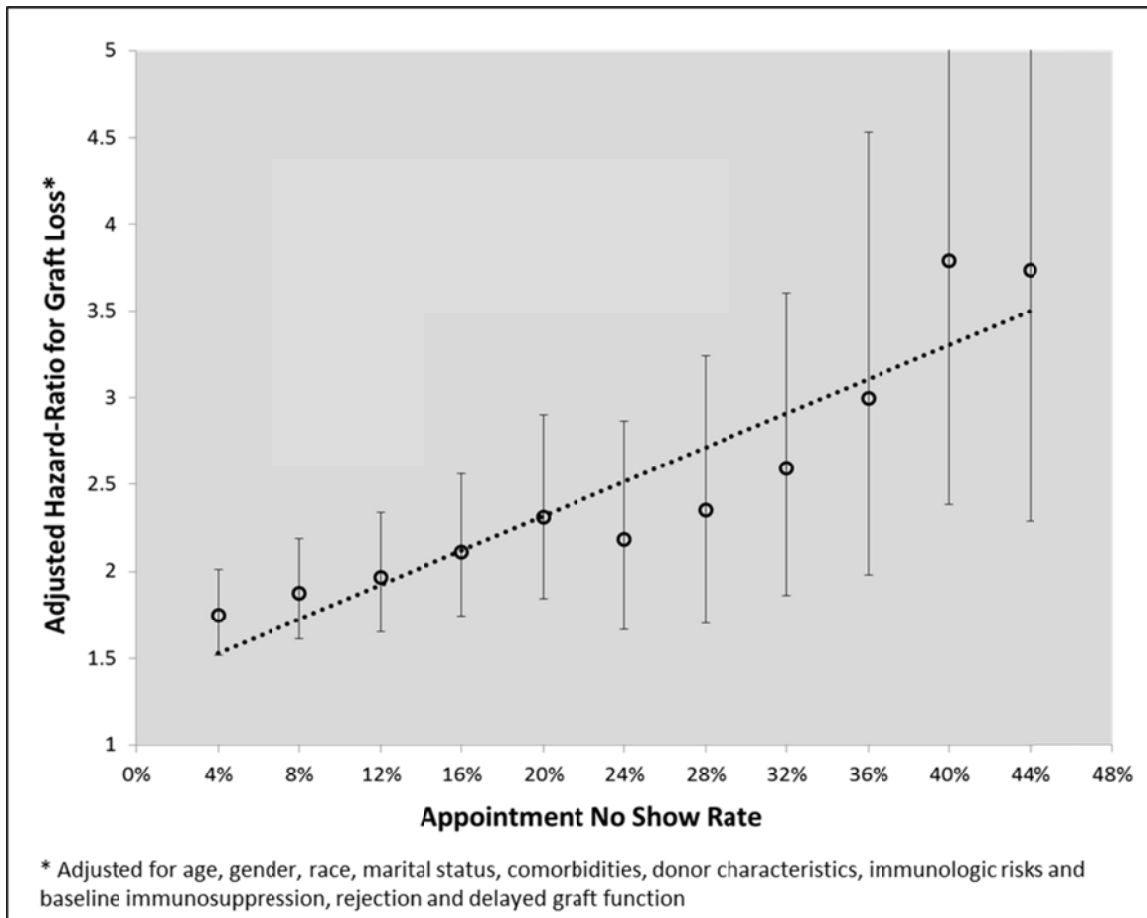
Supplemental Figure 1 – Consort diagram describing how the study population and cohorts were developed



Supplemental Figure 2 – Histogram displaying the frequency distribution of the aggregated median appointment non-adherence for each patient during the follow up period



Supplemental Figure 3 – Dose-response curve comparing median appointment non-adherence rates to adjusted risk of graft loss



Supplemental Figure 4 – Correlation between appointment non-adherence and medication non-adherence by comparing median rates based on ventiles

