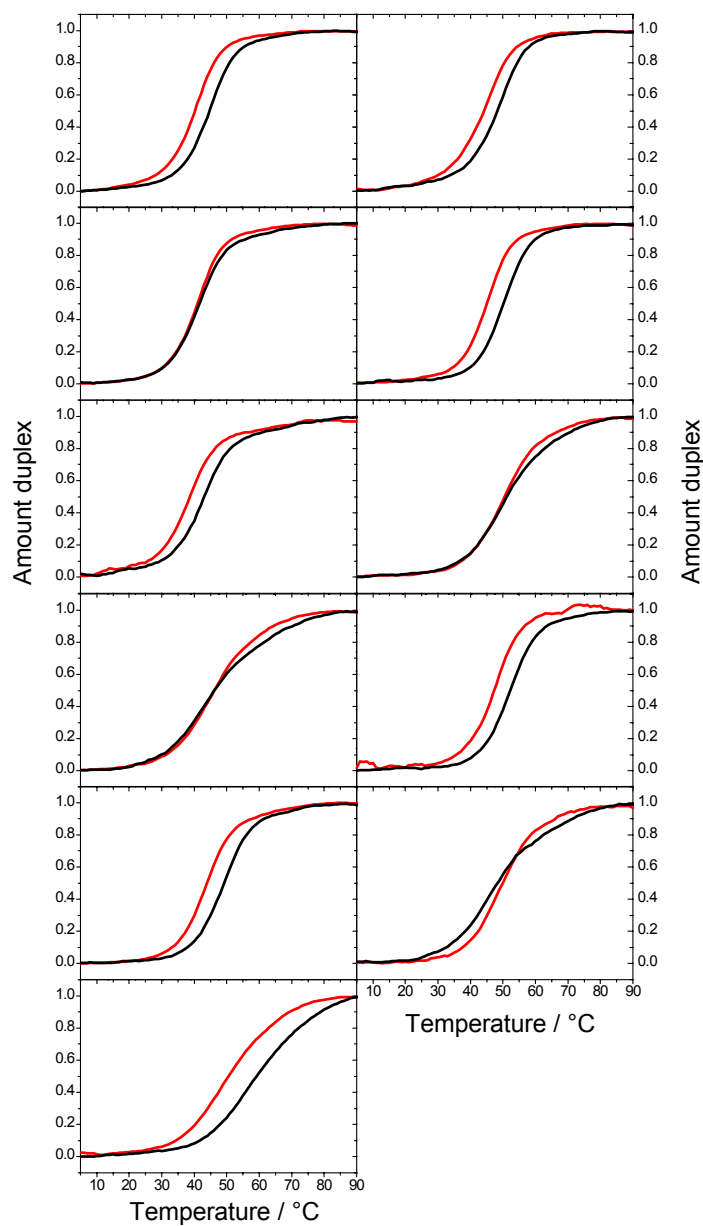
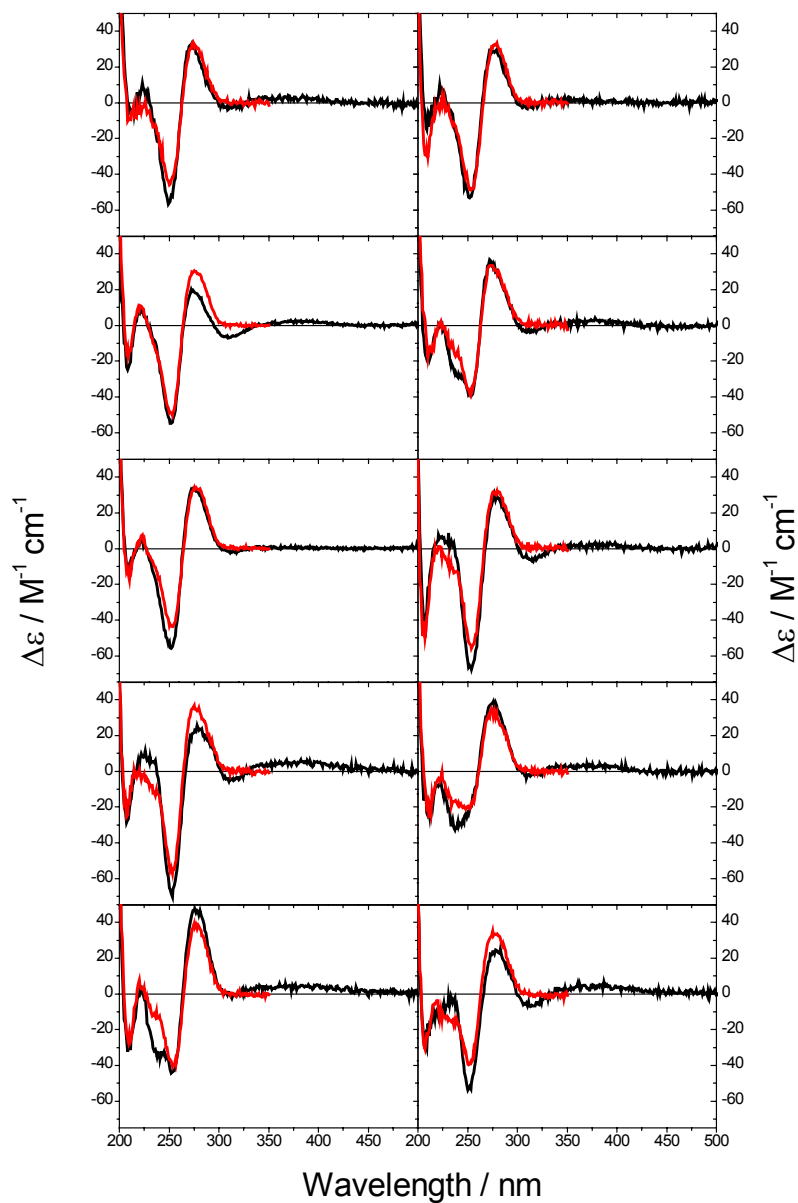


SUPPLEMENTARY MATERIAL



S1. UV melting profiles of DNA-duplexes containing tC (black line) and only normal DNA bases (red line). Left column from the top: TA, AA, TT, GA, CT, and CA(NMR); right column from the top: TG, CA, GG, CC, and GC; (names as in Table 1). Measurements were performed in a phosphate buffer (50 mM Na⁺, pH 7.5) at a duplex concentration of 5 μ M.



S2. Circular dichroism of the ten DNA-duplexes containing one tC (black line) and only normal DNA bases (red line). Left column from the top: TA, AA, TT, GA, and CT; right column from the top: TG, CA, GG, CC, and GC (names as in Table 1). Measurements were performed in a phosphate buffer (50 mM Na⁺, pH 7.5) at 25°C. The concentration of the duplex in CD experiments was 2.5 μM. M on Δε-axis refers to total concentration of single strands (5 μM).