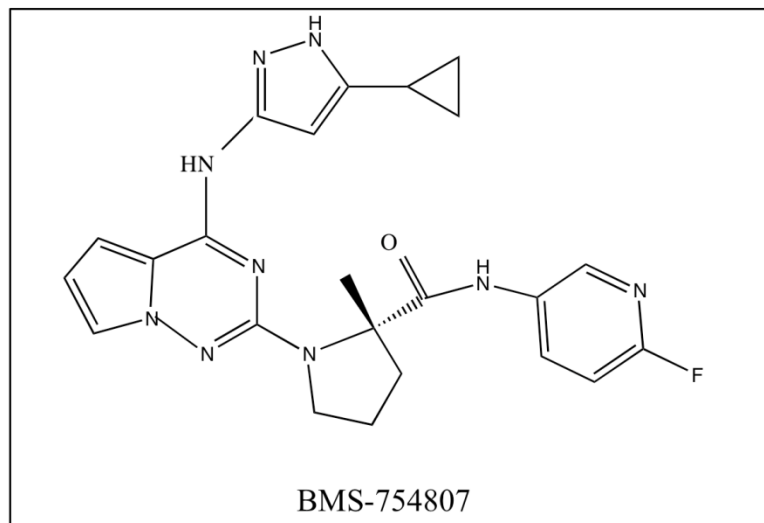
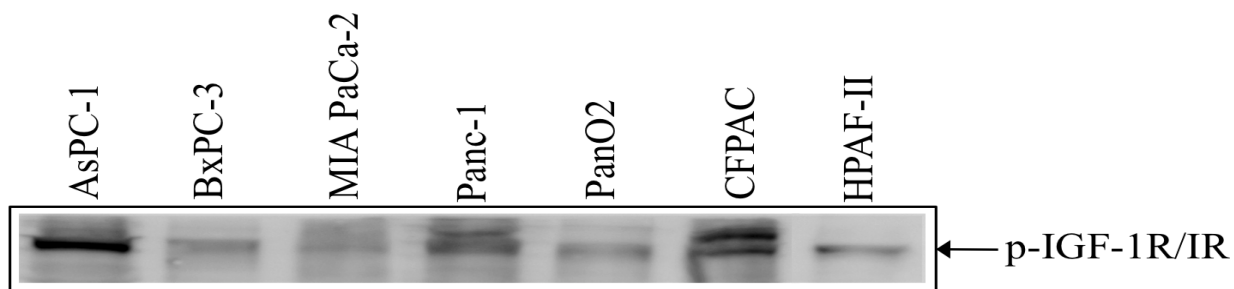


Augmentation of response to nab-paclitaxel by inhibition of insulin-like growth factor (IGF) signaling in preclinical pancreatic cancer models

Supplementary Material



Supplemental Figure S1: Chemical structure of BMS-754807. Molecular weight: 461.49



Supplemental Figure S2: Expression of phospho-IGF-1R/IR in PDAC cell lines. Total cell extracts of PDAC cells were analyzed by immunoblotting for phospho-IGF-1R/IR protein.