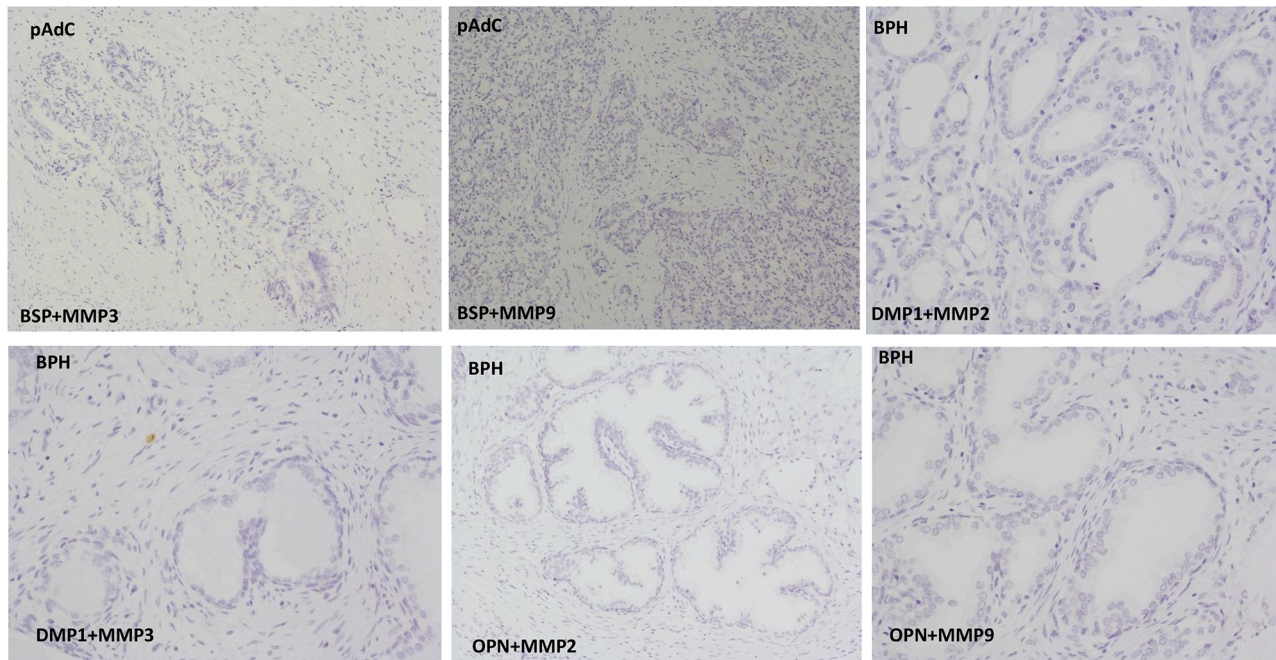


Expression of the SIBLINGs and their MMP partners in human benign and malignant prostate neoplasms

SUPPLEMENTARY FIGURE



Supplementary Figure S1: iPLA shows negativity in mismatch SIBLING-MMP pairs in prostate neoplasms, compared to result in Figure 5, further validating the specificity of the SIBLING-cognate MMP interaction previously reported in other biologic systems. (Mag. 10X)