

SUPPLEMENTARY ONLINE MATERIAL FOR:

**Versican Deficiency Significantly Reduces Lung Inflammatory Response
Induced by Poly I:C Stimulation**

Inkyung Kang, Ingrid A. Harten, Mary Y. Chang, Kathleen R. Braun, Alyssa Sheih,
Mary P. Nivison, Pamela Y. Johnson, Gail Workman, Gernot Kaber, Stephen P. Evanko,
Christina K. Chan, Mervyn J. Merrilees, Steven F. Ziegler, Michael G. Kinsella,
Charles W. Frevert, Thomas N. Wight

Supplementary Material:

Supplementary Table 1

Supplementary Figure 1

Supplementary Figure 2

Supplementary Figure 3

Supplementary Figure 4

Supplemental Table 1. Primers used for qPCR

Target	Fwd	Rev
Ccl2	TGCAGGTCCTGTCATGCTT	GAATGAGTAGCAGCAGGTGAGT
Cxcl1	AACCGAAGTCATAGCCACAC	TTTCTCCGTTACTTGGGGACA
Cxcl2	TGCAGGTCCTGTCATGCTT	GAATGAGTAGCAGCAGGTGAGT
IL10	ATTTGAATTCCCTGGGTGAGAAG	CACAGGGGAGAAATCGATGACA
IL1 β	ATACCTGTGGCCTTGGGCCT	TGCTTGGGATCCCACTCTCCAGC
IFN α	TCTGATGCAGCAGGTGGG	AGGGCTCTCCAGACTTCTGCTCTG
IFN γ	TCAGCAACAGCAAGGCGAAA	ATTGAATGCTTGGCGCTGGA

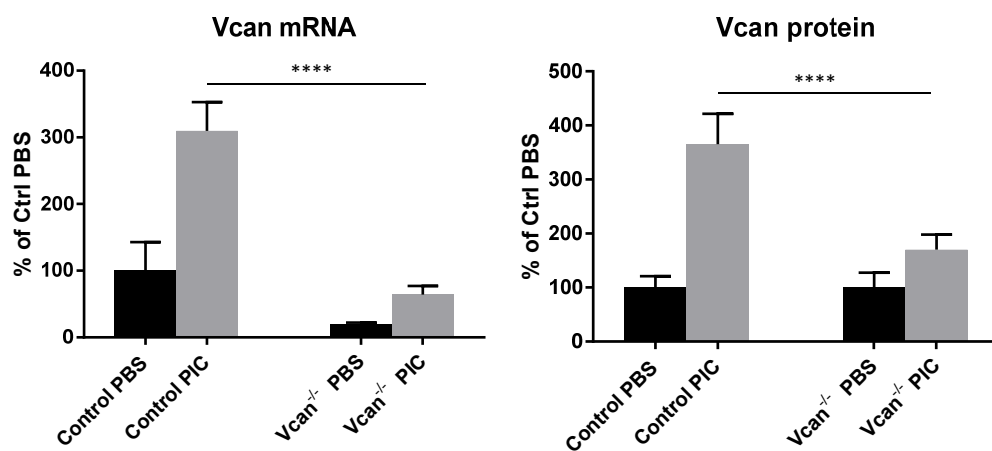
Supplementary Figure Legends

Suppl. Fig. 1. Versican mRNA abundance (all versican isoforms) and protein (densitometry of western blots included all bands > 250kDa) expressed as a percentage of control animals treated with PBS.

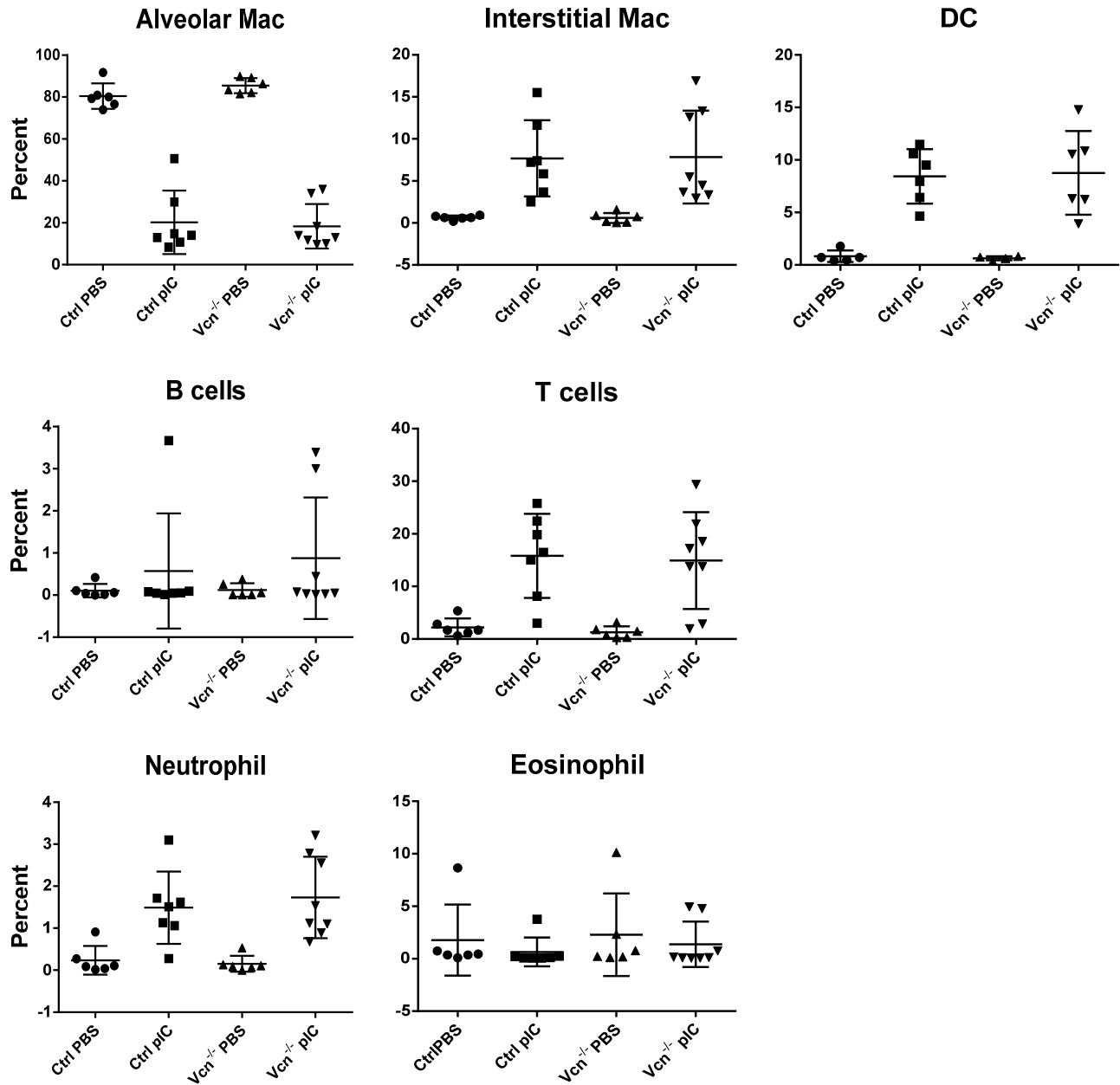
Suppl. Fig. 2. Flow cytometric analysis of subpopulations of cell types in BALF. Cell types are expressed as a percentage of total counts (A), and the absolute number of cell counts relative to total BAL cell counts (B). *Vcan*^{-/-} mice did not demonstrate significant differences in the proportional or the absolute number of cell counts of specific cell types in BALF in response to pIC instillation. Gating strategy for determination of specific cell type populations (C). Initial gating was made on total live cells which were > 99.5% positive for CD45.

Suppl. Fig. 3. Linear regression analysis of whole lung *Vcan* and cytokine/chemokine gene expression. *Vcan* gene expression levels correlated significantly with expression of the cytokines and chemokines: TNF α , IL1 β , Cxcl2, IFN α , IFN γ , and IL10 in whole lungs of mice. $P < 0.05$ in all cases.

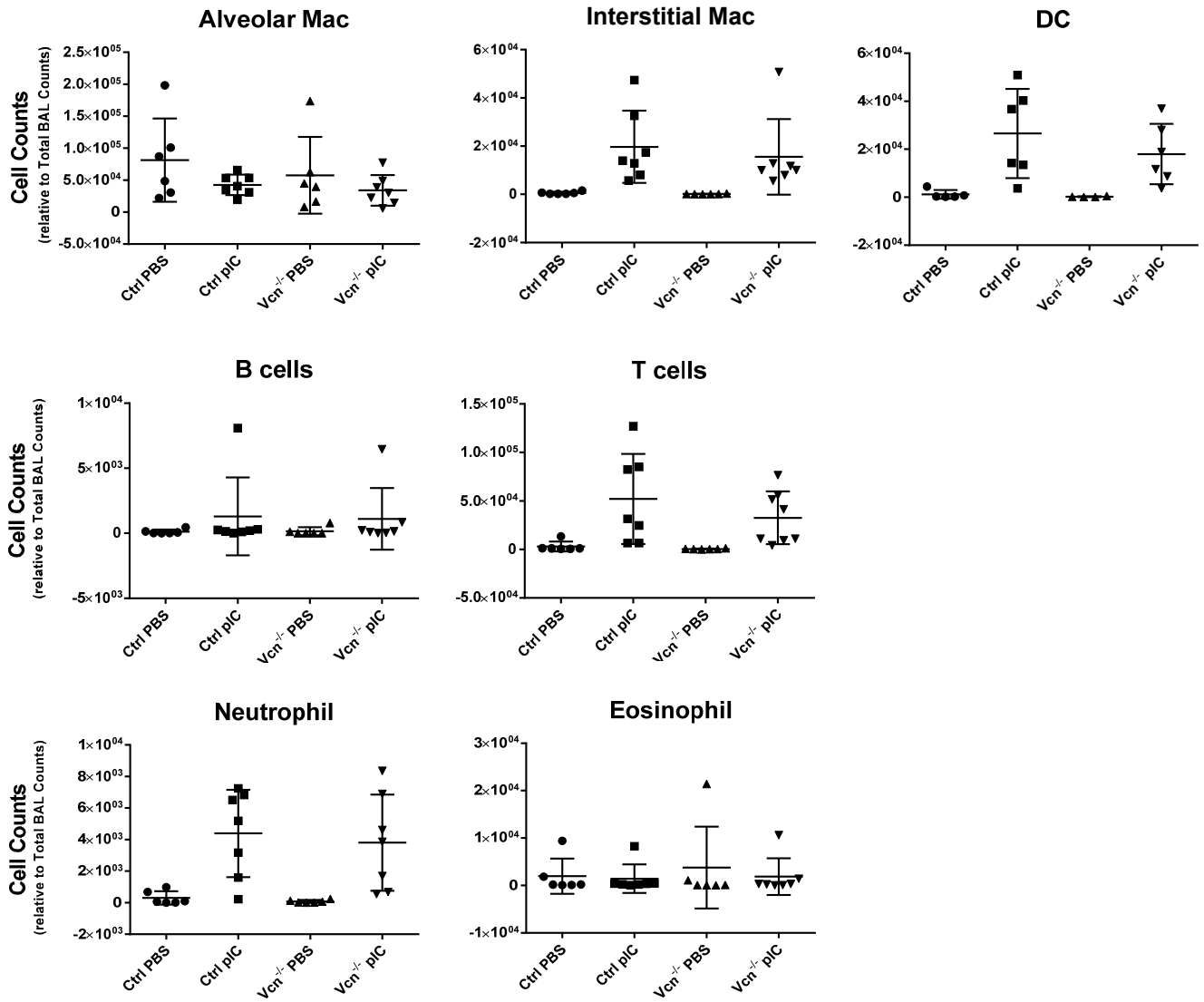
Suppl. Fig. 4. Poly I:C-induced HA cable formation in primary lung fibroblasts. In control (A) but not in *Vcan*^{-/-} (B) lung fibroblasts, poly I:C stimulation induced HA cable formation. HA (green), nuclei (blue).



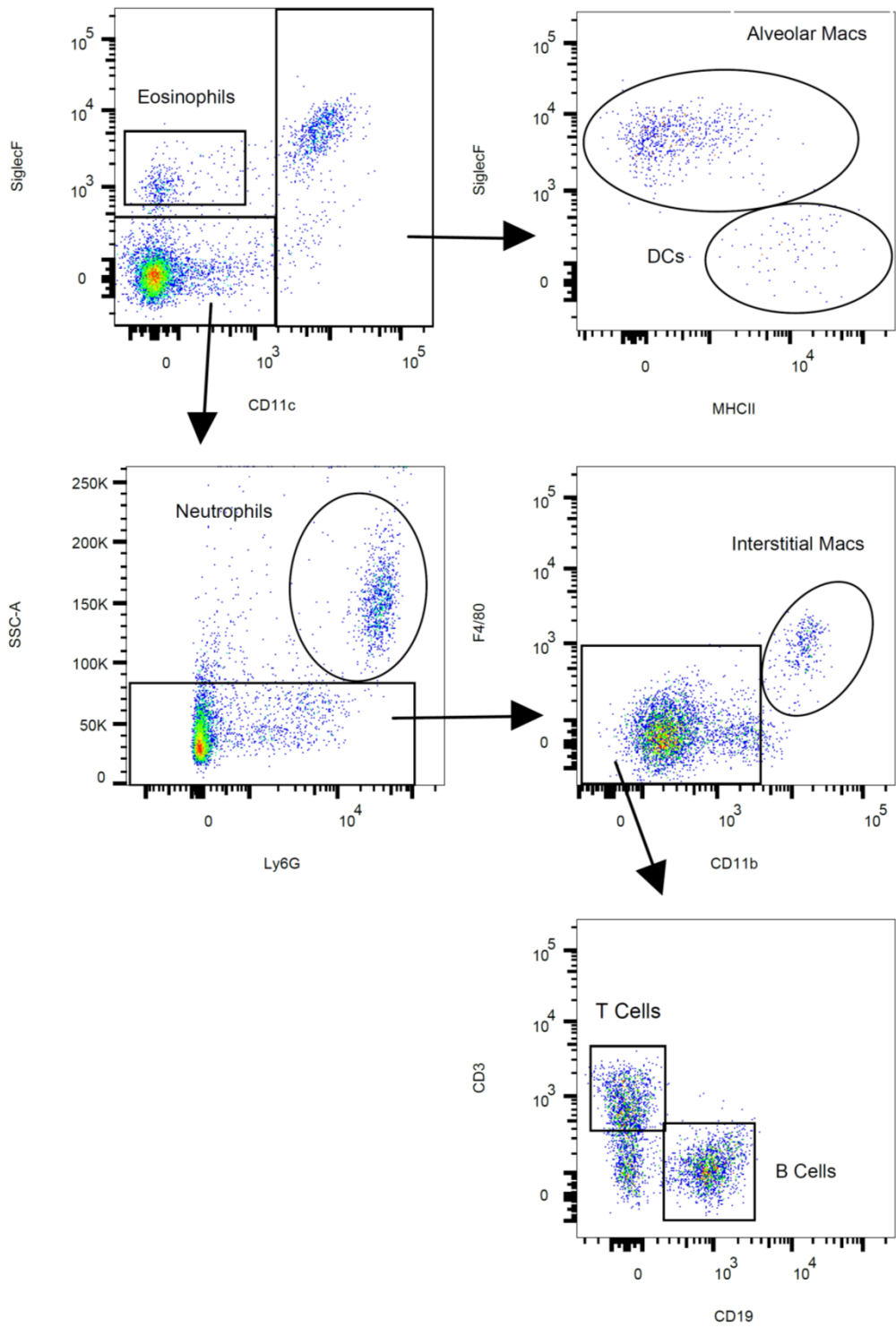
Supplementary Figure 1



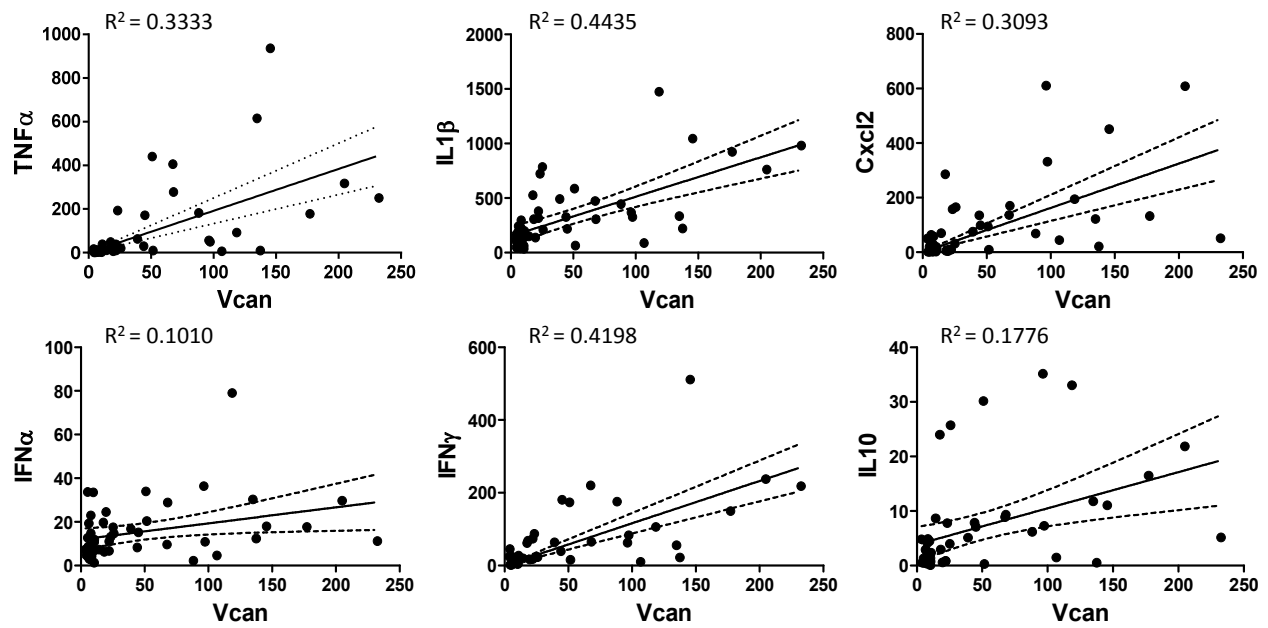
Supplementary Figure 2A



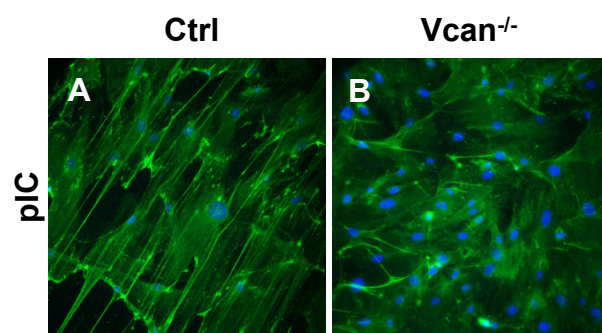
Supplementary Figure 2B



Supplementary Figure 2C



Supplementary Figure 3



Supplementary Figure 4