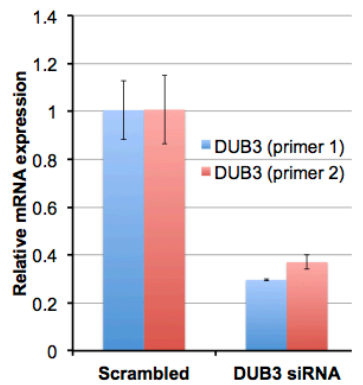


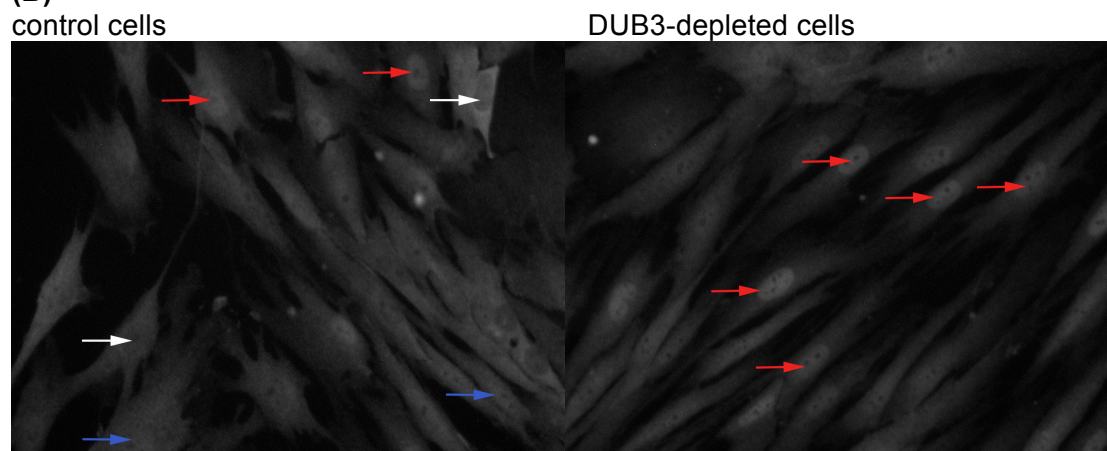
Supplemental Figure S5. YAP localization in BJ cells depleted of DUB3

(A)



BJ^{p53kd/p16kd/HRas} cells were seeded for 24h before being transfected with DUB3-specific siRNAs or scrambled controls. Transfected cells were fixed after 36h and stained with YAP antibody (Santa Cruz, sc-101199). qPCR was used to confirm the depletion of DUB3.

(B)



Representative images of BJ cells stained with anti-YAP treated as described in panel A. YAP localization was scored as: less YAP in the nucleus compared to the cytoplasm (e.g. white arrows); equal in cytoplasm and nucleus (e.g. blue arrows); and YAP higher in the nucleus (e.g. red arrows).

	number of cells		
	<u>less nuclear YAP</u>	<u>even distribution</u>	<u>more nuclear YAP</u>
control siRNA	118	120	84
DUB3 siRNA	54	239	177
	% of cells		
control siRNA	37	37	26
DUB3 siRNA	11	51	38

DUB3 depletion caused a significant shift towards nuclear YAP ($p < 0,0001$; Chi-square test).