

Predictive Value of Serum IFN- γ inducible Protein-10 and IFN- γ /IL-4 Ratio for Liver Fibrosis Progression in CHB Patients

Yadong Wang¹, Weiyang Yu¹, Chuan Shen¹, Wei Wang¹, Li Zhang¹, Fang Liu¹, Hui Sun¹, Yajuan Zhao², Honghao Che³, Caiyan Zhao^{1*}

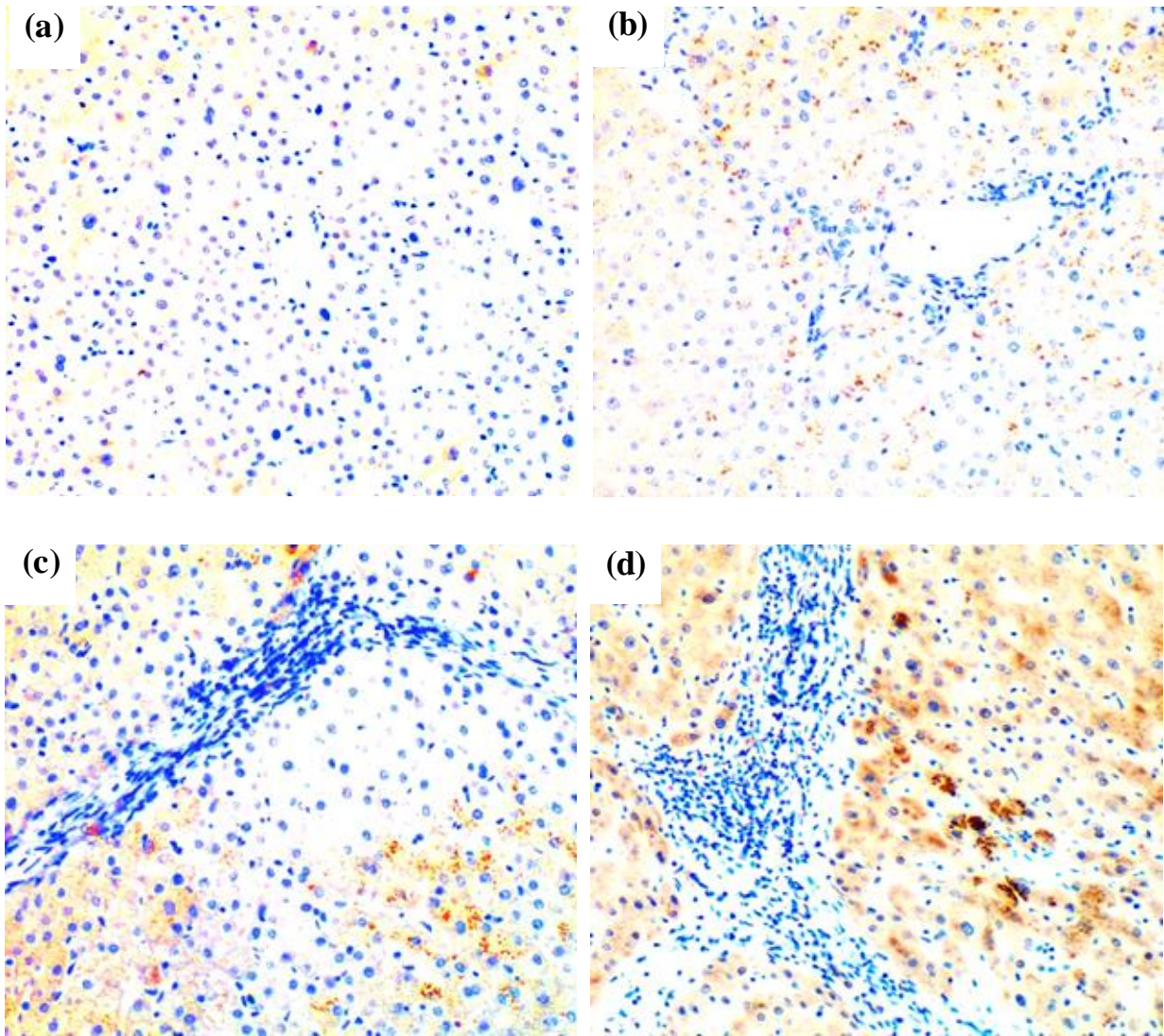
Suppl. figure legends

Suppl. Figure 1. Intrahepatic IP-10 expression. Representative micrographs of serial liver tissue sections from the four groups of CHB patient samples: F0 (a), F1–2 (b), F3–4 (c), and F5–6 (d). Magnifications: 200 \times

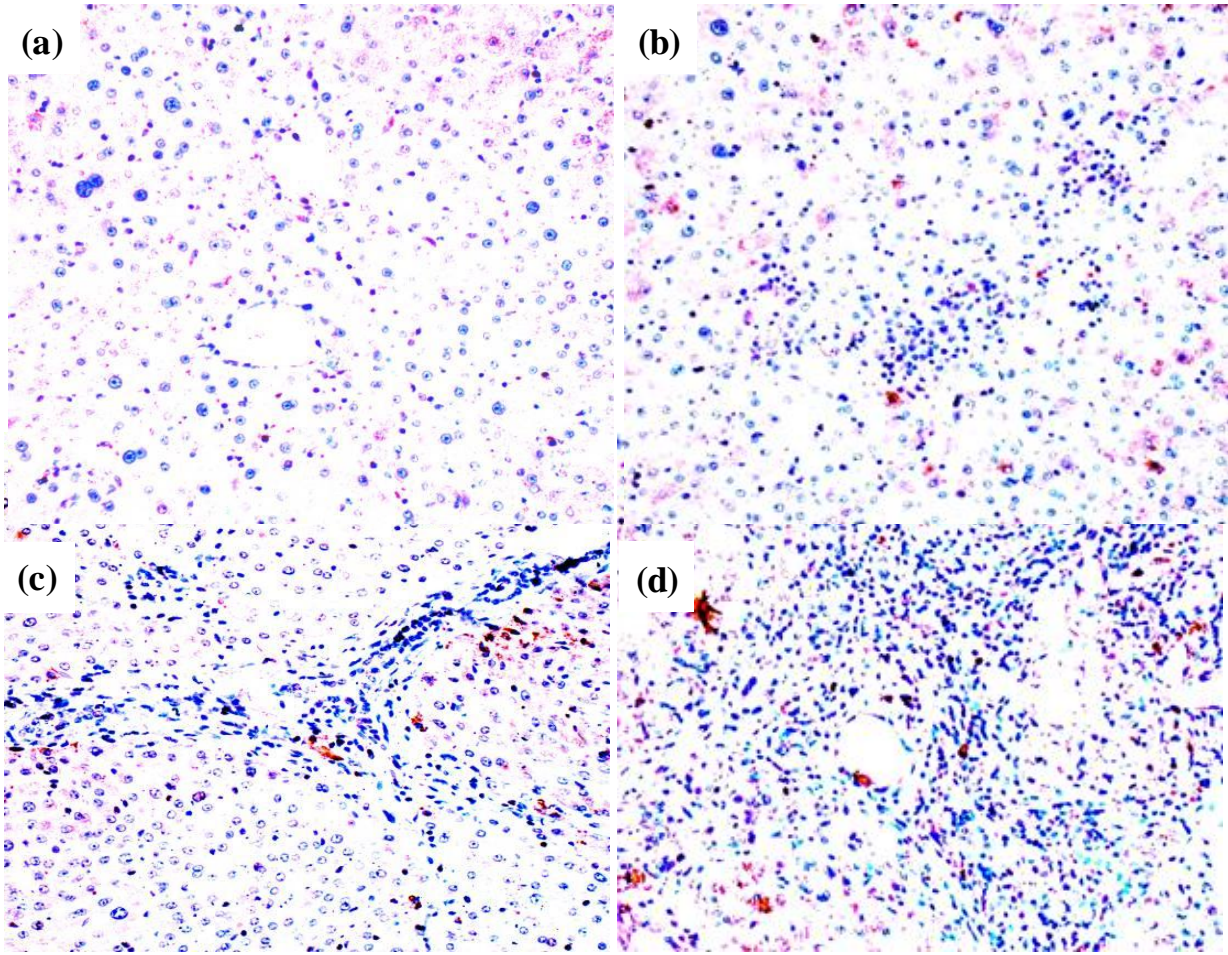
Suppl. Figure 2. Intrahepatic IFN- γ expression. Representative micrographs of serial liver tissue sections from the four groups of CHB patient samples: F0 (a), F1–2 (b), F3–4 (c), and F5–6 (d). Magnifications: 200 \times

Suppl. Figure 3. Intrahepatic IL-4 expression. Representative micrographs of serial liver tissue sections from the four groups of CHB patient samples: F0 (a), F1–2 (b), F3–4 (c), and F5–6 (d). Magnifications: 400 \times

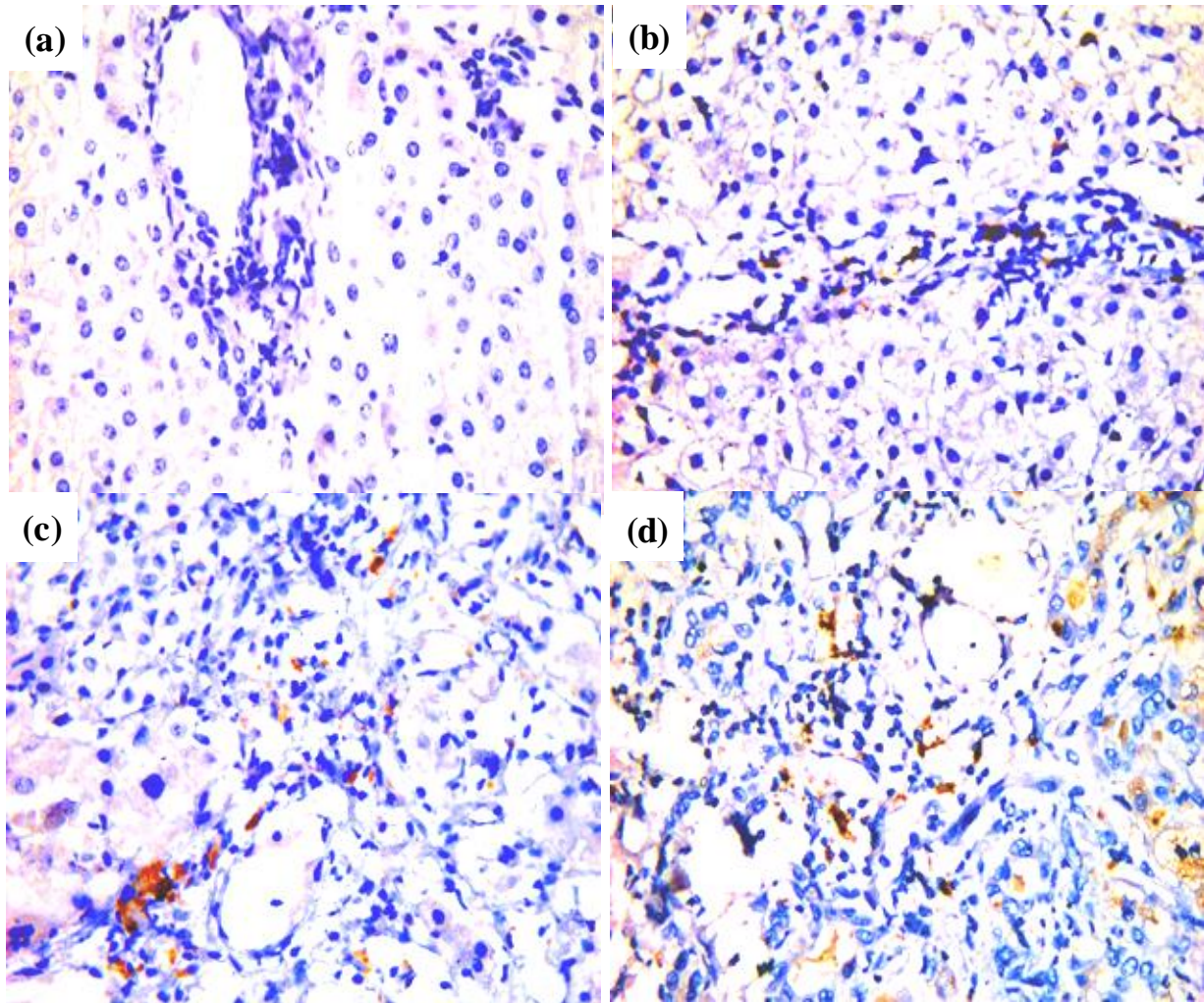
Suppl. Figures



Suppl. Figure 1 Intrahepatic IP-10 expression



Suppl. Figure 2 Intrahepatic IFN- γ expression



Suppl. Figure 3 Intrahepatic IL-4 expression