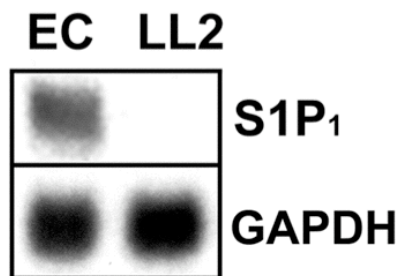
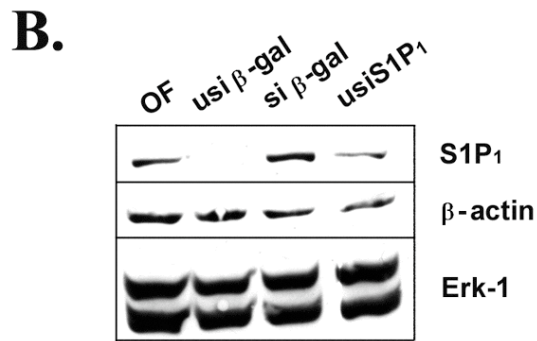
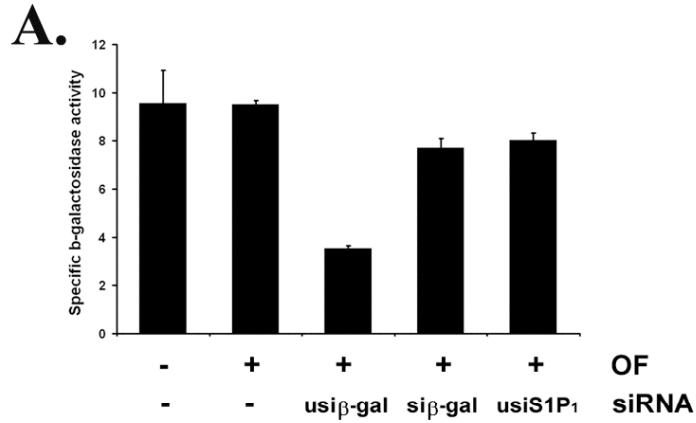


## Supplementary Figures.

**Supplementary Figure 1.** The expression of S1P<sub>1</sub> was determined by Northern blot analysis. Total RNA was isolated from MEEC and Lewis lung carcinoma cells (LL2), total RNA was purified and S1P<sub>1</sub> and GAPDH transcripts were detected in a Northern blot analysis with specific probes as described.

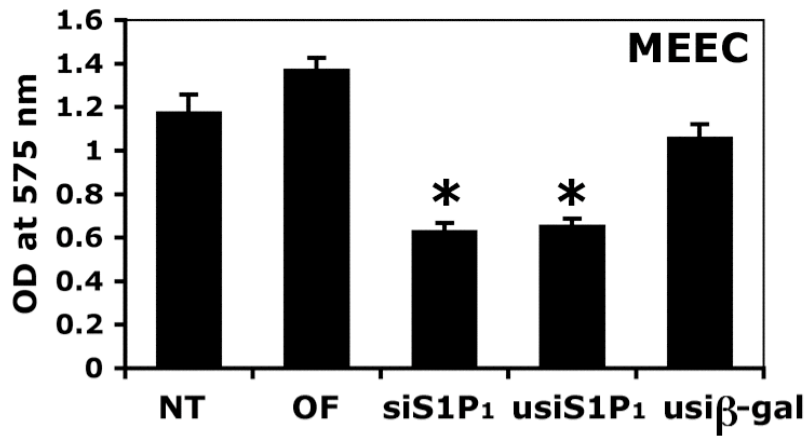


**Supplementary Figure 2.** MEEC expressing  $\beta$ -galactosidase were transfected with siRNA-Oligofactamine complexes or liposome alone (OF). Expression of  $\beta$ -galactosidase was determined by enzyme activity assays (A) and Western blot analysis (B) as described.



**Supplementary Figure 3.** The effects of siRNAs on proliferation of MEECs (A) and LL2 cells (B) were determined by a cell proliferation assay using the MTT reagent. Cells were transfected with siRNAs for S1P<sub>1</sub> or  $\beta$ -galactosidase for 72 hr in the presence of 10% fetal bovine serum and compared with non-transfected (NT) or Oligofectamine (OF)-treated cells. MTT reduction product was measured at 575 nm. siRNAs for S1P<sub>1</sub> showed inhibitory effects on MEEC proliferation while having no effects on LL2 cells. Non-related siRNA ( $\beta$ -gal) and transfection reagents have no effects on both cells. N=6, P< 0.05 (\*).

**A.**



**B.**

