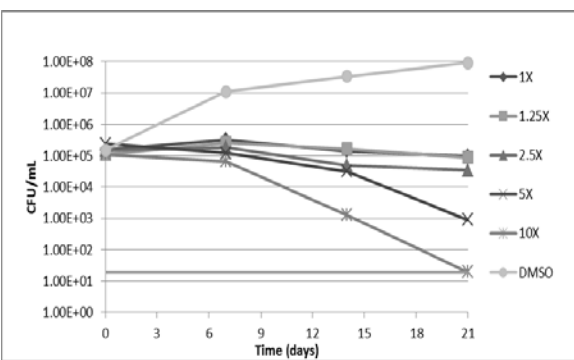
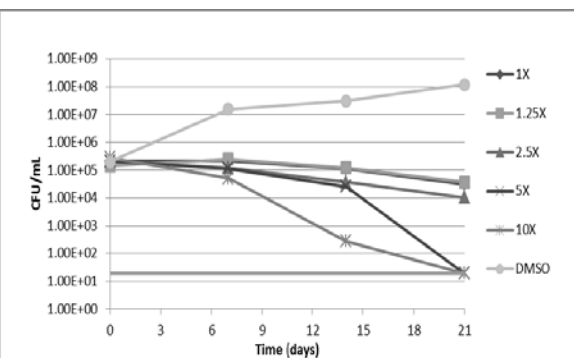
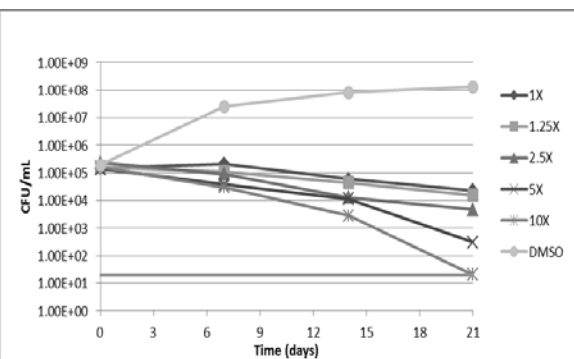
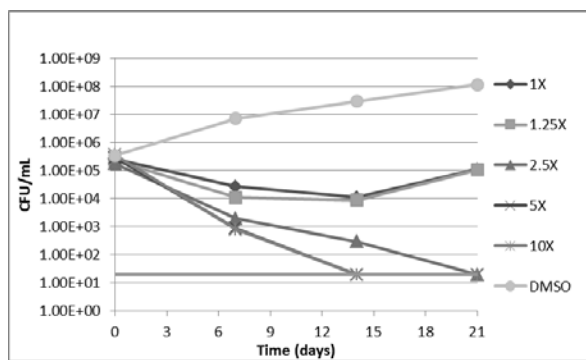
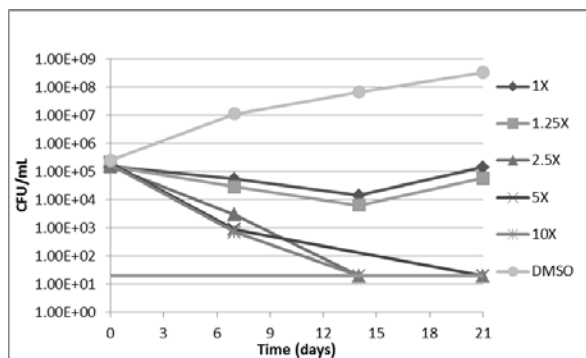
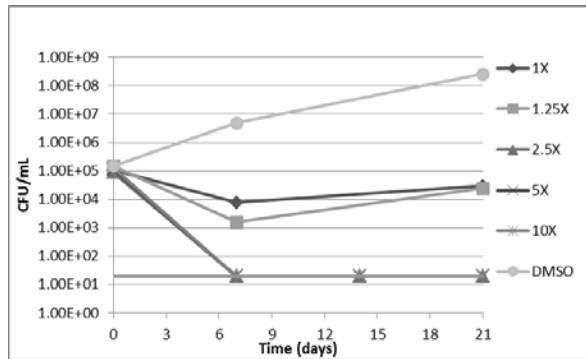


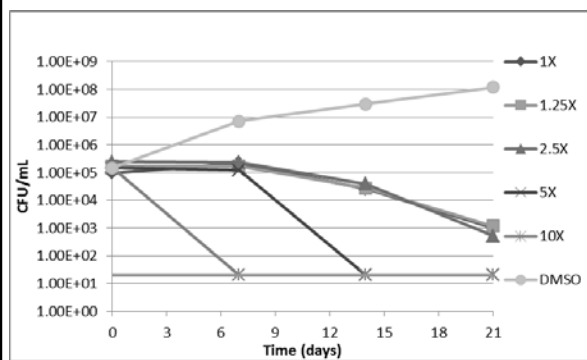
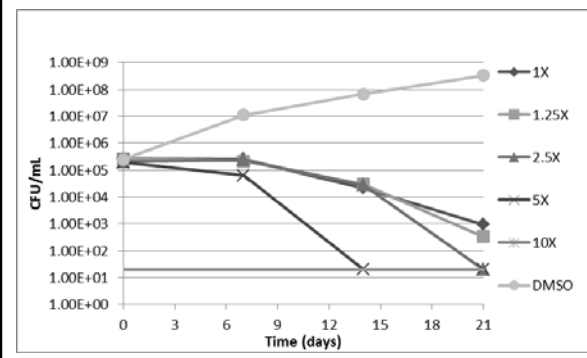
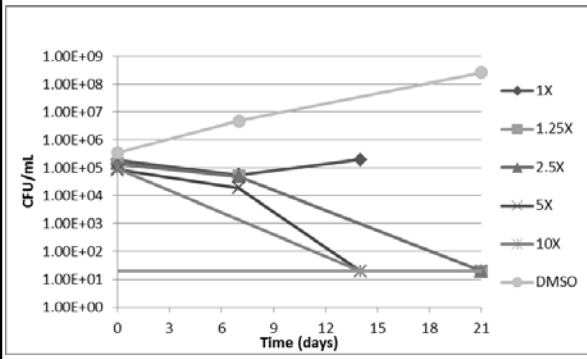
A



B



C



**Figure S1. Kill kinetics.** CFUs were determined in liquid culture after 0-21 days exposure to compounds at 1X, 1.25X, 2.5X, 5X and 10X MIC. The top graph in each panel is wild type; middle graphs are Rv0560cΔ; and bottom graphs are Rv0560c C'. The lower limit of detection is 20 CFU/mL. A. CCCP B. Ethambutol C. Plumbagin. MICs were 15 μM CCCP, 7 μM plumbagin, 1 μM ethambutol