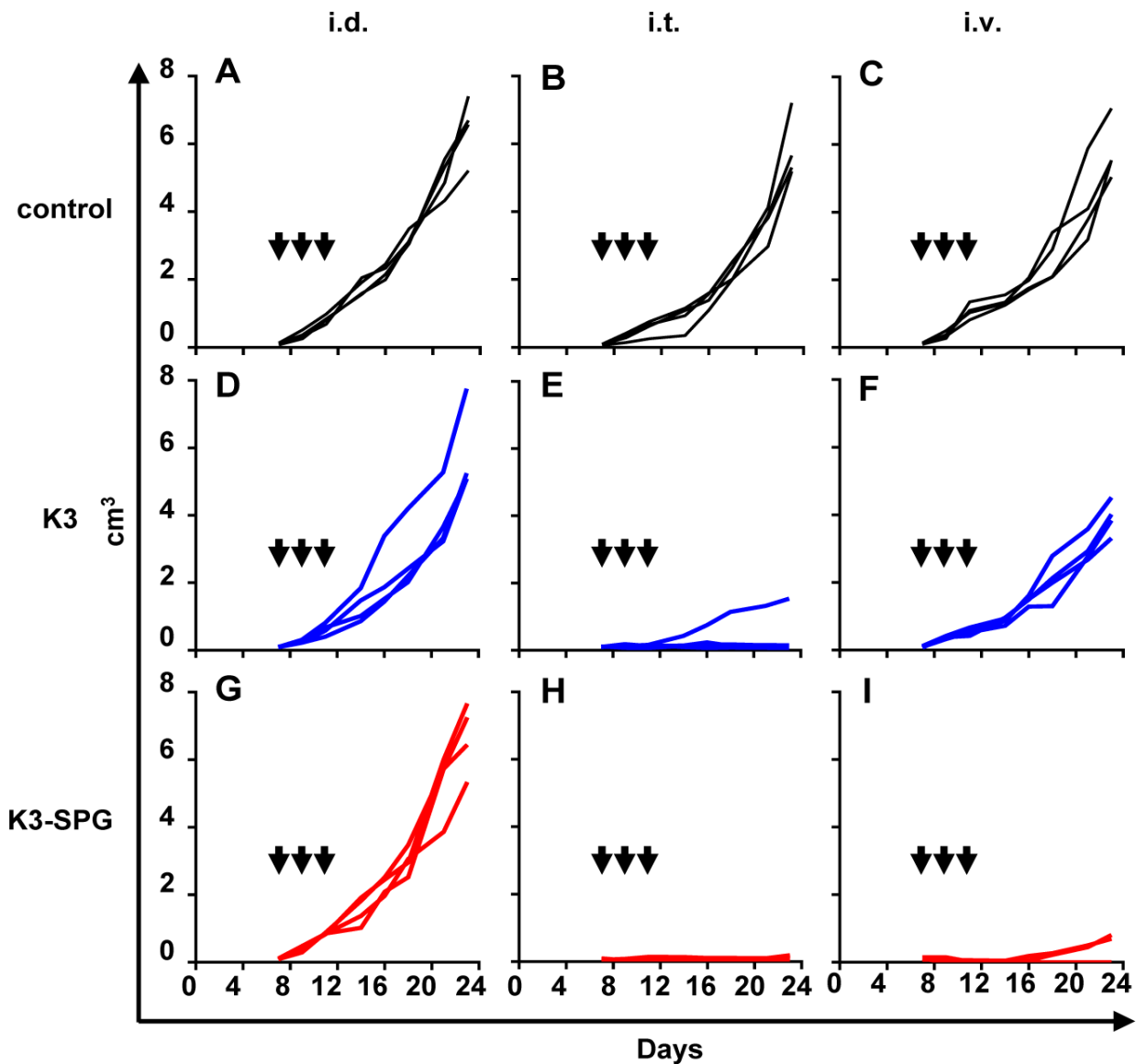


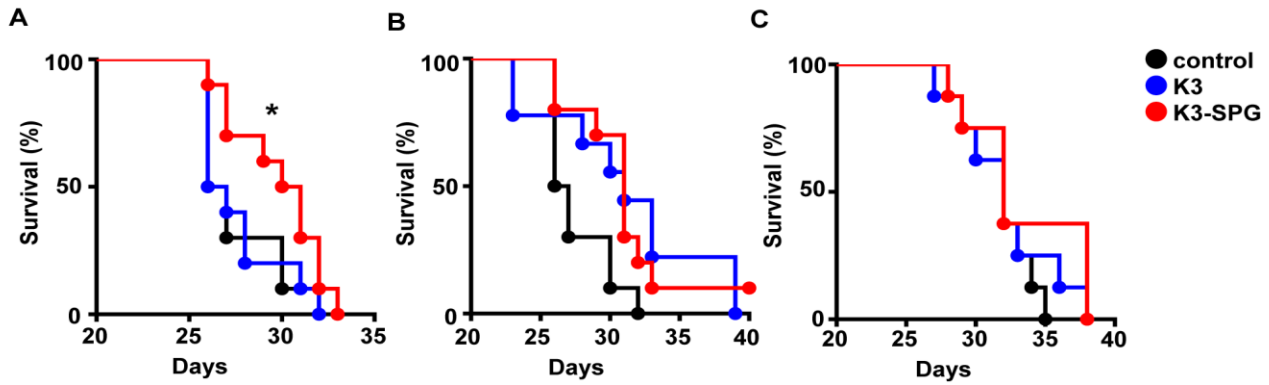
Circulating nano-particulate TLR9 agonist scouts out tumor microenvironment to release immunogenic dead tumor cells

Supplementary Material

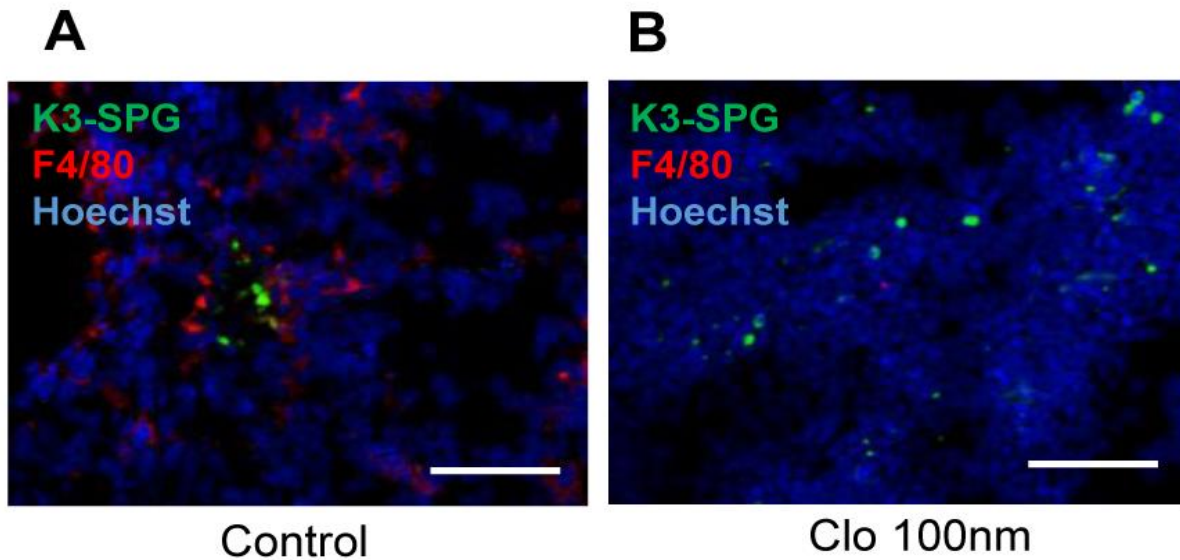


Supplementary Figure 1. K3-SPG i.v. without antigen can be applied for EG7 tumor model

C57BL/6 mice were inoculated s.c. with EG7 cells at day 0 and were administrated intradermally (i.d.) (peritumoral area) (A, D, G), intratumorally (i.t.) (B, E, H), or intravenously (i.v.) (C, F, I) with PBS (A-C), K3 (30 μ g) (D-F), or K3-SPG (10 μ g) (G-I) at day 7, 9, and 11. The size of tumor were was measured for 23 days (n=4). Each curve represents individual mouse. Arrows indicate timing of therapy

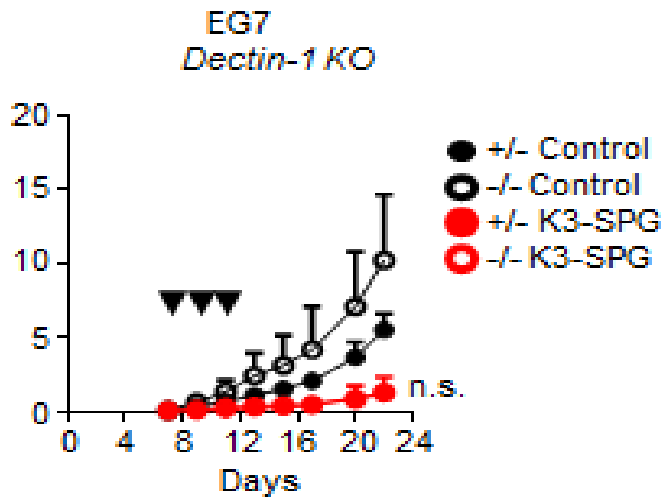


Supplementary Figure 2. The dose escalation test of systemic administration of K3 and K3-SPG without tumor antigen in pancreatic cancer peritoneum dissemination model C57BL/6 mice were i.p. injected with Pan02 at day 0 and were treated i.v. with PBS, K3 or K3-SPG three times. Survival rate (%) was representative (n=10). * $p < 0.05$ (Gehan-Breslow-Wilcoxon test). (A) K3 (10 µg) K3-SPG (10 µg) (B, C) K3 (50 µg) K3-SPG (50 µg)



Supplementary Figure 3. F4/80 positive cells in the tumor were depleted by clodronate liposome

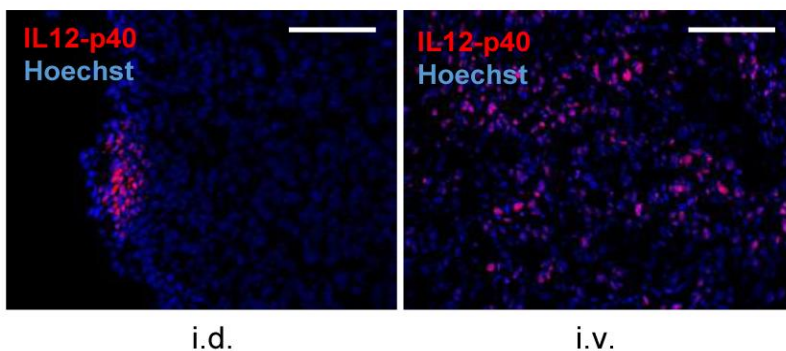
C57BL/6 mice were inoculated with EG7 at day 0 and administrated i.v. with liposome (A) or liposome (B) day 5, and treated i.v. with Alexa 647-K3-SPG at day 7. One hour after treatment, the frozen section of tumor was stained by anti-F4/80 antibody (red) and Hoechst33258 (blue) and then analyzed by fluorescent microscopy. (scale bars, 100µm)



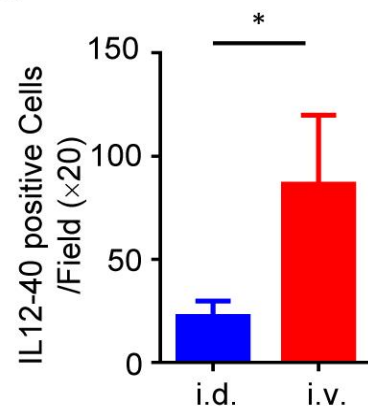
Supplementary Figure 4. Tumor regression effect of K3-SPG is not dependent on *Dectin-1* signal.

Dectin-1 KO and hetero mice were inoculated with EG7 at day0 and were treated with intravenous injection with K3-SPG at day7, 9, and11. n=5 (*Dectin-1*). Tumor growth is shown as mean + SEM. n.s.; not significant. $p < 0.05$ (*t*-test).

A



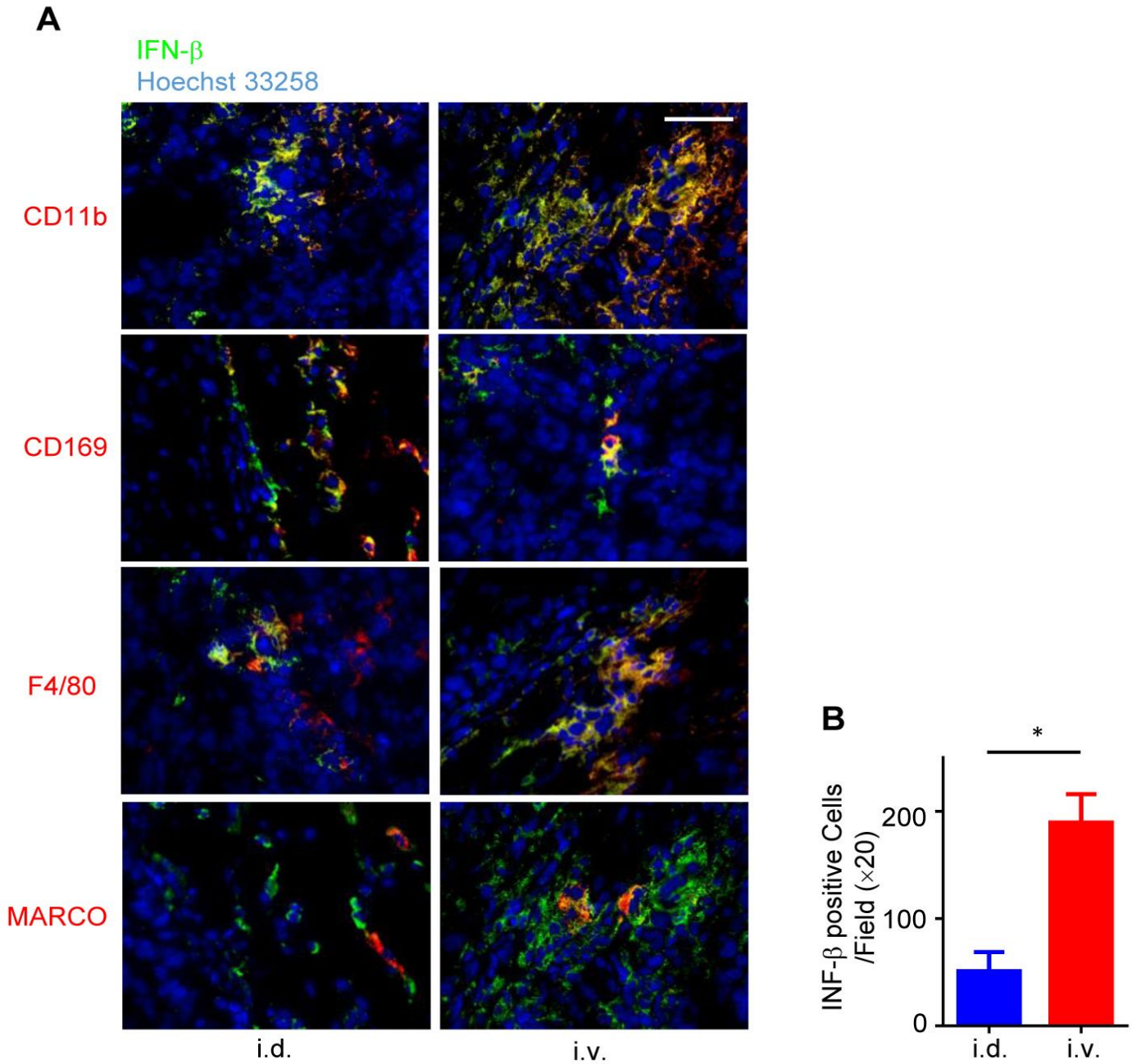
B



Supplementary Figure 5. IL12-p40 was detected in tumor-microenvironment

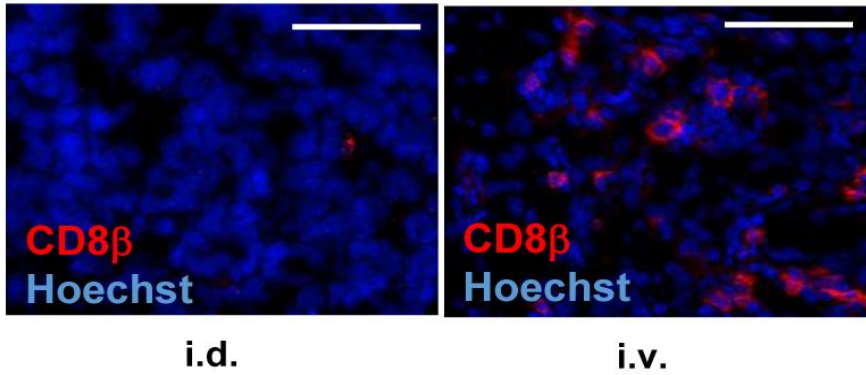
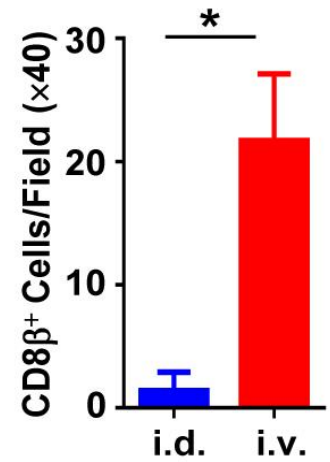
(A) C57BL/6 mice were inoculated with MC38 at day 0 and were treated i.d. or i.v. with K3-SPG at day 14, 16, and 18. Twelve days after inoculation, tumor was collected and the frozen section was stained by anti-IL12-p40 antibody (red)

and Hoechst 33258 (blue) and then analyzed by fluorescent microscopy. (scale bars, 100 μ m) (B) IL12-p40 positive cells were counted (10 fields each from 3 tumors). Error bars represent mean + SD. * $p < 0.05$ (t -test).

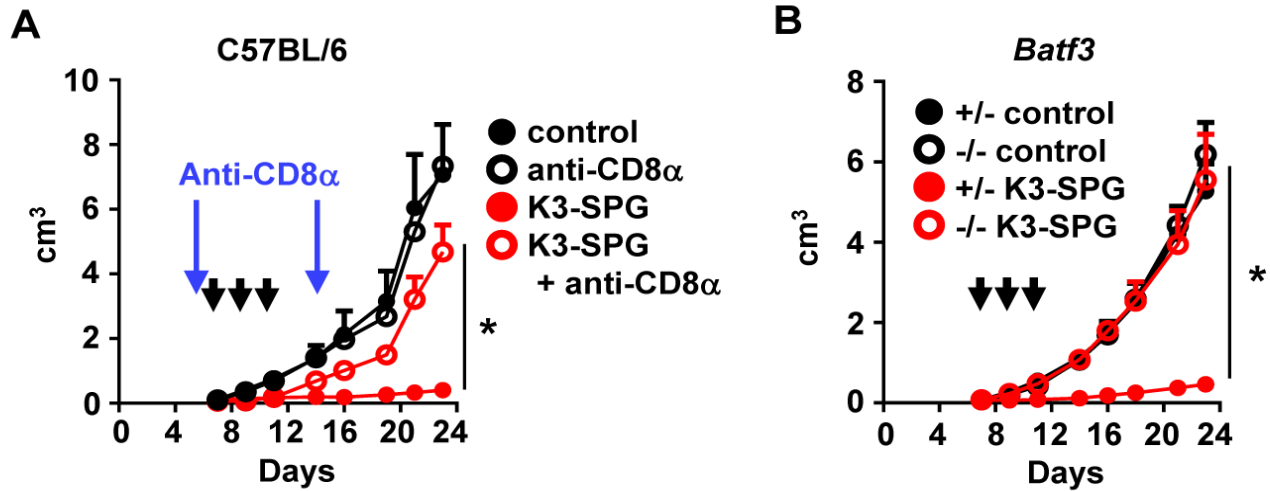


Supplementary Figure 6. IFN- β was detected in tumor-microenvironment

(A) IFN- β GFP mice were inoculated with MC38 at day 0 and were treated i.d. or i.v. with K3-SPG at day 14, 16, and 18. Twelve days after inoculation, tumor was collected and the frozen section was stained by anti-CD11b, CD169, F4/80, MARCO antibody (red) and Hoechst 33258 (blue) and then analyzed by fluorescent microscopy. (scale bars, 100 μ m) (B) IFN- β positive cells were counted (10 fields each from 3 tumors). Error bars represent mean + SD. * $p < 0.05$ (t -test).

A**B****Supplementary Figure 7. CD8⁺ T-cells was detected in tumor microenvironment**

(A) C57BL/6 mice were inoculated with EG7 s.c. at right flank at day 0 and were treated with i.d. or i.v. with K3-SPG at day 7, 9, and 11. (B) At twelve days after inoculation, tumor was collected and the frozen section was stained by anti-CD8 β antibody (red) and Hoechst 33258 (blue) and then analyzed by fluorescent microscopy. (scale bars, 100 μ m) CD8 β positive cells were counted (10 fields each from 3 tumors). Error bars represent mean + SD. * $p < 0.05$ (t -test).



Supplementary Figure 8. K3-SPG-induced tumor regression requires immune responses

(A) C57BL/6 mice administered CD8 α -depleting antibody (200 μ g/mouse) or not at day 6 and 13, and were inoculated with EG7 s.c. at right flank at day 0 and were treated with i.v. with K3-SPG at day 7, 9, and 11 (black arrow). (B) *Batf3* hetero and deficient mice were inoculated with EG7 s.c. at right flank at day 0 and were treated with i.v. with K3-SPG at day 7, 9, and 11 (black arrow). Error bars represent mean + SEM (n=4). * $p < 0.05$ (*t*-test). Arrows indicate timing of therapy.