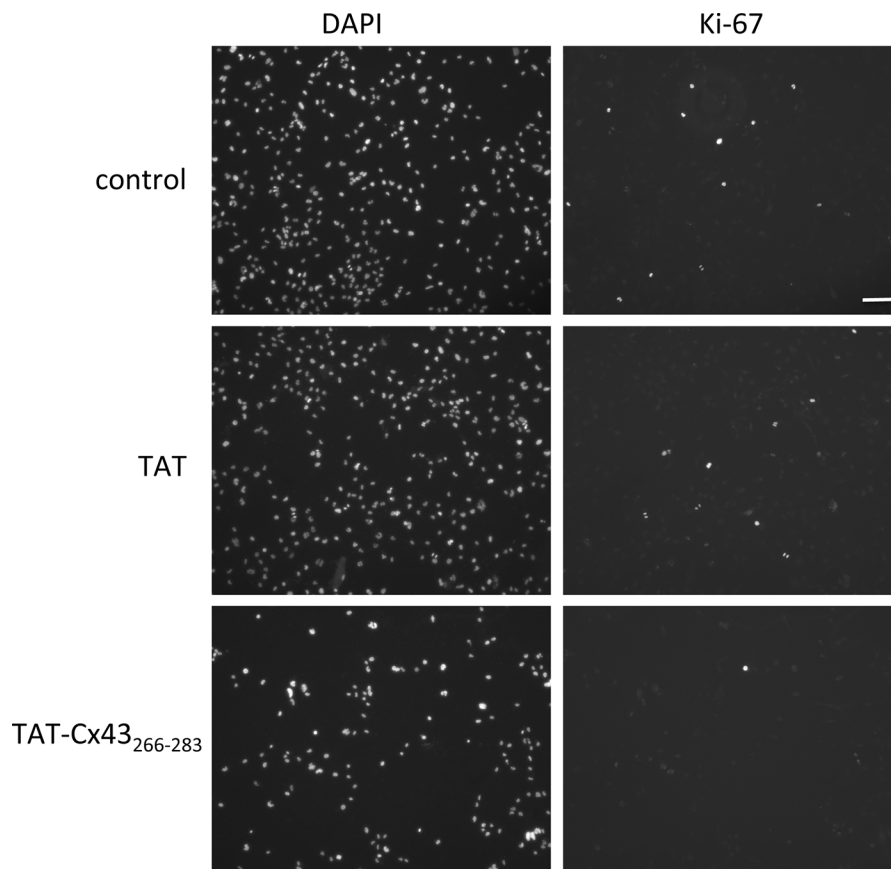


Connexin43 recruits PTEN and Csk to inhibit c-Src activity in glioma cells and astrocytes

Supplementary Materials



Supplementary Figure S1: Effect of TAT-Cx43-266-283 on the expression of Ki-67 in G166 human glioblastoma stem cells (GSCs). G166 cells were incubated with TAT or TAT-Cx43-266-283 for 48 h. The DAPI and Ki-67 photomicrographs are of the same field and show the reduction of Ki-67-positive cells promoted by TAT-Cx43-266-283. Scale bar = 50 μ m.