

## **SUPPLEMENTARY DATA**

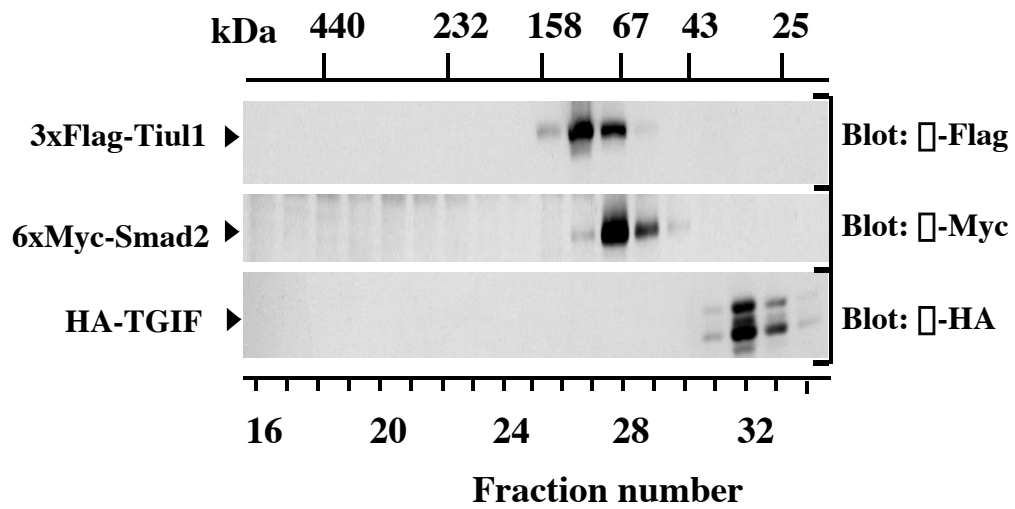
### **The novel E3 ubiquitin ligase Tiul1 associates with TGIF to target Smad2 for degradation**

**Su Ryeon Seo<sup>1</sup>, François Lallemand<sup>1</sup>, Nathalie Ferrand<sup>1</sup>, Marcia Pessah<sup>1</sup>, Sébastien L'Hoste<sup>2</sup>, Jacques Camonis<sup>2</sup>, and Azeddine Atfi<sup>1,3</sup>**

<sup>1</sup>INSERM U 482, Hôpital St-Antoine, 184 Rue du Faubourg St-Antoine, 75571, Paris, France

<sup>2</sup>INSERM U528, Institut Curie, 26 Rue d'Ulm, 75248, Paris, France

## Supplementary Figure



293 cells were transfected with 3x-Flag-Tiul1, HA-TGIF, or 6xMyc-Smad2. Cell lysates were loaded onto a Superdex 200 gel filtration column and fractions were analyzed for the presence of Tiul1, TGIF, and Smad2 by Western blotting.