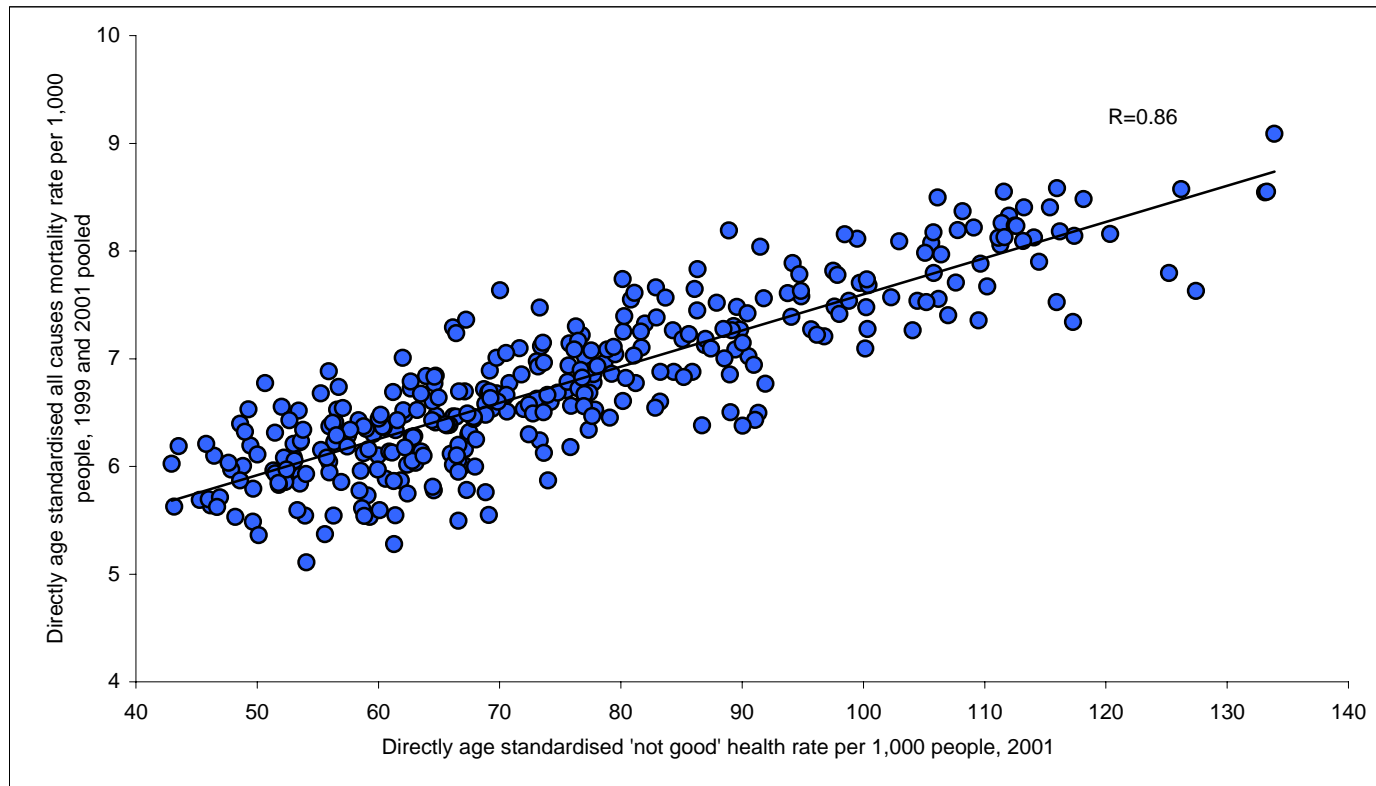


The full results and details of excluded local authorities



Area code	Area name	'Not good' health rate	All causes mortality rate
00AB	Barking and Dagenham	105.8	7.8
00AC	Barnet	67.1	6.0
00AD	Bexley	66.2	6.5
00AE	Brent	91.4	6.5
00AF	Bromley	58.8	6.1
00AG	Camden	98.8	7.5
00AH	Croydon	73.1	6.6
00AJ	Ealing	85.9	6.9
00AK	Enfield	80.2	6.6
00AL	Greenwich	94.9	7.6
00AM	Hackney	127.4	7.6
00AN	Hammersmith and Fulham	91.9	6.8
00AP	Haringey	100.3	7.3
00AQ	Harrow	64.6	5.8
00AR	Havering	69.2	6.6
00AS	Hillingdon	70.2	6.6
00AT	Hounslow	84.3	7.3
00AU	Islington	120.4	8.2
00AX	Kingston upon Thames	58.4	6.4
00AY	Lambeth	97.5	7.8
00AZ	Lewisham	91.5	8.0
00BA	Merton	69.4	6.5
00BB	Newham	126.2	8.6
00BC	Redbridge	79.1	6.5
00BD	Richmond upon Thames	52.7	6.0
00BE	Southwark	99.7	7.7
00BF	Sutton	64.7	6.8
00BG	Tower Hamlets	133.1	8.5
00BH	Waltham Forest	94.2	7.9
00BJ	Wandsworth	80.2	7.7
00BL	Bolton	100.4	7.7
00BM	Bury	89.6	7.5
00BP	Oldham	105.6	8.1
00BQ	Rochdale	106.1	8.5
00BR	Salford	116.0	8.6
00BS	Stockport	77.7	6.8
00BT	Tameside	105.8	8.2
00BU	Trafford	78.7	7.0

00BW	Wigan	108.2	8.4
00BX	Knowsley	133.3	8.6
00BY	Liverpool	133.9	9.1
00BZ	St. Helens	114.1	8.1
00CA	Sefton	93.8	7.6
00CB	Wirral	97.6	7.5
00CC	Barnsley	125.2	7.8
00CE	Doncaster	106.2	7.6
00CF	Rotherham	107.0	7.4
00CG	Sheffield	100.2	7.1
00CH	Gateshead	113.2	8.1
00CJ	Newcastle upon Tyne	111.3	8.1
00CK	North Tyneside	95.7	7.3
00CL	South Tyneside	109.7	7.9
00CM	Sunderland	118.2	8.5
00CN	Birmingham	107.6	7.7
00CQ	Coventry	94.1	7.4
00CR	Dudley	85.1	7.2
00CS	Sandwell	107.8	8.2
00CT	Solihull	67.1	6.2
00CU	Walsall	98.0	7.4
00CW	Wolverhampton	104.5	7.5
00CX	Bradford	97.9	7.8
00CY	Calderdale	86.9	7.1
00CZ	Kirklees	89.3	7.3
00DA	Leeds	90.5	7.0
00DB	Wakefield	110.2	7.7
00EB	Hartlepool	112.0	8.3
00EC	Middlesbrough	111.4	8.3
00EE	Redcar and Cleveland	105.2	7.5
00EF	Stockton-on-Tees	94.7	7.8
00EH	Darlington	86.3	7.8
00ET	Halton	111.6	8.6
00EU	Warrington	82.0	7.3
00EX	Blackburn with Darwen	112.5	8.2
00EY	Blackpool	115.4	8.4
00FA	Kingston upon Hull; City of	106.4	8.0
00FB	East Riding of Yorkshire	68.8	6.6
00FC	North East Lincolnshire	81.6	7.3
00FD	North Lincolnshire	81.7	7.1
00FF	York	67.4	6.3

00FK	Derby	89.8	7.3
00FN	Leicester	105.1	8.0
00FP	Rutland	49.7	5.5
00FY	Nottingham	113.3	8.4
00GA	Herefordshire; County of	66.0	6.1
00GF	Telford and Wrekin	90.4	7.4
00GL	Stoke-on-Trent	117.4	8.1
00HA	Bath and North East Somerset	60.6	5.9
00HB	Bristol; City of	87.0	7.2
00HC	North Somerset	66.6	6.2
00HD	South Gloucestershire	61.9	5.9
00HG	Plymouth	91.0	6.9
00HH	Torbay	86.7	6.4
00HN	Bournemouth	77.4	6.7
00HP	Poole	68.8	5.8
00HX	Swindon	71.7	7.1
00JA	Peterborough	80.2	7.3
00KA	Luton	82.9	7.7
00KF	Southend-on-Sea	77.3	6.9
00KG	Thurrock	75.8	7.1
00LC	Medway	73.3	7.5
00MA	Bracknell Forest	55.9	6.9
00MB	West Berkshire	49.5	6.2
00MC	Reading	64.8	6.5
00MD	Slough	83.7	7.6
00ME	Windsor and Maidenhead	49.3	6.5
00MF	Wokingham	43.5	6.2
00MG	Milton Keynes	73.4	7.1
00ML	Brighton and Hove	81.1	7.0
00MR	Portsmouth	80.3	7.4
00MS	Southampton	84.4	6.9
00MW	Isle of Wight	73.3	6.2
09UC	Mid Bedfordshire	53.5	6.2
09UD	Bedford	66.4	6.5
09UE	South Bedfordshire	62.0	7.0
11UB	Aylesbury Vale	53.4	6.5
11UC	Chiltern	42.9	6.0
11UE	South Bucks	46.5	6.1
11UF	Wycombe	53.0	6.1
12UB	Cambridge	63.2	6.1
12UC	East Cambridgeshire	58.6	6.0

12UD	Fenland	76.8	7.2
12UE	Huntingdonshire	56.7	6.3
12UG	South Cambridgeshire	48.2	5.5
13UB	Chester	69.2	6.9
13UC	Congleton	64.5	6.6
13UD	Crewe and Nantwich	76.3	7.3
13UE	Ellesmere Port and Neston	83.2	6.6
13UG	Macclesfield	59.6	6.3
13UH	Vale Royal	77.0	7.0
15UB	Caradon	73.6	6.1
15UC	Carrick	74.0	5.9
15UD	Kerrier	89.0	6.5
15UE	North Cornwall	75.8	6.2
15UF	Penwith	91.1	6.4
15UG	Restormel	82.8	6.5
16UB	Allerdale	80.8	7.5
16UC	Barrow-in-Furness	115.9	7.5
16UD	Carlisle	81.1	7.6
16UE	Copeland	89.2	7.3
16UF	Eden	63.0	6.3
16UG	South Lakeland	63.3	6.1
17UB	Amber Valley	83.3	6.9
17UC	Bolsover	117.3	7.3
17UD	Chesterfield	102.3	7.6
17UF	Derbyshire Dales	62.2	6.5
17UG	Erewash	79.5	7.0
17UH	High Peak	75.5	6.7
17UJ	North East Derbyshire	89.0	6.9
17UK	South Derbyshire	76.5	7.2
18UB	East Devon	59.3	5.5
18UC	Exeter	74.2	6.6
18UD	Mid Devon	61.3	5.9
18UE	North Devon	68.7	6.7
18UG	South Hams	61.4	5.5
18UH	Teignbridge	66.6	6.1
18UK	Torridge	74.8	6.7
18UL	West Devon	62.4	6.0
19UC	Christchurch	66.6	5.5
19UD	East Dorset	54.1	5.1
19UE	North Dorset	55.6	5.4
19UG	Purbeck	61.3	5.3

19UH	West Dorset	59.1	5.7
19UJ	Weymouth and Portland	77.0	6.6
20UB	Chester-le-Street	100.2	7.5
20UD	Derwentside	114.5	7.9
20UE	Durham	96.8	7.2
20UG	Sedgefield	116.2	8.2
20UH	Teesdale	75.6	6.8
20UJ	Wear Valley	109.1	8.2
21UC	Eastbourne	77.9	6.5
21UD	Hastings	96.2	7.2
21UF	Lewes	64.5	5.8
21UG	Rother	66.2	6.0
21UH	Wealden	54.0	5.5
22UB	Basildon	76.5	6.7
22UC	Braintree	61.2	6.7
22UD	Brentwood	53.0	6.2
22UE	Castle Point	65.9	6.4
22UF	Chelmsford	53.6	5.9
22UG	Colchester	64.7	6.4
22UH	Epping Forest	61.4	6.3
22UJ	Harlow	77.4	6.3
22UK	Maldon	60.5	6.4
22UL	Rochford	58.4	5.8
22UN	Tendring	81.2	6.8
22UQ	Uttlesford	48.6	6.4
23UB	Cheltenham	62.8	6.3
23UC	Cotswold	48.8	6.0
23UD	Forest of Dean	69.8	6.7
23UE	Gloucester	77.8	6.9
23UF	Stroud	57.5	6.3
23UG	Tewkesbury	56.0	6.0
24UB	Basingstoke and Deane	56.0	6.4
24UC	East Hampshire	49.0	6.3
24UD	Eastleigh	56.4	6.2
24UE	Fareham	53.5	5.8
24UF	Gosport	69.7	7.0
24UG	Hart	43.2	5.6
24UH	Havant	70.6	6.5
24UJ	New Forest	56.3	5.5
24UL	Rushmoor	62.7	6.7
24UN	Test Valley	52.3	5.9

24UP	Winchester	46.2	5.6
26UB	Broxbourne	62.9	6.3
26UC	Dacorum	56.4	6.4
26UD	East Hertfordshire	51.5	6.3
26UE	Hertsmere	56.6	6.5
26UF	North Hertfordshire	56.8	6.7
26UG	St. Albans	51.6	5.9
26UH	Stevenage	70.8	6.8
26UJ	Three Rivers	54.0	5.9
26UK	Watford	66.2	7.3
26UL	Welwyn Hatfield	63.6	6.1
29UB	Ashford	63.1	6.0
29UC	Canterbury	72.4	6.3
29UD	Dartford	67.2	7.4
29UE	Dover	78.1	6.9
29UG	Gravesham	70.6	6.7
29UH	Maidstone	59.0	6.3
29UK	Sevenoaks	53.3	5.6
29UL	Shepway	75.7	6.9
29UM	Swale	73.6	7.1
29UN	Thanet	89.4	7.1
29UP	Tonbridge and Malling	56.2	6.4
29UQ	Tunbridge Wells	55.3	6.2
30UD	Burnley	111.1	8.1
30UE	Chorley	83.0	7.4
30UF	Fylde	77.0	6.7
30UG	Hyndburn	111.6	8.1
30UH	Lancaster	85.6	7.2
30UJ	Pendle	104.1	7.3
30UK	Preston	99.5	8.1
30UL	Ribble Valley	62.7	6.8
30UM	Rossendale	98.5	8.2
30UN	South Ribble	79.3	6.9
30UP	West Lancashire	86.1	7.6
30UQ	Wyre	85.2	6.8
31UB	Blaby	60.1	5.6
31UC	Charnwood	64.4	6.4
31UD	Harborough	52.2	6.1
31UE	Hinckley and Bosworth	65.7	6.4
31UG	Melton	52.0	6.6
31UH	North West Leicestershire	74.0	6.7

31UJ	Oadby and Wigston	62.8	6.1
32UB	Boston	78.9	7.1
32UC	East Lindsey	88.5	7.0
32UD	Lincoln	86.3	7.4
32UE	North Kesteven	63.5	6.7
32UF	South Holland	72.0	6.5
32UG	South Kesteven	60.3	6.4
32UH	West Lindsey	69.1	6.7
33UB	Breckland	67.5	6.3
33UC	Broadland	60.0	6.1
33UD	Great Yarmouth	87.4	7.1
33UE	King's Lynn and West Norfolk	75.9	6.6
33UF	North Norfolk	67.3	5.8
33UG	Norwich	90.1	6.4
33UH	South Norfolk	58.7	5.6
34UB	Corby	88.9	8.2
34UC	Daventry	55.3	6.7
34UD	East Northamptonshire	62.1	6.5
34UE	Kettering	67.1	6.7
34UF	Northampton	73.1	7.0
34UG	South Northamptonshire	51.4	6.0
34UH	Wellingborough	73.2	6.9
35UB	Alnwick	68.9	6.5
35UC	Berwick-upon-Tweed	72.4	6.6
35UD	Blyth Valley	103.0	8.1
35UE	Castle Morpeth	69.9	6.6
35UF	Tynedale	64.6	6.8
35UG	Wansbeck	112.6	8.2
36UB	Craven	60.9	6.1
36UC	Hambleton	60.0	6.0
36UD	Harrogate	57.5	6.2
36UE	Richmondshire	60.0	6.4
36UF	Ryedale	58.9	5.5
36UG	Scarborough	80.4	6.8
36UH	Selby	69.2	6.7
37UB	Ashfield	100.3	7.7
37UC	Bassetlaw	91.8	7.6
37UD	Broxtowe	76.7	6.9
37UE	Gedling	72.8	6.5
37UF	Mansfield	109.5	7.4
37UG	Newark and Sherwood	77.6	7.1

37UJ	Rushcliffe	58.8	6.4
38UB	Cherwell	57.1	6.5
38UC	Oxford	67.9	6.4
38UD	South Oxfordshire	47.9	6.0
38UE	Vale of White Horse	49.7	5.8
38UF	West Oxfordshire	51.5	5.9
39UB	Bridgnorth	64.0	6.8
39UC	North Shropshire	67.9	6.5
39UD	Oswestry	70.5	7.1
39UE	Shrewsbury and Atcham	68.1	6.3
39UF	South Shropshire	66.6	5.9
40UB	Mendip	63.7	6.1
40UC	Sedgemoor	73.6	6.5
40UD	South Somerset	62.4	5.7
40UE	Taunton Deane	66.5	6.1
40UF	West Somerset	69.1	5.5
41UB	Cannock Chase	94.9	7.6
41UC	East Staffordshire	70.0	7.6
41UD	Lichfield	66.4	7.2
41UE	Newcastle-under-Lyme	90.1	7.1
41UF	South Staffordshire	64.6	6.8
41UG	Stafford	66.7	6.7
41UH	Staffordshire Moorlands	76.2	7.1
41UK	Tamworth	88.5	7.3
42UB	Babergh	56.0	5.9
42UC	Forest Heath	63.2	6.5
42UD	Ipswich	77.0	6.6
42UE	Mid Suffolk	53.1	6.1
42UF	St. Edmundsbury	57.7	6.3
42UG	Suffolk Coastal	56.9	5.9
42UH	Waveney	77.7	6.5
43UB	Elmbridge	45.3	5.7
43UC	Epsom and Ewell	48.6	5.9
43UD	Guildford	50.1	5.4
43UE	Mole Valley	46.0	5.7
43UF	Reigate and Banstead	50.7	6.8
43UG	Runnymede	52.7	6.4
43UH	Spelthorne	56.5	6.3
43UJ	Surrey Heath	45.8	6.2
43UK	Tandridge	50.0	6.1
43UL	Waverley	46.9	5.7

43UM	Woking	52.4	6.0
44UB	North Warwickshire	79.4	7.1
44UC	Nuneaton and Bedworth	87.9	7.5
44UD	Rugby	65.0	6.6
44UE	Stratford-on-Avon	53.6	6.2
44UF	Warwick	61.6	6.4
45UB	Adur	68.0	6.0
45UC	Arun	65.5	6.4
45UD	Chichester	51.8	5.8
45UE	Crawley	67.4	6.5
45UF	Horsham	46.7	5.6
45UG	Mid Sussex	47.7	6.0
45UH	Worthing	69.2	6.6
46UB	Kennet	51.8	5.8
46UC	North Wiltshire	53.8	6.3
46UD	Salisbury	55.8	6.1
46UF	West Wiltshire	61.1	6.1
47UB	Bromsgrove	60.2	6.5
47UC	Malvern Hills	62.2	6.2
47UD	Redditch	76.8	6.8
47UE	Worcester	71.8	6.9
47UF	Wychavon	59.2	6.2
47UG	Wyre Forest	73.6	7.0

Excluded local authority areas

We excluded City of London and Isles of Scilly (which had very small numbers of deaths), Easington (as the two age standardised self reported health rates for this area were about four times the standard deviation for England and are either erroneous or highly atypical), Kensington and Chelsea (which had a census imputation rate of 64%), and Manchester and Westminster (where the reliability of the census returns has been seriously disputed).