

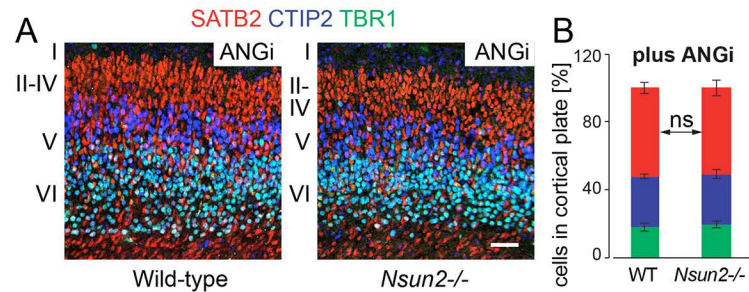
Stem Cell Reports, Volume 8

Supplemental Information

**Cytosine-5 RNA Methylation Regulates Neural Stem Cell Differentiation
and Motility**

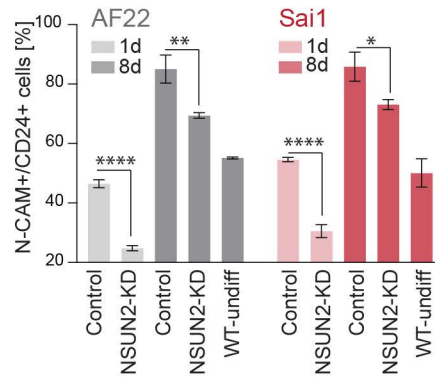
**Joana V. Flores, Lucía Cordero-Espinoza, Feride Oeztuerk-Winder, Amanda
Andersson-Rolf, Tommaso Selmi, Sandra Blanco, Jignesh Tailor, Sabine
Dietmann, and Michaela Frye**

Figure S1, Related to Figure 2



Supplementary Figure 1. (A) Cortical section of wild-type (WT) and *Nsun2*^{-/-}^{D014D11} mouse brains at E18.5 treated with angiogenesis inhibitor (Angi). The layers are labeled for markers for layer VI (TBR1), layer V (CTIP2) and layer IV (SATB2). (B) Quantification of (A) showing no statistically significant difference in populations in the cortical plate in wild-type versus *Nsun2*^{-/-} brains. Data represent mean \pm sd. (n=3 mice per genotype). Significance was assessed using student's t-test. Ns: Not significant. Scale bar: 50 μ m.

Figure S2, Related to Figure 5



Supplementary Figure 2. Percentage of N-CAM and CD24 double-positive AF22 and Sai1 cells after 1 day (1d) and 8 days (8d) induction to differentiate (see Fig. 5E). The cells were transfected with scrambled control siRNA (control) or NSUN2 siRNAs (NSUN2-KD). As control undifferentiated wild-type cells for 8 days in culture were measured (WT-undiff). Data represent mean \pm sd. (n=3 experiments per condition). Significance was assessed using student's t-test. **** p<0.0001; ** p=0.0049; * p=0.0132.