

Supplementary figures

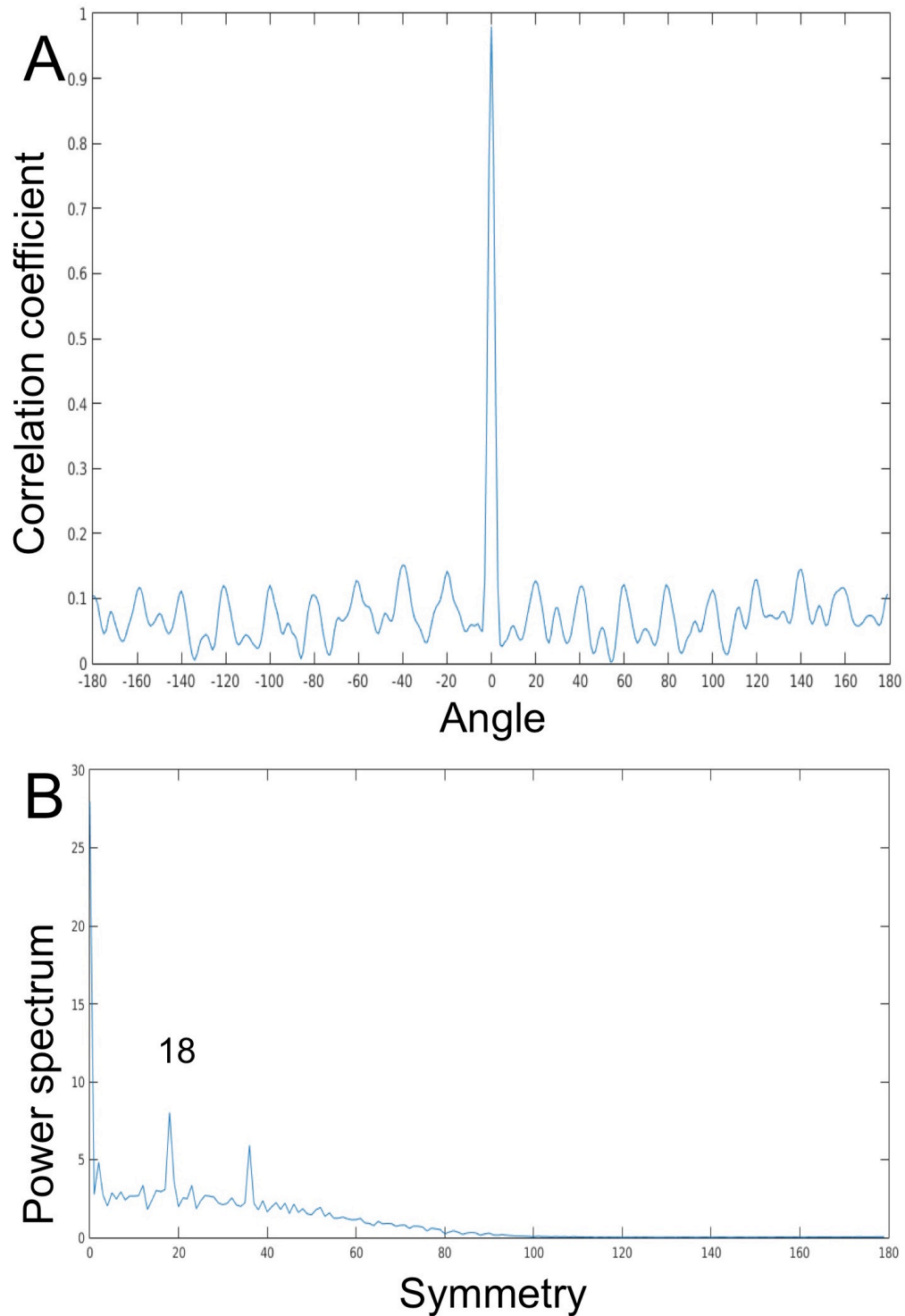


Fig. S1. Symmetry analysis of the cage structure in the *H. pylori* flagellar motor. The rotation correlation shows peaks every 20° (A). The Fourier transform of the cross correlation has a peak at 18 fold symmetry (B).

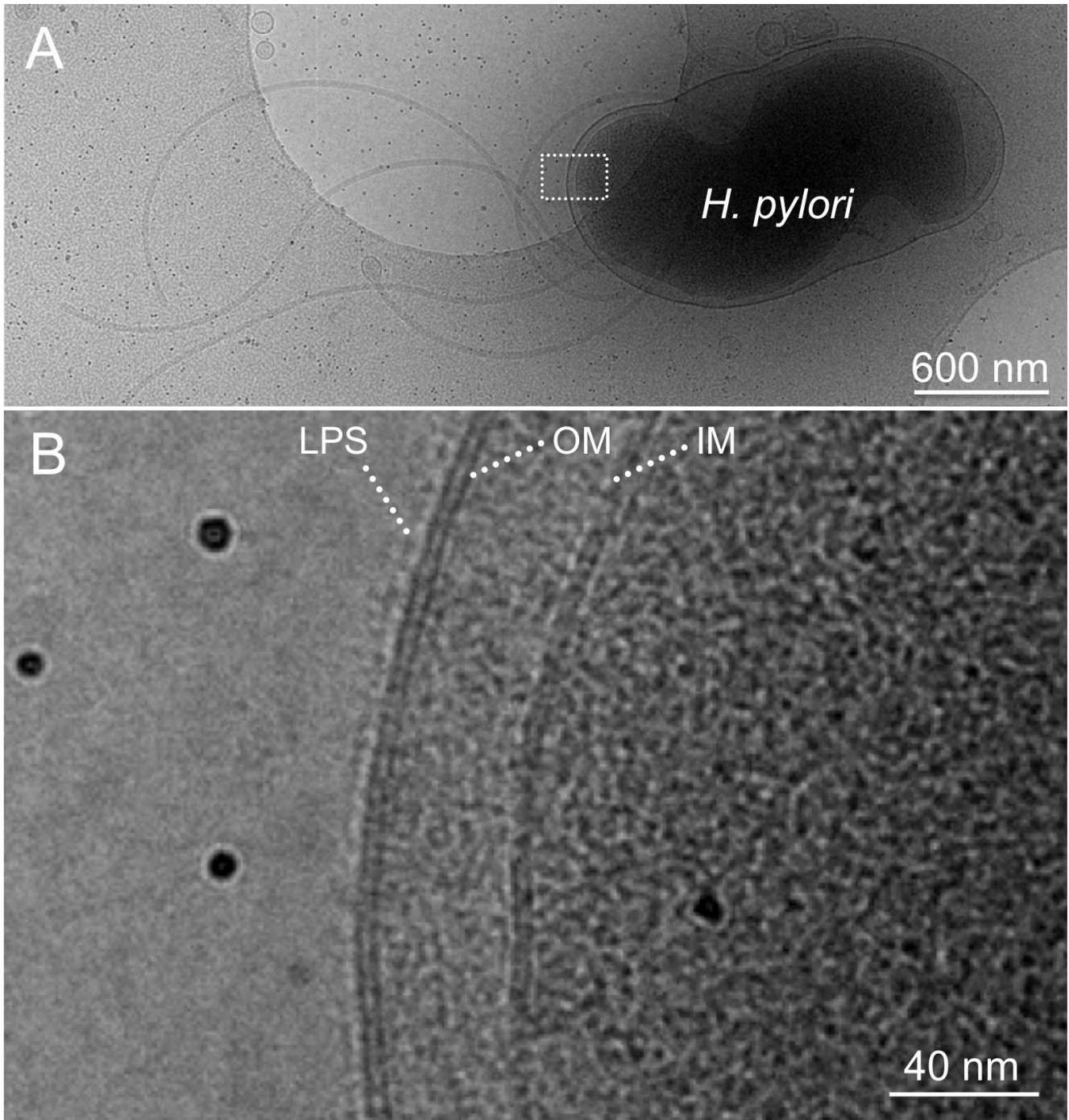


Fig. S2. Cryo-EM images of a *H. pylori* cell and its surface features. An overview of one cell at low magnification (top panel) shows cell shape and flagella attached at one pole. A high magnification image at the cell pole reveals major surface features, such as LPS and two membranes (OM and IM).

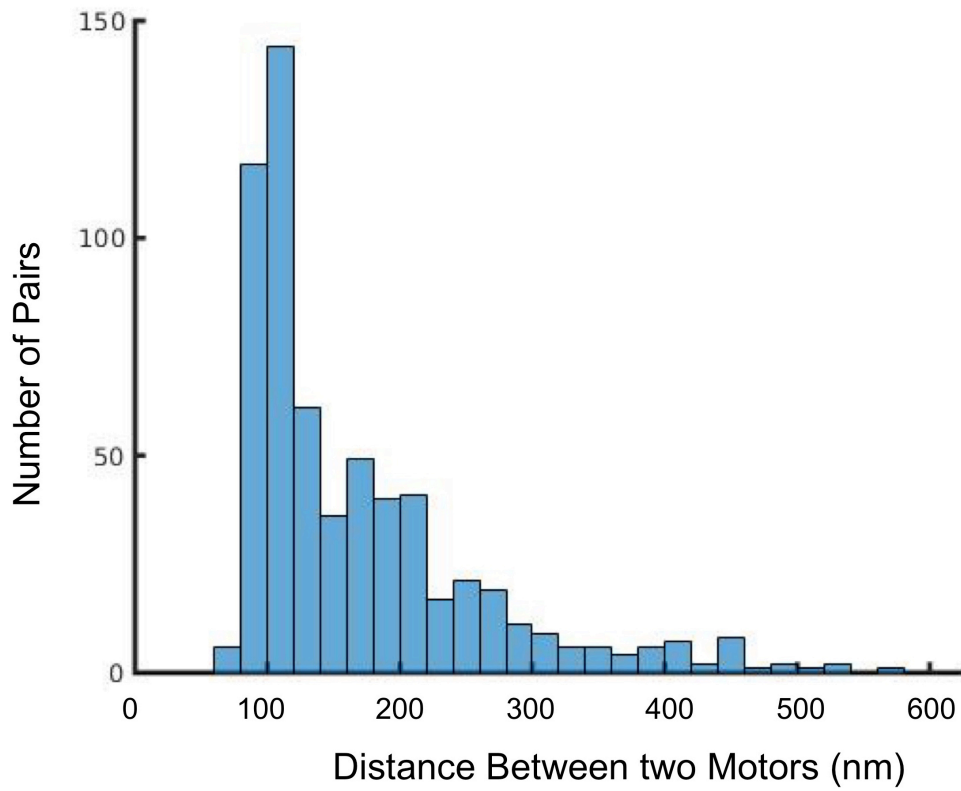


Fig. S3. Distribution of the distance between two flagella in cells.

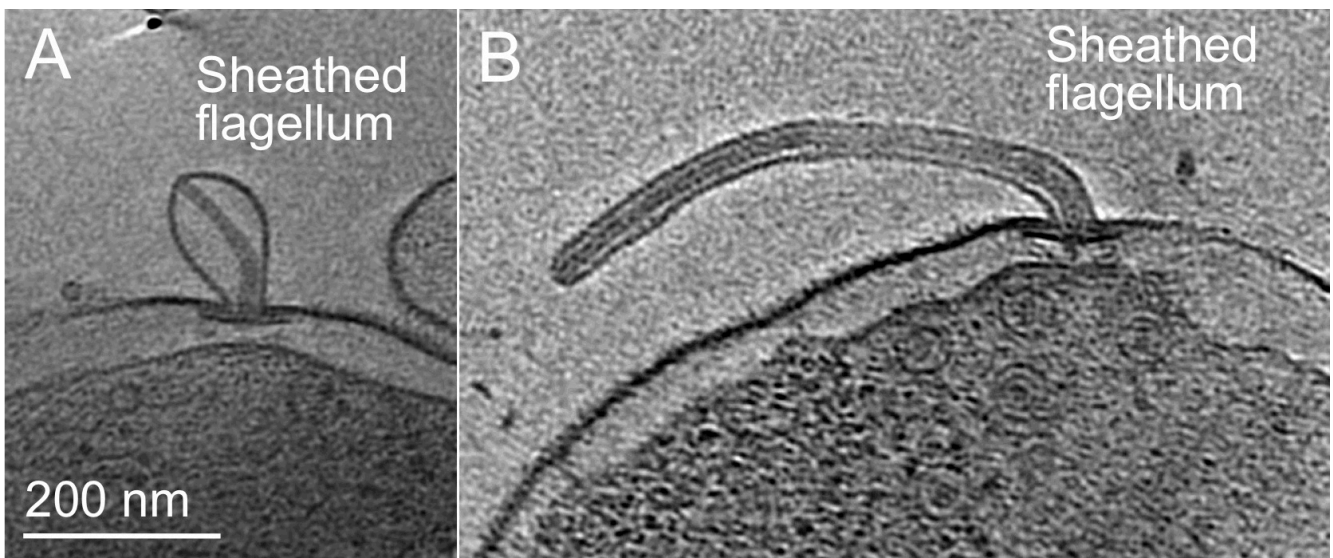


Fig. S4. Tomographic slices show sheathed flagella with variable length. Note that the flagellar filaments are enveloped with membrane sheath.