

Fig. S1. Cellular components (underlined) shared by both NER and BER.

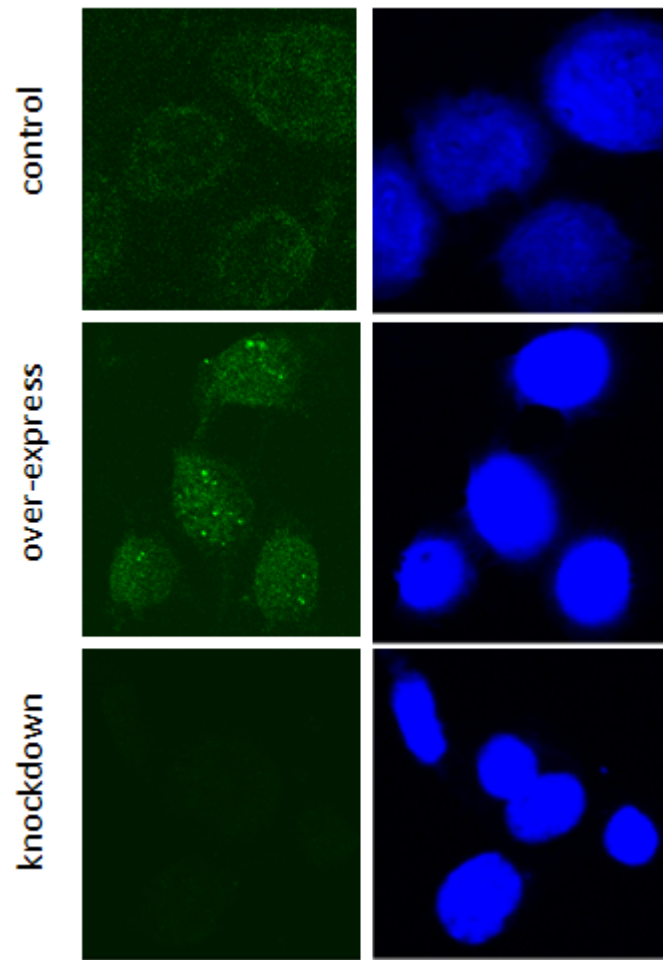


Fig. S2 immunochemical staining of PCNA in cells transfected with empty vector (top panel), wild type PCNA (middle panel) or RNAi PCNA (lowest panel).

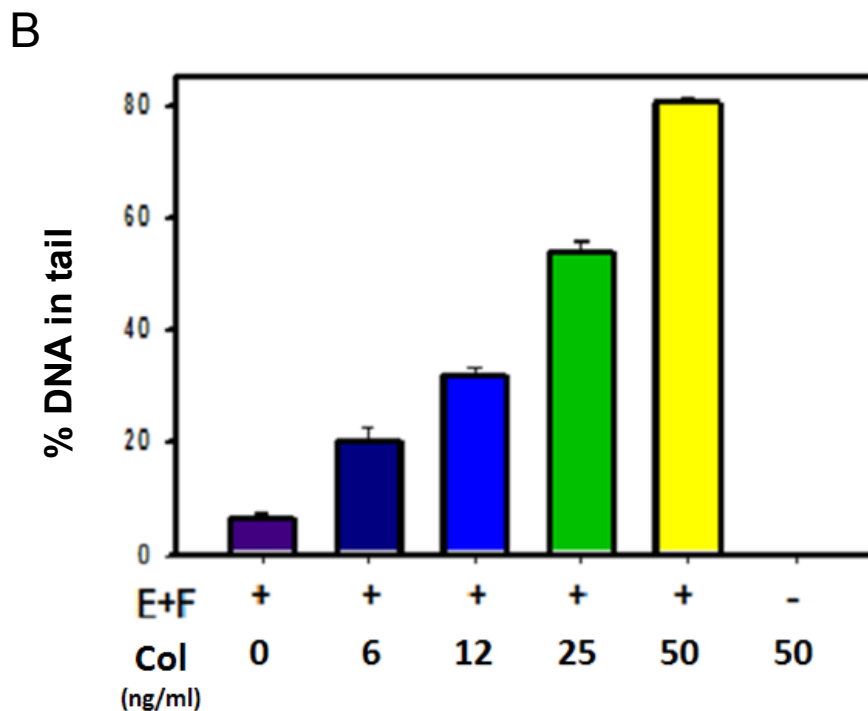
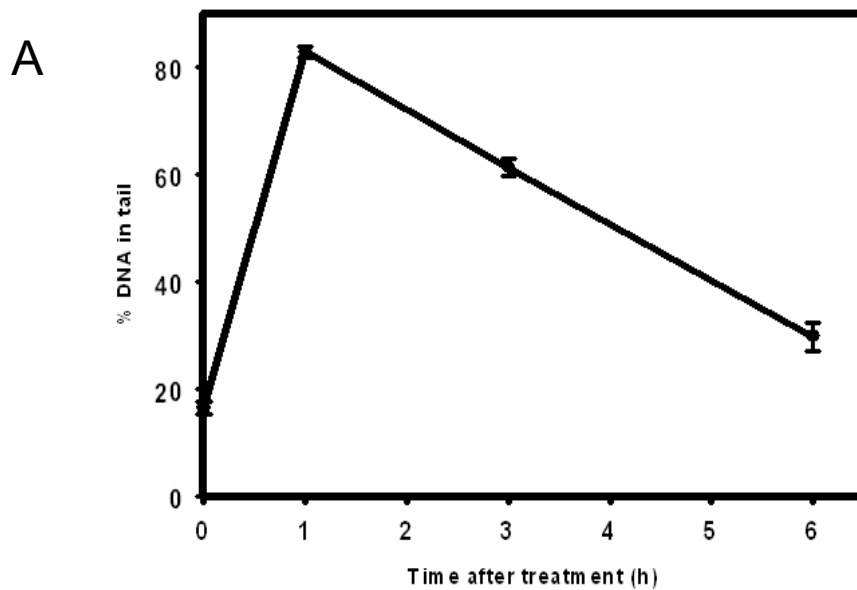


Fig. S3. colcemid-induced oxidative DNA damage (A) kinetics . (B) dose dependence . E+F for endoIII and Fpg  
Oxidative DNA lesions were determined by comet assay with endoIII and Fpg for specific recognition of oxidized pyrimidines and purines, respectively.

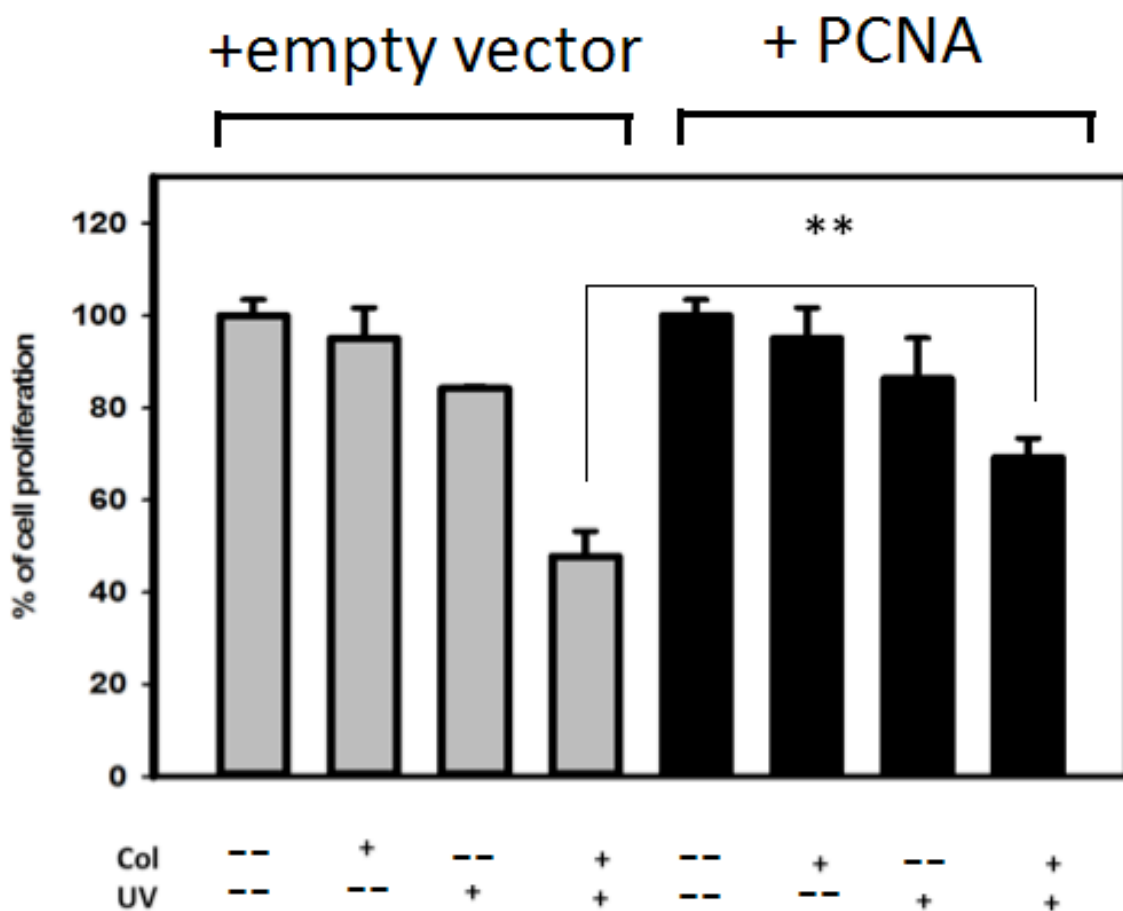


Fig. S4. AGS cells were transfected with EGFP empty vector (gray Bar) or EGFP-wt PCNA (black Bar) were treated with (+) or without (--) colcemid or UV. After 48 h, the cells were harvested for MTS assay. The % cell proliferation is referred to control i.e. no treatment