

**Supporting Information**

**Polymeric Nanovehicle Regulated Spatiotemporal  
Real-Time Imaging of the Differentiation Dynamics  
of Transplanted Neural Stem Cells after Traumatic  
Brain Injury**

Zhe Wang, Yu Wang, Zhiyong Wang, Jun Zhao, J. Silvio Gutkind, Avinash Srivatsan, Guofeng Zhang, Hsien-Shun Liao, Xiao Fu, Albert Jin, Xiao Tong, Gang Niu, Xiaoyuan Chen

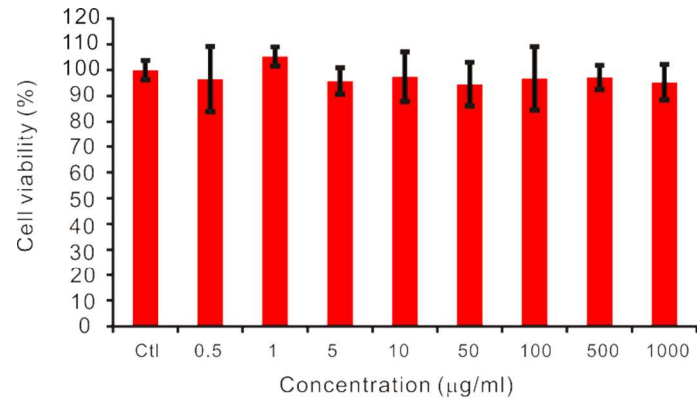


Figure S1. MTT assay of nanovehicle (0.5-1000 µg/mL) to neural stem cells after incubation for 48 h (n = 6).

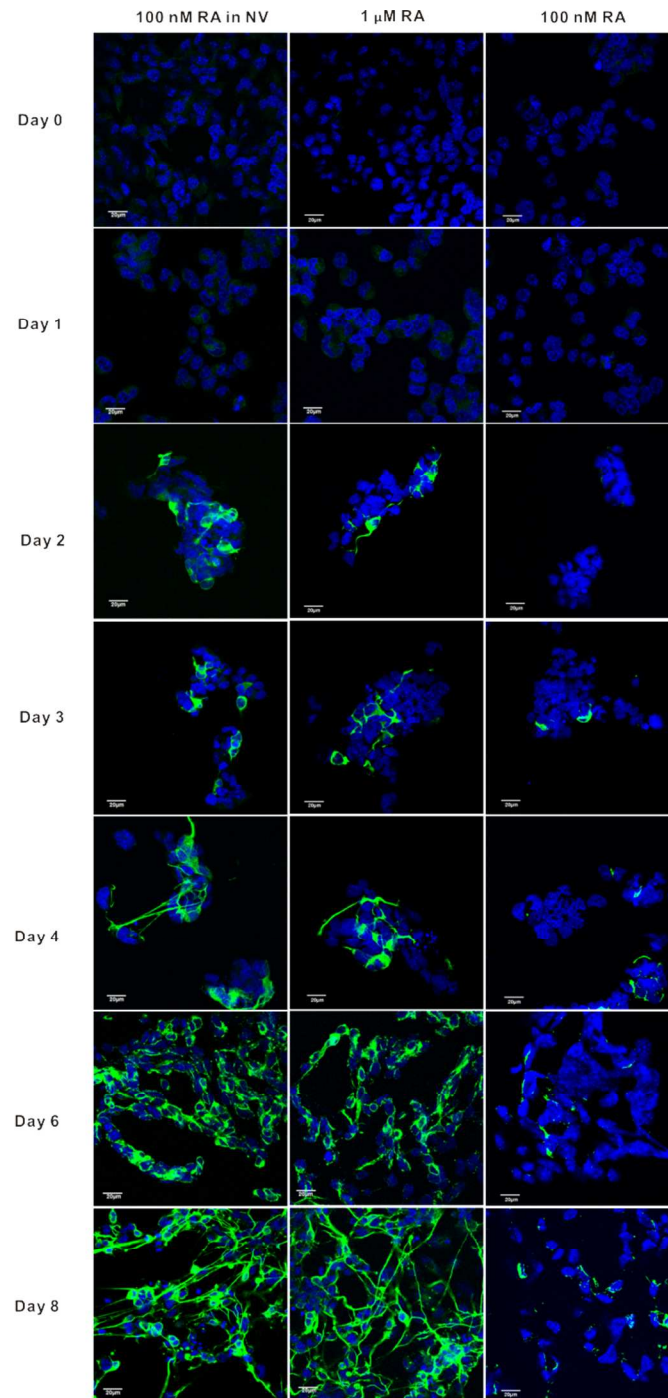


Figure S2. Chronological  $\beta$ III tubulin protein expression of neural stem cells under different stimulation conditions. RA: retinoic acid; NV: nanovehicle. Scale bar = 20  $\mu$ m.

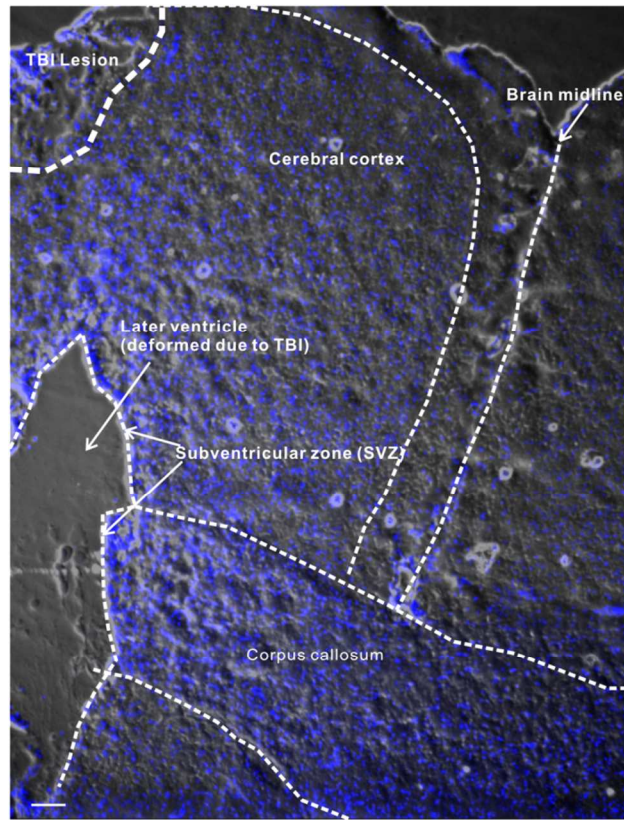


Figure S3. The overview of TBI brain section.

GeneSymb	Health	TBI	NSC	TBI-NSC	TBI-Health	NSC-Health	flag1
Rgn	11.92967	4.933549	5.274742	5.104146	-6.99613	-6.65493	2
Cdx4	8.251138	2.337589	4.149692	3.24364	-5.91355	-4.10145	2
Nim1	12.52169	6.756828	7.464011	7.11042	-5.76486	-5.05768	2
Mia2	8.027189	2.337589	4.823383	3.580486	-5.6896	-3.20381	2
3110009F2	7.852686	2.337589	4.074207	3.205898	-5.5151	-3.77848	2
Ppp4r2	7.811058	2.337589	6.188757	4.263173	-5.47347	-1.6223	1
	7.747962	2.337589	6.098997	4.218293	-5.41037	-1.64896	1
Gm11541	7.462582	2.337589	4.777475	3.557532	-5.12499	-2.68511	2
AA763515	7.252178	2.337589	6.816843	4.577216	-4.91459	-0.43534	1
C730002L0	9.154649	4.37619	6.842811	5.6095	-4.77846	-2.31184	2
Erg	7.09551	2.337589	5.752885	4.045237	-4.75792	-1.34262	1
Eda2r	6.976841	2.337589	4.725915	3.531752	-4.63925	-2.25093	2
	7.783977	3.21099	3.808678	3.509834	-4.57299	-3.9753	2
Npas4	14.09444	9.561727	10.52009	10.04091	-4.53271	-3.57435	2
	6.778178	2.337589	4.170146	3.253867	-4.44059	-2.60803	2
	6.739864	2.337589	4.25676	3.297174	-4.40228	-2.4831	2
Zfp395	7.321386	2.982113	6.117605	4.549859	-4.33927	-1.20378	1
Tbx22	6.650797	2.337589	7.015115	4.676352	-4.31321	0.364318	1
Klhl31	6.627842	2.337589	4.894597	3.616093	-4.29025	-1.73325	1
Trim5	6.553167	2.337589	3.934488	3.136038	-4.21558	-2.61868	2
Mbl2	7.625184	3.509696	4.611227	4.060462	-4.11549	-3.01396	2
Olfr1226	6.417416	2.337589	6.322223	4.329906	-4.07983	-0.09519	1
Slc22a15	8.432885	4.469188	4.699285	4.584236	-3.9637	-3.7336	2
Sprtn	8.434042	4.481246	4.15978	4.320513	-3.9528	-4.27426	2
	6.286188	2.337589	3.893716	3.115652	-3.9486	-2.39247	2
Ttpa	6.593222	2.666132	4.379665	3.522899	-3.92709	-2.21356	2
Gm20867	7.535679	3.696257	4.076555	3.886406	-3.83942	-3.45912	2
Son	8.830904	5.020952	4.638427	4.829689	-3.80995	-4.19248	2
Ino80b	8.943294	5.204048	5.834234	5.519141	-3.73925	-3.10906	2
Fnd3c2	8.536467	4.799212	5.19788	4.998546	-3.73726	-3.33859	2
BC024139	7.681619	3.96018	4.621133	4.290656	-3.72144	-3.06049	2
	11.11627	7.437932	7.53348	7.485706	-3.67834	-3.58279	2
Olfr509	7.974192	4.298178	5.262799	4.780488	-3.67601	-2.71139	2
9230116L0	7.755088	4.08128	3.341761	3.71152	-3.67381	-4.41333	2
	6.007148	2.337589	6.55934	4.448464	-3.66956	0.552191	1
Ranbp17	5.938013	2.337589	5.157947	3.747768	-3.60042	-0.78007	1
	7.966042	4.417629	5.076932	4.74728	-3.54841	-2.88911	2
Vmn2r1	5.861077	2.337589	4.253345	3.295467	-3.52349	-1.60773	1
Gm5771	9.947033	6.446351	7.359866	6.903108	-3.50068	-2.58717	2
Cbln4	8.946865	5.479268	6.22349	5.851379	-3.4676	-2.72338	2
Olfr1122	7.515502	4.086074	4.945604	4.515839	-3.42943	-2.5699	2
Gm5464	5.755631	2.337589	4.398449	3.368019	-3.41804	-1.35718	1
Kalrn	8.046371	4.630534	4.317263	4.473898	-3.41584	-3.72911	2
Dok6	6.707928	3.299782	4.404856	3.852319	-3.40815	-2.30307	2
4933401L0	7.384789	3.999574	5.50758	4.753577	-3.38522	-1.87721	1
4833419O1	6.095522	2.714741	5.794449	4.254595	-3.38078	-0.30107	1

	5.705178	2.337589	5.931512	4.13455	-3.36759	0.226334	1
	7.971079	4.608207	4.197269	4.402738	-3.36287	-3.77381	2
Ahnak	8.57457	5.212013	3.618456	4.415234	-3.36256	-4.95611	2
Kctd4	8.764283	5.411555	5.567372	5.489464	-3.35273	-3.19691	2
Asb11	10.41107	7.080375	8.473063	7.776719	-3.3307	-1.93801	1
Vmn2r13	9.465137	6.138536	6.821298	6.479917	-3.3266	-2.64384	2
Btn2a2	7.782556	4.456891	5.626451	5.041671	-3.32567	-2.15611	2
Egr2	12.68664	9.362333	9.204158	9.283246	-3.32431	-3.48249	2
Gm16432	7.686749	4.36837	4.813476	4.590923	-3.31838	-2.87327	2
Nnt	8.479066	5.194477	5.216985	5.205731	-3.28459	-3.26208	2
Egr4	14.51773	11.24759	11.85551	11.55155	-3.27014	-2.66223	2
Sgtb	10.22113	6.957253	7.384789	7.171021	-3.26387	-2.83634	2
1700092K1	8.361106	5.119666	5.825208	5.472437	-3.24144	-2.5359	2
Cacnb2	5.573839	2.337589	5.651296	3.994442	-3.23625	0.077457	1
Plekhn1	6.863626	3.658861	5.550602	4.604732	-3.20476	-1.31302	1
Sgcd	7.792758	4.589004	3.951232	4.270118	-3.20375	-3.84153	2
Dock10	8.366325	5.165097	5.527844	5.346471	-3.20123	-2.83848	2
Rbm46os	7.557194	4.356671	5.705552	5.031112	-3.20052	-1.85164	1
Adam12	5.531612	2.337589	4.878062	3.607825	-3.19402	-0.65355	1
A430060F1	5.51251	2.337589	6.897166	4.617377	-3.17492	1.384656	1
Myh1	8.827611	5.659538	7.307878	6.483708	-3.16807	-1.51973	1
Gm10334	10.89339	7.726145	8.634218	8.180182	-3.16724	-2.25917	2
	6.468531	3.303468	3.969192	3.63633	-3.16506	-2.49934	2
	6.563939	3.40022	4.144349	3.772284	-3.16372	-2.41959	2
Olf78	9.385087	6.224379	6.24626	6.235319	-3.16071	-3.13883	2
	7.175107	4.034265	4.430774	4.232519	-3.14084	-2.74433	2
Myl4	14.46777	11.331	12.32156	11.82628	-3.13678	-2.14621	2
	7.611939	4.478144	4.47831	4.478227	-3.1338	-3.13363	2
	9.452726	6.324738	7.162434	6.743586	-3.12799	-2.29029	2
Ptpn7	8.086794	4.964327	4.591067	4.777697	-3.12247	-3.49573	2
C030013G	9.071536	5.969176	7.491195	6.730186	-3.10236	-1.58034	1
Nr4a1	15.15407	12.05548	12.54666	12.30107	-3.09859	-2.60742	2
	10.3694	7.290176	8.394519	7.842348	-3.07922	-1.97488	1
Scn9a	6.921053	3.843311	6.975199	5.409255	-3.07774	0.054146	1
	7.082787	4.006262	4.638906	4.322584	-3.07652	-2.44388	2
	7.520008	4.462921	5.530629	4.996775	-3.05709	-1.98938	1
	8.125724	5.094955	4.611717	4.853336	-3.03077	-3.51401	2
Slc17a3	5.360773	2.337589	4.381914	3.359751	-3.02318	-0.97886	1
Ocm	9.765499	6.749796	7.26872	7.009258	-3.0157	-2.49678	2
Olf33	6.876772	3.863817	5.365248	4.614532	-3.01296	-1.51152	1
1700091H1	6.461504	3.456044	4.877524	4.166784	-3.00546	-1.58398	1
Nipbl	7.877714	4.881791	4.515113	4.698452	-2.99592	-3.3626	2
Gm10372	8.34179	5.35144	5.709279	5.53036	-2.99035	-2.63251	2
Spink3	6.880838	3.894973	5.677663	4.786318	-2.98587	-1.20318	1
Arl4d	12.65009	9.682883	10.01499	9.848935	-2.96721	-2.63511	2
	5.300859	2.337589	4.622007	3.479798	-2.96327	-0.67885	1
A730090N	7.817491	4.857794	4.911197	4.884496	-2.9597	-2.90629	2

Col24a1	9.838614	6.881814	7.321386	7.1016	-2.9568	-2.51723	2
Hook3	8.871155	5.916326	8.328892	7.122609	-2.95483	-0.54226	1
	7.4422	4.514454	4.216949	4.365702	-2.92775	-3.22525	2
Krt25	7.325148	4.40058	2.322894	3.361737	-2.92457	-5.00225	2
Hmga1	7.143911	4.225092	3.901435	4.063263	-2.91882	-3.24248	2
Scube1	9.882284	6.964002	8.255209	7.609605	-2.91828	-1.62708	1
	5.566536	2.648767	3.963432	3.306099	-2.91777	-1.6031	1
AU015558	5.252174	2.337589	5.055149	3.696369	-2.91459	-0.19703	1
Arc	15.73118	12.83977	13.11283	12.9763	-2.89141	-2.61835	2
Abcb5	5.225365	2.337589	5.093551	3.71557	-2.88778	-0.13181	1
Olfr448	8.304401	5.425909	5.812849	5.619379	-2.87849	-2.49155	2
	6.944649	4.066498	3.928155	3.997327	-2.87815	-3.01649	2
	10.42332	7.545698	8.458736	8.002217	-2.87762	-1.96459	1
Gm14085	7.301259	4.433585	3.881177	4.157381	-2.86767	-3.42008	2
Dpys	7.023612	4.16389	5.380977	4.772434	-2.85972	-1.64263	1
Olfr683	5.195421	2.337589	4.164752	3.25117	-2.85783	-1.03067	1
Klf17	12.28366	9.430914	10.44836	9.939637	-2.85274	-1.8353	1
Cass4	5.186347	2.337589	4.405128	3.371358	-2.84876	-0.78122	1
Ropn1	5.837631	2.989955	4.689085	3.83952	-2.84768	-1.14855	1
Cntln	8.466564	5.620445	5.372275	5.49636	-2.84612	-3.09429	2
Arr3	9.657125	6.819534	7.552699	7.186117	-2.83759	-2.10443	2
Frrs1l	7.079001	4.25475	8.622512	6.438631	-2.82425	1.543511	1
Nr3c1	6.586201	3.766244	4.632864	4.199554	-2.81996	-1.95334	1
Sost	8.153357	5.334334	5.490503	5.412419	-2.81902	-2.66285	2
Lamp5	11.63978	8.822487	8.764283	8.793385	-2.81729	-2.8755	2
Gm5524	6.30396	3.489303	4.706026	4.097664	-2.81466	-1.59793	1
	10.18985	7.375888	7.707443	7.541665	-2.81396	-2.4824	2
4930406D1	5.151228	2.337589	4.672198	3.504893	-2.81364	-0.47903	1
	5.144764	2.337589	5.36479	3.851189	-2.80718	0.220025	1
Spock1	10.7559	7.95048	8.336594	8.143537	-2.80542	-2.41931	2
Ankrd34c	8.973342	6.168088	7.240657	6.704373	-2.80525	-1.73269	1
Podxl	9.401587	6.600991	7.888833	7.244912	-2.8006	-1.51275	1
Cacnb4	10.33397	7.534111	7.929313	7.731712	-2.79986	-2.40465	2
Gm11497	6.038009	3.243481	4.488276	3.865879	-2.79453	-1.54973	1
2010107G1	5.123568	2.337589	4.6081	3.472844	-2.78598	-0.51547	1
	12.45513	9.675628	10.7158	10.19571	-2.7795	-1.73933	1
	5.110347	2.337589	4.801163	3.569376	-2.77276	-0.30918	1
Vmn1r206	12.34752	9.591664	9.795649	9.693657	-2.75586	-2.55187	2
H2-Q10	7.197557	4.442429	3.844737	4.143583	-2.75513	-3.35282	2
Mcpt9	11.01121	8.265297	9.358577	8.811937	-2.74591	-1.65263	1
Pld5	10.42728	7.686749	8.926182	8.306465	-2.74053	-1.50109	1
Proser2	11.07721	8.337699	8.307755	8.322727	-2.73951	-2.76946	2
Arl4d	12.42516	9.688652	9.894045	9.791349	-2.73651	-2.53111	2
Kcnh5	10.12633	7.390026	7.955537	7.672782	-2.7363	-2.17079	2
	7.703741	4.994054	5.702103	5.348078	-2.70969	-2.00164	2
Lancl3	6.463857	3.756042	4.997551	4.376797	-2.70781	-1.46631	1
Hmgcll1	12.70236	10.00032	10.47637	10.23834	-2.70203	-2.22599	2

4933415J0	7.827212	5.130978	4.774622	4.9528	-2.69623	-3.05259	2
Gpr133	7.208438	4.517931	6.677987	5.597959	-2.69051	-0.53045	1
	8.808365	6.124711	5.225264	5.674987	-2.68365	-3.5831	2
Vmn2r75	7.069259	4.396949	4.196579	4.296764	-2.67231	-2.87268	2
Kcnf1	7.160228	4.488276	4.712311	4.600294	-2.67195	-2.44792	2
Olfr859	5.80676	3.135082	3.812498	3.47379	-2.67168	-1.99426	1
Egr1	15.39053	12.72487	13.42973	13.0773	-2.66566	-1.9608	1
Clca6	8.191411	5.529678	5.558696	5.544187	-2.66173	-2.63271	2
	12.21238	9.558115	10.53715	10.04763	-2.65427	-1.67523	1
Wee2	4.989603	2.337589	7.993508	5.165548	-2.65201	3.003905	1
Asb11	10.72054	8.069246	8.936535	8.502891	-2.6513	-1.78401	1
Tmlhe	10.19593	7.545363	7.670713	7.608038	-2.65057	-2.52522	2
Ssty1	6.752191	4.10512	3.950066	4.027593	-2.64707	-2.80213	2
Rtfdc1	7.421699	4.777475	3.226255	4.001865	-2.64422	-4.19544	2
	6.825636	4.183731	2.322894	3.253312	-2.64191	-4.50274	2
Coch	11.88707	9.253165	10.74283	9.997996	-2.6339	-1.14424	1
Ankrd45	12.51827	9.888916	10.73092	10.30992	-2.62936	-1.78735	1
	5.150371	2.524104	4.774252	3.649178	-2.62627	-0.37612	1
Scn4b	12.74069	10.11967	10.50512	10.31239	-2.62102	-2.23557	2
Cap2	11.44848	8.829868	9.673636	9.251752	-2.61861	-1.77484	1
Fbln5	6.374549	3.761556	4.37038	4.065968	-2.61299	-2.00417	2
Myh2	10.35913	7.749316	8.915898	8.332607	-2.60982	-1.44324	1
	5.328369	2.733132	5.770681	4.251907	-2.59524	0.442312	1
Krt12	13.39821	10.80299	11.70006	11.25152	-2.59523	-1.69815	1
Mfsd4	11.59556	9.001981	9.946551	9.474266	-2.59358	-1.64901	1
Spred3	7.576147	4.982914	5.259709	5.121312	-2.59323	-2.31644	2
Nxf7	9.47754	6.888399	7.814478	7.351439	-2.58914	-1.66306	1
Prss55	7.418179	4.834072	5.301152	5.067612	-2.58411	-2.11703	2
	4.918965	2.337589	4.073444	3.205516	-2.58138	-0.84552	1
	10.09776	7.519255	8.142221	7.830738	-2.57851	-1.95554	1
A730017C2	5.536984	2.962279	4.808017	3.885148	-2.57471	-0.72897	1
Tcap	10.36136	7.786868	7.361661	7.574265	-2.57449	-2.9997	2
Dusp1	13.52209	10.94929	11.24399	11.09664	-2.57281	-2.2781	2
Gm4081	6.970571	4.410575	4.601518	4.506046	-2.56	-2.36905	2
Slc23a3	10.44953	7.889857	7.865989	7.877923	-2.55967	-2.58354	2
Strbp	7.651241	5.096728	4.685854	4.891291	-2.55451	-2.96539	2
Rgs4	11.31772	8.764794	9.67586	9.220327	-2.55292	-1.64186	1
Pcgf2	7.244004	4.692226	3.833078	4.262652	-2.55178	-3.41093	2
Xpo7	7.954231	5.405627	5.572437	5.489032	-2.5486	-2.38179	2
Ccbe1	6.967214	4.424029	4.135634	4.279832	-2.54318	-2.83158	2
	6.834623	4.29443	2.322894	3.308662	-2.54019	-4.51173	2
	7.793445	5.254155	6.260028	5.757092	-2.53929	-1.53342	1
	11.92011	9.380896	10.21942	9.800156	-2.53921	-1.70069	1
4930429B2	10.419	7.880009	9.171001	8.525505	-2.539	-1.248	1
Tspan11	7.721417	5.184062	5.311269	5.247665	-2.53736	-2.41015	2
Tet3	7.398705	4.865892	7.240211	6.053051	-2.53281	-0.15849	1
Olfr640	4.870223	2.337589	4.641829	3.489709	-2.53263	-0.22839	1



Pik3c2g	12.95522	10.42678	11.10818	10.76748	-2.52844	-1.84704	1
	4.861451	2.337589	4.70616	3.521874	-2.52386	-0.15529	1
Gm12371	11.0745	8.551103	8.790955	8.671029	-2.52339	-2.28354	2
Hkdc1	12.47999	9.961831	11.0705	10.51616	-2.51816	-1.40949	1
Exoc3l	4.852862	2.337589	4.142933	3.240261	-2.51527	-0.70993	1
	8.519517	6.004303	5.868039	5.936171	-2.51521	-2.65148	2
Tmc1	6.714059	4.199486	4.729954	4.46472	-2.51457	-1.9841	1
Cpne9	13.20183	10.69039	11.55088	11.12063	-2.51144	-1.65095	1
	7.562398	5.065725	4.950739	5.008232	-2.49667	-2.61166	2
Kcnv1	13.00691	10.51597	11.92828	11.22213	-2.49094	-1.07863	1
Cadps2	6.843552	4.357901	5.253397	4.805649	-2.48565	-1.59016	1
Gbp8	8.263356	5.7854	6.534898	6.160149	-2.47796	-1.72846	1
Cited2	10.97517	8.497457	8.855036	8.676247	-2.47771	-2.12013	2
Zfp264	6.972545	4.497228	6.405628	5.451428	-2.47532	-0.56692	1
5330411J1	4.809815	2.337589	4.613918	3.475753	-2.47223	-0.1959	1
Rbfox3	11.49643	9.025139	9.393981	9.20956	-2.47129	-2.10245	2
4933439N1	9.581355	7.112585	7.962952	7.537768	-2.46877	-1.6184	1
Fam151b	7.135352	4.666988	5.421029	5.044008	-2.46836	-1.71432	1
1500035N2	9.717183	7.25133	7.504556	7.377943	-2.46585	-2.21263	2
Kcnq5	11.5736	9.109338	9.164155	9.136747	-2.46426	-2.40944	2
	4.801587	2.337589	6.144433	4.241011	-2.464	1.342846	1
	7.524588	5.060773	5.352385	5.206579	-2.46382	-2.1722	2
Elavl4	6.574003	4.113834	4.929547	4.521691	-2.46017	-1.64446	1
Wdtdc1	11.74033	9.283353	9.994813	9.639083	-2.45697	-1.74551	1
Rspo1	13.25199	10.79783	11.31071	11.05427	-2.45415	-1.94128	1
Satb2	9.424171	6.972138	6.749615	6.860877	-2.45203	-2.67456	2
Nhsl2	10.22965	7.779717	8.499687	8.139702	-2.44993	-1.72996	1
Slc10a2	4.774901	2.337589	5.398654	3.868121	-2.43731	0.623753	1
Gpr137c	7.140966	4.715224	4.628482	4.671853	-2.42574	-2.51248	2
Gabre	13.04931	10.63412	11.4544	11.04426	-2.41519	-1.59491	1
Olfir545	8.179853	5.769723	6.05186	5.910792	-2.41013	-2.12799	2
Sowahb	7.458251	5.05975	5.208363	5.134056	-2.3985	-2.24989	2
LOC100048	8.117058	5.723064	5.595733	5.659398	-2.39399	-2.52133	2
Fbln1	8.441767	6.049267	5.891062	5.970165	-2.3925	-2.55071	2
Pcsk1	9.769536	7.377888	8.510832	7.94436	-2.39165	-1.2587	1
Dkk1	14.3653	11.97556	12.49444	12.235	-2.38974	-1.87087	1
Slc17a8	10.41043	8.021011	8.895072	8.458042	-2.38942	-1.51536	1
	8.735394	6.346428	5.684929	6.015679	-2.38897	-3.05046	2
Slc39a9	6.116399	3.739418	4.155128	3.947273	-2.37698	-1.96127	1
Glp2r	8.056112	5.67931	6.561566	6.120438	-2.3768	-1.49455	1
Gpr112	6.680188	4.303389	5.545034	4.924212	-2.3768	-1.13515	1
Ccl27a	10.54121	8.165287	8.138263	8.151775	-2.37592	-2.40294	2
Sdcbp	7.625469	5.251223	2.997272	4.124247	-2.37425	-4.6282	2
Ppm1l	11.03528	8.661948	9.156313	8.909131	-2.37333	-1.87897	1
1700080N1	6.5958	4.223815	5.523125	4.87347	-2.37199	-1.07268	1
Cyp4a31	13.16553	10.79483	11.65549	11.22516	-2.3707	-1.51004	1
Sp140	8.467968	6.099905	6.381924	6.240914	-2.36806	-2.08604	2

Proser2	9.340793	6.975199	7.111377	7.043288	-2.36559	-2.22942	2
Fst	9.335012	6.970309	8.363075	7.666692	-2.3647	-0.97194	1
Eqtn	12.31422	9.949564	10.80854	10.37905	-2.36466	-1.50569	1
Tyms	13.77778	11.41571	12.2114	11.81356	-2.36206	-1.56638	1
Aqp6	8.771694	6.411061	9.301436	7.856249	-2.36063	0.529742	1
Cartpt	11.07536	8.714945	8.312002	8.513474	-2.36041	-2.76336	2
Tex40	13.28229	10.92198	11.21585	11.06892	-2.36031	-2.06644	2
4933402J0	4.693312	2.337589	4.870681	3.604135	-2.35572	0.177369	1
Olfr985	7.154147	4.79843	4.127788	4.463109	-2.35572	-3.02636	2
	11.31111	8.959236	8.35773	8.658483	-2.35188	-2.95338	2
C730029AC	8.210816	5.862878	4.917359	5.390119	-2.34794	-3.29346	2
Gabra2	6.621182	4.273403	4.428964	4.351183	-2.34778	-2.19222	2
	10.97508	8.629077	9.795017	9.212047	-2.346	-1.18006	1
Slitrk4	11.33831	9.000301	9.281221	9.140761	-2.33801	-2.05709	2
Rgs4	16.08802	13.7512	15.00002	14.37561	-2.33682	-1.08799	1
Gm5665	7.510901	5.180471	5.374541	5.277506	-2.33043	-2.13636	2
	10.99217	8.663505	9.389369	9.026437	-2.32866	-1.6028	1
Mpl	8.844142	6.51817	6.949285	6.733728	-2.32597	-1.89486	1
Arhgap15	12.735	10.40978	11.66739	11.03858	-2.32523	-1.06761	1
Zswim4	7.7977	5.474662	5.249476	5.362069	-2.32304	-2.54822	2
Gm3510	12.00941	9.691345	9.842994	9.76717	-2.31807	-2.16642	2
	10.7533	8.435509	9.182339	8.808924	-2.3178	-1.57097	1
Coro2a	8.018199	5.70065	5.529087	5.614868	-2.31755	-2.48911	2
Zdhhc8	13.26081	10.94987	11.26248	11.10618	-2.31094	-1.99833	1
	11.87632	9.570522	10.40811	9.989317	-2.3058	-1.46821	1
1700013M	4.643173	2.337589	3.895978	3.116783	-2.30558	-0.7472	1
Hr	13.38596	11.08077	11.61708	11.34893	-2.30519	-1.76887	1
Lrrtm4	5.503489	3.202214	4.904792	4.053503	-2.30128	-0.5987	1
Ren1	11.94641	9.645968	10.43182	10.03889	-2.30044	-1.51459	1
Gabrg2	7.784126	5.484019	5.078012	5.281015	-2.30011	-2.70611	2
Vmn2r85	9.328056	7.029669	8.202211	7.61594	-2.29839	-1.12585	1
Zmym2	4.979324	2.68187	6.054579	4.368224	-2.29745	1.075255	1
Cyp2j5	4.625278	2.337589	6.247639	4.292614	-2.28769	1.622361	1
	5.931274	3.644483	5.829818	4.73715	-2.28679	-0.10146	1
Ndst1	8.073396	5.788987	5.162063	5.475525	-2.28441	-2.91133	2
Olfr279	9.448273	7.164534	6.954166	7.05935	-2.28374	-2.49411	2
Gm2795	7.808352	5.531612	7.303828	6.41772	-2.27674	-0.50452	1
	13.76666	11.49064	12.21672	11.85368	-2.27602	-1.54994	1
Nkx3-1	9.21802	6.942346	7.560062	7.251204	-2.27567	-1.65796	1
Sema3a	12.15178	9.876666	10.5225	10.19958	-2.27512	-1.62929	1
Nanos1	13.28326	11.00859	11.3431	11.17584	-2.27467	-1.94017	1
4930592AC	8.200911	5.927026	5.923809	5.925417	-2.27388	-2.2771	2
Al451458	8.701223	6.428686	6.775892	6.602289	-2.27254	-1.92533	1
Mup17	7.859285	5.587018	4.898385	5.242701	-2.27227	-2.9609	2
Cyp4a10	12.93424	10.66446	11.42535	11.0449	-2.26979	-1.50889	1
Npy	13.92427	11.65549	13.23515	12.44532	-2.26878	-0.68912	1
	7.957505	5.691872	5.638924	5.665398	-2.26563	-2.31858	2

Cngb3	8.479496	6.217856	7.309847	6.763851	-2.26164	-1.16965	1
Olf121	6.217574	3.958502	5.690591	4.824546	-2.25907	-0.52698	1
Abi3bp	9.265922	7.010419	6.82704	6.91873	-2.2555	-2.43888	2
Elavl2	11.8629	9.609819	10.78496	10.19739	-2.25308	-1.07794	1
Wnt9a	12.95462	10.70191	10.91394	10.80792	-2.25271	-2.04068	2
Klra5	9.663637	7.412207	8.039906	7.726057	-2.25143	-1.62373	1
	11.22453	8.974538	9.766873	9.370706	-2.24999	-1.45766	1
	9.999268	7.750658	8.303549	8.027103	-2.24861	-1.69572	1
C2cd4d	7.205424	4.96102	4.692002	4.826511	-2.2444	-2.51342	2
Defa23	7.25593	5.012165	4.926402	4.969283	-2.24376	-2.32953	2
Arl9	12.07728	9.834491	10.55301	10.19375	-2.24279	-1.52426	1
Cadps2	12.45959	10.21854	11.05802	10.63828	-2.24105	-1.40157	1
	7.526572	5.287962	5.53717	5.412566	-2.23861	-1.9894	1
Zc3h12c	11.92162	9.68579	10.81479	10.25029	-2.23583	-1.10683	1
Gata4	9.72006	7.486027	8.080417	7.783222	-2.23403	-1.63964	1
	6.444178	4.21074	5.647459	4.929099	-2.23344	-0.79672	1
Lpp	7.883006	5.651296	5.871679	5.761488	-2.23171	-2.01133	2
Rad51ap2	9.734106	7.504556	8.271352	7.887954	-2.22955	-1.46275	1
Gm10426	6.869714	4.641829	6.453794	5.547811	-2.22789	-0.41592	1
Slc51b	7.227979	5.005344	4.851383	4.928364	-2.22263	-2.3766	2
Mtus2	7.75908	5.537278	5.413125	5.475201	-2.2218	-2.34596	2
Tbc1d30	12.58279	10.36404	10.8084	10.58622	-2.21875	-1.77439	1
1500016L0	10.2172	8.002027	8.920281	8.461154	-2.21517	-1.29692	1
Xylt2	12.78699	10.57704	11.20087	10.88896	-2.20994	-1.58611	1
	6.946402	4.737051	4.932034	4.834543	-2.20935	-2.01437	2
Pthlh	9.863516	7.657348	8.577024	8.117186	-2.20617	-1.28649	1
AU040320	8.012518	5.806383	6.586201	6.196292	-2.20614	-1.42632	1
Pdp1	15.25343	13.04754	13.85515	13.45134	-2.2059	-1.39829	1
Hcrtr1	8.426184	6.221263	7.335961	6.778612	-2.20492	-1.09022	1
	5.930904	3.72854	4.167881	3.948211	-2.20236	-1.76302	1
Col4a6	13.02639	10.82414	11.20895	11.01655	-2.20225	-1.81744	1
Ap2m1	7.102051	4.900962	5.566536	5.233749	-2.20109	-1.53552	1
AI835735	7.271715	5.071159	4.669218	4.870188	-2.20056	-2.6025	2
Fam132b	6.961409	4.761433	4.280088	4.520761	-2.19998	-2.68132	2
	12.60694	10.40954	11.10757	10.75856	-2.1974	-1.49936	1
	7.542317	5.34761	5.657479	5.502544	-2.19471	-1.88484	1
Neu2	11.93496	9.740515	10.09793	9.919223	-2.19445	-1.83703	1
Cldn22	9.410463	7.222799	8.571675	7.897237	-2.18766	-0.83879	1
LOC101056	13.53907	11.35375	11.9458	11.64977	-2.18532	-1.59327	1
Slc7a14	7.146598	4.963625	4.992999	4.978312	-2.18297	-2.1536	2
Wdr13	7.222981	5.040397	5.030349	5.035373	-2.18258	-2.19263	2
Txlng	13.27778	11.09587	11.90205	11.49896	-2.18191	-1.37573	1
	6.564652	4.384159	4.377986	4.381073	-2.18049	-2.18667	2
Grip1	13.95116	11.77249	12.56255	12.16752	-2.17867	-1.38861	1
Defb23	5.420694	3.24224	4.254227	3.748234	-2.17845	-1.16647	1
Skint3	6.792825	4.614862	4.941303	4.778083	-2.17796	-1.85152	1
Gm17501	9.324876	7.148088	7.842098	7.495093	-2.17679	-1.48278	1

1700041C2	5.011627	2.835643	4.441298	3.63847	-2.17598	-0.57033	1
Cyp2e1	7.489056	5.314498	6.156738	5.735618	-2.17456	-1.33232	1
Ang3	13.21741	11.04298	11.78209	11.41254	-2.17443	-1.43532	1
Hes3	8.33209	6.160218	6.692292	6.426255	-2.17187	-1.6398	1
Vmn2r121	10.40802	8.236182	9.526073	8.881128	-2.17183	-0.88194	1
Obox6	5.239833	3.068067	5.379298	4.223683	-2.17177	0.139465	1
Prss16	7.300197	5.128439	5.979077	5.553758	-2.17176	-1.32112	1
	7.877189	5.709962	6.028095	5.869029	-2.16723	-1.84909	1
Kiss1	9.190905	7.024215	6.644146	6.83418	-2.16669	-2.54676	2
Hcrtr1	8.100164	5.939971	7.171852	6.555911	-2.16019	-0.92831	1
Krtap10-4	10.63566	8.476313	9.279188	8.877751	-2.15935	-1.35647	1
Map3k13	12.78298	10.62411	11.37129	10.9977	-2.15887	-1.41169	1
Vip	11.55837	9.402103	10.43504	9.918571	-2.15626	-1.12333	1
Vmn2r12	8.187261	6.031768	6.86479	6.448279	-2.15549	-1.32247	1
	10.61649	8.461176	9.265503	8.86334	-2.15531	-1.35099	1
Tmem132c	10.71333	8.558159	9.360147	8.959153	-2.15517	-1.35318	1
Milr1	14.46989	12.31937	12.76874	12.54405	-2.15052	-1.70115	1
Smco2	8.21646	6.068914	6.411673	6.240294	-2.14755	-1.80479	1
Allc	8.44066	6.295027	6.922706	6.608867	-2.14563	-1.51795	1
Fzd4	10.76595	8.620749	8.999381	8.810065	-2.1452	-1.76657	1
	9.128155	6.984565	7.774114	7.379339	-2.14359	-1.35404	1
Apol10a	7.437523	5.296941	5.570017	5.433479	-2.14058	-1.86751	1
	8.666927	6.530154	7.721878	7.126016	-2.13677	-0.94505	1
Pnma5	5.583393	3.44702	4.250754	3.848887	-2.13637	-1.33264	1
Kcnc2	13.07455	10.93854	11.64967	11.29411	-2.13601	-1.42488	1
Map3k5	6.697448	4.561704	4.142443	4.352073	-2.13574	-2.55501	2
	8.968781	6.833454	7.148088	6.990771	-2.13533	-1.82069	1
	7.449226	5.314695	5.109729	5.212212	-2.13453	-2.3395	2
Gria2	9.995332	7.861264	7.849451	7.855357	-2.13407	-2.14588	2
Gm20878	11.69297	9.559731	10.01992	9.789828	-2.13324	-1.67304	1
Sftpb	5.661809	3.528686	5.579057	4.553871	-2.13312	-0.08275	1
	12.5763	10.44451	10.60526	10.52488	-2.13179	-1.97104	1
	7.670888	5.539733	5.886508	5.71312	-2.13116	-1.78438	1
Krt75	7.413435	5.285222	6.235726	5.760474	-2.12821	-1.17771	1
Mlip	10.07309	7.950803	8.542901	8.246852	-2.12229	-1.53019	1
	5.053174	2.931714	5.330245	4.13098	-2.12146	0.277072	1
Slamf1	7.209875	5.089121	5.175265	5.132193	-2.12075	-2.03461	2
Gm20878	10.16833	8.050613	7.936862	7.993737	-2.11772	-2.23147	2
	10.73884	8.621922	9.657863	9.139893	-2.11691	-1.08097	1
Colq	8.323053	6.207859	6.75951	6.483684	-2.11519	-1.56354	1
	10.89668	8.785756	9.09804	8.941898	-2.11092	-1.79864	1
Klra16	11.81207	9.702466	10.51876	10.11061	-2.1096	-1.29331	1
Ttc9b	12.75799	10.65354	9.938324	10.29593	-2.10445	-2.81966	2
41708	7.061468	4.957274	5.813733	5.385503	-2.10419	-1.24774	1
Sgcg	8.50009	6.396514	7.19041	6.793462	-2.10358	-1.30968	1
Dlx6os1	7.385538	5.282779	6.49309	5.887934	-2.10276	-0.89245	1
Med18	12.62583	10.52403	11.20315	10.86359	-2.1018	-1.42268	1

493059702	12.02615	9.928094	10.51247	10.22028	-2.09806	-1.51368	1
Cadps2	10.64453	8.551663	9.33686	8.944262	-2.09287	-1.30767	1
Hrg	12.60883	10.5169	11.20276	10.85983	-2.09194	-1.40607	1
	8.847912	6.758912	6.299727	6.52932	-2.089	-2.54818	2
Nrxn3	6.94002	4.851383	5.649358	5.25037	-2.08864	-1.29066	1
Mettl7a3	14.04999	11.96277	12.79734	12.38006	-2.08722	-1.25265	1
	7.122795	5.036057	2.486948	3.761502	-2.08674	-4.63585	2
492151701	6.437617	4.351392	4.38694	4.369166	-2.08623	-2.05068	2
Nkain2	5.438345	3.353275	4.44458	3.898927	-2.08507	-0.99377	1
	8.267638	6.185337	6.253148	6.219242	-2.0823	-2.01449	2
Fmo5	8.855851	6.774093	7.460846	7.11747	-2.08176	-1.395	1
Vmn2r11	8.053645	5.974626	6.517562	6.246094	-2.07902	-1.53608	1
1700086L1	5.008888	2.934399	4.684552	3.809475	-2.07449	-0.32434	1
Olfr341	7.022336	4.955053	3.72854	4.341797	-2.06728	-3.2938	2
Zfp605	5.655324	3.588254	5.517563	4.552909	-2.06707	-0.13776	1
Arhgap20	11.43811	9.373561	9.456784	9.415173	-2.06455	-1.98132	1
Cadm2	11.39138	9.327166	10.03196	9.679563	-2.06421	-1.35942	1
3110047P2	10.01054	7.946724	8.719548	8.333136	-2.06382	-1.29099	1
D3Bwg056	9.281962	7.219531	8.077701	7.648616	-2.06243	-1.20426	1
Gm1661	8.569215	6.506815	7.118424	6.81262	-2.0624	-1.45079	1
Kcnt2	5.959412	3.900822	4.710457	4.30564	-2.05859	-1.24895	1
1700003M	7.907022	5.849243	6.11531	5.982276	-2.05778	-1.79171	1
Grk4	14.07684	12.02059	12.80907	12.41483	-2.05625	-1.26777	1
	9.368791	7.31363	8.097189	7.70541	-2.05516	-1.2716	1
	9.642916	7.58853	8.191626	7.890078	-2.05439	-1.45129	1
Olfr738	12.1213	10.067	11.01748	10.54224	-2.0543	-1.10382	1
Ext2	9.005414	6.953022	7.472713	7.212867	-2.05239	-1.5327	1
Lingo1	10.92544	8.873145	9.322558	9.097852	-2.0523	-1.60289	1
Masp1	12.3012	10.24935	10.57114	10.41025	-2.05185	-1.73006	1
Map1b	14.5322	12.48104	13.201	12.84102	-2.05116	-1.3312	1
	7.508283	5.457842	5.457479	5.457661	-2.05044	-2.0508	2
Stxbp5l	5.749124	3.699842	3.97502	3.837431	-2.04928	-1.7741	1
A630038E1	4.92209	2.87427	4.435981	3.655126	-2.04782	-0.48611	1
Olfr912	4.685308	2.637751	4.262769	3.45026	-2.04756	-0.42254	1
Vmn2r61	8.899204	6.853196	7.585595	7.219395	-2.04601	-1.31361	1
Il12a	7.39117	5.346578	6.746006	6.046292	-2.04459	-0.64516	1
Glp2r	10.60692	8.562476	9.57249	9.067483	-2.04445	-1.03443	1
	8.440767	6.396893	6.713552	6.555222	-2.04387	-1.72722	1
Ang	13.77289	11.73003	12.56028	12.14515	-2.04287	-1.21261	1
Ifna2	7.191518	5.152008	5.220608	5.186308	-2.03951	-1.97091	1
Dapk2	9.772952	7.73463	8.29195	8.01329	-2.03832	-1.481	1
Sst	15.82936	13.79164	14.23094	14.01129	-2.03771	-1.59842	1
Dnm3	8.054508	6.017118	6.04874	6.032929	-2.03739	-2.00577	2
	13.35827	11.32597	11.9549	11.64043	-2.0323	-1.40338	1
Kir3dl2	7.538648	5.506985	5.330493	5.418739	-2.03166	-2.20816	2
D830044I1	11.54809	9.516664	10.33571	9.926187	-2.03143	-1.21238	1
Pvalb	13.01213	10.98218	11.75069	11.36644	-2.02994	-1.26144	1

Siglech	10.0124	7.982503	8.602195	8.292349	-2.0299	-1.41021	1
Dopey1	13.78097	11.75217	11.99835	11.87526	-2.0288	-1.78262	1
	5.341512	3.312992	3.871819	3.592406	-2.02852	-1.46969	1
Gabrd	13.15938	11.13107	10.75402	10.94255	-2.02831	-2.40536	2
1700048F0	8.481886	6.454006	7.610643	7.032325	-2.02788	-0.87124	1
Pkhd1	12.28318	10.25698	10.96406	10.61052	-2.02619	-1.31911	1
	9.917333	7.892242	8.603037	8.247639	-2.02509	-1.3143	1
Sprr1b	6.752655	4.728082	4.096871	4.412476	-2.02457	-2.65578	2
Ccl25	5.721138	3.697897	4.239161	3.968529	-2.02324	-1.48198	1
	7.760212	5.737643	5.873461	5.805552	-2.02257	-1.88675	1
Akr1c18	11.07659	9.054629	10.60387	9.82925	-2.02196	-0.47272	1
Btg2	13.35302	11.33181	11.68574	11.50878	-2.02121	-1.66728	1
9230102K2	5.604993	3.585049	4.712934	4.148992	-2.01994	-0.89206	1
LOC433198	5.3574	3.33957	5.568618	4.454094	-2.01783	0.211219	1
Cckbr	13.12364	11.10818	11.37558	11.24188	-2.01546	-1.74806	1
Sass6	11.372	9.358521	10.13126	9.744889	-2.01348	-1.24075	1
4921513108	5.955634	3.942409	4.602397	4.272403	-2.01322	-1.35324	1
D11Ertd71	9.930162	7.917358	8.788272	8.352815	-2.0128	-1.14189	1
Frem2	13.11946	11.10741	11.85761	11.48251	-2.01205	-1.26185	1
Vipr1	11.40002	9.389543	10.05656	9.723052	-2.01047	-1.34346	1
Klhl14	8.329209	6.319806	6.650797	6.485301	-2.0094	-1.67841	1
Pttg1	6.707814	4.699625	5.213195	4.95641	-2.00819	-1.49462	1
Aoc3	12.19729	10.18963	9.819067	10.00435	-2.00766	-2.37822	2
Acap1	9.074317	7.067804	7.335014	7.201409	-2.00651	-1.7393	1
Hspb9	10.58127	8.575444	9.2514	8.913422	-2.00583	-1.32987	1
Kcnh4	12.46858	10.46538	10.34347	10.40442	-2.00321	-2.12512	2
Sox30	6.254779	4.251712	4.653242	4.452477	-2.00307	-1.60154	1
4930423D2	10.82501	8.824597	9.380896	9.102747	-2.00041	-1.44411	1
Il1rapl2	8.536713	6.539086	6.356819	6.447953	-1.99763	-2.17989	1
Cacna2d1	8.025836	6.049717	4.612186	5.330951	-1.97612	-3.41365	1
Frzb	11.58943	9.623245	9.547451	9.585348	-1.96618	-2.04197	1
A130072N6	11.03912	9.081973	8.981923	9.031948	-1.95714	-2.05719	1
Colq	6.595164	4.638678	3.858942	4.24881	-1.95649	-2.73622	1
Nova1	6.850838	4.919599	4.316634	4.618116	-1.93124	-2.5342	1
Nrgn	15.51104	13.59573	13.05658	13.32615	-1.91532	-2.45446	1
Gm2560	7.296133	5.383666	4.533072	4.958369	-1.91247	-2.76306	1
Cabp1	10.44451	8.532109	8.032432	8.282271	-1.9124	-2.41208	1
Slc24a2	6.564206	4.654325	3.688638	4.171481	-1.90988	-2.87557	1
Kif21a	10.78082	8.873343	8.646565	8.759954	-1.90748	-2.13426	1
D4Ertd3356	6.281281	4.376775	3.612371	3.994573	-1.90451	-2.66891	1
Olfr1143	13.07722	11.17442	10.98187	11.07815	-1.9028	-2.09535	1
Atp2b2	9.85329	7.951685	6.889387	7.420536	-1.90161	-2.9639	1
Pp2d1	8.332178	6.442744	6.140342	6.291543	-1.88943	-2.19184	1
Cdyl	7.678346	5.809764	4.435395	5.12258	-1.86858	-3.24295	1
	6.676331	4.810656	4.353053	4.581854	-1.86568	-2.32328	1
Gm4981	6.842811	4.979061	4.538978	4.759019	-1.86375	-2.30383	1
Cst11	8.660915	6.799141	6.51747	6.658305	-1.86177	-2.14344	1

Ep300	7.495159	5.639788	5.240387	5.440088	-1.85537	-2.25477	1
Nhlrc3	9.004926	7.152089	6.941476	7.046782	-1.85284	-2.06345	1
Arap2	7.227336	5.376986	5.119173	5.248079	-1.85035	-2.10816	1
A830009L0	6.758499	4.910769	4.66663	4.788699	-1.84773	-2.09187	1
Pbrm1	8.197292	6.35203	5.697458	6.024744	-1.84526	-2.49983	1
	9.228436	7.384789	6.958089	7.171439	-1.84365	-2.27035	1
Basp1	8.156972	6.31924	5.541096	5.930168	-1.83773	-2.61588	1
Pdha2	7.192563	5.35814	4.794992	5.076566	-1.83442	-2.39757	1
Robo3	11.42125	9.607917	9.119372	9.363645	-1.81333	-2.30188	1
LOC101056	6.165268	4.356587	4.123411	4.239999	-1.80868	-2.04186	1
Trp53tg5	14.08102	12.2853	11.98445	12.13488	-1.79572	-2.09657	1
Mgst3	11.02703	9.232582	8.532461	8.882522	-1.79444	-2.49457	1
	8.350482	6.566587	6.142954	6.35477	-1.7839	-2.20753	1
Myo7b	6.130582	4.363975	2.322894	3.343435	-1.76661	-3.80769	1
Pde4d	7.901144	6.137563	5.505559	5.821561	-1.76358	-2.39559	1
Chm	7.248067	5.484837	4.833594	5.159216	-1.76323	-2.41447	1
Ksr2	6.478641	4.721054	2.769909	3.745482	-1.75759	-3.70873	1
Fam105a	8.493255	6.740844	6.142378	6.441611	-1.75241	-2.35088	1
4632434I1	6.70748	4.958161	2.91645	3.937306	-1.74932	-3.79103	1
Stx1a	9.84802	8.111461	7.628189	7.869825	-1.73656	-2.21983	1
Cwc25	7.058556	5.344831	4.872551	5.108691	-1.71372	-2.186	1
Opcml	8.641493	6.935404	6.205536	6.57047	-1.70609	-2.43596	1
	11.03415	9.332666	8.968399	9.150533	-1.70148	-2.06575	1
2210017I0	14.16001	12.47412	12.12182	12.29797	-1.6859	-2.0382	1
Zfp445	6.196633	4.526678	3.409098	3.967888	-1.66996	-2.78753	1
Cacna1a	13.89898	12.23131	11.83494	12.03313	-1.66767	-2.06404	1
Ntrk2	10.9874	9.321898	8.846874	9.084386	-1.6655	-2.14053	1
Obox3	6.424304	4.785599	3.654666	4.220132	-1.6387	-2.76964	1
Insig1	7.348276	5.711538	5.070924	5.391231	-1.63674	-2.27735	1
Kalrn	9.565182	7.937122	7.45817	7.697646	-1.62806	-2.10701	1
2410125D1	8.528195	6.916906	6.402666	6.659786	-1.61129	-2.12553	1
Rictor	7.760404	6.160039	5.488034	5.824037	-1.60036	-2.27237	1
9030425P0	7.440713	5.845413	5.228166	5.53679	-1.5953	-2.21255	1
Sgcz	8.276832	6.684398	6.230773	6.457586	-1.59243	-2.04606	1
Mical2	8.366575	6.789247	6.137051	6.463149	-1.57733	-2.22952	1
Mgst3	11.25077	9.680146	9.099684	9.389915	-1.57063	-2.15109	1
	6.533822	4.969089	4.216641	4.592865	-1.56473	-2.31718	1
Adam33	7.39225	5.831996	5.07413	5.453063	-1.56025	-2.31812	1
	7.528619	5.970948	4.842111	5.40653	-1.55767	-2.68651	1
Scara5	6.194178	4.650902	2.527405	3.589154	-1.54328	-3.66677	1
Ccne1	6.360496	4.823296	4.356587	4.589942	-1.5372	-2.00391	1
Crebzf	9.413351	7.877189	7.262423	7.569806	-1.53616	-2.15093	1
Slc12a1	6.456368	4.927225	2.322894	3.62506	-1.52914	-4.13347	1
Fxyd7	10.03426	8.522484	7.973032	8.247758	-1.51177	-2.06123	1
Rnf148	8.294918	6.784554	6.133079	6.458816	-1.51036	-2.16184	1
1110013I0	8.31847	6.810849	6.031292	6.421071	-1.50762	-2.28718	1
Ppp2r2b	8.253547	6.747068	6.104912	6.42599	-1.50648	-2.14863	1

Rassf3	8.229416	6.728467	5.711163	6.219815	-1.50095	-2.51825	1
Adcy1	13.50587	12.01859	11.24641	11.6325	-1.48728	-2.25946	1
Ntm	9.269151	7.785493	7.042691	7.414092	-1.48366	-2.22646	1
Tmem198	10.86983	9.400668	8.754597	9.077633	-1.46916	-2.11523	1
Rpe65	9.348624	7.891628	6.851212	7.37142	-1.457	-2.49741	1
Scn1a	8.934686	7.495983	6.493547	6.994765	-1.4387	-2.44114	1
E130012A1	13.84128	12.40619	11.65262	12.02941	-1.43509	-2.18866	1
Rcor3	7.202372	5.783456	4.886365	5.334911	-1.41892	-2.31601	1
Crhr1	11.58614	10.17874	9.449184	9.813964	-1.40739	-2.13695	1
Kcnk12	7.816809	6.428896	5.00132	5.715108	-1.38791	-2.81549	1
Dusp8	11.79121	10.41338	9.667384	10.04038	-1.37784	-2.12383	1
	6.557557	5.18954	4.282539	4.73604	-1.36802	-2.27502	1
Smarcd1	7.135967	5.793285	4.491725	5.142505	-1.34268	-2.64424	1
Crhr1	5.878898	4.561319	3.725307	4.143313	-1.31758	-2.15359	1
	5.447325	4.136576	3.150373	3.643474	-1.31075	-2.29695	1
Rims2	9.608623	8.312002	7.526572	7.919287	-1.29662	-2.08205	1
Gm129	11.50885	10.2135	8.913364	9.56343	-1.29535	-2.59549	1
Olfm1	11.91683	10.6331	9.901703	10.2674	-1.28373	-2.01513	1
Cuedc1	6.997539	5.71424	4.632644	5.173442	-1.2833	-2.36489	1
	5.831688	4.55057	3.312593	3.931581	-1.28112	-2.51909	1
Foxp1	9.498875	8.2282	7.425903	7.827052	-1.27068	-2.07297	1
Trim43c	7.18519	5.914763	2.322894	4.118829	-1.27043	-4.8623	1
	6.468071	5.200807	2.322894	3.76185	-1.26726	-4.14518	1
Rnpc3	8.585537	7.330711	6.541142	6.935926	-1.25483	-2.0444	1
Gm4598	6.387701	5.147077	3.943976	4.545527	-1.24062	-2.44373	1
Cd6	11.49764	10.2824	9.404034	9.843215	-1.21524	-2.09361	1
	5.983158	4.769371	3.471741	4.120556	-1.21379	-2.51142	1
Cbx3	7.122995	5.91077	4.909854	5.410312	-1.21223	-2.21314	1
B3gat3	7.128652	5.927681	4.825512	5.376596	-1.20097	-2.30314	1
Twistnb	7.670349	6.47299	5.552964	6.012977	-1.19736	-2.11738	1
Mup1	6.074969	4.8857	3.867541	4.376621	-1.18927	-2.20743	1
Col23a1	8.348094	7.218767	5.632809	6.425788	-1.12933	-2.71529	1
Ankrd33b	9.198228	8.078883	6.908828	7.493856	-1.11935	-2.2894	1
D1Ert448i	5.964357	4.85002	3.590483	4.220252	-1.11434	-2.37387	1
Catsperd	6.017474	4.903382	3.986477	4.44493	-1.11409	-2.031	1
Gm1971	5.625711	4.599282	3.144503	3.871892	-1.02643	-2.48121	1
Atxn7l2	6.305722	5.2845	3.481916	4.383208	-1.02122	-2.82381	1
Meg3	11.69219	10.68761	9.223824	9.955719	-1.00458	-2.46837	1
Nanog	5.776053	4.811573	3.412651	4.112112	-0.96448	-2.3634	1
Slc22a20	5.393691	4.468586	2.322894	3.39574	-0.9251	-3.0708	1
90306220i	6.282806	5.369349	3.671123	4.520236	-0.91346	-2.61168	1
Spop	7.280074	6.378501	4.885814	5.632157	-0.90157	-2.39426	1
LOC101056	5.50395	4.622984	2.322894	3.472939	-0.88097	-3.18106	1
Bglap	5.583721	4.703643	2.766884	3.735264	-0.88008	-2.81684	1
	6.031768	5.153827	3.652835	4.403331	-0.87794	-2.37893	1
BC030499	10.32114	9.450209	8.213569	8.831889	-0.87093	-2.10757	1
	6.269209	5.406588	2.783446	4.095017	-0.86262	-3.48576	1



Gm12302	5.106425	4.272895	2.322894	3.297895	-0.83353	-2.78353	1
Abca5	5.469111	4.662102	3.352268	4.007185	-0.80701	-2.11684	1
Aqp12	5.076032	4.269492	2.846571	3.558032	-0.80654	-2.22946	1
Zdhhc19	5.792178	4.993686	3.644783	4.319234	-0.79849	-2.14739	1
Heph	5.160955	4.367038	2.545204	3.456121	-0.79392	-2.61575	1
Igfbp1	7.445373	6.669903	5.151031	5.910467	-0.77547	-2.29434	1
Gpx6	6.05186	5.276728	2.322894	3.799811	-0.77513	-3.72897	1
Krtap11-1	6.194544	5.429953	3.98326	4.706606	-0.76459	-2.21128	1
Col4a4	7.790871	7.055328	3.718597	5.386963	-0.73554	-4.07227	1
Gm6600	6.443908	5.744516	3.890691	4.817604	-0.69939	-2.55322	1
Hnrnp1	7.697831	7.026937	5.670252	6.348594	-0.67089	-2.02758	1
Neurog2	5.904776	5.26156	3.696173	4.478866	-0.64322	-2.2086	1
	5.096318	4.455047	2.710094	3.58257	-0.64127	-2.38622	1
Kcnma1	7.61679	6.994232	5.25165	6.122941	-0.62256	-2.36514	1
LOC553085	4.78964	4.168923	2.757051	3.462987	-0.62072	-2.03259	1
4932438A1	5.450316	4.866117	2.561623	3.71387	-0.5842	-2.88869	1
	6.923874	6.363218	3.258648	4.810933	-0.56066	-3.66523	1
Zkscan3	7.949201	7.397222	5.935575	6.666398	-0.55198	-2.01363	1
Gm15466	8.199886	7.670888	5.711065	6.690977	-0.529	-2.48882	1
Rapgef4	6.231685	5.7042	3.581204	4.642702	-0.52748	-2.65048	1
Aspdh	6.740776	6.24787	4.578297	5.413083	-0.49291	-2.16248	1
	5.419506	4.961465	2.882438	3.921952	-0.45804	-2.53707	1
Kirrel2	7.383603	6.928134	5.231627	6.07988	-0.45547	-2.15198	1
Rgs9bp	5.005344	4.574687	2.322894	3.448791	-0.43066	-2.68245	1
Obp2a	4.75726	4.360724	2.322894	3.341809	-0.39654	-2.43437	1
Trpv3	7.152792	6.795316	4.111019	5.453167	-0.35748	-3.04177	1
Ptma	8.996029	8.688296	6.89267	7.790483	-0.30773	-2.10336	1
6330408AC	4.80196	4.539513	2.478663	3.509088	-0.26245	-2.3233	1
5730419F0	7.08025	6.828079	4.487493	5.657786	-0.25217	-2.59276	1
LOC100503	5.652055	5.415199	2.66871	4.041955	-0.23686	-2.98335	1
Tbc1d16	5.667606	5.467499	3.552563	4.510031	-0.20011	-2.11504	1
Gm3317	4.954837	4.770466	2.896704	3.833585	-0.18437	-2.05813	1
Olf1404	7.834763	7.66332	4.401897	6.032609	-0.17144	-3.43287	1
	4.932948	4.78362	2.552306	3.667963	-0.14933	-2.38064	1
Cat	6.925662	6.778178	4.513568	5.645873	-0.14748	-2.41209	1
	7.115001	6.97362	5.075544	6.024582	-0.14138	-2.03946	1
Trp53bp1	4.852652	4.712767	2.386772	3.54977	-0.13989	-2.46588	1
	6.744085	6.63823	4.407637	5.522934	-0.10586	-2.33645	1
Gm4791	6.866602	6.768304	2.586832	4.677568	-0.0983	-4.27977	1
	5.737314	5.650212	3.384471	4.517342	-0.0871	-2.35284	1
2210404OC	6.376967	6.506956	4.311352	5.409154	0.129989	-2.06562	1
Dnmbp	4.806461	4.980183	2.623474	3.801829	0.173722	-2.18299	1
4930554PC	5.359929	5.635576	2.696301	4.165938	0.275647	-2.66363	1
Zfp866	6.437954	6.798296	3.684063	5.241179	0.360342	-2.75389	1
Hnf4a	7.57636	8.039906	5.2002	6.620053	0.463546	-2.37616	1
Gm6249	6.272333	6.784333	2.322894	4.553614	0.512	-3.94944	1
Gm7173	4.718621	5.247335	2.322894	3.785114	0.528714	-2.39573	1

Olf593	5.249986	5.82361	2.322894	4.073252	0.573624	-2.92709	1
Zscan4c	5.293754	5.894012	2.322894	4.108453	0.600258	-2.97086	1
Prss22	6.770372	7.482451	4.73783	6.110141	0.712079	-2.03254	1
Capza3	8.041021	8.770999	2.322894	5.546947	0.729978	-5.71813	1
Enpp6	6.666585	7.435849	2.322894	4.879372	0.769263	-4.34369	1
Slc39a11	4.913154	5.748332	2.749341	4.248836	0.835178	-2.16381	1
Gas7	6.975833	7.91091	4.855948	6.383429	0.935077	-2.11989	1
Tmprss11a	5.436269	6.42947	3.180205	4.804837	0.9932	-2.25606	1
Olf1156	5.712269	6.939837	2.942858	4.941347	1.227568	-2.76941	1
	5.810777	7.466453	3.107235	5.286844	1.655676	-2.70354	1
	5.262799	8.386634	2.322894	5.354764	3.123835	-2.9399	1

GeneSymbol	Health	TBI	NSC	TBI-NSC	TBI-Health	NSC-Health	flag2
Wee2	4.989603	2.337589	7.993508	5.165548	-2.65201	3.003905	1
Vmn1r77	4.638678	2.744582	7.010753	4.877667	-1.8941	2.372075	1
Slc5a7	7.349813	5.601529	9.648039	7.624784	-1.74828	2.298226	1
Olf1r730	7.119462	5.634644	9.265274	7.449959	-1.48482	2.145812	1
Fmr1	5.875811	4.724589	8.06599	6.39529	-1.15122	2.190179	1
Tph1	6.355723	5.395494	8.385705	6.890599	-0.96023	2.029982	1
8430431K1	5.180718	4.251336	7.809025	6.03018	-0.92938	2.628308	1
1700063HC	6.935981	6.166075	9.471724	7.8189	-0.76991	2.535743	1
Adamts14	5.321905	4.6154	7.476234	6.045817	-0.7065	2.154329	1
A230092J1	4.946532	4.251849	7.084644	5.668247	-0.69468	2.138112	1
Fga	5.158009	4.560694	8.101236	6.330965	-0.59731	2.943227	1
	5.613377	5.020046	7.617853	6.318949	-0.59333	2.004476	1
	4.888071	4.346704	8.333946	6.340325	-0.54137	3.445875	1
Ntm	6.017818	5.482298	8.546483	7.014391	-0.53552	2.528665	1
Tmem40	9.557745	9.071536	11.60093	10.33623	-0.48621	2.043186	1
Ttbk1	4.696848	4.224481	7.751941	5.988211	-0.47237	3.055093	1
Efcab5	7.404093	6.947453	9.482139	8.214796	-0.45664	2.078046	1
	5.046885	4.609316	8.162548	6.385932	-0.43757	3.115663	1
Gm5741	8.049566	7.617288	11.61843	9.61786	-0.43228	3.568866	1
Rtdr1	6.253794	5.857348	8.811265	7.334306	-0.39645	2.557471	1
Bend7	4.943798	4.582871	8.063391	6.323131	-0.36093	3.119593	1
Gm7167	4.379665	4.064026	6.957411	5.510719	-0.31564	2.577746	1
Clec12b	4.519917	4.273168	6.88128	5.577224	-0.24675	2.361363	1
Npw	9.130176	8.897781	12.94908	10.92343	-0.2324	3.818904	1
Snx22	7.683282	7.460032	9.782853	8.621442	-0.22325	2.099571	1
4930517G1	5.696272	5.507232	8.368584	6.937908	-0.18904	2.672312	1
Gng8	7.657348	7.49505	10.6008	9.047927	-0.1623	2.943456	1
Vmn1r203	5.133408	5.019461	7.472183	6.245822	-0.11395	2.338775	1
	4.239739	4.128264	6.29744	5.212852	-0.11148	2.057701	1
	4.748037	4.644625	6.801058	5.722842	-0.10341	2.053021	1
Spef2	4.36258	4.297427	6.573321	5.435374	-0.06515	2.210741	1
Isg20I2	5.047808	4.991232	7.984666	6.487949	-0.05658	2.936858	1
4921530L2	4.564216	4.515369	6.771998	5.643683	-0.04885	2.207782	1
Olf1r507	5.024159	4.992142	7.240446	6.116294	-0.03202	2.216287	1
	4.95017	4.971515	7.179093	6.075304	0.021345	2.228923	1
Mb	4.97801	5.025669	7.932034	6.478851	0.047659	2.954024	1
Barx2	4.522869	4.578832	6.697448	5.63814	0.055963	2.17458	1
Sult2a2	4.173271	4.2634	6.835531	5.549465	0.090129	2.66226	1
Atoh8	5.268442	5.360587	7.334387	6.347487	0.092145	2.065945	1
Gm5800	4.671174	4.768777	7.149283	5.95903	0.097603	2.478109	1
B230319CC	4.91442	5.012667	7.158288	6.085477	0.098247	2.243868	1
Olf1r617	4.36575	4.485549	7.426658	5.956104	0.119799	3.060908	1
2610100L1	4.226822	4.364807	6.89765	5.631229	0.137985	2.670828	1
Sdr9c7	4.800842	4.95254	7.670967	6.311754	0.151698	2.870125	1
Fam219b	5.566204	5.756568	8.564154	7.160361	0.190364	2.99795	1
Nuggc	4.95045	5.170924	8.012261	6.591593	0.220475	3.061812	1

	4.205062	4.485989	6.765727	5.625858	0.280926	2.560664	1
Six1	5.23043	5.579673	8.204453	6.892063	0.349243	2.974023	1
Chrn4	6.774795	7.137191	9.38371	8.260451	0.362396	2.608915	1
Map2k5	4.6081	4.973445	7.992105	6.482775	0.365346	3.384006	1
Rpl39l	6.917575	7.298232	9.449773	8.374003	0.380657	2.532198	1
Krt6b	5.259022	5.641499	7.731363	6.686431	0.382477	2.472341	1
170004201	4.374446	4.771464	6.643472	5.707468	0.397018	2.269025	1
	5.184897	5.584979	7.473408	6.529193	0.400081	2.288511	1
B3galt4	5.356055	5.758937	8.512798	7.135868	0.402882	3.156743	1
Neurl4	4.239161	4.658796	7.526081	6.092439	0.419636	3.286921	1
Krt5	4.694847	5.122133	7.426552	6.274343	0.427287	2.731706	1
Scp2d1	4.155315	4.595937	6.181157	5.388547	0.440622	2.025842	1
Olfr137	5.52752	5.977367	7.656458	6.816913	0.449847	2.128938	1
Txk	5.780021	6.236667	7.824792	7.03073	0.456646	2.044771	1
6720401G1	5.894131	6.350777	8.07547	7.213123	0.456646	2.181339	1
Pde11a	6.75066	7.252178	9.407584	8.329881	0.501518	2.656924	1
Olfr166	3.983791	4.499703	7.734114	6.116908	0.515912	3.750323	1
Zic4	7.437932	7.956277	9.440821	8.698549	0.518346	2.00289	1
Tyrp1	5.513379	6.037118	9.227241	7.63218	0.523739	3.713862	1
Crct1	4.710836	5.236781	7.469817	6.353299	0.525944	2.758981	1
2810021J2	4.968535	5.496327	7.612462	6.554395	0.527793	2.643927	1
Kctd12	12.8838	13.41589	17.36792	15.39191	0.532097	4.484127	1
Orm2	4.323937	4.860908	7.471273	6.16609	0.536971	3.147336	1
Rgs13	5.51523	6.053251	8.770098	7.411675	0.538022	3.254868	1
Fam19a3	4.974893	5.514117	7.228958	6.371538	0.539224	2.254065	1
Prph2	5.894012	6.434207	8.041021	7.237614	0.540195	2.147009	1
	4.061519	4.656551	6.221063	5.438807	0.595032	2.159544	1
Drd4	7.554462	8.154881	9.792169	8.973525	0.60042	2.237708	1
	4.523149	5.124214	6.731673	5.927944	0.601065	2.208524	1
Defa3	5.371313	5.984293	7.519255	6.751774	0.61298	2.147942	1
Ccdc153	7.904485	8.535133	10.31273	9.423932	0.630648	2.408245	1
Klra1	4.281607	4.944392	7.642442	6.293417	0.662785	3.360835	1
Tmem212	7.902229	8.566382	10.42853	9.497455	0.664153	2.526298	1
Cdhr3	6.423654	7.099679	8.627046	7.863363	0.676025	2.203392	1
Thbs4	10.8104	11.48675	13.2748	12.38078	0.676348	2.464405	1
Ube2h	5.469766	6.146348	7.662561	6.904455	0.676582	2.192796	1
Lrrc15	4.21074	4.913009	6.744592	5.828801	0.702269	2.533852	1
Ankrd33	3.747081	4.456444	6.483756	5.4701	0.709363	2.736675	1
Defa-rs12	6.350041	7.090436	8.891364	7.9909	0.740395	2.541323	1
F2	5.899198	6.644689	7.909539	7.277114	0.745491	2.010341	1
	4.650902	5.399401	6.80617	6.102786	0.748499	2.155268	1
	5.710583	6.478641	7.940613	7.209627	0.768058	2.23003	1
Cnga3	4.735819	5.50401	6.984974	6.244492	0.768191	2.249155	1
Tnn	5.877082	6.650192	9.156961	7.903576	0.77311	3.279879	1
Mogat1	6.0551	6.844227	9.082854	7.963541	0.789127	3.027754	1
Gm7849	6.715045	7.507487	9.855433	8.68146	0.792442	3.140388	1
Slc18a2	3.364226	4.200416	5.810122	5.005269	0.83619	2.445896	1

160002911	6.26693	7.107382	8.472126	7.789754	0.840452	2.205196	1
Ms4a10	3.910913	4.759715	5.940317	5.350016	0.848801	2.029404	1
Krt15	3.924768	4.824176	6.14417	5.484173	0.899408	2.219402	1
Gm9948	5.671224	6.589402	8.322472	7.455937	0.918178	2.651248	1
Cryba2	5.659308	6.620216	7.847487	7.233852	0.960909	2.18818	1
Lpar3	4.522245	5.486322	6.58394	6.035131	0.964077	2.061695	1
Cnpy4	3.627126	4.624692	6.154689	5.389691	0.997566	2.527563	1
	3.228838	4.228038	7.244004	5.736021	0.9992	4.015166	1
Lce1a1	4.08128	5.093551	6.758163	5.925857	1.012271	2.676883	1
Erc1	5.701593	6.724902	8.475844	7.600373	1.023309	2.774251	1
	4.849129	5.889039	8.018199	6.953619	1.03991	3.16907	1
Igf1	8.396029	9.448273	11.11774	10.283	1.052244	2.721707	1
Igf1	9.109586	10.1914	11.87477	11.03308	1.08181	2.765185	1
Gm5868	5.275405	6.361851	7.278272	6.820061	1.086445	2.002867	1
1700001K2	4.873082	5.964357	7.037515	6.500936	1.091275	2.164433	1
Stk32b	4.007206	5.106211	6.944649	6.02543	1.099005	2.937443	1
	3.942985	5.062364	6.024574	5.543469	1.119379	2.08159	1
Layn	5.16881	6.290325	7.470023	6.880174	1.121515	2.301213	1
	4.071075	5.219449	6.288982	5.754216	1.148374	2.217907	1
Mnd1	8.876011	10.03154	10.89668	10.46411	1.155525	2.020667	1
Plxna4os1	3.883671	5.049049	5.973482	5.511266	1.165379	2.089811	1
Ush1c	5.511762	6.677752	7.572891	7.125321	1.16599	2.061129	1
	3.533234	4.706293	6.260247	5.48327	1.173059	2.727013	1
Tspan18	9.505998	10.6794	11.74163	11.21051	1.173399	2.235628	1
Tmprss3	4.033859	5.215118	6.625311	5.920215	1.181259	2.591452	1
1110014L1	5.634181	6.819274	8.008925	7.414099	1.185094	2.374744	1
Fbp1	7.560125	8.749336	9.767064	9.2582	1.189211	2.206939	1
Defa-rs10	7.088018	8.284296	10.00215	9.143223	1.196278	2.914131	1
Gm609	3.29064	4.487493	6.716941	5.602217	1.196853	3.426301	1
Gm9876	5.674959	6.891197	7.965582	7.42839	1.216238	2.290624	1
Gm5113	5.370485	6.591522	7.489531	7.040527	1.221037	2.119046	1
Hemt1	4.500703	5.724087	7.457682	6.590884	1.223384	2.956979	1
Lhx3	5.784448	7.020634	8.157991	7.589313	1.236186	2.373543	1
Slc36a2	6.421367	7.664	9.316763	8.490382	1.242633	2.895396	1
Mmp2	4.351392	5.604674	6.452025	6.028349	1.253282	2.100632	1
	3.890691	5.159382	6.436394	5.797888	1.268691	2.545703	1
Mgarp	5.392144	6.670971	8.03369	7.35233	1.278827	2.641546	1
Il16	7.662561	8.9443	9.881109	9.412705	1.281739	2.218548	1
Slc25a37	3.426164	4.709622	6.710311	5.709966	1.283459	3.284147	1
Chrna3	4.684552	5.970024	8.659266	7.314645	1.285472	3.974714	1
	5.389931	6.687345	7.726741	7.207043	1.297414	2.336811	1
Exoc3l4	7.036764	8.371417	9.236292	8.803855	1.334653	2.199528	1
Nanog	4.451314	5.803803	6.899064	6.351434	1.352489	2.44775	1
Aqp4	12.05572	13.40837	14.23951	13.82394	1.352653	2.183796	1
Casr	3.534901	4.893264	5.905627	5.399446	1.358363	2.370726	1
Slc3a1	2.851579	4.211523	5.738313	4.974918	1.359944	2.886733	1
Atf7	5.284433	6.661398	8.601088	7.631243	1.376965	3.316655	1

Irx1	7.387182	8.782259	9.991997	9.387128	1.395077	2.604815	1
Fam81b	3.949642	5.348196	6.287101	5.817649	1.398554	2.337459	1
	4.627877	6.029659	7.180803	6.605231	1.401782	2.552926	1
Grpel2	4.361189	5.76389	6.966557	6.365224	1.402701	2.605368	1
Kcne1l	9.736063	11.14347	12.24675	11.69511	1.407411	2.510687	1
Defa-rs2	2.864632	4.293413	6.26584	5.279626	1.428781	3.401208	1
H2-M11	4.335971	5.765391	6.391591	6.078491	1.42942	2.05562	1
Gm14625	7.861848	9.29316	9.90392	9.59854	1.431311	2.042072	1
	4.161147	5.601357	8.052122	6.82674	1.44021	3.890975	1
1700001CC	5.76389	7.204252	7.815273	7.509763	1.440362	2.051383	1
Olfr675	3.264539	4.718211	5.277268	4.99774	1.453672	2.01273	1
3830403N1	4.472429	5.926418	6.777488	6.351953	1.453989	2.305059	1
Popdc3	3.821835	5.280322	5.921703	5.601012	1.458487	2.099868	1
Atp6v0d2	3.449479	4.909854	5.92903	5.419442	1.460376	2.479551	1
Wdr63	6.14989	7.613157	8.957604	8.285381	1.463268	2.807715	1
Irx5	3.090148	4.554461	5.640456	5.097458	1.464313	2.550308	1
Prom2	3.2274	4.70616	5.610877	5.158518	1.47876	2.383477	1
Olfr320	3.613853	5.098988	5.997082	5.548035	1.485135	2.38323	1
Sct	5.798085	7.293712	9.586068	8.43989	1.495627	3.787983	1
Fam169b	5.809764	7.306354	8.814218	8.060286	1.49659	3.004454	1
Unc93a	4.682789	6.192837	7.09071	6.641774	1.510048	2.407921	1
Lrrc34	4.890704	6.411207	7.342115	6.876661	1.520503	2.451411	1
Stc2	3.227124	4.75671	6.923874	5.840292	1.529586	3.696751	1
Zfp462	3.552141	5.086485	7.540038	6.313261	1.534345	3.987897	1
Eppin	3.505359	5.050471	6.331957	5.691214	1.545112	2.826598	1
Pygl	7.931652	9.478419	10.1137	9.796059	1.546767	2.182047	1
Mlph	6.228748	7.782419	8.336395	8.059407	1.553671	2.107647	1
Yipf6	4.471272	6.035338	6.651392	6.343365	1.564066	2.18012	1
E030010NC	4.99738	6.569447	7.358578	6.964013	1.572067	2.361198	1
Isoc2b	5.727184	7.31575	8.121389	7.718569	1.588566	2.394205	1
Slitrk6	4.705534	6.295171	7.388661	6.841916	1.589637	2.683127	1
Efhb	4.962545	6.553804	7.115689	6.834747	1.591259	2.153144	1
Wnt9b	4.995013	6.58751	7.132289	6.859899	1.592497	2.137276	1
Zfp474	4.066498	5.666111	6.266293	5.966202	1.599613	2.199795	1
Shisa6	10.93437	12.54757	12.9394	12.74349	1.613198	2.005031	1
Otos	4.51264	6.126263	7.398033	6.762148	1.613624	2.885394	1
Abca1	11.8149	13.43115	14.02987	13.73051	1.61625	2.214963	1
Tug1	4.535912	6.167839	6.86906	6.518449	1.631927	2.333148	1
Tekt1	8.255639	9.913895	10.32857	10.12123	1.658256	2.072929	1
Pphln1	4.703529	6.362645	8.160186	7.261415	1.659116	3.456657	1
Adam5	3.164334	4.830475	5.370719	5.100597	1.666141	2.206385	1
BC100451	4.84865	6.517768	7.739465	7.128617	1.669118	2.890815	1
Cntf	8.878162	10.5634	10.99291	10.77816	1.685241	2.114747	1
Ncoa3	3.551123	5.243826	5.94584	5.594833	1.692704	2.394718	1
Abcc12	5.680413	7.380205	7.707277	7.543741	1.699792	2.026864	1
Col6a3	7.920448	9.622841	10.38062	10.00173	1.702393	2.46017	1
Gm9999	5.377574	7.084828	8.303982	7.694405	1.707254	2.926408	1

Gm6583	2.736777	4.451314	4.836891	4.644103	1.714538	2.100114	1
1700012BC	6.030972	7.750427	8.369517	8.059972	1.719455	2.338545	1
Slamf6	4.953043	6.678981	7.586899	7.13294	1.725938	2.633856	1
Fabp7	13.79919	15.53293	16.31449	15.92371	1.73374	2.515296	1
Xkr5	3.678413	5.423292	5.730259	5.576775	1.744879	2.051846	1
Gm9999	5.7854	7.532177	8.716869	8.124523	1.746777	2.931469	1
Olfr129	2.338026	4.092355	7.542317	5.817336	1.75433	5.204292	1
Gm2030	7.61128	9.370581	9.624619	9.4976	1.759302	2.01334	1
Klk7	2.321946	4.09547	4.482945	4.289207	1.773523	2.160998	1
Gal	9.49634	11.27256	12.31742	11.79499	1.776217	2.821079	1
Spef2	6.660232	8.440767	9.008365	8.724566	1.780535	2.348133	1
Mc2r	2.321946	4.106315	4.382009	4.244162	1.784369	2.060063	1
Xlr4a	4.597158	6.384482	6.94804	6.666261	1.787325	2.350882	1
Hvcn1	11.23469	13.03006	13.50033	13.26519	1.79537	2.265648	1
Ifi203	9.973924	11.77062	12.88464	12.32763	1.796698	2.910717	1
Padi4	2.321946	4.12026	5.447091	4.783675	1.798314	3.125145	1
Lox	2.926674	4.727584	5.068178	4.897881	1.80091	2.141504	1
Fgfr4	5.309908	7.112151	8.093804	7.602978	1.802243	2.783896	1
Acot1	12.03135	13.83438	14.3629	14.09864	1.803038	2.331557	1
Cenpb	2.321946	4.125388	4.608816	4.367102	1.803442	2.28687	1
Slc6a19	3.039096	4.850306	5.88332	5.366813	1.811209	2.844224	1
	6.579721	8.395421	8.663505	8.529463	1.815701	2.083785	1
	5.963482	7.788476	8.131186	7.959831	1.824994	2.167704	1
Spib	4.791347	6.621879	7.409773	7.015826	1.830532	2.618426	1
Slc44a3	2.886442	4.729954	5.324302	5.027128	1.843512	2.43786	1
Olfr470	2.321946	4.169337	5.084404	4.626871	1.847391	2.762458	1
Igsf1	8.54567	10.39539	11.28919	10.84229	1.849724	2.743519	1
Arhgef7	2.321946	4.173112	4.625106	4.399109	1.851166	2.30316	1
Slx	7.347657	9.199438	9.419713	9.309576	1.851781	2.072056	1
D2Bwg088l	4.092628	5.945187	6.986622	6.465904	1.852559	2.893995	1
Isl2	3.359152	5.228818	7.750792	6.489805	1.869666	4.391639	1
Defa2	3.96018	5.838889	7.769236	6.804062	1.878709	3.809056	1
Arhgap11a	6.713855	8.596176	8.992705	8.794441	1.882321	2.27885	1
Lct	9.200446	11.08689	11.88545	11.48617	1.886445	2.685006	1
AF251705	10.56827	12.45877	12.95331	12.70604	1.890495	2.385038	1
Fam115c	2.321946	4.217312	4.791788	4.50455	1.895366	2.469842	1
C430049E0	3.956571	5.854636	6.499894	6.177265	1.898065	2.543323	1
	3.911588	5.810122	7.586537	6.698329	1.898533	3.674949	1
Aldh1l2	6.591585	8.492399	8.848221	8.67031	1.900814	2.256636	1
Ak9	2.321946	4.223495	4.942007	4.582751	1.901549	2.620061	1
	2.563447	4.467802	4.672826	4.570314	1.904355	2.109379	1
Timp2	9.352732	11.25721	11.44958	11.35339	1.904475	2.096847	1
Abhd15	5.366698	7.271276	7.498005	7.38464	1.904577	2.131307	1
Gm5532	5.065725	6.972545	7.758968	7.365756	1.906819	2.693243	1
4930444A1	2.502065	4.416513	5.339158	4.877835	1.914448	2.837092	1
Ern1	2.934839	4.852862	5.137224	4.995043	1.918024	2.202386	1
Sdcbp	3.084511	5.006836	5.169411	5.088124	1.922325	2.0849	1

Apoc1	9.914884	11.83879	13.8385	12.83865	1.923906	3.923617	1
BC002189	2.321946	4.257721	5.065828	4.661775	1.935775	2.743882	1
Prg4	9.426436	11.36611	11.60317	11.48464	1.939672	2.176733	1
Ly6g6e	7.047331	8.988481	10.36346	9.67597	1.94115	3.316127	1
H2-Q5	5.532968	7.475016	7.946148	7.710582	1.942048	2.413181	1
Syk	9.118348	11.06409	11.1344	11.09924	1.945739	2.016047	1
4930473AC	3.487815	5.434275	5.806652	5.620463	1.94646	2.318837	1
C330027CC	2.755529	4.7053	4.876847	4.791074	1.949771	2.121319	1
Xlr4b	5.509173	7.460362	7.698648	7.579505	1.951189	2.189474	1
Sytl3	2.321946	4.275218	6.091281	5.18325	1.953272	3.769335	1
Sp140	8.502828	10.46631	10.53483	10.50057	1.96348	2.031998	1
Stard5	7.148088	9.115392	9.177345	9.146369	1.967304	2.029257	1
Pdlim4	12.03853	14.00775	14.14837	14.07806	1.969212	2.109835	1
Ctsh	12.28877	14.25992	14.62555	14.44273	1.971146	2.336773	1
Nek5	5.09447	7.065826	7.629617	7.347721	1.971356	2.535147	1
Tctex1d4	5.056573	7.028875	7.603989	7.316432	1.972302	2.547416	1
Plscr4	2.796711	4.773157	4.925176	4.849166	1.976445	2.128465	1
Gcnt1	6.26461	8.243646	8.380602	8.312124	1.979036	2.115992	1
	2.509133	4.48939	6.512492	5.500941	1.980257	4.003358	1
Tfap2b	6.671398	8.652009	9.075574	8.863792	1.980611	2.404176	1
	2.321946	4.31013	7.213739	5.761935	1.988184	4.891793	1
Kif18a	7.00184	8.993337	9.178513	9.085925	1.991497	2.176673	1
Ifi203	6.432272	8.425278	8.771694	8.598486	1.993007	2.339423	1
Hk2	9.382324	11.37728	11.62966	11.50347	1.994952	2.247332	1
Trim47	10.46676	12.46726	11.7921	12.12968	2.000504	1.325349	1
Ccny	3.887204	5.888486	5.456046	5.672266	2.001282	1.568841	1
Arg2	4.630534	6.632904	5.928845	6.280875	2.00237	1.298311	1
Smarcd2	6.519554	8.523167	7.142792	7.83298	2.003613	0.623238	1
Slc38a9	2.617345	4.623472	4.721054	4.672263	2.006127	2.103709	2
Gm1966	2.321946	4.328137	6.265246	5.296692	2.006191	3.9433	2
Sash3	7.649609	9.656807	9.732529	9.694668	2.007198	2.08292	2
Gabrg3	4.598218	6.605841	4.550907	5.578374	2.007623	-0.04731	1
Dao	2.518221	4.525851	5.869021	5.197436	2.00763	3.3508	2
	3.498294	5.507897	5.976654	5.742276	2.009604	2.47836	2
	2.321946	4.332202	4.626864	4.479533	2.010256	2.304918	2
Ifitm2	9.156313	11.16738	9.992406	10.57989	2.011069	0.836093	1
Tpm4	12.56068	14.57332	13.97256	14.27294	2.012636	1.411873	1
Fas	9.050982	11.06489	10.46572	10.76531	2.013911	1.414738	1
Pilra	6.364838	8.378832	8.366183	8.372508	2.013994	2.001345	2
Angpt2	8.286618	10.30168	9.744507	10.0231	2.015065	1.457889	1
Hmgn1	8.58987	10.60624	9.853169	10.2297	2.016366	1.263299	1
Slc16a9	6.007817	8.024307	7.639761	7.832034	2.01649	1.631944	1
Frem3	2.84332	4.861451	6.563476	5.712463	2.018131	3.720156	2
AA060545	3.117645	5.135893	4.445108	4.790501	2.018249	1.327464	1
Gm694	8.559145	10.57945	8.972988	9.77622	2.020307	0.413843	1
Cdkn3	5.449521	7.470517	7.255725	7.363121	2.020996	1.806205	1
Mapk1	8.951641	10.97275	10.50298	10.73787	2.021113	1.551337	1



Mndal	9.0688	11.08996	10.62704	10.8585	2.021164	1.558238	1
Samhd1	7.244859	9.266643	8.345174	8.805909	2.021784	1.100315	1
	9.651623	11.6738	11.07388	11.37384	2.022179	1.422256	1
Coro1c	10.8115	12.83408	12.50785	12.67096	2.022572	1.696342	1
Nfam1	8.840572	10.86385	10.82172	10.84278	2.023274	1.98115	1
Cpne4	5.026846	7.050201	3.578843	5.314522	2.023355	-1.448	1
Fes	7.870246	9.893864	9.343983	9.618924	2.023618	1.473737	1
Fanca	7.88323	9.908941	9.180852	9.544897	2.025711	1.297622	1
473141910	2.321946	4.348971	4.745057	4.547014	2.027025	2.423111	2
Tes	8.523167	10.5503	10.32421	10.43725	2.027132	1.801039	1
	2.835643	4.863813	4.639445	4.751629	2.02817	1.803802	1
	6.210781	8.23897	7.169151	7.704061	2.028189	0.95837	1
	4.187272	6.215604	6.092654	6.154129	2.028332	1.905382	1
Naip6	6.908725	8.937114	9.067388	9.002251	2.028389	2.158663	2
Cysltr1	6.278115	8.307005	8.155024	8.231015	2.02889	1.876909	1
Matn2	9.680894	11.71083	11.5197	11.61526	2.029932	1.838803	1
Bms1	5.551006	7.581171	6.453411	7.017291	2.030165	0.902405	1
Igfbp2	12.07904	14.10944	13.10448	13.60696	2.030401	1.025446	1
Vpreb1	5.323072	7.356253	5.414117	6.385185	2.033181	0.091045	1
Ncapg	4.618376	6.651813	6.58049	6.616152	2.033437	1.962114	1
Hspb1	12.75942	14.79484	14.00882	14.40183	2.03542	1.249404	1
Tec	5.46278	7.498633	7.135967	7.3173	2.035853	1.673187	1
Ifi47	8.677661	10.7158	10.3206	10.5182	2.038137	1.64294	1
Odc1	8.130099	10.16833	9.041759	9.605045	2.038231	0.91166	1
Itgb2	8.637739	10.67811	10.54082	10.60947	2.040372	1.903084	1
AW551984	4.119049	6.159853	6.266193	6.213023	2.040804	2.147144	2
	7.866969	9.910265	9.209871	9.560068	2.043296	1.342902	1
Dhx58	8.989239	11.03349	10.5649	10.7992	2.044254	1.575661	1
Lox	5.091608	7.135967	8.099276	7.617622	2.044359	3.007668	2
Rrbp1	10.22424	12.26872	11.51328	11.891	2.044482	1.289036	1
Fes	10.22691	12.2727	12.00591	12.1393	2.045792	1.778995	1
Fam117a	4.193204	6.240464	5.221323	5.730893	2.04726	1.028119	1
Hcst	6.871121	8.919567	9.364829	9.142198	2.048447	2.493709	2
Ces2c	6.596196	8.644822	6.871862	7.758342	2.048626	0.275666	1
Col1a1	12.69044	14.74123	14.75915	14.75019	2.050786	2.068712	2
	5.185566	7.237082	4.348349	5.792715	2.051516	-0.83722	1
Dnali1	6.791984	8.843758	9.350287	9.097022	2.051774	2.558303	2
Fads2	4.908751	6.960826	5.267725	6.114275	2.052075	0.358974	1
Retnlg	4.502197	6.554934	7.11477	6.834852	2.052737	2.612573	2
Trp73	4.994054	7.04909	7.353238	7.201164	2.055036	2.359184	2
Rhoc	11.615	13.67194	13.23945	13.4557	2.056939	1.624456	1
	5.207025	7.265741	5.175583	6.220662	2.058716	-0.03144	1
Gm20558	4.486796	6.545672	5.768286	6.156979	2.058876	1.281489	1
Olfr1445	2.321946	4.380967	3.884299	4.132633	2.059021	1.562353	1
Mcm10	8.240785	10.30156	9.655646	9.978602	2.060772	1.414861	1
Ankle1	7.917837	9.981475	9.85458	9.918028	2.063638	1.936743	1
Egflam	3.075118	5.138929	4.445962	4.792445	2.063811	1.370844	1

Chaf1a	6.15842	8.222487	7.469106	7.845797	2.064067	1.310686	1
Gm4130	10.36197	12.42667	11.50637	11.96652	2.064696	1.144398	1
	2.321946	4.386711	5.451178	4.918945	2.064765	3.129232	2
Smad5	4.173112	6.238807	5.747981	5.993394	2.065695	1.574868	1
Cebpe	3.868652	5.934962	5.291595	5.613279	2.06631	1.422943	1
Pkn3	8.315232	10.38234	9.397624	9.889982	2.067108	1.082392	1
Siglec5	2.769909	4.83704	4.047535	4.442287	2.06713	1.277626	1
Mbtps2	4.877069	6.946149	6.353354	6.649751	2.069081	1.476285	1
Reep4	5.915536	7.984666	6.742464	7.363565	2.06913	0.826928	1
Wasf3	2.910671	4.980437	4.376282	4.67836	2.069766	1.465611	1
	8.976194	11.04647	10.17836	10.61241	2.070275	1.202162	1
Myd88	8.105883	10.17646	9.304246	9.740351	2.070572	1.198363	1
Ddx58	6.154689	8.226997	7.323312	7.775155	2.072308	1.168623	1
Aif1	12.08074	14.15336	14.51215	14.33275	2.072612	2.431403	2
Pole3	5.60549	7.678952	6.746419	7.212685	2.073462	1.140929	1
Ptplad2	7.461856	9.535489	9.243579	9.389534	2.073633	1.781723	1
A430104N	6.928605	9.002314	9.077458	9.039886	2.073709	2.148853	2
Tmem110	2.93733	5.011073	4.134168	4.572621	2.073743	1.196838	1
	8.577885	10.65211	10.12972	10.39092	2.074226	1.551835	1
Sbno2	6.219673	8.293985	6.598329	7.446157	2.074312	0.378656	1
	11.48231	13.55727	12.65069	13.10398	2.074963	1.168386	1
H2-T24	4.433585	6.509744	5.573839	6.041792	2.076159	1.140254	1
H2-D1	10.47289	12.55122	11.87791	12.21456	2.078329	1.405019	1
Trem12	5.256221	7.33649	9.332334	8.334412	2.080268	4.076113	2
Kdelr3	3.074261	5.155276	4.973445	5.064361	2.081015	1.899184	1
Ddx21	9.916487	11.99752	11.20673	11.60212	2.081031	1.290238	1
	13.00245	15.08433	14.44721	14.76577	2.081871	1.444759	1
Cdv3	4.571944	6.656686	3.984677	5.320682	2.084743	-0.58727	1
Fhad1	6.331468	8.418144	7.556186	7.987165	2.086676	1.224718	1
Rnh1	7.726145	9.813137	8.944942	9.379039	2.086992	1.218797	1
Ptbp3	3.276605	5.364335	4.803676	5.084005	2.08773	1.527071	1
Gxylt1	5.567947	7.65575	7.152089	7.403919	2.087803	1.584142	1
Tnfsf18	2.917483	5.00591	4.864875	4.935393	2.088428	1.947392	1
Ttf2	8.596388	10.68489	10.65428	10.66959	2.088505	2.057889	2
Fam60a	2.948587	5.037418	5.187482	5.11245	2.088831	2.238895	2
Lgals3bp	10.08377	12.17283	12.15399	12.16341	2.08906	2.070213	2
Phox2a	5.925524	8.015073	7.029421	7.522247	2.089549	1.103897	1
Cacng5	8.822586	10.91431	10.16929	10.5418	2.091726	1.3467	1
	2.41969	4.515797	6.2635	5.389648	2.096107	3.84381	2
	5.910023	8.008473	7.86947	7.938972	2.09845	1.959447	1
Aim2	6.902679	9.001559	8.704069	8.852814	2.09888	1.80139	1
Cklf	7.601	9.700274	9.221619	9.460946	2.099273	1.620619	1
Ftl1	12.03525	14.1352	13.19617	13.66568	2.099958	1.160921	1
Cd53	6.943098	9.043198	8.529492	8.786345	2.1001	1.586394	1
Slamf9	8.281464	10.38353	10.85664	10.62009	2.102067	2.575179	2
Foxj1	6.103683	8.206942	7.855117	8.03103	2.103259	1.751434	1
Pde3a	4.31768	6.421367	6.040897	6.231132	2.103687	1.723217	1

Nras	7.824952	9.92914	9.390717	9.659929	2.104188	1.565765	1
Ucma	7.069772	9.174891	9.229486	9.202188	2.105119	2.159714	2
Gm5431	3.319868	5.427694	5.499731	5.463712	2.107826	2.179863	2
Umodl1	5.290565	7.398566	8.618563	8.008565	2.108001	3.327998	2
Trem2	13.00827	15.11731	15.37591	15.24661	2.10904	2.367636	2
Eif2s3x	6.772658	8.881736	8.668887	8.775312	2.109078	1.896229	1
Esyt1	7.134085	9.243778	8.226468	8.735123	2.109693	1.092383	1
Bcl6b	4.657156	6.767433	5.860587	6.31401	2.110277	1.203432	1
	2.367052	4.478003	4.932948	4.705475	2.11095	2.565896	2
Vps13c	5.876171	7.987516	7.474677	7.731097	2.111345	1.598506	1
Tm4sf1	10.85842	12.97011	11.771	12.37055	2.111689	0.912582	1
Spidr	9.398534	11.51039	11.09969	11.30504	2.111855	1.701156	1
Ptgdr	6.328125	8.440548	8.011689	8.226119	2.112423	1.683564	1
Rnase12	2.418375	4.532571	4.679627	4.606099	2.114197	2.261252	2
Sec14l3	6.69711	8.811917	8.270844	8.54138	2.114807	1.573734	1
Irf8	9.931069	12.04601	11.99876	12.02238	2.114942	2.067686	2
Oit3	5.1702	7.285638	7.375658	7.330648	2.115438	2.205458	2
Prkcd	7.002016	9.118005	9.230882	9.174444	2.115989	2.228866	2
Ticrr	2.388369	4.505857	4.064113	4.284985	2.117488	1.675744	1
Mdfic	10.83582	12.95398	12.80329	12.87863	2.118167	1.967469	1
Fcgr1	9.38859	11.50689	11.14584	11.32637	2.118302	1.757248	1
Pbxip1	7.099205	9.219296	8.567413	8.893354	2.120091	1.468209	1
Micall2	6.381539	8.501908	8.046653	8.274281	2.120369	1.665114	1
Dcn	11.02578	13.14671	12.42058	12.78365	2.12093	1.394794	1
Zc3hav1	9.522018	11.64315	11.24704	11.4451	2.121131	1.725026	1
Itgb7	6.810253	8.931975	8.393457	8.662716	2.121722	1.583204	1
AA536887	4.631075	6.75483	6.843552	6.799191	2.123755	2.212476	2
	5.220116	7.347657	5.085677	6.216667	2.127541	-0.13444	1
Mtr	3.318481	5.446454	6.645726	6.04609	2.127972	3.327245	2
Cd24a	9.147909	11.2761	11.03645	11.15627	2.12819	1.888541	1
Pou4f1	6.896281	9.027492	10.98953	10.00851	2.131211	4.093245	2
Rnu3b1	7.561595	9.692984	8.714945	9.203965	2.131389	1.15335	1
Ceacam12	5.282572	7.414267	5.631737	6.523002	2.131695	0.349165	1
Ncf1	8.415073	10.54744	10.57197	10.5597	2.13237	2.156892	2
Ehd4	8.204058	10.33667	9.822352	10.07951	2.132608	1.618294	1
Adamts1	7.303875	9.436546	8.051157	8.743852	2.132671	0.747282	1
Ipo7	3.819592	5.95271	5.469111	5.710911	2.133119	1.64952	1
Rab23	4.634863	6.768006	4.981096	5.874551	2.133143	0.346233	1
Cav1	3.416863	5.550086	5.533192	5.541639	2.133222	2.116329	2
9030405F2	5.2845	7.418364	3.458829	5.438596	2.133864	-1.82567	1
Lss	4.900962	7.036226	5.625711	6.330969	2.135264	0.724749	1
Kifc1	6.114367	8.252243	7.567076	7.90966	2.137877	1.45271	1
	7.778073	9.917188	9.988709	9.952949	2.139115	2.210636	2
Cep72	2.321946	4.461382	4.262284	4.361833	2.139436	1.940338	1
C130033p1	2.890355	5.030813	7.80003	6.415422	2.140458	4.909675	2
C130026I2	4.56265	6.703237	7.117288	6.910262	2.140587	2.554638	2
Hfe	9.014244	11.15559	11.3601	11.25784	2.141341	2.345857	2

Csf1	10.00032	12.1436	11.28248	11.71304	2.143279	1.282159	1
Txnip	5.579288	7.72266	6.863129	7.292895	2.143372	1.283841	1
Pole	8.859538	11.00393	10.84297	10.92345	2.144394	1.983432	1
Homer3	4.553366	6.698617	4.84577	5.772194	2.145251	0.292404	1
Trim38	4.725547	6.871373	6.38804	6.629706	2.145826	1.662493	1
Dhrs4	4.42505	6.570952	6.093386	6.332169	2.145902	1.668336	1
9130209AC	3.144809	5.290907	5.523471	5.407189	2.146099	2.378663	2
Ctla2a	12.62879	14.77495	14.79902	14.78699	2.146159	2.170233	2
Pla2g4a	10.4049	12.55113	11.99225	12.27169	2.146228	1.587347	1
Calu	7.957366	10.10483	8.976194	9.540514	2.147469	1.018829	1
Tmpo	5.879129	8.027189	7.357649	7.692419	2.148061	1.478521	1
Vmn2r18	4.2277	6.376967	5.291464	5.834216	2.149267	1.063764	1
	8.553339	10.70262	10.15917	10.4309	2.14928	1.605835	1
Rasd1	4.527	6.676993	5.536244	6.106619	2.149994	1.009245	1
Trim14	5.606591	7.758546	7.169379	7.463963	2.151956	1.562788	1
	9.941111	12.09329	11.17442	11.63386	2.152181	1.233312	1
Ptbp3	8.044655	10.19826	9.837017	10.01764	2.153608	1.792362	1
Arpc3	11.68232	13.8361	12.75293	13.29452	2.153775	1.070612	1
	4.474494	6.628748	6.589989	6.609369	2.154254	2.115495	2
Sppl2a	4.241064	6.398109	5.429289	5.913699	2.157045	1.188225	1
Stt3a	4.177577	6.3407	5.513495	5.927097	2.163123	1.335919	1
Murc	4.572571	6.735711	6.012984	6.374347	2.163139	1.440413	1
Cp	6.183477	8.347342	7.881298	8.11432	2.163865	1.697821	1
Cntf	9.039247	11.20365	11.45009	11.32687	2.164399	2.410847	2
Has2	6.788754	8.95328	9.605242	9.279261	2.164526	2.816489	2
Akr1c13	6.054217	8.218948	8.289351	8.254149	2.164731	2.235133	2
Hvcn1	10.17836	12.34349	12.89041	12.61695	2.165133	2.712053	2
Gfap	4.465427	6.633919	5.453597	6.043758	2.168492	0.98817	1
Dsp	6.884836	9.053345	9.968744	9.511045	2.168509	3.083908	2
	13.99539	16.16468	15.68396	15.92432	2.169289	1.688571	1
Npy2r	7.335622	9.505998	10.15119	9.828594	2.170376	2.815567	2
Klf13	2.321946	4.493179	4.248658	4.370919	2.171233	1.926712	1
Olfr115	4.359532	6.530917	5.331516	5.931217	2.171385	0.971984	1
	12.24851	14.42362	13.77927	14.10145	2.175112	1.53076	1
Ncf2	10.51497	12.69165	12.69745	12.69455	2.176683	2.182483	2
Serp1	9.441923	11.61895	11.29934	11.45914	2.17703	1.857412	1
	13.4829	15.66051	15.16426	15.41239	2.177615	1.681369	1
Olfr1496	2.321946	4.500214	4.343349	4.421782	2.178268	2.021403	2
Kcnj13	8.755717	10.93482	9.823517	10.37917	2.179106	1.0678	1
Grrp1	9.862238	12.042	11.09269	11.56734	2.179757	1.23045	1
Slc16a6	2.92415	5.105204	5.066134	5.085669	2.181054	2.141983	2
Nrp2	10.98971	13.17112	13.11376	13.14244	2.181418	2.124052	2
Trim47	10.05724	12.24219	11.39972	11.82095	2.184949	1.342479	1
Ddx58	9.310118	11.49581	11.14145	11.31863	2.185693	1.831335	1
Gbp2b	7.577568	9.765104	9.815286	9.790195	2.187536	2.237718	2
Nek6	10.12196	12.3096	11.47918	11.89439	2.187637	1.357219	1
Lcp2	5.133837	7.32177	7.53604	7.428905	2.187933	2.402203	2

Col18a1	8.598292	10.78631	10.54045	10.66338	2.188015	1.94216	1
Olfr803	4.016453	6.204731	4.206102	5.205417	2.188278	0.189649	1
	4.398449	6.586781	4.652848	5.619815	2.188332	0.254399	1
	13.63692	15.82936	15.27886	15.55411	2.192434	1.641939	1
Mmp13	2.321946	4.514708	5.421634	4.968171	2.192762	3.099688	2
Zmynd15	7.164534	9.357715	9.487491	9.422603	2.193181	2.322957	2
Gstm2	3.867306	6.060787	4.858003	5.459395	2.193481	0.990697	1
Foxm1	7.812199	10.008	9.72105	9.864525	2.1958	1.908851	1
	12.13291	14.3304	13.38059	13.85549	2.197494	1.247682	1
Gm867	5.523	7.720568	7.387182	7.553875	2.197568	1.864182	1
Chst9	4.740122	6.939579	6.643217	6.791398	2.199456	1.903095	1
Csf1	6.966557	9.167309	9.004614	9.085962	2.200752	2.038057	2
4930547C1	3.858417	6.059766	4.289034	5.1744	2.201349	0.430617	1
Gm8995	4.30709	6.510145	5.158009	5.834077	2.203055	0.850919	1
Loxl1	6.742837	8.946275	8.288931	8.617603	2.203439	1.546095	1
Dnah12	4.685741	6.889987	4.408897	5.649442	2.204246	-0.27684	1
Cks1b	10.73228	12.93774	12.45156	12.69465	2.205461	1.719279	1
Aox3	2.389461	4.595016	5.071926	4.833471	2.205554	2.682465	2
H2-Q10	4.32542	6.531718	5.583721	6.05772	2.206298	1.258301	1
Ahnak	7.125325	9.332136	9.91409	9.623113	2.206811	2.788765	2
Blnk	11.93973	14.14704	14.04036	14.0937	2.207313	2.100635	2
	13.98182	16.18968	15.67975	15.93472	2.207866	1.697934	1
Crxos1	3.899881	6.10953	4.89647	5.503	2.20965	0.996589	1
Smim5	2.321946	4.533735	4.572571	4.553153	2.211789	2.250625	2
Bpifa6	4.69048	6.904709	5.460953	6.182831	2.214229	0.770473	1
S1pr3	10.05599	12.27142	11.50302	11.88722	2.215432	1.447029	1
Rab38	4.584235	6.79971	7.424606	7.112158	2.215475	2.840372	2
Irgm1	9.629868	11.84595	11.34638	11.59616	2.216078	1.716509	1
Hmgn2	5.559192	7.775467	6.610375	7.192921	2.216276	1.051183	1
Cebpa	7.172545	9.390866	8.756887	9.073876	2.218321	1.584342	1
Epb4.2	2.344473	4.562859	7.168274	5.865567	2.218386	4.823801	2
Gm11545	3.712074	5.932944	6.23138	6.082162	2.22087	2.519306	2
	3.543269	5.764936	4.42505	5.094993	2.221667	0.881781	1
Nsl1	7.935739	10.15856	10.33112	10.24484	2.222825	2.39538	2
	6.218378	8.442389	6.809628	7.626009	2.224011	0.59125	1
Gpr115	5.274097	7.499185	7.651149	7.575167	2.225088	2.377053	2
Lrp8	4.98183	7.209463	6.282806	6.746135	2.227633	1.300977	1
Cdrt4	3.41662	5.644267	5.227917	5.436092	2.227647	1.811297	1
Mab21l1	3.870934	6.101759	5.836467	5.969113	2.230825	1.965533	1
Emr1	11.68574	13.91689	14.5153	14.21609	2.231147	2.829556	2
Gstcd	3.963011	6.196633	5.708868	5.952751	2.233622	1.745857	1
5430401F1	6.405628	8.646296	6.379469	7.512883	2.240668	-0.02616	1
Col16a1	12.05779	14.29942	14.13101	14.21522	2.241633	2.073223	2
Mapk1ip1l	5.208137	7.451088	7.103273	7.277181	2.242951	1.895136	1
Gm13272	3.701514	5.944873	6.674461	6.309667	2.243359	2.972947	2
Hn1l	8.594238	10.83788	10.56274	10.70031	2.243646	1.968504	1
Ces2e	4.671021	6.916287	6.303407	6.609847	2.245266	1.632386	1

	2.321946	4.567735	4.834453	4.701094	2.245789	2.512507	2
Bin2	5.314138	7.560125	5.887453	6.723789	2.245987	0.573314	1
2310011E2	2.321946	4.569314	4.811737	4.690526	2.247368	2.489791	2
Spry2	4.049218	6.296954	6.23159	6.264272	2.247736	2.182372	2
9330175E1	3.637818	5.887073	5.633482	5.760278	2.249255	1.995664	1
Nid2	7.450114	9.701201	9.321991	9.511596	2.251087	1.871877	1
Cotl1	13.69845	15.95035	15.84782	15.89909	2.251906	2.149373	2
Slc11a1	7.338035	9.591887	8.877706	9.234796	2.253852	1.539671	1
Fkbp10	10.47508	12.73198	12.19759	12.46479	2.2569	1.722514	1
Asap3	6.757296	9.014244	8.361442	8.687843	2.256948	1.604146	1
Dapp1	6.7131	8.970834	8.996029	8.983432	2.257734	2.282929	2
Nup188	5.407502	7.668902	6.030771	6.849837	2.2614	0.62327	1
Calca	7.357283	9.620832	9.499093	9.559963	2.263549	2.14181	2
1300002K0	6.226704	8.491067	8.965692	8.72838	2.264363	2.738988	2
Atf5	12.26066	14.52562	13.70684	14.11623	2.26496	1.446185	1
Clca3	2.321946	4.588108	4.158129	4.373118	2.266162	1.836183	1
Vmn2r-ps5	2.321946	4.590107	4.308434	4.449271	2.268161	1.986488	1
	2.321946	4.592069	4.559322	4.575696	2.270123	2.237376	2
Hmga2	6.907581	9.178214	8.664125	8.92117	2.270633	1.756544	1
Bcl2l14	5.776368	8.047591	4.931596	6.489594	2.271223	-0.84477	1
Olfr371	5.226893	7.498568	4.793105	6.145836	2.271675	-0.43379	1
Gal3st4	6.782741	9.056112	8.621696	8.838904	2.273371	1.838955	1
Bag3	8.825977	11.0994	10.97328	11.03634	2.273419	2.147304	2
Rad51	6.994471	9.268894	9.108846	9.18887	2.274423	2.114375	2
Car9	5.484837	7.759473	8.694691	8.227082	2.274636	3.209854	2
Dbf4	6.196279	8.471568	7.700351	8.085959	2.275289	1.504072	1
	3.976684	6.25531	5.634837	5.945073	2.278626	1.658153	1
Mcm2	8.988736	11.26743	10.6103	10.93886	2.27869	1.621565	1
B4galt1	8.874138	11.1535	10.69228	10.92289	2.279359	1.818144	1
Cd79b	5.190229	7.469817	7.793523	7.63167	2.279588	2.603294	2
Tirap	5.737465	8.017197	7.113082	7.56514	2.279732	1.375617	1
Isg20	5.692915	7.973214	7.256732	7.614973	2.280299	1.563816	1
Gna13	2.321946	4.602593	4.023402	4.312997	2.280647	1.701456	1
Sla	6.295893	8.57663	8.205036	8.390833	2.280737	1.909143	1
Arhgdib	10.21518	12.49623	12.22119	12.35871	2.281051	2.006009	2
Trf	14.34594	16.62729	16.2722	16.44974	2.281353	1.926262	1
Gmfg	8.071669	10.35321	10.57704	10.46512	2.281536	2.505372	2
Capsl	5.170769	7.452664	7.807147	7.629906	2.281895	2.636378	2
Hmgn2	6.402486	8.685675	7.865021	8.275348	2.283189	1.462535	1
Apbb1ip	10.79367	13.07701	12.64545	12.86123	2.283342	1.851775	1
4833427G0	4.732894	7.0188	7.063653	7.041226	2.285907	2.330759	2
Gm5088	4.880465	7.167959	5.415745	6.291852	2.287494	0.535281	1
Cyp2r1	4.261442	6.549447	6.174537	6.361992	2.288005	1.913095	1
B230110G1	4.947981	7.236837	7.655335	7.446086	2.288856	2.707354	2
Cmtm2a	5.231172	7.522997	6.925207	7.224102	2.291826	1.694035	1
	7.34793	9.640649	10.2342	9.937424	2.29272	2.886269	2
Lrrfip2	3.659361	5.953366	4.461046	5.207206	2.294005	0.801685	1

Cnn3	7.608314	9.903601	9.261871	9.582736	2.295287	1.653557	1
Dhh	5.609115	7.904642	7.414777	7.659709	2.295527	1.805662	1
Cmtm2a	3.849209	6.145072	3.833711	4.989391	2.295863	-0.0155	1
Kctd10	5.924914	8.221081	7.648923	7.935002	2.296167	1.724009	1
Cdc40	4.170412	6.467802	3.783544	5.125673	2.29739	-0.38687	1
Hbegf	9.764431	12.06204	11.11067	11.58635	2.297606	1.346242	1
Nupr1	9.630844	11.92987	12.05086	11.99037	2.299027	2.420019	2
Mageh1	5.429289	7.728322	6.654499	7.191411	2.299033	1.22521	1
Mfsd1	7.388808	9.688055	9.091347	9.389701	2.299247	1.702539	1
	10.27788	12.57754	11.80933	12.19343	2.29966	1.531452	1
Mcoln2	5.965487	8.265595	7.687435	7.976515	2.300108	1.721948	1
	3.221191	5.522049	5.076405	5.299227	2.300858	1.855215	1
Galnt15	8.337699	10.63888	10.13344	10.38616	2.301184	1.795737	1
Plscr1	8.596029	10.89754	10.36983	10.63369	2.301515	1.773801	1
Pdcd6ip	2.739744	5.042855	3.848243	4.445549	2.303111	1.108499	1
Cxcl16	9.506953	11.81069	12.19696	12.00382	2.303737	2.690005	2
Fam83g	5.544474	7.849451	7.991871	7.920661	2.304977	2.447397	2
Phlda2	2.321946	4.627377	4.188003	4.40769	2.305431	1.866057	1
Rhbdf2	8.346394	10.65611	9.866783	10.26145	2.309718	1.520389	1
Cd200r1	6.867943	9.178513	8.958651	9.068582	2.31057	2.090708	2
Sp110	9.06551	11.37716	11.09848	11.23782	2.311648	2.032968	2
Vmn2r62	2.321946	4.634219	4.117309	4.375764	2.312273	1.795363	1
Ctsc	2.321946	4.634363	3.889446	4.261904	2.312417	1.5675	1
Rad18	2.321946	4.635798	4.421977	4.528887	2.313851	2.100031	2
Ehd1	5.46633	7.780422	6.856318	7.31837	2.314092	1.389988	1
Ces2b	3.137645	5.452743	5.246513	5.349628	2.315097	2.108868	2
Ecscr	10.44737	12.76294	12.31045	12.5367	2.315567	1.863082	1
Gart	4.759715	7.081725	5.816872	6.449298	2.32201	1.057157	1
Il10rb	8.221526	10.54513	9.82858	10.18686	2.323605	1.607054	1
	5.313758	7.638384	8.050613	7.844499	2.324626	2.736855	2
Slc9a2	4.832591	7.157923	6.568019	6.862971	2.325332	1.735428	1
Pik3r5	6.663013	8.990747	8.523167	8.756957	2.327734	1.860154	1
Vmn1r49	2.321946	4.649738	4.449607	4.549673	2.327792	2.127661	2
5830432E0	2.321946	4.651069	4.210269	4.430669	2.329123	1.888323	1
Rab3il1	11.03349	13.36416	12.76437	13.06427	2.330671	1.730873	1
Rbm47	5.677428	8.008925	7.489056	7.74899	2.331496	1.811627	1
Ece2	9.205776	11.53988	10.76612	11.153	2.334104	1.560342	1
Oip5	4.286703	6.621232	6.355869	6.488551	2.334529	2.069166	2
Ppap2a	2.366813	4.701911	4.143191	4.422551	2.335098	1.776378	1
2610203C2	3.55741	5.893133	5.853688	5.873411	2.335723	2.296278	2
Srgn	11.4368	13.77289	13.09997	13.43643	2.33609	1.663172	1
Hmgn2	9.042782	11.38198	10.7583	11.07014	2.339199	1.715518	1
Ston2	2.571264	4.910651	4.209664	4.560158	2.339387	1.638401	1
Lonrf3	7.951176	10.29148	10.02645	10.15896	2.340304	2.075269	2
Itgb1	6.856318	9.197427	8.539231	8.868329	2.341109	1.682913	1
Mxd3	4.442976	6.785808	6.83284	6.809324	2.342832	2.389864	2
Ier3	7.057193	9.400373	7.71712	8.558746	2.34318	0.659926	1

Tnfaip8l2	6.087345	8.430963	8.427583	8.429273	2.343618	2.340238	2
Slc4a11	8.270409	10.61513	9.595525	10.10533	2.344716	1.325116	1
Ltbr	10.86171	13.20769	12.51794	12.86282	2.345981	1.656228	1
	7.638569	9.98516	9.406503	9.695832	2.346591	1.767934	1
Rad51b	4.512879	6.859669	6.949715	6.904692	2.34679	2.436836	2
Adamts14	5.858195	8.205036	8.082904	8.14397	2.346841	2.224709	2
Cks2	7.388661	9.735939	9.675628	9.705784	2.347278	2.286967	2
Serping1	8.604982	10.95253	10.8104	10.88146	2.347546	2.205417	2
C030044M	5.41468	7.765545	3.642689	5.704117	2.350865	-1.77199	1
Il1r1	8.695579	11.0476	10.1674	10.6075	2.352023	1.471818	1
Gldn	9.353268	11.70605	12.0498	11.87793	2.352786	2.696528	2
2010315BC	5.261609	7.616549	4.972673	6.294611	2.35494	-0.28894	1
Tnfrsf1a	6.253148	8.610992	7.66997	8.140481	2.357844	1.416822	1
Gpx8	9.481235	11.83917	11.18496	11.51206	2.35793	1.703729	1
Kif23	5.365848	7.724051	7.106137	7.415094	2.358203	1.74029	1
Ctsd	13.52682	15.8853	15.87924	15.88227	2.358479	2.352422	2
Gpr64	4.77228	7.130846	5.310455	6.220651	2.358566	0.538175	1
Defa-rs2	8.128622	10.4896	12.9231	11.70635	2.360975	4.794475	2
Cenpe	9.089813	11.45115	11.46191	11.45653	2.361336	2.372094	2
Hn1l	4.342939	6.705494	5.664313	6.184903	2.362555	1.321374	1
Rbm47	5.214616	7.577694	7.171086	7.37439	2.363078	1.95647	1
Spn	2.336334	4.699561	4.525047	4.612304	2.363227	2.188713	2
Angptl4	10.15856	12.52199	11.92665	12.22432	2.36343	1.768087	1
Pstpip1	5.178442	7.542596	6.635107	7.088851	2.364154	1.456665	1
Fhod1	7.064529	9.42906	8.564577	8.996819	2.364531	1.500048	1
	13.32634	15.69126	15.03213	15.3617	2.364926	1.705794	1
	8.135335	10.5016	9.603742	10.05267	2.366264	1.468407	1
Htr4	5.626669	7.99859	8.507145	8.252867	2.37192	2.880476	2
	5.411938	7.784126	7.810578	7.797352	2.372189	2.39864	2
Sh3bp2	9.347178	11.72603	11.59556	11.66079	2.37885	2.24838	2
	6.804922	9.185399	9.772334	9.478867	2.380477	2.967412	2
	4.246353	6.628072	5.315145	5.971608	2.381719	1.068792	1
Samd11	2.321946	4.703676	5.130446	4.917061	2.38173	2.8085	2
Npm1	9.619587	12.0022	11.45748	11.72984	2.38261	1.837896	1
	5.243826	7.626664	7.236605	7.431634	2.382837	1.992779	1
	3.575734	5.959412	4.165675	5.062543	2.383678	0.58994	1
150001501	9.52751	11.91132	11.5505	11.73091	2.383811	2.022989	2
Syne3	2.757051	5.141486	4.454618	4.798052	2.384435	1.697567	1
Procr	8.38286	10.7677	10.71417	10.74093	2.38484	2.33131	2
Arhgap9	8.612451	10.99813	10.95041	10.97427	2.385683	2.33796	2
	2.321946	4.709016	5.67214	5.190578	2.38707	3.350194	2
Tshz2	6.451155	8.839065	8.263906	8.551486	2.38791	1.812751	1
Mdfi	4.009561	6.400655	7.176356	6.788506	2.391095	3.166795	2
Pon3	9.478649	11.87035	12.24353	12.05694	2.391696	2.76488	2
Irs1	5.116665	7.512625	8.179853	7.846239	2.395959	3.063187	2
Olfr32	2.498201	4.894597	4.42439	4.659493	2.396395	1.926189	1
B3gnt5	6.99493	9.392222	9.360083	9.376153	2.397292	2.365153	2



Zfp36	5.759858	8.160694	7.126582	7.643638	2.400836	1.366724	1
Chst9	4.593633	6.996625	7.312682	7.154653	2.402992	2.719049	2
Olfr1420	2.321946	4.725915	4.081229	4.403572	2.403969	1.759283	1
Ccdc73	3.632915	6.037451	5.108766	5.573108	2.404537	1.475851	1
Gm10387	4.200823	6.608082	5.867419	6.237751	2.407259	1.666596	1
Scimp	5.335978	7.748435	7.324619	7.536527	2.412457	1.988641	1
Srrt	4.227166	6.640154	4.966281	5.803218	2.412988	0.739115	1
Shcbp1	8.394759	10.80862	11.04946	10.92904	2.413861	2.654701	2
	4.525851	6.9406	3.832633	5.386617	2.414749	-0.69322	1
Psemb9	8.191626	10.60669	9.98751	10.2971	2.415066	1.795884	1
Gm7931	5.846721	8.266873	7.466943	7.866908	2.420152	1.620222	1
Maff	7.249081	9.669854	8.99745	9.333652	2.420773	1.748369	1
Tspan4	10.73607	13.15726	12.24168	12.69947	2.421192	1.50561	1
Gm4907	5.264029	7.687916	7.344164	7.51604	2.423888	2.080136	2
Tead4	3.123859	5.548314	4.254559	4.901436	2.424455	1.1307	1
H2-DMb1	6.688696	9.113769	8.827611	8.97069	2.425073	2.138915	2
Ttk	2.744582	5.1702	4.68355	4.926875	2.425618	1.938968	1
Ncaph	9.423946	11.852	11.71503	11.78351	2.42805	2.291081	2
	5.461507	7.889562	7.32618	7.607871	2.428055	1.864673	1
Gbp3	11.20449	13.63568	13.57103	13.60336	2.431188	2.366541	2
Ncf2	2.321946	4.75359	4.691109	4.72235	2.431644	2.369163	2
D330045A	6.056996	8.488656	7.670349	8.079502	2.43166	1.613353	1
Pkp2	8.421968	10.85525	11.02246	10.93885	2.433279	2.600492	2
Plscr2	9.334377	11.77155	11.43674	11.60414	2.437168	2.102359	2
Magt1	6.507318	8.944942	8.676358	8.81065	2.437624	2.169041	2
Cdt1	9.069261	11.50885	10.94462	11.22673	2.439588	1.875358	1
Ang2	3.249389	5.689039	5.316425	5.502732	2.43965	2.067036	2
Afg3l1	2.321946	4.764824	5.303662	5.034243	2.442878	2.981716	2
Dap	8.155914	10.60161	10.30231	10.45196	2.445697	2.146398	2
Ranbp3l	2.746644	5.193025	3.847118	4.520072	2.446381	1.100475	1
Lcorl	3.78243	6.229802	5.614687	5.922245	2.447372	1.832257	1
Cybrd1	5.259571	7.707443	8.295932	8.001687	2.447872	3.036361	2
Eps15l1	7.151183	9.599944	9.352325	9.476134	2.448761	2.201142	2
Tnfrsf26	5.473581	7.922655	7.739693	7.831174	2.449074	2.266111	2
Hspb6	11.43278	13.88502	13.5368	13.71091	2.452241	2.104024	2
Slc30a7	4.459063	6.911888	5.942314	6.427101	2.452825	1.483251	1
Cd1d1	3.598137	6.052539	5.985651	6.019095	2.454402	2.387514	2
Xlr5a	4.962116	7.41803	4.787048	6.102539	2.455914	-0.17507	1
Tec	4.741998	7.199947	5.897714	6.54883	2.457949	1.155716	1
Rab27a	3.125477	5.584563	4.513736	5.04915	2.459086	1.388259	1
Car13	7.298983	9.758875	9.17439	9.466633	2.459892	1.875407	1
Ear11	2.327242	4.789576	4.608207	4.698891	2.462334	2.280965	2
Ddx11	4.967044	7.431702	7.161686	7.296694	2.464658	2.194642	2
Pole	4.759218	7.227336	6.993499	7.110418	2.468118	2.234282	2
	2.361441	4.830049	6.518264	5.674156	2.468608	4.156823	2
Tmem184a	3.228335	5.699102	4.534914	5.117008	2.470768	1.306579	1
	5.432774	7.904056	4.618553	6.261305	2.471282	-0.81422	1

Gsg2	4.53528	7.007299	6.578653	6.792976	2.47202	2.043374	2
Gm2005	2.321946	4.795168	4.232073	4.513621	2.473222	1.910127	1
	3.418194	5.892145	4.806461	5.349303	2.473951	1.388268	1
	6.165069	8.64084	7.795944	8.218392	2.475771	1.630875	1
Rars	4.562154	7.038074	6.437514	6.737794	2.47592	1.87536	1
Parpbp	4.686118	7.163219	7.442605	7.302912	2.477101	2.756487	2
Cenpa	6.170401	8.650336	8.015514	8.332925	2.479935	1.845113	1
Gpr171	3.969419	6.449373	5.654493	6.051933	2.479955	1.685075	1
Arpc3	10.14881	12.63108	11.45563	12.04335	2.482273	1.306825	1
	4.069077	6.551999	6.041259	6.296629	2.482922	1.972182	1
1110025L1	3.723558	6.207109	6.344236	6.275672	2.48355	2.620678	2
Neat1	12.23014	14.7143	13.88934	14.30182	2.484157	1.659194	1
Eef2k	3.737388	6.221551	5.208881	5.715216	2.484163	1.471494	1
	5.331319	7.816185	6.920794	7.368489	2.484865	1.589474	1
C1qb	8.767234	11.25396	10.95306	11.10351	2.48673	2.185822	2
Ucp3	5.847265	8.334892	8.231858	8.283375	2.487627	2.384593	2
Rpp40	4.579625	7.069259	6.204731	6.636995	2.489634	1.625106	1
Gch1	8.074237	10.5649	9.63481	10.09986	2.490663	1.560573	1
C130026I2	4.669228	7.160112	7.772413	7.466263	2.490884	3.103186	2
Gm9733	2.321946	4.814146	5.297526	5.055836	2.4922	2.97558	2
Gm1110	2.321946	4.814537	4.249646	4.532091	2.492591	1.9277	1
Tlr13	10.99318	13.4858	12.92131	13.20355	2.49262	1.92813	1
Ppic	8.312062	10.80563	10.70635	10.75599	2.493567	2.39429	2
Col5a3	8.052122	10.54657	11.07755	10.81206	2.494444	3.02543	2
Csf1	6.016891	8.512165	8.298254	8.40521	2.495275	2.281364	2
Gins1	8.263906	10.76005	10.40606	10.58306	2.496146	2.142158	2
Hk3	5.368331	7.864579	6.297535	7.081057	2.496247	0.929203	1
Cks1b	10.11993	12.61622	12.20105	12.40863	2.496286	2.081121	2
Mak	4.645167	7.146598	7.535328	7.340963	2.501431	2.890161	2
Arpc1b	12.98473	15.4866	15.3455	15.41605	2.501868	2.360772	2
Hck	9.835857	12.33924	12.04999	12.19462	2.503386	2.214131	2
Ly96	7.298803	9.804507	9.384894	9.594701	2.505704	2.086091	2
Nfe2	4.462921	6.974466	5.312954	6.14371	2.511546	0.850033	1
Klrd1	4.516954	7.029154	4.492874	5.761014	2.512201	-0.02408	1
	10.12234	12.63514	12.18035	12.40775	2.512802	2.058016	2
Actn1	6.209612	8.723121	4.779328	6.751225	2.513509	-1.43028	1
Ceacam12	2.321946	4.835479	3.849209	4.342344	2.513533	1.527263	1
Zbp1	6.996338	9.51018	8.842089	9.176134	2.513842	1.845751	1
Pter	4.094363	6.608634	7.054709	6.831672	2.514271	2.960346	2
Gngt2	10.84806	13.36634	13.43247	13.39941	2.518288	2.584414	2
Ucp2	7.332441	9.851197	9.947638	9.899418	2.518756	2.615197	2
Krt8	5.4089	7.928147	7.533036	7.730592	2.519247	2.124136	2
Apobr	5.614687	8.134563	7.556914	7.845739	2.519876	1.942227	1
4930404O1	4.83913	7.360329	3.991216	5.675772	2.521198	-0.84791	1
Hnrnpa3	5.532384	8.054346	4.472429	6.263388	2.521962	-1.05996	1
Prrx2	7.653064	10.17736	9.82503	10.00119	2.524295	2.171966	2
Evi2a-evi2t	3.451835	5.977507	5.263921	5.620714	2.525672	1.812086	1

Cd1d1	7.227445	9.754775	10.15536	9.955066	2.52733	2.927911	2
Rbl1	4.122454	6.650114	6.256637	6.453375	2.52766	2.134183	2
Atp1a2	7.60177	10.12944	9.206297	9.667867	2.527667	1.604527	1
Efcab11	2.514214	5.04548	5.435951	5.240715	2.531266	2.921737	2
Cd63	13.40729	15.94014	15.50185	15.72099	2.532851	2.094558	2
Scgb1c1	4.719688	7.253847	4.728528	5.991187	2.534158	0.00884	1
Fam25c	3.330323	5.870158	6.53943	6.204794	2.539835	3.209108	2
Klrc1	5.951241	8.491973	5.623941	7.057957	2.540732	-0.3273	1
Lgals3bp	12.06863	14.61493	14.79519	14.70506	2.546296	2.726555	2
Apof	2.321946	4.86972	4.316353	4.593037	2.547774	1.994407	1
Afp	7.026458	9.575906	9.337589	9.456748	2.549448	2.311131	2
Dok1	4.058025	6.607519	5.913409	6.260464	2.549493	1.855383	1
Odc1	4.387716	6.937368	5.562032	6.2497	2.549652	1.174315	1
Gm6531	4.397289	6.947571	5.924063	6.435817	2.550282	1.526773	1
Clec1b	3.529007	6.079421	7.089638	6.58453	2.550414	3.560631	2
Bard1	6.307956	8.859268	8.625197	8.742233	2.551312	2.317241	2
Ugt1a6b	10.63428	13.18652	13.07455	13.13054	2.552247	2.440273	2
Esm1	5.65324	8.205606	8.899295	8.55245	2.552366	3.246055	2
C530044C1	5.682767	8.241665	8.660778	8.451222	2.558898	2.978011	2
T	4.210401	6.770009	7.532394	7.151202	2.559608	3.321993	2
Snrpd3	9.617065	12.17829	11.0968	11.63755	2.561227	1.479735	1
Ctla2b	9.694103	12.25639	11.99327	12.12483	2.56229	2.299163	2
Pdia3	10.97185	13.53513	12.02656	12.78084	2.563274	1.054708	1
Stac	5.745602	8.309728	8.664975	8.487352	2.564126	2.919373	2
Skap2	10.3909	12.95831	12.60402	12.78117	2.567411	2.213122	2
Chi3l1	11.20365	13.77134	12.67969	13.22551	2.567689	1.476046	1
Shmt1	3.477397	6.046688	5.199563	5.623125	2.569291	1.722166	1
Slc4a5	6.628072	9.201991	6.971082	8.086537	2.573919	0.34301	1
A530064N	2.321946	4.896158	4.598985	4.747572	2.574212	2.277039	2
Tagln	11.38266	13.95888	13.14059	13.54973	2.576214	1.757923	1
Gdf7	4.084397	6.66266	3.881026	5.271843	2.578263	-0.20337	1
Cbr2	8.674138	11.25313	10.45541	10.85427	2.578993	1.781272	1
Trim30a	8.262313	10.84146	10.67548	10.75847	2.579142	2.413171	2
P2ry2	6.904731	9.485524	8.860883	9.173204	2.580793	1.956152	1
Gm12666	6.258884	8.841311	6.224379	7.532845	2.582427	-0.03451	1
	3.997528	6.581489	5.251223	5.916356	2.583961	1.253695	1
Spc25	8.679662	11.2644	11.69328	11.47884	2.584741	3.013617	2
Tyrobp	11.47306	14.05845	14.23186	14.14516	2.585391	2.758801	2
Havcr2	9.362333	11.94867	12.3916	12.17013	2.586336	3.029263	2
Anxa1	10.86439	13.45643	13.25631	13.35637	2.592041	2.391913	2
	7.333487	9.926402	9.755029	9.840716	2.592915	2.421542	2
Plek	12.00777	14.6029	14.57332	14.58811	2.59513	2.565547	2
Actbl2	3.688638	6.284661	5.456323	5.870492	2.596023	1.767684	1
Olfr926	5.487903	8.084743	5.482298	6.783521	2.59684	-0.0056	1
	3.424417	6.02135	5.552771	5.78706	2.596933	2.128354	2
Adamts9	7.305536	9.906014	9.096751	9.501382	2.600477	1.791215	1
4933432I0	2.321946	4.922878	5.057522	4.9902	2.600932	2.735576	2

Batf	5.467742	8.071076	7.047331	7.559204	2.603335	1.57959	1
Exo1	7.140486	9.745814	9.270588	9.508201	2.605328	2.130102	2
	2.321946	4.931896	4.177577	4.554736	2.60995	1.85563	1
Lgals9	6.412075	9.022453	8.735394	8.878924	2.610378	2.323319	2
Lcp1	6.37313	8.983643	8.550641	8.767142	2.610513	2.177511	2
Ripk1	5.944538	8.555263	7.610468	8.082866	2.610725	1.66593	1
Rbp1	10.95253	13.5641	14.06315	13.81363	2.611571	3.110624	2
Pnp2	4.524758	7.139461	7.449226	7.294344	2.614703	2.924468	2
Spg20	4.449607	7.065002	4.937246	6.001124	2.615395	0.487639	1
	4.729009	7.344636	6.474851	6.909744	2.615627	1.745842	1
Atp6v0d2	2.321946	4.941064	4.219377	4.580221	2.619118	1.897431	1
Clec12b	4.005143	6.62554	4.277834	5.451687	2.620398	0.272691	1
Csf1r	5.238265	7.860147	7.76886	7.814504	2.621882	2.530595	2
Ada	8.39403	11.01893	10.58488	10.80191	2.624898	2.190854	2
Ccnd1	10.41126	13.0369	11.58966	12.31328	2.625632	1.178398	1
Sptlc2	4.370967	6.998421	6.063922	6.531171	2.627454	1.692954	1
4930543E1	5.556593	8.185311	4.895991	6.540651	2.628718	-0.6606	1
Alas2	5.775123	8.405182	7.879356	8.142269	2.630059	2.104233	2
Dock2	3.563871	6.19586	4.212361	5.204111	2.63199	0.648491	1
4930427AC	2.396903	5.030349	4.321909	4.676129	2.633447	1.925006	1
Rnf183	2.321946	4.955686	5.368019	5.161852	2.63374	3.046073	2
Bpifb3	6.841839	9.475936	8.211951	8.843944	2.634097	1.370112	1
Sp140	3.34634	5.980736	5.968383	5.97456	2.634397	2.622043	2
Lrp4	5.329625	7.969902	7.055029	7.512465	2.640277	1.725404	1
Ccdc36	4.975177	7.617607	4.637553	6.12758	2.64243	-0.33762	1
Aqp1	5.281027	7.924599	8.211706	8.068152	2.643571	2.930679	2
Mmp27	4.304946	6.949715	7.060165	7.00494	2.644769	2.755219	2
Ccdc67	2.321946	4.973236	5.764936	5.369086	2.65129	3.44299	2
	3.328859	5.980244	5.281814	5.631029	2.651385	1.952955	1
Ptpn18	10.49601	13.14851	12.7282	12.93835	2.652493	2.232183	2
C1qc	13.0853	15.73815	16.00266	15.8704	2.652848	2.917365	2
Gfpt1	3.410154	6.065811	4.42516	5.245486	2.655656	1.015006	1
Dpep2	5.715283	8.37167	8.187655	8.279662	2.656387	2.472371	2
Mab21l2	3.431315	6.094352	6.466225	6.280288	2.663037	3.034909	2
	3.682257	6.346654	8.584414	7.465534	2.664398	4.902158	2
Tnfsf8	2.329691	4.995064	4.106315	4.550689	2.665373	1.776624	1
	2.321946	4.990502	4.820251	4.905377	2.668556	2.498305	2
	6.19586	8.866595	7.22203	8.044312	2.670735	1.026169	1
Shroom3	6.26672	8.939835	8.478719	8.709277	2.673115	2.211999	2
	6.858886	9.53361	8.766407	9.150009	2.674724	1.907521	1
4732419C1	4.27095	6.948844	7.691278	7.320061	2.677894	3.420328	2
Gjb3	4.210889	6.899552	8.155514	7.527533	2.688663	3.944625	2
Casp8	7.017107	9.707144	9.129685	9.418415	2.690037	2.112578	2
Fam83e	2.321946	5.013948	4.76235	4.888149	2.692002	2.440404	2
Mapkapk3	2.852089	5.544316	5.009187	5.276752	2.692227	2.157098	2
Ms4a4c	5.17836	7.871967	6.551625	7.211796	2.693608	1.373266	1
4933403J1	4.35925	7.057193	5.455226	6.25621	2.697943	1.095976	1

Olfml2b	4.709622	7.407855	6.443637	6.925746	2.698233	1.734015	1
Rgs18	4.336443	7.034993	6.909645	6.972319	2.69855	2.573203	2
Rtp4	10.41463	13.11443	12.63807	12.87625	2.699794	2.223432	2
Clic6	6.541555	9.246715	8.356927	8.801821	2.705161	1.815373	1
Tmem239	4.119617	6.826247	4.250166	5.538206	2.70663	0.130549	1
1700037C1	5.327844	8.036079	4.910769	6.473424	2.708235	-0.41708	1
5730416F0	5.627107	8.335352	6.135063	7.235208	2.708245	0.507956	1
Slc35d2	5.087338	7.796404	7.405343	7.600874	2.709066	2.318005	2
Rsad2	6.910751	9.621481	9.241179	9.43133	2.71073	2.330427	2
Frem3	2.321946	5.032793	6.863906	5.94835	2.710847	4.54196	2
Nek2	5.122257	7.834348	7.520008	7.677178	2.712091	2.397751	2
Cyba	7.293128	10.0096	9.355593	9.682596	2.716472	2.062466	2
Gdnf	4.014481	6.73205	6.627136	6.679593	2.717569	2.612655	2
Tnfrsf1a	10.15467	12.87692	12.26143	12.56918	2.722252	2.106762	2
Ncl	8.828174	11.55088	9.922273	10.73658	2.722706	1.094099	1
Fgl2	4.973236	7.698648	7.6731	7.685874	2.725412	2.699864	2
Knstrn	3.903701	6.630573	5.96618	6.298377	2.726872	2.062479	2
Cd48	9.4453	12.17239	11.92541	12.0489	2.727089	2.480111	2
Dab2	10.8332	13.56311	12.66946	13.11629	2.729914	1.836265	1
Kif20b	7.872377	10.6055	10.42648	10.51599	2.733125	2.5541	2
Lpxn	7.845462	10.57994	10.06511	10.32252	2.73448	2.219644	2
1700009N1	4.129441	6.866102	6.706653	6.786377	2.736661	2.577212	2
Il1rap	5.731411	8.468246	7.452664	7.960455	2.736836	1.721254	1
Trip13	6.010279	8.747186	8.444909	8.596048	2.736907	2.43463	2
S1pr2	5.12951	7.869707	7.293009	7.581358	2.740196	2.163499	2
Gpr101	5.813254	8.554433	8.821501	8.687967	2.741179	3.008247	2
4930486L2	3.932874	6.674959	6.012353	6.343656	2.742085	2.079479	2
Irak4	3.045775	5.789811	5.144589	5.4672	2.744036	2.098814	2
Fut4	2.321946	5.066134	4.797265	4.931699	2.744187	2.475319	2
Wdr86	5.703387	8.448644	7.159823	7.804234	2.745257	1.456436	1
Net1	2.993724	5.7396	4.468699	5.10415	2.745876	1.474975	1
Cd93	10.38294	13.13231	12.43342	12.78286	2.749372	2.050482	2
4933416I08	3.963908	6.714059	4.693824	5.703942	2.750151	0.729917	1
Dyrk4	2.321946	5.074632	5.264294	5.169463	2.752686	2.942348	2
Cfi	2.321946	5.076165	5.858493	5.467329	2.754219	3.536547	2
Tgm2	9.489853	12.24421	10.62158	11.43289	2.754355	1.131728	1
Stfa211	5.226452	7.983089	5.891249	6.937169	2.756637	0.664797	1
	6.211767	8.968781	8.467368	8.718074	2.757014	2.255601	2
1600022D1	2.321946	5.07899	5.311357	5.195174	2.757044	2.989411	2
4930556M	2.321946	5.079087	6.302571	5.690829	2.757141	3.980625	2
Zfp558	4.021147	6.779057	4.211523	5.49529	2.75791	0.190376	1
Ctse	5.362075	8.122411	9.382935	8.752673	2.760336	4.02086	2
Ccr5	7.81877	10.58127	9.4995	10.04039	2.762501	1.68073	1
	5.729583	8.492804	5.383909	6.938357	2.763221	-0.34567	1
Slc6a5	3.861407	6.625509	9.952284	8.288897	2.764102	6.090877	2
Tgif1	9.163666	11.93447	11.6051	11.76979	2.770806	2.441438	2
Tnfrsf1b	6.182025	8.955061	8.849848	8.902455	2.773037	2.667824	2

Ctsz	10.7179	13.49157	13.15129	13.32143	2.773672	2.433383	2
Mgst1	10.03502	12.81673	11.88771	12.35222	2.781708	1.852687	1
Parp14	9.806957	12.58884	12.19089	12.38986	2.781878	2.383929	2
	4.742189	7.533036	4.640977	6.087006	2.790847	-0.10121	1
Alox5ap	9.172742	11.96378	11.30903	11.63641	2.791039	2.136291	2
Sh3bgrl2	4.651225	7.442812	5.411164	6.426988	2.791587	0.759939	1
Myo7a	7.080898	9.873727	9.455365	9.664546	2.792829	2.374467	2
Itsn1	2.321946	5.115472	4.469188	4.79233	2.793526	2.147242	2
Cytip	5.653403	8.451443	7.886976	8.16921	2.79804	2.233573	2
Zfhx4	3.25925	6.06159	3.846202	4.953896	2.80234	0.586952	1
Steap1	6.147291	8.950002	8.491067	8.720535	2.802711	2.343776	2
	6.882345	9.693415	9.75216	9.722788	2.81107	2.869815	2
Defa-rs7	2.321946	5.134189	7.782419	6.458304	2.812243	5.460473	2
Cd48	7.646928	10.46127	9.955146	10.20821	2.814345	2.308218	2
Ankrd36	4.817615	7.632206	3.116573	5.374389	2.814591	-1.70104	1
Tnfrsf12a	7.095724	9.91409	8.429849	9.17197	2.818366	1.334125	1
Lmnbl1	5.513123	8.332178	7.484227	7.908203	2.819055	1.971104	1
	2.943094	5.762901	5.772517	5.767709	2.819807	2.829423	2
Gpr182	5.566916	8.388543	7.038763	7.713653	2.821627	1.471847	1
Tgm2	11.14137	13.96515	12.779	13.37208	2.823782	1.637627	1
	8.216266	11.04212	9.625147	10.33363	2.825853	1.408881	1
Tlr4	6.616632	9.442904	8.839339	9.141122	2.826273	2.222708	2
Clec4a3	7.123189	9.949692	9.515844	9.732768	2.826503	2.392655	2
Tagln2	12.0055	14.83315	14.47763	14.65539	2.827655	2.472137	2
	4.416843	7.247747	7.248626	7.248187	2.830905	2.831783	2
Ms4a14	4.454127	7.285169	7.640966	7.463067	2.831042	3.186838	2
Calca	2.546019	5.378652	4.785599	5.082125	2.832632	2.23958	2
Cp	9.137124	11.97097	10.05213	11.01155	2.833848	0.915005	1
Figl1	7.69767	10.53483	10.26513	10.39998	2.837156	2.567455	2
C3	7.216051	10.05526	9.249743	9.652501	2.839209	2.033692	2
Ncmap	6.046193	8.88787	5.662023	7.274947	2.841677	-0.38417	1
Cdk1	2.321946	5.166277	4.98146	5.073869	2.844331	2.659514	2
Aspg	10.02511	12.87017	12.623	12.74658	2.845065	2.597888	2
Spink2	2.321946	5.170019	5.925524	5.547772	2.848073	3.603578	2
Gm14461	2.321946	5.171264	6.138123	5.654694	2.849318	3.816177	2
1100001Gz	2.787756	5.637193	4.618994	5.128093	2.849437	1.831238	1
Figl1	7.664516	10.51406	10.44724	10.48065	2.84954	2.782725	2
Tap2	8.406134	11.25602	9.91542	10.58572	2.849887	1.509286	1
Usp49	2.321946	5.173273	4.923967	5.04862	2.851327	2.602021	2
LOC101056	5.76033	8.615665	7.614086	8.114875	2.855335	1.853756	1
Lhx1	3.505801	6.362848	6.347245	6.355046	2.857047	2.841444	2
Vwf	10.46786	13.33323	12.24631	12.78977	2.865369	1.778458	1
Ccna2	8.712215	11.57824	11.24321	11.41072	2.866022	2.530994	2
Ect2	6.966307	9.840227	10.2008	10.02051	2.87392	3.234495	2
Synpo	3.649674	6.523871	5.058438	5.791155	2.874198	1.408765	1
Pyhin1	7.220614	10.09487	8.652162	9.373517	2.874259	1.431549	1
Lyp1a1	2.959559	5.837471	4.627158	5.232314	2.877911	1.667599	1

Rufy4	3.702862	6.581989	6.39597	6.48898	2.879127	2.693108	2
Shisa3	4.995571	7.875767	4.856586	6.366176	2.880196	-0.13899	1
Serping1	6.699351	9.581718	9.060717	9.321218	2.882367	2.361366	2
Slc7a7	10.07131	12.95522	12.54279	12.749	2.883912	2.471475	2
Ptpn6	7.486398	10.37294	10.06437	10.21865	2.886538	2.577975	2
Plk1	7.445884	10.33404	9.785272	10.05966	2.888156	2.339388	2
Klk1b26	4.088598	6.984316	8.183973	7.584145	2.895718	4.095375	2
Pdcd1	4.534914	7.43386	7.284892	7.359376	2.898947	2.749978	2
	2.505062	5.405178	4.68017	5.042674	2.900116	2.175108	2
Rad54l	6.154154	9.055629	8.41621	8.73592	2.901475	2.262056	2
I830012O1	6.08588	8.987916	7.851051	8.419484	2.902036	1.765171	1
Cdca7l	2.321946	5.231172	4.338569	4.78487	2.909226	2.016623	2
Lhx9	5.17725	8.087119	9.479104	8.783112	2.909869	4.301854	2
AU022793	5.230288	8.140188	8.130693	8.135441	2.9099	2.900405	2
Klri1	2.321946	5.234595	4.247231	4.740913	2.912649	1.925284	1
Sdc1	3.174863	6.088463	6.107863	6.098163	2.9136	2.933001	2
Cd14	8.722906	11.63709	10.33397	10.98553	2.914187	1.61106	1
Aurka	7.526245	10.44288	10.13772	10.2903	2.916634	2.611477	2
Arhgap11a	3.179065	6.097931	5.7396	5.918766	2.918866	2.560535	2
Tgfbr2	2.321946	5.241811	4.654325	4.948068	2.919865	2.332378	2
	7.822046	10.74221	8.343967	9.543087	2.920161	0.521921	1
Slc9a4	6.38804	9.310372	9.61774	9.464056	2.922332	3.2297	2
Slc2a9	5.571268	8.497167	8.805074	8.651121	2.925899	3.233806	2
Socs3	10.55631	13.4829	12.36122	12.92206	2.926582	1.804909	1
9530020I1	2.321946	5.252234	3.760188	4.506211	2.930288	1.438242	1
Il1r2	4.837778	7.770181	6.877423	7.323802	2.932403	2.039645	2
Mgst1	8.961952	11.89508	10.9746	11.43484	2.933131	2.012646	2
Vps13c	2.866789	5.802172	4.627726	5.214949	2.935383	1.760937	1
Cyp2a4	2.606917	5.543874	7.334305	6.43909	2.936957	4.727388	2
	2.358202	5.300688	4.822275	5.061482	2.942487	2.464073	2
	2.325448	5.268809	4.489588	4.879199	2.943362	2.16414	2
Acp5	7.52087	10.46572	10.5897	10.52771	2.94485	3.068829	2
Ly86	12.65599	15.60158	15.60439	15.60298	2.945588	2.948397	2
Gm5127	4.772939	7.71973	7.120182	7.419956	2.946791	2.347243	2
Ly9	4.271308	7.220897	5.840158	6.530527	2.949589	1.56885	1
Hells	4.891388	7.843141	6.920445	7.381793	2.951753	2.029057	2
Clec4n	6.756911	9.708998	8.757812	9.233405	2.952087	2.000901	2
Casp4	7.813279	10.77184	10.52403	10.64794	2.958561	2.710752	2
	8.412012	11.37254	11.04298	11.20776	2.960525	2.630971	2
P2ry6	9.743145	12.70429	12.2727	12.4885	2.961144	2.529558	2
Klk1b5	4.999754	7.96347	7.64801	7.80574	2.963716	2.648256	2
Cdc20	9.682066	12.65069	12.56849	12.60959	2.968625	2.886419	2
S100a6	11.57782	14.54741	14.26435	14.40588	2.969586	2.686525	2
Pros1	8.400498	11.37027	11.08172	11.22599	2.969768	2.681224	2
Gins2	4.166168	7.136321	6.003864	6.570093	2.970153	1.837696	1
Hmgb2	10.4252	13.40178	12.99885	13.20032	2.976579	2.573653	2
Ndst4	3.095123	6.074969	6.774899	6.424934	2.979847	3.679776	2

	3.696886	6.677879	6.116613	6.397246	2.980994	2.419727	2
	2.517319	5.500823	4.918483	5.209653	2.983504	2.401165	2
1810019J1	3.754724	6.738617	6.764682	6.751649	2.983893	3.009959	2
Slc37a2	7.427994	10.41341	10.36614	10.38978	2.98542	2.938147	2
Dnm2	5.012667	7.998303	4.928787	6.463545	2.985637	-0.08388	1
Pabpc1l2b-	2.321946	5.308308	4.399972	4.85414	2.986362	2.078026	2
Arl14epl	2.321946	5.308532	6.708819	6.008676	2.986586	4.386873	2
Fcer1g	11.84656	14.83651	14.44425	14.64038	2.989946	2.597691	2
Vwf	2.598619	5.588663	5.020497	5.30458	2.990044	2.421879	2
Ddx60	3.578757	6.571245	6.02135	6.296298	2.992488	2.442593	2
Gpr114	6.164941	9.163844	9.76412	9.463982	2.998903	3.599179	2
Sirpb1a	5.555936	8.559503	7.60594	8.082722	3.003567	2.050004	2
Itga5	4.63809	7.642626	6.875596	7.259111	3.004536	2.237506	2
Psemb8	7.062614	10.07074	9.190617	9.630678	3.008124	2.128003	2
Plce1	4.183731	7.191879	6.739541	6.96571	3.008148	2.55581	2
Cyba	11.00273	14.01146	13.93355	13.97251	3.008736	2.930827	2
Slfm1	2.321946	5.331516	4.375899	4.853708	3.00957	2.053953	2
Ccr1	3.249916	6.262001	5.699586	5.980794	3.012085	2.449671	2
Gcnt1	5.427694	8.44066	8.08834	8.2645	3.012966	2.660646	2
Tlr7	7.691278	10.70464	10.5193	10.61197	3.01336	2.828022	2
Kl	5.115395	8.129675	7.777518	7.953597	3.01428	2.662124	2
Nlrp1b	2.904004	5.918734	5.123407	5.521071	3.01473	2.219404	2
	2.741761	5.758384	4.78221	5.270297	3.016623	2.04045	2
Tpx2	2.321946	5.33858	5.08387	5.211225	3.016634	2.761923	2
C3ar1	7.483077	10.50135	10.12252	10.31194	3.018275	2.639441	2
Zfx	2.321946	5.342619	4.918596	5.130608	3.020673	2.59665	2
Ifitm1	10.37148	13.39267	12.52585	12.95926	3.021186	2.154367	2
4930430D2	2.321946	5.343858	5.166844	5.255351	3.021912	2.844898	2
	2.321946	5.349095	5.151416	5.250256	3.027149	2.82947	2
Lrg1	8.793605	11.82183	9.978917	10.90037	3.028221	1.185312	1
	5.828014	8.860883	6.980245	7.920564	3.032869	1.15223	1
I830012O1	8.529009	11.56575	10.45092	11.00833	3.036738	1.921908	1
Knstrn	7.917358	10.96336	11.19607	11.07972	3.046002	3.278716	2
S100a4	9.520185	12.56702	12.78372	12.67537	3.046837	3.263539	2
Cdca8	8.092925	11.14217	10.91191	11.02704	3.04924	2.818982	2
Ccl5	6.467802	9.528563	10.25631	9.892436	3.060761	3.788506	2
Csprs	4.829036	7.890479	7.788476	7.839478	3.061443	2.95944	2
Fblim1	7.760047	10.82476	10.56436	10.69456	3.064715	2.804315	2
Irgm1	5.377851	8.442719	7.397476	7.920097	3.064868	2.019626	2
2210406H1	3.64293	6.709518	7.262078	6.985798	3.066588	3.619148	2
Acp5	7.674188	10.74184	10.98045	10.86114	3.067652	3.306259	2
Morf4l2	2.953229	6.021194	4.493083	5.257138	3.067966	1.539854	1
Ndc80	3.299782	6.369258	5.289308	5.829283	3.069475	1.989526	1
Klrb1	3.749237	6.820675	4.021147	5.420911	3.071438	0.271911	1
Pkd2l2	2.321946	5.393636	4.342273	4.867954	3.07169	2.020327	2
Igfbpl1	3.101239	6.175608	6.368316	6.271962	3.07437	3.267078	2
Casp4	7.408721	10.48531	10.20654	10.34593	3.076591	2.797822	2



Mcm3	9.332666	12.41487	11.80191	12.10839	3.082205	2.469243	2
Ifitm6	5.055149	8.137602	7.532177	7.83489	3.082453	2.477028	2
Tpte	2.321946	5.40445	7.344484	6.374467	3.082504	5.022538	2
Nin	4.415362	7.498131	3.918621	5.708376	3.082769	-0.49674	1
Serpinf2	5.499979	8.583446	9.979999	9.281723	3.083467	4.48002	2
Cd2	3.295087	6.381539	6.152197	6.266868	3.086452	2.857111	2
Ugt1a10	2.321946	5.409359	5.003902	5.20663	3.087413	2.681955	2
Gpr137b-p:	7.295147	10.38456	10.66055	10.52256	3.089415	3.365407	2
Mrgprb3	5.693022	8.782515	5.671224	7.226869	3.089493	-0.0218	1
Cd163l1	4.244596	7.334859	7.019381	7.17712	3.090263	2.774785	2
Dennd2d	4.297605	7.388721	7.046214	7.217468	3.091116	2.748609	2
BC055324	2.898338	5.990318	5.216245	5.603281	3.09198	2.317907	2
Olfr435	3.082475	6.176555	6.645113	6.410834	3.09408	3.562638	2
Gbp2b	4.37298	7.467937	7.977546	7.722741	3.094957	3.604566	2
Cybrd1	7.91091	11.00595	11.55177	11.27886	3.095044	3.64086	2
Htra4	2.321946	5.421029	5.984987	5.703008	3.099083	3.663041	2
Bbx	2.409415	5.508781	7.295147	6.401964	3.099366	4.885733	2
Ifitm1	10.47857	13.58463	12.67278	13.1287	3.106056	2.194208	2
Ptgr1	8.791864	11.89979	11.8739	11.88685	3.107927	3.082036	2
Nox4	5.128439	8.239284	7.722171	7.980728	3.110846	2.593733	2
Il21r	5.342397	8.454106	8.001391	8.227749	3.111709	2.658994	2
Ccdc109b	2.321946	5.43757	4.857794	5.147682	3.115624	2.535848	2
Srebf2	6.332536	9.448509	8.862838	9.155674	3.115973	2.530302	2
Pdpn	11.67404	14.7931	14.05954	14.42632	3.11906	2.385505	2
Foxr1	4.534584	7.65437	5.324652	6.489511	3.119786	0.790068	1
Col3a1	9.740288	12.86125	12.67929	12.77027	3.120957	2.939005	2
Fanci	6.596724	9.719708	9.66087	9.690289	3.122984	3.064146	2
	5.262799	8.386634	2.322894	5.354764	3.123835	-2.9399	1
Podxl	3.4537	6.577828	5.044042	5.810935	3.124127	1.590341	1
Mpeg1	12.2727	15.39794	15.78583	15.59189	3.125238	3.513129	2
	4.721934	7.848065	6.418017	7.133041	3.126131	1.696083	1
Phf11b	7.728103	10.85428	10.35817	10.60623	3.126179	2.630069	2
Gtse1	5.169694	8.296502	8.259638	8.27807	3.126808	3.089944	2
C1qa	6.068324	9.19602	8.544719	8.87037	3.127696	2.476395	2
Gsc2	2.684287	5.815333	4.0887	4.952017	3.131046	1.404413	1
Ccnb2	8.455268	11.58667	11.53285	11.55976	3.131404	3.077581	2
Cdca8	4.556666	7.695056	8.185311	7.940184	3.13839	3.628645	2
Gusb	9.142736	12.28318	11.96232	12.12275	3.140439	2.819587	2
Cdc6	3.244488	6.385851	5.548697	5.967274	3.141363	2.304209	2
Irx3	5.456046	8.599763	9.23132	8.915542	3.143717	3.775274	2
Igfbp3	6.167759	9.311795	7.60056	8.456177	3.144036	1.4328	1
Itln1	2.321946	5.47119	5.012807	5.241999	3.149244	2.690861	2
Mcm3	10.3235	13.47465	12.77614	13.12539	3.151147	2.45264	2
Fibcd1	2.673976	5.825663	4.626267	5.225965	3.151686	1.95229	1
Gpr84	9.378656	12.53411	12.96041	12.74726	3.155455	3.581757	2
Itgax	5.265178	8.421464	9.136261	8.778863	3.156286	3.871083	2
Efemp2	9.207022	12.36572	11.36179	11.86375	3.158694	2.154769	2

Msn	12.23284	15.39547	14.82514	15.11031	3.162629	2.592299	2
D13Ertd60i	2.697691	5.862544	4.715889	5.289216	3.164853	2.018198	2
E2f8	7.226732	10.39611	10.10483	10.25047	3.169382	2.878102	2
BC026585	2.321946	5.492926	5.219305	5.356115	3.17098	2.897359	2
	3.155894	6.331957	5.419248	5.875602	3.176063	2.263354	2
Erich2	2.321946	5.498898	5.208934	5.353916	3.176952	2.886988	2
Ifi30	7.595956	10.77507	10.4876	10.63133	3.179109	2.89164	2
Anxa1	7.401349	10.5818	10.07828	10.33004	3.180453	2.676931	2
Dnajc5b	2.321946	5.503364	4.257223	4.880293	3.181418	1.935277	1
Frrs1	4.914738	8.096851	7.744962	7.920907	3.182113	2.830224	2
Slc43a1	2.337215	5.526508	4.93989	5.233199	3.189294	2.602676	2
Gm14005	4.996701	8.193831	7.756537	7.975184	3.19713	2.759836	2
LOC101056	2.957729	6.160446	5.794636	5.977541	3.202717	2.836907	2
Tssk5	5.191509	8.397242	4.456891	6.427066	3.205733	-0.73462	1
Slfn8	5.565102	8.773084	7.885659	8.329372	3.207982	2.320557	2
Mrc1	8.989858	12.19958	11.25172	11.72565	3.209725	2.261858	2
Kras	4.992615	8.208997	5.506985	6.857991	3.216382	0.51437	1
Grn	9.499639	12.72233	12.33589	12.52911	3.222687	2.836253	2
Mpeg1	3.571528	6.794476	7.134329	6.964402	3.222947	3.562801	2
Slc14a1	8.452988	11.67652	11.67557	11.67604	3.223531	3.222583	2
Arhgef39	7.032575	10.25866	9.869105	10.06388	3.22608	2.83653	2
Cdhr1	5.521994	8.750097	8.091164	8.420631	3.228103	2.56917	2
Cenpi	4.80595	8.037271	8.176682	8.106977	3.231321	3.370732	2
	2.321946	5.555626	6.429124	5.992375	3.23368	4.107178	2
Gbp6	5.159382	8.395539	7.394454	7.894996	3.236157	2.235072	2
Gm3776	5.514117	8.751311	7.011992	7.881652	3.237194	1.497875	1
BC094916	2.321946	5.564619	4.848547	5.206583	3.242673	2.5266	2
	2.365593	5.608565	5.051904	5.330234	3.242972	2.686311	2
Vav1	10.00439	13.2479	12.79419	13.02104	3.243509	2.789802	2
Phf8	4.249795	7.495159	4.290892	5.893025	3.245364	0.041097	1
Aoc1	2.583546	5.830427	5.640747	5.735587	3.246881	3.057201	2
Cpa3	3.099992	6.348159	5.752384	6.050271	3.248167	2.652391	2
Cebpd	11.40631	14.65762	13.52738	14.0925	3.251312	2.121076	2
Tyms-ps	7.438386	10.69107	10.02817	10.35962	3.252686	2.589786	2
Asf1b	7.340609	10.59855	9.989936	10.29424	3.257936	2.649327	2
Nhlh2	2.321946	5.581562	8.826373	7.203968	3.259616	6.504427	2
Ifit1	8.108786	11.37081	10.7478	11.0593	3.262019	2.639011	2
Tbxas1	7.860695	11.13532	10.79921	10.96727	3.274627	2.938519	2
	4.211523	7.492584	5.492302	6.492443	3.281061	1.280779	1
Gm14548	5.12549	8.406854	7.572583	7.989719	3.281364	2.447093	2
Tfec	3.540649	6.830807	6.378501	6.604654	3.290158	2.837852	2
Ska3	3.122252	6.415905	5.903292	6.159598	3.293653	2.78104	2
Mrps6	11.24105	14.54068	13.52235	14.03152	3.299638	2.281307	2
Mmp8	2.321946	5.625452	4.93975	5.282601	3.303506	2.617804	2
Rac2	8.673631	11.9773	11.50403	11.74066	3.303673	2.830395	2
Csf2rb2	8.417354	11.728	11.50059	11.6143	3.310648	3.083238	2
Cxcr4	5.930741	9.242377	9.149147	9.195762	3.311636	3.218406	2

Olr1	2.321946	5.633665	5.489652	5.561659	3.311719	3.167706	2
	4.807635	8.121389	6.871612	7.496501	3.313754	2.063977	2
Btk	5.525544	8.840108	8.301535	8.570822	3.314564	2.775991	2
Tpx2	7.093352	10.40917	10.35726	10.38322	3.315822	3.263904	2
Mefv	5.276728	8.593209	7.527054	8.060132	3.316481	2.250326	2
Il31ra	2.321946	5.642633	4.663942	5.153288	3.320687	2.341996	2
Slc30a7	3.781933	7.103555	5.405746	6.25465	3.321622	1.623813	1
Cyp1b1	7.894808	11.21708	10.57932	10.8982	3.322273	2.684508	2
Drd5	3.62921	6.952254	7.376988	7.164621	3.323044	3.747778	2
Anxa2	12.03722	15.36204	14.81135	15.08669	3.324821	2.774128	2
Cdc6	4.284235	7.61128	6.740776	7.176028	3.327045	2.456541	2
Il18r1	2.330458	5.657925	5.393987	5.525956	3.327467	3.063529	2
Ifi35	4.007817	7.337668	5.970246	6.653957	3.329851	1.962429	1
Sostdc1	5.130609	8.461699	6.780854	7.621277	3.33109	1.650245	1
Slc15a3	6.074432	9.406772	8.610992	9.008882	3.33234	2.53656	2
	2.321946	5.658108	4.273703	4.965906	3.336162	1.951757	1
	4.991441	8.33056	5.301429	6.815995	3.339119	0.309988	1
Emilin2	9.09878	12.4391	11.4638	11.95145	3.340315	2.365017	2
Clec4a1	6.979409	10.32382	9.341896	9.832856	3.344407	2.362487	2
	3.480834	6.826603	4.388386	5.607495	3.34577	0.907552	1
Nlrc5	7.089986	10.43645	9.728804	10.08263	3.346467	2.638818	2
Npl	6.851212	10.20052	9.414489	9.807506	3.34931	2.563277	2
Lrtm1	2.414846	5.768651	4.565116	5.166883	3.353804	2.15027	2
Nox4	4.313024	7.66997	7.160434	7.415202	3.356946	2.84741	2
Slc1a5	4.498509	7.865109	5.351156	6.608133	3.3666	0.852647	1
BC100530	4.148372	7.516121	5.63138	6.573751	3.36775	1.483008	1
G3bp1	2.321946	5.698688	4.625771	5.16223	3.376742	2.303825	2
Orc1	2.510046	5.888154	5.585737	5.736946	3.378109	3.075692	2
Iqgap3	4.860908	8.244672	8.000334	8.122503	3.383764	3.139426	2
Fabp4	6.039343	9.424171	10.0012	9.712684	3.384828	3.961855	2
Krt18	4.58099	7.971079	6.716176	7.343628	3.390089	2.135186	2
Klk6	10.09993	13.49685	13.33511	13.41598	3.396917	3.235179	2
Saa2	3.554331	6.951817	6.133688	6.542753	3.397486	2.579357	2
2200002DC	4.88151	8.286984	6.768304	7.527644	3.405474	1.886794	1
Oas1f	7.393441	10.80476	10.2298	10.51728	3.411316	2.836357	2
Ckap2l	2.321946	5.735497	5.308532	5.522014	3.41355	2.986586	2
Sgol2	4.12026	7.535123	7.382104	7.458614	3.414863	3.261844	2
Fcrls	8.265595	11.68389	11.37451	11.5292	3.418293	3.10891	2
Csf2rb	8.424839	11.84362	11.77216	11.80789	3.418778	3.347318	2
Mfsd1	2.797661	6.221994	5.40368	5.812837	3.424333	2.606019	2
2010015L0	4.050494	7.48225	4.842548	6.162399	3.431756	0.792055	1
Kntc1	6.23554	9.673799	9.444979	9.559389	3.438259	3.209439	2
Ifitm3	11.23547	14.67406	13.67728	14.17567	3.438588	2.441808	2
Col6a5	2.321946	5.761632	5.029671	5.395652	3.439686	2.707725	2
Naip2	5.866427	9.312918	9.343237	9.328078	3.446491	3.47681	2
H2-Ab1	10.47106	13.92485	13.73119	13.82802	3.453786	3.260122	2
Acmsd	2.321946	5.777795	4.778735	5.278265	3.455849	2.456789	2

Mis18bp1	4.049686	7.509829	7.778891	7.64436	3.460143	3.729205	2
Napsa	3.045538	6.512492	4.94746	5.729976	3.466954	1.901922	1
Magt1	4.659591	8.127984	7.884536	8.00626	3.468393	3.224945	2
	2.540056	6.016891	6.521352	6.269121	3.476835	3.981296	2
Gm13088	2.329449	5.807078	7.945434	6.876256	3.47763	5.615985	2
Fcgr2b	9.060717	12.5391	12.09521	12.31716	3.478385	3.034493	2
H2-BI	3.37166	6.871121	5.581082	6.226101	3.499461	2.209423	2
Lat2	6.47508	9.978583	9.024772	9.501678	3.503503	2.549692	2
Tgfb1	10.21908	13.72289	12.53272	13.1278	3.50381	2.313641	2
Anp32e	2.321946	5.826811	4.522245	5.174528	3.504865	2.200299	2
Emilin1	3.281767	6.790494	5.743714	6.267104	3.508727	2.461947	2
Fermt3	3.92893	7.44122	5.795171	6.618196	3.51229	1.866241	1
Il19	3.204206	6.716835	5.009732	5.863283	3.512629	1.805526	1
Sdc4	8.094805	11.60989	10.73505	11.17247	3.515085	2.640244	2
Lbp	5.250346	8.769854	7.539432	8.154643	3.519508	2.289086	2
Tmem252	6.693488	10.21518	8.487177	9.351178	3.521691	1.793689	1
Fcgr3	7.180552	10.70328	9.986622	10.34495	3.522727	2.80607	2
Ecel1	9.594521	13.1193	13.32634	13.22282	3.524775	3.731816	2
Lgals1	12.50726	16.03276	15.89909	15.96593	3.525497	3.391828	2
Gm4610	2.599964	6.127656	6.488164	6.30791	3.527691	3.8882	2
Gm5068	8.480969	12.01172	11.01928	11.5155	3.53075	2.538315	2
Cybb	2.801646	6.34405	6.075443	6.209747	3.542404	3.273797	2
Dhrs1	6.922026	10.46458	10.19284	10.32871	3.542556	3.27081	2
Adam8	10.79483	14.34774	12.97095	13.65934	3.552916	2.176117	2
Myo1f	8.006792	11.55972	11.83587	11.69779	3.552928	3.829074	2
Cd72	6.944526	10.49952	9.682066	10.09079	3.554994	2.73754	2
S100a4	9.69438	13.25856	13.60248	13.43052	3.564181	3.908099	2
Dock8	4.21834	7.78779	7.09551	7.44165	3.56945	2.877169	2
	3.363749	6.936159	6.34405	6.640105	3.57241	2.980301	2
Fam101a	6.248532	9.822641	9.278243	9.550442	3.574109	3.029711	2
Gm9706	6.968657	10.54348	9.960603	10.25204	3.57482	2.991947	2
Myo1g	7.424291	10.99969	10.33709	10.66839	3.575403	2.9128	2
Kif2c	2.321946	5.897438	5.461241	5.679339	3.575492	3.139295	2
Qser1	2.642448	6.223946	7.839346	7.031646	3.581498	5.196898	2
Ncf4	8.766962	12.35176	11.98383	12.1678	3.584799	3.216868	2
	2.321946	5.909446	6.717909	6.313678	3.5875	4.395963	2
Gm4841	2.520084	6.110665	5.418469	5.764567	3.590581	2.898384	2
Sirpb1a	3.847278	7.438386	6.247551	6.842968	3.591108	2.400274	2
Sirpb1a	5.098988	8.699958	7.123189	7.911574	3.60097	2.024202	2
Chaf1b	6.465589	10.07828	9.657125	9.867702	3.612691	3.191536	2
Spc24	3.936947	7.549935	6.792738	7.171337	3.612988	2.855791	2
H2-Ab1	10.04302	13.65646	13.41926	13.53786	3.613439	3.376244	2
Fam159a	2.321946	5.939297	5.949422	5.94436	3.617351	3.627476	2
Lrrc25	5.415745	9.035618	8.360232	8.697925	3.619873	2.944487	2
Olfr982	2.321946	5.943352	5.377574	5.660463	3.621406	3.055628	2
Gdf15	3.735275	7.363439	7.191518	7.277479	3.628164	3.456244	2
Apobec1	9.886222	13.51556	12.78789	13.15172	3.629337	2.901663	2

Hp	5.435755	9.06672	7.330418	8.198569	3.630965	1.894662	1
Mdfic	6.077089	9.709213	9.390068	9.549641	3.632124	3.312979	2
Slamf6	3.631763	7.264806	7.740763	7.502785	3.633043	4.109	2
Hist1h2ae	2.321946	5.955907	5.767331	5.861619	3.633961	3.445385	2
Camk2d	3.129705	6.764204	6.007324	6.385764	3.634499	2.877619	2
Osmr	9.905126	13.54208	12.86125	13.20166	3.636949	2.956119	2
Cenph	3.111737	6.752191	6.176139	6.464165	3.640454	3.064402	2
Ckap2	4.075973	7.718607	7.972498	7.845553	3.642634	3.896526	2
Defa-rs7	4.635049	8.279408	10.64309	9.461248	3.644359	6.008039	2
Rgs1	6.451155	10.09793	9.348515	9.723223	3.646775	2.89736	2
	2.321946	5.975726	5.489089	5.732407	3.65378	3.167143	2
Aspm	6.517768	10.17713	10.48443	10.33078	3.65936	3.966658	2
Anxa3	6.612155	10.28574	9.064946	9.675343	3.673585	2.452791	2
Apob	2.321946	5.997082	6.245898	6.12149	3.675136	3.923952	2
Kif4	3.687816	7.365792	6.623889	6.99484	3.677976	2.936073	2
Kcne2	4.919797	8.600668	6.125923	7.363295	3.680871	1.206126	1
Ube2c	5.292947	8.975958	8.042814	8.509386	3.683011	2.749867	2
Irg1	3.265271	6.954339	5.964497	6.459418	3.689067	2.699226	2
Esco2	4.267998	7.957809	6.784015	7.370912	3.689811	2.516017	2
Cpsf4l	4.292265	7.982184	6.749516	7.36585	3.689919	2.457251	2
Vmn2r62	3.28331	6.978177	6.68661	6.832394	3.694867	3.4033	2
S100a11	9.934695	13.62983	12.59847	13.11415	3.695136	2.66378	2
Prss46	4.038182	7.737604	8.064374	7.900989	3.699421	4.026192	2
Cfb	4.336679	8.038406	7.416395	7.7274	3.701727	3.079716	2
Syce3	2.92133	6.625422	5.130684	5.878053	3.704092	2.209355	2
Gm10639	5.463032	9.17371	7.628385	8.401048	3.710678	2.165353	2
Bst2	7.243444	10.95478	9.491475	10.22313	3.711333	2.248031	2
Nuf2	3.515771	7.228958	6.851058	7.040008	3.713187	3.335287	2
Mcm6	9.806201	13.52627	13.20487	13.36557	3.720065	3.398667	2
Lrr1	4.684946	8.410601	7.731742	8.071172	3.725655	3.046796	2
	4.773157	8.50009	7.112151	7.806121	3.726933	2.338994	2
Kif15	2.321946	6.050355	4.97095	5.510652	3.728408	2.649004	2
Espl1	2.517889	6.249337	6.130902	6.190119	3.731447	3.613013	2
Avpr1b	2.486144	6.220684	7.135352	6.678018	3.73454	4.649208	2
Ctsc	9.811364	13.5467	12.85558	13.20114	3.735336	3.044212	2
Serpinb5	2.32312	6.061918	6.029904	6.045911	3.738798	3.706784	2
Kif20a	6.632224	10.38744	10.23959	10.31351	3.755214	3.607361	2
	4.216204	7.976558	4.512503	6.24453	3.760354	0.296299	1
Ermard	8.367313	12.13208	11.43376	11.78292	3.764768	3.066443	2
LOC101056	3.994441	7.765626	5.867003	6.816315	3.771185	1.872562	1
Ccdc40	2.408384	6.182025	4.111919	5.146972	3.77364	1.703535	1
Cd52	8.93973	12.7161	12.40022	12.55816	3.776372	3.460494	2
Lrrc8e	2.576156	6.364617	5.296657	5.830637	3.788461	2.720501	2
Emp3	6.506815	10.30013	9.405634	9.852884	3.793318	2.898819	2
Phf11d	4.831141	8.627046	7.632994	8.13002	3.795906	2.801853	2
Pole2	4.126478	7.926006	6.9691	7.447553	3.799528	2.842622	2
Cd300lb	2.68159	6.487355	5.897438	6.192396	3.805765	3.215848	2

	2.321946	6.128534	7.345069	6.736802	3.806588	5.023123	2
Kif11	2.904496	6.711464	5.939971	6.325717	3.806968	3.035475	2
Gsta2	4.04216	7.853633	6.147291	7.000462	3.811473	2.105131	2
Ifit3	9.63481	13.46055	12.41754	12.93904	3.825737	2.782733	2
B430306NC	5.457842	9.284272	8.795175	9.039724	3.82643	3.337333	2
	2.321946	6.14884	4.840584	5.494712	3.826894	2.518638	2
Traf3ip2	3.362499	7.19041	4.225315	5.707862	3.827912	0.862816	1
	2.331862	6.159999	4.734527	5.447263	3.828137	2.402664	2
F13a1	7.080475	10.91394	9.642916	10.27843	3.83346	2.562441	2
Stab1	9.539639	13.38218	12.54553	12.96385	3.842543	3.005888	2
Cd68	11.48451	15.33826	15.03902	15.18864	3.853752	3.554515	2
Lgr6	4.189323	8.046094	4.402774	6.224434	3.856771	0.213451	1
Il1b	6.601695	10.45935	9.716103	10.08773	3.857653	3.114408	2
Spn	3.100642	6.958526	7.152792	7.055659	3.857883	4.05215	2
Vim	12.98752	16.84669	16.93635	16.89152	3.85917	3.948831	2
A530064DC	4.561174	8.422435	7.780693	8.101564	3.861261	3.219519	2
2310001H1	2.321946	6.190218	4.960238	5.575228	3.868271	2.638291	2
Egfbp2	3.649993	7.518767	8.527091	8.022929	3.868774	4.877098	2
Gm10639	2.48493	6.377581	4.819971	5.598776	3.892651	2.335041	2
Top2a	4.469188	8.368163	7.378306	7.873235	3.898975	2.909118	2
Hoxb4	2.364146	6.264794	5.976301	6.120547	3.900648	3.612155	2
Cd68	3.773002	7.674763	6.911048	7.292906	3.901761	3.138046	2
Spdl1	2.355533	6.270333	5.257711	5.764022	3.914801	2.902178	2
Birc5	8.628631	12.54501	12.11479	12.3299	3.916379	3.48616	2
Tagln2	3.727262	7.646295	6.517207	7.081751	3.919033	2.789946	2
Apobec3	2.591584	6.510992	5.426337	5.968665	3.919408	2.834753	2
5430402E1	6.189259	10.12062	5.539563	7.830091	3.931359	-0.6497	1
	2.437775	6.373049	5.545512	5.959281	3.935274	3.107737	2
AA467197	6.306467	10.24358	10.13586	10.18972	3.937108	3.829396	2
Rrbp1	6.669122	10.60727	9.669633	10.13845	3.938143	3.000511	2
Ccl8	7.226888	11.16693	10.02865	10.59779	3.940045	2.80176	2
Pira11	4.167881	8.115021	7.187678	7.65135	3.94714	3.019797	2
C4b	11.23082	15.18213	15.00696	15.09454	3.951306	3.776134	2
Clic1	10.18891	14.14273	13.35785	13.75029	3.953827	3.168943	2
Pttg1	8.21968	12.17711	12.01641	12.09676	3.957433	3.796734	2
Rrm2	8.936535	12.89612	13.13275	13.01444	3.959586	4.196219	2
P2ry10	2.337373	6.303284	5.514442	5.908863	3.965911	3.177069	2
Gm5637	8.668887	12.63691	11.55671	12.09681	3.968022	2.887821	2
Krtap11-1	4.507318	8.478719	8.074434	8.276577	3.971401	3.567116	2
H19	8.158043	12.13895	12.43686	12.28791	3.980909	4.278817	2
Slfn10-ps	2.321946	6.305563	5.718235	6.011899	3.983617	3.396289	2
Ms4a7	8.507145	12.49364	13.01642	12.75503	3.986496	4.509274	2
Pira2	5.829818	9.820174	8.913713	9.366943	3.990356	3.083894	2
Lcp1	9.387635	13.38323	12.3726	12.87791	3.995591	2.984963	2
Ulbp1	2.709793	6.710206	5.766321	6.238263	4.000413	3.056527	2
Phf11a	7.166632	11.17239	10.49964	10.83601	4.005756	3.333003	2
Gm10754	2.867238	6.88295	7.058242	6.970596	4.015712	4.191005	2

Klra23	2.321946	6.338527	6.306467	6.322497	4.016581	3.984521	2
Ly6a	8.406854	12.42368	10.65963	11.54166	4.016828	2.252774	2
Oasl2	9.20155	13.22407	12.96466	13.09437	4.022522	3.763114	2
Ube2c	5.699586	9.726245	8.98349	9.354868	4.026659	3.283904	2
543042701	4.016737	8.044155	7.964809	8.004482	4.027419	3.948073	2
Rab32	7.617288	11.64549	11.5044	11.57494	4.028206	3.887108	2
	3.135464	7.165625	6.016818	6.591221	4.030161	2.881354	2
Ripk3	5.570165	9.608765	8.863254	9.23601	4.0386	3.293089	2
Bhmt	2.646495	6.693697	4.953254	5.823475	4.047202	2.306759	2
Plin2	9.411536	13.46287	12.93859	13.20073	4.051331	3.527051	2
Gm10872	3.111584	7.174477	4.819069	5.996773	4.062893	1.707485	1
Raet1e	5.655408	9.72206	9.104154	9.413107	4.066652	3.448746	2
Arl11	4.647755	8.717217	8.431245	8.574231	4.069462	3.78349	2
Plbd1	7.235102	11.30854	10.62391	10.96622	4.073433	3.388806	2
H2-Ea-ps	2.321946	6.396645	5.322367	5.859506	4.074699	3.000421	2
Folr2	4.849729	8.9279	9.048502	8.988201	4.078171	4.198773	2
Dlk1	6.184279	10.28408	9.543523	9.913802	4.099801	3.359244	2
Calml4	2.856133	6.959771	6.544341	6.752056	4.103638	3.688208	2
Acox2	2.625469	6.730751	6.627842	6.679297	4.105282	4.002373	2
Myo1f	6.084576	10.2008	9.365484	9.783143	4.116226	3.280908	2
Slc16a10	4.279945	8.398841	7.572394	7.985618	4.118896	3.292449	2
Nts	6.930906	11.05782	10.27219	10.665	4.126911	3.341286	2
Ankle1	2.934237	7.064787	6.535786	6.800287	4.13055	3.601549	2
Mx1	6.611237	10.74496	10.22113	10.48304	4.13372	3.609891	2
5830428M	2.321946	6.457978	4.742189	5.600083	4.136032	2.420242	2
H60a	5.329917	9.471724	9.334556	9.40314	4.141807	4.004639	2
Gdf3	2.395653	6.558903	8.096669	7.327786	4.16325	5.701016	2
Fyb	6.28358	10.46282	10.09612	10.27947	4.179237	3.812541	2
Oas2	6.287771	10.48225	9.696361	10.0893	4.194477	3.40859	2
Ccnb1	2.615006	6.812695	5.643567	6.228131	4.197689	3.02856	2
Prl	6.076541	10.27695	4.358704	7.317825	4.200405	-1.71784	1
Sbno2	5.540288	9.743476	9.074317	9.408897	4.203188	3.534029	2
Cdkn2a	4.510102	8.720634	8.722906	8.72177	4.210532	4.212804	2
Igsf6	5.610189	9.821174	9.936178	9.878676	4.210985	4.325989	2
Ticrr	3.438744	7.664337	7.445373	7.554855	4.225593	4.006629	2
Oas1a	8.137602	12.36462	11.75921	12.06192	4.227021	3.621605	2
Serpine1	7.94639	12.18035	11.70296	11.94165	4.233962	3.756567	2
H2-Eb1	8.143446	12.38251	11.81274	12.09763	4.239065	3.669293	2
Fam111a	5.615768	9.856428	8.801633	9.329031	4.240661	3.185866	2
Tnfaip2	3.721736	7.967687	7.501807	7.734747	4.245951	3.780071	2
	5.177471	9.426436	5.004877	7.215657	4.248965	-0.17259	1
Slc28a2	2.883745	7.133456	5.644267	6.388862	4.249711	2.760522	2
Itln1	2.321946	6.575535	6.26145	6.418493	4.253589	3.939504	2
Ercc6l	2.978599	7.261239	6.58751	6.924374	4.28264	3.608911	2
Ccnb1	7.029758	11.31634	11.63414	11.47524	4.286579	4.604379	2
Glipr1	5.482023	9.775534	9.071061	9.423298	4.293511	3.589038	2
Flncl	6.142378	10.45183	9.723146	10.08749	4.309456	3.580768	2

Isg15	8.122033	12.43192	11.39853	11.91523	4.309891	3.276494	2
Runx1	3.423645	7.735088	6.872861	7.303975	4.311443	3.449216	2
Ccl9	7.854286	12.16632	10.63804	11.40218	4.312034	2.783749	2
Depdc1a	2.321946	6.65196	6.497493	6.574727	4.330014	4.175547	2
Kif18b	2.690963	7.021441	6.904709	6.963075	4.330477	4.213746	2
Mvp	2.331395	6.671515	4.581398	5.626457	4.34012	2.250003	2
Ambp	2.895731	7.236942	5.25558	6.246261	4.341212	2.35985	2
Cdca3	6.955469	11.29831	11.10735	11.20283	4.342839	4.151881	2
Gm7897	2.321946	6.681821	5.83544	6.258631	4.359875	3.513494	2
	3.261003	7.627468	6.21617	6.921819	4.366466	2.955168	2
493041201	2.321946	6.707814	7.434107	7.07096	4.385868	5.112161	2
Dmbx1	3.638995	8.028762	8.011986	8.020374	4.389767	4.372991	2
Lmx1a	2.321946	6.714228	5.879129	6.296678	4.392282	3.557182	2
Clec7a	5.881224	10.28096	11.64449	10.96272	4.399736	5.763265	2
Atf3	5.538818	9.965982	9.06525	9.515616	4.427164	3.526432	2
Bcl2a1c	5.63138	10.06564	8.963172	9.514406	4.434259	3.331792	2
Pf4	9.215379	13.65326	11.77062	12.71194	4.437881	2.555243	2
Usp18	6.637613	11.07676	10.42821	10.75249	4.439151	3.790593	2
Runx1	2.321946	6.766371	5.885068	6.32572	4.444425	3.563122	2
Msr1	3.404036	7.860695	5.61276	6.736728	4.45666	2.208724	2
Thbs1	7.978103	12.44165	12.13027	12.28596	4.463545	4.152165	2
Hba-a1	8.884841	13.3609	12.25525	12.80807	4.476062	3.370404	2
Fam46c	5.078012	9.556915	9.303055	9.429985	4.478904	4.225044	2
Lilra6	3.617229	8.097673	7.118805	7.608239	4.480444	3.501576	2
Oasl1	6.219246	10.7031	9.777718	10.24041	4.483854	3.558472	2
Ifi204	7.916805	12.4007	11.41311	11.90691	4.483896	3.496306	2
Lyz1	10.61125	15.09575	15.29775	15.19675	4.484492	4.686491	2
Emp1	8.62457	13.10965	12.45567	12.78266	4.485083	3.831098	2
1190002F1	3.711034	8.200025	8.486302	8.343164	4.488991	4.775268	2
Sirpb1b	2.426159	6.915706	5.124626	6.020166	4.489547	2.698467	2
Sell	3.971081	8.480701	6.957253	7.718977	4.50962	2.986172	2
Hpgds	2.836513	7.346236	6.341929	6.844083	4.509723	3.505417	2
Phc3	3.556323	8.069338	4.453341	6.261339	4.513015	0.897018	1
Hba-a2	12.29083	16.8059	16.40463	16.60527	4.515079	4.113802	2
4831440D2	2.412836	6.939133	7.400034	7.169583	4.526297	4.987198	2
Ermard	3.217188	7.745626	7.245854	7.49574	4.528438	4.028666	2
Cd72	5.212654	9.752955	8.921711	9.337333	4.540301	3.709057	2
Ear12	3.527761	8.097189	5.233796	6.665492	4.569428	1.706035	1
Clspn	2.321946	6.906506	6.504234	6.70537	4.58456	4.182288	2
Hspb8	2.321946	6.907215	5.954687	6.430951	4.585269	3.632741	2
Lhx5	2.612121	7.207008	7.040993	7.124001	4.594887	4.428872	2
Bst1	5.786123	10.38514	10.19059	10.28786	4.599012	4.404464	2
Gfap	10.2009	14.802	15.15693	14.97947	4.601105	4.956039	2
Sgol1	4.460118	9.068333	9.321898	9.195116	4.608215	4.86178	2
Krt85	4.484685	9.093214	8.679662	8.886438	4.60853	4.194978	2
Runx3	2.321946	6.939363	7.542188	7.240775	4.617417	5.220242	2
Phf11d	7.636307	12.25854	11.567	11.91277	4.622229	3.930689	2



Vav1	3.420227	8.0562	6.942785	7.499493	4.635973	3.522558	2
Gm16340	4.353053	8.994915	7.957366	8.47614	4.641862	3.604313	2
Cdca5	5.459639	10.10197	10.12721	10.11459	4.642328	4.667574	2
Bcl3	7.389777	12.03525	11.22945	11.63235	4.645468	3.839675	2
Slco1a5	2.792795	7.439921	6.47493	6.957426	4.647127	3.682136	2
Ifi44	6.098218	10.76067	10.71333	10.737	4.662452	4.61511	2
Zbp1	2.321946	6.995926	5.543238	6.269582	4.67398	3.221292	2
Clec4e	3.257571	7.945657	6.21578	7.080719	4.688086	2.958209	2
Foxb1	2.496845	7.199447	8.295418	7.747432	4.702602	5.798573	2
Prc1	7.741385	12.44776	12.67407	12.56092	4.706376	4.932684	2
Ms4a6c	4.125388	8.834935	7.780922	8.307929	4.709547	3.655535	2
Cd180	3.470227	8.195115	7.608314	7.901715	4.724888	4.138087	2
Nusap1	4.980882	9.720663	9.642123	9.681393	4.739781	4.661241	2
C5ar1	2.321946	7.063	5.520388	6.291694	4.741054	3.198442	2
Otx2	6.363803	11.1091	11.08804	11.09857	4.745292	4.724237	2
Mnda	3.545402	8.294918	7.999777	8.147348	4.749516	4.454375	2
S100a9	8.968813	13.7186	11.41377	12.56619	4.749791	2.444953	2
Clhc1	2.327824	7.093504	5.942686	6.518095	4.76568	3.614862	2
Gm9564	2.447361	7.21588	4.437554	5.826717	4.768519	1.990193	1
Hbb-b1	2.321946	7.096067	7.505262	7.300665	4.774121	5.183316	2
Sucnr1	2.321946	7.097952	6.570952	6.834452	4.776006	4.249006	2
Ccl6	7.540682	12.34065	10.56096	11.4508	4.799966	3.020279	2
	2.321946	7.130345	6.104575	6.61746	4.808399	3.782629	2
Hbb-bt	8.881736	13.71074	13.21171	13.46123	4.829006	4.329975	2
Kif2c	2.469024	7.304216	7.063572	7.183894	4.835192	4.594548	2
1700057Hz	2.454111	7.293009	4.158355	5.725682	4.838898	1.704244	1
Bcl2a1d	8.478631	13.32652	12.66355	12.99503	4.847887	4.18492	2
Tlr2	7.122967	11.98053	12.04417	12.01235	4.857564	4.921199	2
Fcgr4	6.009414	10.88356	10.93902	10.91129	4.874142	4.929607	2
Birc5	2.321946	7.202194	6.271524	6.736859	4.880248	3.949577	2
Hmox1	8.402444	13.29632	10.69932	11.99782	4.893877	2.296876	2
S100a8	5.922737	10.84648	8.97815	9.912317	4.923747	3.055413	2
Capg	8.877847	13.87461	13.06997	13.47229	4.996765	4.192125	2
Niacr1	3.21255	8.235978	7.885221	8.0606	5.023428	4.672671	2
Six3os1	2.321946	7.353238	5.239833	6.296536	5.031292	2.917887	2
Epyc	2.321946	7.366474	7.699582	7.533028	5.044528	5.377636	2
Cd109	4.391962	9.468288	9.443654	9.455971	5.076326	5.051692	2
Fyb	2.321946	7.399306	6.530154	6.96473	5.07736	4.208208	2
Gm5150	2.321946	7.405962	5.598346	6.502154	5.084016	3.2764	2
C3	6.485878	11.57041	10.92755	11.24898	5.084534	4.441675	2
Exoc4	2.321946	7.416395	4.605964	6.011179	5.094449	2.284018	2
Tk1	7.291297	12.39561	11.90628	12.15095	5.104315	4.614987	2
Mcam	2.444655	7.582358	4.68404	6.133199	5.137703	2.239384	2
Gp49a	4.776754	9.916487	8.610421	9.263454	5.139733	3.833667	2
Serpina3f	7.571765	12.73935	11.71083	12.22509	5.167589	4.139061	2
Tubb6	9.524169	14.70168	13.73936	14.22052	5.177515	4.215187	2
Serpina3i	2.321946	7.503058	6.809274	7.156166	5.181111	4.487328	2

Ifi27l2a	9.129286	14.31062	14.04306	14.17684	5.181334	4.913777	2
Serpina3n	6.350777	11.53556	10.87842	11.20699	5.184778	4.527641	2
Gfap	9.368104	14.55593	14.06189	14.30891	5.187826	4.693781	2
Gm5483	2.321946	7.529084	4.657156	6.09312	5.207138	2.335209	2
Mki67	7.734114	12.94672	12.53382	12.74027	5.212606	4.799709	2
Ms4a6d	8.03907	13.30204	12.05214	12.67709	5.262972	4.013073	2
Pirb	6.113555	11.40323	10.47195	10.93759	5.289673	4.358392	2
Spink8	6.411673	11.75679	11.91833	11.83756	5.345113	5.506653	2
Hbb-b2	7.178608	12.52585	11.58245	12.05415	5.347238	4.403837	2
Ms4a4c	5.414117	10.76595	9.571191	10.16857	5.351836	4.157074	2
Scgb3a1	6.305908	11.66899	10.4487	11.05884	5.363083	4.142789	2
Zfp870	2.405993	7.777804	5.428305	6.603054	5.371811	3.022312	2
Uhrf1	6.2635	11.64174	10.66653	11.15413	5.378236	4.403033	2
Neil3	3.859923	9.260019	9.410253	9.335136	5.400096	5.55033	2
Tuba1c	9.653374	15.10358	14.20001	14.65179	5.450201	4.546638	2
Speer4f	2.325415	7.789637	4.13974	5.964688	5.464222	1.814325	1
Sprr1a	5.743171	11.20957	11.1181	11.16384	5.466403	5.374931	2
Saa3	3.130089	8.639325	7.371207	8.005266	5.509236	4.241118	2
Gpr65	5.146321	10.65826	10.2254	10.44183	5.511937	5.079075	2
Oas1a	2.321946	7.857028	6.561229	7.209128	5.535081	4.239283	2
Birc5	2.321946	7.859712	6.61928	7.239496	5.537766	4.297334	2
Bub1	4.742132	10.36097	10.20818	10.28458	5.61884	5.466047	2
Ccl11	2.321946	7.942876	6.205253	7.074065	5.62093	3.883307	2
Tuba1c	9.486183	15.10816	14.14957	14.62887	5.621978	4.663387	2
Defa-rs4	2.321946	7.969515	10.12291	9.04621	5.647569	7.800959	2
Wfdc17	6.937782	12.59018	12.32028	12.45523	5.652397	5.382498	2
Pbk	4.730664	10.39207	10.50772	10.44989	5.661408	5.777051	2
Htr2b	5.333921	11.00421	11.00665	11.00543	5.67029	5.67273	2
F10	2.321946	8.000334	6.511964	7.256149	5.678388	4.190018	2
Barhl1	2.321946	8.020822	8.056112	8.038467	5.698876	5.734166	2
Ttr	8.705602	14.40537	10.44094	12.42315	5.699767	1.735338	1
	5.740782	11.4544	11.09496	11.27468	5.713615	5.354179	2
Ccr2	3.207757	8.93973	7.715959	8.327844	5.731973	4.508202	2
Lgals3	9.534405	15.28871	14.99164	15.14018	5.754308	5.457233	2
Lyz2	3.924382	9.687294	9.202723	9.445009	5.762913	5.278342	2
4921501E0	2.321946	8.116536	4.022857	6.069697	5.79459	1.700911	1
Pira7	2.89391	8.771615	7.889115	8.330365	5.877705	4.995205	2
Il6	3.662108	9.616342	6.619667	8.118005	5.954234	2.957559	2
Bpifb9b	6.1241	12.09546	5.830256	8.962856	5.971355	-0.29384	1
Xdh	2.686639	8.683444	7.178089	7.930766	5.996805	4.49145	2
Ska1	2.321946	8.430203	7.943782	8.186992	6.108256	5.621836	2
Ccl4	4.520998	10.65081	9.152034	9.901423	6.129815	4.631037	2
Bub1b	2.321946	8.454771	7.659288	8.05703	6.132825	5.337342	2
Irx2	2.321946	8.506549	10.0776	9.292072	6.184603	7.755649	2
Plac8	4.471699	10.69482	9.198543	9.946682	6.223122	4.726844	2
Cd300lf	4.828348	11.05243	10.55689	10.80466	6.224086	5.728543	2
Ccl3	5.620061	11.84656	11.13785	11.49221	6.226502	5.517788	2

Mki67	6.308561	12.55845	12.09831	12.32838	6.249889	5.789744	2
Hal	5.807334	12.06757	11.34215	11.70486	6.260241	5.53482	2
Mmp3	2.508593	8.772577	7.074064	7.923321	6.263984	4.565472	2
Gm10693	2.626297	8.907706	7.957809	8.432758	6.281409	5.331512	2
Ifi204	5.205355	11.49373	10.2357	10.86472	6.288373	5.030349	2
Al607873	5.538768	11.84204	10.84488	11.34346	6.303269	5.306108	2
Fam64a	2.337292	8.668513	8.252243	8.460378	6.331221	5.914951	2
Gata3	2.321946	8.750637	8.540651	8.645644	6.428691	6.218705	2
Cd84	2.446463	8.934232	8.755957	8.845095	6.487769	6.309494	2
Cdk1	3.920186	10.413	10.13697	10.27499	6.492818	6.216783	2
Chi3l3	4.589004	11.10105	8.868469	9.984758	6.512044	4.279465	2
Apoc2	4.343053	10.91604	11.34679	11.13141	6.572982	7.003739	2
Isg15	2.321946	8.932481	7.775846	8.354164	6.610535	5.4539	2
	2.321946	9.014681	7.268009	8.141345	6.692735	4.946063	2
Timp1	7.895268	14.63889	14.03737	14.33813	6.743622	6.142105	2
Cst7	2.321946	9.090309	11.00029	10.0453	6.768363	8.67834	2
Cd300lf	4.109138	10.88603	10.41485	10.65044	6.776894	6.30571	2
	2.35657	9.190331	9.489768	9.34005	6.833762	7.133199	2
Gpnmb	2.321946	9.195655	9.7163	9.455978	6.873709	7.394354	2
Glycam1	2.321946	9.219595	9.310372	9.264984	6.897649	6.988426	2
Lilrb4	3.067175	10.00439	8.692109	9.348249	6.937214	5.624934	2
Clec4d	3.415324	10.40875	9.047876	9.728314	6.993427	5.632552	2
Ptx3	2.348821	9.348515	7.6367	8.492608	6.999694	5.287879	2
Ifi202b	6.727336	13.84949	13.20183	13.52566	7.122155	6.474495	2
Cd5l	2.321946	9.525196	10.59271	10.05895	7.20325	8.270766	2
Ch25h	5.240527	12.5545	10.67748	11.61599	7.313975	5.436955	2
Ccl12	7.700351	15.03989	12.91615	13.97802	7.339535	5.2158	2
Nxpe5	2.400713	9.887712	8.306361	9.097037	7.487	5.905649	2
Cxcl10	5.290907	12.92086	12.63549	12.77818	7.629951	7.344586	2
Ifi202b	5.35554	13.00944	12.31871	12.66408	7.653902	6.963173	2
Cd44	2.333626	9.994813	9.397787	9.6963	7.661187	7.064161	2
Lilrb4	7.316217	15.14401	14.23583	14.68992	7.827795	6.919617	2
Sirpb1b	2.479654	10.3874	8.836938	9.612169	7.907746	6.357284	2
Ccl7	2.519969	10.71386	8.474164	9.594013	8.193894	5.954196	2
Ccl2	5.458406	13.69781	11.25149	12.47465	8.239402	5.793087	2
Tgm1	4.223104	12.60925	10.41142	11.51033	8.386145	6.188316	2
Lcn2	7.088558	15.70827	13.42909	14.56868	8.619713	6.340527	2
Spp1	5.593692	14.31847	13.3871	13.85278	8.724775	7.793404	2
Msr1	2.502357	13.30658	11.65079	12.47869	10.80422	9.148437	2