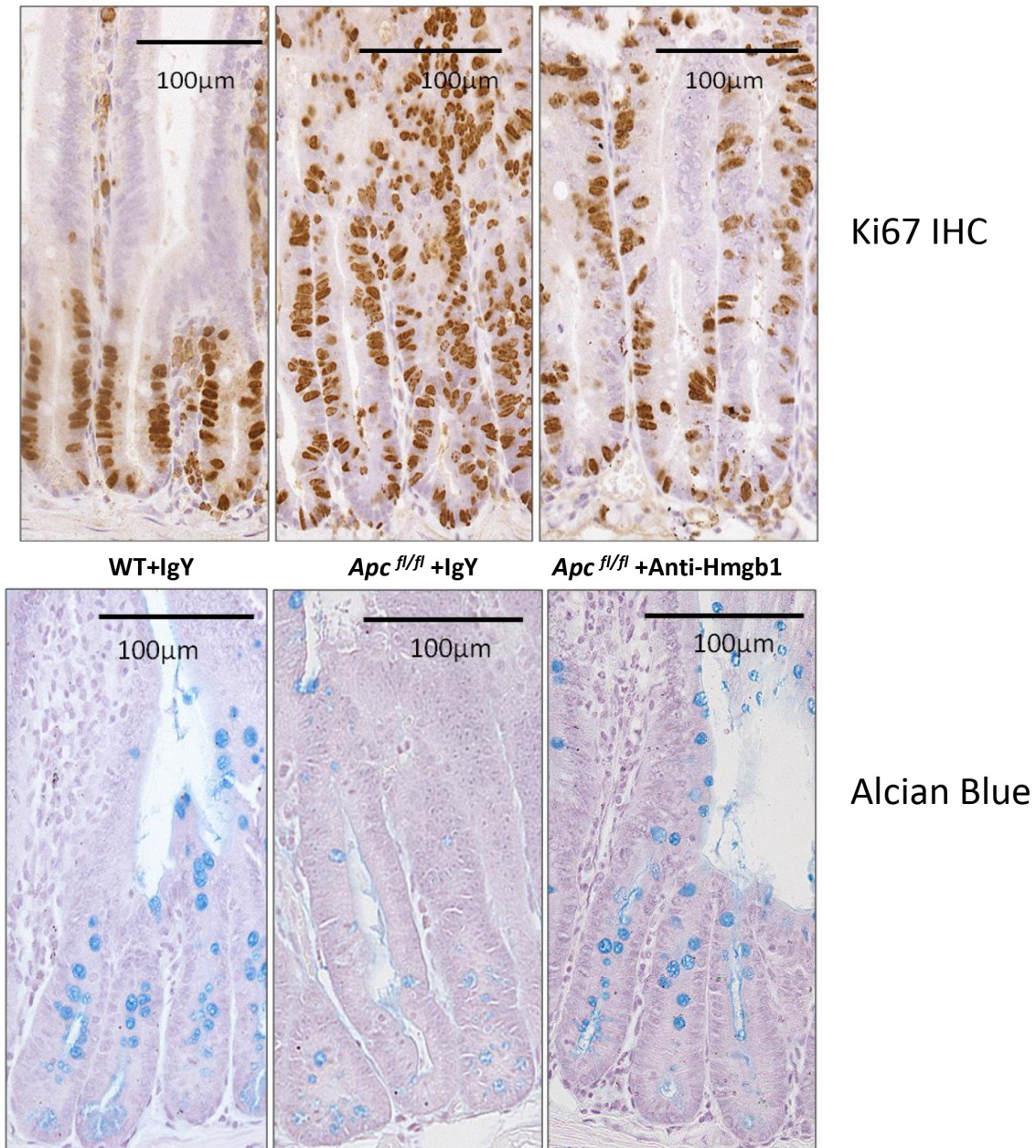


Secreted HMGB1 from Wnt activated intestinal cells is required to maintain a crypt progenitor phenotype

SUPPLEMENTARY FIGURE



Supplementary Figure 1: Cell proliferation and differentiation following neutralising HMGB1-antibody treatment. IHC analysis for Ki67 and Alcian blue staining for Goblet cell differentiation on intestinal sections of control (WT) and induced *ApcFlox* day 4 post induction treated with IgY or anti-HMGB1 antibodies. Note the comparative reduction in levels of Ki67 and increased numbers of goblet cells in the anti-HMGB1 treated *ApcFlox* sections.