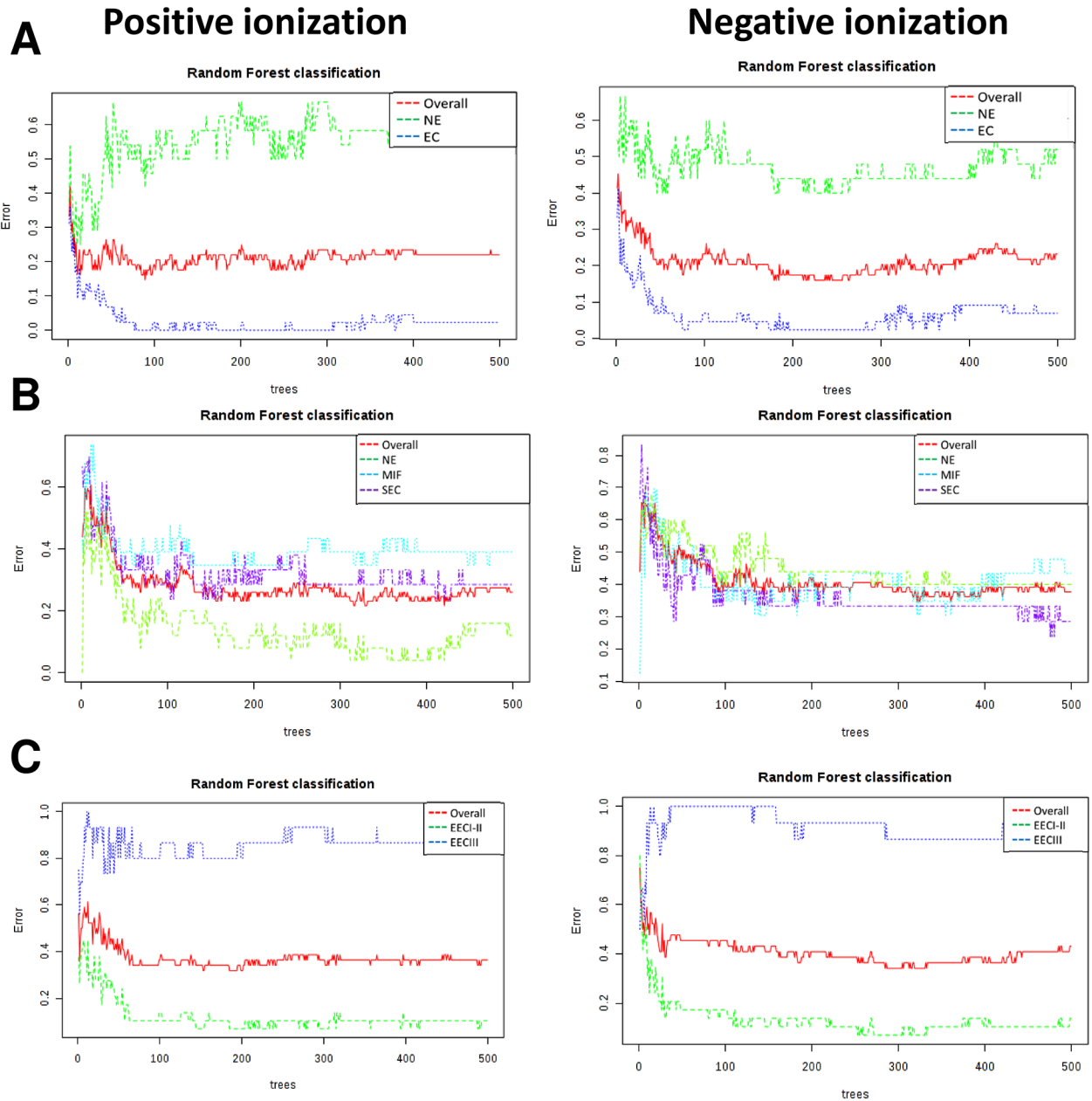
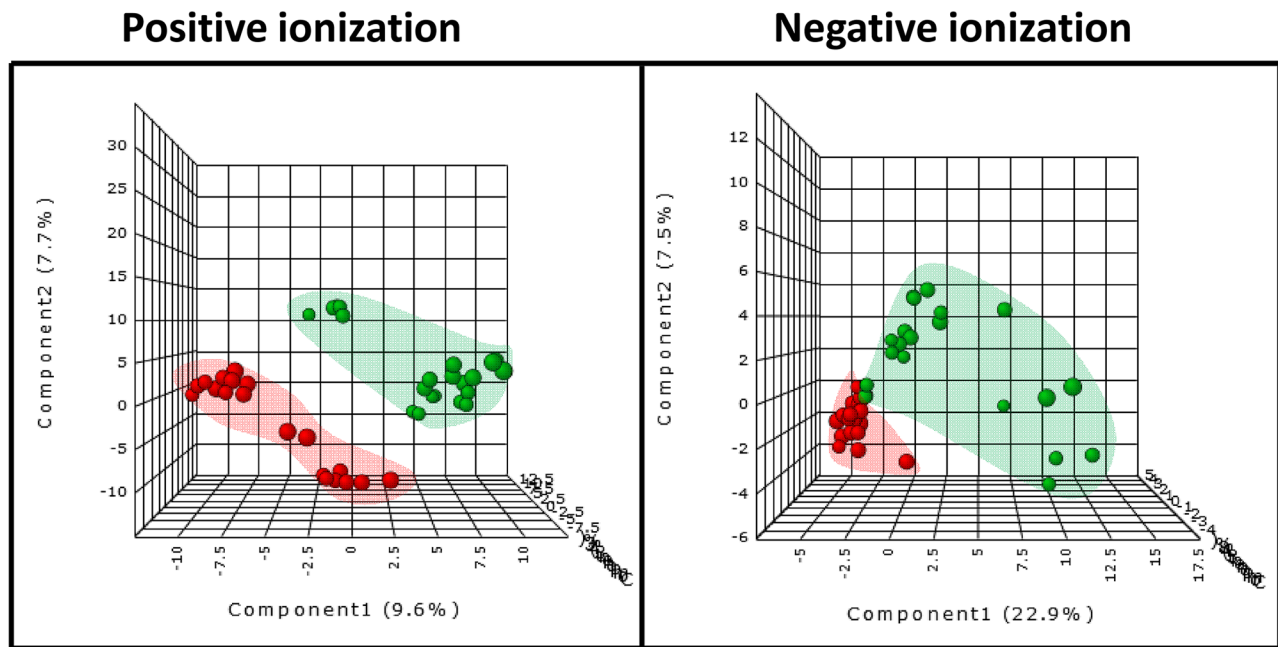


# Metabotyping human endometrioid endometrial adenocarcinoma reveals an implication of endocannabinoid metabolism

## SUPPLEMENTARY FIGURES



Supplementary Figure 1: Random forest classification for different studies included in the study.



**Supplementary Figure 2: PLS-DA graphs demonstrating the differentiation effect of location in metabolomic profiles.** Red spots represent samples from myometrial invasive front and green spots surface endometrial carcinoma. PLS-DA model out of bag error is 0.195 for positive and 0.214 for negative ionization.

**Supplementary Dataset 1: Statistically different molecules (Student T Test,  $p < 0.05$ ) between endometrioid endometrial carcinomas (EEC) and normal endometrium (CTL).**

See Supplementary Dataset File 1